

60x30:
Educated
Population Goal
and Interactive
Map



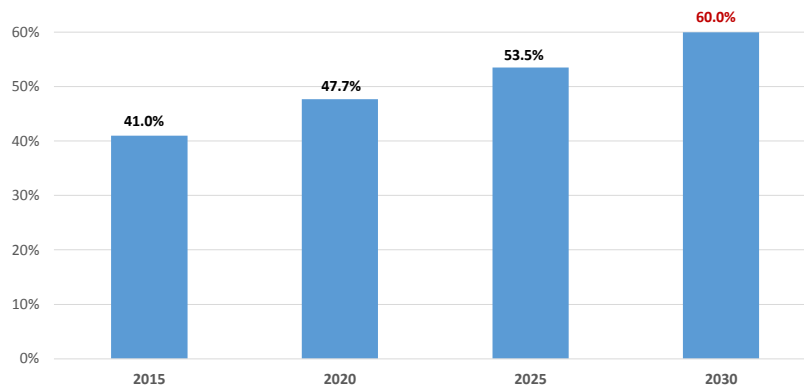
Texas Higher Education
Coordinating Board

Julie Eklund
Committee on Affordability, Accountability
and Planning
September 27, 2017



The state needs to increase postsecondary attainment by approximately 1.3% each year to reach 60x30.

Percent of Population Ages 25-34 with a Certificate or Degree

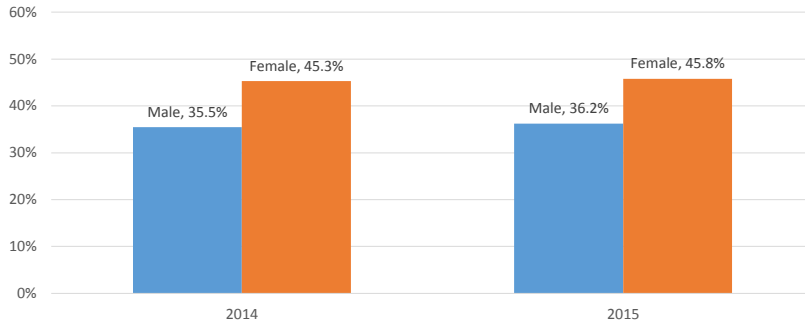


Note: 2020, 2025 & 2030 are targets



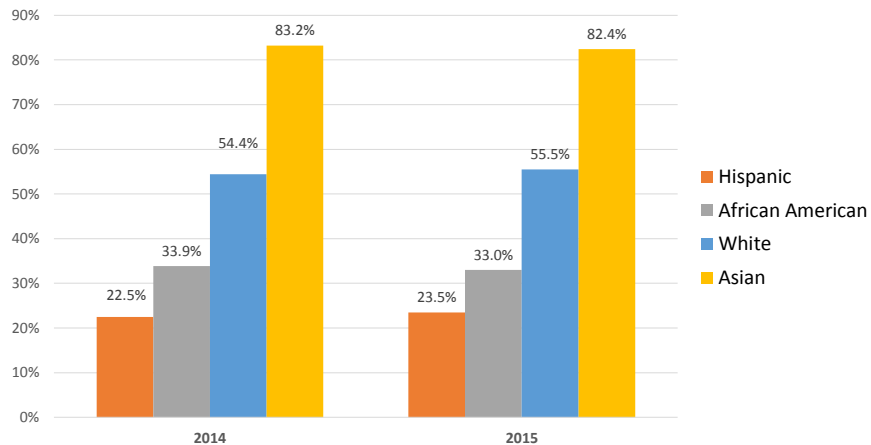
Females are more likely to have a postsecondary credential than males, but the gap closed slightly in 2015

Percent of Population Ages 25-34 with a Certificate or Degree

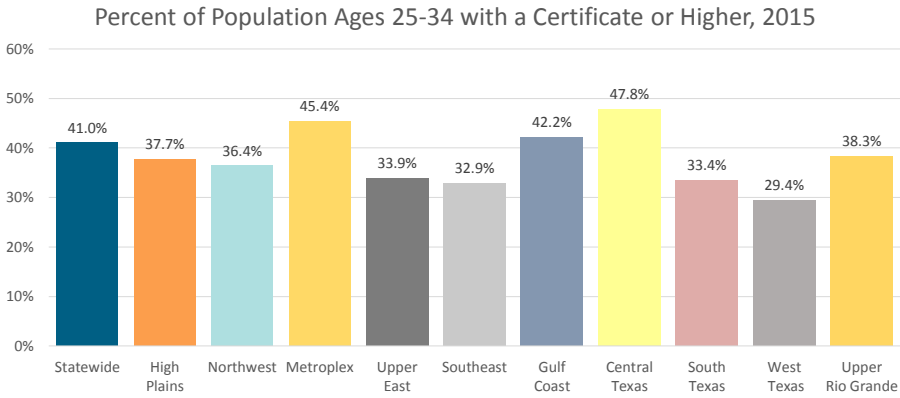


There are substantial gaps across major demographic groups

Percent of Population Ages 25-34 with a Certificate or Degree



Regional levels vary as well



New interactive map provides insight on education levels for residents, ages 25-34,
<http://www.thecb.state.tx.us/apps/map/attainment>

Each dot represents about 150 people.

Higher Education Degree

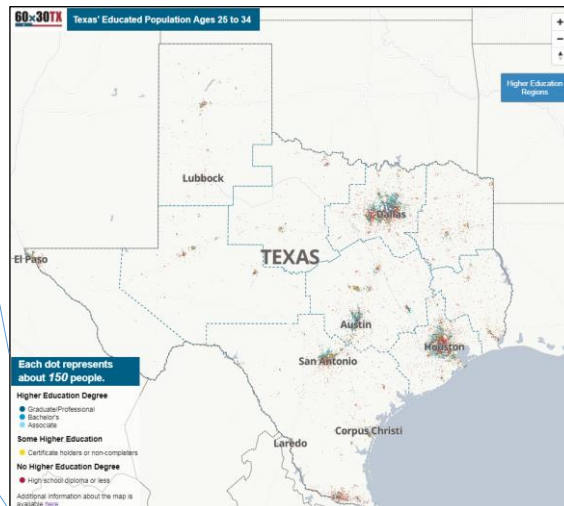
- Graduate/Professional
- Bachelor's
- Associate

Some Higher Education

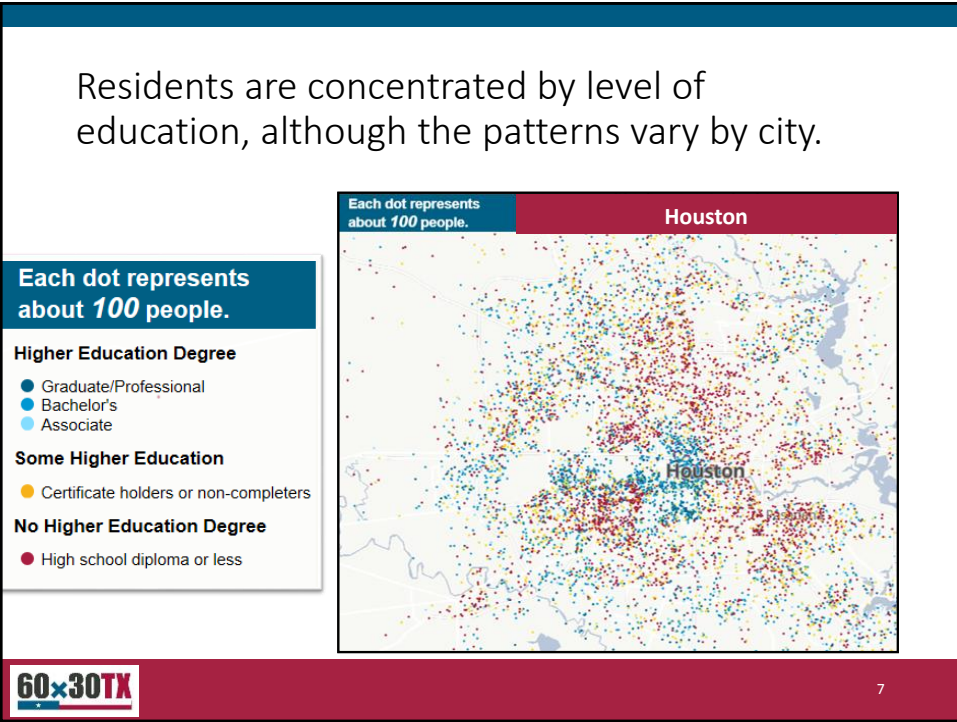
- Certificate holders or non-completers

No Higher Education Degree

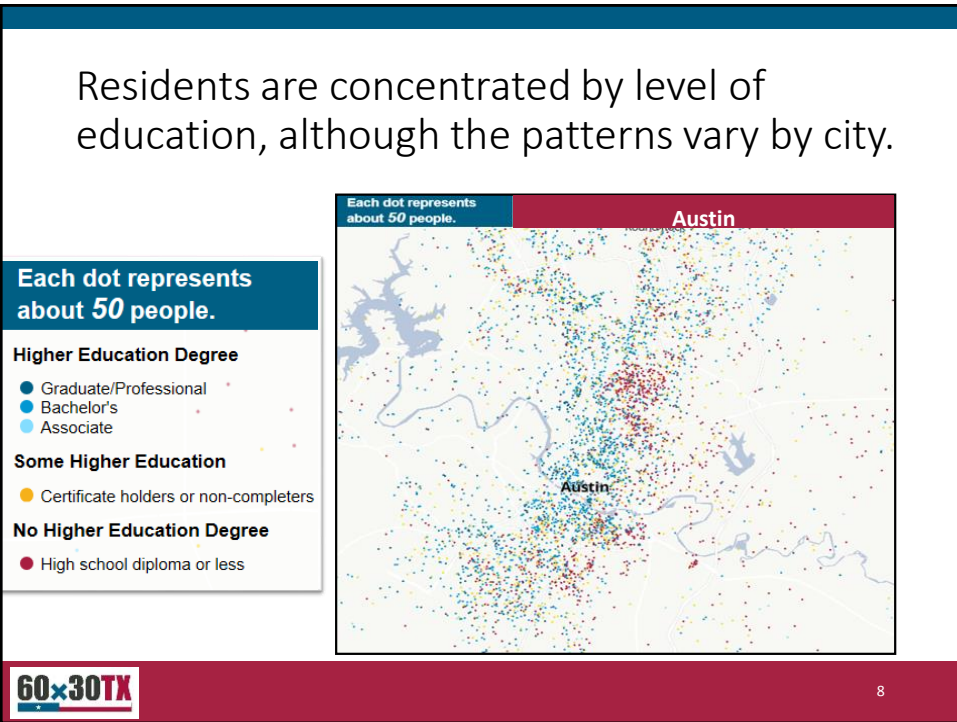
- High school diploma or less



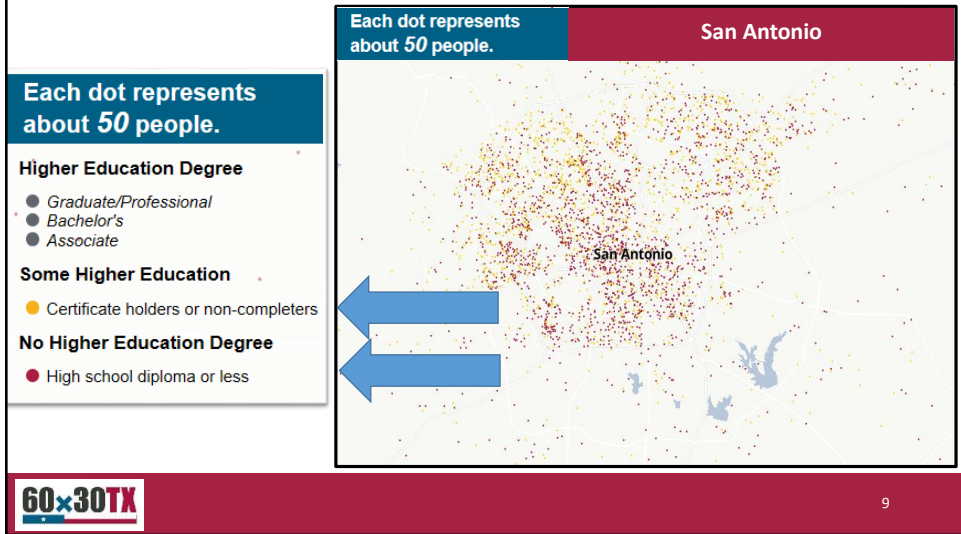
Residents are concentrated by level of education, although the patterns vary by city.



Residents are concentrated by level of education, although the patterns vary by city.



By selecting categories on the map, the patterns of some and no college residents are apparent



Questions or comments?

