

# ***60x30TX*** Progress

April 25, 2018



Texas Higher Education  
Coordinating Board

**Raymund A. Paredes, Ph.D.**  
Commissioner of Higher Education

# The Four 60x30TX Goals

By 2030:



## THE OVERARCHING GOAL: 60x30 EDUCATED POPULATION

At least 60 percent of Texans ages 25-34 will have a certificate or degree.

■ *Supports the economic future of the state*



## THE SECOND GOAL: COMPLETION

At least 550,000 students in 2030 will complete a certificate, associate, bachelor's, or master's from an institution of higher education in Texas.

■ *Requires large increases among targeted groups*



## THE THIRD GOAL: MARKETABLE SKILLS

All graduates from Texas public institutions of higher education will have completed programs with identified marketable skills.

■ *Emphasizes the value of higher education in the workforce*



## THE FOURTH GOAL: STUDENT DEBT

Undergraduate student loan debt will not exceed 60 percent of first-year wages for graduates of Texas public institutions.

■ *Helps students graduate with manageable debt*



Texas young adults ages 25-34 are **27<sup>th</sup>** in the world



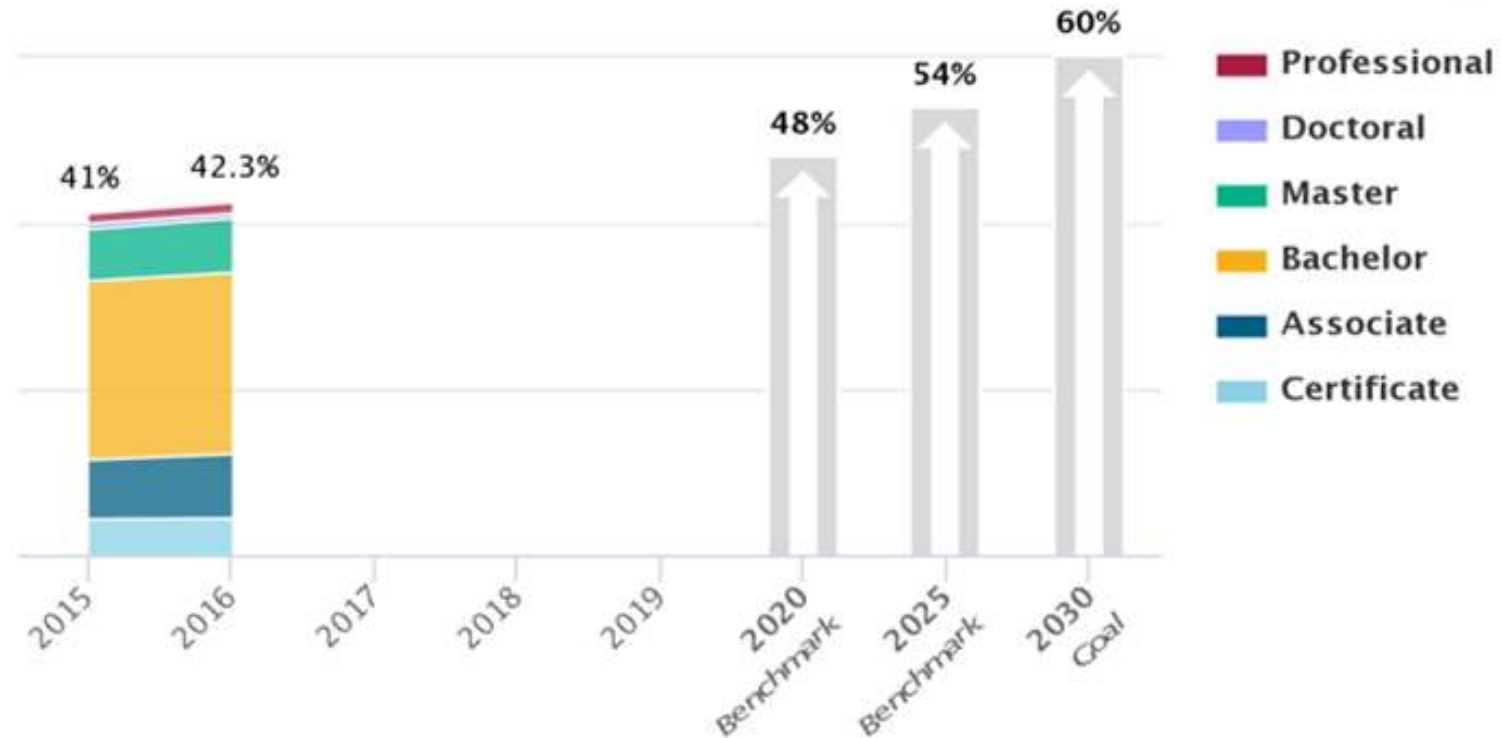
**Texas attainment levels** have stayed relatively steady,  
but in a global economy, **staying steady = falling behind**



# EDUCATED POPULATION

Goal: By 2030, at least 60% of Texans ages 25-34 will have a certificate or degree

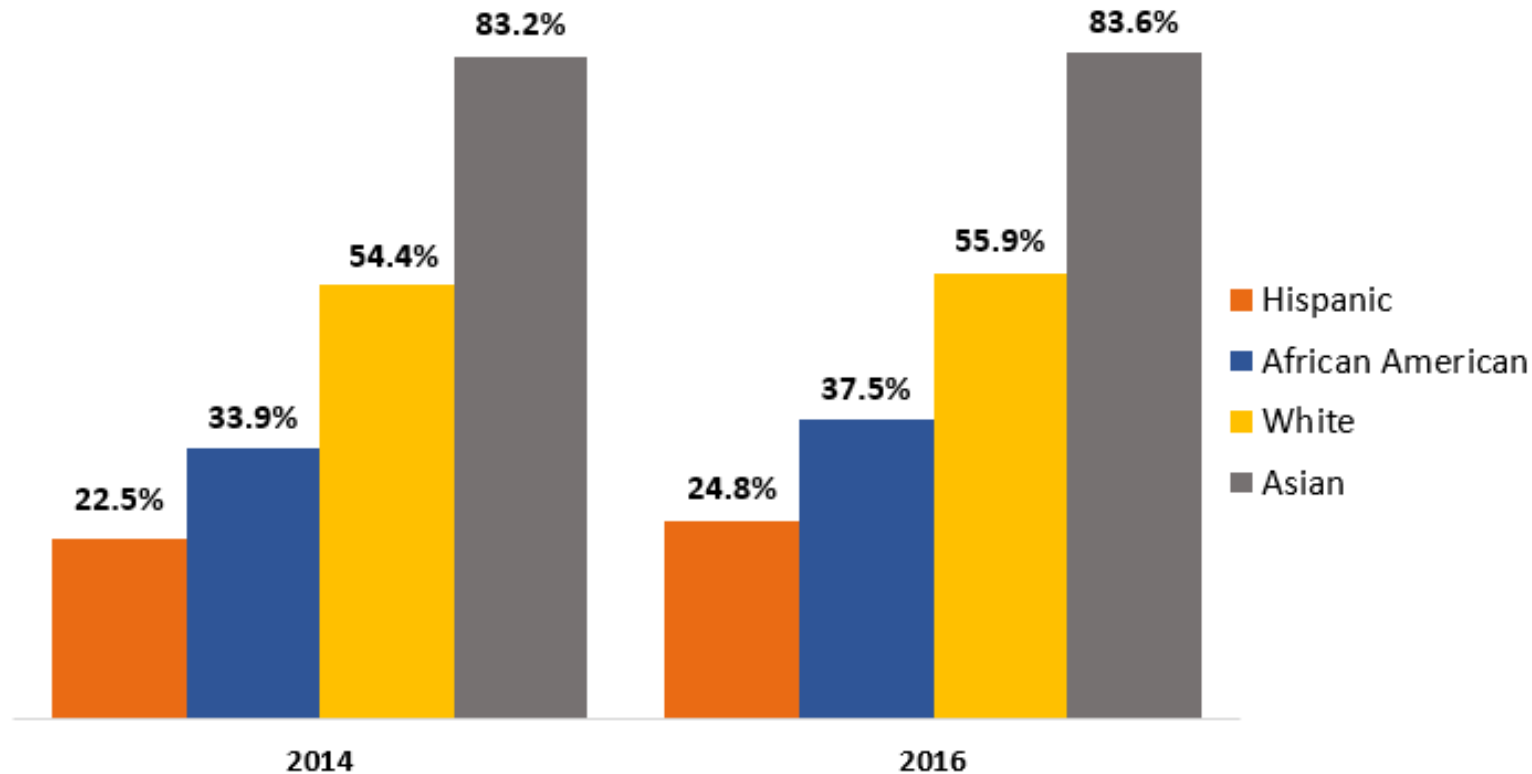
Percent of Texas Population Ages 25-34 with a Postsecondary Credential





## There are substantial attainment gaps across major demographic groups

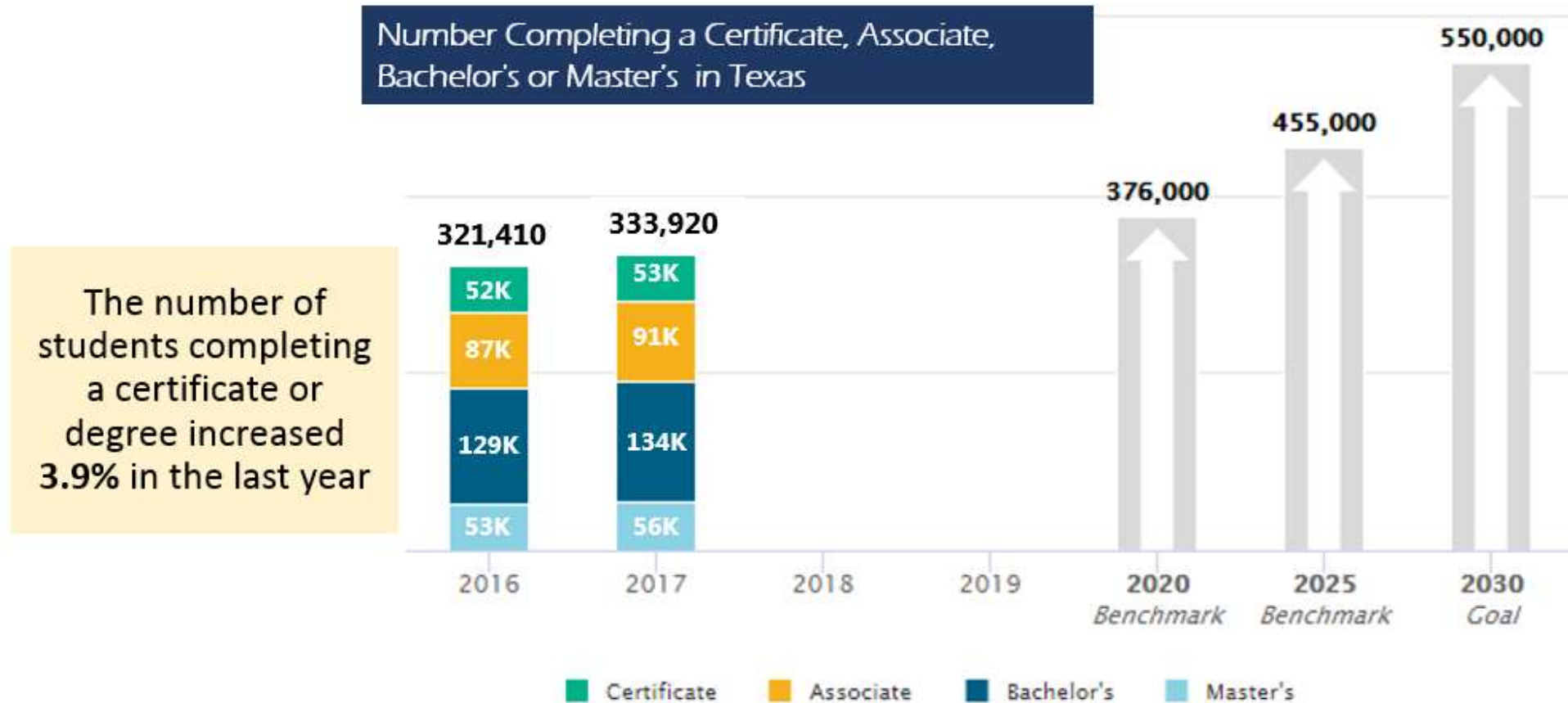
Percent of Population Ages 25-34 with a Certificate or Degree





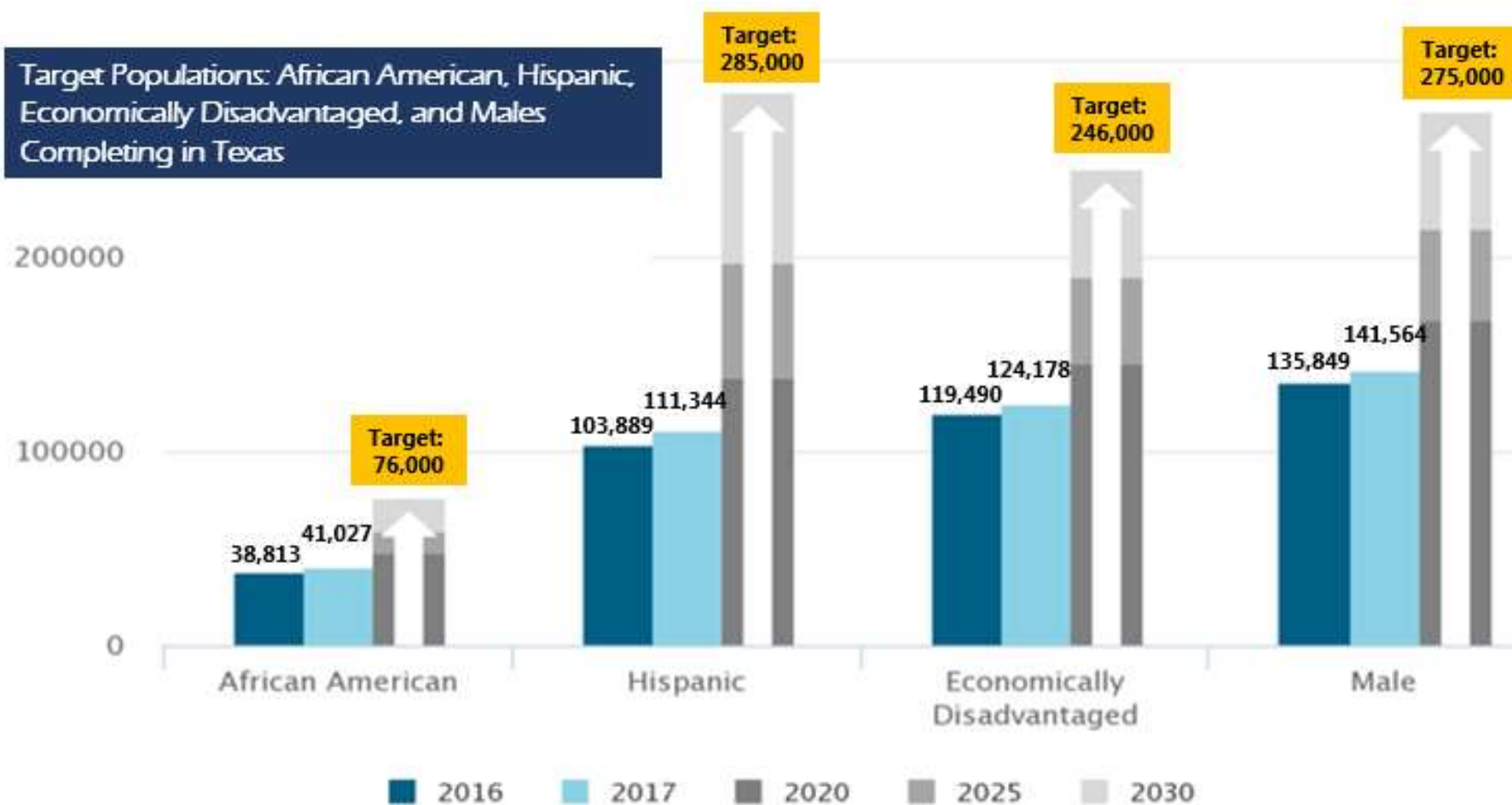
## COMPLETION

Goal: At least 550,000 students in 2030 will complete a certificate, associate, bachelor's, or master's from an institution of higher education in Texas





Achieving targets for **specific student groups** is central to meeting the completion goal





The 60x30TX completion goal includes a **target of increasing the percentage of Texas public high school graduates** enrolling directly into Texas higher education

Percentage of high school students enrolling directly into higher education

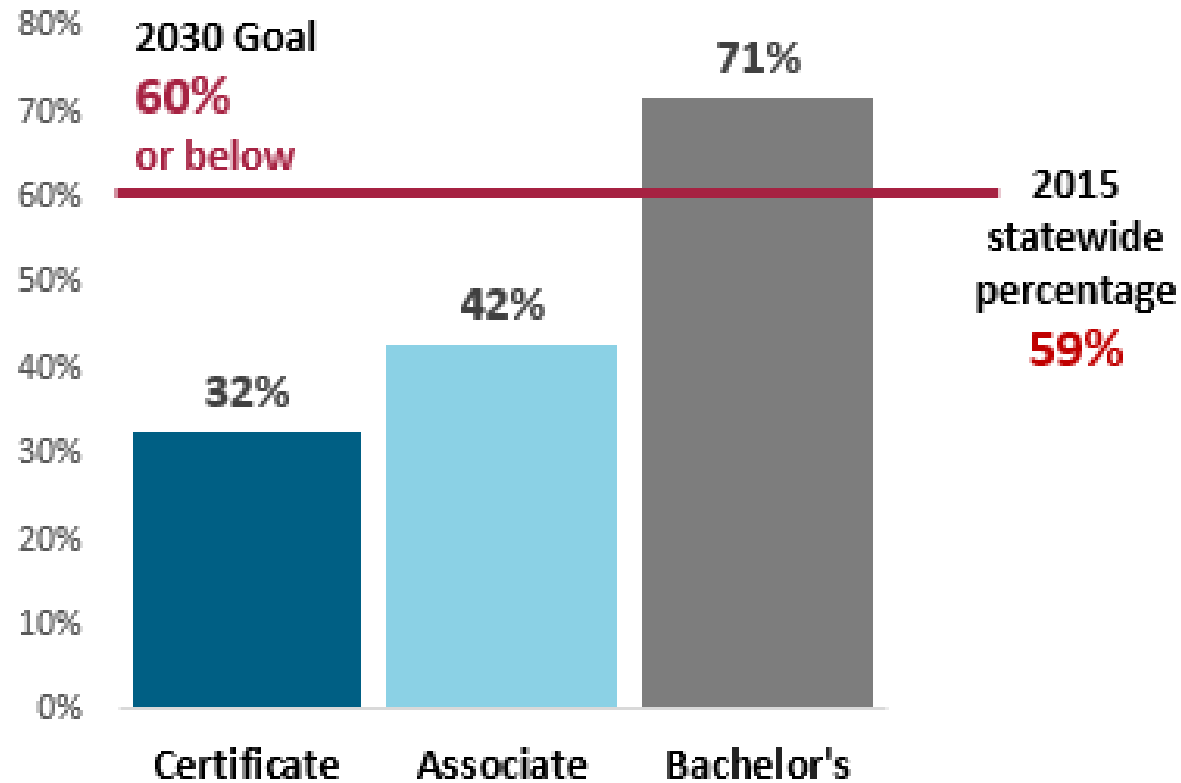
Baseline Year	Recent Trend Years		Target
2014	2015	2016	2030
54%	53%	52%	65%





## STUDENT DEBT

Goal: Undergraduate student loan debt will not exceed 60% of first-year wages for graduates of Texas public institutions





The debt goal has two targets to help **maintain undergraduate student loan debt** at or below 60% of first-year wages

**Target:** Limit debt to no more than half of all students who earn an undergraduate degree or certificate

**Status:** **47%** of undergraduates completed with debt in 2017

**Target:** Decrease the excess semester credit hours that students attempt in completing an associate or bachelor's degree

**Status:** **2 SCH** drop in **average SCH to Bachelor's degrees** at public universities

FY 2015 – 139 SCH      FY 2017 – 137 SCH

Est. Annual Tuition & Fees Savings: **\$61.2M**

**2 SCH** drop in **average SCH to Associate degrees** at public two-year institutions

FY 2015 – 88 SCH      FY 2017 – 86 SCH

Est. Annual Tuition & Fees Savings: **\$16.3M**

## 60x30TX regional targets promote **regional mobilization** and **strategy development**

---

- Regions and institutions differ in many ways. Institutional actions and outcomes are embedded in regional context.
- THECB has identified regional targets in three areas:
  - ✓ 60x30 Educated Population Goal
  - ✓ Completion Goal of 550,000 certificates, associate, bachelor's, and master's degrees
  - ✓ 65% High school-to-higher education direct enrollment
- Regions are convening locally to identify “best bet” strategies by August 2018



# Promising Policies and Programs

- ✓ **Innovative Educational Initiatives**
  - Texas Affordable Baccalaureate
  - GradTX
  - Corequisite delivery of developmental education
- ✓ **Efforts to improve timely completion**
  - Funding on student outcomes
  - Texas Pathways Project
  - Block scheduling
- ✓ **Online education programs**
- ✓ **Professional development**

# Texas is already seeing progress on 60x30TX metrics

Goal	Target	2016	2017	One-Year Improvement (pc = point change)	Annual % Increase Needed	2020 Benchmark	2030 Goal/Target
<b>60x30</b>	60x30 (Educated Population)	41.0%	42.3%	1.3% pc	1.3%	48%	60%
<b>Completion</b>	Overall	321,410	333,920	3.9%	3.9%	376,000	550,000
	Hispanic	103,889	111,344	7.2%	7.5%	138,000	285,000
	African American	38,813	41,027	5.7%	4.5%	48,000	76,000
	Male	135,849	141,564	4.2%	5.2%	168,000	275,000
	Economically Disadvantaged	119,490	124,178	3.9%	5.3%	146,000	246,000
	TX High School Graduates Enrolling in TX Higher Education	51.9%	Available May 2018		.7%	58%	65%
<b>Marketable Skills</b>	Working or Enrolled Within One Year	78.8%	78.4%	-0.40% pc	--	80%	80%
<b>Student Debt</b>	Student Loan Debt to First Year Wage Percentage	60%	59%	-1% pc	--	60%	60%
	Excess SCH Attempted*	19	18	-1 SCH	--	12	3
	Percent of Undergraduates Completing with Debt	48.2%	47.2%	-1% pc	--	50%	50%