

# Program Approval Lunch & Learn

July 31, 2023

- New Processes Overview
- Update on New Forms
- Q & A

PowerPoint & recording will be posted  
New rules can be found in [TAC Chapter 2](#)

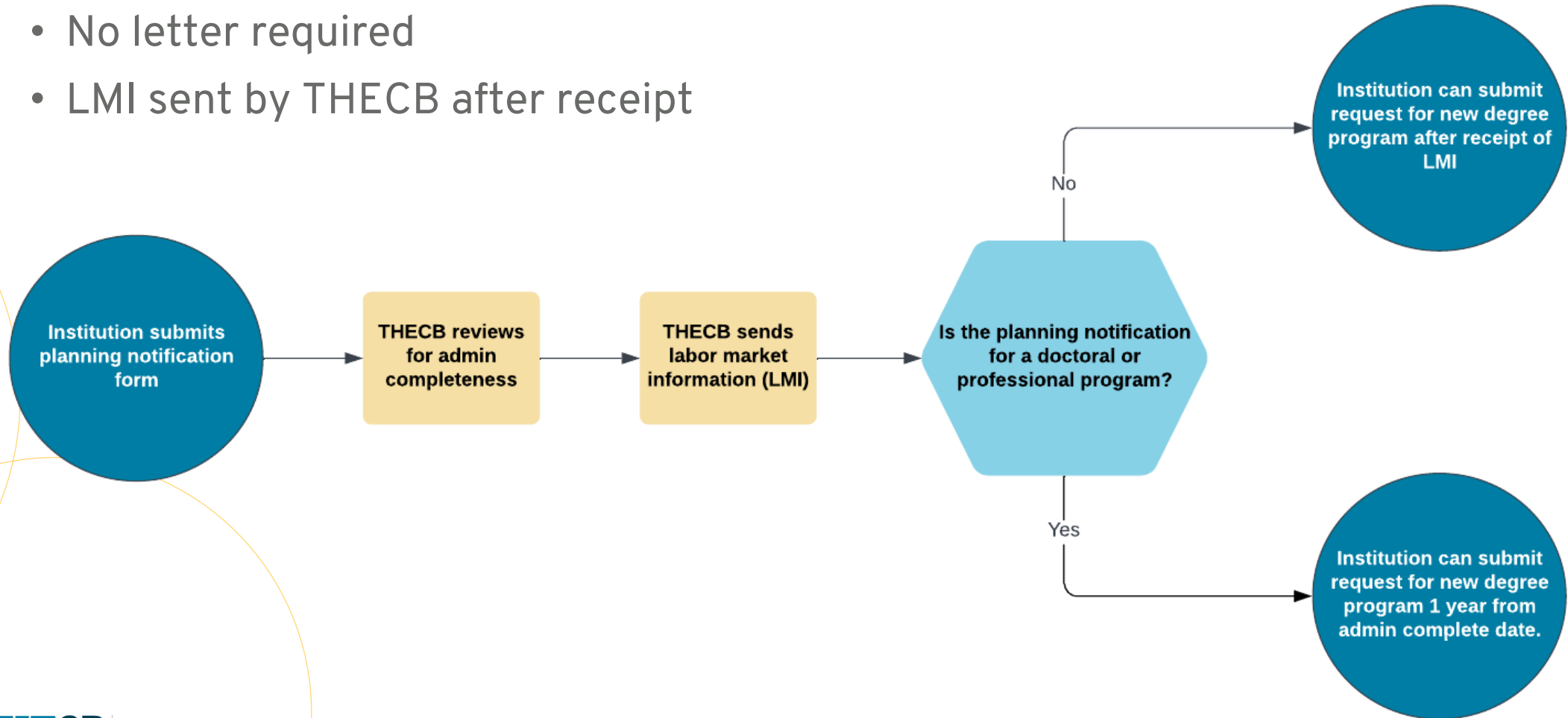
# New Processes Overview

# Approval Levels

Request Type	Approval Level	Effective Date
Embedded Associate	Assistant Commissioner	Currently Effective
Digital modality requests/changes (all levels)	Notification Only	Currently Effective
Planning Notification	Notification Only	Currently Effective
New Acad Assoc, Bach, Master's less than 50% new content	Assistant Commissioner	September 1, 2023
New Acad Assoc, Bach, Master's 50% or more new content	Commissioner	September 1, 2023
Doctoral & Professional	Board	September 1, 2023
New degree programs equal to a level change for institution	Board	September 1, 2023
Substantive changes to doctoral, professional or programs approved by the Board after September 1, 2023	Board	September 1, 2023
Other substantive and non-substantive changes	Assistant Commissioner	September 1, 2023
Program Closure	Notification Only	Currently Effective
New Academic Certificate (any SCH or level)	Notification Only	September 1, 2023

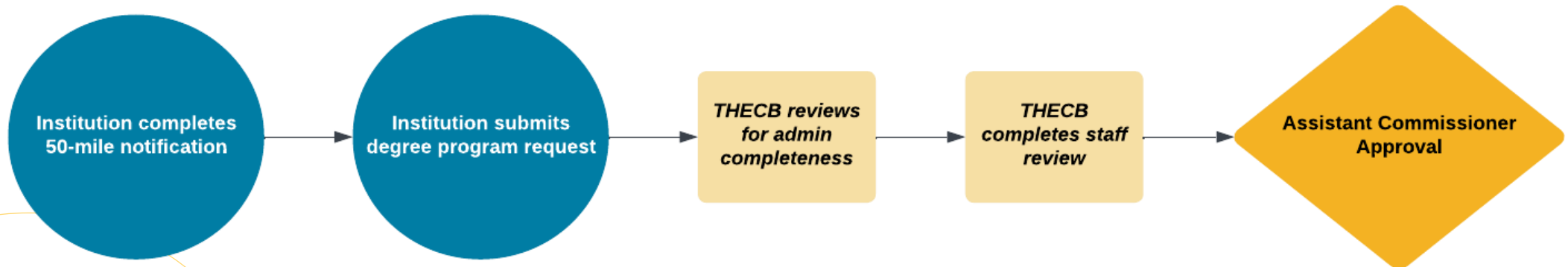
# Planning Notification

- Notable changes
  - No letter required
  - LMI sent by THECB after receipt



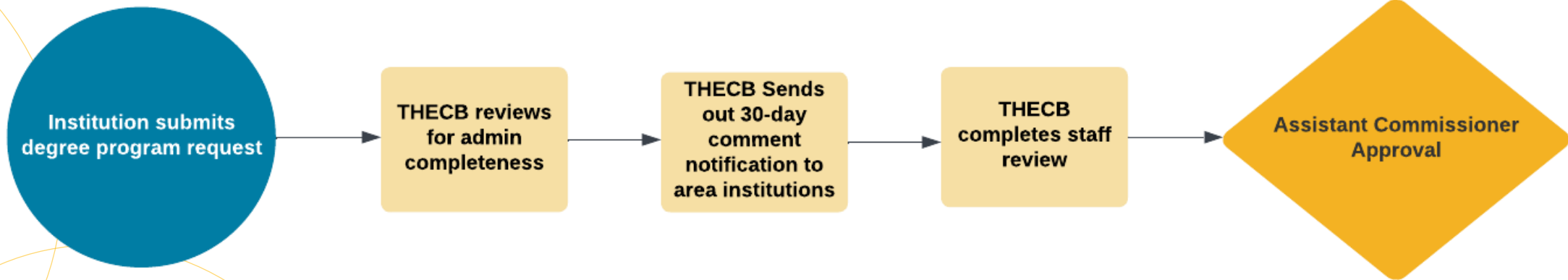
# Applied Associate & Workforce Certificates

- No notable changes to process – no rule changes affecting these requests
- Form has been revised and added to other online forms



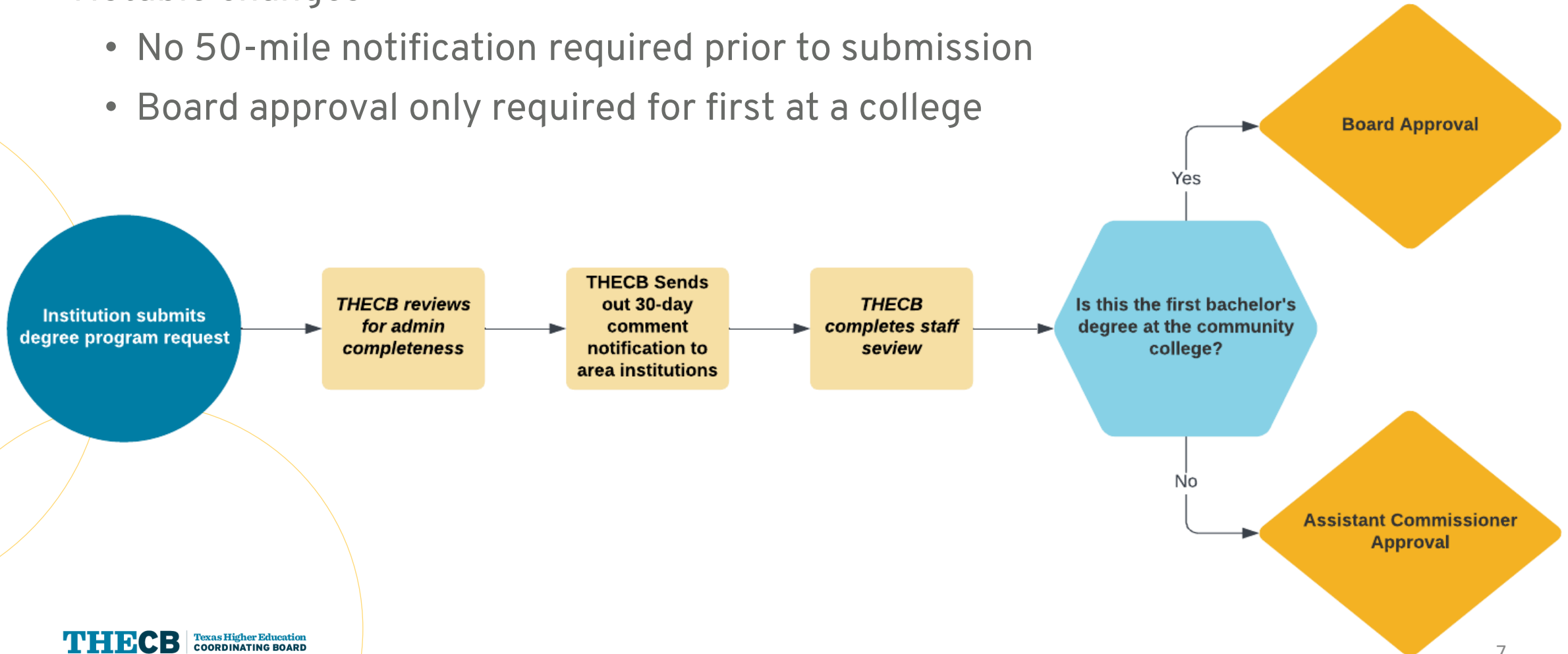
# Academic Associate

- Notable changes
  - No 50-mile notification required prior to submission
- Multidisciplinary associate degrees are exempt from planning notification requirement per statute



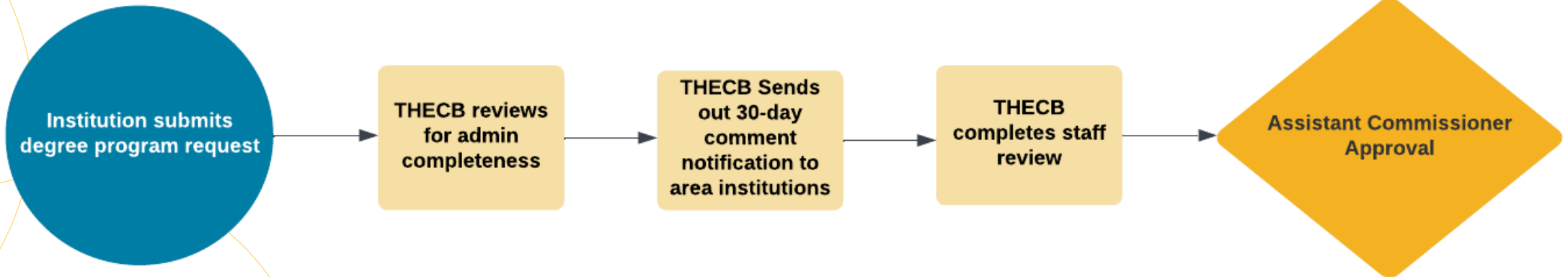
# Bachelor's degree at a community college

- Notable changes
  - No 50-mile notification required prior to submission
  - Board approval only required for first at a college



# Bachelor's and master's less than 50% new content

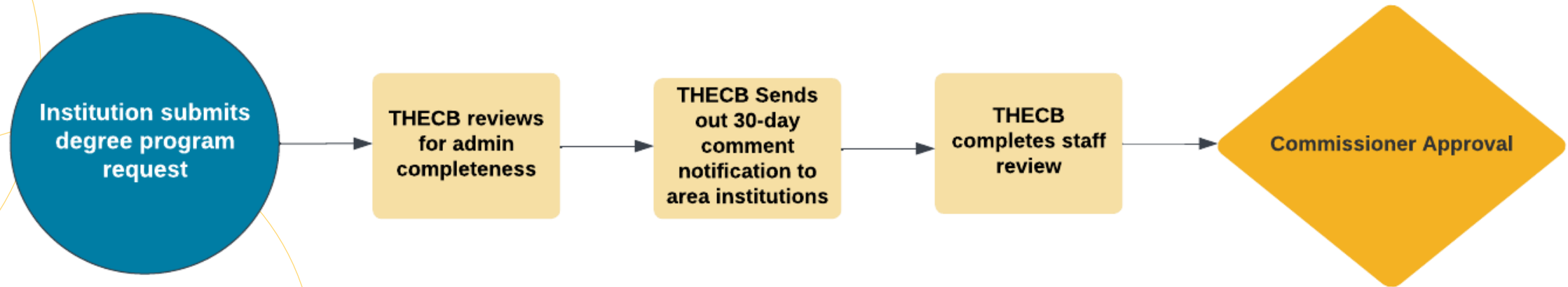
- Notable changes
  - No 50-mile notification required prior to submission
  - Alignment with SACSCOC new content threshold to determine how much information needs to be submitted





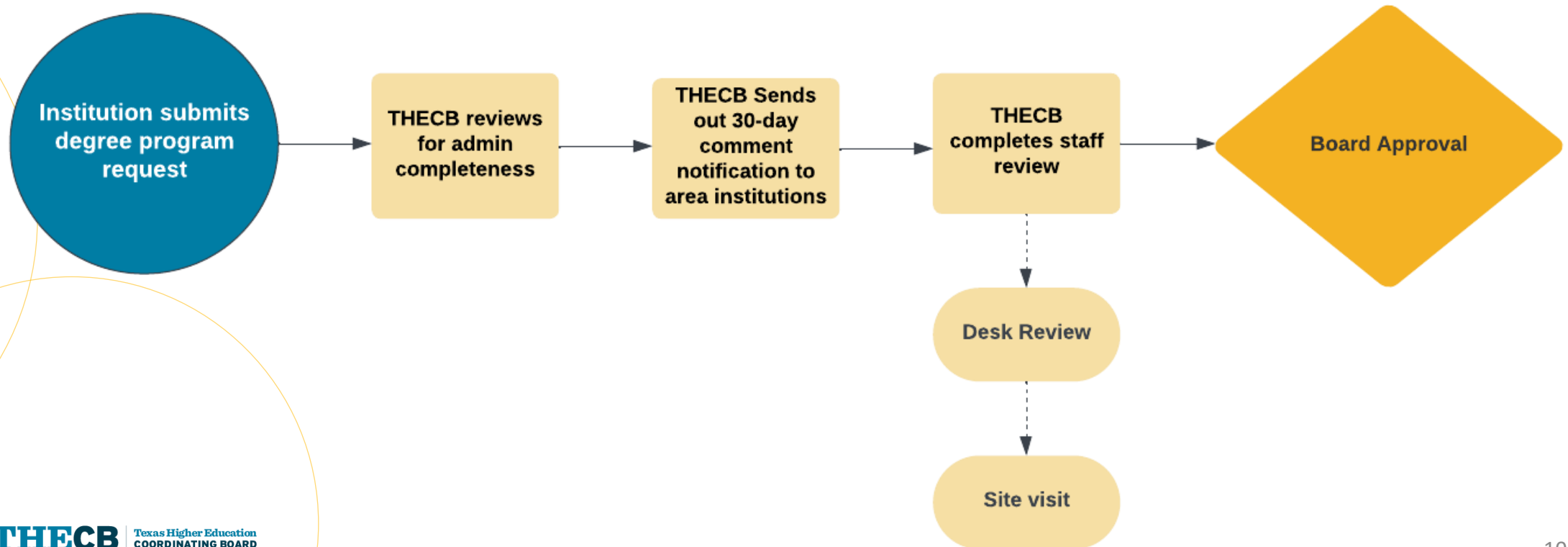
# Bachelor's and master's 50% or more new content

- Notable changes
  - No 50-mile notification required prior to submission
  - Alignment with SACSCOC new content threshold to determine how much information needs to be submitted
  - Elevated to new approval level (Commissioner)



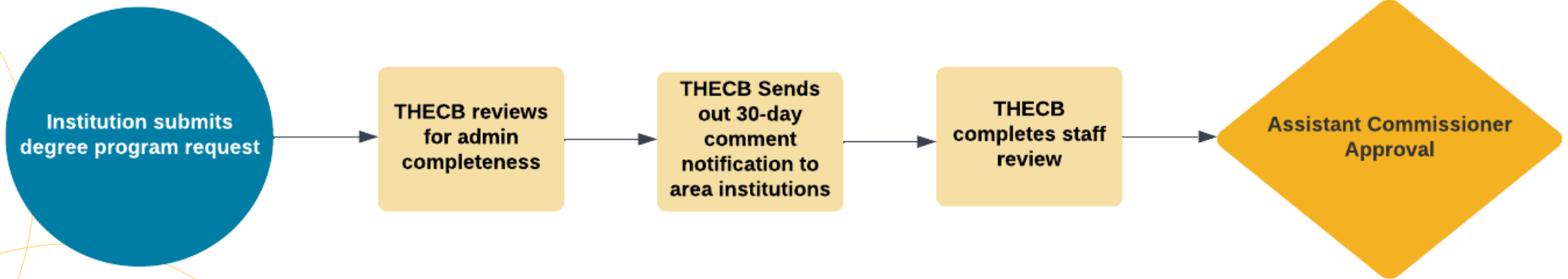
# Doctoral & Professional

- Notable changes
  - No 50-mile notification required prior to submission
  - 1-year waiting period after planning notification admin complete date for doctoral degrees



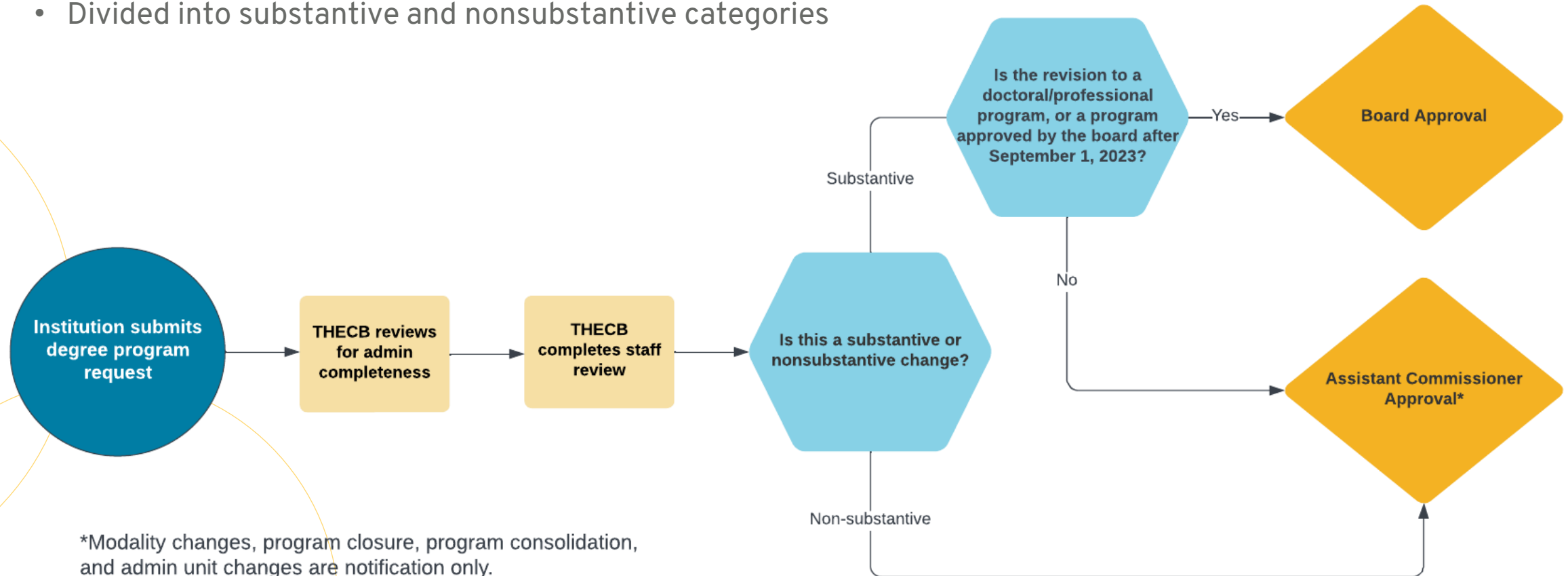
# Embedded Associate

- New degree program option
- Exempt from planning notification requirement



# Degree Program Changes

- Notable changes
  - Modality changes are now notification only for all degree levels
  - Divided into substantive and nonsubstantive categories



\*Modality changes, program closure, program consolidation, and admin unit changes are notification only.

# Degree Program Changes

## Non-Substantive

SCH Change

CIP Code Change

Degree Name or Designation  
Change

Program Consolidation

Off-Campus Requests

Other non-substantive revisions

## Substantive

Location Change (rare):  
Closing the program in one location and  
moving it to a second location.

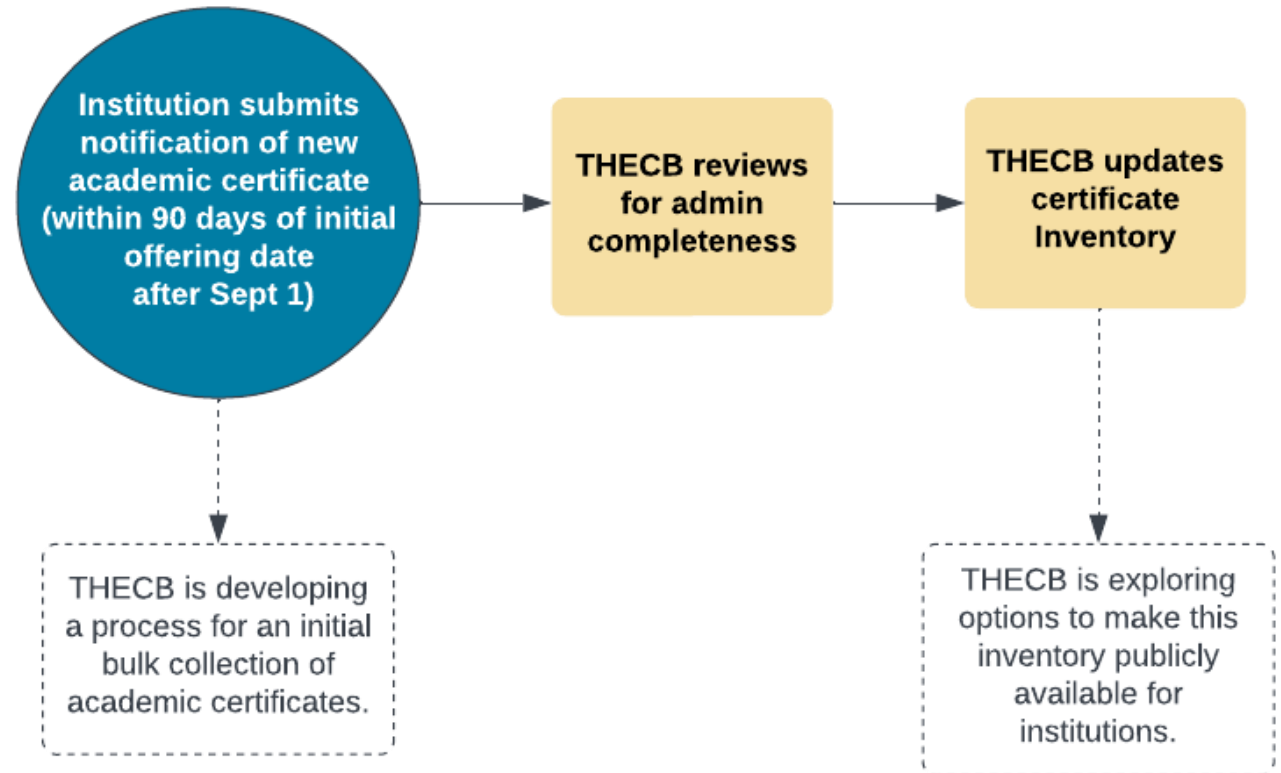
Funding Model Change:  
Changing the funding model from self-  
supported to formula-funded or vice  
versa.

Other substantive revisions

Modality changes, program closures, program consolidations, and admin unit changes are notification only.

# New Academic Certificates

- Notable changes
  - No 50-mile notification required prior to submission
  - No approval required before offering of certificates
  - No SCH or level threshold



# Update on New Forms

# New Forms

- Online forms with attachments (where applicable)
  - Degree programs and changes consolidated in to four forms
  - 50%+ new content, doctoral/professional, new bachelor's at a community college content will mostly be attachments
- No formal letter from institution is required



# Public Community & Technical College Form

- Applied associate and workforce certificates
- Academic associate degree
- Bachelor's degree at a community college

# Public University & Health Related Institution Form

- Embedded Associate
- New bachelor's or master's less than 50% new content
- New bachelor's or master's 50% or more new content

# Public University & Health Related Institution Doctoral & Professional Form

# Degree Program Changes Form

- Currently designed for public universities & HRIs; we are working to determine if it can also be used for CTCs.
- Requests included in the form:
  - CIP Code Change - *additional fields in new form*
  - SCH Change
  - Degree Title/Designation Change
  - Modality Change/Addition
  - Off-campus Change/Addition (*no rule changes*)
  - Funding Model Change – *additional fields in new form*
  - Admin Unit Change
  - Program Consolidation
  - Program Closure
  - “Other”

# Distance Education Changes

- Distance education information for *new* degree programs is integrated into new forms, rather than being a separate document/certification.
  - Separate request types for modality, off-campus, and funding changes.
- Approval via IPDE to offer distance education at the institutional level effective December 1, 2023
  - More information regarding the process for IPDE distance education approvals will be forthcoming.

# Next Steps

- Today's slides, (draft) forms and recording will be posted to the rule [implementation website](#)
- August 22<sup>nd</sup> lunch & learn - targeted towards those who will be responsible for submitting new requests/forms through the portal.
- August/September - updating of web content
- September 26<sup>th</sup> lunch & learn - open meeting to address questions related to forms and form submission
- Certificate form will be available no later than November 1, 2023

# Questions?