



---

---

---

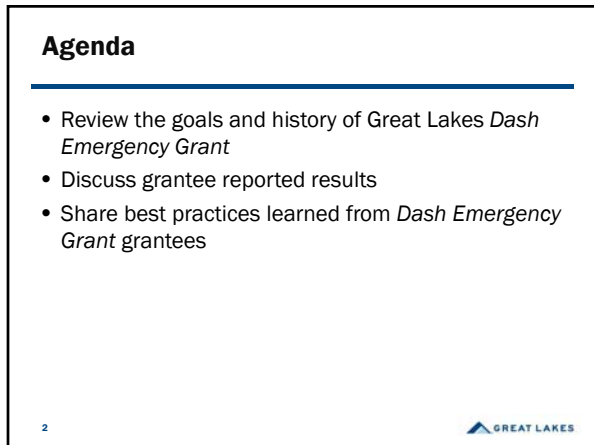
---

---

---

---

---



---

---

---

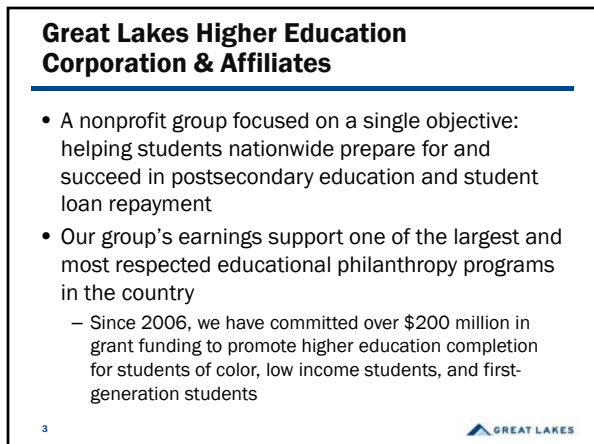
---

---

---

---

---



---

---

---

---

---

---

---

---



## Dash Emergency Grant Goals

---

---

---

---

---

---

---

---

### The Problem

---

- Financial aid, grants and scholarships help low-income students overcome financial barriers and enroll in college
- But once enrolled, unexpected financial emergencies can force these students into making tough choices—leaving college is often seen as the only option

5



---

---

---

---

---

---

---

---

### The Solution

---

- As part of their student success strategy, colleges provide grants to alleviate the emergency
- When colleges help low-income students overcome unforeseen financial emergencies, students stay in college at better rates and graduate in larger numbers

6



---

---

---

---

---

---

---

---

## Our Goals

---

- Help more low-income students stay in college and graduate
- Help colleges implement and sustain emergency grants as part of their overall student success plan
- Learn if and how outcomes vary by college type and student demographics

7



---

---

---

---

---

---

---

---

## History

---

### 2012-2015 Dash Emergency Grant

- \$1.5 million awarded to each of the 16 colleges of the Wisconsin Technical College System

### 2016-2018 Dash Emergency Grant

- \$1.5 million awarded to 31 two-year colleges in Iowa, Minnesota, Ohio, and Wisconsin

### 2017-2019 Dash Emergency Grant

- \$7.2 million awarded to 32 four-year colleges in six states

8



---

---

---

---

---

---

---

---

## Dash Emergency Grant Overview

---

- An emergency grant program for low-income students
- Colleges ensure students are aware of the program and how to apply
- Colleges work with students, make award determinations, and make third-party payments
- Colleges contribute 10-15% of emergency grant funds

9



---

---

---

---

---

---

---

---

## Dash Emergency Grant Overview

- How Great Lakes prepares grantees for success
  - Fund an implementation period for staff training
  - Provide a proven, turnkey online application and reporting system at no cost – including training
  - Provide ongoing support by our Program Managers
  - Fund administrative costs to help offset the cost of administering the program

10



---

---

---

---

---

---

---

---

## Definition of Financial Emergency

- An unforeseen expense that, if not resolved quickly, could lead to the student's departure from the college and loss of momentum toward completion
- Categories include
  - Utilities
  - Housing/rent
  - Food
  - Medical/dental
  - Transportation
  - Child care

11



---

---

---

---

---

---

---

---



---

---

---

---

---

---

---

---

## 2012-2015 Dash Emergency Grant

### Grantee Reported Data

- 73% of Pell-eligible emergency grant recipients graduated or remained enrolled the semester immediately after receiving the emergency grant

### National Data

- 59% retention rate for all students at public two-year institutions\*

13 \*National Center for Education Statistics




---

---

---

---

---

---

---

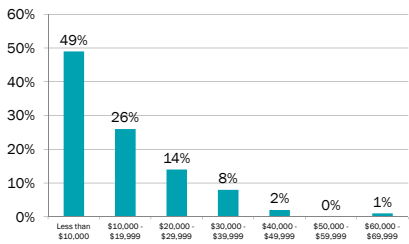
---

---

---

## 2016-2018 Dash Emergency Grant

Self-Reported Recipient Family Income



14 \*Grantee reported data for period January 1, 2016 - May 31, 2016




---

---

---

---

---

---

---

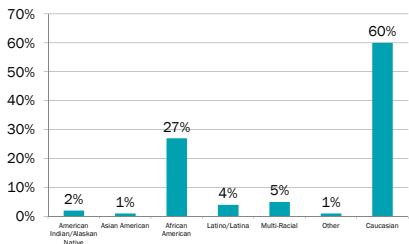
---

---

---

## 2016-2018 Dash Emergency Grant

Self Reported Student Demographics



15 \*Grantee reported data for period January 1, 2016 - May 31, 2016




---

---

---

---

---

---

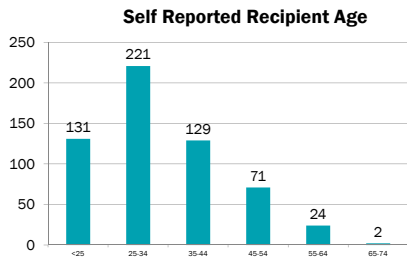
---

---

---

---

## 2016-2018 Dash Emergency Grant



16 \*Grantee reported data for period January 1, 2016 - May 31, 2016




---

---

---

---

---

---

---

---

---

---

---

---

## 2016-2018 Dash Emergency Grant

Category	Average Request	Average Award	% of all awards
Child Care	\$333	\$309	2%
Food	\$195	\$172	5%
Gas	\$135	\$142	4%
Housing	\$531	\$441	36%
Medical	\$407	\$323	4%
Other	\$323	\$283	4%
Transit	\$120	\$99	1%
Utilities	\$363	\$347	19%
Vehicle	\$494	\$414	26%
<b>Total</b>	<b>\$659</b>	<b>\$445</b>	

17 \*Grantee reported data for period January 1, 2016 - May 31, 2016




---

---

---

---

---

---

---

---

---

---

---

---




---

---

---

---

---

---

---

---

---

---

---

---

### What We Learned from the 2012-2015 Dash Emergency Grant

- The need is real
- The results are encouraging
- What makes a successful emergency grant program

19



---

---

---

---

---

---

---

---

### The Need is Real

- The grants averaged around \$500
- Top three causes of the financial emergency:
  - Housing
  - Utilities
  - Transportation

20



---

---

---

---

---

---

---

---

### The Results are Encouraging

- | Grantee Reported Data   | National Data  |
|---|--|
| <ul style="list-style-type: none"><li>• 73% of Pell-eligible emergency grant recipients graduated or remained enrolled the semester immediately after receiving the emergency grant</li></ul> | <ul style="list-style-type: none"><li>• 59% retention rate for all students at public two-year institutions*</li></ul> |

21 \*National Center for Education Statistics



---

---

---

---

---

---

---

---

**Characteristics of Successful  
Emergency Grant Programs**

- Actively promote the availability of emergency grants
- Train faculty on the program and its benefits
- Promote an affirming message to students
- Agree on a definition of “financial emergency”
- Identify the root cause of a financial emergency
- Coordinate seamless collaboration between student services, financial aid and business offices

22



---

---

---

---

---

---

---

---

**Characteristics of Successful  
Emergency Grant Programs**

- Make the in-take process timely
- Streamline administrative functions for responsiveness
- Address chronic financial emergencies
- Develop detailed training documentation
- Fundraise actively to assure program sustainability
- Connect with other colleges offering emergency grant programs

23



---

---

---

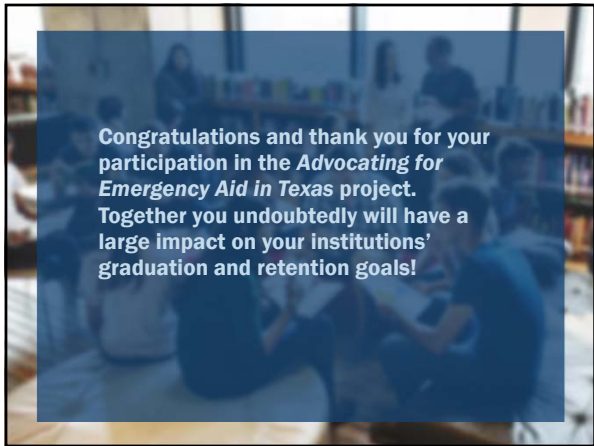
---

---

---

---

---



---

---

---

---

---

---

---

---





**Questions?**

Benjamin P. Dobner  
Director - Education Grantmaking  
800-345-5815  
bdobner@glhec.org

 GREAT LAKES

---

---

---

---

---

---

---

---



**Thank You**

  
**GREAT LAKES**  
GREAT LAKES HIGHER EDUCATION CORPORATION AND AFFILIATES

---

---

---

---

---

---

---

---