



Accountability System Measures Update



Texas Higher Education Coordinating Board

Julie Eklund, Assistant Commissioner,
Strategic Planning and Funding




1

The accountability system has several purposes

- Created in response to 2004 Executive Order from then-Governor Perry

“...provide the citizens of Texas, the Governor, and the Legislature with the information necessary to determine the effectiveness and quality of the education students receive at individual institutions...and evaluate the institutions’ use of state resources.”

- Designed to:
 - help stakeholders evaluate and compare institutional outcomes
 - signal key higher education priorities
 - drive institutional improvement



2

The two primary reasons for revising the measures were

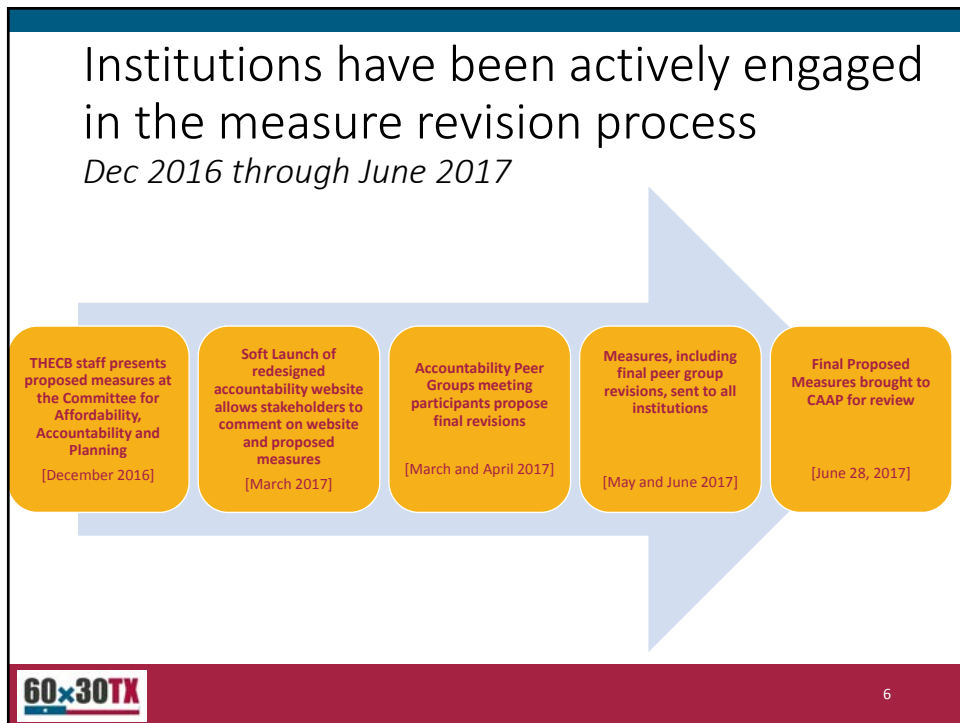
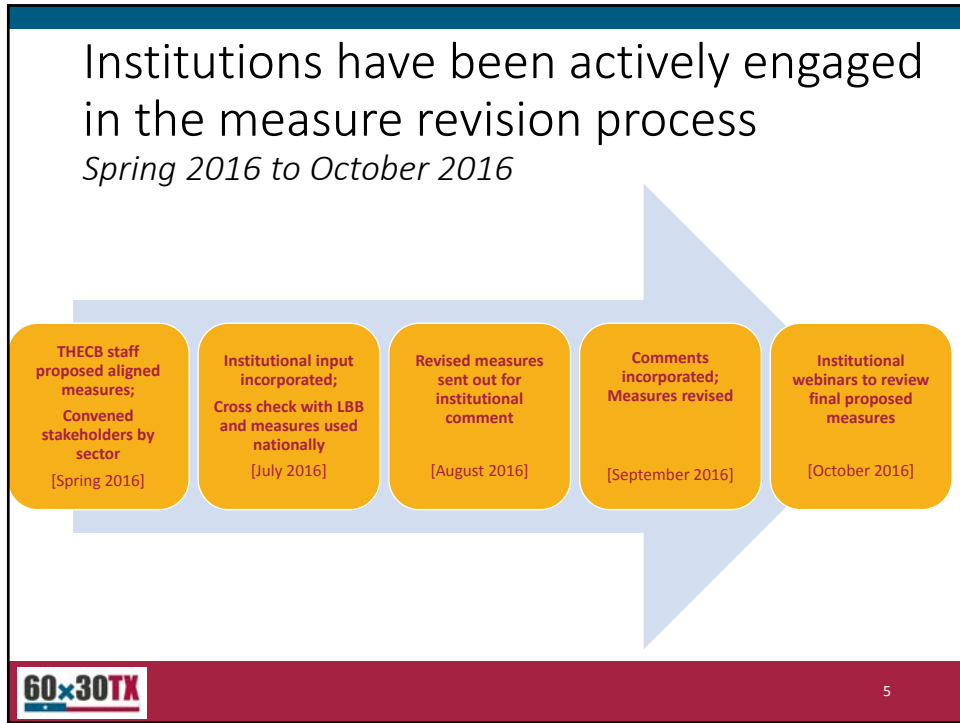
- To align the measures to *60x30TX*, the state plan for Texas Higher Education; and
- To reduce the number of measures to focus on state priorities



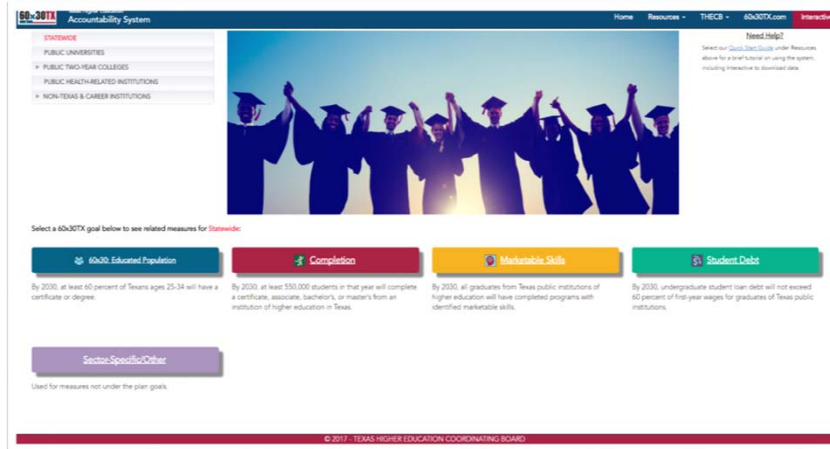
Institutional measures were streamlined for maximum impact

Sector	CTG Accountability System	60x30TX Accountability System	Reduction
Public University	67 measures	38 measures	29 measures -43%
Public Two-Year Colleges	39 measures	33 measures	6 measures -15%
Public Health Related Institutions	36 measures	23 measures	13 measures -36%





The proposed measures and related data are available on the redesigned accountability website at www.txhighereddata.org/acctpub



The 60x30 Educated Population measure is a statewide measure, as it is not applicable to individual institutions

60x30 Goal	Sample Measures
Educated Population	<ul style="list-style-type: none"> 60x30 –percent of 25-34 year old population with a degree or certificate



Completion measures highlight institutional as well as statewide progress

60x30TX Goal	Sample Measures
Completion	<ul style="list-style-type: none"> • Completion by level of credential (certificates, associate, bachelor's, and master's degrees) <ul style="list-style-type: none"> • Hispanic completion • African American completion • Male completion • Economically disadvantaged completion • <i>Graduation rates</i> • <i>Persistence rates</i> • <i>Success among underprepared students</i>

Note: Measures in *italics* are not 60x30TX goals or targets.



Marketable skills measures focus on workforce outcomes

60x30TX Goal	Sample Measures
Marketable Skills	<ul style="list-style-type: none"> • Working/enrolled within one year after award • <i>Rates of certification and licensure</i>

Measures in *italics* are not 60x30TX goals or targets.



Student debt measures highlight factors related to maintaining affordability

60x30TX Goal	Sample Measures
Student Debt	<ul style="list-style-type: none"> • Median student debt as a percentage of first-year wage • Percent of graduates with debt • Average semester credit hours attempted in excess of degree plan • <i>Percent of attempted semester credit hours completed</i>



Methodologies for calculating measures generated the most discussion in the final stages of the process

- HRIs are proposed to be included in additional measures
- Excess semester credit hours at 2-year colleges are calculated only for a first associate degree
- By rule, institutions must provide data required for accountability measures.
 - The data elements currently collected support all of the proposed final measures; no new data element collection is anticipated



Questions on the measure update process or spreadsheet?

With accompanying legend to support the content

Item	Item	Item
1. Measure Update Process	2. Measure Update Process	3. Measure Update Process
4. Measure Update Process	5. Measure Update Process	6. Measure Update Process
7. Measure Update Process	8. Measure Update Process	9. Measure Update Process
10. Measure Update Process	11. Measure Update Process	12. Measure Update Process
13. Measure Update Process	14. Measure Update Process	15. Measure Update Process
16. Measure Update Process	17. Measure Update Process	18. Measure Update Process
19. Measure Update Process	20. Measure Update Process	21. Measure Update Process
22. Measure Update Process	23. Measure Update Process	24. Measure Update Process
25. Measure Update Process	26. Measure Update Process	27. Measure Update Process
28. Measure Update Process	29. Measure Update Process	30. Measure Update Process
31. Measure Update Process	32. Measure Update Process	33. Measure Update Process
34. Measure Update Process	35. Measure Update Process	36. Measure Update Process
37. Measure Update Process	38. Measure Update Process	39. Measure Update Process
40. Measure Update Process	41. Measure Update Process	42. Measure Update Process
43. Measure Update Process	44. Measure Update Process	45. Measure Update Process
46. Measure Update Process	47. Measure Update Process	48. Measure Update Process
49. Measure Update Process	50. Measure Update Process	51. Measure Update Process
52. Measure Update Process	53. Measure Update Process	54. Measure Update Process
55. Measure Update Process	56. Measure Update Process	57. Measure Update Process
58. Measure Update Process	59. Measure Update Process	60. Measure Update Process
61. Measure Update Process	62. Measure Update Process	63. Measure Update Process
64. Measure Update Process	65. Measure Update Process	66. Measure Update Process
67. Measure Update Process	68. Measure Update Process	69. Measure Update Process
70. Measure Update Process	71. Measure Update Process	72. Measure Update Process
73. Measure Update Process	74. Measure Update Process	75. Measure Update Process
76. Measure Update Process	77. Measure Update Process	78. Measure Update Process
79. Measure Update Process	80. Measure Update Process	81. Measure Update Process
82. Measure Update Process	83. Measure Update Process	84. Measure Update Process
85. Measure Update Process	86. Measure Update Process	87. Measure Update Process
88. Measure Update Process	89. Measure Update Process	90. Measure Update Process
91. Measure Update Process	92. Measure Update Process	93. Measure Update Process
94. Measure Update Process	95. Measure Update Process	96. Measure Update Process
97. Measure Update Process	98. Measure Update Process	99. Measure Update Process
100. Measure Update Process	101. Measure Update Process	102. Measure Update Process

