

# Space Usage Efficiency (SUE)

Thomas E. Keaton, MPA

Director, Funding and Resource Planning

Texas Higher Education Coordinating Board

November 29, 2018



Texas Higher Education  
Coordinating Board

# Agenda

- Purpose
- Factor Overview
- Process
- Examples
- Supplemental use
- Institutional impacts

# Why are we doing this?

- Texas Education Code 61.0572(b):

*(b) The board shall:*

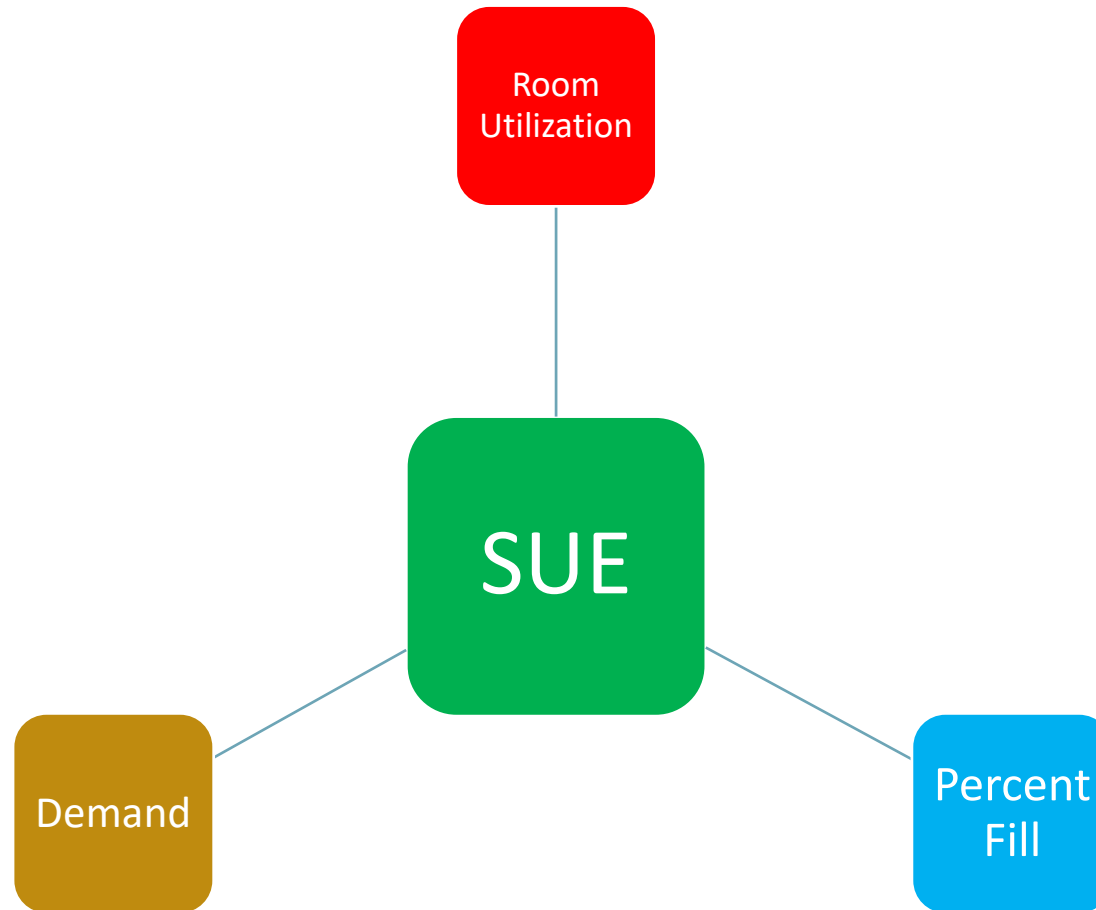
*(1) determine formulas for space utilization in all educational and general buildings and facilities at institutions of higher education;*

*(2) devise and promulgate methods to assure maximum daily and year-round use of educational and general buildings and facilities, including but not limited to maximum scheduling of day and night classes and maximum summer school enrollment*

- Project review standards

Institution Project Name	Project Cost	Standard Met Yes/No			
		Space Usage	Space Need	Cost	Building Efficiency
Texas Tech Health Sciences Center (TRB) <i>Construct Lubbock Education, Research and Technology and West Expansion</i>	\$85,900,000	NA	Yes	Yes	Yes
Texas Tech Health Sciences Center - El Paso (TRB) <i>Construct Medical Science Building II</i>	\$84,400,000	NA <sup>1</sup>	No	Yes	Yes
The University of Texas Health Science Center at San Antonio <i>Construct Relocated Barshop Institute</i>	\$70,200,000	NA <sup>1</sup>	Yes	Yes	No

# Factor Overview

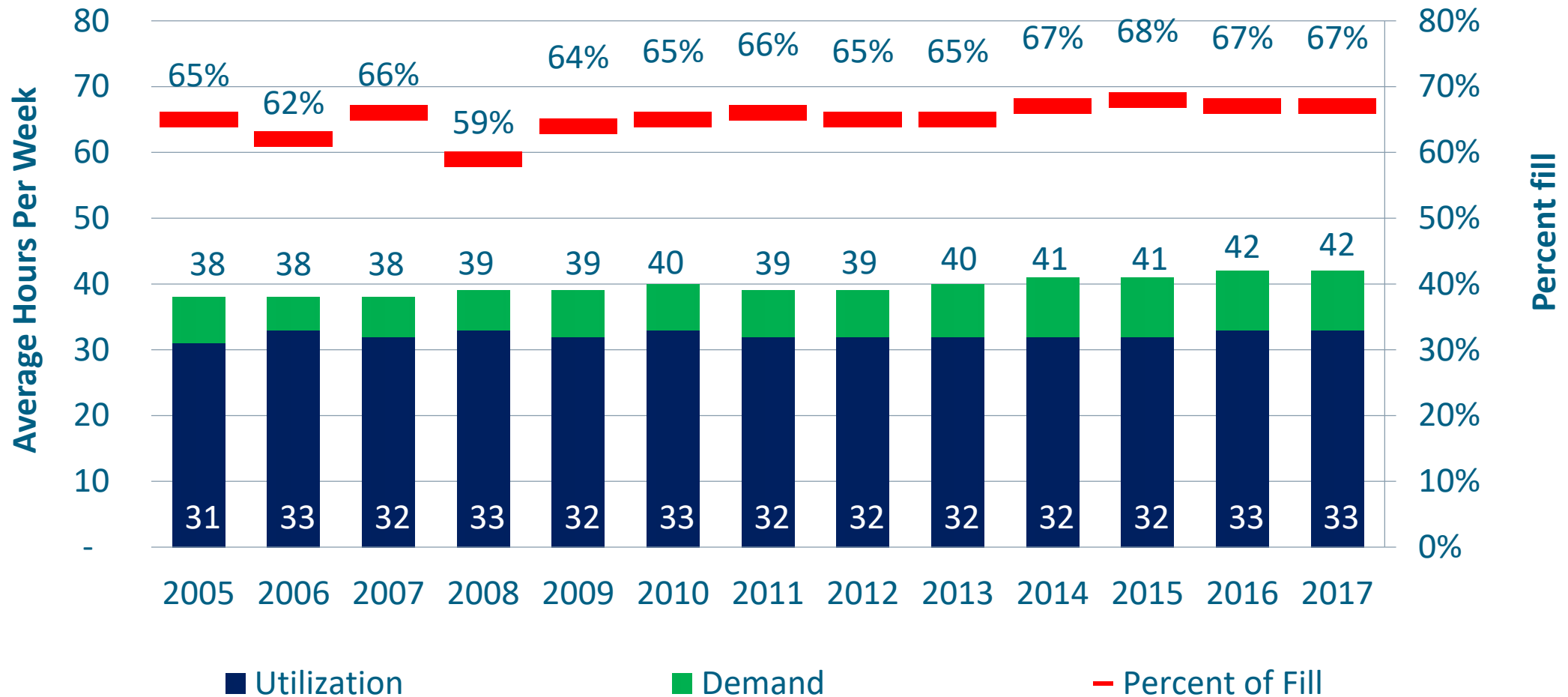


# Raw Data are Scaled for ease of use

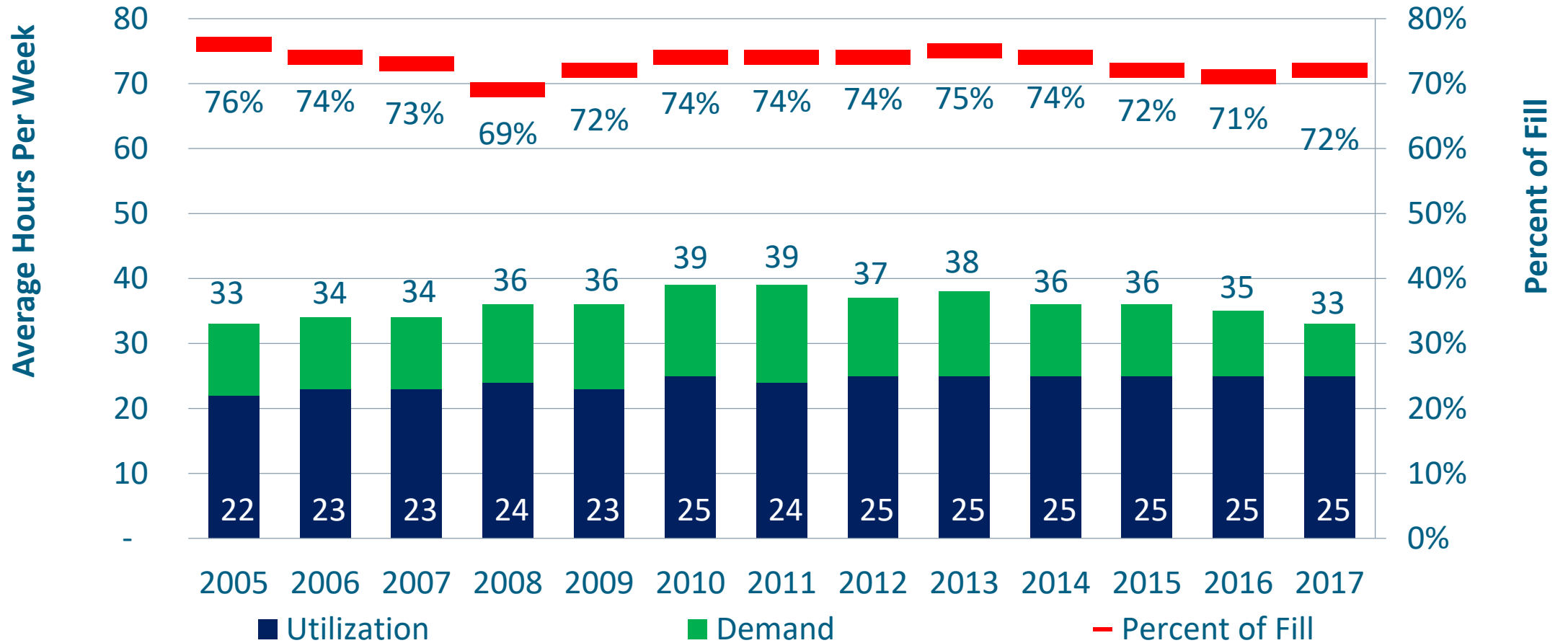
- Data are indexed to a 100 point scale for each type of room
- Standard
  - 75 per category
  - 150 overall

Classroom						Class Laboratory					
Demand		Utilization		Percent of Fill		Demand		Utilization		Percent of Fill	
≥45	36	≥38	32	≥65	32	≥35	36	≥25	32	≥75	32
≥38	27	≥34	24	≥55	24	≥30	27	≥20	24	≥65	24
≥31	18	≥30	16	≥45	16	≥25	18	≥15	16	≥55	16
<31	9	<30	8	<45	8	<25	9	<15	8	<55	8

# Statewide Classroom Usage Trend



# Statewide Class Laboratory Usage Trend



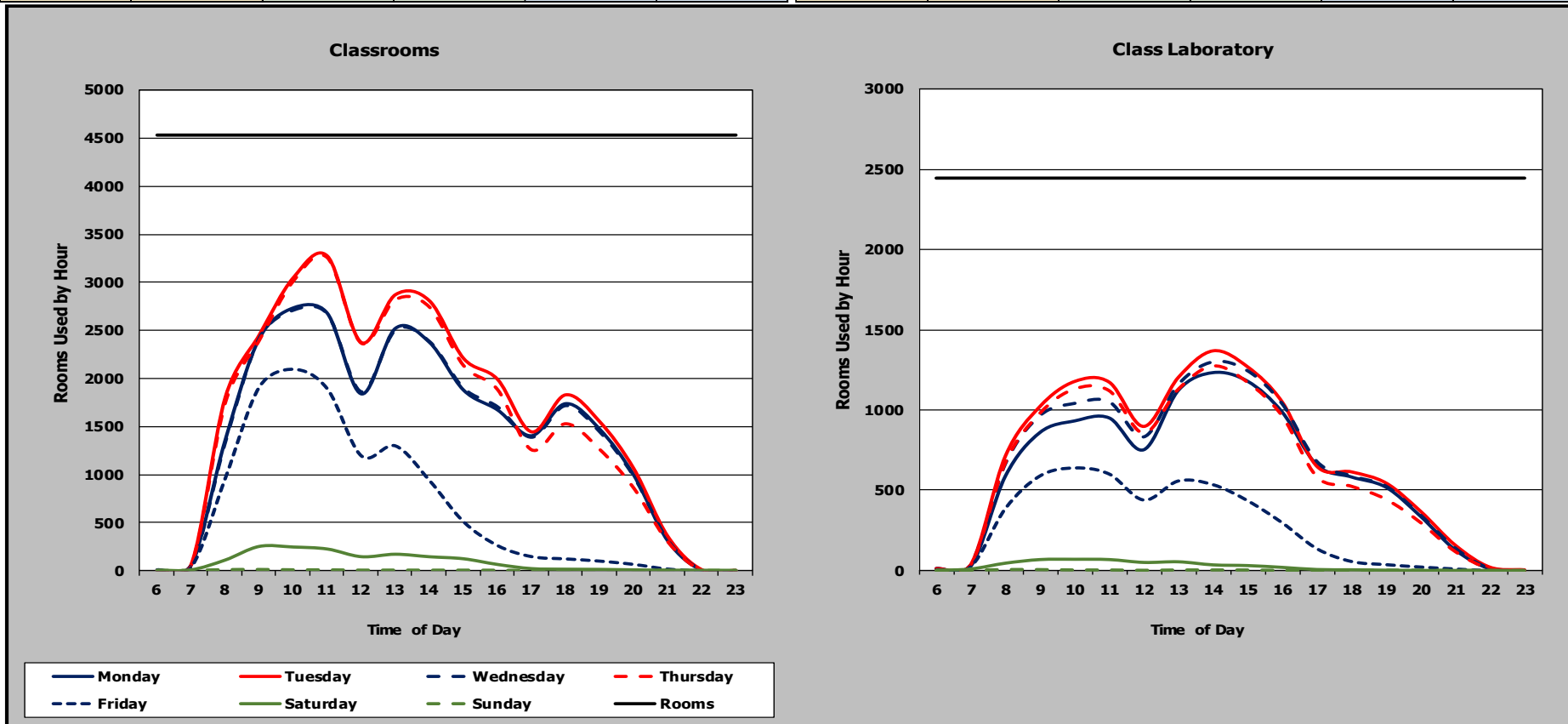
# Scheduling Patterns and Opportunities

## Statewide

Overall: 167

Classroom				Score: 75	
Demand		Utilization		Average Percent Fill	
Hours per Week	Weighted Score	Hours per Week	Weighted Score	Percent	Weighted Score
41	27	32	16	67%	32

Class Laboratory				Score: 92	
Demand		Utilization		Average Percent Fill	
Hours per Week	Weighted Score	Hours per Week	Weighted Score	Percent	Weighted Score
36	36	25	32	74%	24



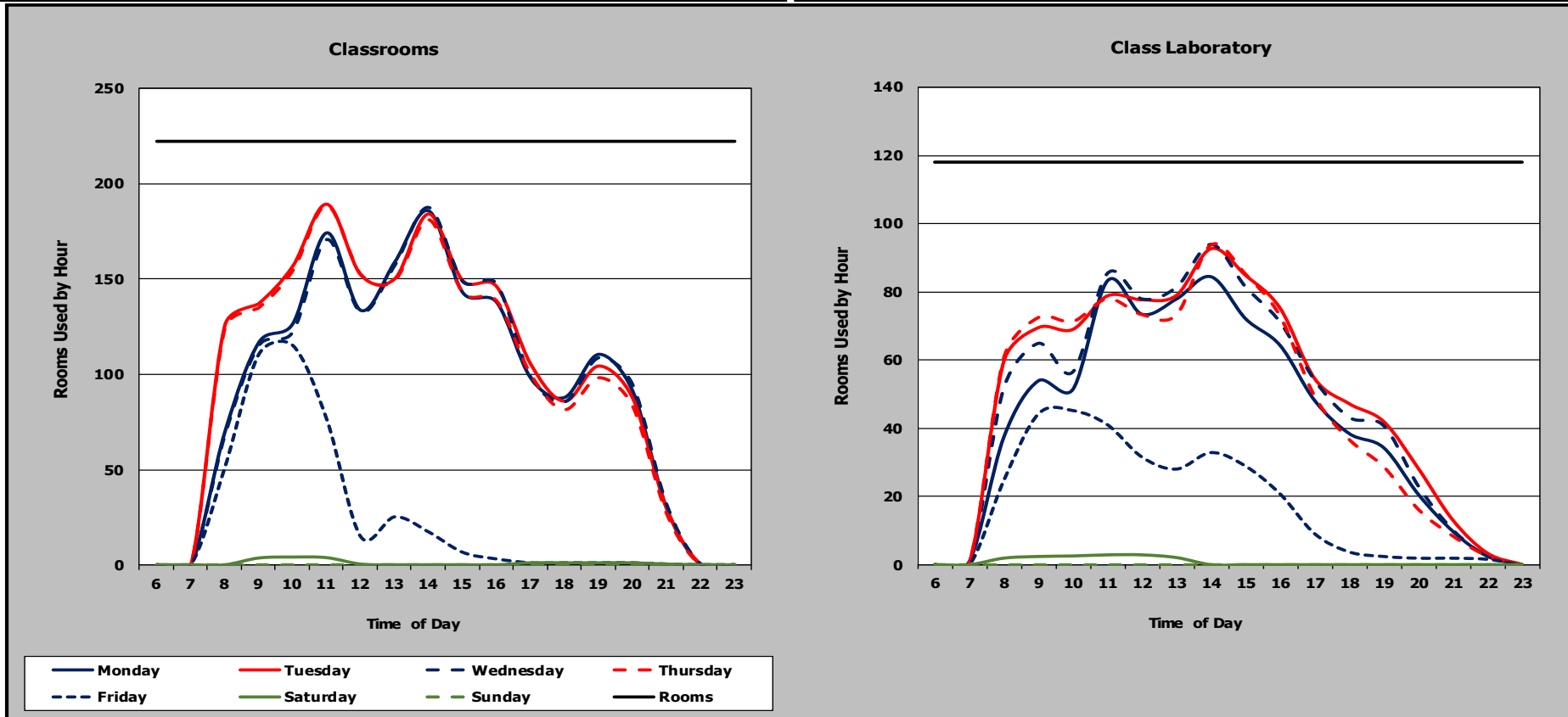


# High Scoring

Overall: 200

Classroom				Score: 100	
Demand		Utilization		Average Percent Fill	
Hours per Week	Weighted Score	Hours per Week	Weighted Score	Percent	Weighted Score
48	36	40	32	73%	32

Class Laboratory				Score: 100	
Demand		Utilization		Average Percent Fill	
Hours per Week	Weighted Score	Hours per Week	Weighted Score	Percent	Weighted Score
45	36	37	32	81%	32

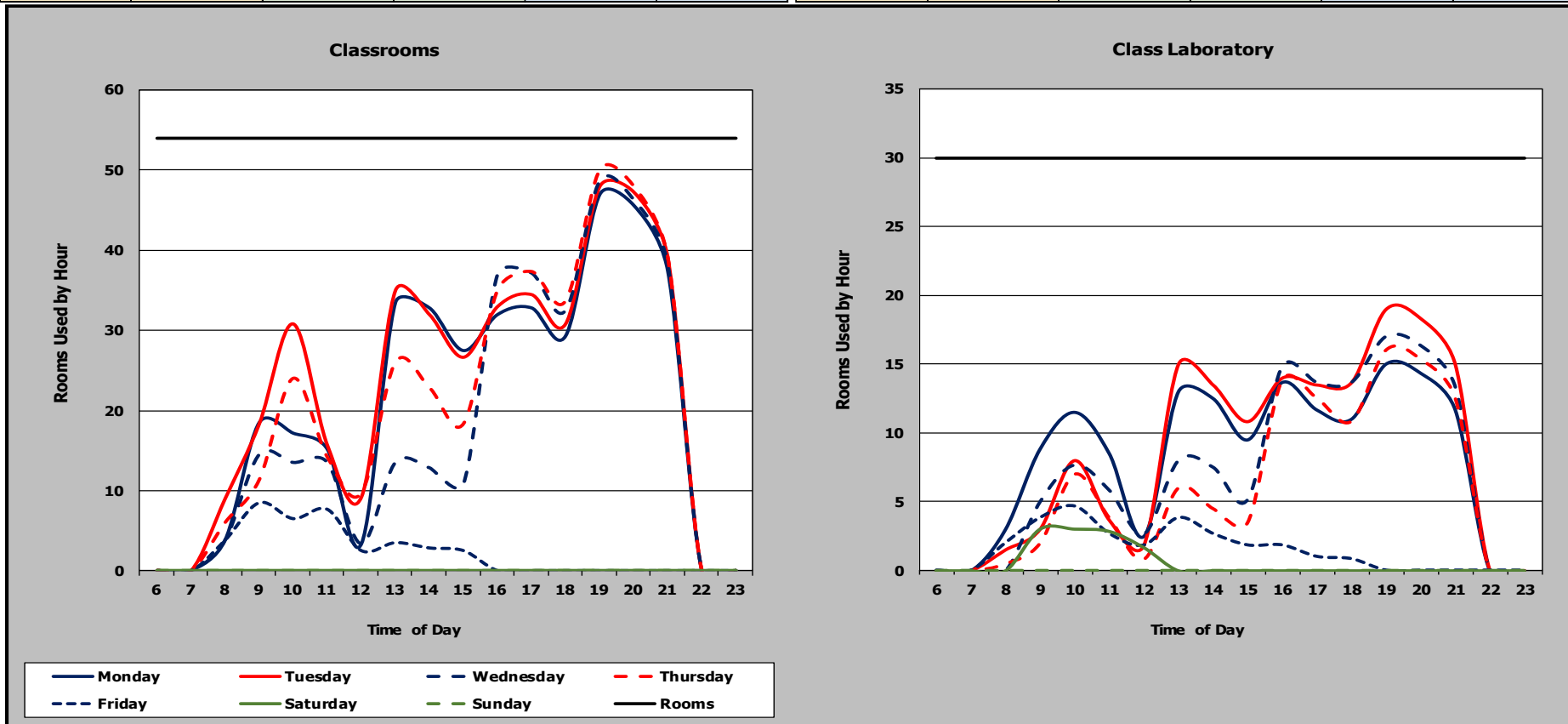


# Commuter Campus

Overall: 150

Classroom				Score: 75	
Demand		Utilization		Average Percent Fill	
Hours per Week	Weighted Score	Hours per Week	Weighted Score	Percent	Weighted Score
41	27	34	24	60%	24

Class Laboratory				Score: 75	
Demand		Utilization		Average Percent Fill	
Hours per Week	Weighted Score	Hours per Week	Weighted Score	Percent	Weighted Score
31	27	23	24	65%	24

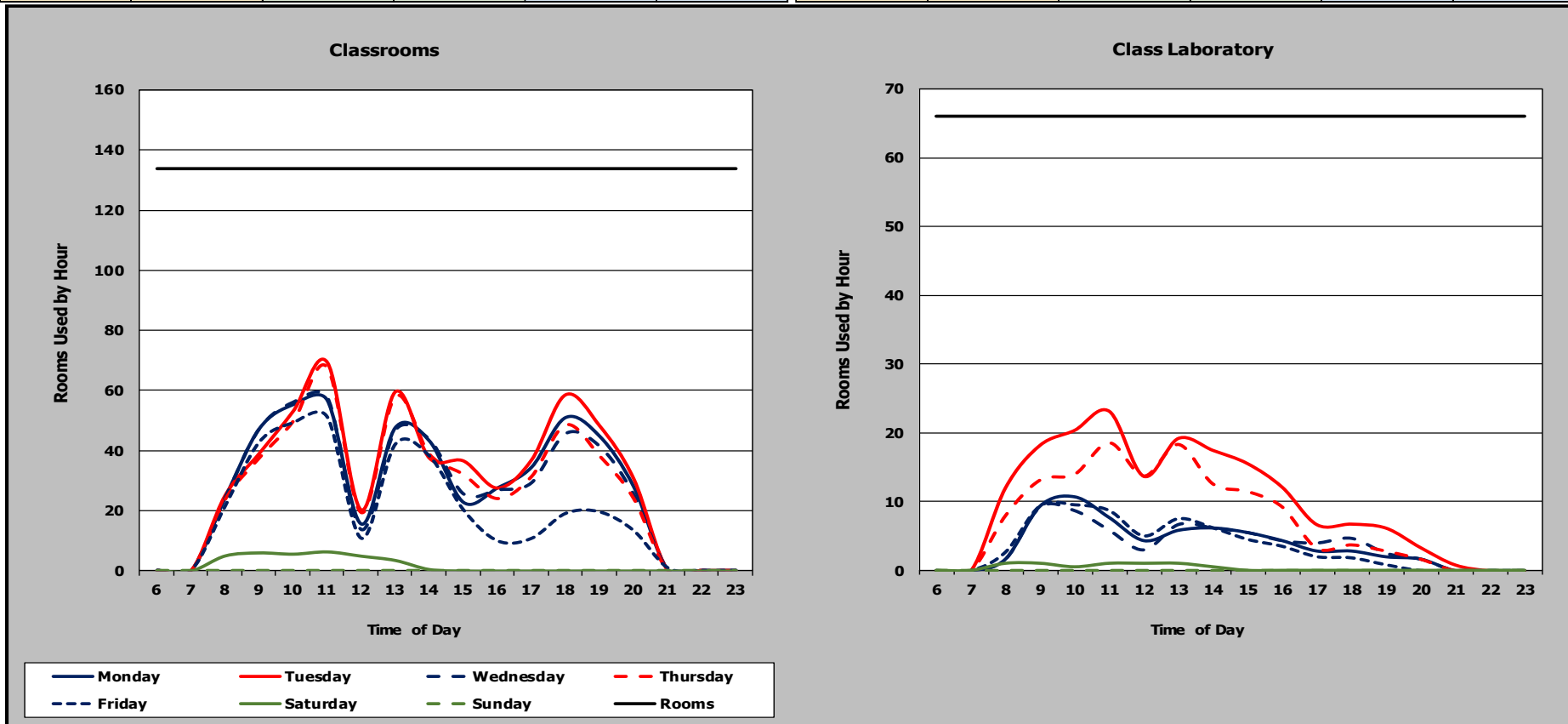


# Room for Improvement...

Overall: **98**

Classroom				Score: <b>49</b>	
Demand		Utilization		Average Percent Fill	
Hours per Week	Weighted Score	Hours per Week	Weighted Score	Percent	Weighted Score
22	9	21	8	66%	32

Class Laboratory				Score: <b>49</b>	
Demand		Utilization		Average Percent Fill	
Hours per Week	Weighted Score	Hours per Week	Weighted Score	Percent	Weighted Score
16	9	9	8	90%	32



# Great Tool for the Institutions

- Room-Level Breakouts
- Courses Scheduled
- Step by Step calculations
- Fosters collaboration – best practices

Texas Higher Education Coordinating Board													
Space Usage Efficiency Detail Report - Fall 2011													
UT-Arlington													
Building - Room													
SUE Score	Demand Score	Utilization Score	POF Score	Average Demand Hours	Overlap Hours	Average Utilization Hours	Average Percent Fill	Capacity	Students	Duration Minutes	Subject Number Section		Day - Time
000608 - 0000000000000166   Class Laboratory													
67	27	32	8	34.4	7.0	27.4	54	18	98	1,720	10	Class Count	
				32	3.4	0.0	3.4	83	18	15	170	ART 3385 80507	Monday - 0800
				32	3.4	0.0	3.4	94	18	17	170	ART 4367 80533	Tuesday - 1100
				24	3.4	0.0	3.4	67	18	12	170	ART 4397 80544	Tuesday - 1400
				32	3.4	0.0	3.4	83	18	15	170	ART 3385 80507	Wednesday - 0800
				16	14.0	7.0	7.0	56	18	10			Wednesday - 1400
					7.0	0.0	7.0			8	350	ART 4392 80539	
					7.0	7.0	0.0			2	350	ART 5355 80553	
				32	3.4	0.0	3.4	94	18	17	170	ART 4367 80533	Thursday - 1100
				24	3.4	0.0	3.4	67	18	12	170	ART 4397 80544	Thursday - 1400



Texas Higher Education  
Coordinating Board