

Higher Education Strategic Plan, Accountability System, and Other Data Resources



Texas Higher Education
Coordinating Board

David W. Gardner, PhD

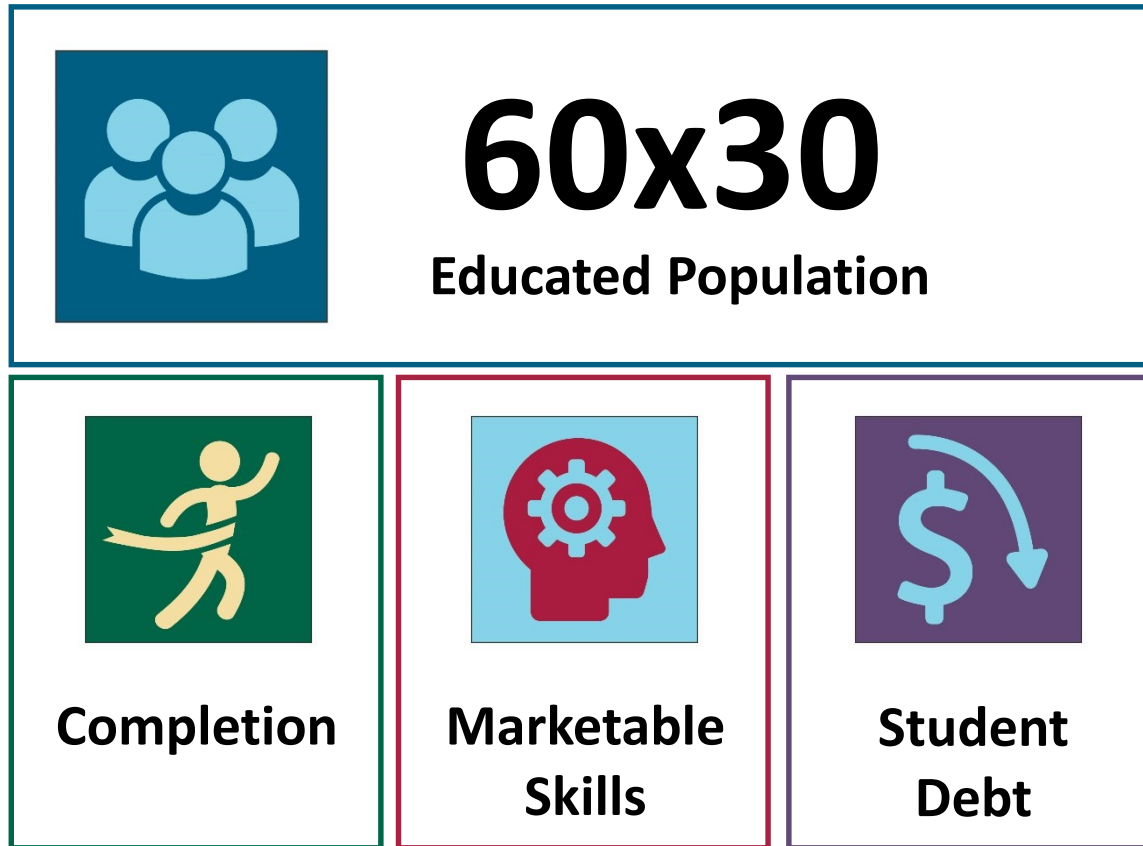
Deputy Commissioner, Academic Planning and Policy

Julie Eklund, PhD

Assistant Commissioner, Strategic Planning and Funding

November 29, 2018

60x30TX is a Student-Centered Plan



The plan was developed with some key characteristics in mind

- A few, measurable goals
- Measurable targets that support the goals and highlight critical areas of focus
- Allows institutions and regions to be creative and independent in their efforts
- Designed to be dynamic, with periodic reviews, so needed adjustments can be made if circumstances change

The Four 60x30TX Goals



THE OVERARCHING GOAL: 60x30: EDUCATED POPULATION

At least 60 percent of Texans ages 25-34 will have a certificate or degree.

- *Supports the economic future of the state*



THE SECOND GOAL: COMPLETION

At least 550,000 students in 2030 will complete a certificate, associate, bachelor's, or master's from an institution of higher education in Texas.

- *Requires large increases among targeted groups*



THE THIRD GOAL: MARKETABLE SKILLS

All graduates from Texas public institutions of higher education will have completed programs with identified marketable skills.

- *Emphasizes the value of higher education in the workforce*



THE FOURTH GOAL: STUDENT DEBT

Undergraduate student loan debt will not exceed 60 percent of first-year wages for graduates of Texas public institutions.

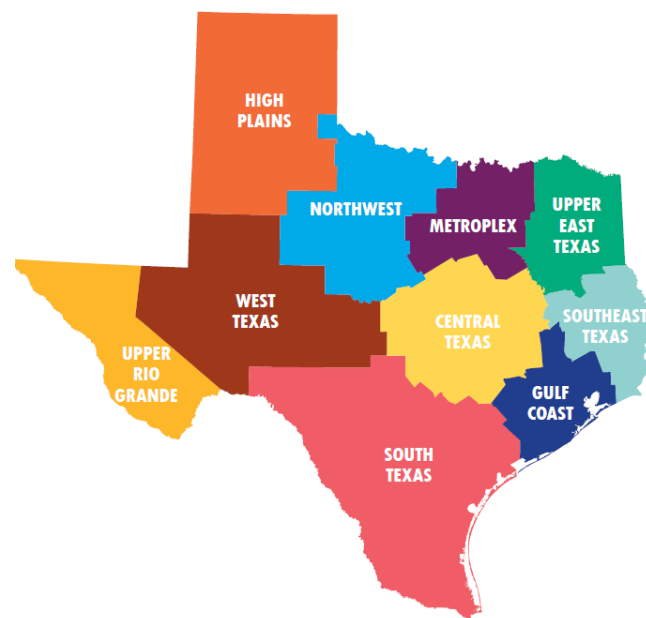
- *Helps students graduate with manageable debt*

Texas made steady progress toward each of the four goals of 60x30TX this year

Goal	Target	2016	2017	One-Year Improvement (pc = point change)	Annual % Increase Needed	2020 Benchmark	2030 Goal/ Target
60x30	60x30 (Educated Population)	41.0%	42.3%	1.3% pc	1.3%	48%	60%
Completion	Overall	321,410	333,920	3.9%	3.9%	376,000	550,000
	Hispanic	103,889	111,344	7.2%	7.5%	138,000	285,000
	African American	38,813	41,027	5.7%	4.5%	48,000	76,000
	Male	135,849	141,564	4.2%	5.2%	168,000	275,000
	Economically Disadvantaged	119,490	124,178	3.9%	5.3%	146,000	246,000
	TX High School Graduates Enrolling in TX Higher Education	51.9%	52.3%	0.4 pc	.7%	58%	65%
Marketable Skills	Working or Enrolled Within One Year	78.8%	78.4%	-0.40% pc	--	80%	80%
Student Debt	Student Loan Debt to First Year Wage Percentage	60%	59%	-1% pc	--	60%	60%
	Excess SCH Attempted*	19	18	-1 SCH	--	12	3
	Percent of Undergraduates Completing with Debt	48.2%	47.2%	-1% pc	--	50%	50%

The agency supports the strategic use of data to inform institution- and state-level policy and practice

- 60x30TX.com and revised accountability system
- Texas Higher Education Accountability System
- Almanac
- Data Fellows program
- Regional *60x30TX* Targets



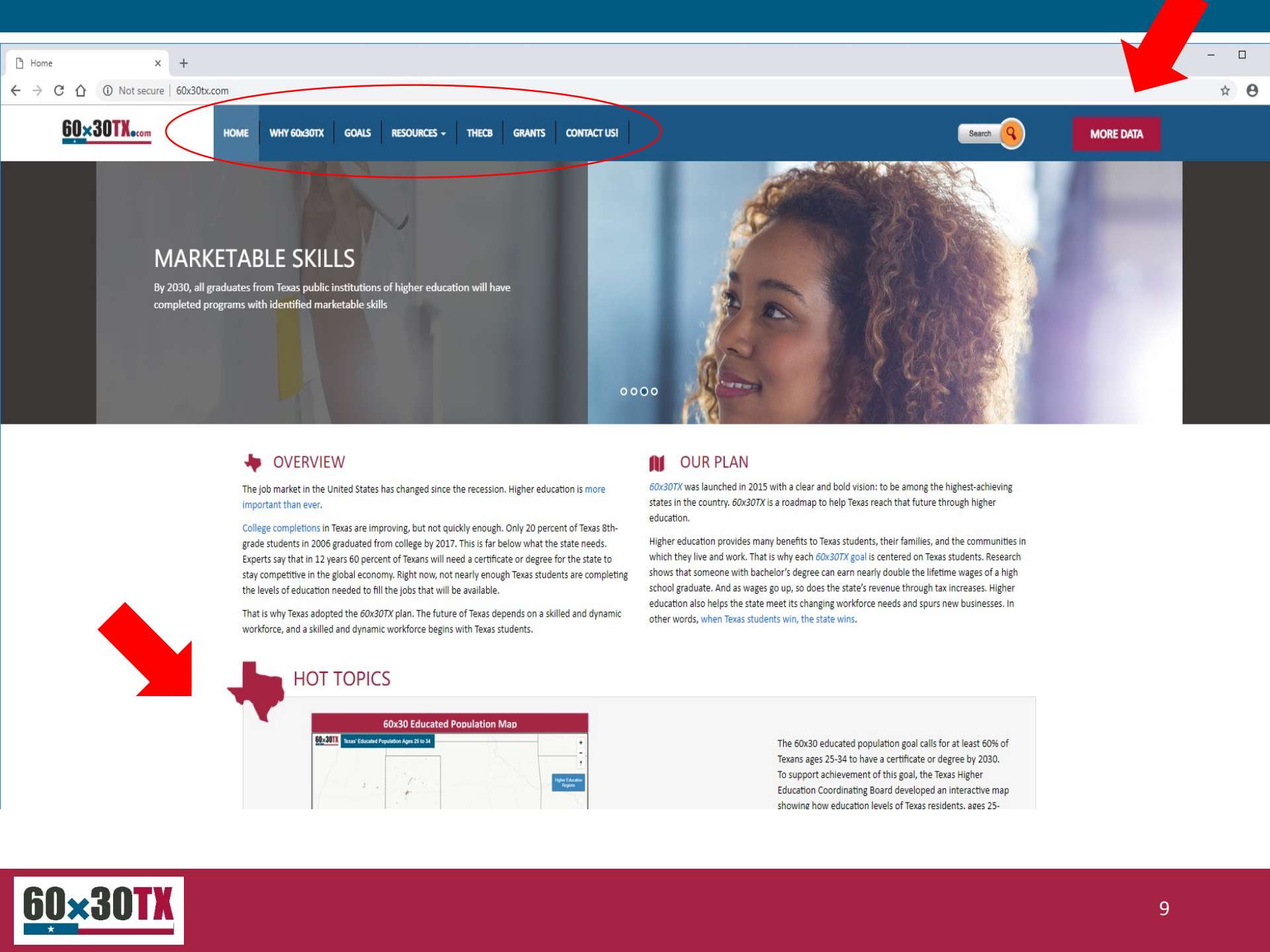
If I want to use 60x30TX data and other resources to inform decision-making, where should I start?

- 60x30TX.com
www.60x30tx.com; www.60x30tx.org; www.60x30tx.net
- Texas Higher Education Accountability System
<http://www.txhigheredaccountability.org>
- Texas Higher Education Almanac
www.thecb.state.tx.us/almanac
- Texas Higher Education Data website
www.txhighereddata.org

60x30TX.com is a powerful hub for reaching a variety of audiences

Consumer-friendly site that provides “snapshot” data

- Hot topics
- Infographics
- Interactive statewide, regional and institutional data
- Resources, media announcements, events
- Videos
- Ability to do “deeper dives” into accountability system



MARKETABLE SKILLS

By 2030, all graduates from Texas public institutions of higher education will have completed programs with identified marketable skills

OVERVIEW

The job market in the United States has changed since the recession. Higher education is [more important than ever](#).

[College completions](#) in Texas are improving, but not quickly enough. Only 20 percent of Texas 8th-grade students in 2006 graduated from college by 2017. This is far below what the state needs. Experts say that in 12 years 60 percent of Texans will need a certificate or degree for the state to stay competitive in the global economy. Right now, not nearly enough Texas students are completing the levels of education needed to fill the jobs that will be available.

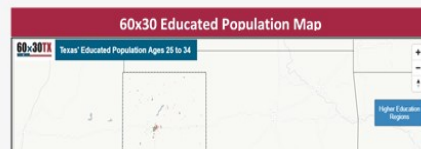
That is why Texas adopted the 60x30TX plan. The future of Texas depends on a skilled and dynamic workforce, and a skilled and dynamic workforce begins with Texas students.

OUR PLAN

[60x30TX](#) was launched in 2015 with a clear and bold vision: to be among the highest-achieving states in the country. [60x30TX](#) is a roadmap to help Texas reach that future through higher education.

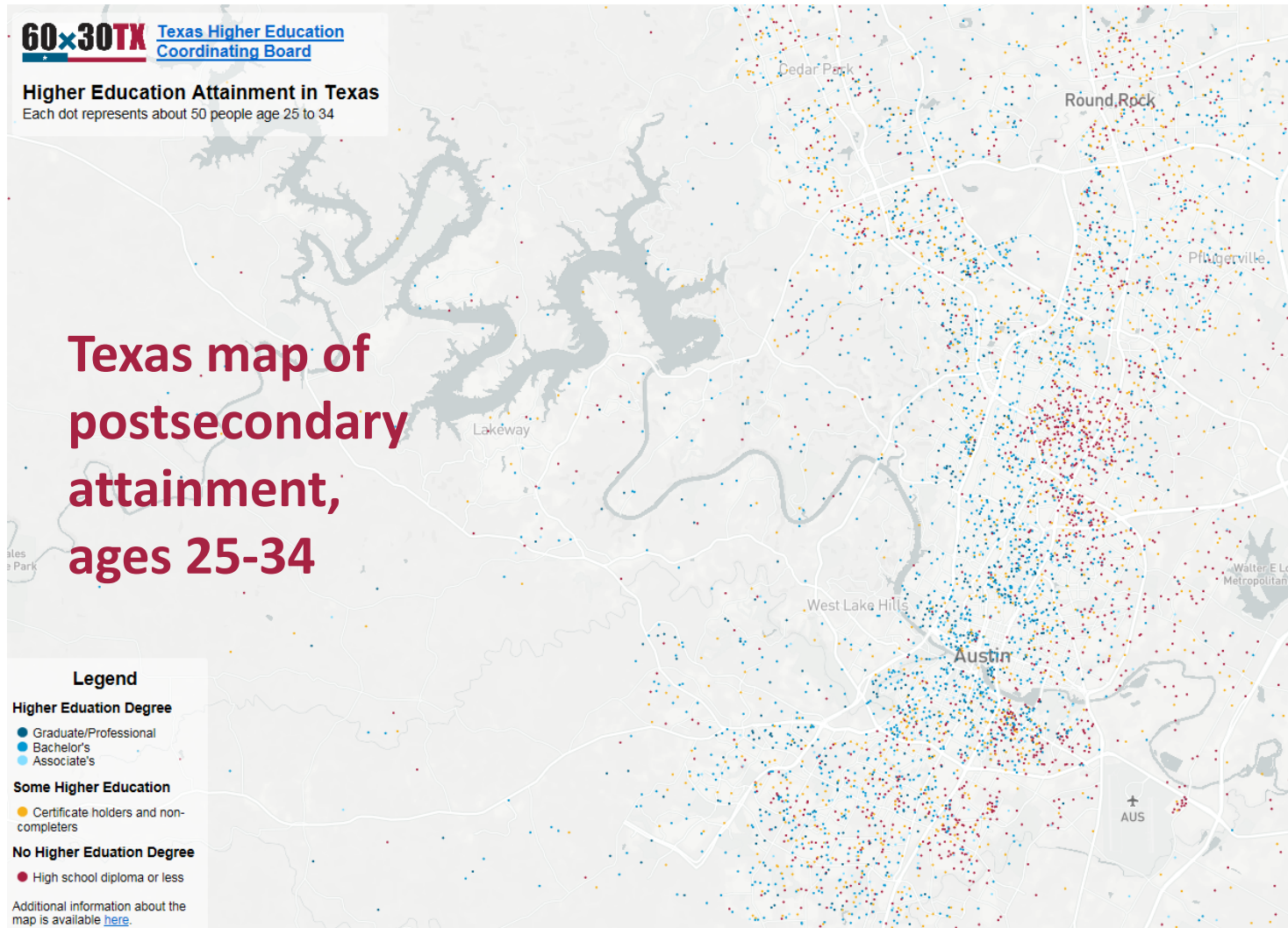
Higher education provides many benefits to Texas students, their families, and the communities in which they live and work. That is why each [60x30TX goal](#) is centered on Texas students. Research shows that someone with bachelor's degree can earn nearly double the lifetime wages of a high school graduate. And as wages go up, so does the state's revenue through tax increases. Higher education also helps the state meet its changing workforce needs and spurs new businesses. In other words, [when Texas students win, the state wins](#).

HOT TOPICS



The 60x30 educated population goal calls for at least 60% of Texans ages 25-34 to have a certificate or degree by 2030. To support achievement of this goal, the Texas Higher Education Coordinating Board developed an interactive map showing how education levels of Texas residents, ages 25-

Sneak peak at a Hot Topic!



Regional data support 60x30TX efforts

Regional Target Starter Kit

60x30TX.com

HOME | WHY 60x30TX | GOALS | RESOURCES | THECB | GRANTS | CONTACT US

Search

MORE DATA

60x30: EDUCATED POPULATION

By 2030, at least 60 percent of Texans ages 25-34 will have a certificate or degree

Home > Resources > Regional Target Starter Kit

Regional Target Starter Kit

Region 1 - High Plains

10.26.17

This resource is designed to serve as a guide for you to learn about 60x30TX regional targets, engage stakeholders in the High Plains region, and collaboratively develop strategies to achieve regional targets.

Download parts of regional starter kit:

- PART 1: Introduction and Action-Steps for Regional Targets
- PART 2: Sample Regional Strategies
- PART 3: Regional Context Data Workbook (excel file)
- PART 4: Suggested Participant Contact List (excel file)
- WEBINAR RECORDING:Region1

Coordinating Board contact for the High Plains region: **Josie Brunner**.

Download Complete Kit (pdf file)

Region 2 - Northwest

10.26.17

This resource is designed to serve as a guide for you to learn about 60x30TX regional targets, engage stakeholders in the Northwest region, and collaboratively develop strategies to achieve regional targets.

Download parts of regional starter kit:

- PART 1: Introduction and Action-Steps for Regional Targets
- PART 2: Sample Regional Strategies
- PART 3: Regional Context Data Workbook (excel file)
- PART 4: Suggested Participant Contact List (excel file)
- WEBINAR RECORDING:Region2

Coordinating Board contact for the Northwest region: **Dr. Mary Smith**.

Download Complete Kit (pdf file)

Region 3 - Metroplex

10.26.17

Region 4 - Upper East Texas

10.26.17

The state higher education accountability system has several interrelated purposes

- Evaluate and compare institutional data to improve student and institutional outcomes
- Highlight state priorities for institutions and other users
- Hold institutions accountable to taxpayers, parents, and students

How Does THECB Use Accountability Data?

- New program reviews and requests
- Online institutional resumes
- Texas Higher Education Almanac/Compare College TX
- Community college Success Points
- Institutional comparisons
- Regional planning

There are several Accountability Peer Groups

- **Universities (5 Groups)**

 - Research (2)

 - Emerging Research (8)

 - Doctoral (7)

 - Comprehensive (6)

 - Masters (14)

- **Health-Related Institutions (10), plus data for university medical schools (2)**

- **Texas State Technical Colleges and Lamar Institutions (9)**

- **Community Colleges (4 Groups)**

 - Very Large (10)

 - Large (9)

 - Medium (22)

 - Small (9)

In 2016 the accountability system was redesigned to align with *60x30TX* goals and targets

- Updated look and feel
- Expanded functionality and responsive design
- Focused on plan metrics with contextual measures to inform efforts and compare progress
- Reduced number of measures for maximum impact
- Increased ability for deep data dives via interactive portal

Accountability System

THECB Accountability System

Not secure | www.txhigheredaccountability.org/acctpublic/


60x30TX Texas Higher Education Accountability System

Home Resources THECB 60x30TX.com Interactive

STATEWIDE

- PUBLIC UNIVERSITIES
- PUBLIC TWO-YEAR COLLEGES
- PUBLIC HEALTH-RELATED INSTITUTIONS
- NON-TEXAS & CAREER INSTITUTIONS


Create Complete Report (PDF)




Need Help?

Under Resources above, see our [Quick Start Guide](#) if you're new, [Interactive Guide](#) to download data, and [News and Updates](#) for the latest important information.


Select a 60x30TX goal below to see related measures for **Statewide**:

 **60x30: Educated Population**


By 2030, at least 60 percent of Texans ages 25-34 will have a certificate or degree.

 **Completion**

By 2030, at least 550,000 students in that year will complete a certificate, associate, bachelor's, or master's from an institution of higher education in Texas.

 **Marketable Skills**

By 2030, all graduates from Texas public institutions of higher education will have completed programs with identified marketable skills.

 **Student Debt**

By 2030, undergraduate student loan debt will not exceed 60 percent of first-year wages for graduates of Texas public institutions.

Sector-Specific/Other

© 2018 - TEXAS HIGHER EDUCATION COORDINATING BOARD

Version: 1.1.16.1030

Accountability System

 Texas Higher Education
Accountability System 

Select a 60x30TX goal below to see related measures for **Statewide**:

 [60x30: Educated Population](#)

By 2030, at least 60 percent of Texans ages 25-34 will have a certificate or degree.

 [Completion](#)

By 2030, at least 550,000 students in that year will complete a certificate, associate, bachelor's, or master's from an institution of higher education in Texas.

 [Marketable Skills](#)

By 2030, all graduates from Texas public institutions of higher education will have completed programs with identified marketable skills.

© 2017 - TEXAS HIGHER EDUCATION
COORDINATING BOARD

Filters provide an easy way to disaggregate data by groups

The screenshot displays the Texas Higher Education Accountability System (60x30TX) website. The main navigation bar includes links for Home, Resources, THECB, 60x30TX.com, and Interactive. The current page is titled 'C01UH - Degrees and Certificates Awarded'. Below this, a table titled 'Degrees and Certificates Awarded' shows data for public 4-year institutions. The table includes columns for 2014, 2015, 2016, and Percent Change. The data is disaggregated by race and gender, with filters for 'All', 'Male', 'Female', 'White', 'African Am...', 'Hispanic', 'Asian', 'Internatio...', and 'Other'. The table shows that the total number of degrees and certificates awarded increased by 3.9% from 2014 to 2016. The data is as follows:

	2014	2015	2016	Percent Change
	Count	Count	Count	
Total	9,238	9,160	9,596	3.9 %
Certificate				
Associate				
Baccalaureate	6,437	6,340	6,822	6.0 %
Masters	2,075	2,060	1,967	-5.2 %
Doctoral Research Scholarship	272	335	366	34.6 %
Doctoral Professional Practice	454	425	441	-2.9 %

© 2017 - TEXAS HIGHER EDUCATION COORDINATING BOARD

Institutions may add contextual comments to any measure

40HC - Enrollment

Fall Headcount

Fall headcount including dual credit students and not including fall flex students. Percent change is from first to last year displayed.

	2015	2016	2017		
	Count	Count	Count	Percent Change	
Female	7,156	7,016	364	-94.9 %	
Total	11,477	11,348	560	-95.1 %	
White	4,972	4,513	243	-95.1 %	
African American	1,704	1,715	77	-95.5 %	
Hispanic	3,610	4,001	178	-95.1 %	
Asian	441	391	23	-94.8 %	
International	153	193	6	-96.1 %	
Other	597	535	33	-94.5 %	

Comment: Lone Star College - Kingwood was impacted by Hurricane Harvey in 2017. As a result, the campus experienced a decrease in headcount.

Blue Selected White Unselected

STATEWIDE

PUBLIC UNIVERSITIES

▶ PUBLIC TWO-YEAR COLLEGES

PUBLIC HEALTH-RELATED INSTITUTIONS

▶ NON-TEXAS & CAREER INSTITUTIONS

Create Complete Report (PDF)

Select a 60x30TX goal below to see related meas

60x30: Educated Population

By 2030, at least 60 percent of Texans ages
25-34 will have a certificate or degree.

Sector-Specific/Other

THECB-Public Univ....pdf ^

There are two ways for institutional leaders to download a PDF accountability report

- Select your sector
- Select any goal
- Select your institution
- Select “Create Complete Report (PDF)”
- The full report link will show up in the lower left-hand corner of the screen

Or go to Interactive and select Accountability Reports, then Institution Type, Year, and Institution

The screenshot shows a web browser window with two tabs: 'CBNet' and 'THECB Accountability System'. The address bar shows the URL 'www.txhigheredaccountability.org/AcctPublic/InteractiveReport/ManageReports'. The browser's address bar and tab area are circled in red. The website header features the '60x30TX' logo, the text 'Texas Higher Education Accountability System', and navigation links: 'Home', 'Resources', 'THECB', '60x30TX.com', and 'Interactive'. The 'Interactive' link is highlighted in a red box. Below the header, there are three blue buttons: 'Download Data', 'Predefined Reports', and 'Accountability Reports'. The 'Accountability Reports' button is circled in red. To the right of each button is a description: 'Download data from the Accountability database in Excel or PDF format' for 'Download Data'; 'Frequently requested reports on topics such as Fall Headcount, Graduation Rates, Degree and Certificates Awarded, and others' for 'Predefined Reports'; and 'Reports showing all Accountability measures by institution, sector, peer group or statewide' for 'Accountability Reports'.

Download Data

Download data from the Accountability database in Excel or PDF format

Predefined Reports

Frequently requested reports on topics such as Fall Headcount, Graduation Rates, Degree and Certificates Awarded, and others

Accountability Reports

Reports showing all Accountability measures by institution, sector, peer group or statewide

The interactive portal also provides a predefined reports section and data download option


Degrees and Certificates Awarded by Curriculum Area - University of Houston			
DimYear	LevelGroupDesc	CIPG CIPDesc	Count
2016	Doctoral Professional P	22 - 22010100 - Law	240
2016	Doctoral Professional P	51 - 51170100 - Optometry	101
2016	Doctoral Professional P	51 - 51200100 - Pharmacy	100
2016	Master's	04 - 04020100 - Architecture	29
2016	Master's	09 - 09010200 - Mass Communication/Media Studies	7
2016	Master's	09 - 09090200 - Public Relations/Image Management	11
2016	Master's	09 - 09090500 - Health Communication	1
2016	Master's	11 - 11010100 - Computer and Information Sciences, General	37
2016	Master's	11 - 11100300 - Computer and Information Systems Security/Information A	27
2016	Master's	13 - 13030100 - Curriculum and Instruction	57
2016	Master's	13 - 13040100 - Educational Leadership and Administration, General	68
2016	Master's	13 - 13040600 - Higher Education/Higher Education Administration	17
2016	Master's	13 - 13100100 - Special Education and Teaching, General	4
2016	Master's	13 - 13110100 - Counselor Education/School Counseling and Guidance Servi	35
2016	Master's	13 - 13130700 - Health Teacher Education	3
2016	Master's	13 - 13131400 - Physical Education Teaching and Coaching	6
2016	Master's	13 - 13132700 - Health Occupations Teacher Education	1
2016	Master's	14 - 14020100 - Aerospace, Aeronautical and Astronautical/Space Engineeri	4
2016	Master's	14 - 14050100 - Bioengineering and Biomedical Engineering	5
2016	Master's	14 - 14070100 - Chemical Engineering	17

TxHigherEdData.org is a great place to find links to accountability and additional resources

Information on

- Transfer student success
- High school to college data, including dual credit outcomes
- Wages by program(TX CREWS)
- Higher education finance and research
- Data insight briefs (“two-pagers”)


www.txhighereddata.com will soon have new look


Texas Higher Education Data

[Overview](#)
[Higher Education](#)
[High School to College](#)
[Workforce](#)
[Reporting](#)
[Resources](#)


TXHigherEdData.org

The Texas Higher Education Data (THED) website is Texas' primary source for statistics on higher education. You are currently viewing a preview of the THED redesigned website. [Return to THED Home \(Classic View\).](#)




Texas Higher Education Accountability System

The Accountability System provides detailed data on the state of higher education in Texas and tracks performance on critical measures. It is organized around the goals and targets of 60x30TX.

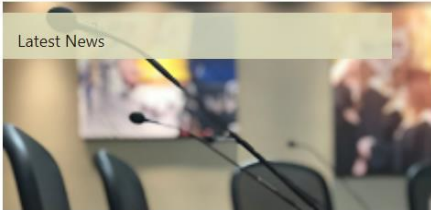


A website dedicated to the 60x30TX *Texas Higher Education Strategic Plan for 2015-2030*. It includes information about the plan and its goals, including insight on the importance of and reasoning behind the plan.



2018 TEXAS PUBLIC HIGHER EDUCATION ALMANAC

A profile of state and institutional performance and characteristics for Texas public postsecondary institutions.

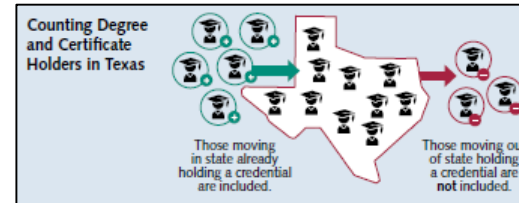
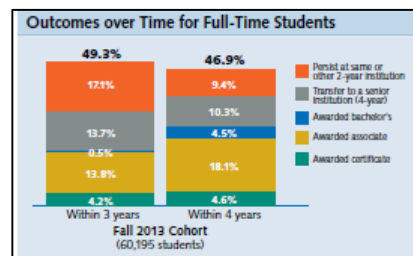
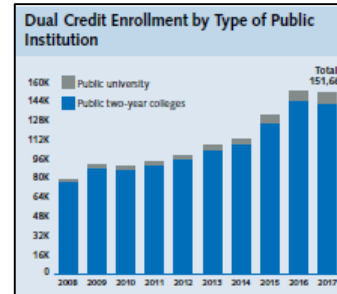
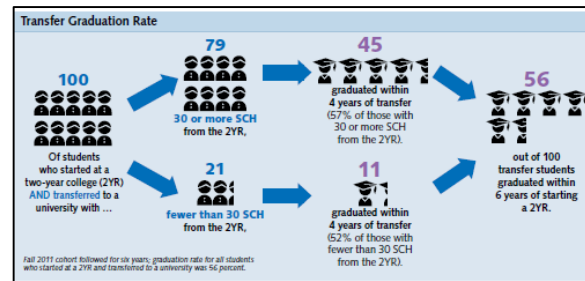
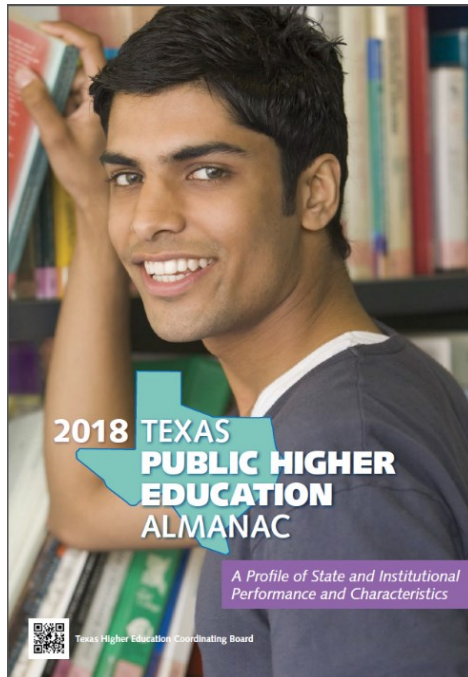


Latest News

- [10/02/2018 - 2016-2017 Exit Cohort Reports](#)
- [08/30/2018 - 2016-2017 ASALFS Students Pursuing Additional Education](#)
- [08/30/2018 - 2016-2017 Automated Student and Adult Learner Follow-Up System Results](#)
- [08/16/2018 - 2016-2017 Student Migration Report](#)
- [08/14/2018 - 2018 60x30TX Progress Report](#)
- [Subscribe to e-UPDATES](#)

And if websites aren't your preference, remember the...

Almanac!



THECB has a multi-faceted approach to data dissemination

- Integration of Websites
- Data Trainer on Staff



← Data Fellows Program

Participants dive into THECB data through Data Fellows program

- Training for stakeholders to understand and leverage data resources to support 60x30TX
 - www.60x30TX.com
 - Accountability system
 - Deeper THECB data analyses
 - Student, parent, and counselor-facing tools



Training promotes hands-on exploration and discussion



Data Walk



Hands-on exploration
of data resources



Small and large group
discussion of plan
strategies



Support for
dissemination



Data Fellows serve as ambassadors to 60x30TX

- 2017

- K-12 district leaders
- Higher education association leaders, intermediaries, philanthropic partners
- CTCs November 16
- Universities November 17

- 2018

- Education Doctoral Candidates
- Education Service Centers
- Texas Workforce Commission & State business associations



Contact

Julie Eklund, Ph.D.

Assistant Commissioner

Strategic Planning and Funding

Texas Higher Education Coordinating Board

Julie.Eklund@theccb.state.tx.us