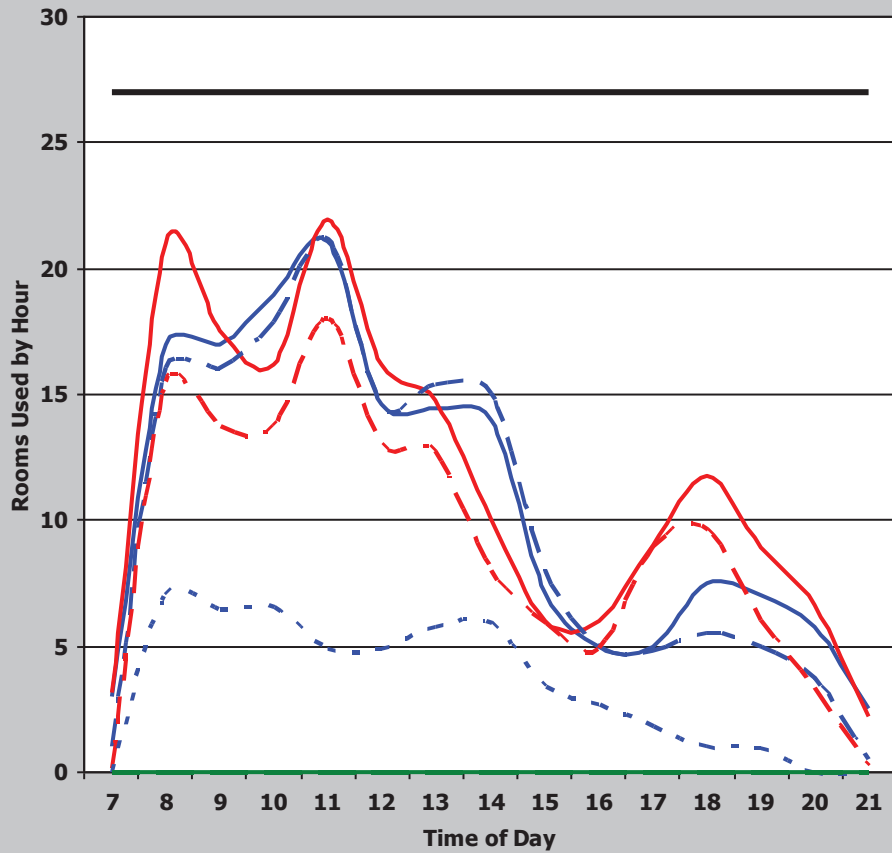


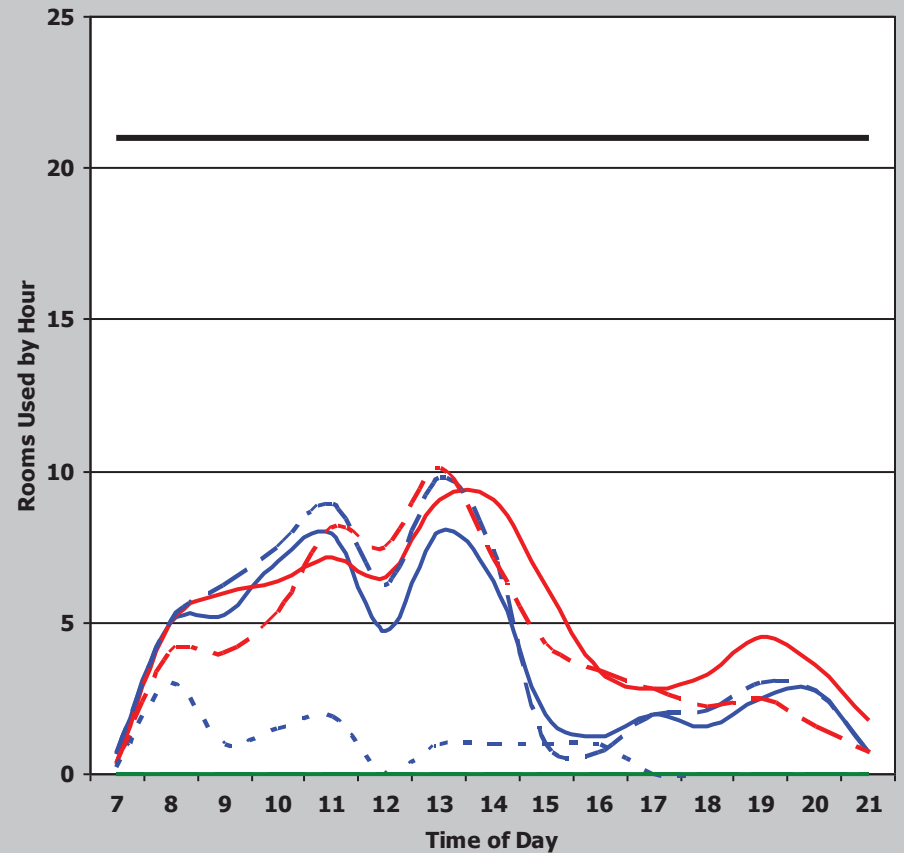
Texas Higher Education Coordinating Board - Space Usage Efficiency (SUE) - Fall 2018

Institution	Overall Score	Classroom Score	Class Lab Score	Classroom						Class Laboratory							
				Demand	Weighted Score	Utilization	Weighted Score	Average Percent Fill	Weighted Score	Demand	Weighted Score	Utilization	Weighted Score	Average Percent Fill	Weighted Score		
Lamar-Orange	92	59	33	40	27	30	16	53%	16	18	9	16	16	50%	8		
				Classroom Weighted Scoring						Class Laboratory Weighted Scoring							
Score (weight = 9)		Score (weight = 8)		Score (weight = 8)		Score (weight = 9)		Score (weight = 8)		Score (weight = 8)		Score (weight = 9)		Score (weight = 8)			
45 or >	36	38 or >	32	65% or >	32	35 or >	36	25 or >	32	75% or >	32	30 - 34.9	27	20 - 24.9	24	65 - 74.9	24
38 - 44.9	27	34 - 37.9	24	55 - 64.9	24	30 - 34.9	27	20 - 24.9	24	65 - 74.9	24	25 - 29.9	18	15 - 19.9	16	55 - 64.9	16
31 - 37.9	18	30 - 33.9	16	45 - 54.9	16	25 - 29.9	18	15 - 19.9	16	55 - 64.9	16	< 25	9	< 15	8	< 55%	8
< 31	9	< 30	8	< 45%	8	< 25	9	< 15	8	< 55%	8						

Classrooms



Class Laboratory



— Monday — Tuesday - - - Wednesday - - - Thursday
- - - Friday — Saturday - - - Sunday — Rooms