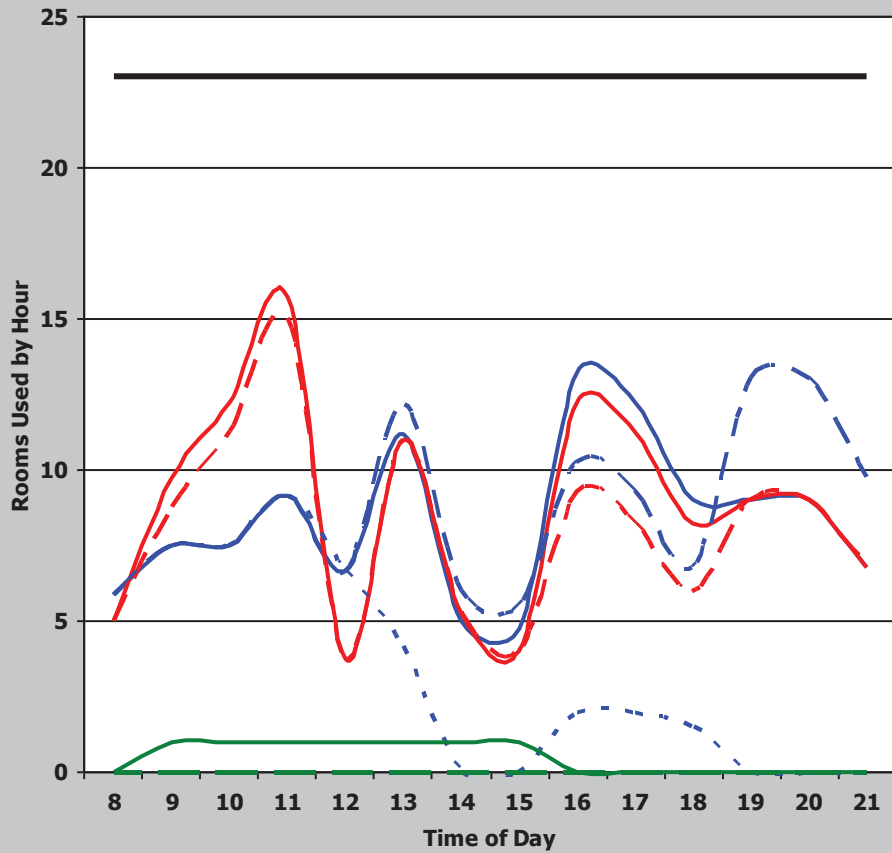


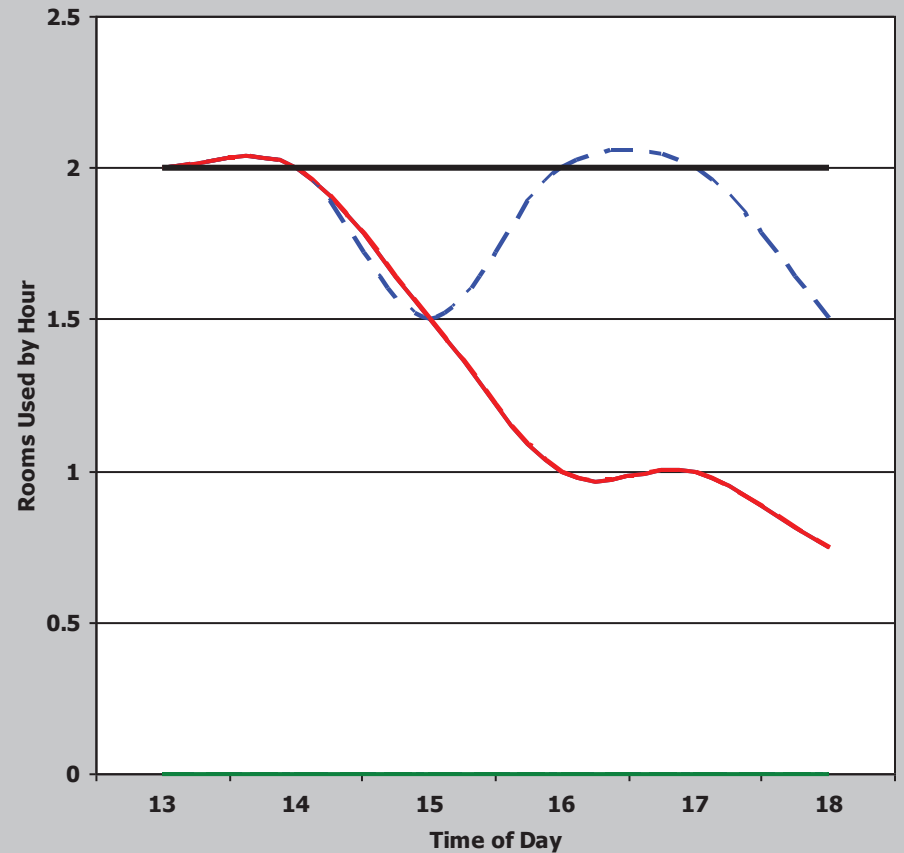
Texas Higher Education Coordinating Board - Space Usage Efficiency (SUE) - Fall 2018

Institution	Overall Score	Classroom Score	Class Lab Score	Classroom						Class Laboratory					
				Demand	Weighted Score	Utilization	Weighted Score	Average Percent Fill	Weighted Score	Demand	Weighted Score	Utilization	Weighted Score	Average Percent Fill	Weighted Score
UH-Victoria	143	51	92	42	27	28	8	54%	16	38	36	21	24	95%	32
				Classroom Weighted Scoring						Class Laboratory Weighted Scoring					
Score (weight = 9)		Score (weight = 8)		Score (weight = 8)		Score (weight = 9)		Score (weight = 8)		Score (weight = 8)		Score (weight = 9)		Score (weight = 8)	
45 or >		36		38 or >		32		65% or >		32		35 or >		36	
38 - 44.9		27		34 - 37.9		24		55 - 64.9		24		30 - 34.9		27	
31 - 37.9		18		30 - 33.9		16		45 - 54.9		16		25 - 29.9		18	
< 31		9		< 30		8		< 45%		8		< 25		9	

Classrooms



Class Laboratory



— Monday — Tuesday - - - Wednesday - - - Thursday
. . . Friday — Saturday - - - Sunday — Rooms