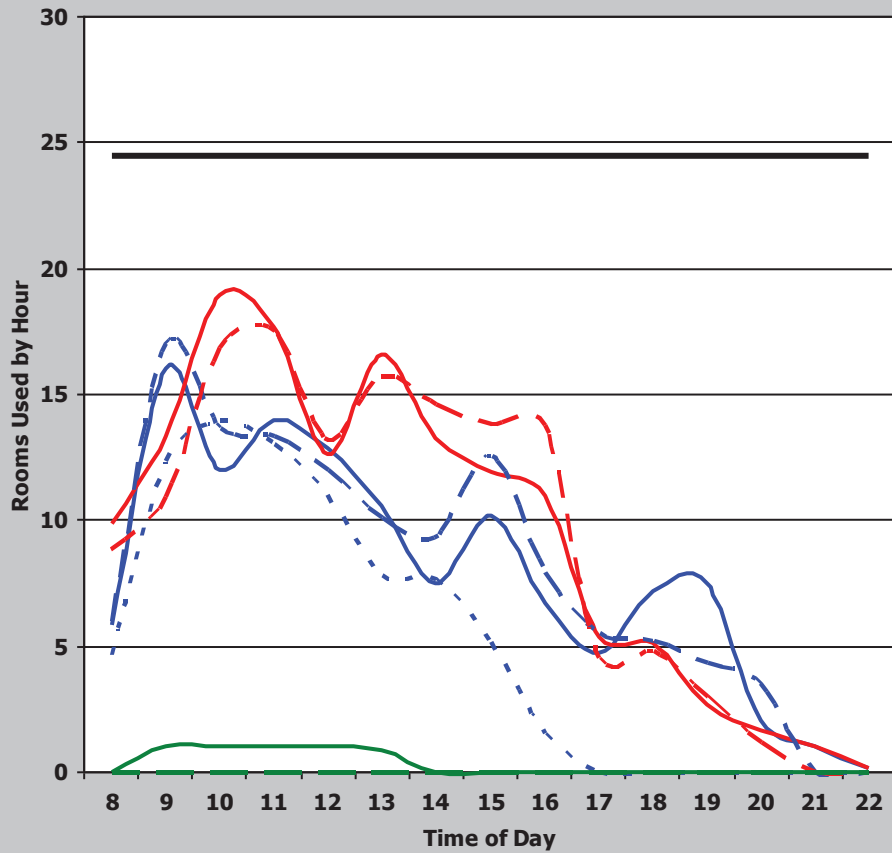


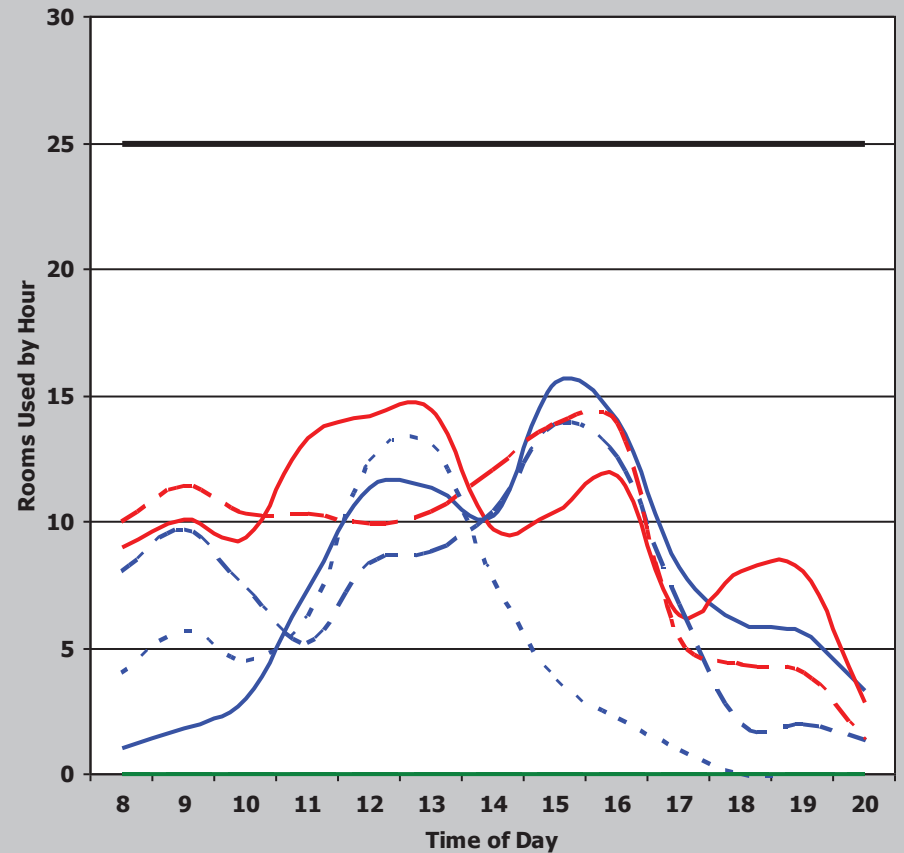
Texas Higher Education Coordinating Board - Space Usage Efficiency (SUE) - Fall 2018

Institution	Overall Score	Classroom Score	Class Lab Score	Classroom						Class Laboratory													
				Demand	Weighted Score	Utilization	Weighted Score	Average Percent Fill	Weighted Score	Demand	Weighted Score	Utilization	Weighted Score	Average Percent Fill	Weighted Score								
TAMU-Galveston	118	60	58	45	36	29	8	51%	16	29	18	24	24	63%	16								
				Classroom Weighted Scoring						Class Laboratory Weighted Scoring													
Score (weight = 9)		Score (weight = 8)		Score (weight = 8)		Score (weight = 8)		Score (weight = 9)		Score (weight = 8)		Score (weight = 8)											
45 or >		36		38 or >		32		65% or >		32		35 or >		36		25 or >		32		75% or >		32	
38 - 44.9		27		34 - 37.9		24		55 - 64.9		24		30 - 34.9		27		20 - 24.9		24		65 - 74.9		24	
31 - 37.9		18		30 - 33.9		16		45 - 54.9		16		25 - 29.9		18		15 - 19.9		16		55 - 64.9		16	
< 31		9		< 30		8		< 45%		8		< 25		9		< 15		8		< 55%		8	

Classrooms



Class Laboratory



— Monday — Tuesday - - - Wednesday - - - Thursday
- - - Friday — Saturday - - - Sunday — Rooms