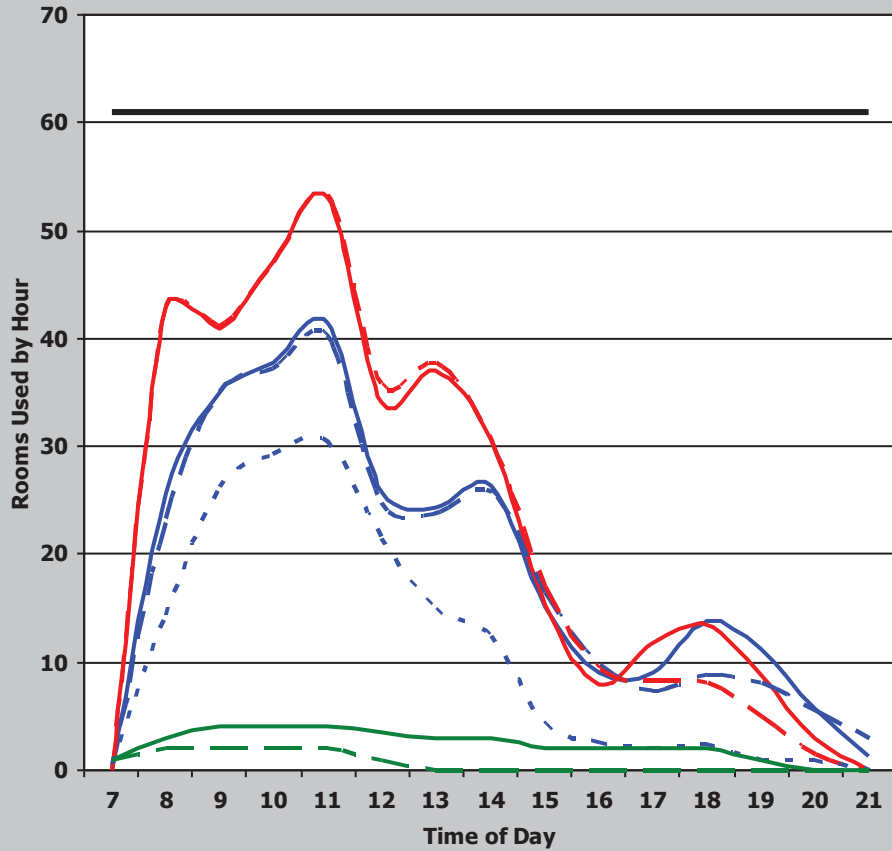


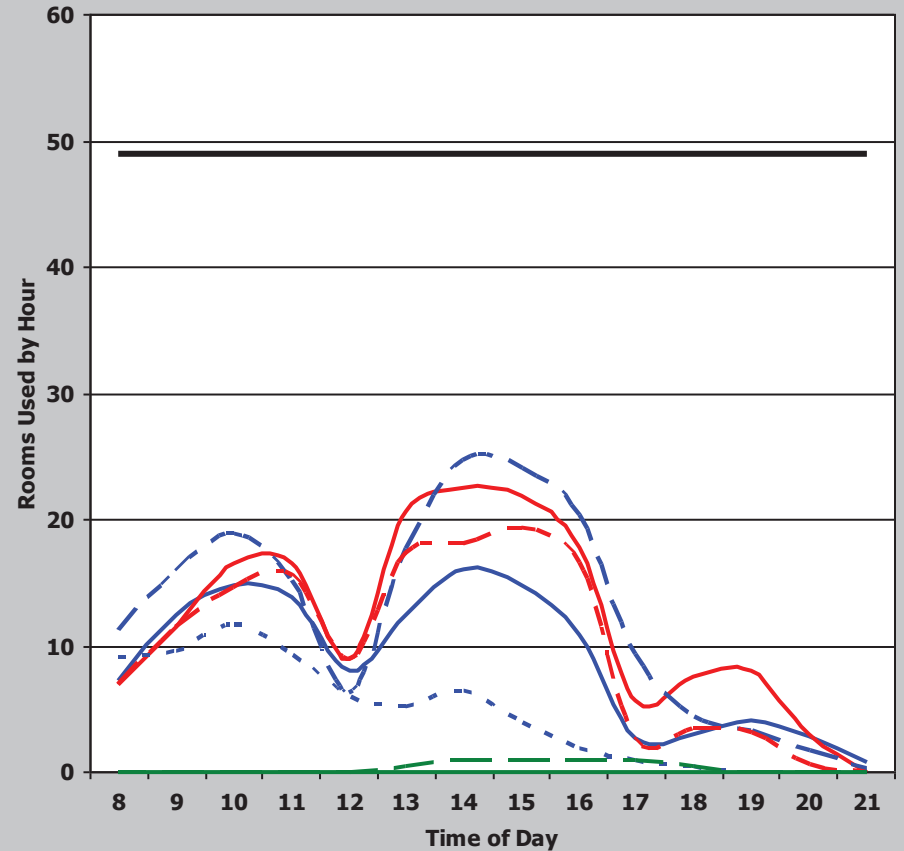
Texas Higher Education Coordinating Board - Space Usage Efficiency (SUE) - Fall 2018

Institution	Overall Score	Classroom Score	Class Lab Score	Classroom						Class Laboratory							
				Demand	Weighted Score	Utilization	Weighted Score	Average Percent Fill	Weighted Score	Demand	Weighted Score	Utilization	Weighted Score	Average Percent Fill	Weighted Score		
Midwestern	91	50	41	33	18	28	8	60%	24	23	9	16	16	63%	16		
				Classroom Weighted Scoring						Class Laboratory Weighted Scoring							
Score (weight = 9)		Score (weight = 8)		Score (weight = 8)		Score (weight = 9)		Score (weight = 8)		Score (weight = 8)		Score (weight = 9)		Score (weight = 8)			
45 or >	36	38 or >	32	65% or >	32	35 or >	36	25 or >	32	75% or >	32	30 - 34.9	27	20 - 24.9	24	65 - 74.9	24
38 - 44.9	27	34 - 37.9	24	55 - 64.9	24	25 - 29.9	18	15 - 19.9	16	55 - 64.9	16	25 - 29.9	18	15 - 19.9	16	55 - 64.9	16
31 - 37.9	18	30 - 33.9	16	45 - 54.9	16	< 25	9	< 15	8	< 55%	8	< 25	9	< 15	8	< 55%	8
< 31	9	< 30	8	< 45%	8												

Classrooms



Class Laboratory



— Monday — Tuesday - - - Wednesday - - - Thursday
- - - Friday — Saturday - - - Sunday — Rooms