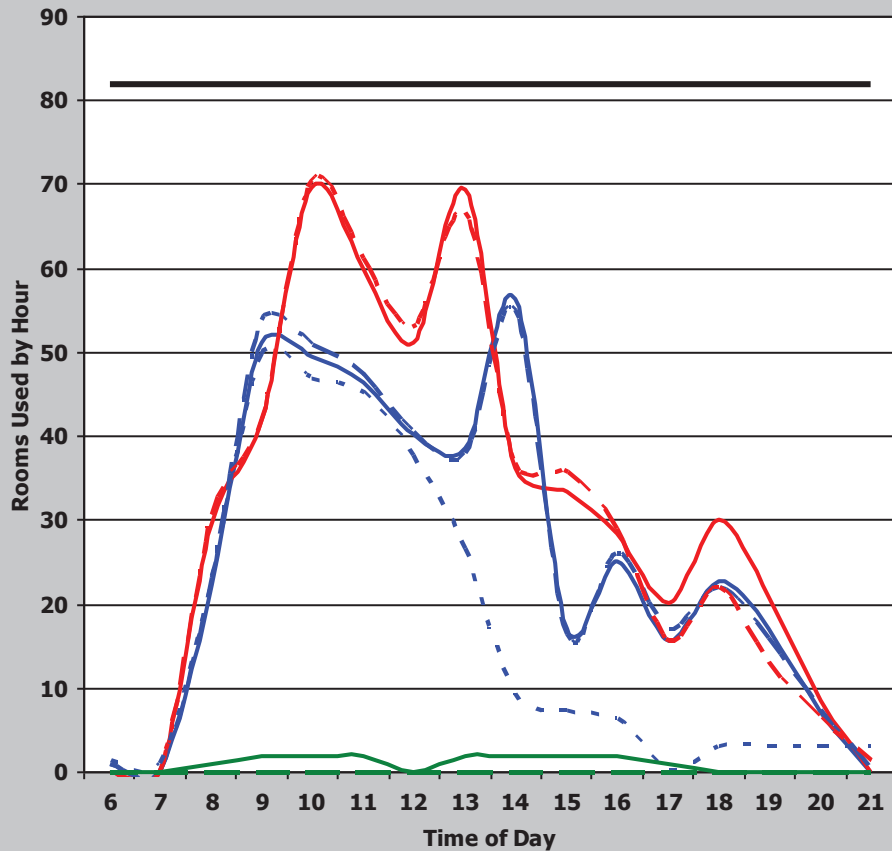


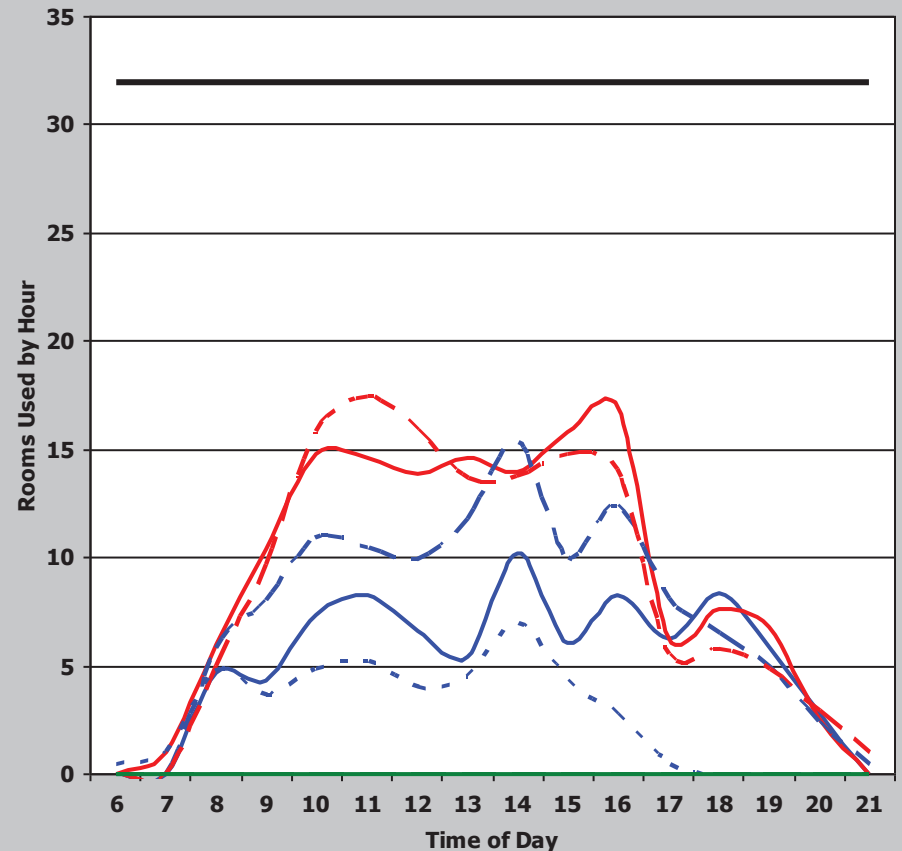
Texas Higher Education Coordinating Board - Space Usage Efficiency (SUE) - Fall 2018

Institution	Overall Score	Classroom Score	Class Lab Score	Classroom						Class Laboratory					
				Demand	Weighted Score	Utilization	Weighted Score	Average Percent Fill	Weighted Score	Demand	Weighted Score	Utilization	Weighted Score	Average Percent Fill	Weighted Score
Lamar	151	76	75	45	36	31	16	64%	24	34	27	20	24	65%	24
				Classroom Weighted Scoring						Class Laboratory Weighted Scoring					
				Score (weight = 9)		Score (weight = 8)		Score (weight = 8)		Score (weight = 9)		Score (weight = 8)		Score (weight = 8)	
				45 or >	36	38 or >	32	65% or >	32	35 or >	36	25 or >	32	75% or >	32
				38 - 44.9	27	34 - 37.9	24	55 - 64.9	24	30 - 34.9	27	20 - 24.9	24	65 - 74.9	24
				31 - 37.9	18	30 - 33.9	16	45 - 54.9	16	25 - 29.9	18	15 - 19.9	16	55 - 64.9	16
				< 31	9	< 30	8	< 45%	8	< 25	9	< 15	8	< 55%	8

Classrooms



Class Laboratory



— Monday — Tuesday - - - Wednesday - - - Thursday
. . . Friday — Saturday - - - Sunday — Rooms