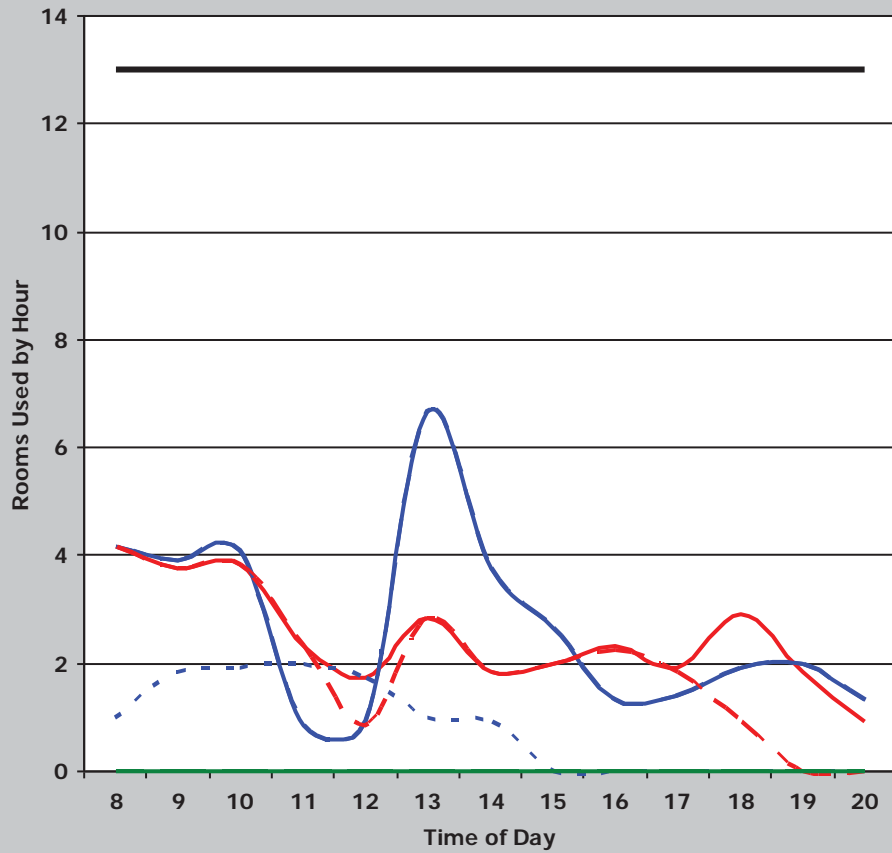
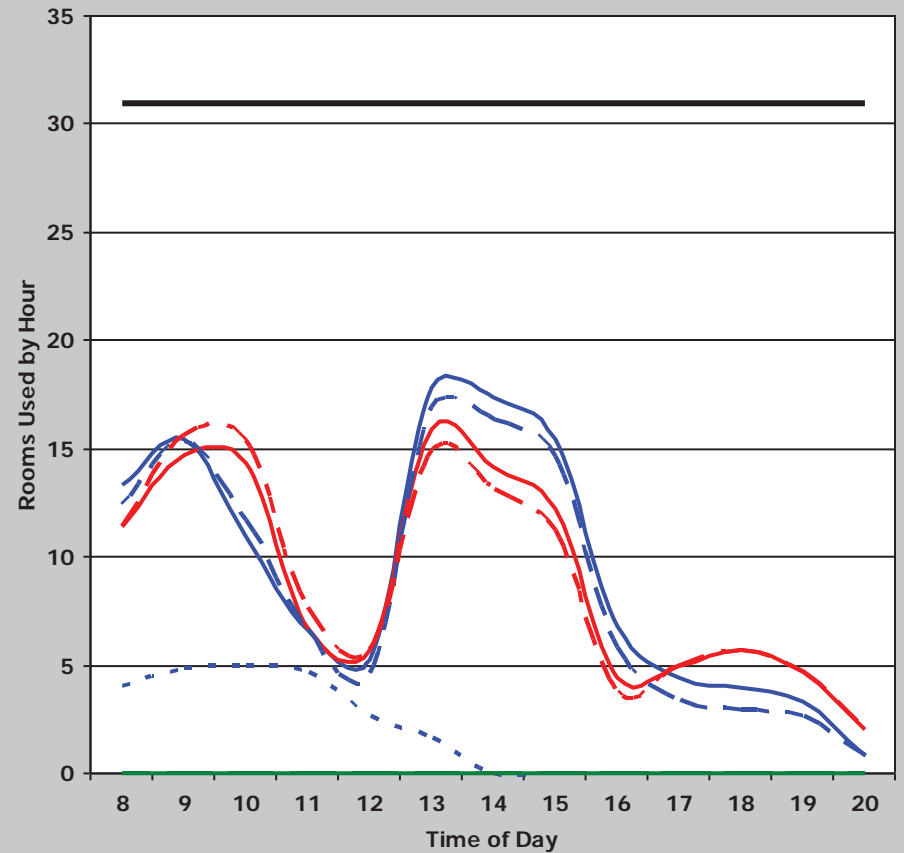


Institution	Overall Score	Classroom Score	Class Lab Score	Classroom						Class Laboratory							
				Demand	Weighted Score	Utilization	Weighted Score	Average Percent Fill	Weighted Score	Demand	Weighted Score	Utilization	Weighted Score	Average Percent Fill	Weighted Score		
TSTC-Marshall	74	33	41	16	9	13	8	54%	16	21	9	19	16	58%	16		
				Classroom Weighted Scoring						Class Laboratory Weighted Scoring							
Score (weight = 9)		Score (weight = 8)		Score (weight = 8)		Score (weight = 8)		Score (weight = 9)		Score (weight = 8)		Score (weight = 8)		Score (weight = 8)			
45 or >	36	38 or >	32	65% or >	32	35 or >	36	25 or >	32	75% or >	32	30 - 34.9	27	20 - 24.9	24	65 - 74.9	24
38 - 44.9	27	34 - 37.9	24	55 - 64.9	24	25 - 29.9	18	15 - 19.9	16	55 - 64.9	16	25 - 29.9	18	15 - 19.9	16	55 - 64.9	16
31 - 37.9	18	30 - 33.9	16	45 - 54.9	16	< 25	9	< 15	8	< 55%	8	< 31	9	< 30	8	< 45%	8

**Classrooms**



**Class Laboratory**



— Monday    — Tuesday    - - - Wednesday    - - - Thursday  
- - - Friday    — Saturday    - - - Sunday    — Rooms