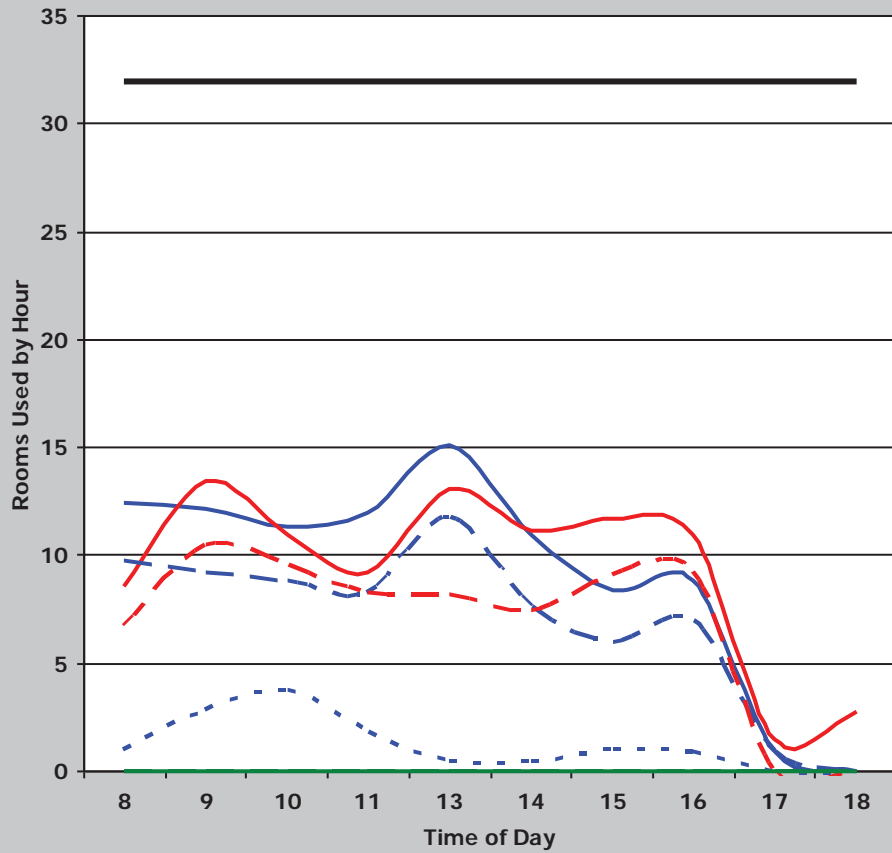
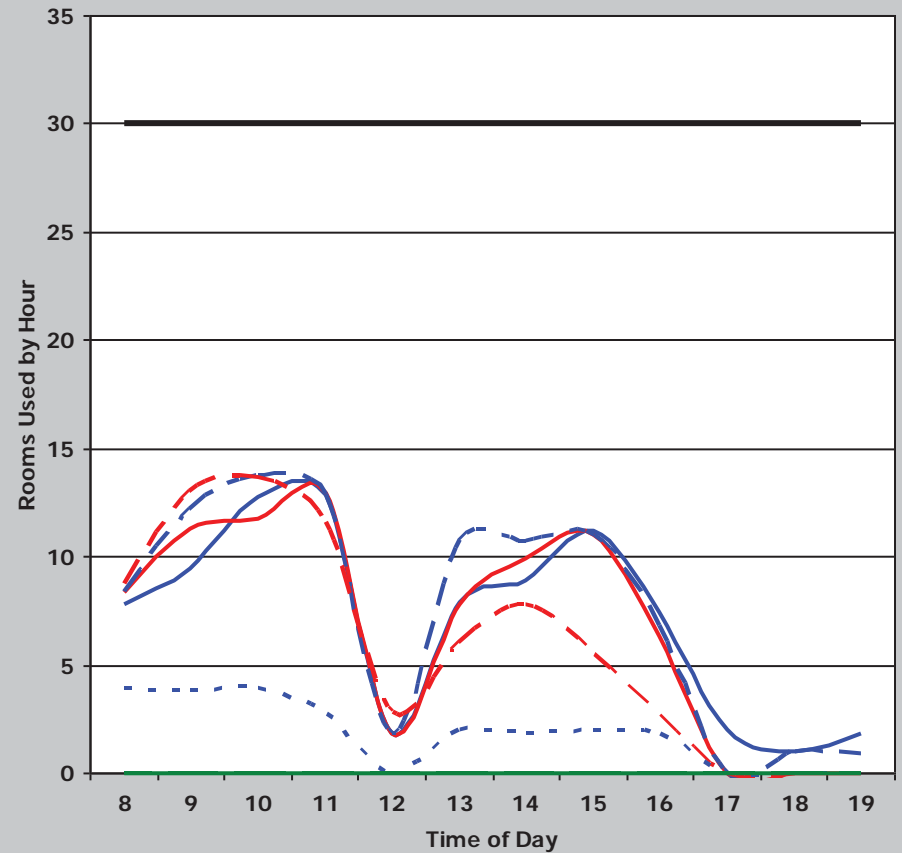


Institution	Overall Score	Classroom Score	Class Lab Score	Classroom						Class Laboratory							
				Demand	Weighted Score	Utilization	Weighted Score	Average Percent Fill	Weighted Score	Demand	Weighted Score	Utilization	Weighted Score	Average Percent Fill	Weighted Score		
TSTC-West Texas	50	25	25	14	9	13	8	40%	8	21	9	14	8	53%	8		
				Classroom Weighted Scoring						Class Laboratory Weighted Scoring							
Score (weight = 9)		Score (weight = 8)		Score (weight = 8)		Score (weight = 9)		Score (weight = 8)		Score (weight = 9)		Score (weight = 8)		Score (weight = 8)			
45 or >	36	38 or >	32	65% or >	32	35 or >	36	25 or >	32	75% or >	32	30 - 34.9	27	20 - 24.9	24	65 - 74.9	24
38 - 44.9	27	34 - 37.9	24	55 - 64.9	24	25 - 29.9	18	15 - 19.9	16	55 - 64.9	16	< 25	9	< 15	8	< 55%	8
31 - 37.9	18	30 - 33.9	16	45 - 54.9	16	< 31	9	< 30	8	< 45%	8						

**Classrooms**



**Class Laboratory**



— Monday    — Tuesday    - - - Wednesday    - - - Thursday  
- - - Friday    — Saturday    - - - Sunday    — Rooms