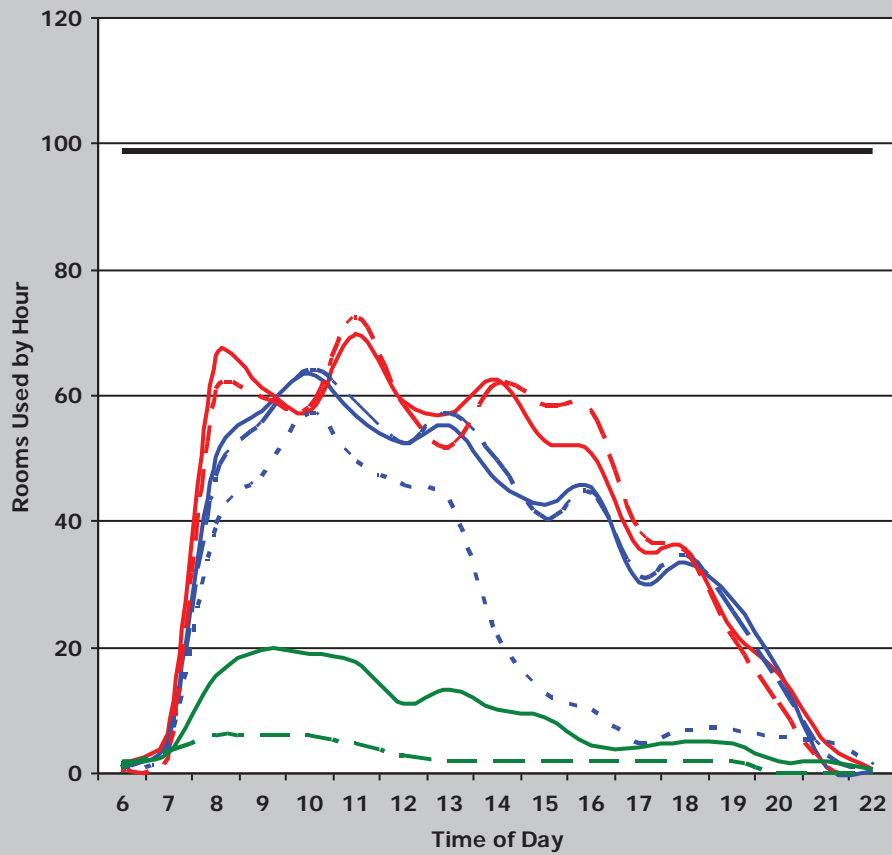
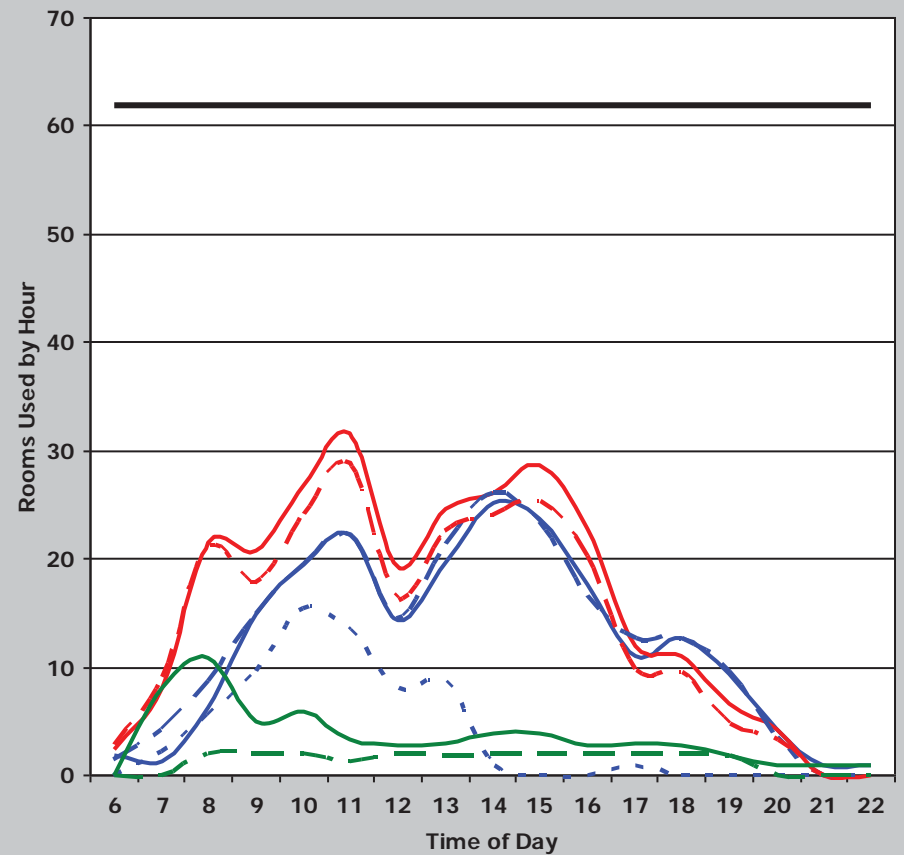


Institution	Overall Score	Classroom Score	Class Lab Score	Classroom						Class Laboratory							
				Demand	Weighted Score	Utilization	Weighted Score	Average Percent Fill	Weighted Score	Demand	Weighted Score	Utilization	Weighted Score	Average Percent Fill	Weighted Score		
Prairie View	141	75	66	38	27	37	24	61%	24	29	18	21	24	69%	24		
				Classroom Weighted Scoring						Class Laboratory Weighted Scoring							
Score (weight = 9)		Score (weight = 8)		Score (weight = 8)		Score (weight = 9)		Score (weight = 8)		Score (weight = 8)		Score (weight = 9)		Score (weight = 8)			
45 or >	36	38 or >	32	65% or >	32	35 or >	36	25 or >	32	75% or >	32	30 - 34.9	27	20 - 24.9	24	65 - 74.9	24
38 - 44.9	27	34 - 37.9	24	55 - 64.9	24	25 - 29.9	18	15 - 19.9	16	55 - 64.9	16	< 25	9	< 15	8	< 55%	8
31 - 37.9	18	30 - 33.9	16	45 - 54.9	16	< 31	9	< 30	8	< 45%	8						

Classrooms



Class Laboratory



— Monday — Tuesday - - - Wednesday - - - Thursday
- - - Friday — Saturday - - - Sunday — Rooms