

Legislative Appropriations Request  
For Fiscal Years 2024 and 2025

Submitted to the  
Office of the Governor, Budget Division,  
and the Legislative Budget Board

by

University of Houston-Victoria

Date of Submission

August 5, 2022

Schedules Not Included		
Agency Code: 765	Agency Name: University of Houston - Victoria	Date: August 5, 2022
For the schedules identified below, the University of Houston-Victoria either has no information to report or the schedule is not applicable. Accordingly, these schedules have been excluded from the University of Houston-Victoria Legislative Appropriations Request for the 2024-25 biennium.		
Number	Name	
2.C.1.	Operating Cost Detail Base Request	
3.B	Rider Revisions and Additional Request	
3.C.	Rider Appropriations and Unexpended Balances Request	
5.A.- 5.E.	Capital Budget Projects	
6.B.	Current Biennium One-time Expenditure Schedule	
6.C.	Federal Funds Supporting Schedule	
6.D.	Federal Funds Tracking Schedule	
6.E.	Estimated Revenue Collections Supporting Schedule	
6.F.	Advisory Committee Supporting Schedule	
6.G.	Homeland Security Funding Schedule	
6.J.	Budgetary Impacts Related to Federal Health Care Reform	
6.K.	Budgetary Impacts Related to the Budget Control Act--Sequestration	
7.A.	Administrative and Support Costs (Direct and Indirect)	
7.B.	Direct Administrative and Support Costs	
Schedule 8.A.	Tuition and Revenue Bond Projects	
8.C.	Tuitoin Revenue Bonds Request by Project (at University of Houston System)	

**University of Houston-Victoria  
Legislative Appropriations Request 2024 and 2025**

**Table of Contents**

Administrator’s Statement .....	1
Organizational Chart.....	7
Mission Statement.....	8
Budget Overview-Biennial Amounts.....	11
2. A. Summary of Base Request by Strategy .....	12
2. B. Summary of Base Request by Method of Finance .....	16
2. C. Summary of Base Request by Object of Expense.....	25
2. D. Summary of Base Request by Objective Outcomes.....	26
2. E. Summary of Exceptional Items Request .....	29
2. F. Summary of Total Request by Strategy .....	30
2. G. Summary of Total Request Objective Outcomes .....	34
3. A. Strategy Request	
Operations Support.....	37
Staff Group Insurance Premiums .....	41
Workers’ Compensation Insurance .....	43
Texas Public Education Grants .....	45
Educational and General Space Support .....	47
Master’s Degree in Nursing .....	49
Expansion Funding.....	51
Center for Regional Outreach .....	53
Small Business Development Center .....	55
Institutional Enhancement.....	58
Comprehensive Research Fund.....	61

4. A. Exceptional Item Request Schedule	
COVID-19 Continued Impact Funding .....	64
Community of Practice Centers for Mental Health .....	66
4. B. Exceptional Items Strategy Allocation Schedule	
COVID-19 Continued Impact Funding .....	68
Community of Practice Centers for Mental Health .....	69
4. C. Exceptional Items Strategy Request.....	70
6. A. Historically Underutilized Business (HUB) Supporting Schedule .....	71
6. H. Estimated Funds Outside the Institutions Bill Pattern .....	73
<b>Supporting Schedules</b>	
Schedule 1A – Other Educational and General Income.....	74
Schedule 2 – Selected Educational, General and Other Funds .....	77
Schedule 3A – Staff Group Insurance Data Elements (ERS) .....	79
Schedule 4 – Computation of OASI .....	82
Schedule 5 – Calculation of Retirement Proportionality and ORP Differential .....	83
Schedule 6 – Constitutional Capital Funding .....	84
Schedule 7 – Personnel .....	85
Schedule 8B – Tuition Revenue Bond Issuance History .....	86
Schedule 9 – Non-Formula Support	
COVID-19 Continued Impact Funding.....	87
Community of Practice Centers for Mental Health.....	89
Institutional Enhancement .....	91
Small Business Development Center .....	93

## Administrator's Statement

8/12/2022 10:16:46AM

88th Regular Session, Agency Submission, Version 1  
Automated Budget and Evaluation System of Texas (ABEST)

---

### 765 University of Houston - Victoria

---

The University of Houston-Victoria (UHV) shares with all institutions of higher education the responsibility to serve the diverse educational needs of students in Texas. In 1973, UHV was established as a senior-level extension of the University of Houston and became an independently accredited institution as part of the UH System in 1983. During the 81st Legislative Session, the University received approval to offer freshman and sophomore courses through downward expansion, and the University admitted its first freshman class in 2010. Located between the large metropolitan areas of Houston, San Antonio, Austin, and Corpus Christi, UHV is the only institution of higher education offering bachelors and master's degrees within a 100-mile radius of Victoria.

UHV contributes significantly to Texas public higher education by providing access to a large number of first-generation, low-income, minority and rural populations. Over 95% of those students are from Texas and 70% of those are minority students. The student body at UHV has changed dramatically since downward expansion. Prior to that, the University was an upper-level commuter campus with a predominately Caucasian population with an average age in the late twenties. With the enrollment of freshman and sophomore students, the University now serves a younger, more diverse population. Of the Fall 2021 freshman class at UHV, 61% are first-generation college students, and of those almost half are Hispanic. UHV is designated by the U.S. Department of Education as a Hispanic Serving Institution (HSI).

COVID-19 is continuing to impact UHV. Federal relief funds and reduced expenses helped with the initial financial impacts. Longer term impacts such as rapid inflation, a competitive market drawing away our best employees and lagging student enrollment will cause financial pressures on the university in the years to come. UHV received funding for campus expansion and has brought new buildings online for classrooms with tuition revenue bonds and residential housing with auxiliary debt in the past two years. With declines in student enrollments, and corresponding decreases in tuition, fee, and auxiliary revenues, significant challenges are occurring for financial sustainability.

UHV's Non-formula Support and Exceptional Item Funding requests continue to support downward expansion and ongoing program and community-outreach initiatives. The goal of UHV is to grow enrollment by increasing student retention and enhancing completion rates.

UHV performs background checks on all new faculty and staff as allowed by the Texas Education Code, Section 51.215 and the Texas Government Code, Section 411.094.

UHV's base funded non-formula support includes three priorities:

- **Expansion Funding**

During the 81st Legislative Session (2009), UHV received authority to offer lower division courses to freshmen and sophomores beginning fall 2010. Downward expansion has been the key driver to expanding access to higher education in this region of South Texas. As with other Texas universities that transitioned from two to four-year campuses, additional funds are necessary to provide access and meet new student service needs. As the only four-year residential university within a 100-mile radius of Victoria, UHV's focus continues to be serving students who have been historically underrepresented in higher education, including Hispanics, first-generation students, and students from rural high schools with low rates of college recruitment and participation. UHV continues to improve existing student support services and provide opportunities to make the experience at UHV a positive one that will encourage degree completion. In support of that focus, we highlight existing non-formula funding that is critical to our institution.

The Legislature provides essential funding to six of the state's smaller regional institutions to enable them to better meet the growing higher education needs of their communities and the state. Previously known as transition funding and downward expansion funding, the 86th Legislature renamed this funding, reduced the amount, and included rider language to establish scheduled phasing out of this funding. This base funding is \$2,447,658 for the biennium (\$1,223,829 per year).

- **Institutional Enhancement**

## Administrator's Statement

8/12/2022 10:16:46AM

88th Regular Session, Agency Submission, Version 1  
Automated Budget and Evaluation System of Texas (ABEST)

---

### 765 University of Houston - Victoria

---

UHV is succeeding in downward expansion efforts and continues to expand academic and extracurricular programs in the region to meet the needs of a diverse service population through its on-campus sites and on-line programs. These funds have allowed UHV to hire additional qualified faculty to support past enrollment growth, to provide quality instructional labs, and to establish new academic programs. Distance learning programs and courses are offered by traditional face-to-face, on-line delivery and interactive television (ITV) at our home campus in Victoria and the off-campus location in Katy, Texas. Through a partnership of UH System universities and the local community college, the UH System Centers provide upper-level and graduate courses leading to bachelor's and master's degrees in a variety of fields. This collaboration expands access to quality educational courses and programs. UHV remains a national leader in online learning with several degrees and most courses available through distance education. This base funding is \$5,035,868 for the biennium (\$2,517,935 per year).

- UHV Small Business Development Center (SBDC)

The University of Houston-Victoria Small Business Development Center (UHV-SBDC) serves 11 rural, underserved, counties. The mission of the SBDC is to promote small business development through extension services and to promote the growth, expansion, innovation, increased productivity, and improved management of small business. This is achieved through activities of individual business advising and technical assistance, training seminars and advocacy. SBDCs are a revenue positive organization to the State, funded by a combination of state and federal dollars. The UHV-SBDC is a part of the Texas South-West Small Business Development Center Network which services 79 counties in Texas.

During 2021 UHV-SBDC assisted 320 small businesses through 2,500 hours of service. Staff created and retained 155 new jobs, started 17 businesses, and helped access \$4.5M in capital formation. Training was also provided to over 560 small business attendees.

UHV-SBDC played a huge role assisting small businesses access and manage COVID survival and recovery by continuing to utilize SBA disaster loans and other assistance provided by private and public lenders. Small business recovery will continue well into the 2024-25 biennium and beyond. Many Texas rural communities often lack the economic development capacity and need technical assistance, information, and resources in a hands-on way. Funding for 2024-25 will sustain and expand economic and small business resources to a historically underserved, rural territory. This will assist rural Texas businesses and communities achieve greater success creating jobs and investments. This base funding is \$306,352 for the biennium (\$153,176 per year).

UHV is requesting Exceptional Item funding for the following three priorities:

- COVID-19 Continued Impact Funding

FY 2024 \$3,520,671    FY 2025 \$3,520,671

UHV has received \$13,830,067 in Higher Education Emergency Relief Funds (HEERF) of which \$1,464,851 offset reduced state appropriations in FY 20 (\$732,425) and FY 21 (\$732,426).

The impact of COVID-19 at UHV exceeds \$24.2 million in lost revenues and additional associated expenses in FY 20, FY 21, and FY 22. UHV's rural location and student diversity of first-generation college students has been especially impacted by the pandemic and enrollment-based tuition and fee revenues have declined by over \$5.9 million in FY 22 as compared to pre-pandemic levels. In FY 2022 \$3,520,671 HEERF funds recovered for lost revenues were utilized for operating budget deficits. UHV requests hold harmless funding for faculty salaries and utilities.

- UHV CPC for Mental Health

FY 2024 \$826,090    FY 2025 \$426,795

UHV seeks funding to establish two Community of Practice Centers with mental health clinics in Katy and Victoria to respond to the growing mental health needs of these regions and in response to the national mental health crisis that has accelerated since the COVID-19 pandemic. Each year in the U.S. one in five adults and one in six youths experience mental illness, which has broader implications to the community at large. On the other hand, there is a shortage of mental health practitioners and

## Administrator's Statement

8/12/2022 10:16:46AM

88th Regular Session, Agency Submission, Version 1  
Automated Budget and Evaluation System of Texas (ABEST)

---

### 765 University of Houston - Victoria

---

counseling professionals. The two Community of Practice Centers will involve UHV's Counseling Training Clinics in Katy and Victoria and will partner with all impacted groups such as K-12 schools, the justice system, and community-based programs to share best practices and create new knowledge about care and service related to mental health. The clinics will provide access to a variety of affordable mental health care and professional counseling to the Katy and Victoria communities while the Community of Practice Centers will serve as a mechanism to collect and disseminate information and data related to mental health.

UHV is well positioned to implement the Community of Practice Center for Mental Health in Katy and Victoria as the Clinical Mental Health Counseling Program is Council for Accreditation of Counseling and Related Education Programs (CACREP) accredited and the graduate students in the Counseling and Forensic Psychology are closely supervised by well-qualified faculty members who prepare our graduates to become ethical, evidence-based practitioners of counseling. We anticipate that the two Community of Practice Centers for Mental Health in Katy and Victoria will be able to help respond to the mental health care professional shortage in Katy and Victoria in working with UHV's Clinical Mental Health Program and Counseling/Forensic Psychology Program, by creating a pipeline of future mental health care practitioners who are likely to continue to practice in the same regions as their respective training clinics.

- UHV Small Business Development Center (SBDC)

FY 2024 \$295,694 FY 2025 \$295,694

Small Business Development Center (SBDC) request full funding for services and outreach efforts for small and minority owned businesses in the 11 -county region served by UHV SBDC. Currently, small businesses across the region are reacting to the devastating effects of COVID, inflation, supply chain disruptions, workforce storages, lack of broadband both in underserved urban and rural areas and are turning to the SBDCs for assistance. The need for services in the UHV-SBDC region is outpacing the resources to meet that need. UHV and the Texas South-West SBDC Network will be coordinating with SBDC Administrators across the state, to request additional appropriations to support the demand for SBDC services.

The following are additional important areas of concern for UHV, and we respectfully request that they receive due consideration and support during the Legislative Session:

- Formula funding is the foundation of the state's public universities. Without stable, reliable base formula funding, Texas universities will not be able to meet the needs of their students or adequately plan for growth. The statewide formula funding rate for the FY 2022-23 biennium (\$55.66) remains significantly lower than the rate for the FY 2010-11 biennium (\$62.19). For the upcoming biennium, the University of Houston – Victoria encourages the Legislature to provide increased formula funding to cover enrollment growth and inflation, which would significantly reduce pressure on our universities to increase tuition and fees paid by students.

- Employee Health Care Costs

Provide continued support. Healthcare costs continue to rise at annual rates outpacing the actual rate of inflation - sometimes often double or triple the actual inflation rate. Shifting costs to employees is neither a desirable nor long-term sustainable solution. While this may save money in the short term, over time employee morale and satisfaction will be adversely affected, leading to problems attracting and retaining faculty and staff.

- Hazlewood Exemption Funding

UHV is committed to supporting veterans and their families by expanding opportunities for them to earn a college degree. Simply put, Hazlewood costs are unsustainable. Absent full state coverage, funding for these exemptions must be attained through other resources, including tuition paid by other students. As the Comptroller of Public Accounts noted in August 2016, public colleges and universities are losing tuition revenue due to the exemption, and as a result "students without Hazlewood benefits are subsidizing those who have them." UHV recommends that the state appropriate resources to cover all Hazlewood exemptions or modify the exemption. It is requested that funds be appropriated by the state to cover the full costs of Hazlewood Act exemptions. While UHV is dedicated in supporting educational

---

**765 University of Houston - Victoria**

---

opportunities and benefits for veterans and their families, these exemptions have a greater proportional impact on the limited resources available to smaller institutions. The value of the Hazlewood Act and the size of the exemption has increased, providing very significant financial benefits to veterans. The value of Hazlewood Act exemptions issued by UHV since FY09 have increased more than threefold:

FY09 UHV Hazlewood exemptions in total tuition \$200,839, of which \$69,699 were from statutory tuition, with no reimbursements from the state at that time.

FY21 UHV Hazlewood Exemptions were a total tuition exemption of \$ 916,764. The statutory tuition portion was \$ 187,415 of which UHV received a reimbursement of \$ 55,901 from the state.

FY22 UHV Hazlewood Exemptions were a total tuition exemption of \$ 736,815. The statutory tuition portion was \$ 147,888 of which UHV received a reimbursement of \$60,740 from the state.

- **Financial Aid/TEXAS Grants**

TEXAS Grants provide underprivileged students funding opportunities to attend higher education institutions such as UHV. This is especially important and beneficial to Hispanic students who are underrepresented at higher education institutions and at UHV, representing over 60% of incoming students. State funding for financial aid is essential to expand access to higher education and facilitate student graduation. This is especially true at the University of Houston - Victoria, where the education of many of our students is not paid for by their families. Rather, students typically work to pay for college and rely heavily on financial aid. Covid-19 has been particularly hard on those students who work full-time and part-time jobs to pay for their tuition, many of them are unable to work or are laid off during the pandemic shutdown. Without further investment in state supported financial aid programs, a large number of these students will be unable to attend and complete a degree in the coming years.

- **Conversion of Expansion Funding to Institutional Enhancement**

Existing non-formula expansion funding is critical to our institutions, University of Houston-Clear Lake and University of Houston- Victoria. The Legislature provides essential funding to six of the state's smaller regional institutions in order to enable them to better meet the growing higher education needs of their communities and the state. Previously known as transition funding and downward expansion funding, the 86th Legislature renamed this funding, cut the amount, and included rider language to establish scheduled phasing out of this funding. Given the still-present unprecedented financial hardships from the COVID-19 pandemic and the essential education and workforce training the institutions provide, the University of Houston Victoria requests that this funding, similar to Hold Harmless funding in previous biennia, be converted to Institutional Enhancement funding.

- **Performance Based Funding for Comprehensive Regional Universities**

The 87th Legislature recognized the importance of the state's 27 Comprehensive Regional Universities by passing SB1295 and using federal funding to support this legislation. For the upcoming biennium, we request \$80 million in General Revenue to provide two years of performance funding to continue student support programs at our Comprehensive Regional Universities. This amount would provide \$250,000 in base funding per year and \$1,000 per at-risk student per year. With this support, these institutions can help address the state's decline in direct enrollment from high school to college and close the gap in these institutions' graduation rates compared to the emerging research and research institutions. Increasing regionals' college enrollment and graduation rates will add more skilled employees to the workforce and improve regional economies. In FY 2022, UHV will receive \$484,551.

**SUMMARY**

The history of Texas universities that have transitioned from upper-level two-year institutions to traditional four-year undergraduate institutions with residential campuses shows a pattern of accelerated growth compared to other universities prior to the pandemic. This has been the pattern for UHV as well.

As these upper-level institutions transitioned to four-year campuses, a common denominator associated with that growth was the continued support from the Legislature for funding. These expenses are associated with marketing and recruitment efforts, additional scholarships, and other aid required to attract new students. Increased



**Administrator's Statement**

8/12/2022 10:16:46AM

88th Regular Session, Agency Submission, Version 1  
Automated Budget and Evaluation System of Texas (ABEST)

---

**765 University of Houston - Victoria**

---

staffing and security needs must also be met, and support must be provided to retain these students. UHV has been building a core foundation for this growth.

UHV continues to develop its academic and extracurricular programs and its presence within the region through its off-campus delivery sites and on-line programs. UHV's Master Plan foresees Victoria as a "college town" for students who are seeking a university experience outside the populated metropolitan belt extending from Houston to Austin to San Marcos to San Antonio to Corpus Christi.

The University of Houston-Victoria, while a small institution, has had and will continue to have an important and growing influence on the welfare of the region:

- We enjoy widespread community and regional support.
- We have trained most of the teachers and many of the managers and entrepreneurs in the area.
- We have developed considerable experience and expertise in outreach, community cultivation, and collaboration, which serves the interests of its region and is at the disposal of the UH System.

Post pandemic needs will require flexibility for sustainability as the future of UHV and its strategic plan is reset.

Thank you for your support and your consideration of these requests.

Robert K. Glenn, Ph.D.

President

University of Houston-Victoria



## CERTIFICATE

**Agency Name** University of Houston -Victoria

This is to certify that the information contained in the agency Legislative Appropriations Request filed with the Legislative Budget Board (LBB) and the Governor's Office Budget Division (Governor's Office) is accurate to the best of my knowledge and that the electronic submission to the LBB via the Automated Budget and Evaluation System of Texas (ABEST) and the PDF file submitted via the LBB Document Submission application are identical.

Additionally, should it become likely at any time that unexpended balances will accrue for any account, the LBB and the Governor's Office will be notified in writing in accordance with Article IX, Section 7.01 (2022-23 GAA).

**Chief Executive Officer or Presiding Judge**

Robert K. Glenn

Signature

Robert K. Glenn, Ph.D.

Printed Name

President

Title

August 5, 2022

Date

**Board or Commission Chair**

Tilman J. Fertitta

Signature

Tilman J. Fertitta

Printed Name

Chairman, UH System Board of Regents

Title

August 5, 2022

Date

**Chief Financial Officer**

Beverly C. Shuford

Signature

Beverly C. Shuford, Ph.D., C.P.A.

Printed Name

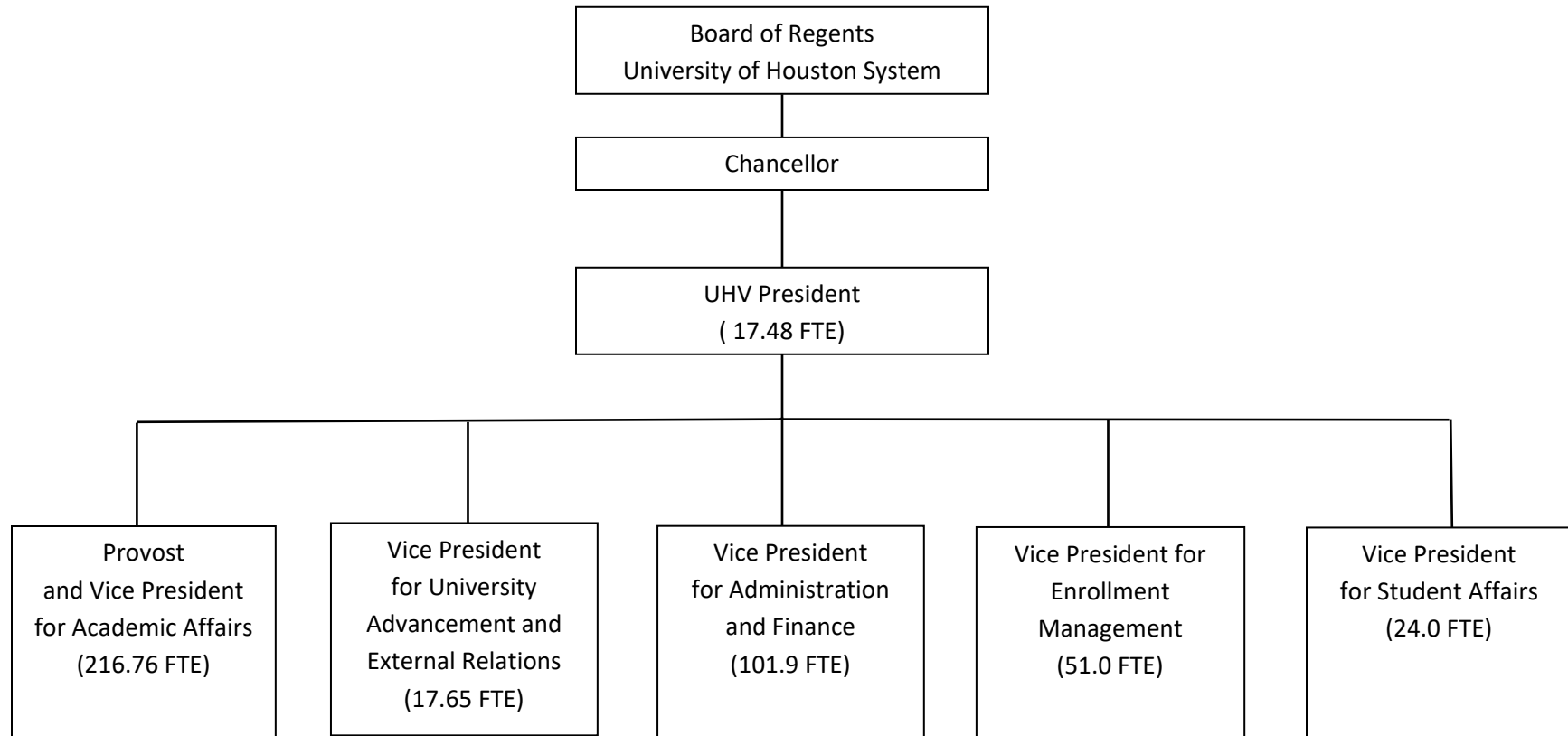
Vice President for Administration and Finance

Title

August 5, 2022

Date

# University of Houston – Victoria Organizational Chart



---

Agency code: **765**      Agency name: **University of Houston - Victoria**

---

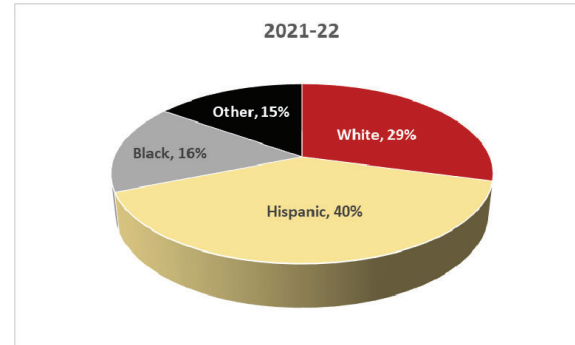
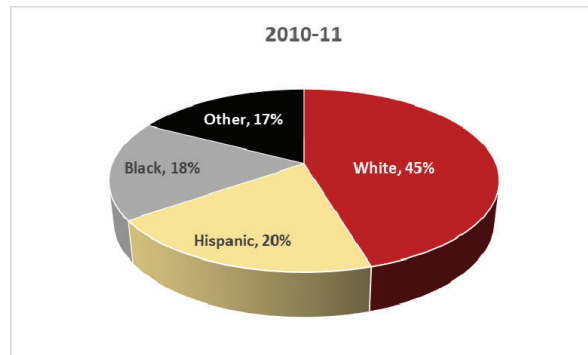
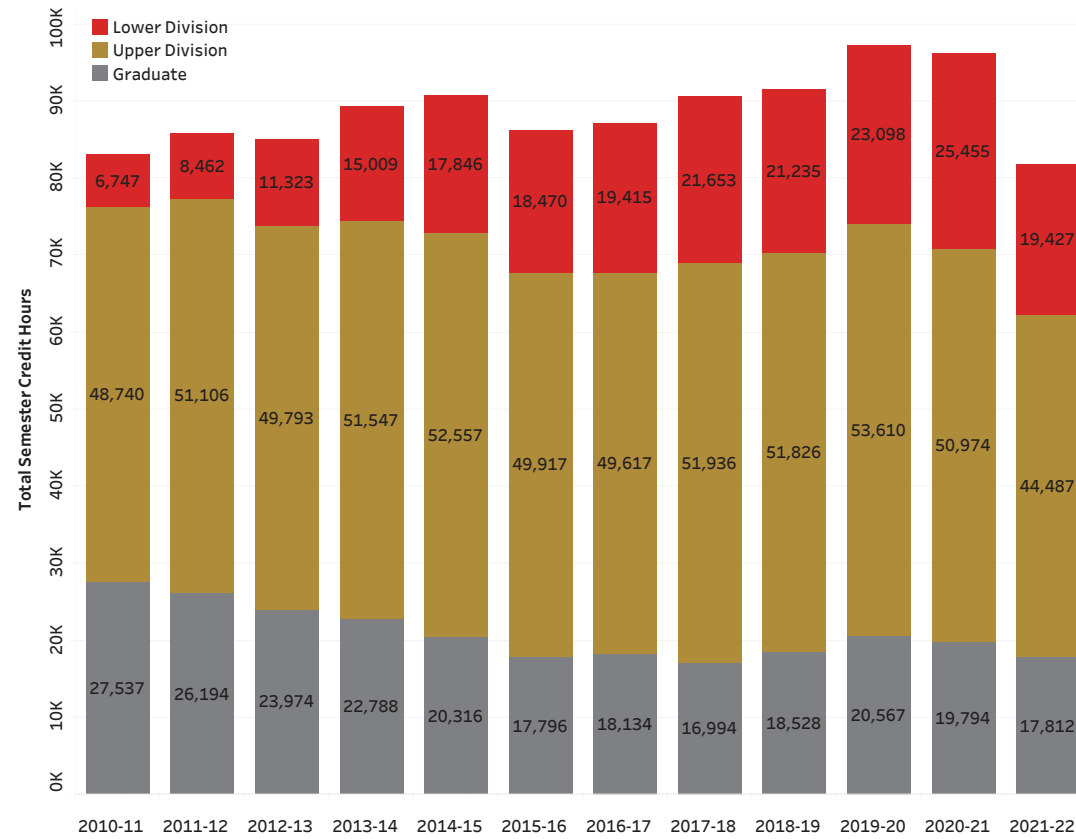
**AGENCY MISSION**

---

The University of Houston-Victoria (UHV), a dynamic destination institution serving Texas and the world, is dedicated to providing every student educational and leadership opportunities to become a successful professional and engaged global citizen. Innovation educational activities challenge students to make meaningful connections between their learning and their lives in a complex world. UHV promotes economic development and advances quality of life through teaching, research, and service excellence.

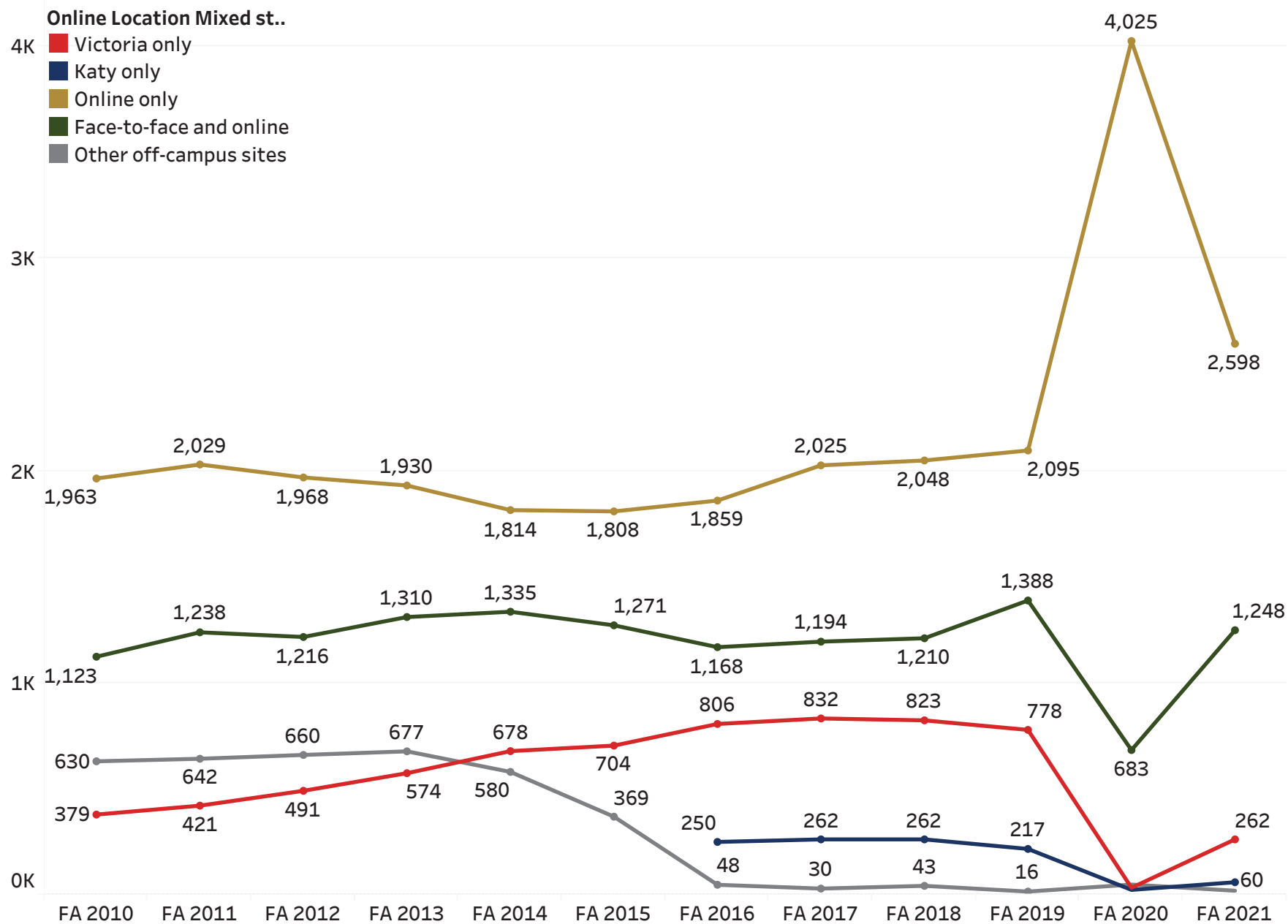
# University of Houston-Victoria

Total Semester Credit Hours by Level and Academic Year



# University of Houston-Victoria

## Where students take their classes (Fall Semesters)



**Budget Overview - Biennial Amounts**  
**88th Regular Session, Agency Submission, Version 1**  
Automated Budget and Evaluation System of Texas (ABEST)

765 University of Houston - Victoria											
Appropriation Years: 2024-25											
	GENERAL REVENUE FUNDS		GR DEDICATED		FEDERAL FUNDS		OTHER FUNDS		ALL FUNDS		EXCEPTIONAL ITEM FUNDS
	2022-23	2024-25	2022-23	2024-25	2022-23	2024-25	2022-23	2024-25	2022-23	2024-25	2024-25
<b>Goal: 1. Provide Instructional and Operations Support</b>											
1.1.1. Operations Support	29,196,770		8,040,137						37,236,907		
1.1.3. Staff Group Insurance Premiums			2,635,862	2,662,726					2,635,862	2,662,726	
1.1.4. Workers' Compensation Insurance	51,171	73,876	13,268						64,439	73,876	
1.1.6. Texas Public Education Grants			1,356,378	1,416,470					1,356,378	1,416,470	
<b>Total, Goal</b>	<b>29,247,941</b>	<b>73,876</b>	<b>12,045,645</b>	<b>4,079,196</b>					<b>41,293,586</b>	<b>4,153,072</b>	
<b>Goal: 2. Provide Infrastructure Support</b>											
2.1.1. E&G Space Support	1,394,925								1,394,925		
<b>Total, Goal</b>	<b>1,394,925</b>								<b>1,394,925</b>		
<b>Goal: 3. Provide Non-formula Support</b>											
3.1.2. Expansion Funding		2,447,658								2,447,658	
3.3.2. Small Business Development Center	306,352	306,352							306,352	306,352	
3.4.1. Institutional Enhancement		5,035,870					1,435	1,798	1,435	5,037,668	
3.5.1. Exceptional Item Request											8,294,227
<b>Total, Goal</b>	<b>306,352</b>	<b>7,789,880</b>					<b>1,435</b>	<b>1,798</b>	<b>307,787</b>	<b>7,791,678</b>	<b>8,294,227</b>
<b>Goal: 6. Research Funds</b>											
6.3.1. Comprehensive Research Fund	12,800								12,800		
<b>Total, Goal</b>	<b>12,800</b>								<b>12,800</b>		
<b>Total, Agency</b>	<b>30,962,018</b>	<b>7,863,756</b>	<b>12,045,645</b>	<b>4,079,196</b>			<b>1,435</b>	<b>1,798</b>	<b>43,009,098</b>	<b>11,944,750</b>	<b>8,294,227</b>
<b>Total FTEs</b>									<b>247.9</b>	<b>247.9</b>	<b>40.0</b>

## 2.A. Summary of Base Request by Strategy

8/12/2022 10:16:50AM

88th Regular Session, Agency Submission, Version 1

Automated Budget and Evaluation System of Texas (ABEST)

### 765 University of Houston - Victoria

Goal / Objective / STRATEGY	Exp 2021	Est 2022	Bud 2023	Req 2024	Req 2025
<b>1</b> Provide Instructional and Operations Support					
<b>1</b> <i>Provide Instructional and Operations Support</i>					
<b>1 OPERATIONS SUPPORT</b> (1)	17,028,506	18,508,318	18,728,589	0	0
<b>3 STAFF GROUP INSURANCE PREMIUMS</b>	1,003,475	1,304,499	1,331,363	1,331,363	1,331,363
<b>4 WORKERS' COMPENSATION INSURANCE</b>	30,855	27,501	36,938	36,938	36,938
<b>6 TEXAS PUBLIC EDUCATION GRANTS</b>	720,731	648,143	708,235	708,235	708,235
<b>TOTAL, GOAL 1</b>	<b>\$18,783,567</b>	<b>\$20,488,461</b>	<b>\$20,805,125</b>	<b>\$2,076,536</b>	<b>\$2,076,536</b>
<b>2</b> Provide Infrastructure Support					
<b>1</b> <i>Provide Operation and Maintenance of E&amp;G Space</i>					
<b>1 E&amp;G SPACE SUPPORT</b> (1)	440,037	566,122	828,803	0	0
<b>TOTAL, GOAL 2</b>	<b>\$440,037</b>	<b>\$566,122</b>	<b>\$828,803</b>	<b>\$0</b>	<b>\$0</b>

### **3** Provide Non-formula Support

#### **1** *INSTRUCTIONAL SUPPORT*

(1) - Formula funded strategies are not requested in 2024-25 because amounts are not determined by institutions.



2.A. Summary of Base Request by Strategy

8/12/2022 10:16:50AM

88th Regular Session, Agency Submission, Version 1

Automated Budget and Evaluation System of Texas (ABEST)

765 University of Houston - Victoria

Goal / Objective / STRATEGY	Exp 2021	Est 2022	Bud 2023	Req 2024	Req 2025
1 MASTER'S DEGREE IN NURSING	0	0	0	0	0
2 EXPANSION FUNDING	0	0	0	1,223,829	1,223,829
<u>3</u> Public Service					
1 CENTER FOR REGIONAL OUTREACH	0	0	0	0	0
2 SMALL BUSINESS DEVELOPMENT CENTER	153,176	153,176	153,176	153,176	153,176
<u>4</u> INSTITUTIONAL SUPPORT					
1 INSTITUTIONAL ENHANCEMENT	473,731	536	899	2,518,834	2,518,834
<u>5</u> EXCEPTIONAL ITEM REQUEST					
1 EXCEPTIONAL ITEM REQUEST	0	0	0	0	0
TOTAL, GOAL 3	\$626,907	\$153,712	\$154,075	\$3,895,839	\$3,895,839

6 Research Funds

3 Comprehensive Research Fund

1 COMPREHENSIVE RESEARCH FUND	41,216	6,400	6,400	0	0
-------------------------------	--------	-------	-------	---	---

**2.A. Summary of Base Request by Strategy**

8/12/2022 10:16:50AM

88th Regular Session, Agency Submission, Version 1

Automated Budget and Evaluation System of Texas (ABEST)

**765 University of Houston - Victoria**

<b>Goal / Objective / STRATEGY</b>		<b>Exp 2021</b>	<b>Est 2022</b>	<b>Bud 2023</b>	<b>Req 2024</b>	<b>Req 2025</b>
<b>TOTAL, GOAL 6</b>		<b>\$41,216</b>	<b>\$6,400</b>	<b>\$6,400</b>	<b>\$0</b>	<b>\$0</b>
<b>TOTAL, AGENCY STRATEGY REQUEST</b>		<b>\$19,891,727</b>	<b>\$21,214,695</b>	<b>\$21,794,403</b>	<b>\$5,972,375</b>	<b>\$5,972,375</b>
<b>TOTAL, AGENCY RIDER APPROPRIATIONS REQUEST*</b>					<b>\$0</b>	<b>\$0</b>
<b>GRAND TOTAL, AGENCY REQUEST</b>		<b>\$19,891,727</b>	<b>\$21,214,695</b>	<b>\$21,794,403</b>	<b>\$5,972,375</b>	<b>\$5,972,375</b>

2.A. Summary of Base Request by Strategy

8/12/2022 10:16:50AM

88th Regular Session, Agency Submission, Version 1

Automated Budget and Evaluation System of Texas (ABEST)

765 University of Houston - Victoria

Goal / Objective / STRATEGY	Exp 2021	Est 2022	Bud 2023	Req 2024	Req 2025
<u>METHOD OF FINANCING:</u>					
<b>General Revenue Funds:</b>					
1 General Revenue Fund	13,934,869	15,481,288	15,480,730	3,931,878	3,931,878
<b>SUBTOTAL</b>	<b>\$13,934,869</b>	<b>\$15,481,288</b>	<b>\$15,480,730</b>	<b>\$3,931,878</b>	<b>\$3,931,878</b>
<b>General Revenue Dedicated Funds:</b>					
704 Est Bd Authorized Tuition Inc	1,103,411	987,746	828,600	0	0
770 Est. Other Educational & General	4,379,716	4,745,125	5,484,174	2,039,598	2,039,598
<b>SUBTOTAL</b>	<b>\$5,483,127</b>	<b>\$5,732,871</b>	<b>\$6,312,774</b>	<b>\$2,039,598</b>	<b>\$2,039,598</b>
<b>Other Funds:</b>					
599 Economic Stabilization Fund	472,231	0	0	0	0
802 Lic Plate Trust Fund No. 0802, est	1,500	536	899	899	899
<b>SUBTOTAL</b>	<b>\$473,731</b>	<b>\$536</b>	<b>\$899</b>	<b>\$899</b>	<b>\$899</b>
<b>TOTAL, METHOD OF FINANCING</b>	<b>\$19,891,727</b>	<b>\$21,214,695</b>	<b>\$21,794,403</b>	<b>\$5,972,375</b>	<b>\$5,972,375</b>

\*Rider appropriations for the historical years are included in the strategy amounts.

**2.B. Summary of Base Request by Method of Finance**

8/12/2022 10:16:50AM

88th Regular Session, Agency Submission, Version 1

Automated Budget and Evaluation System of Texas (ABEST)

Agency code:	<b>765</b>	Agency name:	<b>University of Houston - Victoria</b>			
METHOD OF FINANCING		Exp 2021	Est 2022	Bud 2023	Req 2024	Req 2025
<b><u>GENERAL REVENUE</u></b>						
<b><u>1</u></b>	General Revenue Fund					
	<i>REGULAR APPROPRIATIONS</i>					
	Regular Appropriations from MOF Table (2020-21 GAA)	\$14,646,687	\$0	\$0	\$0	\$0
	Regular Appropriations from MOF Table (2022-23 GAA)	\$0	\$14,632,569	\$14,632,011	\$0	\$0
	Regular Appropriations from MOF Table (2024-25 GAA)	\$0	\$0	\$0	\$3,931,878	\$3,931,878
	<i>RIDER APPROPRIATION</i>					
	Art IX, Sec 14.05, UB Authority within the Same Biennium (2020-21 GAA)	\$20,608	\$0	\$0	\$0	\$0
	<b>Comments:</b> Comprehensive Research					
	Art IX, Sec 17.47, 87th Leg, Regular Session, Additional Funding for Formula Funding (2022-23 GAA)	\$0	\$848,719	\$848,719	\$0	\$0
	<i>SUPPLEMENTAL, SPECIAL OR EMERGENCY APPROPRIATIONS</i>					

**2.B. Summary of Base Request by Method of Finance**

8/12/2022 10:16:50AM

88th Regular Session, Agency Submission, Version 1

Automated Budget and Evaluation System of Texas (ABEST)

Agency code: 765		Agency name: University of Houston - Victoria				
METHOD OF FINANCING		Exp 2021	Est 2022	Bud 2023	Req 2024	Req 2025
<u>GENERAL REVENUE</u>						
HB 2, 87th Leg, Regular Session		\$(732,426)	\$0	\$0	\$0	\$0
TOTAL,	General Revenue Fund	\$13,934,869	\$15,481,288	\$15,480,730	\$3,931,878	\$3,931,878
TOTAL, ALL	GENERAL REVENUE	\$13,934,869	\$15,481,288	\$15,480,730	\$3,931,878	\$3,931,878
<u>GENERAL REVENUE FUND - DEDICATED</u>						
<u>704</u>	GR Dedicated - Estimated Board Authorized Tuition Increases Account No. 704					
REGULAR APPROPRIATIONS						
Regular Appropriations from MOF Table (2020-21 GAA)		\$828,600	\$0	\$0	\$0	\$0
Regular Appropriations from MOF Table (2022-23 GAA)		\$0	\$828,600	\$828,600	\$0	\$0
BASE ADJUSTMENT						
Adjustment-Revised Receipts		\$274,811	\$159,146	\$0	\$0	\$0

**2.B. Summary of Base Request by Method of Finance**  
88th Regular Session, Agency Submission, Version 1  
Automated Budget and Evaluation System of Texas (ABEST)

8/12/2022 10:16:50AM

Agency code: 765		Agency name: University of Houston - Victoria				
METHOD OF FINANCING		Exp 2021	Est 2022	Bud 2023	Req 2024	Req 2025
<u>GENERAL REVENUE FUND - DEDICATED</u>						
TOTAL,	GR Dedicated - Estimated Board Authorized Tuition Increases Account No. 704					
		\$1,103,411	\$987,746	\$828,600	\$0	\$0
<u>770</u>	GR Dedicated - Estimated Other Educational and General Income Account No. 770					
	REGULAR APPROPRIATIONS					
	Regular Appropriations from MOF Table (2020-21 GAA)	\$4,530,442	\$0	\$0	\$0	\$0
	Regular Appropriations from MOF Table (2022-23 GAA)	\$0	\$5,915,614	\$5,916,277	\$2,039,598	\$2,039,598
	BASE ADJUSTMENT					
	Adjustment-Revised Revenue Receipts	\$357,902	\$(1,575,122)	\$(872,630)	\$0	\$0
	Adjustment to Expended	\$(508,628)	\$404,633	\$440,527	\$0	\$0
TOTAL,	GR Dedicated - Estimated Other Educational and General Income Account No. 770					
		\$4,379,716	\$4,745,125	\$5,484,174	\$2,039,598	\$2,039,598

**2.B. Summary of Base Request by Method of Finance**

8/12/2022 10:16:50AM

88th Regular Session, Agency Submission, Version 1

Automated Budget and Evaluation System of Texas (ABEST)

Agency code: <b>765</b>		Agency name: <b>University of Houston - Victoria</b>				
<b>METHOD OF FINANCING</b>		<b>Exp 2021</b>	<b>Est 2022</b>	<b>Bud 2023</b>	<b>Req 2024</b>	<b>Req 2025</b>
<b>TOTAL GENERAL REVENUE FUND - DEDICATED - 704, 708 &amp; 770</b>						
		\$5,483,127	\$5,732,871	\$6,312,774	\$2,039,598	\$2,039,598
<b>TOTAL, ALL GENERAL REVENUE FUND - DEDICATED</b>		<b>\$5,483,127</b>	<b>\$5,732,871</b>	<b>\$6,312,774</b>	<b>\$2,039,598</b>	<b>\$2,039,598</b>
<b>TOTAL, GR &amp; GR-DEDICATED FUNDS</b>		<b>\$19,417,996</b>	<b>\$21,214,159</b>	<b>\$21,793,504</b>	<b>\$5,971,476</b>	<b>\$5,971,476</b>
<b><u>OTHER FUNDS</u></b>						
<b><u>599</u> Economic Stabilization Fund</b>						
<i>SUPPLEMENTAL, SPECIAL OR EMERGENCY APPROPRIATIONS</i>						
Unexpended Balance - SB 500, 86th Leg, Regular Session, Sec 39, P.20						
		\$949,010	\$0	\$0	\$0	\$0
<b>Comments:</b> Economic Stabalization Fund						
<i>LAPSED APPROPRIATIONS</i>						
SB 500, 86th Leg, Regular Session						
		\$(476,779)	\$0	\$0	\$0	\$0
<b>Comments:</b> Lapsed Appropriations						
<b>TOTAL, Economic Stabilization Fund</b>		<b>\$472,231</b>	<b>\$0</b>	<b>\$0</b>	<b>\$0</b>	<b>\$0</b>

**802 License Plate Trust Fund Account No. 0802, estimated**

**2.B. Summary of Base Request by Method of Finance**

8/12/2022 10:16:50AM

88th Regular Session, Agency Submission, Version 1

Automated Budget and Evaluation System of Texas (ABEST)

Agency code:	<b>765</b>	Agency name:	<b>University of Houston - Victoria</b>			
METHOD OF FINANCING		Exp 2021	Est 2022	Bud 2023	Req 2024	Req 2025
<b><u>OTHER FUNDS</u></b>						
<i>REGULAR APPROPRIATIONS</i>						
Regular Appropriations from MOF Table (2020-21 GAA)						
		\$899	\$0	\$0	\$0	\$0
Regular Appropriations from MOF Table (2022-23 GAA)						
		\$0	\$899	\$899	\$899	\$899
<i>TRANSFERS</i>						
86th Leg., Art. III, P.258, Special Provisions Relating Only To State Agencies of Higher Education, Sec. 4						
		\$513	\$0	\$0	\$0	\$0
<b>Comments:</b> License Plate Trust Fund, AY21, FY21 transfers in from UHSA						
87th Leg., Art. III, P.266, Special Provisions Relating Only To State Agencies of Higher Education, Sec. 4						
		\$0	\$473	\$0	\$0	\$0
<b>Comments:</b> License Plate Fund, AY22, FY22 transfers in from UHSA.						
<i>UNEXPENDED BALANCES AUTHORITY</i>						
86th Leg., Article III, P.277 Special Provisions Relating Only To Institutions of Higher Education, Sec.57						
		\$1,045	\$0	\$0	\$0	\$0



**2.B. Summary of Base Request by Method of Finance**

8/12/2022 10:16:50AM

88th Regular Session, Agency Submission, Version 1

Automated Budget and Evaluation System of Texas (ABEST)

Agency code: **765** Agency name: **University of Houston - Victoria**

METHOD OF FINANCING	Exp 2021	Est 2022	Bud 2023	Req 2024	Req 2025
---------------------	----------	----------	----------	----------	----------

**OTHER FUNDS**

**Comments:** License Plate Trust Fund. AY20, FY20 unexpended balance roll forward to AY21.

87th Leg., Article III, P.288 Special Provisions Relating Only To Institutions of Higher Education, Sec.55

\$(63)	\$0	\$0	\$0	\$0
--------	-----	-----	-----	-----

**Comments:** License Plate Trust Fund. AY21, FY21 unexpended balance roll to AY22.

87th Leg., Article III, P.288 Special Provisions Relating Only To Institutions of Higher Education, Sec.55

\$0	\$63	\$0	\$0	\$0
-----	------	-----	-----	-----

**Comments:** License Plate Trust Fund, AY21, FY21 unexpended balance roll forward to AY22

*BASE ADJUSTMENT*

Revised Revenue Receipts AY21

\$(894)	\$0	\$0	\$0	\$0
---------	-----	-----	-----	-----

**Comments:** License Plate Trust Fund AY21

Revised Revenue Receipts AY22

\$0	\$(899)	\$0	\$0	\$0
-----	---------	-----	-----	-----

**Comments:** License Plate Trust Fund AY22

**2.B. Summary of Base Request by Method of Finance**

8/12/2022 10:16:50AM

88th Regular Session, Agency Submission, Version 1

Automated Budget and Evaluation System of Texas (ABEST)

Agency code: <b>765</b>		Agency name: <b>University of Houston - Victoria</b>				
<b>METHOD OF FINANCING</b>		<b>Exp 2021</b>	<b>Est 2022</b>	<b>Bud 2023</b>	<b>Req 2024</b>	<b>Req 2025</b>
<b><u>OTHER FUNDS</u></b>						
<b>TOTAL,</b>	<b>License Plate Trust Fund Account No. 0802, estimated</b>					
		<b>\$1,500</b>	<b>\$536</b>	<b>\$899</b>	<b>\$899</b>	<b>\$899</b>
<b>TOTAL, ALL</b>	<b>OTHER FUNDS</b>					
		<b>\$473,731</b>	<b>\$536</b>	<b>\$899</b>	<b>\$899</b>	<b>\$899</b>
<b>GRAND TOTAL</b>		<b>\$19,891,727</b>	<b>\$21,214,695</b>	<b>\$21,794,403</b>	<b>\$5,972,375</b>	<b>\$5,972,375</b>

**2.B. Summary of Base Request by Method of Finance**

8/12/2022 10:16:50AM

88th Regular Session, Agency Submission, Version 1

Automated Budget and Evaluation System of Texas (ABEST)

Agency code:	<b>765</b>	Agency name:	<b>University of Houston - Victoria</b>			
METHOD OF FINANCING		Exp 2021	Est 2022	Bud 2023	Req 2024	Req 2025
<b>FULL-TIME-EQUIVALENT POSITIONS</b>						
REGULAR APPROPRIATIONS						
Regular Appropriations from MOF Table (2020-21 GAA)		274.0	0.0	0.0	254.1	254.1
Regular Appropriations from MOF Table (2022-23 GAA)		0.0	250.2	250.2	0.0	0.0
RIDER APPROPRIATION						
Art IX, Sec 17.47, 87th Leg Reg Session, Additional Funding for Formula Funding (2022-23 GAA)		0.0	17.0	17.0	0.0	0.0
UNAUTHORIZED NUMBER OVER (BELOW) CAP						
Unauthorized Number Over (Below) Cap		(35.1)	0.0	0.0	0.0	0.0
<b>Comments:</b> The variance in FY2021 is due to a combination of the 5% reduction in state funding and the impact of COVID-19 on the university's operations resulting in hiring freezes.						
Unauthorized Number Over (Below) Cap		0.0	(21.3)	0.0	0.0	0.0
<b>Comments:</b> The variance is due to a decrease in student enrollment resulting in hiring freezes.						
Unauthorized Number Over (Below) Cap		0.0	0.0	(19.3)	0.0	0.0
<b>Comments:</b> The variance is due to a decrease in student enrollment resulting in hiring freezes.						
<b>TOTAL, ADJUSTED FTES</b>		<b>238.9</b>	<b>245.9</b>	<b>247.9</b>	<b>254.1</b>	<b>254.1</b>

**2.B. Summary of Base Request by Method of Finance**

8/12/2022 10:16:50AM

88th Regular Session, Agency Submission, Version 1

Automated Budget and Evaluation System of Texas (ABEST)

Agency code:	<b>765</b>	Agency name:	<b>University of Houston - Victoria</b>			
<b>METHOD OF FINANCING</b>		<b>Exp 2021</b>	<b>Est 2022</b>	<b>Bud 2023</b>	<b>Req 2024</b>	<b>Req 2025</b>
<b>NUMBER OF 100% FEDERALLY FUNDED FTEs</b>		<b>0.0</b>	<b>0.0</b>	<b>0.0</b>	<b>0.0</b>	<b>0.0</b>

**2.C. Summary of Base Request by Object of Expense**

8/12/2022 10:16:50AM

88th Regular Session, Agency Submission, Version 1  
Automated Budget and Evaluation System of Texas (ABEST)**765 University of Houston - Victoria**

<b>OBJECT OF EXPENSE</b>	<b>Exp 2021</b>	<b>Est 2022</b>	<b>Bud 2023</b>	<b>BL 2024</b>	<b>BL 2025</b>
1001 SALARIES AND WAGES	\$5,564,868	\$6,693,774	\$6,485,250	\$3,894,940	\$3,894,940
1002 OTHER PERSONNEL COSTS	\$1,188,939	\$1,579,773	\$1,630,520	\$1,331,363	\$1,331,363
1005 FACULTY SALARIES	\$11,622,255	\$11,908,077	\$12,318,649	\$0	\$0
2002 FUELS AND LUBRICANTS	\$844	\$0	\$0	\$0	\$0
2004 UTILITIES	\$245,545	\$350,000	\$607,512	\$0	\$0
2005 TRAVEL	\$0	\$0	\$0	\$0	\$0
2009 OTHER OPERATING EXPENSE	\$1,249,254	\$676,671	\$746,072	\$746,072	\$746,072
5000 CAPITAL EXPENDITURES	\$20,022	\$6,400	\$6,400	\$0	\$0
<b>OOE Total (Excluding Riders)</b>	<b>\$19,891,727</b>	<b>\$21,214,695</b>	<b>\$21,794,403</b>	<b>\$5,972,375</b>	<b>\$5,972,375</b>
<b>OOE Total (Riders)</b>					
<b>Grand Total</b>	<b>\$19,891,727</b>	<b>\$21,214,695</b>	<b>\$21,794,403</b>	<b>\$5,972,375</b>	<b>\$5,972,375</b>

**2.D. Summary of Base Request Objective Outcomes**  
88th Regular Session, Agency Submission, Version 1  
Automated Budget and Evaluation system of Texas (ABEST)

8/12/2022 10:16:51AM

765 University of Houston - Victoria					
Goal/ Objective / Outcome	Exp 2021	Est 2022	Bud 2023	BL 2024	BL 2025
1 Provide Instructional and Operations Support					
1 Provide Instructional and Operations Support					
<b>KEY</b> <b>1   % 1st-time, Full-time, Degree-seeking Frsh Earn Degree in 6 Yrs</b>					
	24.10%	23.10%	25.60%	28.10%	30.60%
<b>2   % 1st-time, Full-time, Degree-seeking White Frsh Earn Degree in 6 Yrs</b>					
	20.00%	30.00%	32.50%	35.00%	37.50%
<b>3   % 1st-time, Full-time, Degree-seeking Hisp Frsh Earn Degree in 6 Yrs</b>					
	29.00%	24.20%	26.70%	29.20%	31.70%
<b>4   % 1st-time, Full-time, Degree-seeking Black Frsh Earn Degree in 6 Yrs</b>					
	17.10%	14.50%	17.00%	19.50%	22.00%
<b>5   % 1st-time, Full-time, Degree-seeking Other Frshmn Earn Deg in 6 Yrs</b>					
	23.80%	17.40%	19.90%	22.40%	24.90%
<b>KEY</b> <b>6   % 1st-time, Full-time, Degree-seeking Frsh Earn Degree in 4 Yrs</b>					
	10.10%	9.70%	12.20%	14.70%	17.20%
<b>7   % 1st-time, Full-time, Degree-seeking White Frsh Earn Degree in 4 Yrs</b>					
	6.00%	11.70%	14.20%	16.70%	19.20%
<b>8   % 1st-time, Full-time, Degree-seeking Hisp Frsh Earn Degree in 4 Yrs</b>					
	14.50%	10.20%	12.70%	15.20%	17.70%
<b>9   % 1st-time, Full-time, Degree-seeking Black Frsh Earn Degree in 4 Yrs</b>					
	1.40%	4.80%	7.30%	9.80%	12.30%
<b>10   % 1st-time, Full-time, Degree-seeking Other Frsh Earn Degree in 4 Yrs</b>					
	19.00%	13.00%	15.50%	18.00%	20.50%
<b>KEY</b> <b>11 Persistence Rate 1st-time, Full-time, Degree-seeking Frsh after 1 Yr</b>					
	62.90%	56.20%	58.70%	61.20%	63.70%
<b>12 Persistence 1st-time, Full-time, Degree-seeking White Frsh after 1 Yr</b>					
	54.00%	65.00%	67.50%	70.00%	72.50%

**2.D. Summary of Base Request Objective Outcomes**  
88th Regular Session, Agency Submission, Version 1  
Automated Budget and Evaluation system of Texas (ABEST)

8/12/2022 10:16:51AM

<b>765 University of Houston - Victoria</b>					
<i>Goal/ Objective / Outcome</i>	<b>Exp 2021</b>	<b>Est 2022</b>	<b>Bud 2023</b>	<b>BL 2024</b>	<b>BL 2025</b>
<b>13 Persistence 1st-time, Full-time, Degree-seeking Hisp Frsh after 1 Yr</b>	68.30%	56.70%	59.20%	61.70%	64.20%
<b>14 Persistence 1st-time, Full-time, Degree-seeking Black Frsh after 1 Yr</b>	62.90%	45.20%	47.70%	50.20%	52.70%
<b>15 Persistence 1st-time, Full-time, Degree-seeking Other Frsh after 1 Yr</b>	47.60%	65.20%	67.70%	70.20%	72.70%
<b>16 Percent of Semester Credit Hours Completed</b>	85.20%	87.70%	90.20%	92.70%	95.00%
<b>KEY 17 Certification Rate of Teacher Education Graduates</b>	91.00%	93.50%	96.00%	97.00%	98.00%
<b>18 Percentage of Underprepared Students Satisfy TSI Obligation in Math</b>	63.90%	66.40%	68.90%	71.40%	73.90%
<b>19 Percentage of Underprepared Students Satisfy TSI Obligation in Writing</b>	87.50%	90.00%	92.50%	93.50%	95.00%
<b>20 Percentage of Underprepared Students Satisfy TSI Obligation in Reading</b>	88.00%	90.50%	93.00%	95.00%	97.00%
<b>KEY 21 % of Baccalaureate Graduates Who Are 1st Generation College Graduates</b>	52.30%	54.80%	57.30%	59.80%	62.30%
<b>KEY 22 Percent of Transfer Students Who Graduate within 4 Years</b>	52.80%	55.30%	57.80%	60.30%	62.80%
<b>KEY 23 Percent of Transfer Students Who Graduate within 2 Years</b>	22.40%	24.90%	27.40%	29.90%	32.40%
<b>KEY 24 % Lower Division Semester Credit Hours Taught by Tenured/Tenure-Track</b>	60.10%	62.60%	65.10%	67.60%	70.10%
<b>KEY 30 Dollar Value of External or Sponsored Research Funds (in Millions)</b>	0.08	0.09	0.10	0.10	0.10

**2.D. Summary of Base Request Objective Outcomes**

8/12/2022 10:16:51AM

88th Regular Session, Agency Submission, Version 1  
Automated Budget and Evaluation system of Texas (ABEST)**765 University of Houston - Victoria**

<i>Goal/ Objective / Outcome</i>	<b>Exp 2021</b>	<b>Est 2022</b>	<b>Bud 2023</b>	<b>BL 2024</b>	<b>BL 2025</b>
<b>32 External Research Funds As Percentage Appropriated for Research</b>	77,675.00%	85,000.00%	100,000.00%	100,000.00%	100,000.00%



**2.E. Summary of Exceptional Items Request**  
88th Regular Session, Agency Submission, Version 1  
Automated Budget and Evaluation System of Texas (ABEST)

DATE: 8/12/2022  
TIME : 10:16:51AM

Agency code: 765

Agency name: University of Houston - Victoria

Priority	Item	2024			2025			Biennium	
		GR and GR/GR Dedicated	All Funds	FTEs	GR and GR Dedicated	All Funds	FTEs	GR and GR Dedicated	All Funds
1	COVID-19 Continued	\$3,520,671	\$3,520,671	35.0	\$3,520,671	\$3,520,671	35.0	\$7,041,342	\$7,041,342
2	CPC For Mental Health	\$826,090	\$826,090	5.0	\$426,795	\$426,795	5.0	\$1,252,885	\$1,252,885
<b>Total, Exceptional Items Request</b>		<b>\$4,346,761</b>	<b>\$4,346,761</b>	<b>40.0</b>	<b>\$3,947,466</b>	<b>\$3,947,466</b>	<b>40.0</b>	<b>\$8,294,227</b>	<b>\$8,294,227</b>
<b>Method of Financing</b>									
	General Revenue	\$4,346,761	\$4,346,761		\$3,947,466	\$3,947,466		\$8,294,227	\$8,294,227
	General Revenue - Dedicated								
	Federal Funds								
	Other Funds								
		<b>\$4,346,761</b>	<b>\$4,346,761</b>		<b>\$3,947,466</b>	<b>\$3,947,466</b>		<b>\$8,294,227</b>	<b>\$8,294,227</b>
<b>Full Time Equivalent Positions</b>				<b>40.0</b>				<b>40.0</b>	
<b>Number of 100% Federally Funded FTEs</b>				<b>0.0</b>				<b>0.0</b>	

**2.F. Summary of Total Request by Strategy**  
88th Regular Session, Agency Submission, Version 1  
Automated Budget and Evaluation System of Texas (ABEST)

DATE : 8/12/2022  
TIME : 10:16:51AM

Agency code: 765      Agency name: University of Houston - Victoria

Goal/Objective/STRATEGY	Base 2024	Base 2025	Exceptional 2024	Exceptional 2025	Total Request 2024	Total Request 2025
<b>1</b> Provide Instructional and Operations Support						
<b>1</b> <i>Provide Instructional and Operations Support</i>						
<b>1</b> OPERATIONS SUPPORT	\$0	\$0	\$0	\$0	\$0	\$0
<b>3</b> STAFF GROUP INSURANCE PREMIUMS	1,331,363	1,331,363	0	0	1,331,363	1,331,363
<b>4</b> WORKERS' COMPENSATION INSURANCE	36,938	36,938	0	0	36,938	36,938
<b>6</b> TEXAS PUBLIC EDUCATION GRANTS	708,235	708,235	0	0	708,235	708,235
<b>TOTAL, GOAL 1</b>	<b>\$2,076,536</b>	<b>\$2,076,536</b>	<b>\$0</b>	<b>\$0</b>	<b>\$2,076,536</b>	<b>\$2,076,536</b>
<b>2</b> Provide Infrastructure Support						
<b>1</b> <i>Provide Operation and Maintenance of E&amp;G Space</i>						
<b>1</b> E&G SPACE SUPPORT	0	0	0	0	0	0
<b>TOTAL, GOAL 2</b>	<b>\$0</b>	<b>\$0</b>	<b>\$0</b>	<b>\$0</b>	<b>\$0</b>	<b>\$0</b>

**2.F. Summary of Total Request by Strategy**  
88th Regular Session, Agency Submission, Version 1  
Automated Budget and Evaluation System of Texas (ABEST)

DATE : 8/12/2022  
TIME : 10:16:51AM

Agency code: 765      Agency name: University of Houston - Victoria

Goal/Objective/STRATEGY	Base 2024	Base 2025	Exceptional 2024	Exceptional 2025	Total Request 2024	Total Request 2025
<b>3</b> Provide Non-formula Support						
<b>1</b> <i>INSTRUCTIONAL SUPPORT</i>						
<b>1</b> MASTER'S DEGREE IN NURSING	\$0	\$0	\$0	\$0	\$0	\$0
<b>2</b> EXPANSION FUNDING	1,223,829	1,223,829	0	0	1,223,829	1,223,829
<b>3</b> <i>Public Service</i>						
<b>1</b> CENTER FOR REGIONAL OUTREACH	0	0	0	0	0	0
<b>2</b> SMALL BUSINESS DEVELOPMENT CENTER	153,176	153,176	0	0	153,176	153,176
<b>4</b> <i>INSTITUTIONAL SUPPORT</i>						
<b>1</b> INSTITUTIONAL ENHANCEMENT	2,518,834	2,518,834	0	0	2,518,834	2,518,834
<b>5</b> <i>EXCEPTONAL ITEM REQUEST</i>						
<b>1</b> EXCEPTIONAL ITEM REQUEST	0	0	4,346,761	3,947,466	4,346,761	3,947,466
<b>TOTAL, GOAL 3</b>	<b>\$3,895,839</b>	<b>\$3,895,839</b>	<b>\$4,346,761</b>	<b>\$3,947,466</b>	<b>\$8,242,600</b>	<b>\$7,843,305</b>

**2.F. Summary of Total Request by Strategy**  
88th Regular Session, Agency Submission, Version 1  
Automated Budget and Evaluation System of Texas (ABEST)

DATE : 8/12/2022  
TIME : 10:16:51AM

Agency code: 765	Agency name: University of Houston - Victoria					
Goal/Objective/STRATEGY	Base 2024	Base 2025	Exceptional 2024	Exceptional 2025	Total Request 2024	Total Request 2025
6 Research Funds						
3 Comprehensive Research Fund						
1 COMPREHENSIVE RESEARCH FUND	\$0	\$0	\$0	\$0	\$0	\$0
TOTAL, GOAL 6	\$0	\$0	\$0	\$0	\$0	\$0
TOTAL, AGENCY STRATEGY REQUEST	\$5,972,375	\$5,972,375	\$4,346,761	\$3,947,466	\$10,319,136	\$9,919,841
TOTAL, AGENCY RIDER APPROPRIATIONS REQUEST						
GRAND TOTAL, AGENCY REQUEST	\$5,972,375	\$5,972,375	\$4,346,761	\$3,947,466	\$10,319,136	\$9,919,841

**2.F. Summary of Total Request by Strategy**  
88th Regular Session, Agency Submission, Version 1  
Automated Budget and Evaluation System of Texas (ABEST)

DATE : 8/12/2022  
TIME : 10:16:51AM

Agency code: 765		Agency name: University of Houston - Victoria					
Goal/Objective/STRATEGY		Base 2024	Base 2025	Exceptional 2024	Exceptional 2025	Total Request 2024	Total Request 2025
General Revenue Funds:							
1	General Revenue Fund	\$3,931,878	\$3,931,878	\$4,346,761	\$3,947,466	\$8,278,639	\$7,879,344
		\$3,931,878	\$3,931,878	\$4,346,761	\$3,947,466	\$8,278,639	\$7,879,344
General Revenue Dedicated Funds:							
704	Est Bd Authorized Tuition Inc	0	0	0	0	0	0
770	Est. Other Educational & General	2,039,598	2,039,598	0	0	2,039,598	2,039,598
		\$2,039,598	\$2,039,598	\$0	\$0	\$2,039,598	\$2,039,598
Other Funds:							
599	Economic Stabilization Fund	0	0	0	0	0	0
802	Lic Plate Trust Fund No. 0802, est	899	899	0	0	899	899
		\$899	\$899	\$0	\$0	\$899	\$899
TOTAL, METHOD OF FINANCING		\$5,972,375	\$5,972,375	\$4,346,761	\$3,947,466	\$10,319,136	\$9,919,841
FULL TIME EQUIVALENT POSITIONS		247.9	247.9	40.0	40.0	287.9	287.9

**2.G. Summary of Total Request Objective Outcomes**  
88th Regular Session, Agency Submission, Version 1  
Automated Budget and Evaluation system of Texas (ABEST)

Date : 8/12/2022  
Time: 10:16:52AM

Agency code: 765                      Agency name: University of Houston - Victoria

Goal/ Objective / Outcome

		BL 2024	BL 2025	Excp 2024	Excp 2025	Total Request 2024	Total Request 2025
1	Provide Instructional and Operations Support						
1	Provide Instructional and Operations Support						
<b>KEY</b>	<b>1 % 1st-time, Full-time, Degree-seeking Frsh Earn Degree in 6 Yrs</b>						
		28.10%	30.60%			28.10%	30.60%
	<b>2 % 1st-time, Full-time, Degree-seeking White Frsh Earn Degree in 6 Yrs</b>						
		35.00%	37.50%			35.00%	37.50%
	<b>3 % 1st-time, Full-time, Degree-seeking Hisp Frsh Earn Degree in 6 Yrs</b>						
		29.20%	31.70%			29.20%	31.70%
	<b>4 % 1st-time, Full-time, Degree-seeking Black Frsh Earn Degree in 6 Yrs</b>						
		19.50%	22.00%			19.50%	22.00%
	<b>5 % 1st-time, Full-time, Degree-seeking Other Frshmn Earn Deg in 6 Yrs</b>						
		22.40%	24.90%			22.40%	24.90%
<b>KEY</b>	<b>6 % 1st-time, Full-time, Degree-seeking Frsh Earn Degree in 4 Yrs</b>						
		14.70%	17.20%			14.70%	17.20%
	<b>7 % 1st-time, Full-time, Degree-seeking White Frsh Earn Degree in 4 Yrs</b>						
		16.70%	19.20%			16.70%	19.20%
	<b>8 % 1st-time, Full-time, Degree-seeking Hisp Frsh Earn Degree in 4 Yrs</b>						
		15.20%	17.70%			15.20%	17.70%

**2.G. Summary of Total Request Objective Outcomes**  
88th Regular Session, Agency Submission, Version 1  
Automated Budget and Evaluation system of Texas (ABEST)

Date : 8/12/2022  
Time: 10:16:52AM

Agency code: 765                      Agency name: University of Houston - Victoria

Goal/ Objective / Outcome

	BL 2024	BL 2025	Excp 2024	Excp 2025	Total Request 2024	Total Request 2025
<b>9 % 1st-time, Full-time, Degree-seeking Black Frsh Earn Degree in 4 Yrs</b>						
	9.80%	12.30%			9.80%	12.30%
<b>10 % 1st-time, Full-time, Degree-seeking Other Frsh Earn Degree in 4 Yrs</b>						
	18.00%	20.50%			18.00%	20.50%
<b>KEY 11 Persistence Rate 1st-time, Full-time, Degree-seeking Frsh after 1 Yr</b>						
	61.20%	63.70%			61.20%	63.70%
<b>12 Persistence 1st-time, Full-time, Degree-seeking White Frsh after 1 Yr</b>						
	70.00%	72.50%			70.00%	72.50%
<b>13 Persistence 1st-time, Full-time, Degree-seeking Hisp Frsh after 1 Yr</b>						
	61.70%	64.20%			61.70%	64.20%
<b>14 Persistence 1st-time, Full-time, Degree-seeking Black Frsh after 1 Yr</b>						
	50.20%	52.70%			50.20%	52.70%
<b>15 Persistence 1st-time, Full-time, Degree-seeking Other Frsh after 1 Yr</b>						
	70.20%	72.70%			70.20%	72.70%
<b>16 Percent of Semester Credit Hours Completed</b>						
	92.70%	95.00%			92.70%	95.00%
<b>KEY 17 Certification Rate of Teacher Education Graduates</b>						
	97.00%	98.00%			97.00%	98.00%

**2.G. Summary of Total Request Objective Outcomes**  
88th Regular Session, Agency Submission, Version 1  
Automated Budget and Evaluation system of Texas (ABEST)

Date : 8/12/2022  
Time: 10:16:52AM

Agency code: 765

Agency name: University of Houston - Victoria

Goal/ Objective / Outcome

	BL 2024	BL 2025	Excp 2024	Excp 2025	Total Request 2024	Total Request 2025
<b>18 Percentage of Underprepared Students Satisfy TSI Obligation in Math</b>						
	71.40%	73.90%			71.40%	73.90%
<b>19 Percentage of Underprepared Students Satisfy TSI Obligation in Writing</b>						
	93.50%	95.00%			93.50%	95.00%
<b>20 Percentage of Underprepared Students Satisfy TSI Obligation in Reading</b>						
	95.00%	97.00%			95.00%	97.00%
<b>KEY 21 % of Baccalaureate Graduates Who Are 1st Generation College Graduates</b>						
	59.80%	62.30%			59.80%	62.30%
<b>KEY 22 Percent of Transfer Students Who Graduate within 4 Years</b>						
	60.30%	62.80%			60.30%	62.80%
<b>KEY 23 Percent of Transfer Students Who Graduate within 2 Years</b>						
	29.90%	32.40%			29.90%	32.40%
<b>KEY 24 % Lower Division Semester Credit Hours Taught by Tenured/Tenure-Track</b>						
	67.60%	70.10%			67.60%	70.10%
<b>KEY 30 Dollar Value of External or Sponsored Research Funds (in Millions)</b>						
	0.10	0.10			0.10	0.10
<b>32 External Research Funds As Percentage Appropriated for Research</b>						
	100,000.00%	100,000.00%			100,000.00%	100,000.00%



**765 University of Houston - Victoria**

GOAL: 1 Provide Instructional and Operations Support  
OBJECTIVE: 1 Provide Instructional and Operations Support  
STRATEGY: 1 Operations Support

Service Categories:

Service: 19 Income: A.2 Age: B.3

CODE	DESCRIPTION	Exp 2021	Est 2022	Bud 2023	BL 2024 <sup>(1)</sup>	BL 2025 <sup>(1)</sup>
<b>Output Measures:</b>						
1	Number of Undergraduate Degrees Awarded	835.00	951.00	975.00	999.00	1,024.00
2	Number of Minority Graduates	545.00	611.00	626.00	642.00	658.00
3	Number of Underprepared Students Who Satisfy TSI Obligations in Math	156.00	160.00	164.00	168.00	172.00
4	Number of Underprepared Students Who Satisfy TSI Obligation in Writing	222.00	228.00	234.00	240.00	246.00
5	Number of Underprepared Students Who Satisfy TSI Obligation in Reading	241.00	380.00	390.00	400.00	410.00
6	Number of Two-Year College Transfers Who Graduate	390.00	400.00	410.00	420.00	431.00
<b>Efficiency Measures:</b>						
KEY 1	Administrative Cost As a Percent of Operating Budget	8.65 %	9.34 %	9.34 %	9.34 %	9.34 %
KEY 2	Avg Cost of Resident Undergraduate Tuition and Fees for 15 SCH	4,327.00	4,495.00	4,495.00	4,495.00	4,495.00
<b>Explanatory/Input Measures:</b>						
1	Student/Faculty Ratio	19.00	19.00	19.00	19.00	19.00
2	Number of Minority Students Enrolled	2,609.00	2,769.00	2,838.00	2,909.00	2,982.00
3	Number of Community College Transfers Enrolled	1,336.00	1,370.00	1,405.00	1,440.00	1,476.00
4	Number of Semester Credit Hours Completed	87,500.00	73,717.00	75,560.00	77,449.00	79,385.00

(1) - Formula funded strategies are not requested in 2024-25 because amounts are not determined by institutions.

**765 University of Houston - Victoria**

GOAL: 1 Provide Instructional and Operations Support  
OBJECTIVE: 1 Provide Instructional and Operations Support  
STRATEGY: 1 Operations Support

Service Categories:

Service: 19 Income: A.2 Age: B.3

CODE	DESCRIPTION	Exp 2021	Est 2022	Bud 2023	BL 2024 <sup>(1)</sup>	BL 2025 <sup>(1)</sup>
	5 Number of Semester Credit Hours	93,000.00	81,726.00	83,769.00	85,863.00	88,060.00
	6 Number of Students Enrolled as of the Twelfth Class Day	4,900.00	4,198.00	4,408.00	4,628.00	4,859.00
KEY	7 Average Student Loan Debt	30,771.00	25,868.00	22,414.00	19,405.00	19,405.00
KEY	8 Percent of Students with Student Loan Debt	43.50 %	53.30 %	65.60 %	79.60 %	79.60 %
	9 Average Financial Aid Award Per Full-Time Student	10,928.00	11,313.00	11,625.00	11,947.00	11,947.00
KEY	10 Percent of Full-Time Students Receiving Financial Aid	95.00 %	95.00 %	95.00 %	95.00 %	95.00 %
<b>Objects of Expense:</b>						
1001	SALARIES AND WAGES	\$5,217,204	\$6,325,424	\$6,110,783	\$0	\$0
1002	OTHER PERSONNEL COSTS	\$185,464	\$274,326	\$299,157	\$0	\$0
1005	FACULTY SALARIES	\$11,622,255	\$11,908,077	\$12,318,649	\$0	\$0
2009	OTHER OPERATING EXPENSE	\$3,583	\$491	\$0	\$0	\$0
<b>TOTAL, OBJECT OF EXPENSE</b>		<b>\$17,028,506</b>	<b>\$18,508,318</b>	<b>\$18,728,589</b>	<b>\$0</b>	<b>\$0</b>
<b>Method of Financing:</b>						
1	General Revenue Fund	\$13,276,789	\$14,734,006	\$14,462,764	\$0	\$0
<b>SUBTOTAL, MOF (GENERAL REVENUE FUNDS)</b>		<b>\$13,276,789</b>	<b>\$14,734,006</b>	<b>\$14,462,764</b>	<b>\$0</b>	<b>\$0</b>

**Method of Financing:**

(1) - Formula funded strategies are not requested in 2024-25 because amounts are not determined by institutions.

**765 University of Houston - Victoria**

GOAL: 1 Provide Instructional and Operations Support  
OBJECTIVE: 1 Provide Instructional and Operations Support  
STRATEGY: 1 Operations Support

Service Categories:

Service: 19 Income: A.2 Age: B.3

CODE	DESCRIPTION	Exp 2021	Est 2022	Bud 2023	BL 2024 <sup>(1)</sup>	BL 2025 <sup>(1)</sup>
704	Est Bd Authorized Tuition Inc	\$1,103,411	\$987,746	\$828,600	\$0	\$0
770	Est. Other Educational & General	\$2,648,306	\$2,786,566	\$3,437,225	\$0	\$0
<b>SUBTOTAL, MOF (GENERAL REVENUE FUNDS - DEDICATED)</b>		<b>\$3,751,717</b>	<b>\$3,774,312</b>	<b>\$4,265,825</b>	<b>\$0</b>	<b>\$0</b>
<b>TOTAL, METHOD OF FINANCE (INCLUDING RIDERS)</b>					<b>\$0</b>	<b>\$0</b>
<b>TOTAL, METHOD OF FINANCE (EXCLUDING RIDERS)</b>		<b>\$17,028,506</b>	<b>\$18,508,318</b>	<b>\$18,728,589</b>	<b>\$0</b>	<b>\$0</b>
<b>FULL TIME EQUIVALENT POSITIONS:</b>		<b>229.5</b>	<b>237.4</b>	<b>239.4</b>	<b>239.4</b>	<b>239.4</b>

**STRATEGY DESCRIPTION AND JUSTIFICATION:**

The Instruction and Operations Formula provides funding for faculty salaries, departmental operating expense, library, instructional administration, research enhancement, student services and institutional support. The funds are distributed on a weighted semester credit hour basis. The rate per weighted semester credit hour is established by the Legislature each biennium. UHV is requesting an increase in FTE on Schedule 7 in order to satisfy academic and student services needs during downward expansion.

**EXTERNAL/INTERNAL FACTORS IMPACTING STRATEGY:**

(1) - Formula funded strategies are not requested in 2024-25 because amounts are not determined by institutions.

**765 University of Houston - Victoria**

GOAL: 1 Provide Instructional and Operations Support  
OBJECTIVE: 1 Provide Instructional and Operations Support  
STRATEGY: 1 Operations Support

Service Categories:

Service: 19 Income: A.2 Age: B.3

CODE	DESCRIPTION	Exp 2021	Est 2022	Bud 2023	BL 2024 <sup>(1)</sup>	BL 2025 <sup>(1)</sup>
------	-------------	----------	----------	----------	------------------------	------------------------

A funding reduction will have a negative effect on instruction and support for critical programs and priorities which are needed to meet the challenges of a rapid increase in student enrollments.

(1)- Formula funded strategies are not requested in 2022-23 because amounts are not determined by institutions.

**EXPLANATION OF BIENNIAL CHANGE (includes Rider amounts):**

<u>STRATEGY BIENNIAL TOTAL - ALL FUNDS</u>		<u>BIENNIAL CHANGE</u>	<u>EXPLANATION OF BIENNIAL CHANGE</u>	
<u>Base Spending (Est 2022 + Bud 2023)</u>	<u>Baseline Request (BL 2024 + BL 2025)</u>		<u>\$ Amount</u>	<u>Explanation(s) of Amount (must specify MOFs and FTEs)</u>
\$37,236,907	\$0	\$(37,236,907)	\$(29,189,470)	General revenue fund- The rate per weighted semester credit hours is established by the legislature each biennium
			\$(6,231,091)	Estimated other Education and General Income
			\$(1,816,346)	Board Authorized Tuition
			<u>\$(37,236,907)</u>	<b>Total of Explanation of Biennial Change</b>

(1) - Formula funded strategies are not requested in 2024-25 because amounts are not determined by institutions.

**765 University of Houston - Victoria**

GOAL: 1 Provide Instructional and Operations Support  
OBJECTIVE: 1 Provide Instructional and Operations Support  
STRATEGY: 3 Staff Group Insurance Premiums

Service Categories:

Service: 06 Income: A.2 Age: B.3

CODE	DESCRIPTION	Exp 2021	Est 2022	Bud 2023	BL 2024	BL 2025
<b>Objects of Expense:</b>						
1002	OTHER PERSONNEL COSTS	\$1,003,475	\$1,304,499	\$1,331,363	\$1,331,363	\$1,331,363
<b>TOTAL, OBJECT OF EXPENSE</b>		<b>\$1,003,475</b>	<b>\$1,304,499</b>	<b>\$1,331,363</b>	<b>\$1,331,363</b>	<b>\$1,331,363</b>
<b>Method of Financing:</b>						
770	Est. Other Educational & General	\$1,003,475	\$1,304,499	\$1,331,363	\$1,331,363	\$1,331,363
<b>SUBTOTAL, MOF (GENERAL REVENUE FUNDS - DEDICATED)</b>		<b>\$1,003,475</b>	<b>\$1,304,499</b>	<b>\$1,331,363</b>	<b>\$1,331,363</b>	<b>\$1,331,363</b>
<b>TOTAL, METHOD OF FINANCE (INCLUDING RIDERS)</b>					<b>\$1,331,363</b>	<b>\$1,331,363</b>
<b>TOTAL, METHOD OF FINANCE (EXCLUDING RIDERS)</b>		<b>\$1,003,475</b>	<b>\$1,304,499</b>	<b>\$1,331,363</b>	<b>\$1,331,363</b>	<b>\$1,331,363</b>

**FULL TIME EQUIVALENT POSITIONS:**

**STRATEGY DESCRIPTION AND JUSTIFICATION:**

This strategy is to provide proportional share of staff group insurance premiums paid from Other Educational and General funds.

**EXTERNAL/INTERNAL FACTORS IMPACTING STRATEGY:**

**765 University of Houston - Victoria**

GOAL: 1 Provide Instructional and Operations Support  
OBJECTIVE: 1 Provide Instructional and Operations Support  
STRATEGY: 3 Staff Group Insurance Premiums

Service Categories:

Service: 06 Income: A.2 Age: B.3

CODE	DESCRIPTION	Exp 2021	Est 2022	Bud 2023	BL 2024	BL 2025
------	-------------	----------	----------	----------	---------	---------

**EXPLANATION OF BIENNIAL CHANGE (includes Rider amounts):**

<u>STRATEGY BIENNIAL TOTAL - ALL FUNDS</u>		<u>BIENNIAL CHANGE</u>	<u>EXPLANATION OF BIENNIAL CHANGE</u>	
<u>Base Spending (Est 2022 + Bud 2023)</u>	<u>Baseline Request (BL 2024 + BL 2025)</u>		<u>\$ Amount</u>	<u>Explanation(s) of Amount (must specify MOFs and FTEs)</u>
\$2,635,862	\$2,662,726	\$26,864	\$26,864	This strategy is to provide proportional share of increased staff group insurance premiums paid from Other Education and General funds.
			<b>\$26,864</b>	<b>Total of Explanation of Biennial Change</b>

**765 University of Houston - Victoria**

GOAL: 1 Provide Instructional and Operations Support  
OBJECTIVE: 1 Provide Instructional and Operations Support  
STRATEGY: 4 Workers' Compensation Insurance

Service Categories:

Service: 06      Income: A.2      Age: B.3

CODE	DESCRIPTION	Exp 2021	Est 2022	Bud 2023	BL 2024	BL 2025
<b>Objects of Expense:</b>						
2009	OTHER OPERATING EXPENSE	\$30,855	\$27,501	\$36,938	\$36,938	\$36,938
<b>TOTAL, OBJECT OF EXPENSE</b>		<b>\$30,855</b>	<b>\$27,501</b>	<b>\$36,938</b>	<b>\$36,938</b>	<b>\$36,938</b>
<b>Method of Financing:</b>						
1	General Revenue Fund	\$23,651	\$21,584	\$29,587	\$36,938	\$36,938
<b>SUBTOTAL, MOF (GENERAL REVENUE FUNDS)</b>		<b>\$23,651</b>	<b>\$21,584</b>	<b>\$29,587</b>	<b>\$36,938</b>	<b>\$36,938</b>
<b>Method of Financing:</b>						
770	Est. Other Educational & General	\$7,204	\$5,917	\$7,351	\$0	\$0
<b>SUBTOTAL, MOF (GENERAL REVENUE FUNDS - DEDICATED)</b>		<b>\$7,204</b>	<b>\$5,917</b>	<b>\$7,351</b>	<b>\$0</b>	<b>\$0</b>
<b>TOTAL, METHOD OF FINANCE (INCLUDING RIDERS)</b>					<b>\$36,938</b>	<b>\$36,938</b>
<b>TOTAL, METHOD OF FINANCE (EXCLUDING RIDERS)</b>		<b>\$30,855</b>	<b>\$27,501</b>	<b>\$36,938</b>	<b>\$36,938</b>	<b>\$36,938</b>
<b>FULL TIME EQUIVALENT POSITIONS:</b>						

**765 University of Houston - Victoria**

GOAL: 1 Provide Instructional and Operations Support  
OBJECTIVE: 1 Provide Instructional and Operations Support  
STRATEGY: 4 Workers' Compensation Insurance

Service Categories:

Service: 06 Income: A.2 Age: B.3

CODE	DESCRIPTION	Exp 2021	Est 2022	Bud 2023	BL 2024	BL 2025
------	-------------	----------	----------	----------	---------	---------

**STRATEGY DESCRIPTION AND JUSTIFICATION:**

The strategy funds the Worker's Compensation payments related to Educational and General funds.

**EXTERNAL/INTERNAL FACTORS IMPACTING STRATEGY:**

**EXPLANATION OF BIENNIAL CHANGE (includes Rider amounts):**

<u>STRATEGY BIENNIAL TOTAL - ALL FUNDS</u>		<u>BIENNIAL CHANGE</u>	<u>EXPLANATION OF BIENNIAL CHANGE</u>	
<u>Base Spending (Est 2022 + Bud 2023)</u>	<u>Baseline Request (BL 2024 + BL 2025)</u>		<u>\$ Amount</u>	<u>Explanation(s) of Amount (must specify MOFs and FTEs)</u>
\$64,439	\$73,876	\$9,437	\$9,437	Variance in claims vs appropriation
			<u>\$9,437</u>	<b>Total of Explanation of Biennial Change</b>



**765 University of Houston - Victoria**

GOAL: 1 Provide Instructional and Operations Support  
OBJECTIVE: 1 Provide Instructional and Operations Support  
STRATEGY: 6 Texas Public Education Grants

Service Categories:

Service: 20 Income: A.2 Age: B.3

CODE	DESCRIPTION	Exp 2021	Est 2022	Bud 2023	BL 2024	BL 2025
<b>Objects of Expense:</b>						
2009	OTHER OPERATING EXPENSE	\$720,731	\$648,143	\$708,235	\$708,235	\$708,235
<b>TOTAL, OBJECT OF EXPENSE</b>		<b>\$720,731</b>	<b>\$648,143</b>	<b>\$708,235</b>	<b>\$708,235</b>	<b>\$708,235</b>
<b>Method of Financing:</b>						
770	Est. Other Educational & General	\$720,731	\$648,143	\$708,235	\$708,235	\$708,235
<b>SUBTOTAL, MOF (GENERAL REVENUE FUNDS - DEDICATED)</b>		<b>\$720,731</b>	<b>\$648,143</b>	<b>\$708,235</b>	<b>\$708,235</b>	<b>\$708,235</b>
<b>TOTAL, METHOD OF FINANCE (INCLUDING RIDERS)</b>					<b>\$708,235</b>	<b>\$708,235</b>
<b>TOTAL, METHOD OF FINANCE (EXCLUDING RIDERS)</b>		<b>\$720,731</b>	<b>\$648,143</b>	<b>\$708,235</b>	<b>\$708,235</b>	<b>\$708,235</b>

**FULL TIME EQUIVALENT POSITIONS:**

**STRATEGY DESCRIPTION AND JUSTIFICATION:**

This strategy represents tuition set aside for the Texas Public Education Grants program as required by Section 56.033 of the Texas Education Code.

**EXTERNAL/INTERNAL FACTORS IMPACTING STRATEGY:**

**765 University of Houston - Victoria**

GOAL: 1 Provide Instructional and Operations Support  
OBJECTIVE: 1 Provide Instructional and Operations Support  
STRATEGY: 6 Texas Public Education Grants

Service Categories:

Service: 20 Income: A.2 Age: B.3

CODE	DESCRIPTION	Exp 2021	Est 2022	Bud 2023	BL 2024	BL 2025
------	-------------	----------	----------	----------	---------	---------

**EXPLANATION OF BIENNIAL CHANGE (includes Rider amounts):**

<u>STRATEGY BIENNIAL TOTAL - ALL FUNDS</u>		<u>BIENNIAL CHANGE</u>	<u>EXPLANATION OF BIENNIAL CHANGE</u>	
<u>Base Spending (Est 2022 + Bud 2023)</u>	<u>Baseline Request (BL 2024 + BL 2025)</u>		<u>\$ Amount</u>	<u>Explanation(s) of Amount (must specify MOFs and FTEs)</u>
\$1,356,378	\$1,416,470	\$60,092	\$60,092	Due to change in tuition revenue
			<b>\$60,092</b>	<b>Total of Explanation of Biennial Change</b>

**765 University of Houston - Victoria**

GOAL: 2 Provide Infrastructure Support  
OBJECTIVE: 1 Provide Operation and Maintenance of E&G Space  
STRATEGY: 1 Educational and General Space Support

Service Categories:

Service: 10 Income: A.2 Age: B.3

CODE	DESCRIPTION	Exp 2021	Est 2022	Bud 2023	BL 2024 <sup>(1)</sup>	BL 2025 <sup>(1)</sup>
<b>Efficiency Measures:</b>						
1	Space Utilization Rate of Classrooms	54.00	54.00	70.00	70.00	70.00
2	Space Utilization Rate of Labs	92.00	92.00	92.00	92.00	92.00
<b>Objects of Expense:</b>						
1001	SALARIES AND WAGES	\$194,488	\$216,122	\$221,291	\$0	\$0
1002	OTHER PERSONNEL COSTS	\$0	\$0	\$0	\$0	\$0
2004	UTILITIES	\$245,545	\$350,000	\$607,512	\$0	\$0
2009	OTHER OPERATING EXPENSE	\$4	\$0	\$0	\$0	\$0
<b>TOTAL, OBJECT OF EXPENSE</b>		<b>\$440,037</b>	<b>\$566,122</b>	<b>\$828,803</b>	<b>\$0</b>	<b>\$0</b>
<b>Method of Financing:</b>						
1	General Revenue Fund	\$440,037	\$566,122	\$828,803	\$0	\$0
<b>SUBTOTAL, MOF (GENERAL REVENUE FUNDS)</b>		<b>\$440,037</b>	<b>\$566,122</b>	<b>\$828,803</b>	<b>\$0</b>	<b>\$0</b>
<b>TOTAL, METHOD OF FINANCE (INCLUDING RIDERS)</b>					<b>\$0</b>	<b>\$0</b>
<b>TOTAL, METHOD OF FINANCE (EXCLUDING RIDERS)</b>		<b>\$440,037</b>	<b>\$566,122</b>	<b>\$828,803</b>	<b>\$0</b>	<b>\$0</b>
<b>FULL TIME EQUIVALENT POSITIONS:</b>		<b>4.7</b>	<b>4.5</b>	<b>4.5</b>	<b>4.5</b>	<b>4.5</b>

(1) - Formula funded strategies are not requested in 2024-25 because amounts are not determined by institutions.

**765 University of Houston - Victoria**

GOAL: 2 Provide Infrastructure Support  
OBJECTIVE: 1 Provide Operation and Maintenance of E&G Space  
STRATEGY: 1 Educational and General Space Support

Service Categories:  
Service: 10 Income: A.2 Age: B.3

CODE	DESCRIPTION	Exp 2021	Est 2022	Bud 2023	BL 2024 <sup>(1)</sup>	BL 2025 <sup>(1)</sup>
------	-------------	----------	----------	----------	------------------------	------------------------

**STRATEGY DESCRIPTION AND JUSTIFICATION:**

The Infrastructure Support formula distributes funding associated with plant-related formulas and utilities. This formula is driven by the predicted square feet for universities' educational and general activities produced by the Coordinating Board Space Projection Model. The portion of the formula related to utilities is adjusted to reflect differences in unit costs for purchased utilities, including electricity, natural gas, water and wastewater, and thermal energy. FTEs will increase as we add new facilities in 2024 and 2025.

**EXTERNAL/INTERNAL FACTORS IMPACTING STRATEGY:**

The University prides itself in maintaining facilities where there are no deferred maintenance issues. Located 25 miles from the coast, the University may need additional expenditures due to extreme weather.

(1)- Formula funding strategies are not requested 2024-25 because the amounts are not determined by institutions.

**EXPLANATION OF BIENNIAL CHANGE (includes Rider amounts):**

<u>STRATEGY BIENNIAL TOTAL - ALL FUNDS</u>		<u>BIENNIAL CHANGE</u>	<u>EXPLANATION OF BIENNIAL CHANGE</u>	
Base Spending (Est 2022 + Bud 2023)	Baseline Request (BL 2024 + BL 2025)		\$ Amount	Explanation(s) of Amount (must specify MOFs and FTEs)
\$1,394,925	\$0	\$(1,394,925)	\$(1,394,925)	Remaining expenditures for FY2021-2022 are reported in Operations Support
			<b>\$(1,394,925)</b>	<b>Total of Explanation of Biennial Change</b>

(1) - Formula funded strategies are not requested in 2024-25 because amounts are not determined by institutions.

**765 University of Houston - Victoria**

GOAL: 3 Provide Non-formula Support  
OBJECTIVE: 1 INSTRUCTIONAL SUPPORT  
STRATEGY: 1 Master's Degree in Nursing

Service Categories:

Service: 19 Income: A.2 Age: B.3

CODE	DESCRIPTION	Exp 2021	Est 2022	Bud 2023	BL 2024	BL 2025
<b>Objects of Expense:</b>						
1001	SALARIES AND WAGES	\$0	\$0	\$0	\$0	\$0
1005	FACULTY SALARIES	\$0	\$0	\$0	\$0	\$0
<b>TOTAL, OBJECT OF EXPENSE</b>		<b>\$0</b>	<b>\$0</b>	<b>\$0</b>	<b>\$0</b>	<b>\$0</b>
<b>Method of Financing:</b>						
1	General Revenue Fund	\$0	\$0	\$0	\$0	\$0
<b>SUBTOTAL, MOF (GENERAL REVENUE FUNDS)</b>		<b>\$0</b>	<b>\$0</b>	<b>\$0</b>	<b>\$0</b>	<b>\$0</b>
<b>TOTAL, METHOD OF FINANCE (INCLUDING RIDERS)</b>					<b>\$0</b>	<b>\$0</b>
<b>TOTAL, METHOD OF FINANCE (EXCLUDING RIDERS)</b>		<b>\$0</b>	<b>\$0</b>	<b>\$0</b>	<b>\$0</b>	<b>\$0</b>
<b>FULL TIME EQUIVALENT POSITIONS:</b>						
<b>STRATEGY DESCRIPTION AND JUSTIFICATION:</b>						

**765 University of Houston - Victoria**

GOAL: 3 Provide Non-formula Support  
OBJECTIVE: 1 INSTRUCTIONAL SUPPORT  
STRATEGY: 1 Master's Degree in Nursing

Service Categories:

Service: 19 Income: A.2 Age: B.3

CODE	DESCRIPTION	Exp 2021	Est 2022	Bud 2023	BL 2024	BL 2025
------	-------------	----------	----------	----------	---------	---------

**EXTERNAL/INTERNAL FACTORS IMPACTING STRATEGY:**

**EXPLANATION OF BIENNIAL CHANGE (includes Rider amounts):**

<u>STRATEGY BIENNIAL TOTAL - ALL FUNDS</u>		<u>BIENNIAL CHANGE</u>	<u>EXPLANATION OF BIENNIAL CHANGE</u>	
<u>Base Spending (Est 2022 + Bud 2023)</u>	<u>Baseline Request (BL 2024 + BL 2025)</u>		<u>\$ Amount</u>	<u>Explanation(s) of Amount (must specify MOFs and FTEs)</u>
\$0	\$0	\$0		
			<u>\$0</u>	<b>Total of Explanation of Biennial Change</b>

**765 University of Houston - Victoria**

GOAL: 3 Provide Non-formula Support  
OBJECTIVE: 1 INSTRUCTIONAL SUPPORT  
STRATEGY: 2 Expansion Funding

Service Categories:

Service: 19 Income: A.2 Age: B.3

CODE	DESCRIPTION	Exp 2021	Est 2022	Bud 2023	BL 2024	BL 2025
<b>Objects of Expense:</b>						
1001	SALARIES AND WAGES	\$0	\$0	\$0	\$1,223,829	\$1,223,829
<b>TOTAL, OBJECT OF EXPENSE</b>		<b>\$0</b>	<b>\$0</b>	<b>\$0</b>	<b>\$1,223,829</b>	<b>\$1,223,829</b>
<b>Method of Financing:</b>						
1	General Revenue Fund	\$0	\$0	\$0	\$1,223,829	\$1,223,829
<b>SUBTOTAL, MOF (GENERAL REVENUE FUNDS)</b>		<b>\$0</b>	<b>\$0</b>	<b>\$0</b>	<b>\$1,223,829</b>	<b>\$1,223,829</b>
<b>TOTAL, METHOD OF FINANCE (INCLUDING RIDERS)</b>					<b>\$1,223,829</b>	<b>\$1,223,829</b>
<b>TOTAL, METHOD OF FINANCE (EXCLUDING RIDERS)</b>		<b>\$0</b>	<b>\$0</b>	<b>\$0</b>	<b>\$1,223,829</b>	<b>\$1,223,829</b>

**FULL TIME EQUIVALENT POSITIONS:**

**STRATEGY DESCRIPTION AND JUSTIFICATION:**

During the 81st Legislative Session (2009), UHV received authority to downward expand and to offer lower division courses to freshmen and sophomores beginning fall 2010. This authority for downward expansion was vital for expanding access to higher education and enhancing student success, which are key goals in the state's higher education 60X30TX initiative. Universities throughout the state that have expanded to four-year universities found it necessary to seek additional state operating funds to provide this new access point to students within their regions. Upper-level institutions do not have the structure in place to provide the support for this endeavor.

**765 University of Houston - Victoria**

GOAL: 3 Provide Non-formula Support  
OBJECTIVE: 1 INSTRUCTIONAL SUPPORT  
STRATEGY: 2 Expansion Funding

Service Categories:

Service: 19 Income: A.2 Age: B.3

CODE	DESCRIPTION	Exp 2021	Est 2022	Bud 2023	BL 2024	BL 2025
------	-------------	----------	----------	----------	---------	---------

**EXTERNAL/INTERNAL FACTORS IMPACTING STRATEGY:**

These General Revenue funds are transferred to Operations Support to provide funding for initiatives that allow for additional faculty and staff, quality instructional labs, and new academic programs.  
Additional information for this strategy is available in Schedule 9, Non-Formula Support Information.

**EXPLANATION OF BIENNIAL CHANGE (includes Rider amounts):**

<u>STRATEGY BIENNIAL TOTAL - ALL FUNDS</u>		<u>BIENNIAL CHANGE</u>	<u>EXPLANATION OF BIENNIAL CHANGE</u>	
<u>Base Spending (Est 2022 + Bud 2023)</u>	<u>Baseline Request (BL 2024 + BL 2025)</u>		<u>\$ Amount</u>	<u>Explanation(s) of Amount (must specify MOFs and FTEs)</u>
\$0	\$2,447,658	\$2,447,658	\$2,447,658	Expenditures for FY2020-2021 are reported in Operations Support
			<u>\$2,447,658</u>	<b>Total of Explanation of Biennial Change</b>



**765 University of Houston - Victoria**

GOAL: 3 Provide Non-formula Support  
OBJECTIVE: 3 Public Service  
STRATEGY: 1 Center for Regional Outreach

Service Categories:

Service: 19 Income: A.2 Age: B.3

CODE	DESCRIPTION	Exp 2021	Est 2022	Bud 2023	BL 2024	BL 2025
<b>Objects of Expense:</b>						
1001	SALARIES AND WAGES	\$0	\$0	\$0	\$0	\$0
2009	OTHER OPERATING EXPENSE	\$0	\$0	\$0	\$0	\$0
<b>TOTAL, OBJECT OF EXPENSE</b>		<b>\$0</b>	<b>\$0</b>	<b>\$0</b>	<b>\$0</b>	<b>\$0</b>
<b>Method of Financing:</b>						
1	General Revenue Fund	\$0	\$0	\$0	\$0	\$0
<b>SUBTOTAL, MOF (GENERAL REVENUE FUNDS)</b>		<b>\$0</b>	<b>\$0</b>	<b>\$0</b>	<b>\$0</b>	<b>\$0</b>
<b>TOTAL, METHOD OF FINANCE (INCLUDING RIDERS)</b>					<b>\$0</b>	<b>\$0</b>
<b>TOTAL, METHOD OF FINANCE (EXCLUDING RIDERS)</b>		<b>\$0</b>	<b>\$0</b>	<b>\$0</b>	<b>\$0</b>	<b>\$0</b>
<b>FULL TIME EQUIVALENT POSITIONS:</b>						
<b>STRATEGY DESCRIPTION AND JUSTIFICATION:</b>						

**765 University of Houston - Victoria**

GOAL: 3 Provide Non-formula Support  
OBJECTIVE: 3 Public Service  
STRATEGY: 1 Center for Regional Outreach

Service Categories:

Service: 19 Income: A.2 Age: B.3

CODE	DESCRIPTION	Exp 2021	Est 2022	Bud 2023	BL 2024	BL 2025
------	-------------	----------	----------	----------	---------	---------

**EXTERNAL/INTERNAL FACTORS IMPACTING STRATEGY:**

**EXPLANATION OF BIENNIAL CHANGE (includes Rider amounts):**

<u>STRATEGY BIENNIAL TOTAL - ALL FUNDS</u>		<u>BIENNIAL CHANGE</u>	<u>EXPLANATION OF BIENNIAL CHANGE</u>	
<u>Base Spending (Est 2022 + Bud 2023)</u>	<u>Baseline Request (BL 2024 + BL 2025)</u>		<u>\$ Amount</u>	<u>Explanation(s) of Amount (must specify MOFs and FTEs)</u>
\$0	\$0	\$0		
			<u>\$0</u>	<b>Total of Explanation of Biennial Change</b>

**765 University of Houston - Victoria**

GOAL: 3 Provide Non-formula Support  
OBJECTIVE: 3 Public Service  
STRATEGY: 2 Small Business Development Center

Service Categories:

Service: 13 Income: A.2 Age: B.3

CODE	DESCRIPTION	Exp 2021	Est 2022	Bud 2023	BL 2024	BL 2025
<b>Objects of Expense:</b>						
1001	SALARIES AND WAGES	\$153,176	\$152,228	\$153,176	\$153,176	\$153,176
1002	OTHER PERSONNEL COSTS	\$0	\$948	\$0	\$0	\$0
<b>TOTAL, OBJECT OF EXPENSE</b>		<b>\$153,176</b>	<b>\$153,176</b>	<b>\$153,176</b>	<b>\$153,176</b>	<b>\$153,176</b>
<b>Method of Financing:</b>						
1	General Revenue Fund	\$153,176	\$153,176	\$153,176	\$153,176	\$153,176
<b>SUBTOTAL, MOF (GENERAL REVENUE FUNDS)</b>		<b>\$153,176</b>	<b>\$153,176</b>	<b>\$153,176</b>	<b>\$153,176</b>	<b>\$153,176</b>
<b>TOTAL, METHOD OF FINANCE (INCLUDING RIDERS)</b>					<b>\$153,176</b>	<b>\$153,176</b>
<b>TOTAL, METHOD OF FINANCE (EXCLUDING RIDERS)</b>		<b>\$153,176</b>	<b>\$153,176</b>	<b>\$153,176</b>	<b>\$153,176</b>	<b>\$153,176</b>
<b>FULL TIME EQUIVALENT POSITIONS:</b>		<b>4.7</b>	<b>4.0</b>	<b>4.0</b>	<b>4.0</b>	<b>4.0</b>
<b>STRATEGY DESCRIPTION AND JUSTIFICATION:</b>						

**765 University of Houston - Victoria**

GOAL: 3 Provide Non-formula Support

OBJECTIVE: 3 Public Service

Service Categories:

STRATEGY: 2 Small Business Development Center

Service: 13

Income: A.2

Age: B.3

CODE	DESCRIPTION	Exp 2021	Est 2022	Bud 2023	BL 2024	BL 2025
------	-------------	----------	----------	----------	---------	---------

The University of Houston-Victoria Small Business Development Center (UHV-SBDC) serves 11 rural, underserved, counties. The mission of the SBDC is to promote small business development through extension services and to promote the growth, expansion, innovation, increased productivity, and improved management of small business. This is achieved through activities of individual business advising and technical assistance, training seminars and advocacy. SBDCs are a revenue positive organization to the State, funded by a combination of state and federal dollars. The UHV-SBDC is a part of the Texas South-West Small Business Development Center Network which services 79 counties in Texas.

During 2021 UHV-SBDC assisted 320 small businesses through 2,500 hours of service. Staff created and retained 155 new jobs, started 17 businesses, and helped access \$4.5M in capital formation. Training was also provided to over 560 small business attendees.

Currently, small businesses across the region are reacting to the devastating effects of COVID, inflation, supply chain disruptions, workforce shortages, lack of broadband both in underserved urban and rural areas and are turning to the SBDCs for assistance. The need for services in the UHV-SBDC region is outpacing the resources to meet that need. UHV and the Texas South-West SBDC Network will be coordinating with SBDC Administrators across the state, to request additional appropriations to support the demand for SBDC and services.

**EXTERNAL/INTERNAL FACTORS IMPACTING STRATEGY:**

UHV-SBDC played a huge role assisting small businesses access and manage COVID survival and recovery by continuing to utilize SBA disaster loans and other assistance provided by private and public lenders. Small business recovery will continue well into the 2024-25 biennium and beyond. Many Texas rural communities often lack the economic development capacity and need technical assistance, information and resources in a hands-on way. Funding for 2024-25 will sustain and expand economic and small business resources to a historically underserved, rural, territory. This will assist rural Texas businesses and communities achieve greater success creating jobs and investments.

**765 University of Houston - Victoria**

GOAL: 3 Provide Non-formula Support

OBJECTIVE: 3 Public Service

Service Categories:

STRATEGY: 2 Small Business Development Center

Service: 13

Income: A.2

Age: B.3

CODE	DESCRIPTION	Exp 2021	Est 2022	Bud 2023	BL 2024	BL 2025
------	-------------	----------	----------	----------	---------	---------

**EXPLANATION OF BIENNIAL CHANGE (includes Rider amounts):**

<u>STRATEGY BIENNIAL TOTAL - ALL FUNDS</u>		<u>BIENNIAL CHANGE</u>	<u>EXPLANATION OF BIENNIAL CHANGE</u>	
<u>Base Spending (Est 2022 + Bud 2023)</u>	<u>Baseline Request (BL 2024 + BL 2025)</u>		<u>\$ Amount</u>	<u>Explanation(s) of Amount (must specify MOFs and FTEs)</u>
\$306,352	\$306,352	\$0		
			<b>\$0</b>	<b>Total of Explanation of Biennial Change</b>

**765 University of Houston - Victoria**

GOAL: 3 Provide Non-formula Support  
OBJECTIVE: 4 INSTITUTIONAL SUPPORT  
STRATEGY: 1 Institutional Enhancement

Service Categories:

Service: 19 Income: A.2 Age: B.3

CODE	DESCRIPTION	Exp 2021	Est 2022	Bud 2023	BL 2024	BL 2025
<b>Objects of Expense:</b>						
1001	SALARIES AND WAGES	\$0	\$0	\$0	\$2,517,935	\$2,517,935
2002	FUELS AND LUBRICANTS	\$844	\$0	\$0	\$0	\$0
2009	OTHER OPERATING EXPENSE	\$494,081	\$536	\$899	\$899	\$899
5000	CAPITAL EXPENDITURES	\$(21,194)	\$0	\$0	\$0	\$0
<b>TOTAL, OBJECT OF EXPENSE</b>		<b>\$473,731</b>	<b>\$536</b>	<b>\$899</b>	<b>\$2,518,834</b>	<b>\$2,518,834</b>
<b>Method of Financing:</b>						
1	General Revenue Fund	\$0	\$0	\$0	\$2,517,935	\$2,517,935
<b>SUBTOTAL, MOF (GENERAL REVENUE FUNDS)</b>		<b>\$0</b>	<b>\$0</b>	<b>\$0</b>	<b>\$2,517,935</b>	<b>\$2,517,935</b>
<b>Method of Financing:</b>						
599	Economic Stabilization Fund	\$472,231	\$0	\$0	\$0	\$0
802	Lic Plate Trust Fund No. 0802, est	\$1,500	\$536	\$899	\$899	\$899
<b>SUBTOTAL, MOF (OTHER FUNDS)</b>		<b>\$473,731</b>	<b>\$536</b>	<b>\$899</b>	<b>\$899</b>	<b>\$899</b>

**765 University of Houston - Victoria**

GOAL: 3 Provide Non-formula Support  
OBJECTIVE: 4 INSTITUTIONAL SUPPORT  
STRATEGY: 1 Institutional Enhancement

Service Categories:

Service: 19 Income: A.2 Age: B.3

CODE	DESCRIPTION	Exp 2021	Est 2022	Bud 2023	BL 2024	BL 2025
<b>TOTAL, METHOD OF FINANCE (INCLUDING RIDERS)</b>					<b>\$2,518,834</b>	<b>\$2,518,834</b>
<b>TOTAL, METHOD OF FINANCE (EXCLUDING RIDERS)</b>		<b>\$473,731</b>	<b>\$536</b>	<b>\$899</b>	<b>\$2,518,834</b>	<b>\$2,518,834</b>

**FULL TIME EQUIVALENT POSITIONS:**

**STRATEGY DESCRIPTION AND JUSTIFICATION:**

These funds are transferred to Operations Support to provide funding for:  
- additional qualified faculty to support enrollment growth for freshmen and sophmores  
- quality instructional labs  
- new academic programs

**EXTERNAL/INTERNAL FACTORS IMPACTING STRATEGY:**

This funding is vital to the continued support of the university's goals and strategies and current expansion of 60x30TX and downward expansion initiatives. These funds are transferred to Operational Support to provide funding for initiatives that allow for additional faculty, quality instructional labs, and new academic programs.

**765 University of Houston - Victoria**

GOAL: 3 Provide Non-formula Support  
OBJECTIVE: 4 INSTITUTIONAL SUPPORT  
STRATEGY: 1 Institutional Enhancement

Service Categories:

Service: 19 Income: A.2 Age: B.3

CODE	DESCRIPTION	Exp 2021	Est 2022	Bud 2023	BL 2024	BL 2025
------	-------------	----------	----------	----------	---------	---------

**EXPLANATION OF BIENNIAL CHANGE (includes Rider amounts):**

<u>STRATEGY BIENNIAL TOTAL - ALL FUNDS</u>		<u>BIENNIAL CHANGE</u>	<u>EXPLANATION OF BIENNIAL CHANGE</u>	
<u>Base Spending (Est 2022 + Bud 2023)</u>	<u>Baseline Request (BL 2024 + BL 2025)</u>		<u>\$ Amount</u>	<u>Explanation(s) of Amount (must specify MOFs and FTEs)</u>
\$1,435	\$5,037,668	\$5,036,233	\$5,034,435	These funds are transferred to Operations Support to provide funding for initiatives that allow for additional faculty, quality instructional labs, and new academic programs
			\$1,798	License Plate Trust Fund
			<b>\$5,036,233</b>	<b>Total of Explanation of Biennial Change</b>



**765 University of Houston - Victoria**

GOAL:	6	Research Funds	
OBJECTIVE:	3	Comprehensive Research Fund	Service Categories:
STRATEGY:	1	Comprehensive Research Fund	Service: 21      Income: A.2      Age: B.3

CODE	DESCRIPTION	Exp 2021	Est 2022	Bud 2023	BL 2024	BL 2025
<b>Objects of Expense:</b>						
5000	CAPITAL EXPENDITURES	\$41,216	\$6,400	\$6,400	\$0	\$0
<b>TOTAL, OBJECT OF EXPENSE</b>		<b>\$41,216</b>	<b>\$6,400</b>	<b>\$6,400</b>	<b>\$0</b>	<b>\$0</b>
<b>Method of Financing:</b>						
1	General Revenue Fund	\$41,216	\$6,400	\$6,400	\$0	\$0
<b>SUBTOTAL, MOF (GENERAL REVENUE FUNDS)</b>		<b>\$41,216</b>	<b>\$6,400</b>	<b>\$6,400</b>	<b>\$0</b>	<b>\$0</b>
<b>TOTAL, METHOD OF FINANCE (INCLUDING RIDERS)</b>					<b>\$0</b>	<b>\$0</b>
<b>TOTAL, METHOD OF FINANCE (EXCLUDING RIDERS)</b>		<b>\$41,216</b>	<b>\$6,400</b>	<b>\$6,400</b>	<b>\$0</b>	<b>\$0</b>
<b>FULL TIME EQUIVALENT POSITIONS:</b>		<b>0.0</b>	<b>0.0</b>	<b>0.0</b>	<b>0.0</b>	<b>0.0</b>
<b>STRATEGY DESCRIPTION AND JUSTIFICATION:</b>						

**765 University of Houston - Victoria**

GOAL: 6 Research Funds  
OBJECTIVE: 3 Comprehensive Research Fund  
STRATEGY: 1 Comprehensive Research Fund

Service Categories:  
Service: 21 Income: A.2 Age: B.3

CODE	DESCRIPTION	Exp 2021	Est 2022	Bud 2023	BL 2024	BL 2025
------	-------------	----------	----------	----------	---------	---------

The Texas Comprehensive Research Fund provides funding to promote increased research capacity at eligible general academic teaching institutions.

Funding is to be expended for the support and maintenance of educational and general activities, including research and student services, that promote increased research capacity.

A legislatively determined amount of funding is allocated based on the average amount of restricted research funds expended by each institution per year for the three preceding state fiscal years as reported to THECB.

**EXTERNAL/INTERNAL FACTORS IMPACTING STRATEGY:**

**EXPLANATION OF BIENNIAL CHANGE (includes Rider amounts):**

<u>STRATEGY BIENNIAL TOTAL - ALL FUNDS</u>		<u>BIENNIAL CHANGE</u>	<u>EXPLANATION OF BIENNIAL CHANGE</u>	
<u>Base Spending (Est 2022 + Bud 2023)</u>	<u>Baseline Request (BL 2024 + BL 2025)</u>		<u>\$ Amount</u>	<u>Explanation(s) of Amount (must specify MOFs and FTEs)</u>
\$12,800	\$0	\$ (12,800)	\$ (12,800)	This strategy is formula funded.
			<u>\$ (12,800)</u>	<b>Total of Explanation of Biennial Change</b>

---

**SUMMARY TOTALS:**

<b>OBJECTS OF EXPENSE:</b>	<b>\$19,891,727</b>	<b>\$21,214,695</b>	<b>\$21,794,403</b>	<b>\$5,972,375</b>	<b>\$5,972,375</b>
<b>METHODS OF FINANCE (INCLUDING RIDERS):</b>				<b>\$5,972,375</b>	<b>\$5,972,375</b>
<b>METHODS OF FINANCE (EXCLUDING RIDERS):</b>	<b>\$19,891,727</b>	<b>\$21,214,695</b>	<b>\$21,794,403</b>	<b>\$5,972,375</b>	<b>\$5,972,375</b>
<b>FULL TIME EQUIVALENT POSITIONS:</b>	<b>238.9</b>	<b>245.9</b>	<b>247.9</b>	<b>247.9</b>	<b>247.9</b>

**4.A. Exceptional Item Request Schedule**  
88th Regular Session, Agency Submission, Version 1  
Automated Budget and Evaluation System of Texas (ABEST)

DATE: **8/12/2022**  
TIME: **10:17:14AM**

Agency code: **765**                      Agency name: **University of Houston - Victoria**

CODE	DESCRIPTION	Excp 2024	Excp 2025
<p style="text-align: right;"> <b>Item Name:</b> COVID-19 Continued Impact Funding  <b>Item Priority:</b> 1  <b>IT Component:</b> No  <b>Anticipated Out-year Costs:</b> Yes  <b>Involve Contracts &gt; \$50,000:</b> No  <b>Includes Funding for the Following Strategy or Strategies:</b> 03-05-01      Exceptional Item Request </p>			
<b>OBJECTS OF EXPENSE:</b>			
1005	FACULTY SALARIES	3,168,604	3,168,604
2004	UTILITIES	352,067	352,067
<b>TOTAL, OBJECT OF EXPENSE</b>		<b>\$3,520,671</b>	<b>\$3,520,671</b>
<b>METHOD OF FINANCING:</b>			
1	General Revenue Fund	3,520,671	3,520,671
<b>TOTAL, METHOD OF FINANCING</b>		<b>\$3,520,671</b>	<b>\$3,520,671</b>
<b>FULL-TIME EQUIVALENT POSITIONS (FTE):</b>		35.00	35.00

**DESCRIPTION / JUSTIFICATION:**

UHV has received \$13,830,067 in Higher Education Emergency Relief Funds (HEERF) of which \$1,464,851 offset reduced state appropriations in FY 20 and FY 21 . Actual costs of the impact of COVID 19 to UHV exceeded \$24.2 million in lost revenues and additional associated expenses in FY 20, FY 21, and FY 22. UHV's rural location and student diversity with first-generation college students have been especially impacted by the pandemic and enrollment-based tuition and fee revenues have declined by over \$5.9 million in FY 22. In FY 2022 \$3,520,671 HEERF funds recovered for lost revenues were utilized for operating budget deficits. UHV requests hold harmless funding for faculty salaries and utilities.

**EXTERNAL/INTERNAL FACTORS:**

. In FY 2022 \$3,520,671 HEERF funds recovered for lost revenues were utilized for operating budget deficits.

**PCLS TRACKING KEY:**

**4.A. Exceptional Item Request Schedule**  
 88th Regular Session, Agency Submission, Version 1  
 Automated Budget and Evaluation System of Texas (ABEST)

DATE: **8/12/2022**  
 TIME: **10:17:14AM**

Agency code: **765**                      Agency name: **University of Houston - Victoria**

<u>CODE</u>	<u>DESCRIPTION</u>	<u>Excp 2024</u>	<u>Excp 2025</u>
-------------	--------------------	------------------	------------------

**DESCRIPTION OF ANTICIPATED OUT-YEAR COSTS :**

Anticipated costs for out-years include:

Faculty Salaries- \$3,168,604

Utilities- \$352,067

**ESTIMATED ANTICIPATED OUT-YEAR COSTS FOR ITEM:**

<u>2026</u>	<u>2027</u>	<u>2028</u>
\$3,520,671	\$3,520,671	\$3,520,671

**4.A. Exceptional Item Request Schedule**  
88th Regular Session, Agency Submission, Version 1  
Automated Budget and Evaluation System of Texas (ABEST)

DATE: **8/12/2022**  
TIME: **10:17:14AM**

Agency code: **765** Agency name: **University of Houston - Victoria**

CODE	DESCRIPTION	Excp 2024	Excp 2025
------	-------------	-----------	-----------

<b>Item Name:</b>	Community of Practice Centers for Mental Health
<b>Item Priority:</b>	2
<b>IT Component:</b>	No
<b>Anticipated Out-year Costs:</b>	Yes
<b>Involve Contracts &gt; \$50,000:</b>	No
<b>Includes Funding for the Following Strategy or Strategies:</b>	01-01-01 Operations Support
	03-05-01 Exceptional Item Request

**OBJECTS OF EXPENSE:**

1001	SALARIES AND WAGES	276,250	276,250
1005	FACULTY SALARIES	125,000	125,000
2005	TRAVEL	13,090	6,545
2009	OTHER OPERATING EXPENSE	24,250	14,000
5000	CAPITAL EXPENDITURES	387,500	5,000
<b>TOTAL, OBJECT OF EXPENSE</b>		<b>\$826,090</b>	<b>\$426,795</b>

**METHOD OF FINANCING:**

1	General Revenue Fund	826,090	426,795
<b>TOTAL, METHOD OF FINANCING</b>		<b>\$826,090</b>	<b>\$426,795</b>

**FULL-TIME EQUIVALENT POSITIONS (FTE):**

5.00	5.00
------	------

**DESCRIPTION / JUSTIFICATION:**

Each year, 1 in 5 U.S. adults and 1 in 6 youths experience mental illness, which has broader implications to the community at large. On the other hand, there is a shortage of mental health practitioners and counseling professionals. The two Community of Practice Centers will involve UHV's Counseling Training Clinics in Katy and Victoria and will partner with all impacted groups such as K-12 schools, the justice system, and community based programs to share best practices and create new knowledge about care and service related to mental health. The clinics will provide access to a variety of affordable mental health care and professional counseling to the Katy and Victoria communities while the Community of Practice Centers will serve as a mechanism to collect and disseminate information and data related to mental health.

**EXTERNAL/INTERNAL FACTORS:**

UHV is well positioned to implement the Community of Practice Center for Mental Health in Katy and Victoria as the Clinical Mental Health Counseling Program is Council for Accreditation of Counseling and Related Education Programs (CACREP) accredited and the graduate students in the Counseling and Forensic Psychology are closely supervised by well-qualified faculty members who prepare our graduates to become ethical, evidence-based practitioners of counseling. We anticipate that the two Community of Practice Centers for Mental Health in Katy and Victoria will be able to help respond to the mental health care professional shortage in Katy and Victoria in working with UHV's Clinical Mental Health Program and Counseling/Forensic Psychology Program, by creating a pipeline of future mental health care practitioners who are likely to continue to practice in the same regions as their respective training clinics.

**4.A. Exceptional Item Request Schedule**  
88th Regular Session, Agency Submission, Version 1  
Automated Budget and Evaluation System of Texas (ABEST)

DATE: **8/12/2022**  
TIME: **10:17:14AM**

---

Agency code: **765**                      Agency name: **University of Houston - Victoria**

---

<b>CODE</b>	<b>DESCRIPTION</b>	<b>Excp 2024</b>	<b>Excp 2025</b>
-------------	--------------------	------------------	------------------

---

**PCLS TRACKING KEY:**

---

**DESCRIPTION OF ANTICIPATED OUT-YEAR COSTS :**

Anticipated costs for out-years include:

Salaries and Wages- \$276,250

Faculty Salaries- \$125,000

Travel- \$6,545

Other Operating Expense- \$14,000

Capital Expenditures- \$5,000

**ESTIMATED ANTICIPATED OUT-YEAR COSTS FOR ITEM:**

<b>2026</b>	<b>2027</b>	<b>2028</b>
\$426,795	\$426,795	\$426,795

**4.B. Exceptional Items Strategy Allocation Schedule**  
88th Regular Session, Agency Submission, Version 1  
Automated Budget and Evaluation System of Texas (ABEST)

DATE: **8/12/2022**  
TIME: **10:17:14AM**

Agency code:	<b>765</b>	Agency name:	<b>University of Houston - Victoria</b>		
Code	Description			Excp 2024	Excp 2025
<b>Item Name:</b>	COVID-19 Continued Impact Funding				
<b>Allocation to Strategy:</b>	3-5-1	Exceptional Item Request			
<b>OBJECTS OF EXPENSE:</b>					
	1005	FACULTY SALARIES		3,168,604	3,168,604
	2004	UTILITIES		352,067	352,067
<b>TOTAL, OBJECT OF EXPENSE</b>				<b>\$3,520,671</b>	<b>\$3,520,671</b>
<b>METHOD OF FINANCING:</b>					
	1	General Revenue Fund		3,520,671	3,520,671
<b>TOTAL, METHOD OF FINANCING</b>				<b>\$3,520,671</b>	<b>\$3,520,671</b>
<b>FULL-TIME EQUIVALENT POSITIONS (FTE):</b>				35.0	35.0



Agency code:	765	Agency name:	University of Houston - Victoria		
Code	Description			Excp 2024	Excp 2025
<b>Item Name:</b>		Community of Practice Centers for Mental Health			
<b>Allocation to Strategy:</b>		3-5-1	Exceptional Item Request		
<b>OBJECTS OF EXPENSE:</b>					
1001	SALARIES AND WAGES			276,250	276,250
1005	FACULTY SALARIES			125,000	125,000
2005	TRAVEL			13,090	6,545
2009	OTHER OPERATING EXPENSE			24,250	14,000
5000	CAPITAL EXPENDITURES			387,500	5,000
<b>TOTAL, OBJECT OF EXPENSE</b>				<b>\$826,090</b>	<b>\$426,795</b>
<b>METHOD OF FINANCING:</b>					
	1 General Revenue Fund			826,090	426,795
<b>TOTAL, METHOD OF FINANCING</b>				<b>\$826,090</b>	<b>\$426,795</b>
<b>FULL-TIME EQUIVALENT POSITIONS (FTE):</b>				5.0	5.0

**4.C. Exceptional Items Strategy Request**  
88th Regular Session, Agency Submission, Version 1  
Automated Budget and Evaluation System of Texas (ABEST)

**DATE:** 8/12/2022  
**TIME:** 10:17:15AM

Agency Code: **765** Agency name: **University of Houston - Victoria**

GOAL: 3 Provide Non-formula Support

OBJECTIVE: 5 EXCEPTIONAL ITEM REQUEST

STRATEGY: 1 Exceptional Item Request

Service Categories:

Service: 19 Income: A.2 Age: B.3

CODE	DESCRIPTION	Excp 2024	Excp 2025
------	-------------	-----------	-----------

**OBJECTS OF EXPENSE:**

1001	SALARIES AND WAGES	276,250	276,250
1005	FACULTY SALARIES	3,293,604	3,293,604
2004	UTILITIES	352,067	352,067
2005	TRAVEL	13,090	6,545
2009	OTHER OPERATING EXPENSE	24,250	14,000
5000	CAPITAL EXPENDITURES	387,500	5,000
<b>Total, Objects of Expense</b>		<b>\$4,346,761</b>	<b>\$3,947,466</b>

**METHOD OF FINANCING:**

1	General Revenue Fund	4,346,761	3,947,466
<b>Total, Method of Finance</b>		<b>\$4,346,761</b>	<b>\$3,947,466</b>

<b>FULL-TIME EQUIVALENT POSITIONS (FTE):</b>	40.0	40.0
----------------------------------------------	------	------

**EXCEPTIONAL ITEM(S) INCLUDED IN STRATEGY:**

COVID-19 Continued Impact Funding

Community of Practice Centers for Mental Health

**6.A. Historically Underutilized Business Supporting Schedule**  
88th Regular Session, Agency Submission, Version 1  
Automated Budget and Evaluation System of Texas (ABEST)

Date: **8/12/2022**  
Time: **10:17:15AM**

Agency Code: **765**      Agency: **University of Houston - Victoria**

COMPARISON TO STATEWIDE HUB PROCUREMENT GOALS

**A. Fiscal Year - HUB Expenditure Information**

Statewide HUB Goals	Procurement Category	% Goal	HUB Expenditures FY 2020			Total Expenditures		HUB Expenditures FY 2021			Total Expenditures	
			% Actual	Diff	Actual \$	FY 2020	% Goal	% Actual	Diff	Actual \$	FY 2021	
11.2%	Heavy Construction	0.0 %	0.0%	0.0%	\$0	\$0	0.0 %	0.0%	0.0%	\$0	\$0	
21.1%	Building Construction	10.5 %	10.5%	0.0%	\$3,211,070	\$30,579,626	15.0 %	10.0%	-5.0%	\$3,211,070	\$31,977,433	
32.9%	Special Trade	20.0 %	1.9%	-18.1%	\$26,200	\$1,412,908	20.0 %	2.2%	-17.8%	\$26,200	\$1,207,371	
23.7%	Professional Services	15.0 %	1.0%	-14.0%	\$9,000	\$885,420	15.0 %	0.5%	-14.5%	\$4,500	\$907,425	
26.0%	Other Services	15.0 %	13.5%	-1.5%	\$603,342	\$4,469,388	15.0 %	12.1%	-2.9%	\$539,030	\$4,441,545	
21.1%	Commodities	35.0 %	51.7%	16.7%	\$2,046,867	\$3,957,506	35.0 %	58.8%	23.8%	\$2,848,893	\$4,841,724	
	<b>Total Expenditures</b>		<b>14.3%</b>		<b>\$5,896,479</b>	<b>\$41,304,848</b>		<b>15.3%</b>		<b>\$6,629,693</b>	<b>\$43,375,498</b>	

**B. Assessment of Attainment of HUB Procurement Goals**

**Attainment:**

UHV exceeded the HUB procurement goal for Commodities in 2020 & 2021 and Commodities.

**Applicability:**

Heavy Construction is not applicable to UHV in either fiscal year 2020 or fiscal year 2021 since the agency did not have any strategies or programs related to Heavy Construction.

**Factors Affecting Attainment:**

UHV is unable to meet the goals for Professional Services and Other Services, because there are few HUB vendors of each category in the UHV area, and the services do not required, do not warrant bringing in vendors from outside the region.

**C. Good-Faith Efforts to Increase HUB Participation**

**Outreach Efforts and Mentor-Protégé Programs:**

UHV did not participate in the mentor-protégé program in the 2020-21 biennium, nor sponsor any partnerships. UHV did attend the HUB Virtual Spot Bid Fair hosted by Senator Royce on May 2-3, 2022 by providing HUB eligible opportunities on our campus.

**HUB Program Staffing:**

**6.A. Historically Underutilized Business Supporting Schedule**  
88th Regular Session, Agency Submission, Version 1  
Automated Budget and Evaluation System of Texas (ABEST)

Date: **8/12/2022**  
Time: **10:17:15AM**

---

Agency Code: **765**      Agency: **University of Houston - Victoria**

We recently hired a new Purchasing Manager with 21+ years' experience working with HUB vendors in and around the Victoria area. His expertise and connections to HUB vendors in our area will help us make better contacts with HUB eligible vendors in the years to come. Monthly e-mails will be sent to all departments to keep them informed of their HUB % spending, discuss missed HUB eligible opportunities and we will provide the updated HUB master list posted on the Comptrollers website to all departments. With these efforts we hope to make departments more aware of what expectations are and what to look for before procuring services or goods.

**Current and Future Good-Faith Efforts:**

The agency made the following good faith efforts to comply with statewide HUB procurement goals per 1 TAC Section 111.13(c):

- 1) The Purchasing Department provides monthly summary reports to the University departments to notify departments of cumulative HUB expenditures that have been made during the fiscal year and to compare those numbers to the previous fiscal year. Additionally, purchase vouchers and procurement card transactions are routinely monitored for possible future HUB purchase opportunities.
- 2) UHV Purchasing personnel attend HUB vendor fairs to network and seek additional HUB vendors.
- 3) The University continues its partnership with the Small Business Development Center on campus to assist area small minority-owned and woman-owned businesses offering services or products used by the University to become certified HUB vendors.
- 4) The University President stated the importance of HUB participation in the President's Cabinet meeting and by letter to all supervisors at the University.

## 6.H Estimated Funds Outside the Institution's Bill Pattern

**University of Houston-Victoria (765)**  
**Estimated Funds Outside the Institution's Bill Pattern**  
**2022-23 and 2024-25 Biennia**

	2022-23 Biennium				2024-25 Biennium			
	<u>FY 2022 Revenue</u>	<u>FY 2023 Revenue</u>	<u>Biennium Total</u>	<u>Percent of Total</u>	<u>FY 2024 Revenue</u>	<u>FY 2025 Revenue</u>	<u>Biennium Total</u>	<u>Percent of Total</u>
<b>APPROPRIATED SOURCES INSIDE THE BILL PATTERN</b>								
State Appropriations (excluding HEGI & State Paid Fringes)	\$ 15,481,288	\$ 15,480,729	\$ 30,962,017		\$ 15,480,729	\$ 15,480,729	\$ 30,961,458	
Tuition and Fees (net of Discounts and Allowances)	4,639,458	4,688,953	9,328,411		4,688,953	4,688,953	9,377,906	
Endowment and Interest Income	6,947	14,123	21,070		14,123	14,123	28,246	
Sales and Services of Educational Activities (net)	-	-	-		-	-	-	
Sales and Services of Hospitals (net)	-	-	-		-	-	-	
Other Income	-	-	-		-	-	-	
Total	<u>20,127,693</u>	<u>20,183,805</u>	<u>40,311,498</u>	<u>30.1%</u>	<u>20,183,805</u>	<u>20,183,805</u>	<u>40,367,610</u>	<u>30.3%</u>
<b>APPROPRIATED SOURCES OUTSIDE THE BILL PATTERN</b>								
State Appropriations (HEGI & State Paid Fringes)	\$ 3,789,366	\$ 3,729,449	\$ 7,518,815		\$ 3,729,449	\$ 3,729,449	\$ 7,458,898	
Higher Education Assistance Funds	3,542,817	3,542,817	\$ 7,085,634		3,542,817	3,542,817	\$ 7,085,634	
Available University Fund	-	-	\$ -		-	-	\$ -	
State Grants and Contracts	2,041,691	2,424,269	\$ 4,465,960		2,424,269	2,424,269	\$ 4,848,538	
Total	<u>9,373,874</u>	<u>9,696,535</u>	<u>19,070,409</u>	<u>14.2%</u>	<u>9,696,535</u>	<u>9,696,535</u>	<u>19,393,070</u>	<u>14.6%</u>
<b>NON-APPROPRIATED SOURCES</b>								
Tuition and Fees (net of Discounts and Allowances)	19,876,850	18,808,951	38,685,801		18,808,951	18,808,951	\$ 37,617,902	
Federal Grants and Contracts	12,809,175	12,809,175	25,618,350		12,809,175	12,809,175	\$ 25,618,350	
State Grants and Contracts	74,445	72,000	146,445		72,000	72,000	\$ 144,000	
Local Government Grants and Contracts	-	-	-		-	-	\$ -	
Private Gifts and Grants	1,872,173	1,872,173	3,744,346		1,872,173	1,872,173	\$ 3,744,346	
Endowment and Interest Income	595,137	595,137	1,190,274		595,137	595,137	\$ 1,190,274	
Sales and Services of Educational Activities (net)	396,503	396,508	793,011		396,503	396,503	\$ 793,006	
Sales and Services of Hospitals (net)	-	-	-		-	-	\$ -	
Professional Fees (net)	-	-	-		-	-	\$ -	
Auxiliary Enterprises (net)	2,004,087	2,406,873	4,410,960		2,046,873	2,046,873	\$ 4,093,746	
Other Income	55,157	55,000	110,157		55,000	55,000	\$ 110,000	
Total	<u>37,683,527</u>	<u>37,015,817</u>	<u>74,699,344</u>	<u>55.7%</u>	<u>36,655,812</u>	<u>36,655,812</u>	<u>73,311,624</u>	<u>55.1%</u>
<b>TOTAL SOURCES</b>	<u><u>\$ 67,185,094</u></u>	<u><u>\$ 66,896,157</u></u>	<u><u>\$ 134,081,251</u></u>	<u><u>100.0%</u></u>	<u><u>\$ 66,536,152</u></u>	<u><u>\$ 66,536,152</u></u>	<u><u>\$ 133,072,304</u></u>	<u><u>100.0%</u></u>

88th Regular Session, Agency Submission, Version 1  
Automated Budget and Evaluation System of Texas (ABEST)

<b>765 University of Houston - Victoria</b>					
	<b>Act 2021</b>	<b>Act 2022</b>	<b>Bud 2023</b>	<b>Est 2024</b>	<b>Est 2025</b>
<b>Gross Tuition</b>					
Gross Resident Tuition	6,003,523	5,273,120	5,409,650	5,409,650	5,409,650
Gross Non-Resident Tuition	1,366,956	1,503,697	1,746,701	1,746,701	1,746,701
<b>Gross Tuition</b>	<b>7,370,479</b>	<b>6,776,817</b>	<b>7,156,351</b>	<b>7,156,351</b>	<b>7,156,351</b>
Less: Resident Waivers and Exemptions (excludes Hazlewood)	(116,867)	(35,936)	(88,610)	(88,610)	(88,610)
Less: Non-Resident Waivers and Exemptions	(505,238)	(457,992)	(489,122)	(489,122)	(489,122)
Less: Hazlewood Exemptions	(187,415)	(147,888)	(174,998)	(174,998)	(174,998)
Less: Board Authorized Tuition Increases (TX. Educ. Code Ann. Sec. 54.008)	(1,103,411)	(1,025,082)	(828,600)	(828,600)	(828,600)
Less: Tuition increases charged to doctoral students with hours in excess of 100 (TX. Educ. Code Ann. Sec. 54.012)	0	0	0	0	0
Less: Tuition increases charged to undergraduate students with excessive hours above degree requirements. (TX. Educ. Code Ann. Sec. 61.0595)	0	0	0	0	0
Less: Tuition rebates for certain undergraduates (TX. Educ. Code Ann. Sec. 54.0065)	(4,000)	(8,000)	(7,000)	(7,000)	(7,000)
Plus: Tuition waived for Students 55 Years or Older (TX. Educ. Code Ann. Sec. 54.013)	0	0	0	0	0
Less: Tuition for repeated or excessive hours (TX. Educ. Code Ann. Sec. 54.014)	0	0	0	0	0
Plus: Tuition waived for Texas Grant Recipients (TX. Educ. Code Ann. Sec. 56.307)	0	0	0	0	0
<b>Subtotal</b>	<b>5,453,548</b>	<b>5,101,919</b>	<b>5,568,021</b>	<b>5,568,021</b>	<b>5,568,021</b>
Less: Transfer of funds for Texas Public Education Grants Program (Tex. Educ. Code Ann. Sec. 56c) and for Emergency Loans (Tex. Educ. Code Ann. Sec. 56d)	(720,731)	(648,143)	(708,235)	(708,235)	(708,235)
Less: Transfer of Funds (2%) for Physician/Dental Loans (Medical Schools)	0	0	0	0	0
Less: Statutory Tuition (Tx. Educ. Code Ann. Sec. 54.051) Set Aside for Doctoral Incentive Loan Repayment Program (Tx. Educ. Code Ann. Sec. 56.095)	0	0	0	0	0
Less: Other Authorized Deduction					
<b>Net Tuition</b>	<b>4,732,817</b>	<b>4,453,776</b>	<b>4,859,786</b>	<b>4,859,786</b>	<b>4,859,786</b>
Student Teaching Fees	2,604	2,259	2,000	2,000	2,000

88th Regular Session, Agency Submission, Version 1  
Automated Budget and Evaluation System of Texas (ABEST)

<b>765 University of Houston - Victoria</b>					
	<b>Act 2021</b>	<b>Act 2022</b>	<b>Bud 2023</b>	<b>Est 2024</b>	<b>Est 2025</b>
Special Course Fees	0	0	0	0	0
Laboratory Fees	0	0	0	0	0
<b>Subtotal, Tuition and Fees (Formula Amounts for Health-Related Institutions)</b>	<b>4,735,421</b>	<b>4,456,035</b>	<b>4,861,786</b>	<b>4,861,786</b>	<b>4,861,786</b>
<b>OTHER INCOME</b>					
<b>Interest on General Funds:</b>					
Local Funds in State Treasury	9,958	6,947	14,123	14,123	14,123
Funds in Local Depositories, e.g., local amounts	0	0	0	0	0
Other Income (Itemize)					
<b>Subtotal, Other Income</b>	<b>9,958</b>	<b>6,947</b>	<b>14,123</b>	<b>14,123</b>	<b>14,123</b>
<b>Subtotal, Other Educational and General Income</b>	<b>4,745,379</b>	<b>4,462,982</b>	<b>4,875,909</b>	<b>4,875,909</b>	<b>4,875,909</b>
Less: O.A.S.I. Applicable to Educational and General Local Funds Payrolls	(294,276)	(320,959)	(311,904)	(311,904)	(311,904)
Less: Teachers Retirement System and ORP Proportionality for Educational and General Funds	(287,492)	(315,559)	(308,235)	(308,235)	(308,235)
Less: Staff Group Insurance Premiums	(1,003,475)	(1,304,499)	(1,331,363)	(1,331,363)	(1,331,363)
<b>Total, Other Educational and General Income (Formula Amounts for General Academic Institutions)</b>	<b>3,160,136</b>	<b>2,521,965</b>	<b>2,924,407</b>	<b>2,924,407</b>	<b>2,924,407</b>
<b>Reconciliation to Summary of Request for FY 2019-2021:</b>					
Plus: Transfer of Funds for Texas Public Education Grants Program and Physician Loans	720,732	648,143	708,235	708,235	708,235
Plus: Transfer of Funds 2% for Physician/Dental Loans (Medical Schools)	0	0	0	0	0
Plus: Transfer of Funds for Cancellation of Student Loans of Physicians	0	0	0	0	0
Plus: Organized Activities	0	0	0	0	0
Plus: Staff Group Insurance Premiums	1,003,475	1,304,499	1,331,363	1,331,363	1,331,363
Plus: Board-authorized Tuition Income	1,103,411	1,025,082	828,600	828,600	828,600
Plus: Tuition Increases Charged to Doctoral Students with Hours in Excess of 100	0	0	0	0	0
Plus: Tuition Increases Charged to Undergraduate Students with Excessive Hours above Degree Requirements (TX. Educ. Code Ann. Sec. 61.0595)	0	0	0	0	0

88th Regular Session, Agency Submission, Version 1  
Automated Budget and Evaluation System of Texas (ABEST)

<b>765 University of Houston - Victoria</b>					
	<b>Act 2021</b>	<b>Act 2022</b>	<b>Bud 2023</b>	<b>Est 2024</b>	<b>Est 2025</b>
Plus: Tuition rebates for certain undergraduates (TX Educ.Code Ann. Sec. 54.0065)	4,000	8,000	7,000	7,000	7,000
Plus: Tuition for repeated or excessive hours (TX. Educ. Code Ann. Sec. 54.014)	0	0	0	0	0
Less: Tuition Waived for Students 55 Years or Older	0	0	0	0	0
Less: Tuition Waived for Texas Grant Recipients	0	0	0	0	0
<b>Total, Other Educational and General Income Reported on Summary of Request</b>	<b>5,991,754</b>	<b>5,507,689</b>	<b>5,799,605</b>	<b>5,799,605</b>	<b>5,799,605</b>



## Schedule 2: Selected Educational, General and Other Funds

8/12/2022 10:17:15AM

88th Regular Session, Agency Submission, Version 1  
Automated Budget and Evaluation System of Texas (ABEST)

765 University of Houston - Victoria					
	Act 2021	Act 2022	Bud 2023	Est 2024	Est 2025
General Revenue Transfers					
Transfer from Coordinating Board for Texas College Work Study Program (2021, 2022, 2023)	2,582	1,829	23,612	23,612	23,612
Transfer from Coordinating Board for Professional Nursing Shortage Reduction Program	0	0	0	0	0
Transfer of GR Group Insurance Premium from Comptroller (UT and TAMU Components only)	0	0	0	0	0
Less: Transfer to Other Institutions	0	0	0	0	0
Less: Transfer to Department of Health, Disproportionate Share - State-Owned Hospitals (2021, 2022, 2023)	0	0	0	0	0
Other (Itemize)					
Hazlewood	55,901	60,740	64,627	64,627	64,627
Educational Aide Program	5,909	0	0	0	0
Joint Admission Medical Program (JAMP)	101,900	4,844	0	0	0
Other: Fifth Year Accounting Scholarship	3,000	0	0	0	0
Texas Grants	2,032,695	2,035,018	2,336,030	2,336,030	2,336,030
B-on-Time Program	0	0	0	0	0
Less: Transfer to System Administration	0	0	0	0	0
Texas Research Incentive Program	0	0	0	0	0
GME Expansion	0	0	0	0	0
<b>Subtotal, General Revenue Transfers</b>	<b>2,201,987</b>	<b>2,102,431</b>	<b>2,424,269</b>	<b>2,424,269</b>	<b>2,424,269</b>
General Revenue HEF	3,542,817	3,542,817	3,542,817	3,542,817	3,542,817
Transfer from Available University Funds (UT, A&M and Prairie View A&M Only)	0	0	0	0	0
Other Additions (Itemize)					
Increase Capital Projects - Educational and General Funds	0	0	0	0	0
Transfer from Department of Health, Disproportionate Share - State-owned Hospitals (2021, 2022, 2023)	0	0	0	0	0
Transfers from Other Funds, e.g., Designated funds transferred for educational and general activities (Itemize)	0	0	0	0	0
Other (Itemize)					
<b>Gross Designated Tuition (Sec. 54.0513)</b>	<b>18,327,486</b>	<b>16,730,228</b>	<b>16,485,628</b>	<b>16,485,628</b>	<b>16,485,628</b>

**Schedule 2: Selected Educational, General and Other Funds**

8/12/2022 10:17:15AM

88th Regular Session, Agency Submission, Version 1  
Automated Budget and Evaluation System of Texas (ABEST)

---

<b>765 University of Houston - Victoria</b>					
	<b>Act 2021</b>	<b>Act 2022</b>	<b>Bud 2023</b>	<b>Est 2024</b>	<b>Est 2025</b>
<b>Indirect Cost Recovery (Sec. 145.001(d))</b>	<b>25,816</b>	<b>29,317</b>	<b>27,566</b>	<b>27,566</b>	<b>27,566</b>
<b>Correctional Managed Care Contracts</b>	<b>0</b>	<b>0</b>	<b>0</b>	<b>0</b>	<b>0</b>

**Schedule 3A: Staff Group Insurance Data Elements (ERS)**  
88th Regular Session, Agency Submission, Version 1  
Automated Budget and Evaluation System of Texas (ABEST)

8/12/2022 10:17:16AM

**765 University of Houston - Victoria**

	<b>E&amp;G Enrollment</b>	<b>GR Enrollment</b>	<b>GR-D/OEGI Enrollment</b>	<b>Total E&amp;G (Check)</b>	<b>Local Non-E&amp;G</b>
<b>GR &amp; GR-D Percentages</b>					
GR %	76.44%				
GR-D/Other %	23.56%				
<b>Total Percentage</b>	100.00%				
<b>FULL TIME ACTIVES</b>					
1a Employee Only	136	104	32	136	113
2a Employee and Children	42	32	10	42	17
3a Employee and Spouse	23	18	5	23	10
4a Employee and Family	37	28	9	37	15
5a Eligible, Opt Out	2	2	0	2	1
6a Eligible, Not Enrolled	11	8	3	11	12
<b>Total for This Section</b>	<b>251</b>	<b>192</b>	<b>59</b>	<b>251</b>	<b>168</b>
<b>PART TIME ACTIVES</b>					
1b Employee Only	0	0	0	0	0
2b Employee and Children	1	1	0	1	0
3b Employee and Spouse	0	0	0	0	0
4b Employee and Family	0	0	0	0	0
5b Eligible, Opt Out	1	1	0	1	0
6b Eligible, Not Enrolled	2	2	0	2	4
<b>Total for This Section</b>	<b>4</b>	<b>4</b>	<b>0</b>	<b>4</b>	<b>4</b>
<b>Total Active Enrollment</b>	<b>255</b>	<b>196</b>	<b>59</b>	<b>255</b>	<b>172</b>

**Schedule 3A: Staff Group Insurance Data Elements (ERS)**  
88th Regular Session, Agency Submission, Version 1  
Automated Budget and Evaluation System of Texas (ABEST)

8/12/2022 10:17:16AM

**765 University of Houston - Victoria**

	<b>E&amp;G Enrollment</b>	<b>GR Enrollment</b>	<b>GR-D/OEGI Enrollment</b>	<b>Total E&amp;G (Check)</b>	<b>Local Non-E&amp;G</b>
<b>FULL TIME RETIREES by ERS</b>					
1c Employee Only	0	0	0	0	0
2c Employee and Children	0	0	0	0	0
3c Employee and Spouse	0	0	0	0	0
4c Employee and Family	0	0	0	0	0
5c Eligible, Opt Out	0	0	0	0	0
6c Eligible, Not Enrolled	0	0	0	0	0
<b>Total for This Section</b>	<b>0</b>	<b>0</b>	<b>0</b>	<b>0</b>	<b>0</b>
<b>PART TIME RETIREES by ERS</b>					
1d Employee Only	0	0	0	0	0
2d Employee and Children	0	0	0	0	0
3d Employee and Spouse	0	0	0	0	0
4d Employee and Family	0	0	0	0	0
5d Eligible, Opt Out	0	0	0	0	0
6d Eligible, Not Enrolled	0	0	0	0	0
<b>Total for This Section</b>	<b>0</b>	<b>0</b>	<b>0</b>	<b>0</b>	<b>0</b>
<b>Total Retirees Enrollment</b>	<b>0</b>	<b>0</b>	<b>0</b>	<b>0</b>	<b>0</b>
<b>TOTAL FULL TIME ENROLLMENT</b>					
1e Employee Only	136	104	32	136	113
2e Employee and Children	42	32	10	42	17
3e Employee and Spouse	23	18	5	23	10
4e Employee and Family	37	28	9	37	15
5e Eligible, Opt Out	2	2	0	2	1
6e Eligible, Not Enrolled	11	8	3	11	12
<b>Total for This Section</b>	<b>251</b>	<b>192</b>	<b>59</b>	<b>251</b>	<b>168</b>

**Schedule 3A: Staff Group Insurance Data Elements (ERS)**

8/12/2022 10:17:16AM

88th Regular Session, Agency Submission, Version 1

Automated Budget and Evaluation System of Texas (ABEST)

**765 University of Houston - Victoria**

	<b>E&amp;G Enrollment</b>	<b>GR Enrollment</b>	<b>GR-D/OEGI Enrollment</b>	<b>Total E&amp;G (Check)</b>	<b>Local Non-E&amp;G</b>
<b>TOTAL ENROLLMENT</b>					
1f Employee Only	136	104	32	136	113
2f Employee and Children	43	33	10	43	17
3f Employee and Spouse	23	18	5	23	10
4f Employee and Family	37	28	9	37	15
5f Eligible, Opt Out	3	3	0	3	1
6f Eligible, Not Enrolled	13	10	3	13	16
<b>Total for This Section</b>	<b>255</b>	<b>196</b>	<b>59</b>	<b>255</b>	<b>172</b>

**Schedule 4: Computation of OASI**  
88th Regular Session, Agency Submission, Version 1  
Automated Budget and Evaluation System of Texas (ABEST)

**Agency 765 University of Houston - Victoria**

Proportionality Percentage Based on Comptroller Accounting Policy Statement #011, Exhibit 2	2021		2022		2023		2024		2025	
	<u>% to Total</u>	<u>Allocation of OASI</u>	<u>% to Total</u>	<u>Allocation of OASI</u>	<u>% to Total</u>	<u>Allocation of OASI</u>	<u>% to Total</u>	<u>Allocation of OASI</u>	<u>% to Total</u>	<u>Allocation of OASI</u>
General Revenue (% to Total)	76.4411	\$954,831	76.5000	\$1,044,822	76.4411	\$1,012,028	76.4411	\$1,012,028	76.4411	\$1,012,028
Other Educational and General Funds (% to Total)	23.5589	\$294,276	23.5000	\$320,959	23.5589	\$311,904	23.5589	\$311,904	23.5589	\$311,904
Health-Related Institutions Patient Income (% to Total)	0.0000	\$0	0.0000	\$0	0.0000	\$0	0.0000	\$0	0.0000	\$0
<b>Grand Total, OASI (100%)</b>	100.0000	<b>\$1,249,107</b>	100.0000	<b>\$1,365,781</b>	100.0000	<b>\$1,323,932</b>	100.0000	<b>\$1,323,932</b>	100.0000	<b>\$1,323,932</b>

**Schedule 5: Calculation of Retirement Proportionality and ORP Differential**

8/12/2022 10:17:16AM

88th Regular Session, Agency Submission, Version 1

Automated Budget and Evaluation System of Texas (ABEST)

**765 University of Houston - Victoria**

Description	Act 2021	Act 2022	Bud 2023	Est 2024	Est 2025
<b>Proportionality Amounts</b>					
Gross Educational and General Payroll - Subject To TRS Retirement	9,857,067	11,529,480	10,516,488	10,516,488	10,516,488
Employer Contribution to TRS Retirement Programs	788,565	922,358	841,319	841,319	841,319
Gross Educational and General Payroll - Subject To ORP Retirement	6,541,567	6,370,410	7,076,364	7,076,364	7,076,364
Employer Contribution to ORP Retirement Programs	431,743	420,447	467,040	467,040	467,040
<b>Proportionality Percentage</b>					
General Revenue	76.4411 %	76.5000 %	76.4411 %	76.4411 %	76.4411 %
Other Educational and General Income	23.5589 %	23.5000 %	23.5589 %	23.5589 %	23.5589 %
Health-related Institutions Patient Income	0.0000 %	0.0000 %	0.0000 %	0.0000 %	0.0000 %
<b>Proportional Contribution</b>					
Other Educational and General Proportional Contribution (Other E&G percentage x Total Employer Contribution to Retirement Programs)	287,491	315,559	308,235	308,235	308,235
HRI Patient Income Proportional Contribution (HRI Patient Income percentage x Total Employer Contribution To Retirement Programs)	0	0	0	0	0
<b>Differential</b>					
Differential Percentage	1.9000 %	1.9000 %	1.9000 %	1.9000 %	1.9000 %
Gross Payroll Subject to Differential - Optional Retirement Program	1,220,309	1,342,805	1,561,211	1,561,211	1,561,211
<b>Total Differential</b>	23,186	25,513	29,663	29,663	29,663

**Schedule 6: Constitutional Capital Funding**  
88th Regular Session, Agency Submission, Version 1  
Automated Budget and Evaluation System of Texas (ABEST)

8/12/2022 10:17:16AM

<b>765 University of Houston - Victoria</b>					
<b>Activity</b>	<b>Act 2021</b>	<b>Act 2022</b>	<b>Bud 2023</b>	<b>Est 2024</b>	<b>Est 2025</b>
A. PUF Bond Proceeds Allocation	0	0	0	0	0
Project Allocation					
Library Acquisitions	0	0	0	0	0
Construction, Repairs and Renovations	0	0	0	0	0
Furnishings & Equipment	0	0	0	0	0
Computer Equipment & Infrastructure	0	0	0	0	0
Reserve for Future Consideration	0	0	0	0	0
Other (Itemize)					
B. HEF General Revenue Allocation	3,542,817	3,542,817	3,542,817	3,542,817	3,542,817
Project Allocation					
Library Acquisitions	79,894	194,358	447,371	447,371	447,371
Construction, Repairs and Renovations	20,761	372,205	109,500	109,500	109,500
Furnishings & Equipment	643,860	574,760	411,233	411,233	411,233
Computer Equipment & Infrastructure	1,412,961	1,610,619	1,424,540	1,424,540	1,424,540
Reserve for Future Consideration	596,716	0	362,923	362,923	362,923
HEF for Debt Service	788,625	790,875	787,250	787,250	787,250
Other (Itemize)					



**Schedule 7: Personnel**  
88th Regular Session, Agency Submission, Version 1  
Automated Budget and Evaluation System of Texas (ABEST)

Date: 8/12/2022  
Time: 10:17:17AM

Agency code: **765**      Agency name: **University of Houston - Victoria**

	Actual 2021	Actual 2022	Budgeted 2023	Estimated 2024	Estimated 2025
<b>Part A.</b>					
<b>FTE Postions</b>					
<b>Directly Appropriated Funds (Bill Pattern)</b>					
Educational and General Funds Faculty Employees	131.3	131.8	133.8	133.8	133.8
Educational and General Funds Non-Faculty Employees	107.6	114.1	114.1	114.1	114.1
<b>Subtotal, Directly Appropriated Funds</b>	<b>238.9</b>	<b>245.9</b>	<b>247.9</b>	<b>247.9</b>	<b>247.9</b>
Non Appropriated Funds Employees	245.2	242.6	242.6	242.6	242.6
<b>Subtotal, Other Funds &amp; Non-Appropriated</b>	<b>245.2</b>	<b>242.6</b>	<b>242.6</b>	<b>242.6</b>	<b>242.6</b>
<b>GRAND TOTAL</b>	<b>484.1</b>	<b>488.5</b>	<b>490.5</b>	<b>490.5</b>	<b>490.5</b>

**Schedule 8B: Tuition Revenue Bond Issuance History**

8/12/2022 11:47:16AM

88th Regular Session, Agency Submission, Version 1  
Automated Budget and Evaluation System of Texas (ABEST)

<b>765 University of Houston - Victoria</b>						
<b>Authorization Date</b>	<b>Authorization Amount</b>	<b>Issuance Date</b>	<b>Issuance Amount</b>	<b>Authorized Amount Outstanding as of 08/31/2022</b>	<b>Proposed Issuance Date for Outstanding Authorization</b>	<b>Proposed Issuance Amount for Outstanding Authorization</b>
1995	\$9,000,000	Aug 28 1997 Feb 10 1999	\$5,150,000 \$3,850,000			
		<b>Subtotal</b>	\$9,000,000	\$0		
					Aug 31 2020	\$0
1997	\$10,000,000	Feb 10 1999	\$10,000,000			
		<b>Subtotal</b>	\$10,000,000	\$0		
					Aug 31 2020	\$0
2001	\$2,805,000	Oct 9 2002	\$2,080,500			
		<b>Subtotal</b>	\$2,080,500	\$724,500		
					Aug 31 2020	\$0
2006	\$31,419,400	Jul 21 2008	\$31,419,400			
		<b>Subtotal</b>	\$31,419,400	\$0		
					Aug 31 2020	\$0
2016	\$249,225,000	Feb 16 2017 Dec 21 2017	\$42,955,525 \$6,269,475			
		<b>Subtotal</b>	\$49,225,000	\$200,000,000		
					Aug 31 2020	\$10,775,000
2022	\$44,922,833	Jun 29 2022	\$44,922,833			
		<b>Subtotal</b>	\$44,922,833	\$0		
					Jun 29 2022	\$0

---

**765 University of Houston - Victoria**

---

**COVID-19 Continued Impact Funding**

<b>(1) Year Non-Formula Support Item First Funded:</b>	2022
Year Non-Formula Support Item Established:	2022
Original Appropriation:	\$3,520,671

**(2) Mission:**

UHV has received \$13,830,067 in Higher Education Emergency Relief Funds (HEERF) of which \$1,464,851 offset reduced state appropriations in FY 20 and FY 21.

Actual costs of the impact of COVID 19 to UHV exceeded \$24.2 million in lost revenues and additional associated expenses in FY 20, FY 21, and FY 22. UHV's rural location and student diversity with first-generation college students have been especially impacted by the pandemic and enrollment-based tuition and fee revenues have declined by over \$5.9 million in FY 22. In FY 2022 \$3,520,671 HEERF funds recovered for lost revenues were utilized for operating budget deficits. UHV requests hold harmless funding for faculty salaries and utilities.

**(3) (a) Major Accomplishments to Date:**

None

**(3) (b) Major Accomplishments Expected During the Next 2 Years:**

N/A

**(4) Funding Source Prior to Receiving Non-Formula Support Funding:**

Federal HEERF Funds

**(5) Formula Funding:**

None

**(6) Category:**

Instructional Support

**(7) Transitional Funding:**

N

**(8) Non-General Revenue Sources of Funding:**

---

**765 University of Houston - Victoria**

---

**(9) Impact of Not Funding:**

COVID-19 is continuing to impact UHV. Federal relief funds and reduced expenses helped with the initial financial impacts. Longer term impacts such as rapid inflation, a competitive market drawing away our best employees and lagging student enrollment will cause financial pressures on the university in the years to come. With declines in student enrollments, and corresponding decreases in tuition, fee, and auxiliary revenues, significant challenges are occurring for financial sustainability. Without funding the core mission of UHV to provide access to first -generation, low-income, minority and rural populations will be negatively impacted.

**(10) Non-Formula Support Needed on Permanent Basis/Discontinuu**

None

**(11) Non-Formula Support Associated with Time Frame:**

N/A

**(12) Benchmarks:**

N/A

**(13) Performance Reviews:**

N/A

---

---

**765 University of Houston - Victoria**

---

**Community of Practice Centers for Mental Health**

<b>(1) Year Non-Formula Support Item First Funded:</b>	2024
Year Non-Formula Support Item Established:	2024
Original Appropriation:	\$0

**(2) Mission:**

UHV seeks funding to establish two Community of Practice Centers with mental health clinics in Katy and Victoria in order to respond to the growing mental health needs of these regions and in response to the national mental health crisis that has accelerated since the COVID-19 pandemic. Each year, 1 in 5 U.S. adults and 1 in 6 youths experience mental illness, which has broader implications to the community at large. On the other hand, there is a shortage of mental health practitioners and counseling professionals. The two Community of Practice Centers will involve UHV's Counseling Training Clinics in Katy and Victoria and will partner with all impacted groups such as K-12 schools, the justice system, and community based programs to share best practices and create new knowledge about care and service related to mental health. The clinics will provide access to a variety of affordable mental health care and professional counseling to the Katy and Victoria communities while the Community of Practice Centers will serve as a mechanism to collect and disseminate information and data related to mental health.

UHV is requesting \$1,252,885 for the biennium.(\$826,090 FY24 and \$426,795 FY25)

**(3) (a) Major Accomplishments to Date:**

None

**(3) (b) Major Accomplishments Expected During the Next 2 Years:**

UHV is well positioned to implement the Community of Practice Center for Mental Health in Katy and Victoria as the Clinical Mental Health Counseling Program is Council for Accreditation of Counseling and Related Education Programs (CACREP) accredited and the graduate students in the Counseling and Forensic Psychology are closely supervised by well-qualified faculty members who prepare our graduates to become ethical, evidence-based practitioners of counseling. We anticipate that the two Community of Practice Centers for Mental Health in Katy and Victoria will be able to help respond to the mental health care professional shortage in Katy and Victoria in working with UHV's Clinical Mental Health Program and Counseling/Forensic Psychology Program, by creating a pipeline of future mental health care practitioners who are likely to continue to practice in the same regions as their respective training clinics.

**(4) Funding Source Prior to Receiving Non-Formula Support Funding:**

None

**(5) Formula Funding:**

NA

**(6) Category:**

Public Service

---

**765 University of Houston - Victoria**

---

**(7) Transitional Funding:**

N

**(8) Non-General Revenue Sources of Funding:**

NA

**(9) Impact of Not Funding:**

UHV graduate program in Counseling and Forensic Psychology is committed to helping address the growing mental health needs of the region and responding to the national mental health crisis that has accelerated since the COVID-19 pandemic. With this special item the shortage of mental health practitioners and counseling professionals can be addressed. Without funding, the growth of the program and ability to impact the mental health practitioners and counseling professionals' shortage will be negatively impacted.

**(10) Non-Formula Support Needed on Permanent Basis/Discontinuation:**

NA

**(11) Non-Formula Support Associated with Time Frame:**

NA

**(12) Benchmarks:**

N/A

**(13) Performance Reviews:**

N/A

---

---

**765 University of Houston - Victoria**

---

**Institutional Enhancement**

<b>(1) Year Non-Formula Support Item First Funded:</b>	2000
Year Non-Formula Support Item Established:	2000
Original Appropriation:	\$5,035,868

**(2) Mission:**

UHV is succeeding in the initial phases of downward expansion and continues to expand its academic and extracurricular programs within the region to meet the needs of a large, diverse service population through its off-campus delivery sites and on-line programs. These funds have allowed UHV to hire additional qualified faculty to support past enrollment growth, to provide quality instructional labs, and to establish new academic programs. Distance learning programs and courses are offered by traditional face-to-face and interactive television (ITV) at our two off-campus locations in UHV Katy, Texas.

UHV is requesting continued funding of \$5,035,868 per biennium (\$2,517,935 per year)

**(3) (a) Major Accomplishments to Date:**

Through a partnership of the UH System universities and the local community college, the UH System Centers provide upper-level and graduate courses leading to bachelor's and master's degrees in a variety of fields. This collaboration expands access to quality educational courses and programs. UHV remains a national leader in online learning with several degrees and most courses available in distance education.

**(3) (b) Major Accomplishments Expected During the Next 2 Years:**

If UHV is to address the educational needs of its service area and increase enrollments in an educationally underserved area, it must strive to offer a wide array of academic programs. Therefore, UHV will continue to expand its academic programs to meet the needs of a large diverse service population through off-campus delivery sites and on-line programs as well as traditional face-to-face academic offerings. In addition, international partnerships will be developed for UHV students to study abroad.

**(4) Funding Source Prior to Receiving Non-Formula Support Funding:**

None

**(5) Formula Funding:**

None

**(6) Category:**

Institutional Enhancement

**(7) Transitional Funding:**

N

---

**765 University of Houston - Victoria**

---

**(8) Non-General Revenue Sources of Funding:**

None

**(9) Impact of Not Funding:**

These funds are vital to the continued support of the University's goals and strategies and current expansion programs to meet the state's 60x30TX initiative.

**(10) Non-Formula Support Needed on Permanent Basis/Discontinuu**

Permanent basis

**(11) Non-Formula Support Associated with Time Frame:**

N/A

**(12) Benchmarks:**

N/A

**(13) Performance Reviews:**

N/A

---



---

**765 University of Houston - Victoria**

---

**Small Business Development Center (SBDC)**

<b>(1) Year Non-Formula Support Item First Funded:</b>	1985
Year Non-Formula Support Item Established:	1985
Original Appropriation:	\$306,353

**(2) Mission:**

The University of Houston-Victoria Small Business Development Center (UHV-SBDC) serves 11 rural, underserved, counties. The mission of the SBDC is to promote small business development through extension services and to promote the growth, expansion, innovation, increased productivity, and improved management of small business. This is achieved through activities of individual business advising and technical assistance, training seminars and advocacy. SBDCs are a revenue positive organization to the State, funded by a combination of state and federal dollars. The UHV-SBDC is a part of the Texas South-West Small Business Development Center Network which services 79 counties in Texas.

Currently, small businesses across the region are reacting to the devastating effects of COVID, inflation, supply chain disruptions, workforce shortages, lack of broadband both in underserved urban and rural areas and are turning to the SBDCs for assistance. The need for services in the UHV-SBDC region is outpacing the resources to meet that need. UHV and the Texas South-West SBDC Network will be coordinating with SBDC Administrators across the state, to request additional appropriations to support the demand for SBDC and services.

UHV is requesting \$591,388 per biennium (\$295,694 per year)

**(3) (a) Major Accomplishments to Date:**

During 2021 UHV-SBDC assisted 320 small businesses through 2,500 hours of service. Staff created and retained 155 new jobs, started 17 businesses, and helped access \$4.5M in capital formation. Training was also provided to over 560 small business attendees.

**(3) (b) Major Accomplishments Expected During the Next 2 Years:**

UHV-SBDC played a huge role assisting small businesses access and manage COVID survival and recovery by continuing to utilize SBA disaster loans and other assistance provided by private and public lenders. Small business recovery will continue well into the 2024-25 biennium and beyond. Many Texas rural communities often lack the economic development capacity and need technical assistance, information and resources in a hands-on way. Funding for 2024-25 will sustain and expand economic and small business resources to a historically underserved, rural, territory. This will assist rural Texas businesses and communities achieve greater success creating jobs and investments.

**(4) Funding Source Prior to Receiving Non-Formula Support Funding:**

None

**(5) Formula Funding:**

None

---

**765 University of Houston - Victoria**

---

**(6) Category:**

Economic Development

**(7) Transitional Funding:**

N

**(8) Non-General Revenue Sources of Funding:**

2016 to present - State of Texas; \$101,610 Federal Funding; \$5,000-Estimated Program Income through revenue generating activities.

**(9) Impact of Not Funding:**

The economic growth and recovery from COVID-19 results by SBDCs for the Texas economy and our small businesses commensurately reduced. There would be a loss of federal funds available to support business development extension-services in the 79-county South- West Texas Border Region, which includes the 11 county region of the University of Houston-Victoria SBDC. Reduced client services, staff position terminations and student learning activities affected commensurately with funding reductions or loss. Many small businesses not able to take advantage of no-cost business advising that prepares them for survival, access capital for growth that consequently contribute to the State of Texas economy in terms of tax revenue.

**(10) Non-Formula Support Needed on Permanent Basis/Discontinuu**

Permanent Basis

**(11) Non-Formula Support Associated with Time Frame:**

N/A

**(12) Benchmarks:**

N/A

**(13) Performance Reviews:**

N/A

---