

Legislative Appropriations Request

For Fiscal Years 2022 and 2023

Submitted to the
Governor's Office of Budget, Planning and Policy
and the Legislative Budget Board

by

Texas A&M Veterinary Medical Diagnostic Laboratory



September 18, 2020

This page intentionally left blank.

TEXAS A&M VETERINARY MEDICAL DIAGNOSTIC LABORATORY

TABLE OF CONTENTS

Page

| | |
|---|----|
| Administrator's Statement | 1 |
| Organizational Chart..... | 8 |
| Certificate of Dual Submissions | 11 |
| Budget Overview – Biennial Amounts | 13 |
| Summary of Request | |
| 2.A. Summary of Base Request by Strategy..... | 14 |
| 2.B. Summary of Base Request by Method of Finance..... | 18 |
| 2.C. Summary of Base Request Object of Expense..... | 23 |
| 2.D. Summary of Base Request Objective Outcomes | 24 |
| 2.E. Summary of Exceptional Items Request | 25 |
| 2.F. Summary of Total Request by Strategy..... | 26 |
| 2.G. Summary of Total Request Objective Outcomes..... | 28 |
| General Revenue (GR) & General Revenue Dedicated (GR-D) Baseline Report..... | 30 |
| 3.A. Strategy Request | 32 |
| 3.A.1 Program Level Request Schedule | 51 |
| 3.B. Rider Revisions and Additions Request..... | 53 |
| Exceptional Item | |
| 4.A. Exceptional Item Request Schedule..... | 54 |
| 4.B. Exceptional Item Strategy Allocation Schedule..... | 58 |
| 4.C. Exceptional Item Strategy Request | 60 |
| Supporting Schedules: | |
| 6.A. Historically Underutilized Business Supporting Schedule | 62 |
| 6.G Homeland Security Funding Schedule | 64 |
| 6.H. Estimated Funds Outside the Agency's Bill Pattern..... | 67 |
| 6.L. Document Production Standards | 68 |
| Schedule 3B - - Staff Group Insurance Data Elements..... | 69 |
| Schedule 4 - - Computation of OASI..... | 72 |
| Schedule 5 - - Calculation of Retirement Proportionality and ORP Differential | 73 |
| Schedule 7 - - Personnel | 74 |

This page intentionally left blank.

TEXAS A&M VETERINARY MEDICAL DIAGNOSTIC LABORATORY

List of Schedules Not Included

- 2.C.1. Operating Costs Detail – Base Request Schedule
- 3.C. Rider Appropriations and Unexpended Balances Request
- 3.D Sub-Strategy Request
- 3.E Sub-Strategy Summary
- 5.A. Capital Budget Project Schedule
- 5.B. Capital Budget Project Information
- 5.C. Capital Budget Allocation to Strategies
- 5.D. Capital Budget Operating and Maintenance Expenses
- 5.E. Capital Budget Project: Object of Expense and Method of Financing by Strategy
- 6.B. Current Biennium One-time Expenditures
- 6.C. Federal Funds Supporting Schedule
- 6.D. Federal Funds Tracking Schedule
- 6.E. Estimated Revenue Collections Supporting Schedule
- 6.F. Advisory Committee Supporting Schedule
- 6.J. Behavioral Health Funding Schedule
- 6.K Part A Budgetary Impacts Related to Recently Enacted State Legislation Schedule
- 6.K Part B Summary of Costs Related to Recently Enacted State Legislation
- 7.A. Indirect Administrative and Support Costs Schedule
- 7.B Direct Administrative and Supporting Costs Schedule
- 8. Summary of Requests for Capital Project Financing

Schedule 1A – Other Educational and General Income

Schedule 1B – Health-Related Institutions Patient Income

Schedule 2 – Selected Educational, General and Other Funds

Schedule 6 – Capital Funding

Schedule 8A – Proposed Tuition Revenue Bond Projects

Schedule 8B – Tuition Revenue Bond Issuance History

Schedule 9 – Non-Formula Support

This page intentionally left blank.

Administrator's Statement

9/15/2020 10:58:56AM

87th Regular Session, Agency Submission, Version 1
Automated Budget and Evaluation System of Texas (ABEST)

557 Texas A&M Veterinary Medical Diagnostic Laboratory

Mission and Scope

The mission of the Texas A&M Veterinary Medical Diagnostic Laboratory (TVMDL) is to promote and protect animal health, public health, food safety and agricultural economic interests in Texas and beyond. Our vision is to be the global leader in providing innovative, state-of-the-art veterinary diagnostic services. The current pandemic has highlighted the profound impact testing has on maintaining surveillance on the human population. TVMDL's mission and purpose for testing have never been so important.

Created by the 60th Legislature in 1967, TVMDL is the only state agency with a mandate to provide veterinary diagnostic services to the citizens of Texas. TVMDL is a member of the Texas A&M University System and is governed by its Board of Regents. TVMDL provides rapid, accurate, state-of-the-art diagnoses for animal and zoonotic (infecting both humans and animals) diseases. Veterinary diagnostic laboratories (VDLs) are often the first line of detection for both the animal and public health sectors. VDLs must have disease diagnostic systems with both adequate capacity and capability for early detection and characterization of newly emergent, accidental, or intentionally introduced diseases, including potential bioterrorism events, as well as a sustained response to a disease outbreak. These capabilities and capacities have proven to be critical emergency response infrastructure, whether for an avian influenza outbreak or a human pandemic disease such as the coronavirus outbreak (COVID-19).

TVMDL is composed of four laboratories: two full service laboratories (College Station and Amarillo) and two poultry laboratories (Center and Gonzales). The full-service laboratories are staffed and equipped to provide the full range of diagnostic testing procedures in the disciplines of bacteriology, endocrinology, virology, mycology, serology, toxicology, molecular genetics and pathology for all species of livestock, poultry, companion animals and exotic animals. The TVMDL professional staff includes 23 veterinarians, most with advanced degrees (MS or PhD) and/or board certification. In addition, 8 staff with PhDs in various specialties round out the professional staff.

Samples submitted to TVMDL originate from all regions of Texas, the nation and the globe. Our testing provides an early detection, identification and response testing capacity for both routine and high consequence diseases (e.g. foot and mouth disease, avian influenza), vector-borne diseases (e.g. West Nile virus, Chaga's disease) and bioterrorism agents (e.g. plague, anthrax); provides diagnostic tests to aid in commerce (intrastate, interstate and international trade); provides drug testing for pari-mutuel racing animals and livestock shows; and contributes to the protection and health-of-animal/human interactions.

TVMDL is one of the highest volume veterinary diagnostic laboratories in the nation. It routinely receives and processes nearly 150,000 submissions and performs approximately 940,000 tests per year. The agency values its general revenue support which allows TVMDL to keep fees reasonable, so submissions stay at a critical mass for effective biosurveillance. The laboratory is accredited by the American Association of Veterinary Laboratory Diagnosticians (AAVLD), American Association for Laboratory Accreditation (ISO 17025) and the Racing Medication Testing Consortium (RMTTC). TVMDL is a Level 1 member of the USDA's National Animal Health Laboratory Network (NAHLN). Construction of a new headquarters laboratory in College Station was completed in 2016 and a new facility in Canyon, to replace the Amarillo laboratory, was completed in July, 2020. This has allowed TVMDL to enhance the technologies and services it provides to clients as well as meet the requirements to maintain accreditation as one of the premier veterinary diagnostic laboratories in the nation. As a NAHLN Level 1 laboratory, TVMDL participates in national targeted surveillance programs for foreign animal diseases that pose significant economic threats to Texas livestock and poultry. TVMDL staff routinely work with NAHLN partners and are leaders in establishing testing standards. In addition, we actively participate in critical preparedness and response training for a statewide or national animal/public health disease emergency.

Administrator's Statement

9/15/2020 10:58:56AM

87th Regular Session, Agency Submission, Version 1
 Automated Budget and Evaluation System of Texas (ABEST)

557 Texas A&M Veterinary Medical Diagnostic Laboratory

Current initiatives to strengthen TVMDL's diagnostic capabilities and capacity, thereby improving our preparedness and level of service, include: collaborating with other state agencies and Texas A&M University System components for the development, validation and implementation of new diagnostic technologies for endemic and high consequence pathogens; developing early detection and testing protocols which can provide surge testing capacities for responding to, and recovering from a foreign animal or zoonotic disease introduction; investing in infrastructure and equipment, with emphasis on advanced technology and robotics; development of an agency-specific high consequence disease diagnostic response plan; integration of TVMDL's emergency response plan with other local, state, and federal programs; enhancing our quality system to provide customers with validated, quality-controlled test results; and investments in current and future veterinary diagnosticians and homeland security professionals.

TVMDLs' Accomplishments and Their Impacts on the Citizens of Texas and the Agricultural Community:

- In addition to over 610,000 tests/year for domestic diseases, TVMDL performs over 333,000 assays annually for high consequence disease agents (e.g. foot and mouth disease, avian influenza). TVMDL's routine testing capacity is the backbone of an animal and zoonotic disease surveillance system for Texas.
- TVMDL plays a key role in facilitating livestock commerce, an industry worth nearly \$18 billion. Each month TVMDL performs an average of 12,700 tests to aid producers and animal owners in selling and transporting animals within the state, across state lines, and internationally.
- The American Association of Veterinary Laboratory Diagnosticians (AAVLD) conducted a five-year site review in May 2016, awarding TVMDL full accreditation for testing of all species. The Drug Testing Laboratory successfully completed accreditation by the Racing Medication Testing Consortium (RMTTC) in early 2016, to add to its previous ISO 1025 international accreditation. Such external, third party accreditations assure the quality and validity of our test results. TVMDL's quality management program provides a system for the ongoing monitoring of test performance and laboratory quality.
- TVMDL participates in USDA training and proficiency testing surveillance programs for high consequence pathogens such as highly pathogenic avian influenza ("bird-flu"), foot and mouth disease, exotic Newcastle disease, chronic wasting disease, scrapie, African swine fever and classical swine fever. TVMDL tests over 26,000 samples annually for these animal disease surveillance initiatives. In July 2015, TVMDL diagnosed the first case of chronic wasting disease (CWD) in captive-bred Texas deer. CWD is a progressive, fatal disease with no known treatment or cure which poses a severe threat to both wild and farmed deer. Since then, TVMDL has conducted over 155,000 tests for CWD to aid the Texas Animal Health Commission and the Texas Parks and Wildlife Department, as well as the nearly \$2.5 billion deer industry, in their response to this significant disease outbreak.
- In response to industry needs, TVMDL developed or implemented 37 new tests and panels during fiscal years 2018 and 2019.
- During FY19, TVMDL tested over 11,400 animals to ensure drug-free racing and livestock show events.
- In early 2018, as part of routine surveillance for avian influenza, TVMDL picked up a positive flock of birds just prior to being shipped to slaughter. The agency provided testing support for all follow up surveillance on multiple other farms with ties to the index farm, allowing regulators and the company to quickly determine the extent of the infection and successfully respond to prevent any further spread. This quick response also preserved vital markets, both nationally and internationally, for the entire poultry industry.

Administrator's Statement

9/15/2020 10:58:56AM

87th Regular Session, Agency Submission, Version 1
Automated Budget and Evaluation System of Texas (ABEST)

557 Texas A&M Veterinary Medical Diagnostic Laboratory

COVID-19 Activity

- In early 2020, TVMDL provided several types of support for the ongoing response to the COVID-19 (SARS-CoV-2) pandemic in Texas and the nation. Two TVMDL facilities (College Station and Amarillo) received certification under the HHS/CMS/CLIA program to conduct polymerase chain reaction (PCR) testing for COVID-19 on human samples. TVMDL partnered with local human healthcare institutions in each location to facilitate this testing. TVMDL was able to leverage its existing, specialized equipment, testing expertise and biocontainment facilities to add significant testing capacity to the response effort. Human COVID-19 testing will continue in these facilities for as long as deemed necessary.
- The COVID-19 pandemic emphasizes the need to maintain a robust biosurveillance for zoonotic diseases (those that are capable of jumping from animals to humans or vice versa). The COVID-19 coronavirus is one example, others include West Nile virus, rabies and salmonella. TVMDL's ongoing biosurveillance is critical to detecting zoonotic diseases early, when response has the best chance of stopping them.
- During the COVID-19 pandemic, all four TVMDL laboratory facilities maintained critical diagnostic testing services required by the livestock (beef, dairy, pork, sheep, goat) and poultry industries to maintain production of meat, milk, eggs and associated products. The livestock and poultry sector is a significant portion of the state's economy. Maintaining the food supply is also a significant public health issue.

Technical Budget Structure Change

TVMDL is requesting a bill pattern structure change to its method of finance, to become aligned with other institutions of higher education in Texas. The requested technical change was submitted to both the Legislative Budget Board and the Governor's Office of Budget, Policy and Planning during the budget structure change process in the spring of this year.

The bill pattern change requests the removal of "Other Funds" from its method of finance to allow the agency to maximize General Revenue available for employee and retiree benefits. The budget structure of the agency has created an unintended consequence in funding its employee and retiree benefits. Thirty years ago, the agency was funded 65% by general revenue, and 35% from generated fee revenue. As biennia have passed, that proportion in funding has shifted. The agency is now generating 70% of its total revenue stream through its fees. This funding change has gradually moved employee and retiree benefit costs away from state GIP and benefit appropriations, and onto TVMDL fee revenue, even though most retirees have spent most of their career paid from General Revenue. This change has created a funding deficit exceeding \$2 million between benefit costs and the amount of General Revenue received to pay for these costs. TVMDL needs a stable and sustainable revenue stream to help fund employee and retiree benefits. Removing "Other Funds" from the Method of Finance would open up additional GR funding to assist in paying these growing costs.

Infrastructure for Out of Brazos County Facilities

The four agriculture A&M System Agencies request that the funding for out-of-Brazos County infrastructure not be treated as a formula. The agencies request that out-of-Brazos County infrastructure be funded at the 2020-21 budgeted/expended level in each agency's base. Both the facilities and the costs associated with operating the facilities are fixed at each of the agencies and do not benefit by being forced into a formula. Unlike in-Brazos County infrastructure, types of square feet vary considerably out in the state among the four agencies making the application of a formula impracticable. There is no cost to the state to make this adjustment.

Administrator's Statement

9/15/2020 10:58:56AM

87th Regular Session, Agency Submission, Version 1
Automated Budget and Evaluation System of Texas (ABEST)

557 Texas A&M Veterinary Medical Diagnostic Laboratory

Exceptional Item: Rapid Detection of Human and Animal Disease Threats

Requested Amount: \$3,350,000

TVMDL recognizes the economic uncertainty facing the State of Texas and the incredible challenges we will confront in the months and years ahead. As the state continues to address the pandemic and its challenges, the mission of TVMDL and our contribution to disease outbreaks and response has never been so vital.

Now, more than ever, Texas needs to mitigate the effects of disease outbreaks on public health, food security, and the financial well-being of its citizens. This request will ensure early, rapid and accurate detection of human and animal disease threats, potential bioterrorism events, changes in antimicrobial resistance of pathogens as well as the timely and effective communication of disease data to decision makers. The program will also ensure capacity to conduct human testing during pandemic situations and produce viral sampling kits when needed. Viruses will continue making the jump from animal (wild or domesticated) populations to humans, making robust surveillance of disease in animal populations critical.

This program will invest in professionals and tools required to provide training programs for diagnostic laboratory specialists needed to augment existing staff and replace expected losses of expertise. A diagnostic laboratory fully-staffed with trained, experienced veterinary diagnosticians that will recognize the first signs of a potentially devastating animal or zoonotic disease threat (coronavirus, influenza, anthrax, etc.) or changes in antimicrobial resistance of pathogens is vital to protecting public health and animal health. The program will also invest in sample handling automation and robotic tools that will allow machines to take over routine and repetitive testing procedures, increasing efficiency and freeing the skilled workforce for higher-level tasks, such as data analysis, novel assay development, and communication of information.

Exceptional Item: Restoration of the 5% Reduction

Requested Amount: \$634,724

A restoration of the 5% reduction is critical to ensure the agency maintains services to its clients. This reduction jeopardizes our ability to meet high volume testing requirements, adequately perform surveillance, and respond to a high consequence disease event. These activities help ensure the health of our agricultural, companion animal, and public health sectors. Funding reductions will directly reduce services to Texans, including slower testing results and reduction in the kinds and amount of testing services available.

At the onset of the pandemic, all four TVMDL laboratory facilities maintained critical diagnostic testing services required by the livestock (beef, dairy, pork, sheep, goat) and poultry industries to maintain production of meat, milk, eggs and associated products. The livestock and poultry sector is a significant portion of the state's economy. Maintaining the food supply is also a significant public health issue.

A restoration of funding allows TVMDL to continue robust biosurveillance for the early detection of important zoonotic diseases.

Agency Approach to 5% Budget Reductions in FY 2020 and FY 2021 and COVID-19 Impacts:

TVMDL has prepared and submitted the requested five percent biennial reduction plan. The plan contained reductions in the following five areas: marketing and client outreach, travel and training expenses, deferral of capital expenses, recission of merit salary programs, and a flexible hiring freeze. These reductions begin to impact the

Administrator's Statement

9/15/2020 10:58:56AM

87th Regular Session, Agency Submission, Version 1
Automated Budget and Evaluation System of Texas (ABEST)

557 Texas A&M Veterinary Medical Diagnostic Laboratory

quality and scope of services provided. Items affecting personnel have the greatest impact, as people account for nearly 70% of the agency budget.

Reductions in personnel target positions that are responsible for the daily delivery of testing services and reporting results to our clients (which include animal owners and veterinarians; state and federal agencies, including the Texas Animal Health Commission; Texas Parks and Wildlife Department; Texas Department of Criminal Justice; the U.S. Department of Agriculture; and the state's food animal industries. When positions are reduced, the agency struggles to maintain turnaround times for testing and consulting services. Delays in the daily delivery of testing services also has a critical direct effect on the agency's ability to maintain a robust surveillance program.

While the reductions in general revenue are difficult, TVMDL has also experienced a decrease in funding from its fee revenues (Funds 763 and 764). These revenues have decreased 12% (\$411,480) since mid-March when the COVID-19 pandemic began its economic disruption. The loss of fee revenue is nearly the amount of the GR reduction over the biennium. The agency has taken additional measures to respond to the reduction in fees by delaying hires of critical positions.

Texas A&M University System Agencies Funding Issues and Needs:

We recognize the difficult financial situation and tough budget decisions that will face the 87th Legislature and will work collaboratively with state leaders to find the support needed for the education, research, and service we provide. A robust higher education sector is key to long term economic growth and resiliency, but increased costs, revenue losses, and budget reductions due to the pandemic have Texas' higher education sector stressed and stretched. With a direct presence in all 254 Texas counties, Texas A&M System Agencies offer research, training, and service to the state's citizens, to improve the social, economic, educational, and health status of Texans. They also play a critical, core role in supporting statewide disaster preparedness and response, from natural disasters such as wildfires and hurricanes to the coronavirus pandemic.

Despite getting no relief from the state's five percent 2020-21 biennial reduction like other agencies that are working on COVID response, our A&M Agencies—in particular the Texas A&M Forest Service, Texas A&M Engineering Extension Service, Texas A&M AgriLife Extension, and Texas A&M Veterinary Medical Diagnostic Laboratory—continue to respond to the pandemic daily. On any given day, we have over 1200 employees, plus the employees of TDEM, serving Texas and Texans through their pandemic response work. We request that all the response efforts at the A&M Agencies be recognized as part of the state's emergency response system and be exempted from any continued or future budget reductions. We request continued investment in higher education and the A&M System Agencies to ensure we maintain our ability to serve the people of Texas. Key agency funding issues are detailed below:

Base Funding – Maintaining equitable, reliable, and predictable funding for higher education is critical, including for the A&M System Agencies. Over the last decade, and particularly in response to Hurricane Harvey, the A&M System Agencies have been tapped to help meet Texas' emergency preparedness and response to hurricanes, tornados, flooding, wildfires, and other events, while continuing to fulfill their research and service missions to improve the lives of Texans. Now our state and country are facing the COVID-19 pandemic, and with the addition of the Texas Division of Emergency Management (TDEM) as the eighth agency in the A&M System, the state's disaster response is dependent on all of these service agencies.

Base funding is provided to institutions of higher education by the State through both formula and non-formula support. Formula funding for the academic institutions supports the core instructional, operational, and infrastructure costs at the institutions. As the A&M System agencies, like other sectors of higher education, adapt to the financial hardships of COVID-19, base funding provides critical support for the programs and services our agencies provide to the state. While our agencies do not have

Administrator's Statement

9/15/2020 10:58:56AM

87th Regular Session, Agency Submission, Version 1
Automated Budget and Evaluation System of Texas (ABEST)

557 Texas A&M Veterinary Medical Diagnostic Laboratory

an operations formula, they need base funding support similar to the support provided by the operational formulas for the academic and health related institutions. This is important not only to provide stable support for agency core missions in a growing state but also, given the critical public safety role of the agencies, in responding to ongoing state emergencies and the coronavirus pandemic.

Restoration of 5% Reductions – Across the A&M System, the reductions total \$84.6 million. These reductions hurt. Our agencies had to cut into the services provided to communities and the state and stressed our resources and employees as we actively responded to hurricanes, wildfires, tornados as well as our significant efforts on behalf of the statewide COVID response. Continuing these reductions into the 2022-23 biennium continue to harm the mission of our agencies and will perpetuate the impacts to Texans.

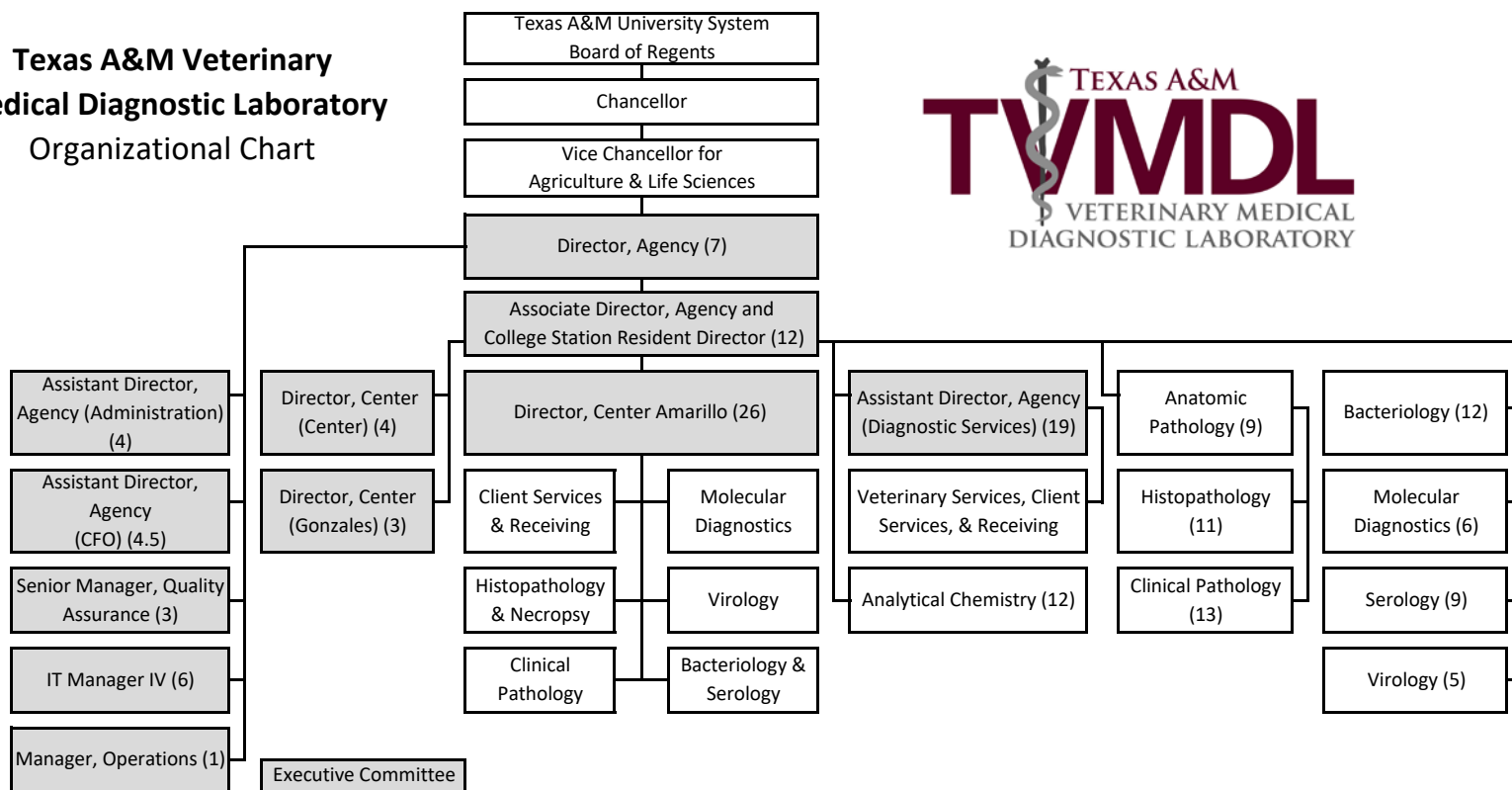
Higher Education Group Health Insurance – We request funding to cover increases in covered enrollments in our insurance program and in health care costs beyond our control. We also request restoration of the gap in funding for our employees compared to state employees in the ERS group plan.

Other Matters:

Background Checks - Texas A&M Veterinary Medical Diagnostic Laboratory will continue to conduct background checks for all external and internal applicants filling new or vacant budgeted, wage, or student positions. This published agency procedure is consistent with the Texas A&M University System regulation governing background checks.

This page intentionally left blank.

Texas A&M Veterinary Medical Diagnostic Laboratory Organizational Chart



Texas A&M Veterinary Medical Diagnostic Laboratory Disciplines

| | |
|-------------------------------------|---|
| Analytical Chemistry | <p>This section handles two primary functions. The first function is in response to the Texas Racing Act. This lab serves as the state's legal testing facility for canine and equine racing animals and functions as a confirmatory testing facility for other racing labs. In addition to support of the livestock show industry, it offers pre-purchase exams.</p> <p>The section also tests many substances, including: animal tissues, ingesta, blood and urine, plants, feed, hay, water, baits and fertilizer, all in an attempt to help producers and animal owners diagnose causes of illness or death in animals. The staff also investigates nutritional imbalances, conducts therapeutic drug monitoring and offers instrumental analysis for feed additives, pesticides, and other substances.</p> |
| Anatomic Pathology & Histopathology | <p>Veterinary pathologists perform evaluation on samples collected or submitted from live or dead animals to diagnose disease or cause of death. Pathologists have at their disposal a variety of tissue stains to identify the presence of microorganisms, pigments, or tissue deposits. Veterinary practitioners or oncologists can use this information to determine appropriate therapies.</p> |
| Bacteriology | <p>This laboratory processes samples from companion animals, livestock, and exotic animals that may be infected with or harboring potentially infectious bacteria. Experienced technicians employ various media to isolate bacterial/fungal organisms to identify clinically significant organisms or potential pathogens. This section provides information used in treatment options for herd health management decisions such as antibiotic selection.</p> |
| Clinical Pathology | <p>This section receives blood, body fluids and secretions along with tissue aspirates from a variety of domestic animals, zoo animals, wildlife species, and birds. Tests help determine illness or abnormalities. Clinical pathologists are available for consultation on these laboratory-generated results. The section also uses state-of-the-art technology to determine the levels of hormones to aid in the confirmation of diseases, the detection of pregnancy and stages of the estrous cycle. In addition, semen analysis can aid in the evaluation of the fertility status of male breeding animals.</p> |
| Molecular Diagnostics | <p>This lab provides fast and reliable genetic tests to help veterinarians diagnose and monitor animal diseases and detect genetic defects. The lab employs the latest molecular, genetic, and computer technologies for routine diagnosis, disease-outbreak investigation, and bioterrorism readiness.</p> |
| Necropsy | <p>TVMDL pathologists perform more than 1,300 necropsies annually on a variety of species. The pathology staff has expertise in handling large animals, exotics, small ruminants, and surgical biopsies.</p> |
| Quality Assurance & Safety | <p>The Quality Assurance Programs ensure the standardization of agency best practices. This allows TVMDL to ensure the maximum extent possible, the correctness of the tests and diagnostic interpretations it generates. Safety programs ensure the safety of our workforce is the first and foremost priority. This section ensures that safety programs are robust and that facilities meet both biosafety and biosecurity standards.</p> |
| Serology | <p>The serology section performs diagnostic testing and provides information on serological diagnosis for infectious diseases. In addition to serologic diagnosis of infectious diseases, the section provides immune profiling for herd health status and conducts tests required for interstate or international shipment of food animals and companion animals and their genetic products.</p> |
| Veterinary & Client Services | <p>This section is the first line of communication with our clients. They are responsible for entering case data into an electronic reporting system, fielding client calls, providing result interpretation and test recommendations, distributing reports and answering questions about TVMDL services. The section is also responsible for opening each shipment, ensuring samples submitted contain the appropriate paperwork, and assigning each case to the correct testing laboratory. Specimens are submitted from Texas, the US and international clients for routine testing, import/export and surveillance.</p> |
| Virology | <p>Virology offers state-of-the-art diagnostic testing for major viruses of cattle, horses, dogs, and cats, and selected testing for viruses of pigs, sheep, wildlife, and exotics. The lab is responsible for analysis of specimens for evidence of viral infection in clinically ill animals or those suspected of acting as subclinical carriers of viruses that can cause disease in other animals.</p> |

This page intentionally left blank.



CERTIFICATE

Agency Name Texas A&M Veterinary Medical Diagnostic Laboratory

This is to certify that the information contained in the agency Legislative Appropriations Request filed with the Legislative Budget Board (LBB) and the Governor's Office Budget Division (Governor's Office) is accurate to the best of my knowledge and that the electronic submission to the LBB via the Automated Budget and Evaluation System of Texas (ABEST) and the PDF file submitted via the LBB Document Submission application are identical.

Additionally, should it become likely at any time that unexpended balances will accrue for any account, the LBB and the Governor's Office will be notified in writing in accordance with Article IX, Section 7.01 (2020-21 GAA).

Chief Executive Officer or Presiding Judge

Bruce L. Akey MS DVM Digitally signed by Bruce L. Akey MS DVM
Date: 2020.08.05 14:50:53 -05'00'

Signature

Dr. Bruce Akey

Printed Name

Director

Title

August 5, 2020

Date

Board or Commission Chair

Elaine Mendoza
Signature

Elaine Mendoza

Printed Name

Chairman - Board of Regents

Title

9/11/2020

Date

Chief Financial Officer

Digitally signed by Vic Seidel
Date: 2020.08.05 15:16:32 -05'00'

Signature

Vic S. Seidel

Printed Name

Assistant Agency Director, Chief Financial Officer

Title

August 5, 2020

Date

This page intentionally left blank.

Budget Overview - Biennial Amounts
87th Regular Session, Agency Submission, Version 1
Automated Budget and Evaluation System of Texas (ABEST)

| 557 Texas A&M Veterinary Medical Diagnostic Laboratory | | | | | | | | | | | |
|--|-----------------------|-------------------|--------------|---------|----------------|----------------|-------------------|-------------------|-------------------|-------------------|------------------------------|
| Appropriation Years: 2022-23 | | | | | | | | | | | |
| | GENERAL REVENUE FUNDS | | GR DEDICATED | | FEDERAL FUNDS | | OTHER FUNDS | | ALL FUNDS | | EXCEPTIONAL ITEM FUNDS |
| | 2020-21 | 2022-23 | 2020-21 | 2022-23 | 2020-21 | 2022-23 | 2020-21 | 2022-23 | 2020-21 | 2022-23 | 2022-23 |
| Goal: 1. Provide Diagnostic Services | | | | | | | | | | | |
| Drug/Export Tests, & Disease | | | | | | | | | | | |
| Surveillance | | | | | | | | | | | |
| 1.1.1. Diagnostic Services | 10,090,841 | 10,175,250 | | | 545,454 | 545,454 | 20,334,899 | 20,349,830 | 30,971,194 | 31,070,534 | 3,984,724 |
| 1.2.1. Drug Testing Service | | | | | | | 1,504,054 | 1,477,520 | 1,504,054 | 1,477,520 | |
| Total, Goal | 10,090,841 | 10,175,250 | | | 545,454 | 545,454 | 21,838,953 | 21,827,350 | 32,475,248 | 32,548,054 | 3,984,724 |
| Goal: 3. Indirect Administration | | | | | | | | | | | |
| 3.1.1. Indirect Administration | 686,037 | 608,102 | | | | | 1,933,171 | 2,012,856 | 2,619,208 | 2,620,958 | |
| 3.1.2. Infrastructure Support In Brazos Co | 1,100,694 | | | | | | 1,311,832 | | 2,412,526 | | |
| 3.1.3. Infrastruct Supp Outside Brazos Co | 168,439 | | | | | | 132,183 | | 300,622 | | |
| 3.2.1. Debt Service - College Station | 5,853,300 | 5,859,300 | | | | | | | 5,853,300 | 5,859,300 | |
| Total, Goal | 7,808,470 | 6,467,402 | | | | | 3,377,186 | 2,012,856 | 11,185,656 | 8,480,258 | |
| Total, Agency | 17,899,311 | 16,642,652 | | | 545,454 | 545,454 | 25,216,139 | 23,840,206 | 43,660,904 | 41,028,312 | 3,984,724 |
| Total FTEs | | | | | | | | | 161.0 | 161.0 | 13.0 |

2.A. Summary of Base Request by Strategy

9/15/2020 10:58:57AM

87th Regular Session, Agency Submission, Version 1

Automated Budget and Evaluation System of Texas (ABEST)

557 Texas A&M Veterinary Medical Diagnostic Laboratory

| Goal / Objective / STRATEGY | Exp 2019 | Est 2020 | Bud 2021 | Req 2022 | Req 2023 |
|---|---------------------|---------------------|---------------------|---------------------|---------------------|
| 1 Provide Diagnostic Services Drug/Export Tests, & Disease Surveillance | | | | | |
| 1 Maintain Diagnostic Services for Effective Disease Mgmt & Surveillance | | | | | |
| 1 DIAGNOSTIC SERVICES | 13,986,494 | 15,435,927 | 15,535,267 | 15,535,267 | 15,535,267 |
| 2 Provide An Effective Drug Testing Laboratory | | | | | |
| 1 DRUG TESTING SERVICE | 957,631 | 765,294 | 738,760 | 738,760 | 738,760 |
| TOTAL, GOAL 1 | \$14,944,125 | \$16,201,221 | \$16,274,027 | \$16,274,027 | \$16,274,027 |
| 3 Indirect Administration | | | | | |
| 1 Indirect Administration | | | | | |
| 1 INDIRECT ADMINISTRATION | 1,865,465 | 1,308,729 | 1,310,479 | 1,310,479 | 1,310,479 |
| 2 INFRASTRUCTURE SUPPORT IN BRAZOS CO (1) | 1,123,861 | 1,181,263 | 1,231,263 | 0 | 0 |
| 3 INFRASTRUCT SUPP OUTSIDE BRAZOS CO | 193,469 | 142,811 | 157,811 | 0 | 0 |
| 2 Debt Service | | | | | |
| 1 DEBT SERVICE - COLLEGE STATION | 2,923,650 | 2,927,650 | 2,925,650 | 2,927,150 | 2,932,150 |

(1) - Formula funded strategies are not requested in 2022-23 because amounts are not determined by institutions.

2.A. Summary of Base Request by Strategy

9/15/2020 10:58:57AM

87th Regular Session, Agency Submission, Version 1

Automated Budget and Evaluation System of Texas (ABEST)

557 Texas A&M Veterinary Medical Diagnostic Laboratory

| Goal / Objective / STRATEGY | Exp 2019 | Est 2020 | Bud 2021 | Req 2022 | Req 2023 |
|---|--------------|--------------|--------------|--------------|--------------|
| TOTAL, GOAL 3 | \$6,106,445 | \$5,560,453 | \$5,625,203 | \$4,237,629 | \$4,242,629 |
| TOTAL, AGENCY STRATEGY REQUEST | \$21,050,570 | \$21,761,674 | \$21,899,230 | \$20,511,656 | \$20,516,656 |
| TOTAL, AGENCY RIDER APPROPRIATIONS REQUEST* | | | | \$0 | \$0 |
| GRAND TOTAL, AGENCY REQUEST | \$21,050,570 | \$21,761,674 | \$21,899,230 | \$20,511,656 | \$20,516,656 |
| <u>METHOD OF FINANCING:</u> | | | | | |
| General Revenue Funds: | | | | | |
| 1 General Revenue Fund | 8,688,386 | 9,139,623 | 8,759,688 | 8,321,326 | 8,321,326 |
| SUBTOTAL | \$8,688,386 | \$9,139,623 | \$8,759,688 | \$8,321,326 | \$8,321,326 |
| Federal Funds: | | | | | |
| 555 Federal Funds | 296,922 | 272,727 | 272,727 | 272,727 | 272,727 |
| SUBTOTAL | \$296,922 | \$272,727 | \$272,727 | \$272,727 | \$272,727 |
| Other Funds: | | | | | |
| 763 Drug Testing Lab Fee Rev, estimated | 984,378 | 770,332 | 738,760 | 738,760 | 738,760 |
| 764 Vet Med Lab Fee Revenue, estimated | 11,080,884 | 11,578,992 | 12,128,055 | 11,178,843 | 11,183,843 |
| SUBTOTAL | \$12,065,262 | \$12,349,324 | \$12,866,815 | \$11,917,603 | \$11,922,603 |
| TOTAL, METHOD OF FINANCING | \$21,050,570 | \$21,761,674 | \$21,899,230 | \$20,511,656 | \$20,516,656 |

2.A. Summary of Base Request by Strategy

9/15/2020 10:58:57AM

87th Regular Session, Agency Submission, Version 1

Automated Budget and Evaluation System of Texas (ABEST)

557 Texas A&M Veterinary Medical Diagnostic Laboratory

| Goal / Objective / STRATEGY | Exp 2019 | Est 2020 | Bud 2021 | Req 2022 | Req 2023 |
|------------------------------------|-----------------|-----------------|-----------------|-----------------|-----------------|
|------------------------------------|-----------------|-----------------|-----------------|-----------------|-----------------|

*Rider appropriations for the historical years are included in the strategy amounts.

This page intentionally left blank.

2.B. Summary of Base Request by Method of Finance

9/15/2020 10:58:57AM

87th Regular Session, Agency Submission, Version 1

Automated Budget and Evaluation System of Texas (ABEST)

| Agency code: | 557 | Agency name: | Texas A&M Veterinary Medical Diagnostic Laboratory | | | |
|-------------------------------|--|--------------|---|-------------|-------------|-------------|
| METHOD OF FINANCING | | Exp 2019 | Est 2020 | Bud 2021 | Req 2022 | Req 2023 |
| <u>GENERAL REVENUE</u> | | | | | | |
| <u>1</u> | General Revenue Fund | | | | | |
| | <i>REGULAR APPROPRIATIONS</i> | | | | | |
| | Regular Appropriations from MOF Table (2018-19 GAA) | \$8,693,186 | \$0 | \$0 | \$0 | \$0 |
| | Regular Appropriations from MOF Table (2020-21 GAA) | \$0 | \$9,273,893 | \$9,273,891 | \$8,321,326 | \$8,321,326 |
| | <i>TRANSFERS</i> | | | | | |
| | Art. IX Sect 14.01(e) - Transfer infrastructure allocation to Texas A&M Forest Service | \$0 | \$(6,875) | \$(6,874) | \$0 | \$0 |
| | Comments: Technical correction to infrastructure formula calculation from 86th session. | | | | | |
| | <i>LAPSED APPROPRIATIONS</i> | | | | | |
| | Regular Appropriations from MOF Table (2018-19 GAA) | \$(4,800) | \$0 | \$0 | \$0 | \$0 |
| | Comments: Lapsed appropriatin for reduction in debt service. | | | | | |
| | <i>BASE ADJUSTMENT</i> | | | | | |
| | Funds lapsed to implement 5% budget reduction plan pursuant to May 20, 2020 memo. | | | | | |

2.B. Summary of Base Request by Method of Finance

9/15/2020 10:58:57AM

87th Regular Session, Agency Submission, Version 1

Automated Budget and Evaluation System of Texas (ABEST)

| | | | | | | |
|-------------------------------|---|--|--------------------|--------------------|--------------------|--------------------|
| Agency code: 557 | | Agency name: Texas A&M Veterinary Medical Diagnostic Laboratory | | | | |
| METHOD OF FINANCING | | Exp 2019 | Est 2020 | Bud 2021 | Req 2022 | Req 2023 |
| <u>GENERAL REVENUE</u> | | | | | | |
| | | \$0 | \$(127,395) | \$(507,329) | \$0 | \$0 |
| TOTAL, | General Revenue Fund | | | | | |
| | | \$8,688,386 | \$9,139,623 | \$8,759,688 | \$8,321,326 | \$8,321,326 |
| TOTAL, ALL | GENERAL REVENUE | | | | | |
| | | \$8,688,386 | \$9,139,623 | \$8,759,688 | \$8,321,326 | \$8,321,326 |
| <u>FEDERAL FUNDS</u> | | | | | | |
| <u>555</u> | Federal Funds | | | | | |
| | <i>REGULAR APPROPRIATIONS</i> | | | | | |
| | Regular Appropriations from MOF Table (2018-19 GAA) | | | | | |
| | | \$326,000 | \$0 | \$0 | \$0 | \$0 |
| | Regular Appropriations from MOF Table (2020-21 GAA) | | | | | |
| | | \$0 | \$346,722 | \$346,722 | \$272,727 | \$272,727 |
| | <i>RIDER APPROPRIATION</i> | | | | | |
| | Art IX, Sec 13.01, Federal Funds/Block Grants (2018-19 GAA) | | | | | |
| | | \$(29,078) | \$0 | \$0 | \$0 | \$0 |
| | Art IX, Sec 13.01, Federal Funds/Block Grants (2020-21 GAA) | | | | | |

2.B. Summary of Base Request by Method of Finance

9/15/2020 10:58:57AM

87th Regular Session, Agency Submission, Version 1

Automated Budget and Evaluation System of Texas (ABEST)

| | | | | | | |
|-------------------------------|---|--|------------------|------------------|------------------|------------------|
| Agency code: 557 | | Agency name: Texas A&M Veterinary Medical Diagnostic Laboratory | | | | |
| METHOD OF FINANCING | | Exp 2019 | Est 2020 | Bud 2021 | Req 2022 | Req 2023 |
| <u>FEDERAL FUNDS</u> | | | | | | |
| | | \$0 | \$(73,995) | \$(73,995) | \$0 | \$0 |
| TOTAL, | Federal Funds | | | | | |
| | | \$296,922 | \$272,727 | \$272,727 | \$272,727 | \$272,727 |
| TOTAL, ALL | FEDERAL FUNDS | | | | | |
| | | \$296,922 | \$272,727 | \$272,727 | \$272,727 | \$272,727 |
| <u>OTHER FUNDS</u> | | | | | | |
| <u>763</u> | Drug Testing Laboratory Fee Revenue | | | | | |
| <i>REGULAR APPROPRIATIONS</i> | | | | | | |
| | Regular Appropriations from MOF Table (2018-19 GAA) | | | | | |
| | | \$961,878 | \$0 | \$0 | \$0 | \$0 |
| | Regular Appropriations from MOF Table (2020-21 GAA) | | | | | |
| | | \$0 | \$951,417 | \$951,417 | \$738,760 | \$738,760 |
| <i>BASE ADJUSTMENT</i> | | | | | | |
| | Revised receipts | | | | | |
| | | \$27,129 | \$(207,873) | \$0 | \$0 | \$0 |
| | Adjust to Expended for Locally Held Funds | | | | | |

2.B. Summary of Base Request by Method of Finance

9/15/2020 10:58:57AM

87th Regular Session, Agency Submission, Version 1

Automated Budget and Evaluation System of Texas (ABEST)

| Agency code: 557 | | Agency name: Texas A&M Veterinary Medical Diagnostic Laboratory | | | | |
|---------------------------|---|--|---------------------|---------------------|---------------------|---------------------|
| METHOD OF FINANCING | | Exp 2019 | Est 2020 | Bud 2021 | Req 2022 | Req 2023 |
| <u>OTHER FUNDS</u> | | | | | | |
| | | \$(4,629) | \$26,788 | \$(212,657) | \$0 | \$0 |
| TOTAL, | Drug Testing Laboratory Fee Revenue | | | | | |
| | | \$984,378 | \$770,332 | \$738,760 | \$738,760 | \$738,760 |
| <u>764</u> | Veterinary Medical Diagnostic Laboratory Fee Revenue | | | | | |
| | <i>REGULAR APPROPRIATIONS</i> | | | | | |
| | Regular Appropriations from MOF Table (2018-19 GAA) | | | | | |
| | | \$9,053,675 | \$0 | \$0 | \$0 | \$0 |
| | Regular Appropriations from MOF Table (2020-21 GAA) | | | | | |
| | | \$0 | \$10,303,212 | \$10,301,212 | \$11,178,843 | \$11,183,843 |
| | <i>BASE ADJUSTMENT</i> | | | | | |
| | Revised Receipts | | | | | |
| | | \$2,955,497 | \$1,578,333 | \$1,747,371 | \$0 | \$0 |
| | Adjust to Expended for Locally Held Funds | | | | | |
| | | \$(928,288) | \$(302,553) | \$79,472 | \$0 | \$0 |
| TOTAL, | Veterinary Medical Diagnostic Laboratory Fee Revenue | | | | | |
| | | \$11,080,884 | \$11,578,992 | \$12,128,055 | \$11,178,843 | \$11,183,843 |

2.B. Summary of Base Request by Method of Finance

9/15/2020 10:58:57AM

87th Regular Session, Agency Submission, Version 1

Automated Budget and Evaluation System of Texas (ABEST)

| Agency code: 557 | | Agency name: Texas A&M Veterinary Medical Diagnostic Laboratory | | | | |
|---|--|---|--------------|--------------|--------------|--------------|
| METHOD OF FINANCING | | Exp 2019 | Est 2020 | Bud 2021 | Req 2022 | Req 2023 |
| TOTAL, ALL OTHER FUNDS | | | | | | |
| | | \$12,065,262 | \$12,349,324 | \$12,866,815 | \$11,917,603 | \$11,922,603 |
| GRAND TOTAL | | \$21,050,570 | \$21,761,674 | \$21,899,230 | \$20,511,656 | \$20,516,656 |
| | | | | | | |
| FULL-TIME-EQUIVALENT POSITIONS | | | | | | |
| REGULAR APPROPRIATIONS | | | | | | |
| Regular Appropriations from MOF Table (2018-19 GAA) | | 161.0 | 0.0 | 0.0 | 0.0 | 0.0 |
| Regular Appropriations from MOF Table (2020-21 GAA) | | 0.0 | 161.0 | 161.0 | 0.0 | 0.0 |
| Regular Appropriation (2022-23) | | 0.0 | 0.0 | 0.0 | 161.0 | 161.0 |
| UNAUTHORIZED NUMBER OVER (BELOW) CAP | | | | | | |
| Unauthorized Number Over (Below) Cap | | (2.3) | 0.0 | 0.0 | 0.0 | 0.0 |
| TOTAL, ADJUSTED FTES | | 158.7 | 161.0 | 161.0 | 161.0 | 161.0 |
| | | | | | | |
| NUMBER OF 100% FEDERALLY FUNDED FTES | | 0.0 | 0.0 | 0.0 | 0.0 | 0.0 |

2.C. Summary of Base Request by Object of Expense

9/15/2020 10:58:58AM

87th Regular Session, Agency Submission, Version 1
Automated Budget and Evaluation System of Texas (ABEST)**557 Texas A&M Veterinary Medical Diagnostic Laboratory**

| OBJECT OF EXPENSE | Exp 2019 | Est 2020 | Bud 2021 | BL 2022 | BL 2023 |
|-------------------------------------|---------------------|---------------------|---------------------|---------------------|---------------------|
| 1001 SALARIES AND WAGES | \$9,128,983 | \$9,546,904 | \$9,556,904 | \$9,338,162 | \$9,338,162 |
| 1002 OTHER PERSONNEL COSTS | \$2,292,233 | \$2,381,018 | \$2,471,796 | \$2,432,305 | \$2,432,305 |
| 2001 PROFESSIONAL FEES AND SERVICES | \$45,428 | \$46,480 | \$61,480 | \$61,480 | \$61,480 |
| 2002 FUELS AND LUBRICANTS | \$1,407 | \$1,332 | \$1,332 | \$1,332 | \$1,332 |
| 2003 CONSUMABLE SUPPLIES | \$2,772,311 | \$2,921,487 | \$3,057,199 | \$3,057,199 | \$3,057,199 |
| 2004 UTILITIES | \$491,126 | \$483,988 | \$528,988 | \$102,230 | \$102,230 |
| 2005 TRAVEL | \$87,188 | \$87,166 | \$7,805 | \$7,805 | \$7,805 |
| 2006 RENT - BUILDING | \$18,870 | \$16,300 | \$16,300 | \$16,300 | \$16,300 |
| 2007 RENT - MACHINE AND OTHER | \$50,517 | \$41,830 | \$41,830 | \$41,830 | \$41,830 |
| 2008 DEBT SERVICE | \$2,923,650 | \$2,927,650 | \$2,925,650 | \$2,927,150 | \$2,932,150 |
| 2009 OTHER OPERATING EXPENSE | \$2,676,395 | \$3,009,031 | \$2,940,550 | \$2,236,467 | \$2,236,467 |
| 5000 CAPITAL EXPENDITURES | \$562,462 | \$298,488 | \$289,396 | \$289,396 | \$289,396 |
| OOE Total (Excluding Riders) | \$21,050,570 | \$21,761,674 | \$21,899,230 | \$20,511,656 | \$20,516,656 |
| OOE Total (Riders) | | | | | |
| Grand Total | \$21,050,570 | \$21,761,674 | \$21,899,230 | \$20,511,656 | \$20,516,656 |

2.D. Summary of Base Request Objective Outcomes

9/15/2020 10:58:58AM

87th Regular Session, Agency Submission, Version 1
Automated Budget and Evaluation system of Texas (ABEST)

557 Texas A&M Veterinary Medical Diagnostic Laboratory

| Goal/ Objective / Outcome | | Exp 2019 | Est 2020 | Bud 2021 | BL 2022 | BL 2023 |
|---------------------------|--|------------|------------|------------|--------------|--------------|
| 1 | Provide Diagnostic Services Drug/Export Tests, & Disease Surveillance | | | | | |
| | 1 Maintain Diagnostic Services for Effective Disease Mgmt & Surveillance | | | | | |
| KEY | 1 Number of Diagnostic Services Rendered | | | | | |
| | | 937,188.00 | 984,335.00 | 994,178.00 | 1,004,120.00 | 1,014,161.00 |
| | 2 Provide An Effective Drug Testing Laboratory | | | | | |
| KEY | 1 Percent of Animals Testing Drug Free | | | | | |
| | | 96.90% | 99.00% | 99.00% | 99.00% | 99.00% |

2.E. Summary of Exceptional Items Request
87th Regular Session, Agency Submission, Version 1
Automated Budget and Evaluation System of Texas (ABEST)

DATE: 9/15/2020
TIME : 10:58:58AM

Agency code: 557

Agency name: Texas A&M Veterinary Medical Diagnostic Laboratory

| Priority | Item | 2022 | | | 2023 | | | Biennium | |
|---|---------------------------------|---------------------------|--------------------|-------------|------------------------|--------------------|-------------|------------------------|--------------------|
| | | GR and GR/GR Dedicated | All Funds | FTEs | GR and GR Dedicated | All Funds | FTEs | GR and GR Dedicated | All Funds |
| 1 | Disease Threats | \$2,121,300 | \$2,121,300 | 11.0 | \$1,228,700 | \$1,228,700 | 11.0 | \$3,350,000 | \$3,350,000 |
| 2 | Restoration of the 5% Reduction | \$317,362 | \$317,362 | 2.0 | \$317,362 | \$317,362 | 2.0 | \$634,724 | \$634,724 |
| Total, Exceptional Items Request | | \$2,438,662 | \$2,438,662 | 13.0 | \$1,546,062 | \$1,546,062 | 13.0 | \$3,984,724 | \$3,984,724 |
| Method of Financing | | | | | | | | | |
| | General Revenue | \$2,438,662 | \$2,438,662 | | \$1,546,062 | \$1,546,062 | | \$3,984,724 | \$3,984,724 |
| | General Revenue - Dedicated | | | | | | | | |
| | Federal Funds | | | | | | | | |
| | Other Funds | | | | | | | | |
| | | \$2,438,662 | \$2,438,662 | | \$1,546,062 | \$1,546,062 | | \$3,984,724 | \$3,984,724 |
| Full Time Equivalent Positions | | | | 13.0 | | | | 13.0 | |
| Number of 100% Federally Funded FTEs | | | | 0.0 | | | | 0.0 | |

2.F. Summary of Total Request by Strategy
87th Regular Session, Agency Submission, Version 1
Automated Budget and Evaluation System of Texas (ABEST)

DATE : 9/15/2020
TIME : 10:58:59AM

| Agency code: 557 | Agency name: Texas A&M Veterinary Medical Diagnostic Laboratory | | | | | |
|--|---|---------------------|--------------------|--------------------|---------------------|---------------------|
| Goal/Objective/STRATEGY | Base | Base | Exceptional | Exceptional | Total Request | Total Request |
| 1 Provide Diagnostic Services Drug/Export Tests, & Disease Surveillanc | | | | | | |
| 1 <i>Maintain Diagnostic Services for Effective Disease Mgmt & Surveilla</i> | | | | | | |
| 1 DIAGNOSTIC SERVICES | \$15,535,267 | \$15,535,267 | \$2,438,662 | \$1,546,062 | \$17,973,929 | \$17,081,329 |
| 2 <i>Provide An Effective Drug Testing Laboratory</i> | | | | | | |
| 1 DRUG TESTING SERVICE | 738,760 | 738,760 | 0 | 0 | 738,760 | 738,760 |
| TOTAL, GOAL 1 | \$16,274,027 | \$16,274,027 | \$2,438,662 | \$1,546,062 | \$18,712,689 | \$17,820,089 |
| 3 Indirect Administration | | | | | | |
| 1 <i>Indirect Administration</i> | | | | | | |
| 1 INDIRECT ADMINISTRATION | 1,310,479 | 1,310,479 | 0 | 0 | 1,310,479 | 1,310,479 |
| 2 INFRASTRUCTURE SUPPORT IN BRAZOS CO | 0 | 0 | 0 | 0 | 0 | 0 |
| 3 INFRASTRUCT SUPP OUTSIDE BRAZOS CO | 0 | 0 | 0 | 0 | 0 | 0 |
| 2 <i>Debt Service</i> | | | | | | |
| 1 DEBT SERVICE - COLLEGE STATION | 2,927,150 | 2,932,150 | 0 | 0 | 2,927,150 | 2,932,150 |
| TOTAL, GOAL 3 | \$4,237,629 | \$4,242,629 | \$0 | \$0 | \$4,237,629 | \$4,242,629 |
| TOTAL, AGENCY STRATEGY REQUEST | \$20,511,656 | \$20,516,656 | \$2,438,662 | \$1,546,062 | \$22,950,318 | \$22,062,718 |
| TOTAL, AGENCY RIDER APPROPRIATIONS REQUEST | | | | | | |
| GRAND TOTAL, AGENCY REQUEST | \$20,511,656 | \$20,516,656 | \$2,438,662 | \$1,546,062 | \$22,950,318 | \$22,062,718 |

2.F. Summary of Total Request by Strategy
87th Regular Session, Agency Submission, Version 1
Automated Budget and Evaluation System of Texas (ABEST)

DATE : 9/15/2020
TIME : 10:58:59AM

| Agency code: 557 | | Agency name: Texas A&M Veterinary Medical Diagnostic Laboratory | | | | | |
|---------------------------------------|-------------------------------------|---|---------------------|--------------------|--------------------|---------------------|---------------------|
| Goal/Objective/STRATEGY | | Base | Base | Exceptional | Exceptional | Total Request | Total Request |
| General Revenue Funds: | | | | | | | |
| 1 | General Revenue Fund | \$8,321,326 | \$8,321,326 | \$2,438,662 | \$1,546,062 | \$10,759,988 | \$9,867,388 |
| | | \$8,321,326 | \$8,321,326 | \$2,438,662 | \$1,546,062 | \$10,759,988 | \$9,867,388 |
| Federal Funds: | | | | | | | |
| 555 | Federal Funds | 272,727 | 272,727 | 0 | 0 | 272,727 | 272,727 |
| | | \$272,727 | \$272,727 | \$0 | \$0 | \$272,727 | \$272,727 |
| Other Funds: | | | | | | | |
| 763 | Drug Testing Lab Fee Rev, estimated | 738,760 | 738,760 | 0 | 0 | 738,760 | 738,760 |
| 764 | Vet Med Lab Fee Revenue, estimated | 11,178,843 | 11,183,843 | 0 | 0 | 11,178,843 | 11,183,843 |
| | | \$11,917,603 | \$11,922,603 | \$0 | \$0 | \$11,917,603 | \$11,922,603 |
| TOTAL, METHOD OF FINANCING | | \$20,511,656 | \$20,516,656 | \$2,438,662 | \$1,546,062 | \$22,950,318 | \$22,062,718 |
| FULL TIME EQUIVALENT POSITIONS | | | | | | | |
| | | 161.0 | 161.0 | 13.0 | 13.0 | 174.0 | 174.0 |

2.G. Summary of Total Request Objective Outcomes
 87th Regular Session, Agency Submission, Version 1
 Automated Budget and Evaluation system of Texas (ABEST)

Date : 9/15/2020

Time: 10:59:00AM

Agency code: 557

Agency name: Texas A&M Veterinary Medical Diagnostic Laboratory

Goal/ Objective / Outcome

| | | BL | BL | Excp | Excp | Total | Total |
|------------|--|--------------|--------------|-------------|-------------|----------------|----------------|
| | | 2022 | 2023 | 2022 | 2023 | Request | Request |
| | | | | | | 2022 | 2023 |
| 1 | Provide Diagnostic Services Drug/Export Tests, & Disease Surveillance | | | | | | |
| 1 | Maintain Diagnostic Services for Effective Disease Mgmt & Surveillance | | | | | | |
| KEY | 1 Number of Diagnostic Services Rendered | | | | | | |
| | | 1,004,120.00 | 1,014,161.00 | | | 1,004,120.00 | 1,014,161.00 |
| 2 | Provide An Effective Drug Testing Laboratory | | | | | | |
| KEY | 1 Percent of Animals Testing Drug Free | | | | | | |
| | | 99.00% | 99.00% | | | 99.00% | 99.00% |

This page intentionally left blank.

General Revenue (GR) & General Revenue Dedicated (GR-D) Baseline

DATE: 9/15/2020

87th Regular Session, Agency Submission, Version 1
Automated Budget and Evaluation System of Texas (ABEST)

TIME: 10:59:03AM

Agency code:

Agency name: **Texas A&M Veterinary Medical Diagnostic Laboratory****GR Baseline Request Limit = \$16,642,652****GR-D Baseline Request Limit = \$0****Strategy/Strategy Option/Rider****2022 Funds****2023 Funds****Biennial****Biennial****Cumulative GR****Cumulative Ded****Page #****FTEs****Total****GR****Ded****FTEs****Total****GR****Ded**Strategy: 1 - 1 - 1 **Provide Diagnostic Service and Disease Surveillance**

140.6 15,535,267 5,090,125 0 140.6 15,535,267 5,085,125 0 10,175,250 0 _____

Strategy: 1 - 2 - 1 **Provide Drug Testing Service**

5.2 738,760 0 0 5.2 738,760 0 0 10,175,250 0 _____

Strategy: 3 - 1 - 1 **Indirect Administration**

12.2 1,310,479 304,051 0 12.2 1,310,479 304,051 0 10,783,352 0 _____

Strategy: 3 - 1 - 2 **Infrastructure Support - In Brazos County**

1.9 0 0 0 1.9 0 0 0 10,783,352 0 _____

Strategy: 3 - 1 - 3 **Infrastructure Support - Outside Brazos County**

1.1 0 0 0 1.1 0 0 0 10,783,352 0 _____

Strategy: 3 - 2 - 1 **Debt Service - College Station**

0.0 2,927,150 2,927,150 0 0.0 2,932,150 2,932,150 0 16,642,652 0 _____

161.0**161.0*********GR Baseline Request Limit=\$16,642,652*******Excp Item: 1 **Rapid Detection of Human and Animal Disease Threats**

11.0 2,121,300 2,121,300 0 11.0 1,228,700 1,228,700 0 19,992,652 0 _____

Strategy Detail for Excp Item: 1Strategy: 1 - 1 - 1 **Provide Diagnostic Service and Disease Surveillance**

11.0 2,121,300 2,121,300 0 11.0 1,228,700 1,228,700 0

Excp Item: 2 **Restoration of the 5% Reduction**

2.0 317,362 317,362 0 2.0 317,362 317,362 0 20,627,376 0 _____

Strategy Detail for Excp Item: 2Strategy: 1 - 1 - 1 **Provide Diagnostic Service and Disease Surveillance**

2.0 317,362 317,362 0 2.0 317,362 317,362 0

General Revenue (GR) & General Revenue Dedicated (GR-D) Baseline

DATE: 9/15/2020

87th Regular Session, Agency Submission, Version 1
 Automated Budget and Evaluation System of Texas (ABEST)

TIME: 10:59:03AM

Agency code:

Agency name: **Texas A&M Veterinary Medical Diagnostic Laboratory****GR Baseline Request Limit = \$16,642,652****GR-D Baseline Request Limit = \$0****Strategy/Strategy Option/Rider****2022 Funds****2023 Funds****Biennial****Biennial****Cumulative GR****Cumulative Ded****Page #****174.0****\$22,950,318****\$10,759,988****\$0****174.0****\$22,062,718****\$9,867,388****0**

3.A. Strategy Request
87th Regular Session, Agency Submission, Version 1
Automated Budget and Evaluation System of Texas (ABEST)

9/15/2020 10:59:05AM

557 Texas A&M Veterinary Medical Diagnostic Laboratory

GOAL: 1 Provide Diagnostic Services Drug/Export Tests, & Disease Surveillance
OBJECTIVE: 1 Maintain Diagnostic Services for Effective Disease Mgmt & Surveillance
STRATEGY: 1 Provide Diagnostic Service and Disease Surveillance

Service Categories:

Service: 37

Income: A.2

Age: B.3

| CODE | DESCRIPTION | Exp 2019 | Est 2020 | Bud 2021 | BL 2022 | BL 2023 |
|-----------------------------|---|-------------|-------------|-------------|-------------|-------------|
| Output Measures: | | | | | | |
| KEY 1 | Number of Cases Submitted and Examined | 149,318.00 | 148,780.00 | 150,268.00 | 151,770.00 | 153,288.00 |
| KEY 2 | # of Surveillance Tests Performed for Agents of Bio- or Eco-terrorism | 333,354.00 | 429,708.00 | 434,005.00 | 438,345.00 | 442,729.00 |
| 3 | Number of Reportable Findings | 2,143.00 | 2,239.00 | 2,200.00 | 2,200.00 | 2,200.00 |
| Efficiency Measures: | | | | | | |
| 1 | Response Time for Diagnostic Service and Disease Surveillance | 3.50 | 3.50 | 3.50 | 3.50 | 3.50 |
| 2 | Number of Cases Handled Per FTE | 1,195.00 | 1,190.00 | 1,202.00 | 1,214.00 | 1,226.00 |
| Objects of Expense: | | | | | | |
| 1001 | SALARIES AND WAGES | \$7,043,033 | \$7,916,576 | \$7,926,576 | \$7,926,576 | \$7,926,576 |
| 1002 | OTHER PERSONNEL COSTS | \$1,850,703 | \$2,092,424 | \$2,180,202 | \$2,180,202 | \$2,180,202 |
| 2001 | PROFESSIONAL FEES AND SERVICES | \$17,124 | \$46,480 | \$61,480 | \$61,480 | \$61,480 |
| 2002 | FUELS AND LUBRICANTS | \$1,407 | \$1,245 | \$1,245 | \$1,245 | \$1,245 |
| 2003 | CONSUMABLE SUPPLIES | \$2,584,506 | \$2,729,912 | \$2,881,408 | \$2,881,408 | \$2,881,408 |
| 2004 | UTILITIES | \$108,038 | \$97,107 | \$102,107 | \$102,107 | \$102,107 |
| 2005 | TRAVEL | \$74,082 | \$80,449 | \$5,996 | \$5,996 | \$5,996 |
| 2006 | RENT - BUILDING | \$18,503 | \$16,273 | \$16,273 | \$16,273 | \$16,273 |

3.A. Strategy Request
87th Regular Session, Agency Submission, Version 1
Automated Budget and Evaluation System of Texas (ABEST)

9/15/2020 10:59:05AM

557 Texas A&M Veterinary Medical Diagnostic Laboratory

GOAL: 1 Provide Diagnostic Services Drug/Export Tests, & Disease Surveillance
OBJECTIVE: 1 Maintain Diagnostic Services for Effective Disease Mgmt & Surveillance
STRATEGY: 1 Provide Diagnostic Service and Disease Surveillance

Service Categories:

Service: 37

Income: A.2

Age: B.3

| CODE | DESCRIPTION | Exp 2019 | Est 2020 | Bud 2021 | BL 2022 | BL 2023 |
|--|---|---------------------|---------------------|---------------------|---------------------|---------------------|
| 2007 | RENT - MACHINE AND OTHER | \$17,845 | \$35,982 | \$35,982 | \$35,982 | \$35,982 |
| 2009 | OTHER OPERATING EXPENSE | \$1,750,628 | \$2,164,756 | \$2,069,275 | \$2,069,275 | \$2,069,275 |
| 5000 | CAPITAL EXPENDITURES | \$520,625 | \$254,723 | \$254,723 | \$254,723 | \$254,723 |
| TOTAL, OBJECT OF EXPENSE | | \$13,986,494 | \$15,435,927 | \$15,535,267 | \$15,535,267 | \$15,535,267 |
| Method of Financing: | | | | | | |
| 1 | General Revenue Fund | \$4,602,102 | \$5,195,420 | \$4,895,421 | \$5,090,125 | \$5,085,125 |
| SUBTOTAL, MOF (GENERAL REVENUE FUNDS) | | \$4,602,102 | \$5,195,420 | \$4,895,421 | \$5,090,125 | \$5,085,125 |
| Method of Financing: | | | | | | |
| 555 | Federal Funds | | | | | |
| | 10.304.000 Homeland Security_Agricultural | \$296,922 | \$272,727 | \$272,727 | \$272,727 | \$272,727 |
| CFDA Subtotal, Fund | 555 | \$296,922 | \$272,727 | \$272,727 | \$272,727 | \$272,727 |
| SUBTOTAL, MOF (FEDERAL FUNDS) | | \$296,922 | \$272,727 | \$272,727 | \$272,727 | \$272,727 |
| Method of Financing: | | | | | | |
| 764 | Vet Med Lab Fee Revenue, estimated | \$9,087,470 | \$9,967,780 | \$10,367,119 | \$10,172,415 | \$10,177,415 |
| SUBTOTAL, MOF (OTHER FUNDS) | | \$9,087,470 | \$9,967,780 | \$10,367,119 | \$10,172,415 | \$10,177,415 |

3.A. Strategy Request
87th Regular Session, Agency Submission, Version 1
Automated Budget and Evaluation System of Texas (ABEST)

9/15/2020 10:59:05AM

557 Texas A&M Veterinary Medical Diagnostic Laboratory

GOAL: 1 Provide Diagnostic Services Drug/Export Tests, & Disease Surveillance
OBJECTIVE: 1 Maintain Diagnostic Services for Effective Disease Mgmt & Surveillance
STRATEGY: 1 Provide Diagnostic Service and Disease Surveillance

Service Categories:

Service: 37 Income: A.2 Age: B.3

| CODE | DESCRIPTION | Exp 2019 | Est 2020 | Bud 2021 | BL 2022 | BL 2023 |
|--|-------------|---------------------|---------------------|---------------------|---------------------|---------------------|
| TOTAL, METHOD OF FINANCE (INCLUDING RIDERS) | | | | | \$15,535,267 | \$15,535,267 |
| TOTAL, METHOD OF FINANCE (EXCLUDING RIDERS) | | \$13,986,494 | \$15,435,927 | \$15,535,267 | \$15,535,267 | \$15,535,267 |
| FULL TIME EQUIVALENT POSITIONS: | | 129.8 | 140.6 | 140.6 | 140.6 | 140.6 |

STRATEGY DESCRIPTION AND JUSTIFICATION:

TVMDL promotes animal health and protects agricultural, companion animal and public health interests in Texas and beyond. TVMDL receives nearly 150,000 submissions and performs approximately 940,000 tests per year. The laboratory is accredited by the American Association of Veterinary Laboratory Diagnosticians (AAVLD), and is one of only fourteen Level 1 members of the federal National Animal Health Laboratory Network (NAHLN).

TVMDL provides many services that are vital to protecting the Texas animal and public health sectors. The agency's testing contributes to an animal and zoonotic disease surveillance system; provides an early detection, identification and response testing capacity for high consequence diseases; provides diagnostic tests to aid in commerce; and is a critical component of biosurveillance for new diseases and bioterrorism incidents.

Samples submitted to TVMDL originate from all regions of Texas and the nation, providing the foundation of a robust statewide, regional and national surveillance program. In 2019-2020, in addition to its routine submissions, TVMDL performed targeted surveillance testing for high consequence pathogens, including: pH1N1 influenza, equine piroplasmiasis, exotic Newcastle disease, scrapie, avian influenza, classical swine fever, chronic wasting disease, and pseudorabies virus. TVMDL is certified to perform testing for foot and mouth disease, African swine fever, rinderpest and contagious equine metritis. Any one of these diseases has the potential to devastate the \$18 billion Texas livestock and poultry industries.

3.A. Strategy Request
87th Regular Session, Agency Submission, Version 1
Automated Budget and Evaluation System of Texas (ABEST)

9/15/2020 10:59:05AM

557 Texas A&M Veterinary Medical Diagnostic Laboratory

GOAL: 1 Provide Diagnostic Services Drug/Export Tests, & Disease Surveillance
OBJECTIVE: 1 Maintain Diagnostic Services for Effective Disease Mgmt & Surveillance
STRATEGY: 1 Provide Diagnostic Service and Disease Surveillance

Service Categories:

Service: 37 Income: A.2 Age: B.3

| CODE | DESCRIPTION | Exp 2019 | Est 2020 | Bud 2021 | BL 2022 | BL 2023 |
|------|-------------|----------|----------|----------|---------|---------|
|------|-------------|----------|----------|----------|---------|---------|

EXTERNAL/INTERNAL FACTORS IMPACTING STRATEGY:

The ability of TVMDL to ensure effective disease management through diagnostic testing and disease surveillance would be impacted by the following factors: 1) a diversion of personnel during a high consequence disease event; 2) a budget reduction in TVMDL general revenue or loss of fee-generated revenue forcing TVMDL to reduce the number of staff available for routine diagnostic testing and delaying equipment upgrades to maintain competency; 3) a reduction in samples submitted to the laboratory secondary to an economic downturn or service interruption; 4) a loss of accreditation; and 5) an inability to meet federal biosafety and biosecurity standards and testing demands secondary to facility deficiencies. Any of the aforementioned circumstances would result in an inability to accurately and reliably perform an adequate number of diagnostic tests/services and surveillance activities.

EXPLANATION OF BIENNIAL CHANGE (includes Rider amounts):

| <u>STRATEGY BIENNIAL TOTAL - ALL FUNDS</u> | | <u>BIENNIAL CHANGE</u> | <u>EXPLANATION OF BIENNIAL CHANGE</u> | |
|--|---|----------------------------|---------------------------------------|---|
| <u>Base Spending (Est 2020 + Bud 2021)</u> | <u>Baseline Request (BL 2022 + BL 2023)</u> | | <u>\$ Amount</u> | <u>Explanation(s) of Amount (must specify MOFs and FTEs)</u> |
| \$30,971,194 | \$31,070,534 | \$99,340 | \$99,340 | Fund 764 will increase due to an expected increase in consumables supplies, as test numbers are expected to increase. |
| | | | \$99,340 | Total of Explanation of Biennial Change |

3.A. Strategy Request
 87th Regular Session, Agency Submission, Version 1
 Automated Budget and Evaluation System of Texas (ABEST)

9/15/2020 10:59:05AM

557 Texas A&M Veterinary Medical Diagnostic Laboratory

GOAL: 1 Provide Diagnostic Services Drug/Export Tests, & Disease Surveillance

OBJECTIVE: 2 Provide An Effective Drug Testing Laboratory

Service Categories:

STRATEGY: 1 Provide Drug Testing Service

Service: 38

Income: A.2

Age: B.3

| CODE | DESCRIPTION | Exp 2019 | Est 2020 | Bud 2021 | BL 2022 | BL 2023 |
|---------------------------------|--|------------------|------------------|------------------|------------------|------------------|
| Output Measures: | | | | | | |
| KEY 1 | Number of Animals Tested | 11,427.00 | 7,500.00 | 7,000.00 | 7,000.00 | 7,000.00 |
| Efficiency Measures: | | | | | | |
| 1 | Response Time for Drug Testing Service | 4.00 | 4.00 | 4.00 | 4.00 | 4.00 |
| 2 | Number of Drug Testing Cases Handled Per FTE | 1,270.00 | 1,364.00 | 1,273.00 | 1,273.00 | 1,273.00 |
| Objects of Expense: | | | | | | |
| 1001 | SALARIES AND WAGES | \$456,766 | \$295,310 | \$295,310 | \$295,310 | \$295,310 |
| 1002 | OTHER PERSONNEL COSTS | \$147,433 | \$81,398 | \$81,398 | \$81,398 | \$81,398 |
| 2003 | CONSUMABLE SUPPLIES | \$184,742 | \$189,051 | \$172,517 | \$172,517 | \$172,517 |
| 2005 | TRAVEL | \$3,680 | \$908 | \$0 | \$0 | \$0 |
| 2007 | RENT - MACHINE AND OTHER | \$9,204 | \$5,700 | \$5,700 | \$5,700 | \$5,700 |
| 2009 | OTHER OPERATING EXPENSE | \$147,972 | \$149,162 | \$149,162 | \$149,162 | \$149,162 |
| 5000 | CAPITAL EXPENDITURES | \$7,834 | \$43,765 | \$34,673 | \$34,673 | \$34,673 |
| TOTAL, OBJECT OF EXPENSE | | \$957,631 | \$765,294 | \$738,760 | \$738,760 | \$738,760 |
| Method of Financing: | | | | | | |
| 763 | Drug Testing Lab Fee Rev, estimated | \$957,631 | \$765,294 | \$738,760 | \$738,760 | \$738,760 |

3.A. Strategy Request
 87th Regular Session, Agency Submission, Version 1
 Automated Budget and Evaluation System of Texas (ABEST)

9/15/2020 10:59:05AM

557 Texas A&M Veterinary Medical Diagnostic Laboratory

GOAL: 1 Provide Diagnostic Services Drug/Export Tests, & Disease Surveillance

OBJECTIVE: 2 Provide An Effective Drug Testing Laboratory

Service Categories:

STRATEGY: 1 Provide Drug Testing Service

Service: 38

Income: A.2

Age: B.3

| CODE | DESCRIPTION | Exp 2019 | Est 2020 | Bud 2021 | BL 2022 | BL 2023 |
|---|-------------|-----------|-----------|-----------|-----------|-----------|
| SUBTOTAL, MOF (OTHER FUNDS) | | \$957,631 | \$765,294 | \$738,760 | \$738,760 | \$738,760 |
| TOTAL, METHOD OF FINANCE (INCLUDING RIDERS) | | | | | \$738,760 | \$738,760 |
| TOTAL, METHOD OF FINANCE (EXCLUDING RIDERS) | | \$957,631 | \$765,294 | \$738,760 | \$738,760 | \$738,760 |
| FULL TIME EQUIVALENT POSITIONS: | | 9.0 | 5.2 | 5.2 | 5.2 | 5.2 |

STRATEGY DESCRIPTION AND JUSTIFICATION:

TVMDL provides the drug testing for animals in equine/canine racing events and those in livestock shows. It is important to identify prohibited substances and any use of therapeutic drugs over the legal limit in racing and show animals to maintain consumer confidence in the sport and this source of tax revenue for the state.

EXTERNAL/INTERNAL FACTORS IMPACTING STRATEGY:

The numbers of animals tested is determined by the number of race tracks in operation and the number of racing days authorized to each track by the Texas Racing Commission. The number of livestock shows participating in drug testing and the number of entrants into each of these shows also impacts this strategy. Any of these factors (see Objective 1 above) could compromise the agency's ability to perform adequate testing.

3.A. Strategy Request
87th Regular Session, Agency Submission, Version 1
Automated Budget and Evaluation System of Texas (ABEST)

9/15/2020 10:59:05AM

557 Texas A&M Veterinary Medical Diagnostic Laboratory

GOAL: 1 Provide Diagnostic Services Drug/Export Tests, & Disease Surveillance

OBJECTIVE: 2 Provide An Effective Drug Testing Laboratory

Service Categories:

STRATEGY: 1 Provide Drug Testing Service

Service: 38

Income: A.2

Age: B.3

| CODE | DESCRIPTION | Exp 2019 | Est 2020 | Bud 2021 | BL 2022 | BL 2023 |
|------|-------------|----------|----------|----------|---------|---------|
|------|-------------|----------|----------|----------|---------|---------|

EXPLANATION OF BIENNIAL CHANGE (includes Rider amounts):

| <u>STRATEGY BIENNIAL TOTAL - ALL FUNDS</u> | | <u>BIENNIAL</u> | <u>EXPLANATION OF BIENNIAL CHANGE</u> | |
|--|--------------------------------------|-----------------|---------------------------------------|---|
| Base Spending (Est 2020 + Bud 2021) | Baseline Request (BL 2022 + BL 2023) | CHANGE | \$ Amount | Explanation(s) of Amount (must specify MOFs and FTEs) |
| \$1,504,054 | \$1,477,520 | \$(26,534) | \$(26,534) | Fund 763 decreases due to reduction in operating expenses over next two years, and the expected decrease in racing samples submitted. |
| | | | <u>\$(26,534)</u> | Total of Explanation of Biennial Change |

3.A. Strategy Request
87th Regular Session, Agency Submission, Version 1
Automated Budget and Evaluation System of Texas (ABEST)

9/15/2020 10:59:05AM

557 Texas A&M Veterinary Medical Diagnostic Laboratory

GOAL: 3 Indirect Administration
OBJECTIVE: 1 Indirect Administration
STRATEGY: 1 Indirect Administration

Service Categories:

Service: 09 Income: A.1 Age: B.3

| CODE | DESCRIPTION | Exp 2019 | Est 2020 | Bud 2021 | BL 2022 | BL 2023 |
|--|------------------------------------|--------------------|--------------------|--------------------|--------------------|--------------------|
| Objects of Expense: | | | | | | |
| 1001 | SALARIES AND WAGES | \$1,417,442 | \$1,116,276 | \$1,116,276 | \$1,116,276 | \$1,116,276 |
| 1002 | OTHER PERSONNEL COSTS | \$254,232 | \$167,705 | \$170,705 | \$170,705 | \$170,705 |
| 2001 | PROFESSIONAL FEES AND SERVICES | \$28,304 | \$0 | \$0 | \$0 | \$0 |
| 2002 | FUELS AND LUBRICANTS | \$0 | \$87 | \$87 | \$87 | \$87 |
| 2003 | CONSUMABLE SUPPLIES | \$3,063 | \$2,524 | \$3,274 | \$3,274 | \$3,274 |
| 2004 | UTILITIES | \$1,055 | \$123 | \$123 | \$123 | \$123 |
| 2005 | TRAVEL | \$9,426 | \$5,809 | \$1,809 | \$1,809 | \$1,809 |
| 2006 | RENT - BUILDING | \$367 | \$27 | \$27 | \$27 | \$27 |
| 2007 | RENT - MACHINE AND OTHER | \$23,468 | \$148 | \$148 | \$148 | \$148 |
| 2009 | OTHER OPERATING EXPENSE | \$128,108 | \$16,030 | \$18,030 | \$18,030 | \$18,030 |
| TOTAL, OBJECT OF EXPENSE | | \$1,865,465 | \$1,308,729 | \$1,310,479 | \$1,310,479 | \$1,310,479 |
| Method of Financing: | | | | | | |
| 1 | General Revenue Fund | \$547,738 | \$381,986 | \$304,051 | \$304,051 | \$304,051 |
| SUBTOTAL, MOF (GENERAL REVENUE FUNDS) | | \$547,738 | \$381,986 | \$304,051 | \$304,051 | \$304,051 |
| Method of Financing: | | | | | | |
| 764 | Vet Med Lab Fee Revenue, estimated | \$1,317,727 | \$926,743 | \$1,006,428 | \$1,006,428 | \$1,006,428 |

3.A. Strategy Request

9/15/2020 10:59:05AM

87th Regular Session, Agency Submission, Version 1
Automated Budget and Evaluation System of Texas (ABEST)

557 Texas A&M Veterinary Medical Diagnostic Laboratory

GOAL: 3 Indirect Administration
OBJECTIVE: 1 Indirect Administration
STRATEGY: 1 Indirect Administration

Service Categories:

Service: 09 Income: A.1 Age: B.3

| CODE | DESCRIPTION | Exp 2019 | Est 2020 | Bud 2021 | BL 2022 | BL 2023 |
|---|-------------|-------------|-------------|-------------|-------------|-------------|
| SUBTOTAL, MOF (OTHER FUNDS) | | \$1,317,727 | \$926,743 | \$1,006,428 | \$1,006,428 | \$1,006,428 |
| TOTAL, METHOD OF FINANCE (INCLUDING RIDERS) | | | | | \$1,310,479 | \$1,310,479 |
| TOTAL, METHOD OF FINANCE (EXCLUDING RIDERS) | | \$1,865,465 | \$1,308,729 | \$1,310,479 | \$1,310,479 | \$1,310,479 |
| FULL TIME EQUIVALENT POSITIONS: | | 16.5 | 12.2 | 12.2 | 12.2 | 12.2 |

STRATEGY DESCRIPTION AND JUSTIFICATION:

To provide funding for administrative, fiscal, and support services for the agency.

EXTERNAL/INTERNAL FACTORS IMPACTING STRATEGY:

EXPLANATION OF BIENNIAL CHANGE (includes Rider amounts):

| <u>STRATEGY BIENNIAL TOTAL - ALL FUNDS</u> | | BIENNIAL CHANGE | <u>EXPLANATION OF BIENNIAL CHANGE</u> | |
|--|--------------------------------------|--------------------|---------------------------------------|--|
| Base Spending (Est 2020 + Bud 2021) | Baseline Request (BL 2022 + BL 2023) | | \$ Amount | Explanation(s) of Amount (must specify MOFs and FTEs) |
| \$2,619,208 | \$2,620,958 | \$1,750 | \$1,750 | Fund 764 will increase to cover increase in longevity. |
| | | | \$1,750 | Total of Explanation of Biennial Change |

3.A. Strategy Request
 87th Regular Session, Agency Submission, Version 1
 Automated Budget and Evaluation System of Texas (ABEST)

9/15/2020 10:59:05AM

557 Texas A&M Veterinary Medical Diagnostic Laboratory

GOAL: 3 Indirect Administration

OBJECTIVE: 1 Indirect Administration

STRATEGY: 2 Infrastructure Support - In Brazos County

Service Categories:

Service: 10

Income: A.1

Age: B.3

| CODE | DESCRIPTION | Exp 2019 | Est 2020 | Bud 2021 | (1) BL 2022 | (1) BL 2023 |
|--|-------------------------------------|--------------------|--------------------|--------------------|----------------|----------------|
| Objects of Expense: | | | | | | |
| 1001 | SALARIES AND WAGES | \$165,231 | \$169,167 | \$169,167 | \$0 | \$0 |
| 1002 | OTHER PERSONNEL COSTS | \$30,647 | \$28,672 | \$28,672 | \$0 | \$0 |
| 2004 | UTILITIES | \$278,409 | \$309,420 | \$334,420 | \$0 | \$0 |
| 2009 | OTHER OPERATING EXPENSE | \$649,574 | \$674,004 | \$699,004 | \$0 | \$0 |
| TOTAL, OBJECT OF EXPENSE | | \$1,123,861 | \$1,181,263 | \$1,231,263 | \$0 | \$0 |
| Method of Financing: | | | | | | |
| 1 | General Revenue Fund | \$503,664 | \$550,347 | \$550,347 | \$0 | \$0 |
| SUBTOTAL, MOF (GENERAL REVENUE FUNDS) | | \$503,664 | \$550,347 | \$550,347 | \$0 | \$0 |
| Method of Financing: | | | | | | |
| 763 | Drug Testing Lab Fee Rev, estimated | \$26,747 | \$5,038 | \$0 | \$0 | \$0 |
| 764 | Vet Med Lab Fee Revenue, estimated | \$593,450 | \$625,878 | \$680,916 | \$0 | \$0 |
| SUBTOTAL, MOF (OTHER FUNDS) | | \$620,197 | \$630,916 | \$680,916 | \$0 | \$0 |

(1) - Formula funded strategies are not requested in 2022-23 because amounts are not determined by institutions.

3.A. Strategy Request
87th Regular Session, Agency Submission, Version 1
Automated Budget and Evaluation System of Texas (ABEST)

9/15/2020 10:59:05AM

557 Texas A&M Veterinary Medical Diagnostic Laboratory

GOAL: 3 Indirect Administration

OBJECTIVE: 1 Indirect Administration

STRATEGY: 2 Infrastructure Support - In Brazos County

Service Categories:

Service: 10

Income: A.1

Age: B.3

| CODE | DESCRIPTION | Exp 2019 | Est 2020 | Bud 2021 | BL 2022 ⁽¹⁾ | BL 2023 ⁽¹⁾ |
|------|-------------|----------|----------|----------|------------------------|------------------------|
|------|-------------|----------|----------|----------|------------------------|------------------------|

TOTAL, METHOD OF FINANCE (INCLUDING RIDERS)

\$0

\$0

TOTAL, METHOD OF FINANCE (EXCLUDING RIDERS)

\$1,123,861

\$1,181,263

\$1,231,263

\$0

\$0

FULL TIME EQUIVALENT POSITIONS:

2.3

1.9

1.9

1.9

1.9

STRATEGY DESCRIPTION AND JUSTIFICATION:

To provide funds through the Texas Higher Education Coordinating Board's formula funding to support infrastructure costs for agencies located in Brazos County . The formula generates the general revenue amount (Fund 1) and TVMDL uses Fee Revenue (Fund 763 and 764) to cover the additional costs not covered by the formula.

Items in this strategy include utilities, building maintenance and repairs, and janitorial services for facilities located inside Brazos County.

EXTERNAL/INTERNAL FACTORS IMPACTING STRATEGY:

External factors impacting this strategy include inflationary increases in the cost of utilities and materials required for repairs and maintenance of facilities, and changes in the Texas Higher Education Coordinating Board's recommended formula funding.

(1) - Formula funded strategies are not requested in 2022-23 because amounts are not determined by institutions.

3.A. Strategy Request
87th Regular Session, Agency Submission, Version 1
Automated Budget and Evaluation System of Texas (ABEST)

9/15/2020 10:59:05AM

557 Texas A&M Veterinary Medical Diagnostic Laboratory

GOAL: 3 Indirect Administration

OBJECTIVE: 1 Indirect Administration

STRATEGY: 2 Infrastructure Support - In Brazos County

Service Categories:

Service: 10

Income: A.1

Age: B.3

| CODE | DESCRIPTION | Exp 2019 | Est 2020 | Bud 2021 | (1) BL 2022 | (1) BL 2023 |
|------|-------------|----------|----------|----------|----------------|----------------|
|------|-------------|----------|----------|----------|----------------|----------------|

EXPLANATION OF BIENNIAL CHANGE (includes Rider amounts):

| <u>STRATEGY BIENNIAL TOTAL - ALL FUNDS</u> | | BIENNIAL CHANGE | <u>EXPLANATION OF BIENNIAL CHANGE</u> | |
|--|--------------------------------------|--------------------|---------------------------------------|---|
| Base Spending (Est 2020 + Bud 2021) | Baseline Request (BL 2022 + BL 2023) | | \$ Amount | Explanation(s) of Amount (must specify MOFs and FTEs) |
| \$2,412,526 | \$0 | \$(2,412,526) | \$(2,412,526) | Fund 1 is removed because it is funded by the infrastructure funding formula. Fund 763 and 764 are removed in the requested years and cover any overages above what is funded by the formula. |
| | | | \$(2,412,526) | Total of Explanation of Biennial Change |

(1) - Formula funded strategies are not requested in 2022-23 because amounts are not determined by institutions.

3.A. Strategy Request
87th Regular Session, Agency Submission, Version 1
Automated Budget and Evaluation System of Texas (ABEST)

9/15/2020 10:59:05AM

557 Texas A&M Veterinary Medical Diagnostic Laboratory

GOAL: 3 Indirect Administration

OBJECTIVE: 1 Indirect Administration

Service Categories:

STRATEGY: 3 Infrastructure Support - Outside Brazos County

Service: 10

Income: A.2

Age: B.3

| CODE | DESCRIPTION | Exp 2019 | Est 2020 | Bud 2021 | BL 2022 | BL 2023 |
|--|------------------------------------|------------------|------------------|------------------|------------|------------|
| Objects of Expense: | | | | | | |
| 1001 | SALARIES AND WAGES | \$46,511 | \$49,575 | \$49,575 | \$0 | \$0 |
| 1002 | OTHER PERSONNEL COSTS | \$9,218 | \$10,819 | \$10,819 | \$0 | \$0 |
| 2004 | UTILITIES | \$103,624 | \$77,338 | \$92,338 | \$0 | \$0 |
| 2009 | OTHER OPERATING EXPENSE | \$113 | \$5,079 | \$5,079 | \$0 | \$0 |
| 5000 | CAPITAL EXPENDITURES | \$34,003 | \$0 | \$0 | \$0 | \$0 |
| TOTAL, OBJECT OF EXPENSE | | \$193,469 | \$142,811 | \$157,811 | \$0 | \$0 |
| Method of Financing: | | | | | | |
| 1 | General Revenue Fund | \$111,232 | \$84,220 | \$84,219 | \$0 | \$0 |
| SUBTOTAL, MOF (GENERAL REVENUE FUNDS) | | \$111,232 | \$84,220 | \$84,219 | \$0 | \$0 |
| Method of Financing: | | | | | | |
| 764 | Vet Med Lab Fee Revenue, estimated | \$82,237 | \$58,591 | \$73,592 | \$0 | \$0 |
| SUBTOTAL, MOF (OTHER FUNDS) | | \$82,237 | \$58,591 | \$73,592 | \$0 | \$0 |

3.A. Strategy Request
 87th Regular Session, Agency Submission, Version 1
 Automated Budget and Evaluation System of Texas (ABEST)

9/15/2020 10:59:05AM

557 Texas A&M Veterinary Medical Diagnostic Laboratory

GOAL: 3 Indirect Administration

OBJECTIVE: 1 Indirect Administration

Service Categories:

STRATEGY: 3 Infrastructure Support - Outside Brazos County

Service: 10

Income: A.2

Age: B.3

| CODE | DESCRIPTION | Exp 2019 | Est 2020 | Bud 2021 | BL 2022 | BL 2023 |
|--|-------------|------------------|------------------|------------------|------------|------------|
| TOTAL, METHOD OF FINANCE (INCLUDING RIDERS) | | | | | \$0 | \$0 |
| TOTAL, METHOD OF FINANCE (EXCLUDING RIDERS) | | \$193,469 | \$142,811 | \$157,811 | \$0 | \$0 |
| FULL TIME EQUIVALENT POSITIONS: | | 1.1 | 1.1 | 1.1 | 1.1 | 1.1 |

STRATEGY DESCRIPTION AND JUSTIFICATION:

To provide funds to support infrastructure costs for agencies located out of Brazos County. The formula generates the general revenue amount (Fund 1) and TVMDL uses Fee Revenue (Fund 764) to cover any additional costs not covered by the formula.

This includes utilities, building maintenance and repairs, and janitorial services for the laboratories in Amarillo, Center, and Gonzales Texas.

EXTERNAL/INTERNAL FACTORS IMPACTING STRATEGY:

External factors impacting this strategy include inflationary increases in the cost of utilities and materials required for repairs and maintenance of facilities.

3.A. Strategy Request
87th Regular Session, Agency Submission, Version 1
Automated Budget and Evaluation System of Texas (ABEST)

9/15/2020 10:59:05AM

557 Texas A&M Veterinary Medical Diagnostic Laboratory

GOAL: 3 Indirect Administration

OBJECTIVE: 1 Indirect Administration

Service Categories:

STRATEGY: 3 Infrastructure Support - Outside Brazos County

Service: 10

Income: A.2

Age: B.3

| CODE | DESCRIPTION | Exp 2019 | Est 2020 | Bud 2021 | BL 2022 | BL 2023 |
|------|-------------|----------|----------|----------|---------|---------|
|------|-------------|----------|----------|----------|---------|---------|

EXPLANATION OF BIENNIAL CHANGE (includes Rider amounts):

| <u>STRATEGY BIENNIAL TOTAL - ALL FUNDS</u> | | BIENNIAL CHANGE | <u>EXPLANATION OF BIENNIAL CHANGE</u> | |
|--|--------------------------------------|--------------------|---------------------------------------|--|
| Base Spending (Est 2020 + Bud 2021) | Baseline Request (BL 2022 + BL 2023) | | \$ Amount | Explanation(s) of Amount (must specify MOFs and FTEs) |
| \$300,622 | \$0 | \$(300,622) | \$(300,622) | Fund 1 is removed because it is treated as formula in our base. Fund 764 is removed in the requested years and cover any overages above what is funded by the formula. |
| | | | <u>\$(300,622)</u> | Total of Explanation of Biennial Change |

3.A. Strategy Request
87th Regular Session, Agency Submission, Version 1
Automated Budget and Evaluation System of Texas (ABEST)

9/15/2020 10:59:05AM

557 Texas A&M Veterinary Medical Diagnostic Laboratory

GOAL: 3 Indirect Administration
OBJECTIVE: 2 Debt Service
STRATEGY: 1 Debt Service - College Station

Service Categories:

Service: 10 Income: A.2 Age: B.3

| CODE | DESCRIPTION | Exp 2019 | Est 2020 | Bud 2021 | BL 2022 | BL 2023 |
|--|----------------------|--------------------|--------------------|--------------------|--------------------|--------------------|
| Objects of Expense: | | | | | | |
| 2008 | DEBT SERVICE | \$2,923,650 | \$2,927,650 | \$2,925,650 | \$2,927,150 | \$2,932,150 |
| TOTAL, OBJECT OF EXPENSE | | \$2,923,650 | \$2,927,650 | \$2,925,650 | \$2,927,150 | \$2,932,150 |
| Method of Financing: | | | | | | |
| 1 | General Revenue Fund | \$2,923,650 | \$2,927,650 | \$2,925,650 | \$2,927,150 | \$2,932,150 |
| SUBTOTAL, MOF (GENERAL REVENUE FUNDS) | | \$2,923,650 | \$2,927,650 | \$2,925,650 | \$2,927,150 | \$2,932,150 |
| TOTAL, METHOD OF FINANCE (INCLUDING RIDERS) | | | | | \$2,927,150 | \$2,932,150 |
| TOTAL, METHOD OF FINANCE (EXCLUDING RIDERS) | | \$2,923,650 | \$2,927,650 | \$2,925,650 | \$2,927,150 | \$2,932,150 |

FULL TIME EQUIVALENT POSITIONS:**STRATEGY DESCRIPTION AND JUSTIFICATION:**

To provide funds to support the debt service of the College Station and Canyon laboratories.

EXTERNAL/INTERNAL FACTORS IMPACTING STRATEGY:

3.A. Strategy Request
 87th Regular Session, Agency Submission, Version 1
 Automated Budget and Evaluation System of Texas (ABEST)

9/15/2020 10:59:05AM

557 Texas A&M Veterinary Medical Diagnostic Laboratory

GOAL: 3 Indirect Administration
 OBJECTIVE: 2 Debt Service
 STRATEGY: 1 Debt Service - College Station

Service Categories:

Service: 10 Income: A.2 Age: B.3

| CODE | DESCRIPTION | Exp 2019 | Est 2020 | Bud 2021 | BL 2022 | BL 2023 |
|------|-------------|----------|----------|----------|---------|---------|
|------|-------------|----------|----------|----------|---------|---------|

EXPLANATION OF BIENNIAL CHANGE (includes Rider amounts):

| <u>STRATEGY BIENNIAL TOTAL - ALL FUNDS</u> | | <u>BIENNIAL CHANGE</u> | <u>EXPLANATION OF BIENNIAL CHANGE</u> | |
|--|---|----------------------------|---------------------------------------|--|
| <u>Base Spending (Est 2020 + Bud 2021)</u> | <u>Baseline Request (BL 2022 + BL 2023)</u> | | <u>\$ Amount</u> | <u>Explanation(s) of Amount (must specify MOFs and FTEs)</u> |
| \$5,853,300 | \$5,859,300 | \$6,000 | \$6,000 | Fund 1 is increased to account for debt financing schedule in FY 2022 and FY 2023. |
| | | | \$6,000 | Total of Explanation of Biennial Change |

3.A. Strategy Request

9/15/2020 10:59:05AM

87th Regular Session, Agency Submission, Version 1
 Automated Budget and Evaluation System of Texas (ABEST)

SUMMARY TOTALS:

| | | | | | |
|---|---------------------|---------------------|---------------------|---------------------|---------------------|
| OBJECTS OF EXPENSE: | \$21,050,570 | \$21,761,674 | \$21,899,230 | \$20,511,656 | \$20,516,656 |
| METHODS OF FINANCE (INCLUDING RIDERS): | | | | \$20,511,656 | \$20,516,656 |
| METHODS OF FINANCE (EXCLUDING RIDERS): | \$21,050,570 | \$21,761,674 | \$21,899,230 | \$20,511,656 | \$20,516,656 |
| FULL TIME EQUIVALENT POSITIONS: | 158.7 | 161.0 | 161.0 | 161.0 | 161.0 |

This page intentionally left blank.

This page intentionally left blank.

3.B. Rider Revisions and Additions Request

| | | | | |
|----------------------------|--|--------------------------------------|----------------------------|----------------------------|
| Agency Code: 557 | Agency Name: Texas A&M Veterinary Medical Diagnostic Laboratory | Prepared By: Vic S. Seidel | Date: 07/03/2020 | Request Level: 1 |
|----------------------------|--|--------------------------------------|----------------------------|----------------------------|

| | | |
|---|---|---|
| Current Rider Number: New | Page Number in 2020–21 GAA: III-253 | Proposed Rider Language: <u>Transfer of Regulatory Testing from Texas Animal Health Commission.</u> Contingent upon passage of legislation transferring regulatory testing from Texas Animal Health Commission to Texas A&M Veterinary Medical Diagnostic Laboratory, \$XXX in General Revenue for four new laboratory positions and all associated equipment shall be transferred to TVMDL to support regulatory testing. |
|---|---|---|

Explanation: TVMDL requests a rider addition contingent upon the passage of Legislation in the 87th Session, based on Sunset Staff Recommendations. The Sunset Staff Report has recommended eliminating the Texas Animal Health Commission's (TAHC) laboratory and transferring regulatory testing to TVMDL. The report identified \$607,086 for TAHC to fund four full time lab positions and equipment in support of regulatory testing. TVMDL requests that General Revenue be added to its base to secure the four permanent positions and equipment.

The remainder of the funding would be paid to TVMDL for the testing it performs at the direction of TAHC.

4.A. Exceptional Item Request Schedule
 87th Regular Session, Agency Submission, Version 1
 Automated Budget and Evaluation System of Texas (ABEST)

DATE: 9/15/2020
 TIME: 10:59:08AM

Agency code: 557

Agency name:

Texas A&M Veterinary Medical Diagnostic Laboratory

| CODE | DESCRIPTION | Excp 2022 | Excp 2023 |
|---|-------------------------|--------------------|--------------------|
| Item Name: Rapid Detection of Human and Animal Disease Threats Item Priority: 1 IT Component: No Anticipated Out-year Costs: Yes Involve Contracts > \$50,000: No Includes Funding for the Following Strategy or Strategies: 01-01-01 Provide Diagnostic Service and Disease Surveillance | | | |
| OBJECTS OF EXPENSE: | | | |
| 1001 | SALARIES AND WAGES | 855,000 | 855,000 |
| 2005 | TRAVEL | 50,000 | 50,000 |
| 2009 | OTHER OPERATING EXPENSE | 427,300 | 323,700 |
| 5000 | CAPITAL EXPENDITURES | 789,000 | 0 |
| TOTAL, OBJECT OF EXPENSE | | \$2,121,300 | \$1,228,700 |
| METHOD OF FINANCING: | | | |
| 1 | General Revenue Fund | 2,121,300 | 1,228,700 |
| TOTAL, METHOD OF FINANCING | | \$2,121,300 | \$1,228,700 |
| FULL-TIME EQUIVALENT POSITIONS (FTE): | | 11.00 | 11.00 |

DESCRIPTION / JUSTIFICATION:

Texas needs to mitigate the effects of disease outbreaks on public health, food security, and the financial well-being of its citizens. This request will ensure early, rapid and accurate detection of human and animal disease threats, potential bioterrorism events, changes in antimicrobial resistance of pathogens as well as the timely and effective communication of disease data to decision makers. The program will also ensure capacity to conduct human testing during pandemic situations and produce viral sampling kits when needed (as the agency did during the COVID-19 pandemic.) The recent pandemic has illustrated the direct impact TVMDL can have in responding to disease outbreaks. Investing in laboratory capacity remains of critical importance. Viruses will continue making the jump from animal (wild or domesticated) populations to humans, making robust surveillance of disease in animal populations critical. Unlike other state agencies that charge regulatory fees for services provided by no other entity, TVMDL directly competes with other public and private laboratories conducting testing across the country. Keeping TVMDL fees competitive and low encourages submissions, which allows the agency to maintain a robust surveillance program to detect critically important diseases that pose catastrophic threats to public health, animal health, food safety, and the economic viability of the \$18 billion livestock industry in Texas.

This program will invest in professionals and tools required to provide training programs for diagnostic laboratory specialists needed to augment existing staff and replace expected losses of expertise. Sample handling automation and robotic tools will allow machines to take over routine and repetitive testing procedures, increasing efficiency and freeing the skilled workforce for higher-level tasks, such as data analysis, novel assay development, and communication of information.

4.A. Exceptional Item Request Schedule
 87th Regular Session, Agency Submission, Version 1
 Automated Budget and Evaluation System of Texas (ABEST)

DATE: **9/15/2020**
 TIME: **10:59:08AM**

Agency code: **557**

Agency name:

Texas A&M Veterinary Medical Diagnostic Laboratory

| CODE | DESCRIPTION | Excp 2022 | Excp 2023 |
|-------------|--------------------|------------------|------------------|
|-------------|--------------------|------------------|------------------|

EXTERNAL/INTERNAL FACTORS:

A diagnostic laboratory fully-staffed with trained, experienced veterinary diagnosticians that will recognize the first signs of a potentially devastating animal or zoonotic disease threat (coronavirus, influenza, anthrax, etc) or changes in antimicrobial resistance of pathogens is vital to protecting public health and animal health. This effort will employ five laboratory professionals, two veterinary trainees, three technical positions and one support staff, to be supplemented by significant assistance and involvement by current TVMDL veterinarians, scientists, and IT professionals. Equipment needs include two automated liquid handling robots, sample preparation robots, barcoding instrumentation, computer-to-instrument interfacing software, high throughput testing platforms, and analysis and reporting software.

TVMDL would be able to provide real time analysis and reporting of disease surveillance data that will provide baseline prevalence rates for diseases and offer specific outbreak data on the health of animal populations and the threat to human populations, the food supply and the economy. Leveraging laboratory automation will maximize workflow efficiency and utilization of staff, expedite testing results, reduce human errors and allow for increased throughput at TVMDL. Increased automation will also aid in processing when human resources are strained and diminished due to infected or exposed lab technicians having to stay home and/or social distancing regulations.

PCLS TRACKING KEY:

DESCRIPTION OF ANTICIPATED OUT-YEAR COSTS :

Out year costs beyond FY 2022 and FY 2023 will include salary and personnel costs to continue programs.

ESTIMATED ANTICIPATED OUT-YEAR COSTS FOR ITEM:

| 2024 | 2025 | 2026 |
|-------------|-------------|-------------|
| \$1,228,700 | \$1,228,700 | \$1,228,700 |

4.A. Exceptional Item Request Schedule
 87th Regular Session, Agency Submission, Version 1
 Automated Budget and Evaluation System of Texas (ABEST)

DATE: **9/15/2020**
 TIME: **10:59:08AM**

Agency code: **557**

Agency name:

Texas A&M Veterinary Medical Diagnostic Laboratory

| CODE | DESCRIPTION | Excp 2022 | Excp 2023 |
|---|-------------------------|------------------|------------------|
| <p align="center"> Item Name: Restoration of the 5% Reduction Item Priority: 2 IT Component: No Anticipated Out-year Costs: Yes Involve Contracts > \$50,000: No Includes Funding for the Following Strategy or Strategies: 01-01-01 Provide Diagnostic Service and Disease Surveillance </p> | | | |
| OBJECTS OF EXPENSE: | | | |
| 1001 | SALARIES AND WAGES | 217,395 | 217,395 |
| 2005 | TRAVEL | 37,226 | 37,227 |
| 2009 | OTHER OPERATING EXPENSE | 62,741 | 62,740 |
| TOTAL, OBJECT OF EXPENSE | | \$317,362 | \$317,362 |
| METHOD OF FINANCING: | | | |
| 1 | General Revenue Fund | 317,362 | 317,362 |
| TOTAL, METHOD OF FINANCING | | \$317,362 | \$317,362 |
| FULL-TIME EQUIVALENT POSITIONS (FTE): | | 2.00 | 2.00 |

DESCRIPTION / JUSTIFICATION:

A restoration of the 5% reduction is critical to ensure the agency maintains services to its clients. This reduction jeopardizes our ability to meet high volume testing requirements, adequately perform surveillance, and respond to a high consequence disease event. These activities help ensure the health of our agricultural, companion animal, and public health sectors. Funding reductions will directly reduce services to Texans, including slower testing results and reduction in the kinds and amount of testing services available.

At the onset of the pandemic, all four TVMDL laboratory facilities maintained critical diagnostic testing services required by the livestock (beef, dairy, pork, sheep, goat) and poultry industries to maintain production of meat, milk, eggs and associated products. The livestock and poultry sector is a significant portion of the state's economy. Maintaining the food supply is also a significant public health issue.

A restoration of funding allows TVMDL to continue robust biosurveillance for the early detection of important zoonotic diseases. The current pandemic has highlighted the profound impact testing has on maintaining surveillance on the human population. TVMDL's mission and purpose for testing have never been so important.

EXTERNAL/INTERNAL FACTORS:

.

PCLS TRACKING KEY:

4.A. Exceptional Item Request Schedule
87th Regular Session, Agency Submission, Version 1
Automated Budget and Evaluation System of Texas (ABEST)

DATE: **9/15/2020**
TIME: **10:59:08AM**

Agency code: **557**

Agency name:

Texas A&M Veterinary Medical Diagnostic Laboratory

| CODE | DESCRIPTION | Excp 2022 | Excp 2023 |
|-------------|--------------------|------------------|------------------|
|-------------|--------------------|------------------|------------------|

DESCRIPTION OF ANTICIPATED OUT-YEAR COSTS :

Restoration of the 5% Reduction.

ESTIMATED ANTICIPATED OUT-YEAR COSTS FOR ITEM:

| 2024 | 2025 | 2026 |
|-------------|-------------|-------------|
| \$317,362 | \$317,362 | \$317,362 |

4.B. Exceptional Items Strategy Allocation Schedule
87th Regular Session, Agency Submission, Version 1
Automated Budget and Evaluation System of Texas (ABEST)

DATE: 9/15/2020
TIME: 10:59:08AM

| Agency code: | 557 | Agency name: | Texas A&M Veterinary Medical Diagnostic Laboratory | | |
|--|---|---|---|--------------------|--------------------|
| Code | Description | | | Excp 2022 | Excp 2023 |
| Item Name: | Rapid Detection of Human and Animal Disease Threats | | | | |
| Allocation to Strategy: | 1-1-1 | Provide Diagnostic Service and Disease Surveillance | | | |
| OBJECTS OF EXPENSE: | | | | | |
| | 1001 | SALARIES AND WAGES | | 855,000 | 855,000 |
| | 2005 | TRAVEL | | 50,000 | 50,000 |
| | 2009 | OTHER OPERATING EXPENSE | | 427,300 | 323,700 |
| | 5000 | CAPITAL EXPENDITURES | | 789,000 | 0 |
| TOTAL, OBJECT OF EXPENSE | | | | \$2,121,300 | \$1,228,700 |
| METHOD OF FINANCING: | | | | | |
| | 1 | General Revenue Fund | | 2,121,300 | 1,228,700 |
| TOTAL, METHOD OF FINANCING | | | | \$2,121,300 | \$1,228,700 |
| FULL-TIME EQUIVALENT POSITIONS (FTE): | | | | 11.0 | 11.0 |

4.B. Exceptional Items Strategy Allocation Schedule
 87th Regular Session, Agency Submission, Version 1
 Automated Budget and Evaluation System of Texas (ABEST)

DATE: 9/15/2020
 TIME: 10:59:08AM

| Agency code: | 557 | Agency name: | Texas A&M Veterinary Medical Diagnostic Laboratory | | |
|--|---------------------------------|---|---|------------------|------------------|
| Code | Description | | | Excp 2022 | Excp 2023 |
| Item Name: | Restoration of the 5% Reduction | | | | |
| Allocation to Strategy: | 1-1-1 | Provide Diagnostic Service and Disease Surveillance | | | |
| OBJECTS OF EXPENSE: | | | | | |
| | 1001 | SALARIES AND WAGES | | 217,395 | 217,395 |
| | 2005 | TRAVEL | | 37,226 | 37,227 |
| | 2009 | OTHER OPERATING EXPENSE | | 62,741 | 62,740 |
| TOTAL, OBJECT OF EXPENSE | | | | \$317,362 | \$317,362 |
| METHOD OF FINANCING: | | | | | |
| | 1 | General Revenue Fund | | 317,362 | 317,362 |
| TOTAL, METHOD OF FINANCING | | | | \$317,362 | \$317,362 |
| FULL-TIME EQUIVALENT POSITIONS (FTE): | | | | 2.0 | 2.0 |

4.C. Exceptional Items Strategy Request
87th Regular Session, Agency Submission, Version 1
Automated Budget and Evaluation System of Texas (ABEST)

DATE: 9/15/2020
TIME: 10:59:08AM

Agency Code: **557** Agency name: **Texas A&M Veterinary Medical Diagnostic Laboratory**

GOAL: 1 Provide Diagnostic Services Drug/Export Tests, & Disease Surveillance

OBJECTIVE: 1 Maintain Diagnostic Services for Effective Disease Mgmt & Surveillance

STRATEGY: 1 Provide Diagnostic Service and Disease Surveillance

Service Categories:

Service: 37 Income: A.2 Age: B.3

| CODE | DESCRIPTION | Excp 2022 | Excp 2023 |
|----------------------------------|-------------------------|--------------------|--------------------|
| OBJECTS OF EXPENSE: | | | |
| 1001 | SALARIES AND WAGES | 1,072,395 | 1,072,395 |
| 2005 | TRAVEL | 87,226 | 87,227 |
| 2009 | OTHER OPERATING EXPENSE | 490,041 | 386,440 |
| 5000 | CAPITAL EXPENDITURES | 789,000 | 0 |
| Total, Objects of Expense | | \$2,438,662 | \$1,546,062 |

METHOD OF FINANCING:

| | | | |
|---|----------------------|-----------|-----------|
| 1 | General Revenue Fund | 2,438,662 | 1,546,062 |
|---|----------------------|-----------|-----------|

| | | |
|---------------------------------|--------------------|--------------------|
| Total, Method of Finance | \$2,438,662 | \$1,546,062 |
|---------------------------------|--------------------|--------------------|

| | | |
|--|------|------|
| FULL-TIME EQUIVALENT POSITIONS (FTE): | 13.0 | 13.0 |
|--|------|------|

EXCEPTIONAL ITEM(S) INCLUDED IN STRATEGY:

Rapid Detection of Human and Animal Disease Threats

Restoration of the 5% Reduction

This page intentionally left blank.

6.A. Historically Underutilized Business Supporting Schedule
 87th Regular Session, Agency Submission, Version 1
 Automated Budget and Evaluation System of Texas (ABEST)

Date: 9/15/2020
 Time: 10:59:08AM

Agency Code: 557 Agency: Texas A&M Veterinary Medical Diagnostic Laboratory

COMPARISON TO STATEWIDE HUB PROCUREMENT GOALS

A. Fiscal Year - HUB Expenditure Information

| Statewide HUB Goals | Procurement Category | % Goal | HUB Expenditures FY 2018 | | | Total Expenditures | | HUB Expenditures FY 2019 | | | Total Expenditures | |
|------------------------|---------------------------|--------|--------------------------|--------|------------------|-----------------------|--------|--------------------------|-------|------------------|-----------------------|--|
| | | | % Actual | Diff | Actual \$ | FY 2018 | % Goal | % Actual | Diff | Actual \$ | FY 2019 | |
| 11.2% | Heavy Construction | 0.0 % | 0.0% | 0.0% | \$0 | \$0 | 0.0 % | 0.0% | 0.0% | \$0 | \$0 | |
| 21.1% | Building Construction | 0.0 % | 0.0% | 0.0% | \$0 | \$0 | 0.0 % | 0.0% | 0.0% | \$0 | \$0 | |
| 32.9% | Special Trade | 32.9 % | 12.6% | -20.3% | \$1,597 | \$12,700 | 6.5 % | 0.0% | -6.5% | \$0 | \$42,885 | |
| 23.7% | Professional Services | 0.0 % | 0.0% | 0.0% | \$0 | \$0 | 0.0 % | 0.0% | 0.0% | \$0 | \$0 | |
| 26.0% | Other Services | 13.0 % | 10.5% | -2.5% | \$55,604 | \$531,245 | 4.5 % | 4.5% | 0.0% | \$29,456 | \$656,101 | |
| 21.1% | Commodities | 23.5 % | 18.9% | -4.6% | \$636,971 | \$3,364,308 | 21.7 % | 26.0% | 4.3% | \$958,754 | \$3,691,150 | |
| | Total Expenditures | | 17.8% | | \$694,172 | \$3,908,253 | | 22.5% | | \$988,210 | \$4,390,136 | |

B. Assessment of Fiscal Year - Efforts to Meet HUB Procurement Goals

Attainment:

In FY 2019, the agency exceeded the statewide goal in commodity purchases by 2.45%. This category represents 84.01% of total expenditures.

Applicability:

The heavy construction and building and construction categories not applicable due to agency's operations in FY 2018 or FY 2019 as neither category had budgeted or actual expenditures.

Due to no Building Construction funding, thus no expenditures in professional services in FY 2018.

-In fiscal year 2018 "Special Trade" expenditures accounted for only .32% of total expenditures.

-In fiscal year 2019 "Special Trade" expenditures accounted for only .98% of total expenditures.

Factors Affecting Attainment:

In both fiscal years, 35% in FY18 and 55% in FY19 of the agency's biddable purchases were made against existing contracts, such as: State Term, TXMAS, DIR, TAMU System wide contracts and cooperative contracts, as these contracts represented best value to the agency in both time and financial savings. Given the nature of agency mission and the resulting highly specialized laboratory scientific products, supplies and services, locating qualified HUB vendors is challenging as there are very few HUBs listed in the specific commodity codes. In FY18 45% of the agency's expenditures were sole source purchases, only available from one manufacturer. In FY19 57.14% were sole source purchases with 38% multiyear renewals and 10% from governmental entities. For purchases requiring bids in FY18, 50% of the HUB vendors solicited responded, with only 25% of those responding, being competitive enough to receive an award. Not all contract decisions such as fleet card and insurance expenditures are within the agencies control. The Agency is required to utilize the TAMUS agreement for facilities, grounds and custodial services. The agency captures what subcontracting opportunities that are reported.

6.A. Historically Underutilized Business Supporting Schedule
87th Regular Session, Agency Submission, Version 1
Automated Budget and Evaluation System of Texas (ABEST)

Date: **9/15/2020**
Time: **10:59:08AM**

Agency Code: **557** Agency: **Texas A&M Veterinary Medical Diagnostic Laboratory**

"Good-Faith" Efforts:

The agency made the following good faith efforts to comply with statewide HUB procurement goals per 34 TAC 20.285:

1. Use training to emphasize the need to solicit from a diverse of ethnicities and service disabled veterans.
2. Encourage minority business to become HUB certified through the State of Texas and participate in all areas of procurement at the Agency
3. Participate in activities coordinated by other members of the A&M System, HUB Discussion Workgroup, Outreach Legislative Committee, and coordination of Vendor Forums.
4. Monitor HUB Subcontracting Plans on projects over \$100,000 to make sure they meet HUB requirements.
5. Recruit Mentor's and Protégé's to become a part of the Mentor/Protégé program with the State of Texas.
6. Keep the Director and units informed on monthly and year to date HUB expenditures and activities.
7. Actively participate in the Texas Universities HUB Coordinators Alliance - Gulf Coast Chapter to promote the HUB Program.
8. Educate vendors on how to become HUB certified through the State of Texas.
9. Promote HUB through training of new employees in AggieBuy with purchasing role. On-Line web base training thru Traintraq is available.

6.G. HOMELAND SECURITY FUNDING SCHEDULE - PART A - TERRORISMDATE: 9/15/2020
TIME: 10:59:09AM87th Regular Session, Agency Submission, Version 1
Automated Budget and Evaluation System of Texas (ABEST)Agency code: **557** Agency name: **Texs A&M Vet Med Diagn Lab**

| CODE | DESCRIPTION | Exp 2019 | Est 2020 | Bud 2021 | BL 2022 | BL 2023 |
|---------------------------------------|---|------------------|------------------|------------------|------------------|------------------|
| OBJECTS OF EXPENSE | | | | | | |
| 1001 | SALARIES AND WAGES | \$139,571 | \$114,043 | \$112,145 | \$112,145 | \$112,145 |
| 1002 | OTHER PERSONNEL COSTS | \$29,741 | \$24,372 | \$26,163 | \$26,163 | \$26,163 |
| 2003 | CONSUMABLE SUPPLIES | \$0 | \$8,384 | \$7,000 | \$7,000 | \$7,000 |
| 2009 | OTHER OPERATING EXPENSE | \$2,377 | \$2,024 | \$2,500 | \$2,500 | \$2,500 |
| 5000 | CAPITAL EXPENDITURES | \$125,233 | \$123,904 | \$124,919 | \$124,919 | \$124,919 |
| TOTAL, OBJECTS OF EXPENSE | | \$296,922 | \$272,727 | \$272,727 | \$272,727 | \$272,727 |
| METHOD OF FINANCING | | | | | | |
| 555 | Federal Funds | | | | | |
| | CFDA 10.304.000, Homeland Security_Agricultural | \$296,922 | \$272,727 | \$272,727 | \$272,727 | \$272,727 |
| | Subtotal, MOF (Federal Funds) | \$296,922 | \$272,727 | \$272,727 | \$272,727 | \$272,727 |
| TOTAL, METHOD OF FINANCE | | \$296,922 | \$272,727 | \$272,727 | \$272,727 | \$272,727 |
| FULL-TIME-EQUIVALENT POSITIONS | | 1.3 | 0.9 | 0.9 | 0.9 | 0.9 |

NO FUNDS WERE PASSED THROUGH TO LOCAL ENTITIES**NO FUNDS WERE PASSED THROUGH TO OTHER STATE AGENCIES OR INSTITUTIONS OF HIGHER EDUCATION****USE OF HOMELAND SECURITY FUNDS**

The Texas A&M Veterinary Medical Diagnostic Laboratory (TVMDL) utilizes funding to enhance diagnostic laboratory systems. These enhanced systems increase TVMDL's capacity for detecting, identifying, characterizing, and responding to high consequence agricultural, emerging and/or zoonotic diseases. Monies are utilized to enhance quality systems, information management, sample receipt and processing, testing capacity, training, and outreach activities.

6.G. HOMELAND SECURITY FUNDING SCHEDULE - PART C - COVID-19 RELATED EXPENDITURESDATE: 9/15/2020
TIME: 10:59:09AM87th Regular Session, Agency Submission, Version 1
Automated Budget and Evaluation System of Texas (ABEST)Agency code: **557** Agency name: **Texs A&M Vet Med Diagn Lab**

| CODE | DESCRIPTION | Exp 2019 | Est 2020 | Bud 2021 | BL 2022 | BL 2023 |
|---------------------------------------|------------------------------|------------|------------------|------------------|------------|------------|
| OBJECTS OF EXPENSE | | | | | | |
| 1001 | SALARIES AND WAGES | \$0 | \$3,781 | \$0 | \$0 | \$0 |
| 2003 | CONSUMABLE SUPPLIES | \$0 | \$877,592 | \$250,000 | \$0 | \$0 |
| TOTAL, OBJECTS OF EXPENSE | | \$0 | \$881,373 | \$250,000 | \$0 | \$0 |
| METHOD OF FINANCING | | | | | | |
| 8888 | Local/Not Appropriated Funds | \$0 | \$881,373 | \$250,000 | \$0 | \$0 |
| | Subtotal, MOF (Other Funds) | \$0 | \$881,373 | \$250,000 | \$0 | \$0 |
| TOTAL, METHOD OF FINANCE | | \$0 | \$881,373 | \$250,000 | \$0 | \$0 |
| FULL-TIME-EQUIVALENT POSITIONS | | 0.0 | 0.2 | 0.0 | 0.0 | 0.0 |

NO FUNDS WERE PASSED THROUGH TO LOCAL ENTITIES**NO FUNDS WERE PASSED THROUGH TO OTHER STATE AGENCIES OR INSTITUTIONS OF HIGHER EDUCATION****USE OF HOMELAND SECURITY FUNDS**

TVMDL was deemed an essential service at the onset of the pandemic. Laboratory locations remained open to conduct testing at all four locations. Two TVMDL laboratory facilities (College Station and Amarillo) have received certification under the HHS/CMS/CLIA program to conduct polymerase chain reaction (PCR) testing for COVID-19 on human samples. TVMDL is partnering with a local human healthcare institution in each location to facilitate this testing, CHI St. Joseph in College Station and Amarillo Pathology Group in Amarillo. These expenses are used to conduct COVID-19 testing at TVMDL facilities and the agency is reimbursed for all expenses.

TVMDL experienced an 11.48% drop in fee revenues between March and May. Fee revenues (Fund 764) declined \$411,480 during the period. Sample submission declined approximately 6% over last fiscal year.

Beginning in June, and continuing through August, TVMDL saw fee revenues rebound to levels seen during the same period last fiscal year. The full effect on future revenue collections is not known at this time, but TVMDL continues to monitor the situation. As stay at home orders are gradually lifted over the summer months, it is the hope that samples submissions increase. Funding needs for FY 2022 and 2023 are not known at this time.

This page intentionally left blank.

6.H Estimated Funds Outside the Institution's Bill Pattern

Texas A&M Veterinary Medical Diagnostic Laboratory (557)

Estimated Funds Outside the Institution's Bill Pattern

2020-21 and 2022-23 Biennia

| | 2020-21 Biennium | | | | 2022-23 Biennium | | | |
|--|----------------------|----------------------|----------------------|---------------------|----------------------|----------------------|----------------------|---------------------|
| | FY 2020 Revenue | FY 2021 Revenue | Biennium Total | Percent of Total | FY 2022 Revenue | FY 2023 Revenue | Biennium Total | Percent of Total |
| APPROPRIATED SOURCES INSIDE THE BILL PATTERN | | | | | | | | |
| State Appropriations (excluding HEGI & State Paid Fringes) | \$ 9,267,018 | \$ 9,267,017 | \$ 18,534,035 | | \$ 8,321,326 | \$ 8,321,326 | \$ 16,642,652 | |
| 5% Reduction | \$ (127,395) | \$ (507,329) | | | | | | |
| Federal Appropriations | 272,727 | 272,727 | 545,454 | | 272,727 | 272,727 | 545,454 | |
| Endowment and Interest Income | - | - | - | | - | - | - | |
| Sales and Services of Educational Activities (net) | 12,625,089 | 13,000,000 | 25,625,089 | | 13,000,000 | 13,000,000 | 26,000,000 | |
| Sales and Services of Hospitals (net) | - | - | - | | - | - | - | |
| Other Income | - | - | - | | - | - | - | |
| Total | 22,037,439 | 22,032,415 | 44,704,578 | 95.6% | 21,594,053 | 21,594,053 | 43,188,106 | 95.6% |
| APPROPRIATED SOURCES OUTSIDE THE BILL PATTERN | | | | | | | | |
| State Appropriations (HEGI & State Paid Fringes) | \$ 932,310 | \$ 932,310 | \$ 1,864,620 | | \$ 932,310 | \$ 932,310 | \$ 1,864,620 | |
| Higher Education Assistance Funds | - | - | - | | - | - | - | |
| Available University Fund | - | - | - | | - | - | - | |
| State Grants and Contracts | - | - | - | | - | - | - | |
| Total | 932,310 | 932,310 | 1,864,620 | 4.0% | 932,310 | 932,310 | 1,864,620 | 4.1% |
| NON-APPROPRIATED SOURCES | | | | | | | | |
| Tuition and Fees (net of Discounts and Allowances) | - | - | - | | - | - | - | |
| Federal Grants and Contracts | - | - | - | | - | - | - | |
| State Grants and Contracts | - | - | - | | - | - | - | |
| Local Government Grants and Contracts | - | - | - | | - | - | - | |
| Private Gifts and Grants | - | - | - | | - | - | - | |
| Endowment and Interest Income | 40,632 | 37,700 | 78,332 | | 10,000 | 10,000 | 20,000 | |
| Sales and Services of Educational Activities (net) | - | - | - | | - | - | - | |
| Sales and Services of Hospitals (net) | - | - | - | | - | - | - | |
| Professional Fees (net) | - | - | - | | - | - | - | |
| Auxiliary Enterprises (net) | - | - | - | | - | - | - | |
| Other Income - Designated | 73,000 | 50,000 | 123,000 | | 50,000 | 50,000 | 100,000 | |
| Other Income - COVID-19 Reimbursements * | 1,033,740 | 250,000 | | | - | - | | |
| Total | 1,147,372 | 337,700 | 201,332 | 0.4% | 60,000 | 60,000 | 120,000 | 0.3% |
| TOTAL SOURCES | \$ 24,117,121 | \$ 23,302,425 | \$ 46,770,530 | 100.0% | \$ 22,586,363 | \$ 22,586,363 | \$ 45,172,726 | 100.0% |

* Funding for COVID-19 related reimbursements are not expected to continue into FY 2022-23. TVMDL is reimbursed for all testing supplies and kits used by our human healthcare partners under our COVID-19 testing arrangement.

6.L. Document Production Standards

Summary of Savings Due to Improved Document Production Standards

| | | |
|---------------------|--|---------------------|
| Agency Code: | Agency Name: | Prepared By: |
| 557 | Texas A&M Veterinary Medical Diagnostic Laboratory | Dr. Bruce Akey |

| Documented Production Standards Strategies | Estimated 2020 | Budgeted 2021 |
|---|-------------------|------------------|
| 1. | \$0 | \$0 |
| 2. | \$0 | \$0 |
| 3. | \$0 | \$0 |
| 4. | \$0 | \$0 |
| Total, All Strategies | \$0 | \$0 |
| Total Estimated Paper Volume Reduced | - | - |

Description:

Chapter 2052 of the Government Code (State Agency Reports and Publications) addresses similar issues as the rider provision. Texas A&M Veterinary Medical Diagnostic Laboratory has been following the statutory requirements in this chapter since they were enacted; there are no cost savings for this biennium.

Schedule 3B: Staff Group Insurance Data Elements (UT/A&M)
 87th Regular Session, Agency Submission, Version 1
 Automated Budget and Evaluation System of Texas (ABEST)

9/15/2020 10:59:10AM

557 Texas A&M Veterinary Medical Diagnostic Laboratory

| | E&G Enrollment | GR Enrollment | GR-D/OEGI Enrollment | Total E&G (Check) | Local Non-E&G |
|----------------------------------|---------------------------|----------------------|-----------------------------|------------------------------|--------------------------|
| GR & GR-D Percentages | | | | | |
| GR % | 100.00% | | | | |
| GR-D/Other % | 0.00% | | | | |
| Total Percentage | 100.00% | | | | |
| FULL TIME ACTIVES | | | | | |
| 1a Employee Only | 32 | 32 | 0 | 32 | 65 |
| 2a Employee and Children | 6 | 6 | 0 | 6 | 12 |
| 3a Employee and Spouse | 4 | 4 | 0 | 4 | 9 |
| 4a Employee and Family | 7 | 7 | 0 | 7 | 14 |
| 5a Eligible, Opt Out | 2 | 2 | 0 | 2 | 5 |
| 6a Eligible, Not Enrolled | 0 | 0 | 0 | 0 | 0 |
| Total for This Section | 51 | 51 | 0 | 51 | 105 |
| PART TIME ACTIVES | | | | | |
| 1b Employee Only | 0 | 0 | 0 | 0 | 0 |
| 2b Employee and Children | 0 | 0 | 0 | 0 | 0 |
| 3b Employee and Spouse | 0 | 0 | 0 | 0 | 0 |
| 4b Employee and Family | 0 | 0 | 0 | 0 | 0 |
| 5b Eligible, Opt Out | 1 | 1 | 0 | 1 | 1 |
| 6b Eligible, Not Enrolled | 0 | 0 | 0 | 0 | 0 |
| Total for This Section | 1 | 1 | 0 | 1 | 1 |
| Total Active Enrollment | 52 | 52 | 0 | 52 | 106 |

Schedule 3B: Staff Group Insurance Data Elements (UT/A&M)

9/15/2020 10:59:10AM

87th Regular Session, Agency Submission, Version 1

Automated Budget and Evaluation System of Texas (ABEST)

557 Texas A&M Veterinary Medical Diagnostic Laboratory

| | E&G Enrollment | GR Enrollment | GR-D/OEGI Enrollment | Total E&G (Check) | Local Non-E&G |
|-----------------------------------|----------------|---------------|----------------------|-------------------|---------------|
| FULL TIME RETIREES by ERS | | | | | |
| 1c Employee Only | 12 | 12 | 0 | 12 | 25 |
| 2c Employee and Children | 1 | 1 | 0 | 1 | 0 |
| 3c Employee and Spouse | 10 | 10 | 0 | 10 | 19 |
| 4c Employee and Family | 0 | 0 | 0 | 0 | 0 |
| 5c Eligible, Opt Out | 0 | 0 | 0 | 0 | 0 |
| 6c Eligible, Not Enrolled | 0 | 0 | 0 | 0 | 0 |
| Total for This Section | 23 | 23 | 0 | 23 | 44 |
| PART TIME RETIREES by ERS | | | | | |
| 1d Employee Only | 0 | 0 | 0 | 0 | 0 |
| 2d Employee and Children | 0 | 0 | 0 | 0 | 0 |
| 3d Employee and Spouse | 0 | 0 | 0 | 0 | 0 |
| 4d Employee and Family | 0 | 0 | 0 | 0 | 0 |
| 5d Eligible, Opt Out | 0 | 0 | 0 | 0 | 0 |
| 6d Eligible, Not Enrolled | 0 | 0 | 0 | 0 | 0 |
| Total for This Section | 0 | 0 | 0 | 0 | 0 |
| Total Retirees Enrollment | 23 | 23 | 0 | 23 | 44 |
| TOTAL FULL TIME ENROLLMENT | | | | | |
| 1e Employee Only | 44 | 44 | 0 | 44 | 90 |
| 2e Employee and Children | 7 | 7 | 0 | 7 | 12 |
| 3e Employee and Spouse | 14 | 14 | 0 | 14 | 28 |
| 4e Employee and Family | 7 | 7 | 0 | 7 | 14 |
| 5e Eligible, Opt Out | 2 | 2 | 0 | 2 | 5 |
| 6e Eligible, Not Enrolled | 0 | 0 | 0 | 0 | 0 |
| Total for This Section | 74 | 74 | 0 | 74 | 149 |

Schedule 3B: Staff Group Insurance Data Elements (UT/A&M)

9/15/2020 10:59:10AM

87th Regular Session, Agency Submission, Version 1

Automated Budget and Evaluation System of Texas (ABEST)

557 Texas A&M Veterinary Medical Diagnostic Laboratory

| | E&G Enrollment | GR Enrollment | GR-D/OEGI Enrollment | Total E&G (Check) | Local Non-E&G |
|-------------------------------|---------------------------|----------------------|---------------------------------|------------------------------|--------------------------|
| TOTAL ENROLLMENT | | | | | |
| 1f Employee Only | 44 | 44 | 0 | 44 | 90 |
| 2f Employee and Children | 7 | 7 | 0 | 7 | 12 |
| 3f Employee and Spouse | 14 | 14 | 0 | 14 | 28 |
| 4f Employee and Family | 7 | 7 | 0 | 7 | 14 |
| 5f Eligible, Opt Out | 3 | 3 | 0 | 3 | 6 |
| 6f Eligible, Not Enrolled | 0 | 0 | 0 | 0 | 0 |
| Total for This Section | 75 | 75 | 0 | 75 | 150 |

Schedule 4: Computation of OASI
87th Regular Session, Agency Submission, Version 1
Automated Budget and Evaluation System of Texas (ABEST)

Agency 557 Texas A&M Veterinary Medical Diagnostic Laboratory

| Proportionality Percentage Based on Comptroller Accounting Policy Statement #011, Exhibit 2 | 2019 | | 2020 | | 2021 | | 2022 | | 2023 | |
|---|-----------------------|-------------------------------|-----------------------|-------------------------------|-----------------------|-------------------------------|-----------------------|-------------------------------|-----------------------|-------------------------------|
| | <u>% to Total</u> | <u>Allocation of OASI</u> | <u>% to Total</u> | <u>Allocation of OASI</u> | <u>% to Total</u> | <u>Allocation of OASI</u> | <u>% to Total</u> | <u>Allocation of OASI</u> | <u>% to Total</u> | <u>Allocation of OASI</u> |
| General Revenue (% to Total) | 30.5089 | \$202,809 | 33.0458 | \$229,055 | 31.0012 | \$215,425 | 31.6846 | \$215,135 | 31.6846 | \$215,135 |
| Other Educational and General Funds (% to Total) | 69.4911 | \$461,946 | 66.9542 | \$464,090 | 68.9988 | \$479,468 | 68.3154 | \$463,853 | 68.3154 | \$463,853 |
| Health-Related Institutions Patient Income (% to Total) | 0.0000 | \$0 | 0.0000 | \$0 | 0.0000 | \$0 | 0.0000 | \$0 | 0.0000 | \$0 |
| Grand Total, OASI (100%) | 100.0000 | \$664,755 | 100.0000 | \$693,145 | 100.0000 | \$694,893 | 100.0000 | \$678,988 | 100.0000 | \$678,988 |

Schedule 5: Calculation of Retirement Proportionality and ORP Differential

9/15/2020 10:59:10AM

87th Regular Session, Agency Submission, Version 1

Automated Budget and Evaluation System of Texas (ABEST)

557 Texas A&M Veterinary Medical Diagnostic Laboratory

| Description | Act 2019 | Act 2020 | Bud 2021 | Est 2022 | Est 2023 |
|--|-----------|-----------|-----------|-----------|-----------|
| Proportionality Amounts | | | | | |
| Gross Educational and General Payroll - Subject To TRS Retirement | 6,586,475 | 6,587,778 | 6,594,365 | 6,594,365 | 6,594,365 |
| Employer Contribution to TRS Retirement Programs | 447,880 | 494,083 | 494,577 | 511,063 | 527,549 |
| Gross Educational and General Payroll - Subject To ORP Retirement | 2,484,418 | 2,377,610 | 2,379,988 | 2,379,988 | 2,379,988 |
| Employer Contribution to ORP Retirement Programs | 163,972 | 156,922 | 157,079 | 157,079 | 157,079 |
| Proportionality Percentage | | | | | |
| General Revenue | 30.5089 % | 33.0458 % | 31.0012 % | 31.6846 % | 31.6846 % |
| Other Educational and General Income | 69.4911 % | 66.9542 % | 68.9988 % | 68.3154 % | 68.3154 % |
| Health-related Institutions Patient Income | 0.0000 % | 0.0000 % | 0.0000 % | 0.0000 % | 0.0000 % |
| Proportional Contribution | | | | | |
| Other Educational and General Proportional Contribution (Other E&G percentage x Total Employer Contribution to Retirement Programs) | 425,183 | 435,875 | 449,635 | 456,444 | 467,706 |
| HRI Patient Income Proportional Contribution (HRI Patient Income percentage x Total Employer Contribution To Retirement Programs) | 0 | 0 | 0 | 0 | 0 |
| Differential | | | | | |
| Differential Percentage | 1.9000 % | 1.9000 % | 1.9000 % | 1.9000 % | 1.9000 % |
| Gross Payroll Subject to Differential - Optional Retirement Program | 429,507 | 321,862 | 322,183 | 322,183 | 322,183 |
| Total Differential | 8,161 | 6,115 | 6,121 | 6,121 | 6,121 |

Schedule 7: Personnel

87th Regular Session, Agency Submission, Version 1
Automated Budget and Evaluation System of Texas (ABEST)

Date: 9/15/2020

Time: 10:59:11AM

Agency code: **557** Agency name: **Texs A&M Vet Med Diagn Lab**

| | Actual | Actual | Budgeted | Estimated | Estimated |
|---|--------------|--------------|--------------|--------------|--------------|
| Part A. | | | | | |
| FTE Postions | | | | | |
| Directly Appropriated Funds (Bill Pattern) | | | | | |
| Educational and General Funds Non-Faculty Employees | 158.7 | 161.0 | 161.0 | 161.0 | 161.0 |
| Subtotal, Directly Appropriated Funds | 158.7 | 161.0 | 161.0 | 161.0 | 161.0 |
| GRAND TOTAL | 158.7 | 161.0 | 161.0 | 161.0 | 161.0 |