

# 2020 2021 BUDGET

FISCAL YEAR

2020/2021

SERVING HIDALGO COUNTY & STARR COUNTY, TEXAS



# **South Texas College Budget**

**Fiscal Year 2020-2021**



**SOUTH TEXAS  
COLLEGE**

**Hidalgo County and Starr County, Texas**

**South Texas College**  
**Budget**  
**For The Fiscal Year Ending August 31, 2021**

**TABLE OF CONTENTS**

**INTRODUCTORY SECTION**

Board of Trustees and President .....	1-3
Comprehensive Mission: Vision, Purpose, and Core Values .....	4
Fact Sheet 2020-2021 .....	5
Meta-Majors Program Clusters 2020-2021 .....	6
Summary of Fall Semester Headcount, Unduplicated Annual Headcount and Annual Full Time Equivalent (FTE) .....	7

**ALL FUNDS SUMMARY**

Summary of Revenues and Transfers and Expenditures, Transfers and Reserves by Fund - Current and Plant Funds .....	9
---	---

**UNRESTRICTED FUND REVENUES**

Revenues by Source - Pie Chart .....	12
Revenues by Source - Comparison of Previous Fiscal Year with Fiscal Year Ending August 31, 2021 - Pie Chart .....	13
Summary of Revenues - Budget and Actual - Comparison of Previous Fiscal Years with Fiscal Year Ending August 31, 2021 .....	14
Detail of Revenues by Source - Comparison of Previous Fiscal Years with Fiscal Year Ending August 31, 2021 .....	15-17

**UNRESTRICTED FUND EXPENDITURES**

Expenditures by Function (Without Transfers and Reserves) - Pie Chart .....	20
Expenditures by Function - Comparison of Previous Fiscal Year with Fiscal Year Ending August 31, 2021 - Pie Chart .....	21
Expenditures by Classification (Without Transfers and Reserves) - Pie Chart .....	22
Expenditures by Classification - Comparison of Previous Fiscal Year with Fiscal Year Ending August 31, 2021 - Pie Chart .....	23
Summary of Expenditures by Function and Classification .....	24-25
Summary of Expenditures by Function - Budget and Actual - Comparison of Previous Fiscal Years with Fiscal Year Ending August 31, 2021 .....	26
Summary of Expenditures by Classification - Budget and Actual - Comparison of Previous Fiscal Years with Fiscal Year Ending August 31, 2021 .....	27

**South Texas College**  
**Budget**  
**For The Fiscal Year Ending August 31, 2021**

**TABLE OF CONTENTS** *(Continued)*

**UNRESTRICTED FUND EXPENDITURES BY FUNCTION, CLASSIFICATION AND ORGANIZATION**

Detail of Expenditures by Function, Classification and Organization.....	29-54
--	-------

**UNRESTRICTED FUND CAPITAL EXPENDITURES**

Summary of Capital Expenditures by Function and Organization .....	55
Detail of Capital Expenditures by Function and Organization .....	56-57

**AUXILIARY FUND**

Detail of Revenues by Source - Comparison of Previous Fiscal Years with Fiscal Year Ending August 31, 2021 .....	59
Detail of Expenditures by Classification and Organization.....	60-61

**RESTRICTED FUND**

Detail of Revenues by Source - Comparison of Previous Fiscal Years with Fiscal Year Ending August 31, 2021 .....	63-70
Detail of Expenditures by Classification and Fund.....	72-83

**ENDOWMENT FUND**

Summary of Revenues, Expenditures and Transfers – Budget and Actual - Comparison of Previous Fiscal Years with Fiscal Year Ending August 31, 2021.....	85
---	----

**PLANT FUND - UNEXPENDED**

Unexpended - Construction Fund - Summary of Revenues, Expenditures and Transfers - Budget and Actual.....	87
Unexpended - Construction Fund - Detail of Projected Expenditures for Approved Construction Projects .....	88-91



**South Texas College**  
**Budget**  
**For The Fiscal Year Ending August 31, 2021**

**TABLE OF CONTENTS** *(Continued)*

**PLANT FUND - RENEWALS AND REPLACEMENTS**

Renewals and Replacements Fund - Summary of Revenues, Expenditures and Transfers - Budget and Actual.....	93
Renewals & Replacements Fund - Detail of Projected Expenditures for Approved Renewals & Replacements Projects.....	94-95

**PLANT FUND - RETIREMENT OF INDEBTEDNESS**

Retirement of Indebtedness Fund - Summary of Revenues, Expenditures and Transfers - Budget and Actual.....	97
---	----

**SECTION 140.0045 EXPENDITURES**

Summary of Local Government Code Section 140.0045 Expenditures .....	99
--	----

**RESOLUTION**

Resolution Adopting the Budget of South Texas College for the Fiscal Year 2020-2021 .....	101-102
---	---------

# **Introductory Section**

**South Texas College**  
**Budget**  
**For the Fiscal Year Ending August 31, 2021**

**Board of Trustees and President**

---

**PAUL R. RODRIGUEZ**  
**CHAIRMAN**



CEO of Valley Land Title Co.  
District 3  
Representing South McAllen, Southwest Pharr, Hidalgo, Sharyland, Southeast Mission, and Granjeno  
First Term: August 2012 – May 2016  
Second Term: May 2016 – May 2022  
Serves as Chairman of the Board, member of the Finance, Audit, & Human Resources Committee, and member of the Facilities Committee.  
Formerly served as Secretary of the Board, Chair and member of the Finance, Audit, & Human Resources Committee, and member of the Facilities Committee.

**ROSE BENAVIDEZ**  
**VICE CHAIR**



President of Starr County Industrial Foundation  
District 1  
Representing Starr County  
First Term: Nov. 2009 – May 2012  
Second Term: May 2012 – May 2018  
Third Term: May 2018 – May 2024  
Serves as Vice Chair of Board, member of the Finance, Audit, & Human Resources Committee, and member of the Facilities Committee.  
Formerly served as Chair and Vice Chair of the Board, member of the Facilities Committee, and member of the Finance, Audit, & Human Resources Committee.

**ROY DE LEÓN**  
**SECRETARY**



Branch Retail Executive of BBVA Compass Bank – Mercedes  
District 7  
Representing Northeast Hidalgo County, North Weslaco, Edcouch, Elsa, La Villa, Mercedes, Monte Alto, Northeast Alamo, Northeast Edinburg, and Hargill  
(Appointed 1997 - 1998)  
First Term: May 1998 – May 2002  
Second Term: May 2002 – May 2008  
Third Term: May 2008 – May 2014  
Fourth Term: May 2014 – May 2020  
Serves as Secretary of the Board and Chair of the Finance, Audit, & Human Resources Committee.  
Formerly served as Chair, Vice Chair, and Secretary of the Board, Chair and member of the Finance, Audit, & Human Resources Committee, and member of the Facilities Committee.

**South Texas College**  
**Budget**  
**For the Fiscal Year Ending August 31, 2021**

**Board of Trustees and President**

---

**VICTORIA CANTU**  
MEMBER



CEO of Children's Education Station, LLC  
District 2  
Representing La Joya, Western Mission, Palmview, Sullivan City, Penitas, and Western Alton  
First Term: May 2018 – May 2024  
Serves as member of the Education and Workforce Development Committee.

**GARY GURWITZ**  
MEMBER



Managing Partner, Atlas, Hall & Rodriguez, L.L.P., McAllen  
District 4  
Representing North McAllen, Northwest Pharr, Palmhurst, Northeast Mission, and Southwest Edinburg  
(Appointed 1993 - 1998)  
Second Term: May 1998 – May 2004  
Third Term: May 2004 – May 2010  
Fourth Term: May 2010 – May 2016  
Fifth Term: May 2016 – May 2022  
Serves as Chair of the Facilities Committee and member of the Education and Workforce Development Committee.  
Formerly served as Chair, Vice Chair, and Secretary of the Board, Chair and member of the Facilities Committee, member of the Finance, Audit, & Human Resources Committee, and member of the Education and Workforce Development Committee.

**DR. ALEJO SALINAS, JR.**  
MEMBER



Retired Superintendent/Superintendent Emeritus, Hidalgo ISD  
District 5  
Representing Northwest Hidalgo County, Edinburg, North San Juan, and Northeast Pharr  
First Term: May 1996 – May 2002  
Second Term: May 2002 – May 2008  
Third Term: May 2008 – May 2014  
Fourth Term: May 2014 – May 2020  
Serves as Chair of the Education and Workforce Development Committee and member of the Facilities Committee.  
Formerly served as Chair and Vice Chair of the Board, Chair and member of the Facilities Committee, Chair and member of the Education and Workforce Development Committee, and member of the Finance, Audit, & Human Resources Committee.

**South Texas College**  
**Budget**  
**For the Fiscal Year Ending August 31, 2021**

**Board of Trustees and President**

---

**RENE GUAJARDO**  
**MEMBER**



Human Resources Director, Mercedes ISD  
District 6  
Representing Donna, South Alamo, South San Juan, Southeast Pharr, South  
Weslaco, and Progreso  
First Term: May 2018 – May 2024  
Serves as member of the Finance, Audit, & Human Resources Committee.  
Formerly served as member of the Education and Workforce Development  
Committee.

**DR. SHIRLEY A. REED**  
**PRESIDENT**



Founding College President: June 1994 - Present





# Vision, Mission, and Core Values

## Comprehensive Mission for South Texas College

### VISION STATEMENT

South Texas College will be a global model in educational innovation serving as a catalyst to drive regional prosperity, economic development, and the social mobility of those we serve.

### MISSION STATEMENT

South Texas College is a public institution of higher education that provides educational opportunities through excellence in teaching and learning, workforce development, cultural enrichment, community service, and regional and global collaborations.

### CORE VALUES

**Student Success:** We are committed to the personal, academic and career goals of each student.

**Excellence:** We are committed to excellence and innovation in teaching, learning, and services.

**Opportunity:** We are committed to providing access and support for students to achieve their academic and career goals.

**Community:** We are committed to equitable results through inclusion, diversity, collaboration, and engagement.

**Integrity:** We are committed to being respectful, professional, honest, accountable, and transparent.







# FACT SHEET



## ABOUT

Founded in 1993, South Texas College is accredited by the Commission on Colleges of the Southern Association of Colleges and Schools to award baccalaureate and associate degrees. Over 32,000 credit and over 13,000 non-credit students attend STC, and a faculty and staff of more than 2,600 serve STC's five state of the art campuses, two Higher Education Centers and one virtual campus.

## CREATION

South Texas College was created on September 1, 1993, by Texas Senate Bill 251 to serve Hidalgo and Starr counties. A confirmation election, held on August 12, 1995, established a taxing district for the college. Seven districts, based on population, were also approved for single-member representation on the Board of Trustees. A community leader from each of the seven districts was originally appointed by Governor Ann Richards to serve on the founding Board of Trustees. Since then, an election process has been established, and all board members are elected for six year terms.

## DUAL CREDIT

South Texas College is a model of collaboration with public schools and has one of the largest dual enrollment programs in the state of Texas. A variety of dual enrollment programs have been instituted, including six academies, drop-out recovery programs and other unique initiatives with 23 school districts, and 70 high school partners throughout Hidalgo and Starr counties. The programs allow eligible students to take college courses while attending high school. Combined, over 15,000 students are currently enrolled in these programs. Since 2000, South Texas College has provided tuition-free dual enrollment to over 106,000 students; saving families over \$200 million. In addition, South Texas College leads the nation in the number of Early College High School partnerships developed with area Independent School Districts. This includes 29 Early College High Schools and two Career and Technical Early College High Schools.

## CONTINUING, PROFESSIONAL & WORKFORCE EDUCATION

The program provides opportunities for lifelong learners who want to upgrade their skills, change careers, renew licenses and certifications, or seek personal enrichment. There is a wide variety of course offerings including online classes. Additionally the division also offers customized training to area businesses, industries and the community. Training programs are tailored to a client's specific needs in terms of content, schedule and location.

## ARTICULATION AGREEMENTS

For those students who wish to continue their education beyond an associate's degree, STC has more than 80 articulation agreements in place with colleges across the country.

## ACCREDITATION

South Texas College is accredited by the Southern Association of Colleges and Schools Commission on Colleges to award the Baccalaureate and Associate degrees. Contact the Commission on Colleges at 1866 Southern Lane, Decatur, Georgia 30033-4097 or call 404-679-4500 for questions about the accreditation of South Texas College.

South Texas College's offerings are approved by the Texas Higher Education Coordinating Board and the Texas Education Agency.

## ASSOCIATE DEGREES AND CERTIFICATES

South Texas College offers 121 degree and Certificate program options, including Associate's degrees in a variety of art, science, technology and allied health fields of study. The college also offers 32 online associate degrees and certificates options through South Texas College Online.

## BACCALAUREATE DEGREES

South Texas College is proud to be one of four community colleges in the State of Texas accredited to offer baccalaureate degrees in Applied Technology and Applied Science. South Texas College offers Bachelor of Applied Technology degrees in Technology Management, Computer and Information Technologies, and Medical and Health Services Management. A Bachelor of Applied Science in Organizational Leadership is also offered. Additionally, South Texas College was granted legislative authority during the 85th Legislative Session to offer the Bachelor of Science in Nursing.

## SOUTH TEXAS COLLEGE ONLINE

Through South Texas College Online, students not only have access to more than 241 unique online courses, full online library services, registration, advising, counseling, payment services, financial aid, bookstore and testing, and so much more. Currently 19 associate degrees, 9 certificates and all four bachelor programs are available online, making it possible for students to earn their degrees without ever setting foot on campus.

## INDUSTRY TRAINING & ECONOMIC DEVELOPMENT

South Texas College is the fiscal agent and home of the executive offices for the North American Advanced Manufacturing Research and Education Initiative (NAAMREI). In addition, the Institute for Advanced Manufacturing (IAM) is linked to all community and technical colleges in the region. South Texas College has taken the lead in helping train workers to fuel a regional manufacturing economy and to support innovations in rapid response manufacturing.

## ADA COMPLIANCE

In accordance with the Americans with Disabilities Act of 1990, Title IX of the Education Amendment of 1972, and Section 504 of the Vocational Rehabilitation Act of 1973, South Texas College provides accommodations as required by law to afford equal educational opportunities to all people. For questions about the accreditation of South Texas College, contact the Commission on Colleges at (404) 679-4500.

## LOCATIONS

- Pecan Campus**  
McAllen, TX
- Mid-Valley Campus**  
Weslaco, TX
- Starr County Campus**  
Rio Grande City, TX
- Technology Campus**  
McAllen, TX
- Dr. Ramiro R. Casso  
Nursing & Allied Health  
Campus**  
McAllen, TX
- STC Center  
for Public Safety Excellence**  
Pharr, TX
- Higher Education Center: La Joya**  
La Joya, TX
- Higher Education Center: Pharr**  
Pharr, TX

## PRESIDENT

**Shirley A. Reed**  
M.B.A., Ed.D

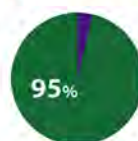
## BOARD OF TRUSTEES

- Paul R. Rodriguez**  
*Chairman*
- Rose Benavidez**  
*Vice Chair*
- Roy de León**  
*Secretary*
- Victoria Cantú**  
*Member*
- Rene Guajardo**  
*Member*
- Gary Gurwitz**  
*Member*
- Dr. Alejo Salinas, Jr.**  
*Member*

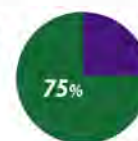
## VITAL STATISTICS



More than 70% of student population are the first in their families to attend college



More than 95% of students are Hispanic



More than 75% take advantage of some form of financial aid (excluding dual enrollment students)

Class size averages  
26 students per  
faculty member



# SOUTHTEXASCOLLEGE.EDU

For the 2020-2021 academic year, STC offers 127 degree and certificate options. The awards available to its students include: three Bachelor of Applied Technology (B.A.T.), one Bachelor of Applied Science (B.A.S.), one Bachelor of Science in Nursing (B.S.N.), one Associate of Arts (A.A.) Degree in 22 fields of study, one Associate of Arts in Teaching (A.A.T.) in 3 fields of study, one Associate of Science (A.S.) Degree in 9 fields of study, 39 Associate of Applied Science (A.A.S) Degrees, and 49 Certificates of Completion.

## Business

- Administrative Office Assistant
- Business Administration (AA)
- Business Administration (AAS)
- Culinary Arts
- Human Resources Specialist

## Computer & Information Technology

- Computer and Advanced Technologies
- Computer Information Systems
- Computer Science
- Cybersecurity
- Information Technology

## Education & Kinesiology

- Child Development/Early Childhood
- Education EC-6 Generalist
- Education 4-8 Generalist
- Education 8-12
- Kinesiology

## Fine and Performing Arts

- Dance
- Drama
- Graphic Arts
- Music
- Visual Arts

## Health Sciences

- Diagnostic Medical Sonography
- Emergency Medical Technology
- Health Information Technology
- Medical Assistant Technology
- Nursing
- Occupational Therapy Assistant
- Patient Care Technician
- Pharmacy Technology
- Physical Therapist Assistant
- Radiological Technology
- Respiratory Therapy

## Humanities

- American Sign Language and Interpreting
- Communication
- English
- History
- Interdisciplinary Studies
- Mexican-American Studies
- Philosophy

## Math, Science, & Engineering

- Biology
- Chemistry
- Engineering
- Interdisciplinary Studies
- Mathematics
- Physics
- Pre-Pharmacy

## Public Safety

- Fire Science
- Law Enforcement
- Paralegal
- Public Administration

## Social and Behavioral Sciences

- Anthropology
- Criminal Justice
- Political Science
- Psychology
- Social Work
- Sociology

## Technology

- Architectural and Engineering Design Technology
- Automotive Technology
- Construction Supervision
- Diesel Technology
- Electrician Technology
- HVACR Technology
- Precision Manufacturing Technology
- Welding

**SouthTexasCollege.edu**

**1-855-GoToSTC**

## BACCALAUREATE DEGREES

- Bachelor of Applied Science in **Organizational Leadership**
- Bachelor of Applied Technology in **Computer and Information Technologies**
- Bachelor of Applied Technology in **Medical and Health Services Management**
- Bachelor of Applied Technology in **Technology Management**
- Bachelor of Science in **Nursing: RN to BSN**



# South Texas College

## Summary of Fall Semester Headcount, Unduplicated Annual Headcount and Annual Full Time Equivalent (FTE)

Academic Year	Fall Semester Headcount	Unduplicated Annual Headcount	Annual FTE
1993 - 94	1,055	2,719	1,318
1994 - 95	2,227	4,720	2,221
1995 - 96	3,254	6,893	3,087
1996 - 97	5,416	9,756	4,696
1997 - 98	6,849	11,861	5,737
1998 - 99	9,598	14,391	7,572
1999 - 00	10,364	15,214	7,901
2000 - 01	11,183	16,793	8,343
2001 - 02	12,443	18,357	9,275
2002 - 03	13,691	20,447	10,173
2003 - 04	15,228	21,927	10,529
2004 - 05	17,035	23,847	11,384
2005 - 06	16,233	23,594	11,147
2006 - 07	18,460	25,423	11,675
2007 - 08	19,808	27,940	12,805
2008 - 09	21,666	30,734	14,162
2009 - 10	26,368	36,169	17,918
2010 - 11	28,006	36,951	18,708
2011 - 12	29,513	38,900	18,747
2012 - 13	29,812	40,009	19,230
2013 - 14	30,233	40,458	19,509
2014 - 15	30,849	42,079	19,773
2015 - 16	33,994	45,665	21,422
2016 - 17	33,044	44,768	21,239
2017 - 18	31,374	43,251	21,394
2018 - 19	31,640	42,590	20,590
2019 - 20	32,478		
2020 - 21*	28,628		

\* Projected



# SOUTH TEXAS COLLEGE

This page intentionally left blank.

# **All Funds Summary**

**South Texas College**  
**Current & Plant Funds**  
**Summary of Revenues and Transfers and Expenditures,**  
**Transfers and Reserves by Fund**

**Budget for Fiscal Year 2020 - 2021**

<b>Fund</b>	<b>Revenues and Transfers*</b>	<b>Expenditures, Transfers and Reserves</b>
Unrestricted Fund	\$ 168,394,087	\$ 168,394,087
Auxiliary Fund	\$ 3,738,722	\$ 3,738,722
Restricted Fund	\$ 84,404,264	\$ 84,404,264
Endowment Fund	\$ 1,810	\$ 1,810
Plant Fund - Unexpended - Construction	\$ 10,982,474	\$ 10,982,474
Plant Fund - Renewals & Replacements	\$ 4,883,890	\$ 4,883,890
Plant Fund - Retirement of Indebtedness	\$ 13,800,601	\$ 13,800,601

\* Amounts may include Fund Balance (Carryover).



# SOUTH TEXAS COLLEGE

This page intentionally left blank.

# **Unrestricted Fund Revenues**



# SOUTH TEXAS COLLEGE

This page intentionally left blank.

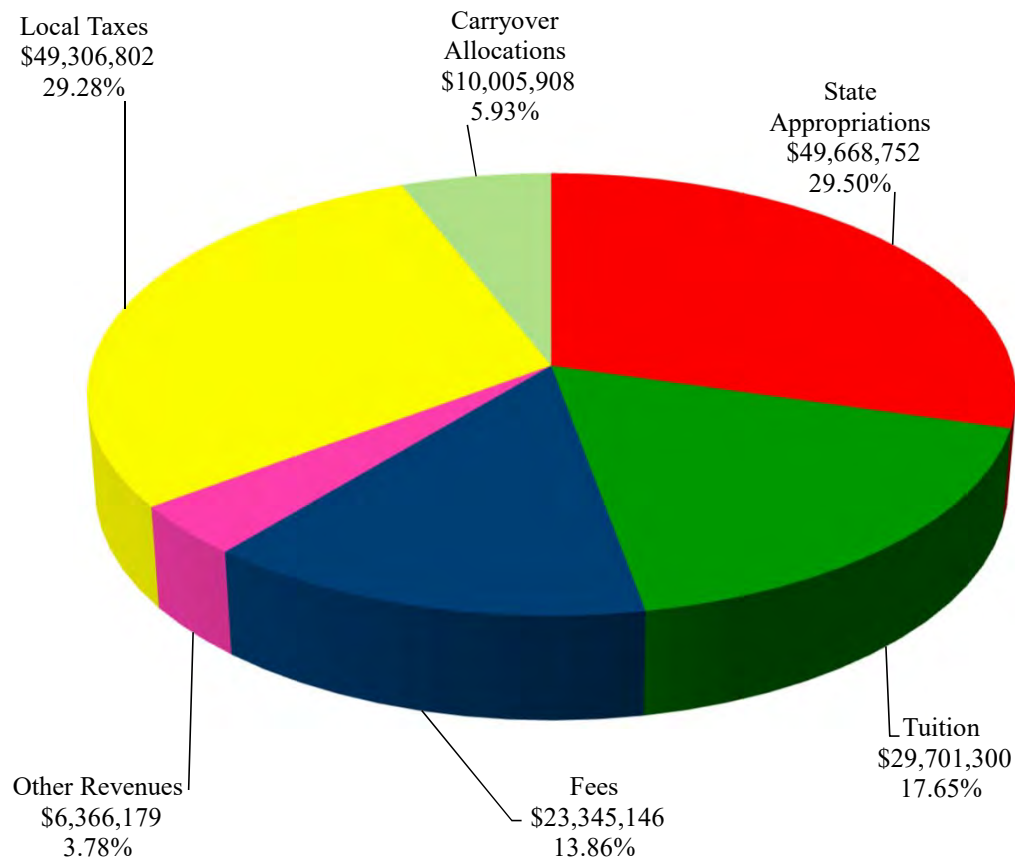
# South Texas College

## Unrestricted Fund

### Revenues by Source

**Budget for Fiscal Year 2020 - 2021**

Source of Revenues	FY '21 Budget	Percentage
State Appropriations	\$ 49,668,752	29.50%
Tuition	29,701,300	17.65%
Fees	23,345,146	13.86%
Other Revenues	6,366,179	3.78%
Local Taxes	49,306,802	29.28%
Carryover Allocations	10,005,908	5.93%
<b>Total Revenues</b>	<b>\$ 168,394,087</b>	<b>100.00%</b>

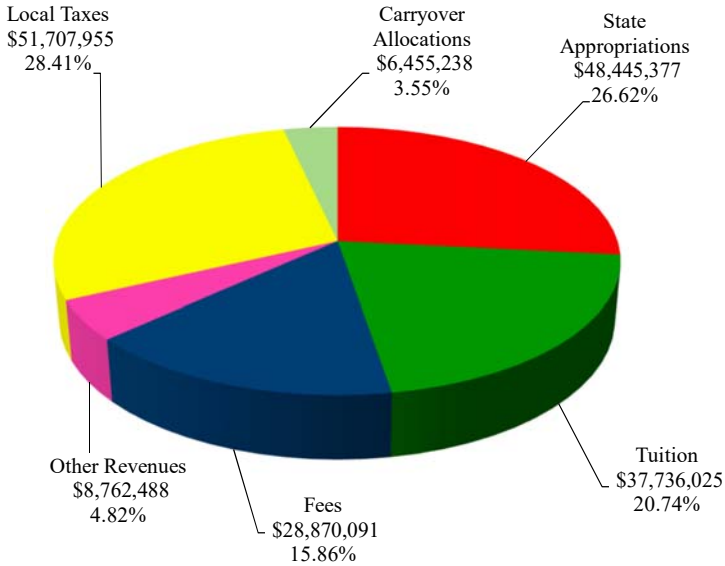




# South Texas College Unrestricted Fund Revenues by Source

## Comparison of Previous Fiscal Year with Fiscal Year Ending August 31, 2021

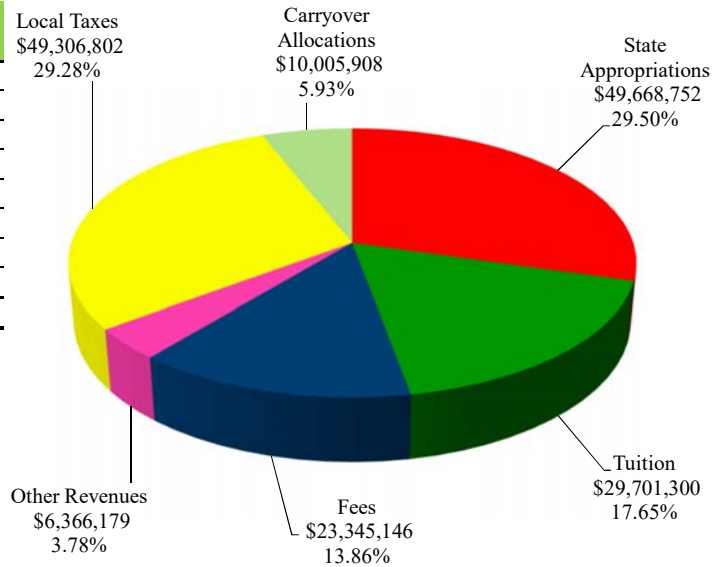
### Fiscal Year 2020



Source of Revenues	FY '20 Budget (As Amended)	Percentage
State Appropriations	\$ 48,445,377	26.62%
Tuition	37,736,025	20.74%
Fees	28,870,091	15.86%
Other Revenues	8,762,488	4.82%
Local Taxes	51,707,955	28.41%
Carryover Allocations	6,455,238	3.55%
<b>Total Revenues</b>	<b>\$ 181,977,174</b>	<b>100.00%</b>

### Fiscal Year 2021

Source of Revenues	FY '21 Budget	Percentage
State Appropriations	\$ 49,668,752	29.50%
Tuition	29,701,300	17.65%
Fees	23,345,146	13.86%
Other Revenues	6,366,179	3.78%
Local Taxes	49,306,802	29.28%
Carryover Allocations	10,005,908	5.93%
<b>Total Revenues</b>	<b>\$ 168,394,087</b>	<b>100.00%</b>



# South Texas College

## Unrestricted Fund

### Summary of Revenues - Budget and Actual

#### Comparison of Previous Fiscal Years with Fiscal Year Ending August 31, 2021

Revenue Source	FY '19 Budget (As Amended)	FY '19 Actual	FY '20 Budget (As Amended)	FY '20 Estimated*	FY '21 Budget
State Appropriations	\$ 48,551,086	\$ 48,580,692	\$ 48,445,377	\$ 48,511,811	\$ 49,668,752
Tuition	34,347,564	30,258,057	37,736,025	35,711,497	29,701,300
Fees	27,915,959	28,592,808	28,870,091	29,104,085	23,345,146
Other Revenues	7,870,236	11,168,151	8,762,488	11,147,258	6,366,179
Local Taxes	50,516,741	53,934,103	51,707,955	54,225,894	49,306,802
Carryover Allocations	17,609,914	17,609,914	6,455,238	6,455,238	10,005,908
<b>Total Unrestricted Fund Revenues</b>	<b>\$ 186,811,500</b>	<b>\$ 190,143,725</b>	<b>\$ 181,977,174</b>	<b>\$ 185,155,783</b>	<b>\$ 168,394,087</b>

\* Amounts are estimated. Actual amounts will be available after fiscal year end and completion of audit.

The Unrestricted Fund includes those economic resources of the college which are expendable for the purpose of performing the primary missions of the institution-instruction, research, and public service - and which are not restricted by external sources or designated by the governing board of other than operating expenditures.

**Note:**

State Appropriations Revenues include state on-behalf benefits which are budgeted in the Unrestricted Fund and are subsequently transferred to the Restricted Fund along with related expenditures for Annual Financial Report purposes.

# South Texas College

## Unrestricted Fund

### Detail of Revenues by Source

#### Comparison of Previous Fiscal Years with Fiscal Year Ending August 31, 2021

Revenue Source	FY '19 Budget (As Amended)	FY '20 Budget (As Amended)	FY '21 Budget
<i>State Contact Hour Appropriation</i>	\$ 40,226,013	\$ 42,172,061	\$ 37,954,853
<i>Other State Appropriations</i>			
Optional Retirement Program (ORP)	556,134	575,785	524,004
Teacher Retirement System (TRS)	2,287,161	2,367,977	2,155,023
Higher Education Employees Group Insurance (HEGI)	5,481,778	3,329,554	6,159,713
Higher Education Employees Group Insurance (HEGI) - Year 1	-	-	2,830,159
Hazlewood Reimbursement	-	-	45,000
<b>Total Other State Appropriations</b>	<b>8,325,073</b>	<b>6,273,316</b>	<b>11,713,899</b>
<b>Total State Appropriations</b>	<b>48,551,086</b>	<b>48,445,377</b>	<b>49,668,752</b>
<i>Tuition</i>			
Academic	29,678,340	31,491,699	24,329,922
Differential			
3000/4000 Level Courses	187,501	216,000	185,130
Associate Degree Nursing	489,500	682,500	678,975
Occupational Therapy Assistant	39,150	42,900	28,160
Physical Therapist Assistant	35,100	48,125	34,925
Radiologic Technology/Sonography	49,501	76,375	71,956
Vocational Nursing	280,501	360,001	383,624
Respiratory Therapy	45,000	55,250	59,540
Pharmacy Tech	39,375	39,875	24,365
Emergency Medical Technology	76,500	115,499	114,070
Patient Care Assistant	45,001	68,250	53,760
Biology	538,499	538,501	365,249
Chemistry	85,500	118,000	71,640
Physics	14,001	29,999	18,220
Astronomy	13,850	12,749	9,910
Architectural and Engineering Design Technology	55,560	81,000	64,410
Automotive and Diesel Technology	63,120	137,999	116,600
Culinary Arts	48,255	28,500	34,275
Electronic Equipment and Computer	75,990	33,000	24,975
Electrician Assistant	22,950	34,000	32,719
Fire Science	6,380	2,124	3,830
Heating, Ventilation and Air Conditioning	33,400	58,000	43,360
Geology	37,380	53,999	56,120
Physical Science	73,680	72,001	50,740
Engineering	15,975	19,000	15,420
Legal Assisting	-	7,970	3,610
Manufacturing Technology	-	49,710	11,250
Child Care and Development	-	82,160	55,900
Law Enforcement	-	-	16,080
Welding	-	-	82,425
Drama	-	14,110	18,061
Bachelor of Applied Science in Organizational Leadership	804,000	2,057,000	1,286,740
Continuing, Professional, and Workforce Education (CPWE)	1,906,966	1,955,787	1,954,780

# South Texas College

## Unrestricted Fund

### Detail of Revenues by Source

#### Comparison of Previous Fiscal Years with Fiscal Year Ending August 31, 2021

Revenue Source	FY '19 Budget (As Amended)	FY '20 Budget (As Amended)	FY '21 Budget
<i>(Tuition Continued)</i>			
Alternative Teacher Certification	110,953	113,789	-
CPWE - New Contracts	176,708	179,792	179,791
Industry Training and Economic Development (ITED)	1,260,622	1,010,323	920,831
Recovery of Cost - ITED	4,000	47,000	47,000
Recovery of Cost - CPWE	91,590	93,872	93,828
Less: Texas Public Education Grants	(2,057,284)	(2,290,834)	(1,840,891)
<b>Total Tuition</b>	<b>34,347,564</b>	<b>37,736,025</b>	<b>29,701,300</b>
<i>Fees</i>			
Registration Fee	4,863,500	7,031,700	5,365,293
Additional Registration Fee	814,320	-	-
Information Technology Fee	12,541,050	12,109,242	9,860,249
Learning Support Fee	5,016,420	4,843,697	4,453,016
Lab Fee	870,600	854,808	636,182
Electronic Distance Learning/VCT Course Fee	944,160	995,040	562,219
Physical Education Special Activity Fee	43,175	41,470	31,405
Add/Drop Fee	147,400	147,325	129,575
Withdrawal After Census Day Fee	59,250	64,150	41,100
Audit Fee	264	264	264
Credit by Examination Fee	2,904	5,544	3,960
Installment Plan Fee	340,515	333,375	256,480
Installment Late Payment Fee	217,420	243,320	173,005
Emergency Loan Late Payment Fee	50,085	53,690	40,355
Reinstatement Fee	60,000	78,400	61,200
Student ID Replacement Fee	8,310	7,770	6,735
Lost Library Book Fee	8,370	6,720	2,160
Returned Check Fee	2,400	2,250	1,200
Developmental Studies Fee	373,333	264,567	178,205
Dual Enrollment Late Processing Fee	27,200	11,200	-
Parking Fines	67,290	76,500	39,150
TSI Assessment Reservation and Preparation Fee	41,138	36,146	23,536
TSI Assessment Exam	43,303	38,048	35,429
Parking Permit Fee	303,020	351,477	270,427
Third or More Attempts Fee	833,140	962,907	892,401
Fire Academy Fee	17,642	21,426	25,440
Enrollment in Developmental Studies Courses (>18 credit hours)	175,750	212,500	88,175
Higher Education Services Inc. (HESI) Exam Fee	44,000	76,555	59,970
TCOLE Licensing Examination	-	-	3,465
American Welding Society Certification Testing	-	-	4,000
Police Academy Fees	-	-	28,050
Welding and Other Course Fees Certification	-	-	72,500
<b>Total Fees</b>	<b>27,915,959</b>	<b>28,870,091</b>	<b>23,345,146</b>

# South Texas College

## Unrestricted Fund

### Detail of Revenues by Source

#### Comparison of Previous Fiscal Years with Fiscal Year Ending August 31, 2021

Revenue Source	FY '19 Budget (As Amended)	FY '20 Budget (As Amended)	FY '21 Budget
<b><i>Other Revenues</i></b>			
Conferences - CPWE	64,742	64,742	64,742
Concurrent Enrollment Reimbursement Cost	4,498,863	4,454,217	4,008,795
Dual Credit Academy Participation Fee	425,000	454,250	408,825
Interest	2,225,000	2,750,000	1,200,000
Book Royalties - Developmental English	200	-	-
Administrative Cost - Veterans	4,500	6,000	4,000
Administrative Cost - Pell	80,000	72,000	75,000
Administrative Cost - Federal Work Study (FWS)	70,000	75,000	60,000
Administrative Cost - CPWE	107,619	110,299	110,247
Administrative Cost - Carl Perkins	84,200	91,145	-
Shuttle System Contribution	299,812	676,315	429,470
Testing Commission	9,800	7,820	4,200
HiSET Commission	500	700	900
<b>Total Other Revenues</b>	<b>7,870,236</b>	<b>8,762,488</b>	<b>6,366,179</b>
<b><i>Local Taxes</i></b>			
Tax Collections	46,933,806	48,023,059	45,793,021
Delinquent Tax	2,169,142	2,260,745	2,155,763
Penalties, Interest	1,413,793	1,424,151	1,358,018
<b>Total Local Taxes</b>	<b>50,516,741</b>	<b>51,707,955</b>	<b>49,306,802</b>
<b><i>Carryover Allocations</i></b>			
Contingency Fund	2,000,000	1,813,783	2,000,000
Book Royalties - Developmental Studies	10,882	5,455	4,813
Unexpended Construction Plant Fund	5,000,000	3,000,000	2,000,000
Renewals & Replacements Plant Fund	1,000,000	-	-
Continuing, Professional, and Workforce Education	600,000	450,000	450,000
Capital Purchases	1,793,628	-	723,088
Prior Year M&O Tax Bond Program 2013-Supplies and Equipment	7,205,404	1,186,000	-
Waived Fee Allocation	-	-	328,007
Filled Positions	-	-	2,000,000
In Person-Hybrid Class Faculty Pay	-	-	1,500,000
Lecturer Positions	-	-	1,000,000
<b>Total Carryover Allocations</b>	<b>17,609,914</b>	<b>6,455,238</b>	<b>10,005,908</b>
<b>Total Revenues</b>	<b>\$ 186,811,500</b>	<b>\$ 181,977,174</b>	<b>\$ 168,394,087</b>
<i>Increase From Prior Fiscal Year</i>	<i>(5,272,117)</i>	<i>(4,834,326)</i>	<i>(13,583,087)</i>



# SOUTH TEXAS COLLEGE

This page intentionally left blank.

# **Unrestricted Fund Expenditures**



# SOUTH TEXAS COLLEGE

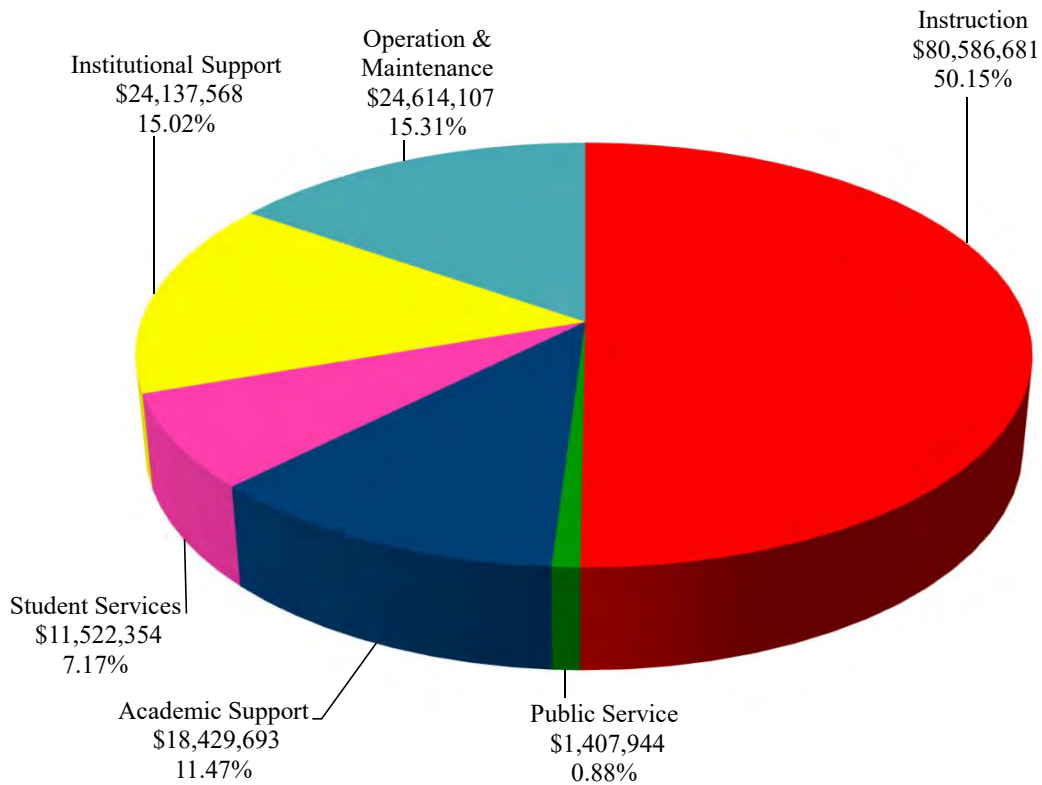
This page intentionally left blank.



**South Texas College**  
**Unrestricted Fund**  
**Expenditures by Function**  
**(Without Transfers and Reserves)**

**Budget for Fiscal Year 2020 - 2021**

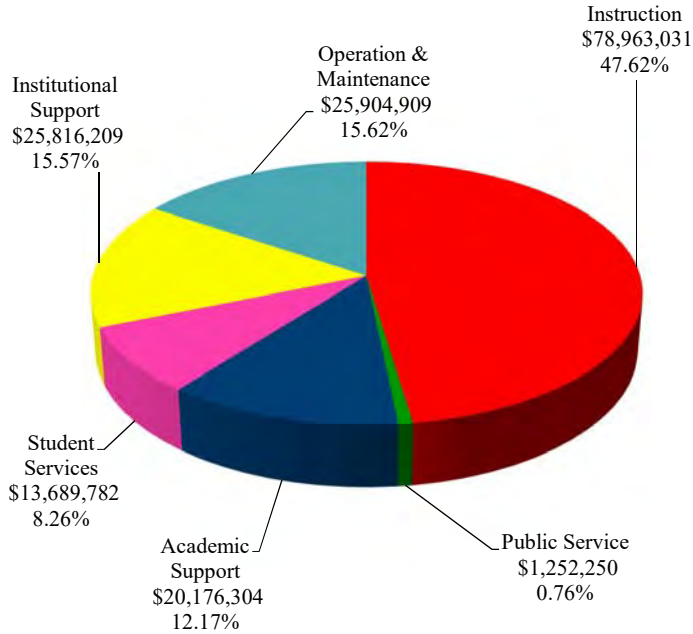
Function	FY '21 Budget	Percentage
Instruction	\$ 80,586,681	50.15%
Public Service	1,407,944	0.88%
Academic Support	18,429,693	11.47%
Student Services	11,522,354	7.17%
Institutional Support	24,137,568	15.02%
Operation & Maintenance	24,614,107	15.31%
<b>Total Expenditures</b>	<b>\$ 160,698,347</b>	<b>100.00%</b>



# South Texas College Unrestricted Fund Expenditures by Function (Without Transfers and Reserves)

## Comparison of Previous Fiscal Year with Fiscal Year Ending August 31, 2021

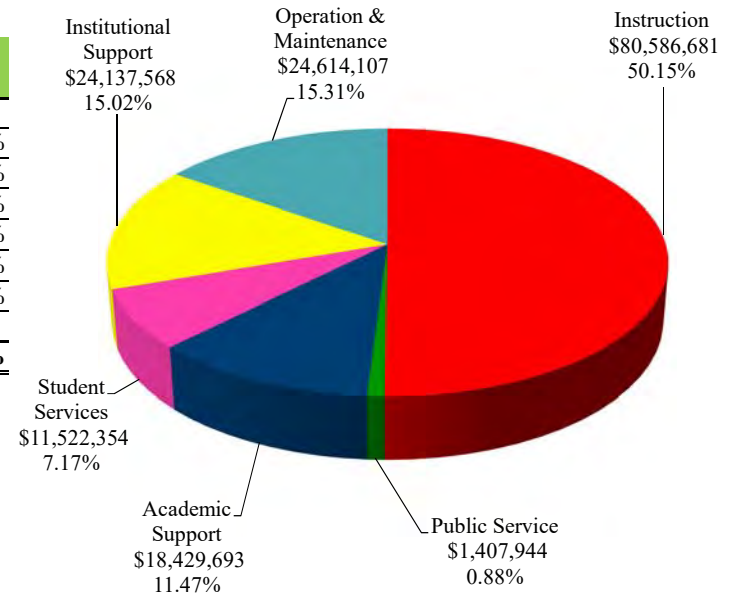
**Fiscal Year 2020**



Function	FY '20 Budget (As Amended)	Percentage
Instruction	\$ 78,963,031	47.62%
Public Service	1,252,250	0.76%
Academic Support	20,176,304	12.17%
Student Services	13,689,782	8.26%
Institutional Support	25,816,209	15.57%
Operation & Maintenance	25,904,909	15.62%
<b>Total Expenditures</b>	<b>\$ 165,802,485</b>	<b>100.00%</b>

**Fiscal Year 2021**

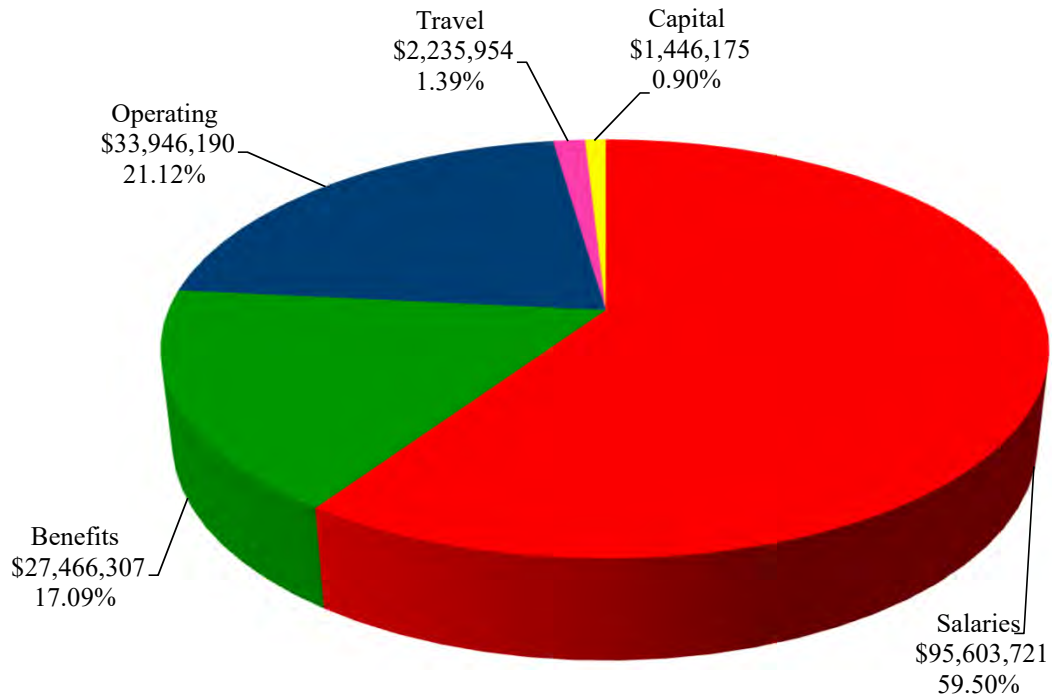
Function	FY '21 Budget	Percentage
Instruction	\$ 80,586,681	50.15%
Public Service	1,407,944	0.88%
Academic Support	18,429,693	11.47%
Student Services	11,522,354	7.17%
Institutional Support	24,137,568	15.02%
Operation & Maintenance	24,614,107	15.31%
<b>Total Expenditures</b>	<b>\$ 160,698,347</b>	<b>100.00%</b>



**South Texas College**  
**Unrestricted Fund**  
**Expenditures by Classification**  
**(Without Transfers and Reserves)**

**Budget for Fiscal Year 2020 - 2021**

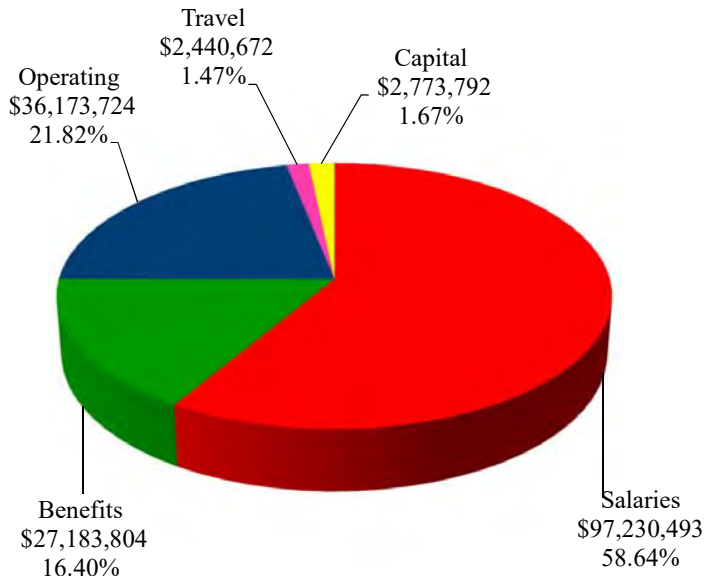
Classification	FY '21 Budget	Percentage
Salaries	\$ 95,603,721	59.50%
Benefits	27,466,307	17.09%
Operating	33,946,190	21.12%
Travel	2,235,954	1.39%
Capital	1,446,175	0.90%
<b>Total Expenditures</b>	<b>\$ 160,698,347</b>	<b>100.00%</b>



# South Texas College Unrestricted Fund Expenditures by Classification (Without Transfers and Reserves)

## Comparison of Previous Fiscal Year with Fiscal Year Ending August 31, 2021

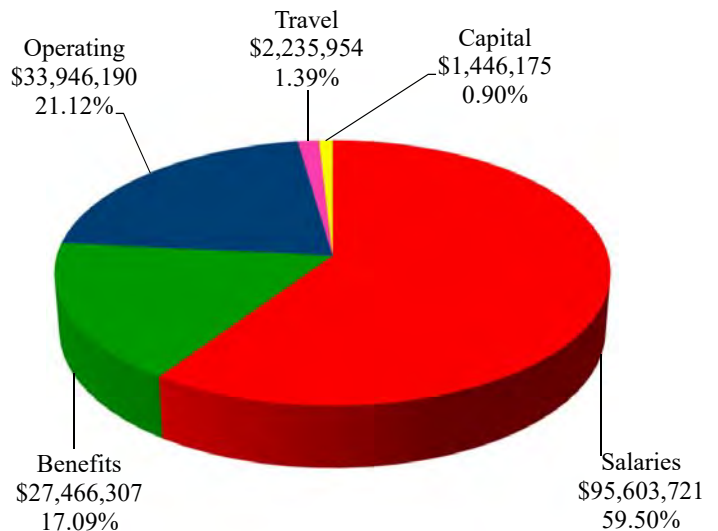
### Fiscal Year 2020



Classification	FY '20 Budget (As Amended)	Percentage
Salaries	\$ 97,230,493	58.64%
Benefits	27,183,804	16.40%
Operating	36,173,724	21.82%
Travel	2,440,672	1.47%
Capital	2,773,792	1.67%
<b>Total Expenditures</b>	<b>\$ 165,802,485</b>	<b>100.00%</b>

### Fiscal Year 2021

Classification	FY '21 Budget	Percentage
Salaries	\$ 95,603,721	59.50%
Benefits	27,466,307	17.09%
Operating	33,946,190	21.12%
Travel	2,235,954	1.39%
Capital	1,446,175	0.90%
<b>Total Expenditures</b>	<b>\$ 160,698,347</b>	<b>100.00%</b>



**South Texas College**  
**Unrestricted Fund**  
**Summary of Expenditures by Function and Classification**  
**Budget for Fiscal Year 2020 - 2021**

Function / Classification	Salaries	Percent of Total	Benefits	Percent of Total	Operating	Percent of Total
Instruction	\$ 54,775,766	57.29%	\$ 15,553,000	56.63%	\$ 8,445,170	24.88%
Public Service	593,194	0.62%	98,286	0.36%	489,994	1.44%
Academic Support	11,263,432	11.78%	3,121,126	11.36%	3,363,656	9.91%
Student Services	7,548,480	7.90%	2,272,002	8.27%	1,426,610	4.20%
Institutional Support	11,327,153	11.85%	3,383,360	12.32%	8,978,360	26.45%
Operation & Maintenance - Plant	10,095,696	10.56%	3,038,533	11.06%	11,242,400	33.12%
<b>Total - Without Transfers &amp; Reserves</b>	<b>95,603,721</b>	<b>100.00%</b>	<b>27,466,307</b>	<b>100.00%</b>	<b>33,946,190</b>	<b>100.00%</b>
<b>Percent of Total Expenditures Without Transfers &amp; Reserves</b>	59.50%		17.09%		21.12%	
<b>Transfers and Reserves</b>						
Transfer-Construction Fund	-		-		2,000,000	
Transfer-ITED	-		-		865,581	
Contingency	-		-		2,000,000	
HEGI Reserve	-		-		2,830,159	
<b>Total Transfers and Reserves</b>	<b>-</b>		<b>-</b>		<b>7,695,740</b>	
<b>Total Unrestricted Budget Expenditures/Transfers/Reserves</b>	<b>\$ 95,603,721</b>		<b>\$ 27,466,307</b>		<b>\$ 41,641,930</b>	
<b>Percent of Total Expenditures With Transfers and Reserves</b>	56.77%		16.31%		24.73%	

# South Texas College

## Unrestricted Fund

### Summary of Expenditures by Function and Classification

**Budget for Fiscal Year 2020 - 2021**

(Continued)

<b>Travel</b>	<b>Percent of Total</b>	<b>Capital</b>	<b>Percent of Total</b>	<b>Total</b>	<b>Percent of Total Budget W/O Trans/Reserv</b>	<b>Percent of Total Budget With Trans/Reserv</b>
\$ 1,149,324	51.40%	\$ 663,421	45.88%	\$ 80,586,681	50.15%	47.86%
32,601	1.46%	193,869	13.41%	1,407,944	0.88%	0.84%
398,741	17.83%	282,738	19.55%	18,429,693	11.47%	10.94%
238,616	10.67%	36,646	2.53%	11,522,354	7.17%	6.84%
291,777	13.05%	156,918	10.85%	24,137,568	15.02%	14.33%
124,895	5.59%	112,583	7.78%	24,614,107	15.31%	14.62%
<b>2,235,954</b>	<b>100.00%</b>	<b>1,446,175</b>	<b>100.00%</b>	<b>160,698,347</b>	<b>100.00%</b>	<b>95.43%</b>
1.39%		0.90%		100.00%		
-		-		2,000,000		
-		-		865,581		
-		-		2,000,000		
-		-		2,830,159		
-		-		<b>7,695,740</b>		<b>4.57%</b>
<b>\$ 2,235,954</b>		<b>\$ 1,446,175</b>		<b>\$ 168,394,087</b>		<b>100.00%</b>
1.33%		0.86%		100.00%		

**South Texas College**  
**Unrestricted Fund**  
**Summary of Expenditures by Function - Budget and Actual**

**Comparison of Previous Fiscal Years with Fiscal Year Ending August 31, 2021**

<b>Functions</b>	<b>FY '19 Budget (As Amended)</b>	<b>FY '19 Actual</b>	<b>FY '20 Budget (As Amended)</b>	<b>FY '20 Estimated*</b>	<b>FY '21 Budget</b>
Instruction	\$ 88,995,951	\$ 79,718,235	\$ 78,963,031	\$ 79,175,564	\$ 80,586,681
Public Service	1,204,381	658,629	1,252,250	405,145	1,407,944
Academic Support	21,132,823	18,633,628	20,176,304	17,293,972	18,429,693
Student Services	13,487,059	11,574,016	13,689,782	12,028,344	11,522,354
Institutional Support	25,029,436	27,888,010	25,816,209	29,833,108	24,137,568
Operation & Maintenance - Plant	27,381,665	22,225,156	25,904,909	21,729,093	24,614,107
<b>Total Expenditures by Function</b>	<b>177,231,315</b>	<b>160,697,674</b>	<b>165,802,485</b>	<b>160,465,226</b>	<b>160,698,347</b>
<b>Transfers and Reserves</b>					
Transfer-Unexpended Construction Fund	5,000,000	5,000,000	3,000,000	3,000,000	2,000,000
Transfer-Renewals & Replacement Fund	1,000,000	1,000,000	-	-	-
Transfer-MTR Bond Series 2007	395,200	395,200	-	-	-
Transfer-ITED	1,184,985	427,610	949,704	949,704	865,581
Contingency	2,000,000	-	2,000,000	-	2,000,000
Fund Balance Reserve	-	-	10,224,985	-	-
HEGI Reserve	-	-	-	-	2,830,159
<b>Total Transfers and Reserves</b>	<b>9,580,185</b>	<b>6,822,810</b>	<b>16,174,689</b>	<b>3,949,704</b>	<b>7,695,740</b>
<b>Total Unrestricted Expenditures by Function/Transfers/Reserves</b>	<b>\$ 186,811,500</b>	<b>\$ 167,520,484</b>	<b>\$ 181,977,174</b>	<b>\$ 164,414,930</b>	<b>\$ 168,394,087</b>

\* Amounts are estimated. Actual amounts will be available after fiscal year end and completion of audit.

**South Texas College**  
**Unrestricted Fund**  
**Summary of Expenditures by Classification - Budget and Actual**

**Comparison of Previous Fiscal Years with Fiscal Year Ending August 31, 2021**

<b>Classifications</b>	<b>FY '19 Budget (As Amended)</b>	<b>FY '19 Actual</b>	<b>FY '20 Budget (As Amended)</b>	<b>FY '20 Estimated*</b>	<b>FY '21 Budget</b>
Salaries	\$ 101,465,780	\$ 97,396,073	\$ 97,230,493	\$ 100,667,935	\$ 95,603,721
Benefits	29,074,300	28,877,722	27,183,804	29,427,309	27,466,307
Operating	42,518,769	28,634,619	36,173,724	26,741,917	33,946,190
Travel	2,378,838	1,805,785	2,440,672	1,407,691	2,235,954
Capital	1,793,628	3,983,475	2,773,792	2,220,374	1,446,175
<b>Total Expenditures by Classification</b>	<b>177,231,315</b>	<b>160,697,674</b>	<b>165,802,485</b>	<b>160,465,226</b>	<b>160,698,347</b>
<b>Transfers and Reserves</b>					
Transfer-Unexpended Construction Fund	5,000,000	5,000,000	3,000,000	3,000,000	2,000,000
Transfer-Renewals and Replacement Fund	1,000,000	1,000,000	-	-	-
Transfer-MTR Bond Series 2007	395,200	395,200	-	-	-
Transfer-ITED	1,184,985	427,610	949,704	949,704	865,581
Contingency	2,000,000	-	2,000,000	-	2,000,000
Fund Balance Reserve	-	-	10,224,985	-	-
HEGI Reserve	-	-	-	-	2,830,159
<b>Total Transfers and Reserves</b>	<b>9,580,185</b>	<b>6,822,810</b>	<b>16,174,689</b>	<b>3,949,704</b>	<b>7,695,740</b>
<b>Total Unrestricted Expenditures by Classifications/Transfers/Reserves</b>	<b>\$ 186,811,500</b>	<b>\$ 167,520,484</b>	<b>\$ 181,977,174</b>	<b>\$ 164,414,930</b>	<b>\$ 168,394,087</b>

\* Amounts are estimated. Actual amounts will be available after fiscal year end and completion of audit.





# SOUTH TEXAS COLLEGE

This page intentionally left blank.

# **Unrestricted Fund Exp.**

## **By Fun/Class/Orgn**

**South Texas College**  
**Unrestricted Fund**  
**Detail of Expenditures by Function, Classification and Organization**  
**Budget for Fiscal Year 2020 - 2021**

Organization	Salaries	Benefits	Operating	Travel	Capital	Total
100016 Unallocated Funds			347,539			347,539
100018 Instructional Initiative	20,000	6,000	15,000			41,000
210005 Equipment-New Faculty/Programs			25,436			25,436
210006 Academic Affairs Travel				47,268		47,268
210009 Academic Advancement Reserve			11,070	866		11,936
210010 Student Employees	32,250	2,903				35,153
210014 Phi Theta Kappa - Honors			3,023	4,471		7,494
210027 Learning Outcomes	148,927	44,678	5,549	6,420	90,000	295,574
210030 Academic Excellence Programs	167,858	50,358				218,216
211001 Distance Learning	883,177	256,402	64,204	21,096		1,224,879
211002 Distance Ed Instructional Tech			729,174			729,174
215001 Valley Scholars-Academic Affairs	20,048	1,804				21,852
221025 Business & Technology Travel				29,417		29,417
221099 Adj. Fac. Bus/Tech Pools	2,174,155	522,445				2,696,600
221101 Accounting	205,509	61,652	1,341	3,302		271,804

**South Texas College**  
**Unrestricted Fund**  
**Detail of Expenditures by Function, Classification and Organization**  
**Budget for Fiscal Year 2020 - 2021**

Organization	Salaries	Benefits	Operating	Travel	Capital	Total
221102 Economics	408,880	122,664	2,547	5,503		539,594
221103 Business Administration	681,399	204,421	13,915	6,604		906,339
221104 Information Technology Program	833,990	250,198	77,858	30,612		1,192,658
221105 Computer Science	760,654	228,198	125,106	24,764		1,138,722
221106 Culinary Arts	213,128	62,363	63,582	1,289		340,362
221107 Paralegal	67,631	20,289	4,586	4,586		97,092
221108 Office Administration	297,518	89,255	21,634	1,977		410,384
221110 Human Resources Specialist	60,700	18,210	6,814	5,149		90,873
221111 Construction Supervision	5,000	1,500	12,841	1,989		21,330
221116 Law Enforcement	139,220	41,766	28,172	4,586		213,744
221119 Cybersecurity	67,726	20,318	55,032	13,758		156,834
221201 Mathematics	2,504,069	751,223	79,350	30,537		3,365,179
221301 Biology	2,592,782	775,210	282,787	22,930	50,985	3,724,694
221302 Engineering	196,982	56,995	98,140	7,338		359,455
221303 Physics	967,789	288,131	163,720	13,299		1,432,939

**South Texas College**  
**Unrestricted Fund**  
**Detail of Expenditures by Function, Classification and Organization**  
**Budget for Fiscal Year 2020 - 2021**

Organization	Salaries	Benefits	Operating	Travel	Capital	Total
221304 Chemistry	741,393	220,212	191,420	13,671		1,166,696
221307 Agriculture			4,452	866		5,318
221308 Fire Science	111,132	33,340	34,573	2,077		181,122
221402 Automotive Technology	718,010	213,828	80,702	12,242	16,834	1,041,616
221404 Architel & Engnrng Dsgn Tech	444,620	133,387	83,374	16,143		677,524
221407 HVACR	377,187	113,156	60,192	5,871		556,406
221409 Advanced Manufacturing Technology	369,808	110,941	60,884	16,553		558,186
221410 Mechatronics			18,792	3,669		22,461
221413 Electrician Assistant	280,526	84,158	32,930	5,503		403,117
221415 Welding	361,152	108,345	125,768	5,587		600,852
221418 Diesel Technology	291,037	87,311	35,073	6,931		420,352
222002 College Success	270,864	81,260	10,744	9,304		372,172
222003 Developmental Reading			11,697	11,006		22,703
222005 Developmental Exit Test			91,720			91,720
222008 Developmental English			21,774	8,809		30,583

**South Texas College**  
**Unrestricted Fund**  
**Detail of Expenditures by Function, Classification and Organization**  
**Budget for Fiscal Year 2020 - 2021**

Organization	Salaries	Benefits	Operating	Travel	Capital	Total
222009 Book Royalties-Dev English			3,813	1,000		4,813
223001 Art	869,536	260,862	57,505	19,261		1,207,164
223002 Music	626,036	187,811	65,121	18,344		897,312
223003 Speech	522,451	156,737	6,573	10,024		695,785
223004 Drama	162,576	48,721	13,666	4,494		229,457
223005 Public Administration	60,290	18,087	6,879	2,752		88,008
223006 English	3,489,297	1,046,793	25,963	23,664		4,585,717
223007 Political Science	1,825,507	547,654	14,675	20,178		2,408,014
223008 World Language Department	587,696	176,309	15,807	11,648		791,460
223014 Wellness Center			11,006	917		11,923
223019 Philosophy	437,469	131,241	12,818	6,420		587,948
223020 History	1,413,919	424,178	12,735	17,338		1,868,170
223021 Child Development	328,038	98,412	15,047	5,503		447,000
223022 Education	486,317	145,896	7,464	9,534		649,211
223023 Criminal Justice	607,995	182,399	13,921	15,470		819,785

**South Texas College**  
**Unrestricted Fund**  
**Detail of Expenditures by Function, Classification and Organization**  
**Budget for Fiscal Year 2020 - 2021**

Organization	Salaries	Benefits	Operating	Travel	Capital	Total
223024 Sociology	502,367	150,710	11,215	13,745		678,037
223025 Psychological Science	1,081,887	324,567	18,622	9,875		1,434,951
223026 Social Work (SOCW)	125,571	37,671	4,889	2,752		170,883
223027 Kinesiology	464,236	138,510	18,187	8,508		629,441
223033 MV-Child Care & Development (Unres)	288,313	86,494				374,807
223036 Anthropology	58,103	17,431	4,745	1,629		81,908
223038 Sign Language AAS	120,321	36,097	4,586	4,073		165,077
223039 Travel - SS				41,168		41,168
223041 Dance	55,000	16,500	92	92		71,684
223099 Adj. Fac. SS Pools	1,228,919	244,590				1,473,509
223100 Adj. Fac. LA Pools	1,677,614	330,446				2,008,060
223139 Travel - LA				61,755		61,755
224002 Occupational Therapy	314,323	91,356	15,796	6,602		428,077
224003 Emergency Medical Technology	645,544	189,462	114,925	14,042		963,973
224004 Physical Therapy	376,847	110,114	19,078	7,338		513,377

**South Texas College**  
**Unrestricted Fund**  
**Detail of Expenditures by Function, Classification and Organization**  
**Budget for Fiscal Year 2020 - 2021**

Organization	Salaries	Benefits	Operating	Travel	Capital	Total
224005 Associate Degree Nursing	2,645,609	793,685	99,529	47,490		3,586,313
224006 Patient Care Assistant	554,963	166,489	24,988	8,255		754,695
224007 Medical Asst Technology	178,813	53,644	10,579	3,632		246,668
224008 Health Information	209,899	62,970	10,682	9,023		292,574
224009 Medical Information	70,510	21,153	10,484	3,979		106,126
224010 Pharmacy Technology	238,523	71,556	27,516	4,881		342,476
224011 Radiologic Technology	297,411	88,489	55,032	8,255		449,187
224018 Vocational Nursing	1,652,234	492,731	46,964	29,424		2,221,353
224025 Respiratory Therapy	280,858	81,318	41,146	4,293		407,615
224031 Diagnostic Sonograph	144,197	43,259	51,363	4,953		243,772
224033 NAH Travel				35,605		35,605
224043 i3 HEAL2 Contract			11,258	9,218		20,476
224044 Bachelor's of Nursing	178,152	53,445	33,661	10,364		275,622
224050 College Success Healthcare	255,717	76,715	8,392	6,420		347,244
224055 Clinical Simulation	193,994	58,200	96,978	25,498		374,670



**South Texas College**  
**Unrestricted Fund**  
**Detail of Expenditures by Function, Classification and Organization**  
**Budget for Fiscal Year 2020 - 2021**

Organization	Salaries	Benefits	Operating	Travel	Capital	Total
224099 Adj. Fac. NAH Pools	1,335,964	285,444				1,621,408
225007 BAT/BAS	66,813	20,044	40,375	22,052		149,284
225017 BAS Books & Resource			35,978			35,978
225018 BAS Organizational Leadership BASOL	177,442	53,233	11,006	4,586		246,267
225030 Computer Information Tech Prg -CITP	112,390	33,717	6,420	4,586		157,113
225033 Medical Health Srvc Mngmt - MHSM	108,118	32,436	9,172	4,586		154,312
225036 Technology Management Prg - TMGT	136,692	41,007	6,420	4,586		188,705
226001 Math & Science Travel				61,882		61,882
226099 Adj. Fac. Math/Science & BAT Pools	2,982,818	588,613				3,571,431
229099 Adj. Fac. VPAA Pools	3,428,597	1,028,579				4,457,176
400110 Unemployment Insurance-Instruction		115,019				115,019
500010 Technology Renewal Fund			555,000			555,000
500016 Technology Resources Fund - Instr.			270,513			270,513
500021 Information Svcs & Planning - Inst	155,187	46,359	10,144	6,763		218,453
510014 IT PM, Risk & Security-Instruction	188,244	56,473	219,792			464,509

**South Texas College**  
**Unrestricted Fund**  
**Detail of Expenditures by Function, Classification and Organization**  
**Budget for Fiscal Year 2020 - 2021**

Organization	Salaries	Benefits	Operating	Travel	Capital	Total
511002 Client Services-Instruction	271,987	81,191	254,620			607,798
512002 Information Security - Instruction	114,407	34,322	289,088	11,835		449,652
520006 Systems & Networking-Instruction	565,196	169,559	1,736,173		370,602	2,841,530
520011 Information Technology-Instruction	179,686	53,905	54,407	27,051		315,049
520016 Applications Developmnt-Instruction	727,749	218,325	533,813			1,479,887
520021 Technology Support - Instruction	390,884	111,397	59,648	20,288		582,217
600007 CPWE - State	1,161,419	257,754	226,386	25,700	135,000	1,806,259
<b>Instruction</b>	<b>\$54,775,766</b>	<b>\$15,553,000</b>	<b>\$8,445,170</b>	<b>\$1,149,324</b>	<b>\$663,421</b>	<b>\$80,586,681</b>

**South Texas College**  
**Unrestricted Fund**  
**Detail of Expenditures by Function, Classification and Organization**  
**Budget for Fiscal Year 2020 - 2021**

Organization	Salaries	Benefits	Operating	Travel	Capital	Total
150050 RCPSE - State	164,035	49,211	50,000		190,587	453,833
223009 Art Speakers			3,634			3,634
223013 Women Studies			6,359			6,359
223018 Folklorico Dance			22,930	4,586		27,516
400111 Unemployment Insurance-Public Svc		5,676				5,676
500017 Technology Resources Fund - Pub Ser			2,396			2,396
500022 Information Svcs & Planning - PubS	1,376	410	90	60		1,936
510015 IT PM, Risk & Security-Public Srvc	1,669	501	1,947			4,117
511003 Client Services-Public Service	2,411	719	2,255			5,385
512003 Information Security - Publ Srvc	1,017	305	2,560	105		3,987
520007 Systems & Networking-Public Service	5,015	1,504	4,433		3,282	14,234
520012 Information Technology-Public Srvc	1,594	478	482	240		2,794
520017 Applications Develop-Public Service	6,458	1,939	4,728			13,125
520022 Technology Support - Public Srvc	3,470	989	528	180		5,167
600002 Workforce Develop & External Affair	1					1

**South Texas College**  
**Unrestricted Fund**  
**Detail of Expenditures by Function, Classification and Organization**  
**Budget for Fiscal Year 2020 - 2021**

Organization	Salaries	Benefits	Operating	Travel	Capital	Total
610030 CPWE - Non State	128,750	11,588	16,986			157,324
610031 CPWE - Conferences			62,312	2,430		64,742
610035 CPWE - New Contracts	97,398	8,766	59,554	20,000		185,718
610039 CPWE - Carryover	180,000	16,200	248,800	5,000		450,000
<b><i>Public Service</i></b>	<b><i>\$593,194</i></b>	<b><i>\$98,286</i></b>	<b><i>\$489,994</i></b>	<b><i>\$32,601</i></b>	<b><i>\$193,869</i></b>	<b><i>\$1,407,944</i></b>

**South Texas College**  
**Unrestricted Fund**  
**Detail of Expenditures by Function, Classification and Organization**  
**Budget for Fiscal Year 2020 - 2021**

Organization	Salaries	Benefits	Operating	Travel	Capital	Total
141007 Police Academy Non-Credit	10,000	900				10,900
141008 New Program Start Up Non-Credit	7,000	630				7,630
150049 RCPSE - Non State			35,000			35,000
210002 Academic Affairs _ VP Admin	102,265	20,345	145,444	7,731		275,785
210008 Academic Affairs Support			46,593	7,303		53,896
210031 Academic Advancement	380,748	114,226	10,836	10,307		516,117
210050 Temp Agency-Academic Affairs			84,529			84,529
212002 Director of ECHS			2,752	3,210		5,962
212004 Academies & High School Prj	256,140	76,842	2,454	5,411		340,847
212005 Dual Credit Academies			36,228	31,808		68,036
212012 Dual Credit Pathways	517,659	155,298	5,881	9,531		688,369
212100 Dual Credit Programs	347,511	102,536	23,158	13,658		486,863
213001 Curriculum & Student Learning	331,045	99,313	77,733	23,664		531,755
214001 Professional & Organizational Dev	291,559	84,298	116,357	14,286		506,500
221001 Div of Busines Public Safety & Tech	373,520	105,830	7,104	13,758		500,212

**South Texas College**  
**Unrestricted Fund**  
**Detail of Expenditures by Function, Classification and Organization**  
**Budget for Fiscal Year 2020 - 2021**

Organization	Salaries	Benefits	Operating	Travel	Capital	Total
221002 Division of Math & Science			19,031	16,342		35,373
222004 Adjunct Faculty Pecan Campus			28,291			28,291
223010 Div of Social & Behavioral Sciences	298,446	89,534	26,789	12,024		426,793
223012 Division of Liberal Arts	264,398	79,320	38,935	6,010		388,663
223032 Fine & Performing Arts			2,752			2,752
223037 Humanities			1,376	1,376		2,752
224013 Div Nursing & Allied Health	621,932	183,563	32,285	9,631		847,411
225005 Div. of Math, Science & BA Programs	581,591	174,478	27,247	13,177		796,493
225012 Professional Devel Instruct Initiat			18,802	11,596		30,398
225300 University Relations			7,338	5,503		12,841
400112 Unemployment Insurance-Acad Supp		32,981				32,981
500018 Technology Resources Fund - Aca Sup			21,875			21,875
500023 Information Svcs & Planning - AcaS	12,551	3,749	820	547		17,667
510016 IT PM, Risk & Security-Academ Suppt	15,226	4,567	17,773			37,566
511004 Client Services-Academic Support	21,997	6,565	20,590			49,152

**South Texas College**  
**Unrestricted Fund**  
**Detail of Expenditures by Function, Classification and Organization**  
**Budget for Fiscal Year 2020 - 2021**

Organization	Salaries	Benefits	Operating	Travel	Capital	Total
512004 Information Security - Aca Support	9,253	2,776	23,377	957		36,363
520008 Systems & Networking-Academic Suppt	45,712	13,714	40,475		29,969	129,870
520013 Information Technology-Academic Spp	14,532	4,359	4,400	2,187		25,478
520018 Applications Develop-Academic Suppt	58,860	17,660	43,167			119,687
520023 Technology Support - Academic Spprt	31,615	9,009	4,823	1,641		47,088
530001 Library Services	146,935	44,081	68,380	19,000		278,396
530002 Library Acquisition	623,539	178,239	454,970	6,000	216,769	1,479,517
530005 Library Automation			98,043	5,000		103,043
530006 Library Information Commons			44,300			44,300
530008 BAT and Support Materials			54,888		35,000	89,888
530010 Library Art Gallery	52,824	14,167	35,850	6,000	1,000	109,841
530012 Library Programming & Community Svc			27,925	5,700		33,625
530013 Library Public Services	1,481,388	421,623	46,850	22,000		1,971,861
540001 Educational Technologies	1,291,285	370,396	288,575	35,000		1,985,256
540005 Learning Commons and Open Labs	1,334,172	384,173	379,139	33,340		2,130,824

**South Texas College**  
**Unrestricted Fund**  
**Detail of Expenditures by Function, Classification and Organization**  
**Budget for Fiscal Year 2020 - 2021**

Organization	Salaries	Benefits	Operating	Travel	Capital	Total
540008 Educ Tech Maintenance & Replacement			319,650			319,650
560001 Office of Strategic Initiatives	110,304	33,092	193,400	23,000		359,796
570001 Centers for Learning Excellence	936,978	230,542	238,389	22,043		1,427,952
570003 CLE Online Tutoring			139,082			139,082
570004 Center for Learning Excellence_Pcan	244,261	21,983				266,244
570005 Center for Learning Excellence_MV	100,204	9,018				109,222
570006 Center for Learning Excellence_NAH	59,146	5,323				64,469
570007 Center for Learning Excellence_Tech	77,550	6,980				84,530
570008 Cntr for Learning Excellence_Starr	76,286	6,866				83,152
570009 CLE _ Supplemental Instruction	135,000	12,150				147,150
<b>Academic Support</b>	<b>\$11,263,432</b>	<b>\$3,121,126</b>	<b>\$3,363,656</b>	<b>\$398,741</b>	<b>\$282,738</b>	<b>\$18,429,693</b>



**South Texas College**  
**Unrestricted Fund**  
**Detail of Expenditures by Function, Classification and Organization**  
**Budget for Fiscal Year 2020 - 2021**

Organization	Salaries	Benefits	Operating	Travel	Capital	Total
215003 Valley Scholars-Student Services			20,615	4,501		25,116
223044 Center for Mexican American Studies	25,248	7,574	19,087			51,909
300002 Graduation			166,720			166,720
300003 Student Affairs & Enrollment Mgt	231,670	69,500	59,751	4,148		365,069
310012 Student Financial Services	1,395,336	418,602	56,171	37,239		1,907,348
312102 Admin Allowance-Pell			75,000			75,000
312104 Admin Allowance-Veterans			4,000			4,000
312106 Admin Allowance-FWS			60,000			60,000
320001 Admissions & Records	1,064,795	319,442	75,750	13,148		1,473,135
320002 Dual2Dgree	437,862	131,360	33,871	19,648		622,741
320003 College Connections	693,009	207,902	119,171	19,649		1,039,731
320012 Office of Enrollment Services	90,900	27,270	10,000	9,400		137,570
330003 Advising	906,647	271,994	29,171	10,648		1,218,460
330004 Counseling & Student Access Svcs	973,220	291,968	74,382	18,773		1,358,343
331001 Career & Employer Services	221,605	64,448	24,671	11,748		322,472

**South Texas College**  
**Unrestricted Fund**  
**Detail of Expenditures by Function, Classification and Organization**  
**Budget for Fiscal Year 2020 - 2021**

Organization	Salaries	Benefits	Operating	Travel	Capital	Total
340001 Special Programs	39,253	11,776	4,171	4,248		59,448
350001 Student Affairs	230,200	62,701	99,794	20,400		413,095
350030 Judicial Affairs	324,382	97,315	33,500	15,400		470,597
350031 Behavioral Intervention Team			22,000	19,400		41,400
350032 Student Activities & Wellness			20,000			20,000
360001 Student Assessment Center	657,820	197,006	106,236	23,746		984,808
360005 TSI Examination			51,747			51,747
360009 Student Assessment HESI A2 Exam			44,000			44,000
400113 Unemployment Insurance-Stu Svcs		16,826				16,826
500019 Technology Resources Fund - Stu Ser			26,749			26,749
500024 Information Svcs & Planning - StuS	15,352	4,585	1,003	669		21,609
510017 IT PM, Risk & Security-Studen Svcs	18,621	5,586	21,733			45,940
511005 Client Services-Student Services	26,906	8,032	25,177			60,115
512005 Information Security - Stu Svcs	11,317	3,395	28,585	1,170		44,467
520009 Systems & Networking-Student Svcs	55,910	16,773	49,493		36,646	158,822

**South Texas College**  
**Unrestricted Fund**  
**Detail of Expenditures by Function, Classification and Organization**  
**Budget for Fiscal Year 2020 - 2021**

Organization	Salaries	Benefits	Operating	Travel	Capital	Total
520014 Information Technology-Student Srvc	17,775	5,333	5,380	2,675		31,163
520019 Applications Develop-Student Srvcs	71,988	21,597	52,784			146,369
520024 Technology Support - Student Srvcs	38,664	11,017	5,898	2,006		57,585
<b><i>Student Services</i></b>	<b><i>\$7,548,480</i></b>	<b><i>\$2,272,002</i></b>	<b><i>\$1,426,610</i></b>	<b><i>\$238,616</i></b>	<b><i>\$36,646</i></b>	<b><i>\$11,522,354</i></b>

**South Texas College**  
**Unrestricted Fund**  
**Detail of Expenditures by Function, Classification and Organization**  
**Budget for Fiscal Year 2020 - 2021**

Organization	Salaries	Benefits	Operating	Travel	Capital	Total
100002 Professional Development			65,000			65,000
100003 Institutional Member			112,100			112,100
100004 Office of President	718,966	215,690	36,763	10,800		982,219
100005 Board of Trustees			18,000	22,500		40,500
100014 Institutional Advancement	74,029	22,209	9,000			105,238
100030 Redistricting			29,000			29,000
100070 External Affairs	2	1	10,000	10,000		20,003
120000 Public Relations/Marketing	1,104,261	315,950	360,962	14,000		1,795,173
120001 Catalogs & Brochures			35,000			35,000
120002 Printing Department			25,000			25,000
120016 Advertising			1,089,000			1,089,000
120022 PR-Promotional/Marketing			53,000			53,000
141002 Resource Dev., Mgt. and Compliance	443,370	133,013	103,377	5,000		684,760
141003 Community Engagement & Wrkforce Dev			3,500	4,000		7,500
141004 Comm Engagement & Ext Affairs (AtD)			22,180	15,750		37,930

**South Texas College**  
**Unrestricted Fund**  
**Detail of Expenditures by Function, Classification and Organization**  
**Budget for Fiscal Year 2020 - 2021**

Organization	Salaries	Benefits	Operating	Travel	Capital	Total
210033 Academic Adv Printed Marketing-AVP			13,623			13,623
210505 Academic Grants & Projects Officer			3,669	7,338		11,007
217101 Mid Valley Campus	279,834	83,952	25,902	2,077		391,765
217301 Starr County Campus	244,336	73,300	13,123	3,433		334,192
217401 Technology Campus			13,758	4,586		18,344
221010 Instr Printed Marketing-M&S and BAT			22,795			22,795
221422 Instr Printed Marketing - Tech			4,544			4,544
223054 Instr Printed Marketing - LA			4,678			4,678
223055 Instr Printed Marketing - SS			3,118			3,118
224024 Instr Printed Marketing - NAH			4,544			4,544
400001 Legal Services			302,813			302,813
400002 Audit Services			138,394			138,394
400003 Finance & Administrative Services	486,769	139,443	66,968	6,019		699,199
400013 Records Retention			50,000			50,000
400030 Election			140,000			140,000

**South Texas College**  
**Unrestricted Fund**  
**Detail of Expenditures by Function, Classification and Organization**  
**Budget for Fiscal Year 2020 - 2021**

Organization	Salaries	Benefits	Operating	Travel	Capital	Total
400032 Investment Advisor			67,952			67,952
400034 HR Employee Training			29,919			29,919
400060 Internal Audits	139,689	41,907	5,610	4,477		191,683
400090 Temp Agency-Finance & Adm Svcs			495,420			495,420
400114 Unemployment Insurance-Instit Supp		37,151				37,151
410005 Armored Car Svcs			33,113			33,113
410011 Fees and Other Charges			5,984			5,984
410012 Bond/Arbitrage/Disclosure			12,359			12,359
410013 Business Office	2,582,712	770,405	416,744	22,936	70,000	3,862,797
410015 Credit Card Charges			383,302			383,302
410043 Depository Service Fee			100,000			100,000
410050 Cashiers Office	912,871	256,801	98,936	13,984		1,282,592
410098 Uncollectible Accounts - 2020			1,696,562			1,696,562
420001 Postage			196,968			196,968
420002 Copy Center			36,968			36,968

**South Texas College**  
**Unrestricted Fund**  
**Detail of Expenditures by Function, Classification and Organization**  
**Budget for Fiscal Year 2020 - 2021**

Organization	Salaries	Benefits	Operating	Travel	Capital	Total
420006 Loss Fund			66,968			66,968
420007 Purchasing	830,414	245,974	88,968	4,290	30,000	1,199,646
420009 Asset Management			20,984			20,984
430002 Institutional Moves			24,597			24,597
431010 Student Transportation Services	132,156	39,649	308,100			479,905
450001 General Services	67,418	20,225				87,643
450005 Vehicle Maintenance			9,000			9,000
460001 Human Resources	1,509,724	450,871	403,121	19,619		2,383,335
480001 Accountability, Risk, and Complian	339,795	101,938	12,361	4,739		458,833
490001 Office of Institutional Equity	179,385	53,816	67,000	23,000		323,201
500001 Technology Resource Fund - Institut			41,545			41,545
500002 Information Services & Planning	23,819	7,115	1,558	1,039		33,531
510005 IT PM, Risk and Security	28,894	8,669	33,756			71,319
511001 Client Services	41,748	12,463	39,105			93,316
512001 Information Security	17,559	5,268	44,398	1,819		69,044

**South Texas College**  
**Unrestricted Fund**  
**Detail of Expenditures by Function, Classification and Organization**  
**Budget for Fiscal Year 2020 - 2021**

Organization	Salaries	Benefits	Operating	Travel	Capital	Total
520002 Systems and Networking	86,750	26,027	76,873		56,918	246,568
520003 Information Technology	24,523	7,357	8,356	4,155		44,391
520004 Applications Development	111,708	33,516	81,984			227,208
520005 Technology Support	60,003	17,104	9,162	3,116		89,385
540010 Technology Projects			39,000			39,000
550001 Research and Analytical Services	444,900	133,366	62,500	42,500		683,266
550002 Inst'l Effectiveness and Assessment	284,348	83,029	18,725	17,600		403,702
550003 Inst'l Research & Effectiveness	157,170	47,151	5,000	13,000		222,321
560002 Accreditation			77,500	10,000		87,500
610032 CPWE - PR & Advertising			55,640			55,640
410017 Hidalgo Appraisal/Collection Fee			755,592			755,592
410018 Starr Appraisal/Collection Fee			266,919			266,919
<b><i>Institutional Support</i></b>	<b><i>\$11,327,153</i></b>	<b><i>\$3,383,360</i></b>	<b><i>\$8,978,360</i></b>	<b><i>\$291,777</i></b>	<b><i>\$156,918</i></b>	<b><i>\$24,137,568</i></b>



**South Texas College**  
**Unrestricted Fund**  
**Detail of Expenditures by Function, Classification and Organization**  
**Budget for Fiscal Year 2020 - 2021**

Organization	Salaries	Benefits	Operating	Travel	Capital	Total
400005 Insurance			836,067			836,067
400115 Unemployment Insurance-O&M		15,510				15,510
420003 Distribution Center	129,515	38,856	15,984			184,355
420004 Central Receiving	476,222	142,868	30,000	2,000	62,000	713,090
420005 Inventory Control			13,000			13,000
430001 Dir Fac Planning & Construction	752,870	223,344	111,678	18,643		1,106,535
430012 Physical Education Facility Rental			36,978			36,978
430015 Lease-NAH El Milagro Parking Lot			1,312			1,312
430017 Custodial Fees-La Joya Teach Site			8,936			8,936
430018 New Furniture			99,361			99,361
430019 Lease-City of Edinburg Fire Dept			16,968			16,968
430022 Lease - PSJA CCTA			65,903			65,903
450002 Safety & Security	1,142,666	342,806	194,477	4,574		1,684,523
450003 Facilities Operations & Maintenance	528,197	158,459	25,000	7,197		718,853
450004 Custodial	2,875,575	860,370	588,000	14,191		4,338,136

**South Texas College**  
**Unrestricted Fund**  
**Detail of Expenditures by Function, Classification and Organization**  
**Budget for Fiscal Year 2020 - 2021**

Organization	Salaries	Benefits	Operating	Travel	Capital	Total
450006 Facility Maintenance	2,121,827	636,554	1,352,000	40,000		4,150,381
450007 Grounds Maintenance			735,000			735,000
450008 Mechanical System Maintenance			800,000			800,000
450009 Security & Emergency Preparedness			164,912			164,912
450011 Util - 2501 Pecan			54,000			54,000
450016 Util - Pecan Campus			2,229,294			2,229,294
450019 Util - Mid Valley Campus			1,001,851			1,001,851
450020 Util - Technology Campus			681,765			681,765
450021 Util - Starr Campus			697,019			697,019
450022 Util - NAH Campus			580,688			580,688
450023 Util - Pecan Plaza			62,000			62,000
450025 Utilities - Pharr RCPSE			53,858			53,858
450035 Repair and Maintenance			100,000			100,000
450038 Environmental			140,000	9,197		149,197
450051 Campus Police	1,607,511	482,253	193,974	14,377		2,298,115

**South Texas College**  
**Unrestricted Fund**  
**Detail of Expenditures by Function, Classification and Organization**  
**Budget for Fiscal Year 2020 - 2021**

Organization	Salaries	Benefits	Operating	Travel	Capital	Total
450060 Department of Public Safety	104,321	31,297	53,117	5,719		194,454
500020 Technology Resources Fund - O&M			36,922			36,922
500025 Information Svcs & Planning - O&M	21,179	6,327	1,385	922		29,813
510018 IT PM, Risk & Security - O&M	25,692	7,708	29,999			63,399
511006 Client Services-O&M	37,121	11,081	34,753			82,955
512006 Information Security - O&M	15,614	4,684	39,457	1,614		61,369
520010 Systems & Networking - O&M	77,137	23,142	68,317		50,583	219,179
520015 Information Technology-O&M	27,579	8,274	7,425	3,692		46,970
520020 Applications Development - O&M	99,322	29,797	72,859			201,978
520025 Technology Support - O&M	53,348	15,203	8,141	2,769		79,461
<b>Operation and Maintenance</b>	<b>\$10,095,696</b>	<b>\$3,038,533</b>	<b>\$11,242,400</b>	<b>\$124,895</b>	<b>\$112,583</b>	<b>\$24,614,107</b>

**South Texas College**  
**Unrestricted Fund**  
**Detail of Expenditures by Function, Classification and Organization**  
**Budget for Fiscal Year 2020 - 2021**

Organization	Salaries	Benefits	Operating	Travel	Capital	Total
100006 Contingency-Reserve			2,000,000			2,000,000
100009 Transfer-Building Fund			2,000,000			2,000,000
400050 Transfer-ITED			865,581			865,581
400070 HEGI Reserve			2,830,159			2,830,159
<b>Transfers and Reserves</b>	<b>\$0</b>	<b>\$0</b>	<b>\$7,695,740</b>	<b>\$0</b>	<b>\$0</b>	<b>\$7,695,740</b>
<b>Total Expenditures</b>	<b>\$95,603,721</b>	<b>\$27,466,307</b>	<b>\$41,641,930</b>	<b>\$2,235,954</b>	<b>\$1,446,175</b>	<b>\$168,394,087</b>

# **Unrestricted Fund Capital Expenditures**

**South Texas College**  
**Unrestricted Fund**  
**Summary of Capital Expenditures by Function and Organization**

**Budget for Fiscal Year 2021**

Organization Name	Organization Code	Total
<b>Instruction</b>		
Learning Outcomes	210027	\$ 90,000
Biology	221301	50,985
Automotive Technology	221402	16,834
CPWE State	600007	135,000
Technology-Instruction	Multiple	370,602
<b>Total Instruction</b>		<b>663,421</b>
<b>Public Service</b>		
RCPSE-State	150050	190,587
Technology-Public Service	Multiple	3,282
<b>Total Public Service</b>		<b>193,869</b>
<b>Academic Support</b>		
Library Acquisition	530002	216,769
BAT and Support Materials	530008	35,000
Library Art Gallery	530010	1,000
Technology-Academic Support	Multiple	29,969
<b>Total Academic Support</b>		<b>282,738</b>
<b>Student Services</b>		
Technology-Student Services	Multiple	36,646
<b>Total Student Services</b>		<b>36,646</b>
<b>Institutional Support</b>		
Business Office	410013	70,000
Purchasing	420007	30,000
Technology-Institutional Support	Multiple	56,918
<b>Total Institutional Support</b>		<b>156,918</b>
<b>Operation &amp; Maintenance</b>		
Central Receiving	420004	62,000
Technology-Operation & Maintenance	Multiple	50,583
<b>Total Operation &amp; Maintenance</b>		<b>112,583</b>
<b>Total Capital Expenditures</b>		<b>\$ 1,446,175</b>

**South Texas College**  
**Unrestricted Fund**  
**Detail of Capital Expenditures by Function and Organization**  
**Budget for Fiscal Year 2020 - 2021**

Organization Name	Organization Code	Item	Qty	Unit Cost	Total Cost
<b>Instruction</b>					
Learning Outcomes	210027	e-Portfolio assessment platform	1	\$ 90,000	\$ 90,000
Biology	221301	Nanodrop spectrophotometer	1	9,700	9,700
		Standing centrifuge	2	11,200	22,400
		BioRad Gel Doc EZ imager	1	8,645	8,645
		Incubating shaker	1	10,240	10,240
Automotive Technology	221402	Transmission fluid exchange machine	1	5,795	5,795
		Pro-Cut on-car brake lathe	1	11,039	11,039
CPWE State	600007	Forklift	1	16,000	16,000
		Truck driving simulator	1	119,000	119,000
Technology-Instruction <sup>(1)</sup>	Multiple	Refer to Technology by Function* <sup>(2)</sup>	1	370,602	370,602
<b>Total Instruction</b>					<b>\$ 663,421</b>
<b>Public Service</b>					
RCPSE-State	150050	Falcon EX car with control panel	1	\$ 83,575	\$ 83,575
		Breathing air systems mobile air trailer	1	107,012	107,012
Technology-Public Service <sup>(1)</sup>	Multiple	Refer to Technology by Function* <sup>(2)</sup>	1	3,282	3,282
<b>Total Public Service</b>					<b>\$ 193,869</b>
<b>Academic Support</b>					
Library Acquisition	530002	Books and videos	1	\$ 216,769	\$ 216,769
BAT and Support Materials	530008	Books, ebooks, streaming videos	1	35,000	35,000
Library Art Gallery	530010	Art collection items and donations	1	1,000	1,000
Technology-Academic Support <sup>(1)</sup>	Multiple	Refer to Technology by Function* <sup>(2)</sup>	1	29,969	29,969
<b>Total Academic Support</b>					<b>\$ 282,738</b>
<b>Student Services</b>					
Technology-Student Services <sup>(1)</sup>	Multiple	Refer to Technology by Function* <sup>(2)</sup>	1	\$ 36,646	\$ 36,646
<b>Total Student Services</b>					<b>\$ 36,646</b>
<b>Institutional Support</b>					
Business Office	410013	AP electronic approval software	1	\$ 70,000	\$ 70,000
Purchasing	420007	Contract and vendor insurance tracking software, electronic RFPs	1	30,000	30,000
Technology-Institutional Support <sup>(1)</sup>	Multiple	Refer to Technology by Function* <sup>(2)</sup>	1	56,918	56,918
<b>Total Institutional Support</b>					<b>\$ 156,918</b>
<b>Operation &amp; Maintenance</b>					
Central Receiving	420004	Cargo truck	1	\$ 62,000	\$ 62,000
Technology-Operation & Maintenance <sup>(1)</sup>	Multiple	Refer to Technology by Function* <sup>(2)</sup>	1	50,583	50,583
<b>Total Operation &amp; Maintenance</b>					<b>\$ 112,583</b>
<b>Total Capital Expenditures</b>					<b>\$ 1,446,175</b>

**South Texas College**  
**Unrestricted Fund**  
**Detail of Capital Expenditures by Function and Organization**  
**Budget for Fiscal Year 2020 - 2021**

Organization Name	Organization Code	Item	Qty	Unit Cost	Total Cost
<b>(1) Technology</b>					
Systems and Networking	520002	Datacenter enterprise switches replacements/additions	1	\$ 95,000	\$ 95,000
		Datacenter equipment replacements/additions	1	65,000	65,000
		New Oracle software licenses (DB, Golden Gate,OAS)	1	88,000	88,000
		Hardware upgrades for test and DR environments	1	300,000	300,000
<b>Total Technology</b>					<b>\$ 548,000</b>
<b>(2) Technology by Function*</b>					
Technology-Instruction	Multiple	Various-Technology	1	Various	\$ 370,602
Technology-Public Service	Multiple	Various-Technology	1	Various	3,282
Technology-Academic Support	Multiple	Various-Technology	1	Various	29,969
Technology-Student Services	Multiple	Various-Technology	1	Various	36,646
Technology-Institutional Support	Multiple	Various-Technology	1	Various	56,918
Technology-Operation & Maintenance	Multiple	Various-Technology	1	Various	50,583
<b>Total Technology by Function</b>					<b>\$ 548,000</b>





# SOUTH TEXAS COLLEGE

This page intentionally left blank.

# **Auxiliary Fund**

# South Texas College

## Auxiliary Fund

### Detail of Revenues by Source

#### Comparison of Previous Fiscal Years with Fiscal Year Ending August 31, 2021

Revenue Source	FY '19 Budget	FY '20 Budget (As Amended)	FY '21 Budget
Bookstore	\$ 500,000	\$ 313,173	\$ 400,000
Catering Services	500	-	-
Interest Income	18,000	24,000	12,000
Food Service-Mid Valley	269,644	112,768	60,822
Food Service-NAH	251,281	127,039	77,164
Food Service-Pecan	581,423	445,631	249,171
Food Service-Starr	-	3	37,804
Food Service-Tech	46,300	26,266	55,664
General Conferences	135,000	135,000	135,000
MV-Child Care & Development	364,475	238,142	364,475
Non Public Fund	838,515	744,149	688,299
Professional Development Conferences	80,000	80,000	80,000
Self Supporting Conferences	90,857	85,455	85,033
Student Activity Fee*	1,651,835	1,453,265	1,272,290
Student Copier	2,500	1,200	1,000
Vending Machines	140,000	119,011	120,000
Carryover Fund Balance - Micro Grant Scholarships	-	100,000	100,000
<b>Total Revenues</b>	<b>\$ 4,970,330</b>	<b>\$ 4,005,102</b>	<b>\$ 3,738,722</b>

\* Based on Mandatory Student Activity Fee of \$4 per credit hour.

**South Texas College**  
**Auxiliary Fund**  
**Detail of Expenditures by Classification and Organization**  
**Budget Fiscal Year Ending August 31, 2021**

Organization Name	Salaries	Benefits	Operating	Travel	Capital	Scholarship	Total
Accreditation Auxiliary	\$ -	\$ -	\$ 6,000	\$ -	\$ -	\$ -	\$ 6,000
Admin-Board of Trustees	-	-	1,518	-	-	-	1,518
Admin-Center for Learn Excellence	-	-	482	-	-	-	482
Admin-Enrollment Svc	-	-	837	-	-	-	837
Admin-Executive	-	-	1,735	-	-	-	1,735
Admin-Graduation	-	-	14,214	-	-	-	14,214
Admin-HR Employee Training & Recruit	-	-	805	-	-	-	805
Admin-Student Affairs	-	-	1,445	-	-	-	1,445
Admin-Valley Scholars	-	-	1,000	-	-	-	1,000
Admin-VP Academic Affairs	-	-	3,229	-	-	-	3,229
Admin-VP Finance & Admin Svcs	-	-	3,229	-	-	-	3,229
Admin-VP Info Svcs & Planning	-	-	3,229	-	-	-	3,229
Admin-VP Stud Svcs & Develop	-	-	3,229	-	-	-	3,229
Admin-Workforce Development	-	-	1,182	-	-	-	1,182
AEDT Program Events	-	-	3,184	-	-	-	3,184
Alumni and Friends	-	-	1,205	-	-	-	1,205
Art Gallery - Library Projects	-	-	133	-	-	-	133
Auxiliary Business Operations	40,000	12,000	-	-	-	-	52,000
Ballet Folklorico Dance Carryover	-	-	38	-	-	-	38
Ballet Folklorico Dance Company	-	-	15,835	-	-	-	15,835
Binational Innovation Conference	-	-	1,775	-	-	-	1,775
Career Expo	-	-	1,526	-	-	-	1,526
Child Dev. Conference Fall &	-	-	11,273	600	-	-	11,873
Communication Arts Festival - AUX	-	-	33	-	-	-	33
Community Engagement	-	-	723	-	-	-	723
CPWE - Auxiliary	-	-	482	-	-	-	482
Critical Thinking Conf - ADN/CHOC	-	-	3,055	-	-	-	3,055
Dr. Godinez Memorial Fund	-	-	2,129	-	-	-	2,129
Drama Theater	-	-	6,788	-	-	-	6,788
Empl Spouse/Depend Waiver	-	-	148,488	-	-	-	148,488
Employee Appreciation & Recognition	-	-	1,205	-	-	-	1,205
External Affairs	-	-	963	-	-	-	963
Food Services	246,219	94,797	137,209	2,400	-	-	480,625
General Conferences	-	-	135,000	-	-	-	135,000
IME-BECAS Scholarship STC Matching	-	-	-	-	-	2,200	2,200
Institutional Grant	-	-	-	-	-	1,300	1,300
IS&P Focus Groups	-	-	24	-	-	-	24
ITED Conferences	-	-	12,879	-	-	-	12,879
Library Art Gallery Events	-	-	603	-	-	-	603
Library Events	-	-	723	-	-	-	723
MV-Child Care & Development	210,282	92,524	59,669	2,000	-	-	364,475
Non Public Fund	-	-	688,299	-	-	-	688,299
Other Reserve	-	-	194,945	-	-	-	194,945
Philosophy Across the Americas	-	-	963	-	-	-	963
PR-College Events	-	-	14,956	-	-	-	14,956

**South Texas College**  
**Auxiliary Fund**  
**Detail of Expenditures by Classification and Organization**  
**Budget Fiscal Year Ending August 31, 2021**

<b>Organization Name</b>	<b>Salaries</b>	<b>Benefits</b>	<b>Operating</b>	<b>Travel</b>	<b>Capital</b>	<b>Scholarship</b>	<b>Total</b>
Professional Dev Conferences	-	-	80,000	-	-	-	80,000
Professional Dev. Sponsorships	-	-	4,641	-	-	-	4,641
PSJA College for All STC Campus Tour	-	-	275	-	-	-	275
RCPSE Trainings	-	-	96	-	-	-	96
Science Olympiad/Planetarium-Aux	-	-	4,271	-	-	-	4,271
Staff Devlpmt-College Wide	-	-	25,000	-	-	-	25,000
STC Future Heroes 5K Challenge	-	-	2,045	-	-	-	2,045
STC Black History Month - AUX	-	-	18	-	-	-	18
STC Student Assistance Micro Grants	-	-	-	-	-	100,000	100,000
Stu Initiative-BA Prgm & Univ Rel	-	-	1,000	-	-	-	1,000
Student Activities & Wellness	862,497	247,503	147,290	15,000	-	-	1,272,290
Student Affairs Trainings and Events	-	-	10,597	-	-	-	10,597
Student Copier	-	-	27,356	-	-	-	27,356
Summit on College & Career Readiness	-	-	10,484	-	-	-	10,484
TASA Conference	-	-	6	-	-	-	6
TxDot Student Books	-	-	2,000	-	-	-	2,000
Victim Scholarship	-	-	-	-	-	5,000	5,000
Will'n In Weslaco	-	-	537	-	-	-	537
Women's History Month - AUX	-	-	286	-	-	-	286
Women's Studies Human Rights	-	-	218	-	-	-	218
Women's Studies Sex Traffic Conf	-	-	2,041	-	-	-	2,041
<b>Total Expenditures</b>	<b>\$ 1,358,998</b>	<b>\$ 446,824</b>	<b>\$ 1,804,400</b>	<b>\$ 20,000</b>	<b>\$ -</b>	<b>\$ 108,500</b>	<b>\$ 3,738,722</b>



# SOUTH TEXAS COLLEGE

This page intentionally left blank.

# **Restricted Fund**

# South Texas College

## Restricted Fund

### Detail of Revenues by Source

#### Comparison of Previous Fiscal Years with Fiscal Year Ending August 31, 2021

Fund	FY '19 Budget	FY '20 Budget (As Amended)	FY '21 Budget
<b>Revenue</b>			
15th STC Anniversary Recognition	\$ 15,083	\$ 15,083	\$ 15,083
2013 Leah Meyer Austin Award	750	750	750
3rd Party RCPSE	-	-	5,000
3rd Party - CPE	8,100	41,000	6,000
3rd Party - CPE State	1,440	-	-
AAWCC Scholarship	500	-	2,000
Adult Learner Academy	-	36,900	36,900
Americorp National Service	47,400	20,000	10,800
AT&T Foundation - BAT Scholarship	37	500	25
Barnes & Noble General Scholarship	3,975	15,000	15,000
BAT Scholarship	-	250	250
BBVA Compass Foundation	15,000	15,000	15,000
Blimpie Scholarship	1,000	-	-
Border Security Training Center	97,369	78,318	78,318
Border Texan of the Year Funds	37,690	37,700	37,690
Border Texan Starr Cnty Scholarship	20,000	20,000	20,000
Cambria Changing Lives Scholarship	-	-	1,000
CARES Act HEERF - Institutional Funds	-	10,011,199	-
CARES Act HEERF - MSI	-	-	1,255,089
Carl Perkins Basic	1,684,000	1,822,900	1,800,000
Carl Perkins Leadership ACE - IT	-	-	170,850
Carl Perkins Sub Award PSJA	-	510,085	-
Catch the Next Dream Catchers Progr	18,000	13,600	-
CCAMPIS	223,450	232,450	12,000
CDA Conference	2,500	-	-
CDA Program	40,480	-	-
Cengage - Gatlin	480	-	-
Cengage - Oncourse - Real Estate	5,000	-	-
Charles Robison Scholarship	2,100	3,400	3,498
Child and Adult Care Food Program	54,500	61,546	-
Childcare Quality Training Conferences	-	5,000	10,000
Childcare Training Quality Development	-	42,075	-
CHOC Scholarship	2,550	2,650	2,250
City of McAllen 21	29,887	-	-
City of McAllen 22	500,000	19,432	-
City of McAllen 23	-	273,210	23,537
City of McAllen 24	-	-	470,400
Cnty Hidalgo Community Service Agen	-	4,500	4,500



# South Texas College

## Restricted Fund

### Detail of Revenues by Source

#### Comparison of Previous Fiscal Years with Fiscal Year Ending August 31, 2021

<b>Fund</b>	<b>FY '19 Budget</b>	<b>FY '20 Budget (As Amended)</b>	<b>FY '21 Budget</b>
College Readiness and Success	-	53,000	-
College Readiness and Success Completion	-	66,638	116,712
College Readiness Initiatives	5,000	-	5,000
Communities Foundation	-	-	70,000
Community Health Project	-	50,000	30,833
Constancia G. Oliva Scholarship	500	750	750
Continuous Improvement Grant	51,494	-	42,911
CPE La Joya ISD	44,200	60,000	40,000
CPE McAllen ISD	16,700	23,000	90,000
CPE Rio Grande City CISD	639	639	101,000
CPE Sharyland ISD	45,000	45,000	5,000
CPE Texas Workforce Commission	36,000	14,000	200
CPE Valley View ISD Training	12,100	-	-
CPWE - Materials	2,700	2,700	2,700
Criminal Justice Scholarship	-	-	1,050
Dept of Assist & Rehab Academic	60,000	-	-
Diesel Technology Scholarship	-	2,600	3,000
Donna Independent School District	42,800	42,000	30,000
Dr. John F. Carroll Drama Scholarship	9,700	10,000	10,000
Dr. Ramiro Casso Scholarship	-	4,900	4,900
Early Childhood Child Dev't Schlrs	2,410	3,000	4,900
ED2GO_CPE	600	-	-
Edecouch-Elsa Independent School Dist	17,100	13,000	6,000
Edinburg CISD	49,300	37,000	37,000
Edinburg EDC	-	73,260	73,260
Elide Lee Scholarship Fund	-	1,500	1,500
Encore Capital Grp Comm College Sch	650	500	500
End. Glen & Rita Roney Scholarship	5,243	6,000	6,000
English Scholarship	-	500	500
Experience Exceptional Scholarship	-	-	20,000
F&S Donations for Stdnt Scholarship	-	-	15,000
Federal College Work Study	750,000	700,000	700,000
Federal CWS Allowance	-	35,000	7,000
Federal Pell	60,000,000	60,000,000	58,000,000
Federal Pell Allowance	56,858	72,000	72,000
Federal SEOG - Current Year	750,000	700,000	700,000
Gabriel "Spiffy 32" Ramirez Scholars	-	1,000	1,000
GED Tuition Assist Scholarship	2,700	2,700	-
Gene Haas Scholarship	19,000	33,000	20,000

# South Texas College

## Restricted Fund

### Detail of Revenues by Source

#### Comparison of Previous Fiscal Years with Fiscal Year Ending August 31, 2021

Fund	FY '19 Budget	FY '20 Budget (As Amended)	FY '21 Budget
General Scholar Fund - Donation	200	100	1,050
Genrl Scholar - De Los Santos Endowment	411	300	1,200
Gloria Fitch Scholarship	6,500	6,750	8,250
Grad TX Program	31,776	-	-
Gloria Kenison Memorial Scholarship	-	-	9,000
Gral Scholarship 3rd Party Agency	240,000	100,000	95,000
Harold W. McGraw Jr. Prize	50,000	-	50,000
HDJT Edinburg	-	73,260	11,172
HDJT Weslaco	-	24,058	-
HEERF Cares Act - Student	-	4,372,800	5,638,399
Hidalgo Co. Scholarship	10,255	11,000	10,000
Hidalgo County Community Service	10,400	-	-
Hidalgo County Headstart	2,600	8,000	27,700
Hidalgo ISD	8,100	9,000	9,000
Hidalgo ISD Training	5,900	11,500	6,500
High Demand Job Training	71,520	-	-
High School Equivalency Program	-	-	365,706
Holocaust	-	1,900	-
i3 Heal2 Project	-	84,500	-
IME-Becas Scholarship	8,900	-	-
Interest Income	6,051	6,051	6,051
Inventors and Entepreneur Collaboration	1,521	983	655
IS&P Adm Professionals' Scholarship	600	750	375
ITED/IAM Scholarship Fund	-	-	500
ITED Sustainability	-	1,057,900	1,022,217
Jeremy McLeash Scholarship Fund	1,200	5,500	5,500
Jesse Trevino Second Chance Scholarship	-	-	3,000
John Wright Burger King	25	25	25
Juan Diego Academy	-	-	3,000
Karen Wilson-Nursing Scholarship	5,760	5,500	5,500
Kathleen A. Pavlisko Scholarship	-	300	300
Kennedy Memorial Foundation Scholarship	25,714	22,500	15,000
Kent Biel Automotive Scholarship	-	27,000	27,000
Kinesiology Turkey Trot	15	15	-
Knapp	24,000	-	-
La Joya Independent School District	71,300	96,000	63,000
La Villa Independent School District	9,200	6,500	6,500
Lacks Employee & Dependent Scholars	176	250	250
LRGVWDB WIA (Adult)	63,500	125,000	100,000

# South Texas College

## Restricted Fund

### Detail of Revenues by Source

#### Comparison of Previous Fiscal Years with Fiscal Year Ending August 31, 2021

Fund	FY '19 Budget	FY '20 Budget (As Amended)	FY '21 Budget
LRGVWDB WIA (Dislocated Worker)	8,600	18,000	3,000
LRGVWDB WIA (Youth)	-	-	21,482
LRGVWDB-WIA-TAA DW	12,500	2,800	7,100
LRGVWDB-WIA-TAA DW CPWE	174,700	218,000	3,500
Luis Alberto Gomez Scholarship	-	50	50
Maudie Mary Finney Memorial Scholarship	11,800	13,800	13,800
McAllen ISD	40,100	53,000	33,000
MEDA Scholarship	180,000	180,000	180,000
Memorial Garden Fundraising	24,813	24,813	25,446
Mercedes ISD	35,000	32,000	32,000
Mesteño Scholarship Fund	-	50,000	10,000
MET Green Construction	43,900	43,900	-
MET Trainings Other	166,500	130,000	30,000
MET Medical Office Specialist	63,100	68,000	90,000
Metlife Foundation Excellence	12,150	-	-
Mexican Consulate	100	100	100
Military Spouse Career Adv Accts	6,000	6,465	7,820
Mission CISD	64,500	79,000	60,000
Mission EDC College Readiness	6,000	6,000	6,000
Monte Alto ISD	7,400	4,500	4,500
Motivation Edu & Train Truck Driving	211,500	78,000	-
Nadia & Lauren Lopez Memorial Schol	-	2,500	2,500
NAH College Success Scholarship	500	5,000	1,875
NAH Student Emergency Funds Scholarship	-	100	100
NASA Scholarship	100	100	100
Noble Charities Scholarship	5,000	3,700	6,500
NSF Six S Academy	-	-	158,789
Nursing Innovation Grant Program	30,929	27,000	83,028
Nursing Shortage Reduction > 70% FY15	194,287	-	-
Nursing Shortage Reduction Program	-	138,000	-
Oratory Athenaum Preparatory	-	-	200
PEO Scholarship	-	-	150
Pepsi - General Scholarship	23,760	17,760	27,760
Perkins Reserve (PSJA)	-	-	42,055
Pharr San Juan Alamo ISD	100,400	82,000	110,000
Physical Sci & Engr Dept Schlsp	800	1,100	1,500
PMTD (Woodcrafters Project)	500	500	500
Political Science Dept Scholarship	600	1,800	2,000
Premier High Schools	-	-	1,000

# South Texas College

## Restricted Fund

### Detail of Revenues by Source

#### Comparison of Previous Fiscal Years with Fiscal Year Ending August 31, 2021

<b>Fund</b>	<b>FY '19 Budget</b>	<b>FY '20 Budget (As Amended)</b>	<b>FY '21 Budget</b>
Professional Nursing Shortage Reduction Program-Under 70	-	113,000	409,309
Progreso ISD	17,800	25,000	20,000
PSJA ISD Training	164,400	260,000	120,000
Psychology Scholarship Fund	1,300	1,500	1,500
Quilting Society Scholarship	-	6,000	12,000
Radiology Program Donation	-	-	500
Ramanujam Scholarship	263	350	350
Region One Gear Up	-	140,000	-
Retirement Allo Remn	27,984	27,984	27,984
RGV Focus - Gates Grant Program	14,000	-	-
Rio Grande CISD	23,600	19,000	25,000
Rio South Texas	-	-	314,150
Roma Independent School District	36,000	48,000	30,000
Royal Technologies Corp Scholarship	10,000	14,000	14,000
Saint Gorbain Corp. Gift	1,470	1,470	1,470
Samuel I Hernandez Sch	-	500	500
San Isidro ISD	-	-	1,000
Senator Hinojosa Scholarship	8,500	10,100	2,250
SDF - Partnership with A Healthcare	1,270,362	-	-
Sharyland ISD	24,400	8,600	40,000
Skills Development Fund 25-Partners	-	11,678	-
Skills Development Fund 26	-	82,699	-
Skills Development Fund 28	-	359,861	186,518
Skills Development Fund 29	-	402,500	525,250
So Tx Health System NAH Scholarship	38,466	38,500	31,000
So Tx Precision Manufacturing Sch	1,000	3,750	4,500
Sociology, Anthropology, Social Wor	2,600	2,250	2,000
South Texas Academic Rising Scholarship	250	48,000	46,750
South Texas ISD	19,800	24,000	34,000
Speech Competition	50	50	50
Starr Campus Donation	2,220	2,220	2,220
Starr County Strategic Plan	-	55,000	-
Starr Cnty-Recognition Ceremon-Rest	2	2	2
Starr Psychology Club Scholarship	-	750	1,000
State Certified Educational Aide Sch	5,000	9,000	16,500
State Farm Program	-	2,808	-
STC Alumni and Friends-Scholarship	8,354	8,800	9,000
STC Faculty Sch Fund	-	800	800
STC Student Assitance Fund	22	200	4,500

# South Texas College

## Restricted Fund

### Detail of Revenues by Source

#### Comparison of Previous Fiscal Years with Fiscal Year Ending August 31, 2021

<b>Fund</b>	<b>FY '19 Budget</b>	<b>FY '20 Budget (As Amended)</b>	<b>FY '21 Budget</b>
STC in FOCUS (HIS Grant)	496,693	98,674	-
STEP 2 USDA Research Success	25,000	-	-
STHS-McAllen Med Cen Foundation Sch	-	49,000	49,000
Strengthening Guided Pathways	-	-	30,000
Susan Harwood Grant	-	33,944	-
TAB-BASOL/TMGT	-	61,878	2,927
TAB-Medical and Health Service Management	-	40,650	50,895
TAB-Handbook	-	14,906	-
TAB-UTRGV	-	-	17,860
TAEYC	-	-	1,600
Talent Hub	-	35,000	-
TAPPA, CAPPA, & APPA Conferences	688	688	688
TDA Child and Adult Care Food Program	-	-	2,000
Team McAllen Cycling Club Sch	1,500	1,800	-
TEOG Initial - Current Year	1,481,763	1,602,100	1,638,868
TEOG Renewal - Current Year	1,103,641	1,090,000	1,092,578
Texas Affordable Baccalaureate Expansion	41,033	34,500	-
Texas College Work Study	161,866	140,000	136,000
Texas College Work Study Mentorship	-	140,899	-
Texas Communities Foundation	-	1,000	-
Texas Tuition Promise Fund	9,400	18,300	38,000
Texas Workforce Commission	148,200	87,000	69,000
TexPREP Program - Hidalgo ISD	36,000	36,000	27,000
TexPREP Program - PSJA ISD	36,000	36,000	27,000
TexPREP Program - Roma ISD	36,000	36,000	27,000
TexPREP Program - Weslaco ISD	27,000	36,000	27,000
The Dream. US Scholarship	36,700	56,000	35,000
The Institute for Advanced Manufacturing	77,300	150,000	100,000
THECB T-STEM Challenge Scholarship Program	125,723	-	-
Third Party Local Fund	21,400	57,000	68,000
TMC Early Head Start Program	5,100	-	-
TPEG CPWE	245,700	245,700	245,700
TPEG ITED	211,900	211,900	211,900
TPEG Non Resident Curr Yr	33,000	33,000	33,000
TPEG Resident Curr Yr	1,629,769	1,629,769	1,629,769
TPEG - NAH	1,500	1,500	1,500
Transfer - Unrestricted - ITED	1,814,531	949,704	865,581
Truth Initiative Respiratory Club	-	16,812	6,229
TSC Contract	80,518	-	-

# South Texas College

## Restricted Fund

### Detail of Revenues by Source

#### Comparison of Previous Fiscal Years with Fiscal Year Ending August 31, 2021

<b>Fund</b>	<b>FY '19 Budget</b>	<b>FY '20 Budget (As Amended)</b>	<b>FY '21 Budget</b>
TWC Ability to Benefit-Pell	-	9,253	71,707
TWC Accelarate Texas IV	-	185,765	147,951
TWC Explore STEM!	-	45,500	-
TWC Self Sufficiency Fund	-	140,860	10,740
TWC Skills 27 Partnership with RGV	-	752,083	59,305
TWC Skills Development Fund 25	895,650	-	-
TWC Skills Development Fund 26	1,000,000	-	-
TWC Skills for Small Business	10,000	14,700	-
TX Grant I Renewal Yr Curr Yr	15,000	-	-
TX Migrant Council	700	-	-
TX Nat'l Guard Tuit Assist Program	5,364	-	4,000
TX Tomorrow Fund	82,700	66,000	66,000
VA Chapter 33	1,174,200	1,113,800	1,283,000
Valley Scholars-Fundraising	40,000	77,000	80,000
Valley Scholars-Scholarships	70,000	100,000	105,000
Valley View ISD	25,300	35,000	30,000
Vanguard Academy	23,400	38,000	38,000
Ventanilla de Orientacion Educativa	-	-	100
Veterans Chapter 31	250,000	300,000	270,000
Veterans Chapter 31 CPWE	2,800	6,000	6,000
Veteran's Chpt 31 Cost Allowance	7,900	10,900	10,900
Veteran's Memorial Scholarship	3,728	3,000	2,000
Veterans Tuition Assistance	3,000	25,000	28,500
Vets Ch 33 - CPE	-	4,000	4,000
Victoria Memorial Scholarship	4,400	1,500	2,800
VIDA - ACE II	92,000	-	-
VIDA - ACE III	183,401	240,801	97,801
VIDA - ACE IV	-	-	99,500
VIDA - Alamo	6,500	6,000	8,500
VIDA - Alamo EDC	-	-	13,050
VIDA - Arnold	52,500	-	-
VIDA - Brownsville	8,200	2,400	21,000
VIDA - City of Edinburg	44,000	-	-
VIDA - City of Mercedes	17,100	26,000	30,500
VIDA - City of Mercedes EDC	5,200	4,000	20,650
VIDA - CPWE	6,200	6,000	6,000
VIDA - Greater TX Foundation	-	6,500	80,000
VIDA - Hidalgo	89,200	100,000	115,000
VIDA - La Feria	1,100	250	1,000

# South Texas College

## Restricted Fund

### Detail of Revenues by Source

#### Comparison of Previous Fiscal Years with Fiscal Year Ending August 31, 2021

Fund	FY '19 Budget	FY '20 Budget (As Amended)	FY '21 Budget
VIDA - Meadows Foundation	-	50,000	20,000
VIDA - Pharr	52,100	60,000	55,000
VIDA - Raul Tijerina Foundation	-	-	8,000
VIDA - Raymondville EDC	2,900	-	-
VIDA - Self Suff McAllen Fund	286,900	270,000	280,000
VIDA - The Moody Foundation	-	-	25,000
VIDA - TV2	1,100	-	-
VIDA - TVC3 Vet	-	30,000	30,000
VIDA - United Way of So Cameron	-	-	6,000
VIDA - VB Lagacy Foundation 19-20	-	-	8,000
VIDA - VDAVBL Valley Bap Legacy Found	14,100	-	-
VIDA - Weslaco EDC	19,200	22,000	56,000
Weslaco EDC	-	100,000	13,434
Weslaco ISD	42,900	34,000	18,000
WFS Apprenticeship Texas Expansion	-	173,471	-
WFS/STC Agreement	-	-	167,770
WIA - NEG Job Driven	2,280	-	-
Workforce Solutions IAM	-	-	13,500
<b>Total Revenues</b>	<b>\$ 80,979,938</b>	<b>\$ 95,415,543</b>	<b>\$ 84,404,264</b>



# SOUTH TEXAS COLLEGE

This page intentionally left blank.



**South Texas College**  
**Restricted Fund**  
**Detail of Expenditures by Classification and Fund**  
**Budget for Fiscal Year 2020 - 2021**

<b>Fund</b>	<b>Salaries</b>	<b>Benefits</b>	<b>Operating</b>
<b>Expenditures</b>			
15th STC Anniversary Recognition	\$ -	\$ -	\$ 15,083
2013 Leah Meyer Austin Award	-	-	-
3rd Party RCPSE	-	-	-
3rd Party - CPE	-	-	-
AAWCC Scholarship	-	-	-
Adult Learner Academy	13,900	23,000	-
Americorp National Service	-	-	-
AT&T Foundation - BAT Scholarship	-	-	-
Barnes & Noble General Scholarship	-	-	-
BAT Scholarship	-	-	-
BBVA Compass Foundation	-	-	15,000
Border Security Training Center	-	-	78,318
Border Texan of the Year Funds	-	-	-
Border Texan Starr Cnty Scholarship	-	-	-
Cambria Changing Lives Scholarship	-	-	-
CARES Act HEERF - MSI	-	-	-
Carl Perkins Basic	916,000	274,800	321,200
Carl Perkins Leadership ACE - IT	78,100	11,500	15,600
CCAMPIS	-	-	12,000
Charles Robison Scholarship	-	-	-
Child Care Quality Training Conferences	-	-	10,000
CHOC Scholarship	-	-	-
City of McAllen 23	1,381	414	-
City of McAllen 24	163,000	48,900	13,500
Cnty Hidalgo Community Service Agen	-	-	-
College Readiness and Success Completion	95,000	14,060	7,652
College Readiness Initiatives	-	-	5,000
Communities Foundation	-	-	69,000
Community Health Project	18,000	5,400	7,433
Continuous Improvements Grant	29,486	4,335	9,090
Constancia G. Oliva Scholarship	-	-	-
CPE La Joya ISD	-	-	-
CPE McAllen ISD	-	-	-
CPE Rio Grande City CISD	-	-	-
CPE Sharyland ISD	-	-	-
CPE Texas Workforce Commission	-	-	-
CPWE - Materials	-	-	2,700
Criminal Justice Scholarship	-	-	-
Diesel Technology Scholarship	-	-	-
Donna Independent School District	-	-	-
Dr. John F. Carroll Drama Scholarship	-	-	10,000
Dr. Ramiro Casso Scholarship	-	-	-
Early Childhood Child Dev't Schlrs	-	-	-

**South Texas College**  
**Restricted Fund**  
**Detail of Expenditures by Classification and Fund**  
**Budget for Fiscal Year 2020- 2021**

(Continued)

Travel	Capital	Scholarships	Total
\$ -	\$ -	\$ -	\$ 15,083
-	-	750	750
-	-	5,000	5,000
-	-	6,000	6,000
-	-	2,000	2,000
-	-	-	36,900
-	-	10,800	10,800
-	-	25	25
-	-	15,000	15,000
-	-	250	250
-	-	-	15,000
-	-	-	78,318
-	-	37,690	37,690
-	-	20,000	20,000
-	-	1,000	1,000
-	-	1,255,089	1,255,089
10,000	278,000	-	1,800,000
65,650	-	-	170,850
-	-	-	12,000
-	-	3,498	3,498
-	-	-	10,000
-	-	2,250	2,250
1,328	-	20,413	23,537
15,000	-	230,000	470,400
-	-	4,500	4,500
-	-	-	116,712
-	-	-	5,000
1,000	-	-	70,000
-	-	-	30,833
-	-	-	42,911
-	-	750	750
-	-	40,000	40,000
-	-	90,000	90,000
-	-	101,000	101,000
-	-	5,000	5,000
-	-	200	200
-	-	-	2,700
-	-	1,050	1,050
-	-	3,000	3,000
-	-	30,000	30,000
-	-	-	10,000
-	-	4,900	4,900
-	-	4,900	4,900

**South Texas College**  
**Restricted Fund**  
**Detail of Expenditures by Classification and Fund**  
**Budget for Fiscal Year 2020 - 2021**

<b>Fund</b>	<b>Salaries</b>	<b>Benefits</b>	<b>Operating</b>
Edcouch-Elsa Independent School Dist	-	-	-
Edinburg CISD	-	-	-
Edinburg EDC	-	-	-
Elide Lee Scholarship Fund	-	-	-
Encore Capital Grp Comm College Sch	-	-	-
End. Glen & Rita Roney Scholarship	-	-	-
English Scholarship	-	-	-
Experience Exceptional Scholarship	-	-	-
F&S Donations for Stdnt Scholarship	-	-	-
Federal College Work Study	-	-	-
Federal CWS Allowance	-	-	-
Federal Pell	-	-	-
Federal Pell Allowance	-	-	-
Federal SEOG - Current Year	-	-	-
Gabriel "Spiffy 32" Ramirez Scholars	-	-	-
Gene Haas Scholarship	-	-	-
General Scholar Fund - Donation	-	-	-
Genrl Scholar - De Los Santos Endowment	-	-	-
Gloria Fitch Scholarship	-	-	-
Gloria Kenison Memorial Scholarship	-	-	-
Gral Scholarship 3rd Party Agency	-	-	-
Harold W McGraw Jr. Prize	-	-	50,000
HDJT Edinburg	-	-	11,172
HEERF Cares Act - Student	-	-	-
Hidalgo Co. Scholarship	-	-	-
Hidalgo County Headstart	-	-	-
Hidalgo ISD	-	-	-
Hidalgo ISD Training	-	-	-
High School Equivalency Program	96,648	28,994	120,063
Interest Income	-	-	6,051
Inventors and Entrepreneur Collaboration	500	155	-
IS&P Adm Professionals' Scholarship	-	-	-
ITED/IAM Scholarship Fund	-	-	-
ITED Sustainability	599,993	146,734	266,490
Jeremy McLeash Scholarship Fund	-	-	-
Jesse Trevino Second Chance Scholarship	-	-	-
John Wright Burger King	-	-	-
Juan Diego Academy	-	-	-
Karen Wilson-Nursing Scholarship	-	-	-
Kathleen A. Pavlisko Scholarship	-	-	-
Kennedy Memorial Foundation Scholarship	-	-	-
Kent Biel Automotive Scholarship	-	-	-
La Joya Independent School District	-	-	-
La Villa Independent School District	-	-	-

**South Texas College**  
**Restricted Fund**  
**Detail of Expenditures by Classification and Fund**  
**Budget for Fiscal Year 2020- 2021**

(Continued)

<b>Travel</b>	<b>Capital</b>	<b>Scholarships</b>	<b>Total</b>
-	-	6,000	6,000
-	-	37,000	37,000
-	-	73,260	73,260
-	-	1,500	1,500
-	-	500	500
-	-	6,000	6,000
-	-	500	500
-	-	20,000	20,000
-	-	15,000	15,000
-	-	700,000	700,000
-	-	7,000	7,000
-	-	58,000,000	58,000,000
-	-	72,000	72,000
-	-	700,000	700,000
-	-	1,000	1,000
-	-	20,000	20,000
-	-	1,050	1,050
-	-	1,200	1,200
-	-	8,250	8,250
-	-	9,000	9,000
-	-	95,000	95,000
-	-	-	50,000
-	-	-	11,172
-	-	5,638,399	5,638,399
-	-	10,000	10,000
-	-	27,700	27,700
-	-	9,000	9,000
-	-	6,500	6,500
-	-	120,000	365,706
-	-	-	6,051
-	-	-	655
-	-	375	375
-	-	500	500
9,000	-	-	1,022,217
-	-	5,500	5,500
-	-	3,000	3,000
-	-	25	25
-	-	3,000	3,000
-	-	5,500	5,500
-	-	300	300
-	-	15,000	15,000
-	-	27,000	27,000
-	-	63,000	63,000
-	-	6,500	6,500

**South Texas College**  
**Restricted Fund**  
**Detail of Expenditures by Classification and Fund**  
**Budget for Fiscal Year 2020 - 2021**

<b>Fund</b>	<b>Salaries</b>	<b>Benefits</b>	<b>Operating</b>
Lacks Employee & Dependent Scholarship	-	-	-
LRGVWDB WIA (Adult)	-	-	-
LRGVWDB WIA (Dislocated Worker)	-	-	-
LRGVWDB WIA (Youth)	-	-	-
LRGVWDB-WIA-TAA DW	-	-	-
LRGVWDB-WIA-TAA DW CPWE	-	-	-
Luis Alberto Gomez Scholarship	-	-	-
Maudie Mary Finney Memorial Scholarship	-	-	-
McAllen ISD	-	-	-
MEDA Scholarship	-	-	5,000
Memorial Garden Fundraising	-	-	25,446
Mercedes ISD	-	-	-
Mesteño Scholarship Fund	-	-	-
MET Trainings Other	-	-	-
MET Medical Office Specialist	-	-	-
Mexican Consulate	-	-	-
Military Spouse Career Adv Accts	-	-	-
Mission CISD	-	-	-
Mission EDC College Readiness	-	-	-
Monte Alto ISD	-	-	-
Nadia & Lauren Lopez Memorial Schol	-	-	-
NAH College Success Scholarship	-	-	-
NAH Student Emergency Funds Scholarship	-	-	-
NASA Scholarship	-	-	100
Noble Charities Scholarship	-	-	-
NSF Six S Academy	45,774	7,011	1,500
Nursing Shortage Reduction Program-Regular	60,422	16,500	6,106
Oratory Athenaum Preparatory	-	-	-
PEO Scholarship	-	-	-
Pepsi - General Scholarship	-	-	-
Perkins Reserve (PSJA)	32,350	9,705	-
Pharr San Juan Alamo ISD	-	-	-
Physical Sci & Engr Dept Schlsp	-	-	1,500
PMTD (Woodcrafters Project)	-	-	500
Political Science Dept Scholarship	-	-	-
Premier High Schools	-	-	-
Professional Nursing Shortage Reduction Program-Under 70	250,000	75,000	84,309
Progreso ISD	-	-	-
PSJA ISD Training	-	-	-
Psychology Scholarship Fund	-	-	-
Quilting Society Scholarship	-	-	-
Radiology Program Donation	-	-	500
Ramanujam Scholarship	-	-	-
Retirement Allo Remn	-	-	27,984

**South Texas College**  
**Restricted Fund**  
**Detail of Expenditures by Classification and Fund**  
**Budget for Fiscal Year 2020- 2021**

(Continued)

<b>Travel</b>	<b>Capital</b>	<b>Scholarships</b>	<b>Total</b>
-	-	250	250
-	-	100,000	100,000
-	-	3,000	3,000
-	-	21,482	21,482
-	-	7,100	7,100
-	-	3,500	3,500
-	-	50	50
-	-	13,800	13,800
-	-	33,000	33,000
-	-	175,000	180,000
-	-	-	25,446
-	-	32,000	32,000
-	-	10,000	10,000
-	-	30,000	30,000
-	-	90,000	90,000
-	-	100	100
-	-	7,820	7,820
-	-	60,000	60,000
-	-	6,000	6,000
-	-	4,500	4,500
-	-	2,500	2,500
-	-	1,875	1,875
-	-	100	100
-	-	-	100
-	-	6,500	6,500
6,754	-	97,750	158,789
-	-	-	83,028
-	-	200	200
-	-	150	150
-	-	27,760	27,760
-	-	-	42,055
-	-	110,000	110,000
-	-	-	1,500
-	-	-	500
-	-	2,000	2,000
-	-	1,000	1,000
-	-	-	409,309
-	-	20,000	20,000
-	-	120,000	120,000
-	-	1,500	1,500
-	-	12,000	12,000
-	-	-	500
-	-	350	350
-	-	-	27,984

**South Texas College**  
**Restricted Fund**  
**Detail of Expenditures by Classification and Fund**  
**Budget for Fiscal Year 2020 - 2021**

<b>Fund</b>	<b>Salaries</b>	<b>Benefits</b>	<b>Operating</b>
Rio Grande CISD	-	-	-
Rio South Texas	36,400	15,600	75,000
Roma Independent School District	-	-	-
Royal Technologies Corp Scholarship	-	-	-
Saint Gorbain Corp. Gift	-	-	1,470
Samuel I Hernandez Sch	-	-	-
San Isidro ISD	-	-	-
Senator Hinojosa Scholarship	-	-	-
Sharyland ISD	-	-	-
Skills Development Fund 28	44,216	13,074	17,772
Skills Development Fund 29	75,000	22,500	80,000
So Tx Health System NAH Scholarship	-	-	-
So Tx Precision Manufacturing Sch	-	-	-
Sociology, Anthropology, Social Wor	-	-	-
South Texas Academic Rising Scholarship	-	-	-
South Texas ISD	-	-	-
Speech Competition	-	-	50
Starr Campus Donation	-	-	2,220
Starr Cnty-Recognition Ceremon-Rest	-	-	2
Starr Psychology Club Scholarship	-	-	-
State Certified Educational Aide Sch	-	-	-
STC Alumni and Friends-Scholarship	-	-	-
STC Faculty Sch Fund	-	-	-
STC Student Assitance Fund	-	-	-
STHS-McAllen Med Cen Foundation Sch	-	-	-
Strengthening Guided Pathways	25,500	3,774	-
TAB-BASOL/TMG	2,550	377	-
TAB-Medical and Health Service Management	39,150	11,745	-
TAB-UTRGV	14,100	3,760	-
TAEYC	-	-	-
TAPPA, CAPP, & APPA Conferences	-	-	-
TDA Child and Adult Care Food Program	-	-	2,000
TEOG Initial - Current Year	-	-	-
TEOG Renewal - Current Year	-	-	-
Texas College Work Study	-	-	-
Texas Tuition Promise Fund	-	-	-
Texas Workforce Commission	-	-	-
TexPREP Program - Hidalgo ISD	20,640	1,500	2,000
TexPREP Program - PSJA ISD	20,640	1,500	2,000
TexPREP Program - Roma ISD	20,640	1,500	2,000
TexPREP Program - Weslaco ISD	20,640	1,500	2,000
The Dream. US Scholarship	-	-	-
The Institute for Advanced Manufacturing	-	-	-
Third Party Local Fund	-	-	-

**South Texas College**  
**Restricted Fund**  
**Detail of Expenditures by Classification and Fund**  
**Budget for Fiscal Year 2020- 2021**

(Continued)

<b>Travel</b>	<b>Capital</b>	<b>Scholarships</b>	<b>Total</b>
-	-	25,000	25,000
-	187,150	-	314,150
-	-	30,000	30,000
-	-	14,000	14,000
-	-	-	1,470
-	-	500	500
-	-	1,000	1,000
-	-	2,250	2,250
-	-	40,000	40,000
-	-	111,456	186,518
-	47,750	300,000	525,250
-	-	31,000	31,000
-	-	4,500	4,500
-	-	2,000	2,000
-	-	46,750	46,750
-	-	34,000	34,000
-	-	-	50
-	-	-	2,220
-	-	-	2
-	-	1,000	1,000
-	-	16,500	16,500
-	-	9,000	9,000
-	-	800	800
-	-	4,500	4,500
-	-	49,000	49,000
726	-	-	30,000
-	-	-	2,927
-	-	-	50,895
-	-	-	17,860
-	-	1,600	1,600
688	-	-	688
-	-	-	2,000
-	-	1,638,868	1,638,868
-	-	1,092,578	1,092,578
-	-	136,000	136,000
-	-	38,000	38,000
-	-	69,000	69,000
2,860	-	-	27,000
2,860	-	-	27,000
2,860	-	-	27,000
2,860	-	-	27,000
-	-	35,000	35,000
-	-	100,000	100,000
-	-	68,000	68,000



**South Texas College**  
**Restricted Fund**  
**Detail of Expenditures by Classification and Fund**  
**Budget for Fiscal Year 2020 - 2021**

<b>Fund</b>	<b>Salaries</b>	<b>Benefits</b>	<b>Operating</b>
TPEG CPWE	-	-	-
TPEG ITED	-	-	-
TPEG Non Resident Curr Yr	-	-	-
TPEG Resident Curr Yr	-	-	-
TPEG - NAH	-	-	-
Transfer - Unrestricted - ITED	-	-	-
Truth Initiative Respiratory Club	619	70	5,541
TWC Ability to Benefit-Pell	1,324	343	29,567
TWC Accelarate Texas IV	11,300	3,390	31,796
TWC Self Sufficiency Fund	4,223	1,267	5,250
TWC Skills 27 Partnership with RGV	45,619	13,686	-
TX Natl Guard Tuit Assist Prgm	-	-	-
TX Tomorrow Fund	-	-	-
VA Chapter 33	-	-	-
Valley Scholars-Fundraising	-	-	80,000
Valley Scholars-Scholarships	-	-	-
Valley View ISD	-	-	-
Vanguard Academy	-	-	-
Ventanilla de Orientacion Educativa	-	-	-
Veterans Chapter 31	-	-	-
Veterans Chapter 31 CPWE	-	-	-
Veteran's Chpt 31 Cost Allowance	-	-	-
Veteran's Memorial Scholarship	-	-	-
Veterans Tuition Assistance	-	-	-
Vets Ch 33 - CPE	-	-	-
Victoria Memorial Scholarship	-	-	-
VIDA - ACE III	-	-	-
VIDA - ACE IV	-	-	-
VIDA - Alamo	-	-	-
VIDA - Alamo EDC	-	-	-
VIDA - Brownsville	-	-	-
VIDA - City of Mercedes	-	-	-
VIDA - City of Mercedes EDC	-	-	-
VIDA - CPWE	-	-	-
VIDA - Greater TX Foundation	-	-	-
VIDA - Hidalgo	-	-	-
VIDA - La Feria	-	-	-
VIDA - Meadows Foundation	-	-	-
VIDA - Pharr	-	-	-
VIDA - Raul Tijerina Foundation	-	-	-
VIDA - Self Suff McAllen Fund	-	-	-
VIDA - The Moody Foundation	-	-	-
VIDA - TVC3 Vet	-	-	-
VIDA - United Way of So Cameron	-	-	-

**South Texas College**  
**Restricted Fund**  
**Detail of Expenditures by Classification and Fund**  
**Budget for Fiscal Year 2020- 2021**

(Continued)

<b>Travel</b>	<b>Capital</b>	<b>Scholarships</b>	<b>Total</b>
-	-	245,700	245,700
-	-	211,900	211,900
-	-	33,000	33,000
-	-	1,629,769	1,629,769
-	-	1,500	1,500
-	-	865,581	865,581
-	-	-	6,229
2,650	-	37,824	71,707
-	-	101,465	147,951
-	-	-	10,740
-	-	-	59,305
-	-	4,000	4,000
-	-	66,000	66,000
-	-	1,283,000	1,283,000
-	-	-	80,000
-	-	105,000	105,000
-	-	30,000	30,000
-	-	38,000	38,000
-	-	100	100
-	-	270,000	270,000
-	-	6,000	6,000
-	-	10,900	10,900
-	-	2,000	2,000
-	-	28,500	28,500
-	-	4,000	4,000
-	-	2,800	2,800
-	-	97,801	97,801
-	-	99,500	99,500
-	-	8,500	8,500
-	-	13,050	13,050
-	-	21,000	21,000
-	-	30,500	30,500
-	-	20,650	20,650
-	-	6,000	6,000
-	-	80,000	80,000
-	-	115,000	115,000
-	-	1,000	1,000
-	-	20,000	20,000
-	-	55,000	55,000
-	-	8,000	8,000
-	-	280,000	280,000
-	-	25,000	25,000
-	-	30,000	30,000
-	-	6,000	6,000

**South Texas College**  
**Restricted Fund**  
**Detail of Expenditures by Classification and Fund**  
**Budget for Fiscal Year 2020 - 2021**

<b>Fund</b>	<b>Salaries</b>	<b>Benefits</b>	<b>Operating</b>
VIDA-VB Legacy Foundation 19-20	-	-	-
VIDA - Weslaco EDC	-	-	-
Weslaco EDC	-	-	1,634
Weslaco ISD	-	-	-
Workforce Solutions IAM	-	-	-
WFS/STC Agreement	39,074	16,746	86,950
<b>Total Expenditures</b>	<b>\$ 2,822,189</b>	<b>\$ 778,840</b>	<b>\$ 1,625,548</b>

**South Texas College**  
**Restricted Fund**  
**Detail of Expenditures by Classification and Fund**  
**Budget for Fiscal Year 2020- 2021**

(Continued)

<b>Travel</b>	<b>Capital</b>	<b>Scholarships</b>	<b>Total</b>
-	-	8,000	8,000
-	-	56,000	56,000
-	-	11,800	13,434
-	-	18,000	18,000
-	-	13,500	13,500
-	-	25,000	167,770
<b>\$ 124,236</b>	<b>\$ 512,900</b>	<b>\$ 78,540,552</b>	<b>\$ 84,404,264</b>



# SOUTH TEXAS COLLEGE

This page intentionally left blank.

# **Endowment Fund**

**South Texas College**  
**Endowment Fund**  
**Summary of Revenues, Expenditures and Transfers - Budget and Actual**  
**Comparison of Previous Fiscal Years with Fiscal Year Ending August 31, 2021**

<b>Revenues</b>	<b>FY '19 Budget</b>	<b>FY '19 Actual</b>	<b>FY '20 Budget</b>	<b>FY '20 Estimated*</b>	<b>FY '21 Budget</b>
Investment Interest Income	\$ 5,820	\$ 9,182	\$ 6,000	\$ 6,250	\$ 1,800
Other Funding Sources					
Carryover-Interest	-	3,026	13	3,000	10
<b>Total Endowment Revenue</b>	<b>\$ 5,820</b>	<b>\$ 12,208</b>	<b>\$ 6,013</b>	<b>\$ 9,250</b>	<b>\$ 1,810</b>
<b>Expenditures/Transfers</b>	<b>FY '19 Budget</b>	<b>FY '19 Actual</b>	<b>FY '20 Budget</b>	<b>FY '20 Estimated*</b>	<b>FY '21 Budget</b>
Non-Mandatory Transfers	\$ 5,809	\$ 12,180	\$ 6,000	\$ 9,235	\$ 1,800
Fund Balance Addition	11	28	13	15	10
<b>Total Expenditures/Transfers</b>	<b>\$ 5,820</b>	<b>\$ 12,208</b>	<b>\$ 6,013</b>	<b>\$ 9,250</b>	<b>\$ 1,810</b>
<b>Ending Cash and Investment Balance</b>	<b>\$ 339,483</b>	<b>\$ 339,500</b>	<b>\$ 339,513</b>	<b>\$ 339,515</b>	<b>\$ 339,525</b>

\* Amounts are estimated. Actual amounts will be available after fiscal year end and completion of audit.



# SOUTH TEXAS COLLEGE

This page intentionally left blank.



# **Plant Fund Unexpended**

**South Texas College**  
**Plant Fund**  
**Unexpended - Construction Fund - Non-Bond and Bond**  
**Summary of Revenues, Expenditures and Transfers - Budget and Actual**  
**Comparison of Previous Fiscal Years with Fiscal Year Ending August 31, 2021**

**Revenues and Transfers Summary - Budget and Actual\*\***

<b>Revenues/Transfers**</b>	<b>FY '19 Budget (As Amended)</b>	<b>FY '19 Actual</b>	<b>FY '20 Budget</b>	<b>FY '20 Estimated *</b>	<b>FY '21 Budget</b>
Interest	\$ 282,688	\$ 899,598	\$ 500,000	\$ 694,572	\$ 282,547
Interest Limited Tax Bonds, Series 2015	-	6,260	-	-	-
Transfer In Bond 2015 - New Construction	-	719,525	-	-	-
Transfer In - Unrestricted Fund	5,000,000	4,000,000	2,000,000	2,000,000	2,000,000
Transfer In - Unrestricted Fund _ Continuing Ed	-	1,000,000	1,000,000	1,350,000	-
Regional Ctr for Public Safety Excellence _ Pharr ISD	290,000	290,000	-	-	-
Fund Balance Deduction	12,460,740	-	13,537,045	-	8,699,927
Fund Balance Deduction _ Limited Tax Bonds, Series 2014 and 2015	2,639,420	20,407	-	-	-
<b>Total Revenues/Transfers**</b>	<b>\$ 20,672,848</b>	<b>\$ 6,935,790</b>	<b>\$ 17,037,045</b>	<b>\$ 4,044,572</b>	<b>\$ 10,982,474</b>

**Expenditures Summary - Budget and Actual\*\***

<b>Expenditures**</b>	<b>FY '19 Budget (As Amended)</b>	<b>FY '19 Actual</b>	<b>FY '20 Budget</b>	<b>FY '20 Estimated *</b>	<b>FY '21 Budget</b>
Projected Draws for Approved Projects	\$ 16,033,428	\$ 3,409,087	\$ 17,037,045	\$ 1,779,697	\$ 10,982,474
Projected Draws for Approved Projects _ Bond Series 2014 and 2015	2,639,420	746,192	-	-	-
Fund Balance Addition _ Transfer In	2,000,000	-	-	-	-
Fund Balance Addition	-	2,780,511	-	2,264,875	-
<b>Total Expenditures**</b>	<b>\$ 20,672,848</b>	<b>\$ 6,935,790</b>	<b>\$ 17,037,045</b>	<b>\$ 4,044,572</b>	<b>\$ 10,982,474</b>
<b>Ending Fund Cash and Investment Balance _ New Construction</b>		<b>39,194,239</b>		<b>41,459,114</b>	<b>32,759,187</b>
<b>Ending Fund Cash and Investment Balance _ Bond Series 2014 and 2015</b>		<b>-</b>		<b>-</b>	<b>-</b>
<b>Ending Fund Cash and Investment Balance</b>		<b>\$ 39,194,239</b>		<b>\$ 41,459,114</b>	<b>\$ 32,759,187</b>

\*Amounts are estimated. Actual amounts will be available after fiscal year end and completion of audit.

\*\* Includes Fund Balance Addition/Deduction.

The plant fund group consists of four separate funds, including funds set aside for the acquisition of physical properties for institutional purposes but unexpended at the date of reporting.

# South Texas College

## Plant Fund

### Unexpended - Construction Fund - Non-Bond

#### Detail of Projected Expenditures for Approved Construction Projects Project Budget with Projected Expenditures for Fiscal Year Ending August 31, 2021

Construction Project		Fund	Project Budget	Previous Expenditures*	Projected Expenditures 2021
<b>Pecan Campus - Previous Fiscal Years Projects</b>					
Pecan Business and Science Bldg. G Classroom Renovation	Construction	911182	188,000	-	188,000
Pecan Business and Science Bldg. G Classroom Renovation	Design	911183	12,000	4,000	8,000
Pecan Business and Science Bldg. G Classroom Renovation	Miscellaneous	911184	6,703	2,003	4,700
Pecan Business and Science Bldg. G Classroom Renovation	FFE	911185	67,000	-	67,000
Pecan Sand Volleyball Courts	Construction	912925	134,649	91,649	43,000
Pecan Sand Volleyball Courts	Design	912926	17,375	16,375	1,000
Pecan Sand Volleyball Courts	Miscellaneous	912927	4,695	4,245	450
Pecan Library Bldg. F Renovation	Construction	912942	500,000	-	500,000
Pecan Library Bldg. F Renovation	Design	912943	971,344	129,078	842,266
Pecan Library Bldg. F Renovation	Miscellaneous	912944	100,703	703	100,000
Pecan Student Activities Bldg. H Cafeteria Renovation	FFE	912992	168,619	18,619	150,000
Pecan Student Activities Bldg. H Cafeteria Renovation	Technology	912993	48,000	2,373	45,627
Pecan Information Technology Bldg. M Office and Work Space Renovation	Construction	912994	410,000	35,000	375,000
Pecan Information Technology Bldg. M Office and Work Space Renovation	Design	912995	43,200	27,265	15,935
Pecan Information Technology Bldg. M Office and Work Space Renovation	Miscellaneous	912996	5,098	4,098	1,000
Pecan Information Technology Bldg. M Office and Work Space Renovation	FFE	912997	80,000	-	80,000
Pecan Information Technology Bldg. M Office and Work Space Renovation	Technology	912998	27,500	-	27,500
<b>Pecan Campus - Proposed New Projects</b>					
Pecan Student Services Bldg. K Renovation	Design	912921	25,000	-	25,000
Pecan Student Services Bldg. K Renovation	Miscellaneous	912922	1,200	-	1,200
Pecan New Continuing Education Building	Design	917001	355,500	-	355,500
Pecan New Continuing Education Building	Miscellaneous	917003	42,660	-	42,660
<b>Pecan Plaza Campus - Previous Fiscal Years Projects</b>					
Pecan Plaza West Bldg. C Kinesiology Renovation	Construction	911190	122,000	-	122,000
Pecan Plaza West Bldg. C Kinesiology Renovation	Design	911191	12,200	2,200	10,000
Pecan Plaza West Bldg. C Kinesiology Renovation	Miscellaneous	911192	7,435	2,897	4,538
Pecan Plaza West Bldg. C Kinesiology Renovation	FFE	911193	6,000	-	6,000
<b>Pecan Plaza Campus - Proposed New Projects</b>					
Pecan Plaza Human Resources Bldg. A Renovation	Construction	911195	75,000	-	75,000
Pecan Plaza Human Resources Bldg. A Renovation	Design	911196	7,500	-	7,500
Pecan Plaza Human Resources Bldg. A Renovation	Miscellaneous	911197	4,000	-	4,000
Pecan Plaza Human Resources Bldg. A Renovation	FFE	911198	27,250	-	27,250
Pecan Plaza Human Resources Bldg. A Renovation	Technology	911199	27,250	-	27,250
Pecan Plaza Human Resources Bldg. A Entry Courtyard Improvements	Construction	917006	15,000	-	15,000
Pecan Plaza Human Resources Bldg. A Entry Courtyard Improvements	Miscellaneous	917008	1,000	-	1,000

# South Texas College

## Plant Fund

### Unexpended - Construction Fund - Non-Bond

#### Detail of Projected Expenditures for Approved Construction Projects Project Budget with Projected Expenditures for Fiscal Year Ending August 31, 2021

Construction Project		Fund	Project Budget	Previous Expenditures*	Projected Expenditures 2021
<b>Mid Valley Campus - Previous Fiscal Years Projects</b>					
Mid Valley Student Union Bldg. F Renovation	Construction	912687	256,845	41,879	214,966
Mid Valley Student Union Bldg. F Renovation	Design	912688	24,275	14,275	10,000
Mid Valley Student Union Bldg. F Renovation	Miscellaneous	912689	4,203	2,503	1,700
Mid Valley Student Union Bldg. F Renovation	FFE	912690	32,000	-	32,000
Mid Valley Student Union Bldg. F Renovation	Technology	912691	50,000	-	50,000
Mid Valley Center for Learning Excellence Bldg. A Conversion of Cafeteria to CLE	Construction	912692	132,000	-	132,000
Mid Valley Center for Learning Excellence Bldg. A Conversion of Cafeteria to CLE	Design	912693	14,200	-	14,200
Mid Valley Center for Learning Excellence Bldg. A Conversion of Cafeteria to CLE	Miscellaneous	912694	4,008	2,008	2,000
Mid Valley Center for Learning Excellence Bldg. A Conversion of Cafeteria to CLE	FFE	912695	50,000	-	50,000
Mid Valley Center for Learning Excellence Bldg. A Conversion of Cafeteria to CLE	Technology	912696	25,000	-	25,000
<b>Technology Campus - Previous Fiscal Years Projects</b>					
Tech Emerging Technologies Bldg. A & Advanced Technical Careers Bldg. B Renovations	Design	911307	128,000	-	128,000
Tech Emerging Technologies Bldg. A & Advanced Technical Careers Bldg. B Renovations	Miscellaneous	911308	23,320	820	22,500
<b>Nursing &amp; Allied Health Campus - Previous Fiscal Years Projects</b>					
Nursing Allied Health East Bldg. A Student Services Renovation	Construction	911055	247,000	-	247,000
Nursing Allied Health East Bldg. A Student Services Renovation	Design	911056	25,500	18,730	6,770
Nursing Allied Health East Bldg. A Student Services Renovation	Miscellaneous	911057	4,116	2,616	1,500
Nursing Allied Health East Bldg. A Student Services Renovation	FFE	911058	75,000	-	75,000
Nursing Allied Health East Bldg. A Student Services Renovation	Technology	911059	45,000	-	45,000
Nursing Allied Health West Entry Campus Sign	Construction	911698	75,000	15,000	60,000
<b>Starr County Campus - Previous Fiscal Years Projects</b>					
Starr Student Services Bldg. G Renovation	Construction	912750	188,000	-	188,000
Starr Student Services Bldg. G Renovation	Design	912751	14,380	10,880	3,500
Starr Student Services Bldg. G Renovation	FFE	912753	30,000	-	30,000
Starr Student Services Bldg. G Renovation	Technology	912754	15,000	-	15,000
Starr Workforce Center Bldg. D Welding Expansion	Construction	912768	150,000	-	150,000
Starr Workforce Center Bldg. D Welding Expansion	Design	912769	15,000	-	15,000
Starr Workforce Center Bldg. D Welding Expansion	Miscellaneous	912770	5,820	820	5,000
Starr Workforce Center Bldg. D Welding Expansion	FFE	912771	50,000	-	50,000
Starr Workforce Center Bldg. D Welding Expansion	Technology	912772	10,000	-	10,000
<b>Regional Center for Public Safety Excellence - Previous Fiscal Years Projects</b>					
RCPSE Target Range	Design	911793	276,972	-	276,972
RCPSE Target Range	Miscellaneous	911791	19,120	4,120	15,000
RCPSE Canopy for Safety Training Vehicles	Construction	911797	245,000	-	245,000
RCPSE Canopy for Safety Training Vehicles	Design	911798	24,500	-	24,500
RCPSE Canopy for Safety Training Vehicles	Miscellaneous	911799	10,000	-	10,000
RCPSE Canopy for Safety Training Vehicles	Technology	911781	6,000	-	6,000

# South Texas College

## Plant Fund

### Unexpended - Construction Fund - Non-Bond

#### Detail of Projected Expenditures for Approved Construction Projects Project Budget with Projected Expenditures for Fiscal Year Ending August 31, 2021

Construction Project		Fund	Project Budget	Previous Expenditures*	Projected Expenditures 2021
RCPSE Canopy for Students/Instructors	Construction	915501	205,000	-	205,000
RCPSE Canopy for Students/Instructors	Design	915502	20,500	-	20,500
RCPSE Canopy for Students/Instructors	Miscellaneous	915503	10,000	-	10,000
RCPSE Canopy for Students/Instructors	FFE	915529	5,500	-	5,500
RCPSE Canopy for Students/Instructors	Technology	915512	6,000	-	6,000
RCPSE Chiller Installation	Construction	915509	150,000	-	150,000
RCPSE Chiller Installation	Design	915510	15,000	-	15,000
RCPSE Chiller Installation	Miscellaneous	915511	5,000	-	5,000
RCPSE Fire Training Area	Construction	915513	300,000	-	300,000
RCPSE Fire Training Area	Design	915514	30,000	-	30,000
RCPSE Fire Training Area	Miscellaneous	915515	13,600	-	13,600
RCPSE Fire Training Area	FFE	915516	100,000	-	100,000
RCPSE Site Drainage Improvements	Construction	915545	300,000	-	300,000
RCPSE Site Drainage Improvements	Design	915546	70,000	23,745	46,255
RCPSE Site Drainage Improvements	Miscellaneous	915547	10,885	885	10,000
<b>Regional Center for Public Safety Excellence - Proposed New Projects</b>					
RCPSE Cityscape Remediation	Construction	915548	88,000	-	88,000
RCPSE Cityscape Remediation	Design	915549	23,500	-	23,500
RCPSE Cityscape Remediation	Miscellaneous	915550	18,000	-	18,000
<b>Higher Education Center La Joya - Previous Fiscal Years Projects</b>					
HECLJ Building and Wayfinding Signage	Construction	915539	50,000	15,600	34,400
HECLJ Building and Wayfinding Signage	Miscellaneous	915540	2,000	-	2,000
<b>District Wide - Previous Fiscal Years Projects</b>					
District-Wide	Land	911705	3,000,000	-	3,000,000
District-Wide Renovations and Contingencies	Construction	911704	602,925	-	602,925
District-Wide Renovations and Contingencies	Design	911715	18,541	-	18,541
District-Wide Renovations and Contingencies	Miscellaneous	911724	1,685	-	1,685
District-Wide Renovations and Contingencies	FFE	911716	14,145	-	14,145
District-Wide Renovations and Contingencies	Technology	911725	22,000	-	22,000
District-Wide Outdoor Furniture	FFE	911702	25,000	-	25,000
District-Wide Campus Master Plan	Design	911718	375,000	-	375,000
District-Wide Automatic Doors Phase IV	Construction	911735	85,000	-	85,000
District-Wide Automatic Doors Phase IV	Design	911736	8,500	-	8,500
District-Wide Automatic Doors Phase IV	Miscellaneous	911737	1,620	-	1,620
District-Wide Facility Signage	Construction	912268	49,632	-	49,632
District-Wide Removal of Existing Trees	Construction	912895	23,787	-	23,787
District-Wide Removal of Existing Trees	Miscellaneous	912897	900	-	900

**South Texas College**  
**Plant Fund**  
**Unexpended - Construction Fund - Non-Bond**  
**Detail of Projected Expenditures for Approved Construction Projects**  
**Project Budget with Projected Expenditures for Fiscal Year Ending August 31, 2021**

<b>Construction Project</b>		<b>Fund</b>	<b>Project Budget</b>	<b>Previous Expenditures*</b>	<b>Projected Expenditures 2021</b>
<b>District Wide - Proposed New Projects</b>					
District-Wide Fence Enclosures	Construction	911542	36,000	-	36,000
<b>Total Previous Fiscal Years Projects</b>			<b>10,724,502</b>	<b>494,388</b>	<b>10,230,114</b>
<b>Total Proposed New Projects</b>			<b>752,360</b>	<b>-</b>	<b>752,360</b>
<b>Total Construction Program Draws</b>			<b>\$ 11,476,862</b>	<b>\$ 494,388</b>	<b>\$ 10,982,474</b>



# SOUTH TEXAS COLLEGE

This page intentionally left blank.

# **Plant Fund**

## **Renewals/Replacements**



**South Texas College**  
**Plant Fund**  
**Renewals and Replacements Fund**  
**Summary of Revenues, Expenditures and Transfers - Budget and Actual**  
**Comparison of Previous Fiscal Years with Fiscal Year Ending August 31, 2021**

**Revenues and Transfers Summary - Budget and Actual\*\***

<b>Revenues/Transfers**</b>	<b>FY '19 Budget (As Amended)</b>	<b>FY '19 Actual</b>	<b>FY '20 Budget</b>	<b>FY '20 Estimated *</b>	<b>FY '21 Budget</b>
Transfers In - Unrestricted	\$ 1,000,000	\$ 1,000,000	\$ -	\$ -	\$ -
Fund Balance Deduction	7,121,600	635,778	7,624,000	1,244,722	4,883,890
<b>Total Revenues/Transfers**</b>	<b>\$ 8,121,600</b>	<b>\$ 1,635,778</b>	<b>\$ 7,624,000</b>	<b>\$ 1,244,722</b>	<b>\$ 4,883,890</b>

**Expenditures Summary - Budget and Actual\*\***

<b>Expenditures**</b>	<b>FY '19 Budget (As Amended)</b>	<b>FY '19 Actual</b>	<b>FY '20 Budget</b>	<b>FY '20 Estimated *</b>	<b>FY '21 Budget</b>
Renewals and Replacements Expenditures	\$ 7,121,600	\$ 1,635,778	\$ 7,624,000	\$ 1,244,722	\$ 4,883,890
Fund Balance Addition _ Transfer In Unrestricted	1,000,000	-	-	-	-
<b>Total Expenditures**</b>	<b>\$ 8,121,600</b>	<b>\$ 1,635,778</b>	<b>\$ 7,624,000</b>	<b>\$ 1,244,722</b>	<b>\$ 4,883,890</b>
<b>Ending Fund Cash and Investment Balance</b>		<b>\$ 23,388,336</b>		<b>\$ 22,143,614</b>	<b>\$ 17,259,724</b>

\* Amounts are estimated. Actual amounts will be available after fiscal year end and completion of audit.

\*\* Includes Fund Balance Addition/Deduction.

The plant fund group consists of four separate funds, including funds set aside for the renewals and replacements of institutional properties.

# South Texas College

## Plant Fund

### Renewals & Replacements Fund

#### Detail of Projected Expenditures for Approved Renewals & Replacements Projects

#### Project Budget with Projected Expenditures for Fiscal Year Ending August 31, 2021

Construction Project		Fund	Project Budget	Previous Expenditures*	Projected Expenditures 2021
<b>Mid Valley Campus - Previous Fiscal Years Projects</b>					
MV Resurfacing Northwest Drive	Construction	921246	110,000	22,000	88,000
MV Resurfacing Northwest Drive	Design	921247	10,975	9,630	1,345
MV Resurfacing Northwest Drive	Miscellaneous	921248	7,128	3,502	3,626
MV Drainage Improvements Phase I	Construction	921251	371,375	86,109	285,266
MV Drainage Improvements Phase I	Design	921252	27,500	20,500	7,000
MV Drainage Improvements Phase I	Miscellaneous	921253	15,203	4,550	10,653
MV Roofing Replacement	Construction	921250	860,000	-	860,000
MV Roofing Replacement	Design	921255	86,000	3,877	82,123
MV Roofing Replacement	Miscellaneous	921256	5,000	-	5,000
<b>Technology Campus - Previous Fiscal Years Projects</b>					
Tech Advanced Technical Careers Bldg. B Concrete Floor Repairs	Construction	921337	126,870	106,870	20,000
<b>Nursing &amp; Allied Health Campus - Previous Fiscal Years Projects</b>					
NAH East Bldg. A Westside Elevators Refurbishment	Construction	921421	150,000	-	150,000
NAH East Bldg. A Westside Elevators Refurbishment	Design	921423	8,000	-	8,000
NAH East Bldg. A Westside Elevators Refurbishment	Miscellaneous	921422	1,000	-	1,000
NAH East Bldg. A Roofing Replacement	Construction	921432	150,000	-	150,000
NAH East Bldg. A Roofing Replacement	Design	921433	11,077	969	10,108
NAH East Bldg. A Roofing Replacement	Miscellaneous	921434	5,000	-	5,000
NAH East Bldg. A Data Cabling Replacement	Construction	921437	150,000	135,000	15,000
<b>Nursing &amp; Allied Health Campus - Proposed New Projects</b>					
NAH East Bldg. A Stair Repairs and Replacement	Construction	921438	150,000	-	150,000
NAH East Bldg. A Stair Repairs and Replacement	Design	921439	15,000	-	15,000
NAH East Bldg. A Stair Repairs and Replacement	Miscellaneous	921440	4,000	-	4,000
<b>Starr County Campus - Previous Fiscal Years Projects</b>					
Starr Roofing Replacement	Construction	921518	770,000	-	770,000
Starr Roofing Replacement	Design	921519	57,323	7,754	49,569
Starr Roofing Replacement	Miscellaneous	921520	5,000	-	5,000
<b>District-Wide - Previous Fiscal Years Projects</b>					
District-Wide Irrigation System Controls Upgrade	Construction	921604	142,485	72,485	70,000
District-Wide Irrigation System Controls Upgrade	Miscellaneous	921606	1,200	-	1,200
District-Wide Fire Alarm Panel Replacement/Upgrade	Construction	921610	180,000	-	180,000
District-Wide Fire Alarm Panel Replacement/Upgrade	Miscellaneous	921612	2,500	-	2,500
District-Wide Interior LED Lighting Upgrade	Construction	921613	219,950	109,950	110,000
District-Wide Exterior Walkway LED Lighting Upgrade	Construction	921616	49,000	-	49,000
District-Wide Interior Lighting Controls Upgrade	Construction	921631	75,000	-	75,000
District-Wide Interior Lighting Controls Upgrade	Miscellaneous	921633	1,500	-	1,500
District-Wide Flooring Replacement	Construction	921634	526,391	26,391	500,000

# South Texas College

## Plant Fund

### Renewals & Replacements Fund

#### Detail of Projected Expenditures for Approved Renewals & Replacements Projects

#### Project Budget with Projected Expenditures for Fiscal Year Ending August 31, 2021

Construction Project		Fund	Project Budget	Previous Expenditures*	Projected Expenditures 2021
District-Wide Flooring Replacement	Miscellaneous	921635	5,651	1,651	4,000
District-Wide HVAC Replacement and Upgrade	Construction	921643	600,000	-	600,000
District-Wide HVAC Replacement and Upgrade	Design	921644	60,000	-	60,000
District-Wide Exterior Lighting Upgrade	Construction	921648	250,000	-	250,000
District-Wide Exterior Lighting Upgrade	Design	921649	25,000	-	25,000
District-Wide Exterior Lighting Upgrade	Miscellaneous	921650	4,000	-	4,000
District-Wide Keyless Entry Access Upgrades (IT Rooms)	Construction	921653	39,626	14,626	25,000
District-Wide Renewals & Replacements	Construction	921122	150,000	-	150,000
District-Wide Renewals & Replacements	Miscellaneous	921121	1,000	-	1,000
<b>District-Wide - Proposed New Projects</b>					
District-Wide Water Tower Logo Replacements	Construction	921654	80,000	-	80,000
<b>Total Previous Fiscal Years Projects</b>			<b>5,260,754</b>	<b>625,864</b>	<b>4,634,890</b>
<b>Total Proposed New Projects</b>			<b>249,000</b>	<b>-</b>	<b>249,000</b>
<b>Total Construction Program Draws</b>			<b>\$ 5,509,754</b>	<b>\$ 625,864</b>	<b>\$ 4,883,890</b>



# SOUTH TEXAS COLLEGE

This page intentionally left blank.

# **Plant Fund**

## **Ret. of Indebtedness**

**South Texas College**  
**Plant Fund**  
**Retirement of Indebtedness Fund**  
**Summary of Revenues, Expenditures and Transfers - Budget and Actual**  
**Comparison of Previous Fiscal Years with Fiscal Year Ending August 31, 2021**

**Revenues and Transfers Summary - Budget and Actual\*\***

<b>Revenues/Transfers</b>	<b>FY '19 Budget</b>	<b>FY '19 Actual</b>	<b>FY '20 Budget</b>	<b>FY '20 *Estimated</b>	<b>FY '21 Budget</b>
Taxes - Current	\$ 12,664,978	\$ 13,670,301	\$ 11,106,240	\$ 12,679,447	\$ 11,401,935
Taxes - Delinquent	711,003	713,745	609,614	626,965	502,176
Taxes - Penalty & Interest	480,660	462,255	388,647	392,057	315,990
Interest	389,049	420,746	200,000	335,690	80,500
Transfer In - Unrestricted Fund - Bond 2007 (MTR)	395,200	394,516	-	-	-
Fund Balance Deduction	-	-	1,500,000	-	1,500,000
<b>Total Revenues/Transfers</b>	<b>\$ 14,640,890</b>	<b>\$ 15,661,562</b>	<b>\$ 13,804,501</b>	<b>\$ 14,034,158</b>	<b>\$ 13,800,601</b>

**Expenditures Summary - Budget and Actual\*\***

<b>Expenditures**</b>	<b>FY '19 Budget</b>	<b>FY '19 Actual</b>	<b>FY '20 Budget</b>	<b>FY '20 *Estimated</b>	<b>FY '21 Budget</b>
Debt Service Payment - Bond 2014	\$ 4,962,500	\$ 4,962,500	\$ 4,958,750	\$ 4,958,750	\$ 2,899,750
Debt Service Payment - Bond 2015	7,986,106	7,986,106	8,769,606	8,769,606	8,769,106
Debt Service Payment - Bond 2020	-	-	-	-	2,055,402
Collection & Redemption Fees	76,145	62,367	76,145	56,235	76,343
Fund Balance Addition	837,989	1,872,439	-	249,567	-
<b>Total Expenditures**</b>	<b>\$ 14,640,890</b>	<b>\$ 15,661,562</b>	<b>\$ 13,804,501</b>	<b>\$ 14,034,158</b>	<b>\$ 13,800,601</b>
<b>Ending Fund Cash and Investment Balance</b>	<b>\$ 8,171,737</b>	<b>\$ 14,562,771</b>	<b>\$ 6,671,737</b>	<b>\$ 14,812,337</b>	<b>\$ 13,312,337</b>

\*Amounts are estimated. Actual amounts will be available after fiscal year end and completion of audit.

\*\* Includes Fund Balance Addition.

The plant fund group consists of four separate funds, including funds set aside for debt service charges and for the retirement of indebtedness on institutional properties.



# SOUTH TEXAS COLLEGE

This page intentionally left blank.

# **Section 140.0045**

## **Expenditures**



# South Texas College

## Summary of Local Government Code Section 140.0045 Expenditures Itemization of Certain Expenditures Required in Certain Political Subdivision Budgets\*\*

**Comparison of Previous Fiscal Year with Fiscal Year Ending August 31, 2021**

<b>Expenditures</b>	<b>FY '20 Budget</b>	<b>FY '20 Actual*</b>	<b>FY '21 Budget</b>
Total Section 140.0045 Expenditures	\$ 42,716	\$ 12,716	\$ 13,318

The budgeted and estimated expenditure amounts are included in various departmental organization budgets.

\* Amounts are estimated. Audited actual amounts will be available after fiscal year end and completion of financial audit.

\*\* Expenditures for directly or indirectly influencing or attempting to influence the outcome of legislation or administrative action, as those



# SOUTH TEXAS COLLEGE

This page intentionally left blank.

# Resolution

## **Resolution No. 2020-012**

**A RESOLUTION ADOPTING THE BUDGET OF SOUTH TEXAS COLLEGE FOR THE FISCAL YEAR BEGINNING SEPTEMBER 1, 2020 AND ENDING AUGUST 31, 2021 IN ACCORDANCE WITH THE PROVISIONS OF THE TEXAS EDUCATION CODE AND ORDERING OTHER PROVISIONS RELATED TO THE SUBJECT MATTER HEREOF.**

**BE IT ORDERED BY THE BOARD OF TRUSTEES OF SOUTH TEXAS COLLEGE, THAT:**

**SECTION I:** The Budget Estimate of revenues for South Texas College District (the “College District”) and the expenses of conducting the affairs thereof for the ensuing fiscal year beginning September 1, 2020, and ending August 31, 2021, as submitted by the President of the College, be, and the same is in all things, adopted and approved as the budget of all of the current revenues and expenses for the fiscal year beginning the 1st day of September, 2020, and ending the 31st day of August, 2021.

**SECTION II:** The amount of ad valorem taxes and revenue from other sources, as estimated by the President, is hereby appropriated out of the various Funds for the payment of operating expenses and capital outlay of the College District. A copy of the Budget Summary indicating such revenues and appropriating their expenditures is attached hereto and made a part hereof for all purposes as Exhibit “A” and shall remain on file in the Office of the President.

**SECTION III:** The sums indicated in Exhibit “A” are hereby appropriated in the Unrestricted Fund and College’s Debt Service Fund out of the current year ad valorem taxes as collected for the purposes of maintenance and operation of the College District, as applicable, and applying the interest due on the general obligation bonds, redeeming the bonds as they mature, and creating sinking funds as required by such bonds.

**SECTION IV:** All Resolutions or parts of Resolutions in conflict herewith are hereby repealed.


**SECTION V:** This Resolution shall be and remain in full force and effect as of September 1, 2020.

**SECTION VI:** If any part, or parts, of this Resolution are found to be invalid or unconstitutional by a court having competent jurisdiction, then such invalidity or unconstitutionality shall not affect the remaining parts hereof and such remaining parts shall remain in full force and effect, and to the extent this Resolution is considered severable.

**CONSIDERED, PASSED and APPROVED** this 25 day of August, 2020 at a meeting of the Board of Trustees of South Texas College District at which a quorum was present and which was held in accordance with the Texas Government Code Chapter 551.

SIGNED this 25 day of August, 2020.

**SOUTH TEXAS COLLEGE DISTRICT**

By:   
Paul R. Rodriguez, Chairman

ATTEST:

By:   
Roy De León, Secretary



SOUTH TEXAS  
COLLEGE