

# **Enrollment Forecast**

## **2021-2035**

**Texas Institutions of Higher Education**

**January 2021**

**This page has been left blank intentionally.**

Stuart W. Stedman, CHAIR  
Fred Farias III, OD, VICE CHAIR  
Ricky A. Raven, SECRETARY TO THE BOARD  
S. Javaid Anwar  
Cody C. Campbell  
Emma W. Schwartz  
R. Sam Torn  
Donna N. Williams  
Welcome Wilson Jr.  
Levi D. McClenny, STUDENT REPRESENTATIVE

Houston  
McAllen  
Sugar Land  
Midland  
Fort Worth  
El Paso  
Houston  
Arlington  
Houston  
College Station

Harrison Keller, COMMISSIONER OF HIGHER EDUCATION

### Agency Mission

The mission of the Texas Higher Education Coordinating Board (THECB) is to provide leadership and coordination for Texas higher education and to promote access, affordability, quality, success, and cost efficiency through *60x30TX*, resulting in a globally competitive workforce that positions Texas as an international leader.

### Agency Vision

The THECB will be recognized as an international leader in developing and implementing innovative higher education policy to accomplish our mission.

### Agency Philosophy

The THECB will promote access to and success in quality higher education across the state with the conviction that access and success without quality is mediocrity and that quality without access and success is unacceptable.

The THECB's core values are:

**Accountability:** We hold ourselves responsible for our actions and welcome every opportunity to educate stakeholders about our policies, decisions, and aspirations.

**Efficiency:** We accomplish our work using resources in the most effective manner.

**Collaboration:** We develop partnerships that result in student success and a highly qualified, globally competent workforce.

**Excellence:** We strive for excellence in all our endeavors.

The Texas Higher Education Coordinating Board does not discriminate on the basis of race, color, national origin, gender, religion, age or disability in employment or the provision of services.

Please cite this report as follows: Texas Higher Education Coordinating Board. (2021). Enrollment Forecast 2021-2035. Austin, TX.

**This page has been left blank intentionally.**

## Table of Contents

Enrollment Forecast 2021-2035 for Texas Institutions of Higher Education.....	5
Enrollment Forecast Methodology.....	5
The Enrollment Forecast.....	6
Important Considerations .....	7

## Tables

Table 1. Fall Headcount Enrollment Forecasts, Texas Institutions of Higher Education.....	6
Table 2. Forecasted Changes in Fall Headcount Participation .....	6
Table 3. Participation Projections by Region, Texas Public Institutions of Higher Education.....	9
Table 4. Participation Projections by Region, Texas Public Institutions of Higher Education.....	10
Table 5. Fall Headcount Participation Forecasts, Texas Public Universities .....	16
Table 6. Forecasted Changes in Fall Headcount Participation, Texas Public Universities .....	18
Table 7. Fall Headcount Participation Forecasts, Texas Public Two-Year Colleges.....	20
Table 8. Forecasted Changes in Fall Headcount Participation, Texas Public Two-Year Colleges.....	23

## Figures

Figure 1. Texas Higher Education Coordinating Board’s 10 Regions .....	8
Figure 2. Enrollment Forecast Development Process.....	26

## **Enrollment Forecast 2021-2035 for Texas Institutions of Higher Education**

Biennially since 1979, the Texas Higher Education Coordinating Board (THECB) has calculated enrollment trends and expectations, which are fundamental to higher education planning. In times of changing demographics, such as those Texas is experiencing, these forecasts become even more critical because they inform the higher education community about anticipated enrollment if current enrollment patterns continue.

The forecast is conducted every two years because demographic and other conditions change. The Enrollment Forecast 2021-2035 is the 22nd installment in the THECB's series on this important topic. Generally, the forecast is quite accurate in the short term and less accurate over the longer term. However, unforeseen events, such as the COVID-19 pandemic, may also affect short-term estimates.

The forecast is used for informational purposes to assist both institutions and the THECB. The enrollment forecast provides baseline figures for universities; community, technical, and state colleges; and independent colleges and universities. It does not include for-profit schools. The forecast also is beneficial for planning efforts at the THECB. One example of that is the strategic planning process for the *60x30TX* plan. Careful analysis of the new enrollment forecast numbers and population projections can help when reviewing or refining the plan's goals and targets, particularly the 60x30 educated population goal and the completion goal. The latter has associated targets that consider student demographics.

### **Enrollment Forecast Methodology**

The methodology used to produce the enrollment forecast has remained relatively unchanged since 1979. For public colleges and universities, it uses five years of past fall enrollments from Texas counties, differentiated by age and race/ethnicity, and applies those enrollment rates to population projections prepared by the Texas Demographic Center located at the University of Texas at San Antonio. Forecasts for independent colleges and universities are derived using simple linear regression, also based on five years of past data.

The methodology for both public and independent institutions does not consider possible future changes that could affect enrollments, such as improvements in high school graduation rates, increases in higher education enrollment by racial/ethnic groups, or changes in local policies. For that reason, the forecast is generally conservative; it projects future enrollments based on the continuation of current trends.

The five years used to determine this forecast are fall 2015 through fall 2019. Preliminary fall 2020 data are used to determine the "best fit" projection of three models generated using the prior five years of data (see Figure 2 for more details on the methodology).

The growth rate at public and independent colleges and universities from fall 2015 through fall 2019 was 6.2%. Modest growth was observed each year during this period. This steady trend marks a shift from the rapid increases (2009-2011) and subsequent decreases (2011-2013) in enrollment following the Great Recession.

## The Enrollment Forecast

The enrollment forecast concludes that if current patterns persist, Texas public and independent two-year and four-year institutions will grow from the 1.49 million enrollees in fall 2020 to 1.62 million in 2025. The 2025 projection is nearly 153,000 more students than in 2015 and over 190,000 more students than in 2010. This report also estimates enrollments through 2035, which are predicted to be almost 1.8million (Tables 1 and 2).

**Table 1. Fall Headcount Enrollment Forecasts, Texas Institutions of Higher Education**

	Actual 2010	Actual 2015	Actual Prelim. 2020	Total Projections		
				2025	2030	2035
Public Universities	557,550	619,175	667,072	718,441	756,218	800,892
Public Two-Year Colleges	743,252	718,547	699,573	770,104	809,950	863,783
Independent Universities	124,585	125,635	126,450	127,325	127,968	128,729
<b>Total</b>	<b>1,425,387</b>	<b>1,463,357</b>	<b>1,493,095</b>	<b>1,615,870</b>	<b>1,694,136</b>	<b>1,793,404</b>

Source: THECB CBM001; Texas Demographic Center Population Projections, 2018

**Table 2. Forecasted Changes in Fall Headcount Participation**

	2015-2020		2020-2025		2025-2030		2020-2035	
	Number	Percent	Number	Percent	Number	Percent	Number	Percent
Public Universities	47,897	7.7%	51,369	7.7%	37,777	5.3%	44,674	5.9%
Public Two- Year Colleges	-18,974	-2.6%	70,531	10.1%	39,846	5.2%	53,834	6.6%
Independent Universities	816	0.6%	875	0.7%	643	0.5%	761	0.6%
<b>Total</b>	<b>29,739</b>	<b>2.0%</b>	<b>122,774</b>	<b>8.2%</b>	<b>78,267</b>	<b>4.8%</b>	<b>99,268</b>	<b>5.9%</b>

Source: THECB CBM001; Texas Demographic Center Population Projections, 2018

Relative to the enrollment forecast produced in 2019, the projections in this report are somewhat lower than comparable years. The 1.62 million enrollments now projected for 2025 are about 69,000 lower than those previously projected for that year, and the 1.69 million students for 2030 are about 74,000 lower than the earlier 1.77 million estimate.

For public universities, preliminary fall 2020 enrollments totaled 667,000 students, or about 110,000 more students than in fall 2010. Enrollments at universities are projected to grow to 718,000 in 2025 (a 7.7% increase from 2020), to 756,000 in 2030 (a 5.3% increase from 2025), and to 801,000 by 2035 (a 5.9% increase from 2030).

Texas public two-year colleges, generally, have grown more rapidly than universities since the mid-1960s and are expected to continue to have more students than universities, despite the declines experienced from 2011 to 2014, less robust growth from 2015 to 2017, and the recent declines in fall 2020 that are most likely due to COVID-19. Public two-year colleges' enrollment was up to 758,000 in 2018 and 769,000 in 2019, surpassing the prior peak enrollment of 743,000 students in 2010. However, fall 2020 enrollment dropped almost 70,000 to 699,600 students, a decrease of about 44,000 since 2010 and a decrease of almost 19,000 students from fall 2015 enrollment. However, the enrollment forecast estimates a 10.1% enrollment increase at public two-year colleges from 2020 to 2025. Texas public two-year colleges are expected to enroll about 770,000 students in 2025; 810,000 in 2030; and 864,000 in 2035, or about 63,000 more than projected for public universities in that year.

About 126,500 students enrolled in Texas' independent colleges and universities in fall 2020. Independent college enrollments are forecast to grow very modestly to 127,000 in 2025, 128,000 in 2030, and 129,000 in 2035.

No enrollment projections are made for health-related institutions because their enrollments are more closely tied to state policies than to state population changes. Nor are projections made for career colleges because many lack a regional presence due to online offerings. Although not included in the forecast, Texas enrollments at these two institution types are available in the higher education accountability system.

## **Important Considerations**

Preliminary fall 2020 enrollment data indicate the effects that COVID-19 has had on higher education, particularly at public two-year colleges. Given these circumstances, THECB gave institutions the option to use 2019 fall enrollment in their enrollment projection model if they believed their fall 2020 enrollment numbers were not indicative of future trends. Thirteen institutions selected this option. Staff also adjusted projections for several institutions that provided acceptable rationale for changing their outputs. In some cases, institutions asked for their projections to be lower, citing reasons such as enrollment caps or anticipated reductions in international student enrollments. Others provided justifications for higher growth, such as the establishment of a new branch campus.

Additionally, the following points should be remembered when reviewing this forecast: The Texas Demographic Center (TDC) periodically updates its population projections and reconsiders the migration scenarios that should be used for long-term projections. This enrollment forecast uses the TDC's 2018 population projections, which are based on the estimated number of births, deaths, and the amount of net migration that takes place during the period of study. The TDC states that migration is the most difficult component in the projections to forecast because dynamics in Texas change quickly. Historical migration rates from 2010-2015 were used in the most recent population projection (published December 2018).

The other primary factor influencing projected enrollment is recent enrollment trends. As mentioned previously, fall enrollment at public and independent colleges and universities has grown steadily in each of the last five years. Between 2020 and 2035, the higher education regions with the fastest growing public university and two-year institution enrollments are the Metroplex, Central Texas, Gulf Coast, and South Texas ([Figure 1](#)). Those four regions are projected to account for 88% of the growth statewide, or about 262,000 enrollments out of a projected overall increase of about 298,000 ([Table 3](#) and [Table 4](#)).



The forecast model is influenced strongly by historical in-state enrollment patterns at each institution and projected population changes by county. The forecast may not accurately reflect future enrollment if institutions recruit students from different geographic areas or ethnic groups. Institutional decisions to change or impose enrollment limitations would also reduce the forecast's accuracy.

**Figure 1. Texas Higher Education Coordinating Board's 10 Regions**



Economics affect enrollment as well. Two-year college enrollment has usually expanded in times of increasing unemployment, in part because students want to update their skills to prepare for better jobs or jobs in different fields. During the Great Recession, enrollments surged at two-year colleges from 2008 to 2010. The pattern of decreased enrollments at two-year schools from 2011 to 2014 was similar to what has happened many times before; when the economy improves, many students, especially at the two-year level, bypass higher education for the workforce.

Before COVID-19, enrollments remained high, though growth was slowing at two-year colleges, perhaps due to very low levels of unemployment in Texas. The tables that follow present the enrollment forecasts in the short and longer term. Current enrollment projections predict steady increases in enrollment, but the long-term effects of COVID-19 and other unexpected changes may alter these predictions. The workforce has changed, and two-year colleges are expected to play an important role in reskilling and upskilling for Texas citizens who have lost jobs and been otherwise impacted by COVID and other economic changes.

**Table 3. Participation Projections by Region, Texas Public Institutions of Higher Education**

<b>Regional Enrollment Totals</b>	<b>Actual 2010</b>	<b>Actual 2015</b>	<b>Actual Prelim 2020</b>	<b>2025</b>	<b>2030</b>	<b>2035</b>
Central Texas	232,570	238,630	238,857	256,952	267,428	280,859
Gulf Coast	273,046	287,340	277,615	313,329	339,696	369,959
High Plains	63,910	66,739	70,551	73,788	76,053	79,472
Metroplex	309,686	326,660	344,167	382,180	407,281	436,564
Northwest	19,260	17,308	17,547	18,404	18,657	19,183
South Texas	231,827	232,076	244,493	260,207	267,234	279,663
Southeast Texas	40,968	39,089	41,710	44,594	45,575	46,822
Upper East Texas	50,937	47,371	48,454	50,690	51,013	52,372
Upper Rio Grande	51,435	53,063	51,727	53,244	54,715	56,841
West Texas	27,163	29,446	31,524	35,156	38,515	42,941
<b>Total</b>	<b>1,300,802</b>	<b>1,337,722</b>	<b>1,366,645</b>	<b>1,488,545</b>	<b>1,566,168</b>	<b>1,664,675</b>

Source: THECB CBM001; Texas Demographic Center Population Projections, 2018

**Table 4. Participation Projections by Region, Texas Public Institutions of Higher Education**

<b>Institution Name</b>	<b>Actual 2010</b>	<b>Actual 2015</b>	<b>Actual Prelim 2020</b>	<b>2025</b>	<b>2030</b>	<b>2035</b>
<b>Central Texas Region</b>						
Texas A&M University	49,129	58,515	65,272	70,279	73,432	77,842
Texas A&M University-Central Texas	2,317	2,466	2,339	2,585	2,792	2,975
Texas State University	32,572	37,979	37,812	40,512	42,634	45,280
The University of Texas at Austin	51,195	50,950	50,282	50,500	50,500	50,500
University Subtotal	135,213	149,910	155,705	163,876	169,358	176,596
Austin Community College	41,582	38,909	36,868	40,682	43,492	46,958
Blinn College District	17,755	19,157	17,955	18,773	19,448	20,652
Central Texas College	12,737	9,539	7,649	10,564	11,023	11,578
Hill College	4,429	3,977	4,038	4,117	4,283	4,537
McLennan Community College	9,912	8,300	7,742	8,717	8,990	9,208
Temple College	5,966	5,048	4,507	5,372	5,766	6,050
Texas State Technical College in Waco	4,976	3,790	4,393	4,851	5,068	5,279
Two-Year Colleges Subtotal	97,357	88,720	83,152	93,076	98,070	104,263
Central Texas Regional Totals	232,570	238,630	238,857	256,952	267,428	280,859
<b>Gulf Coast Region</b>						
Prairie View A&M University	8,781	8,268	9,248	9,933	10,493	11,214
Sam Houston State University	17,236	20,031	21,650	22,803	24,036	25,389
Texas A&M University at Galveston	1,867	2,324	1,653	1,794	1,869	1,966
Texas Southern University	9,557	8,965	7,015	7,588	8,088	8,660
University of Houston	38,752	42,704	47,060	53,903	59,676	66,201
University of Houston-Clear Lake	8,099	8,906	9,053	9,840	10,700	11,453
University of Houston-Downtown	12,900	14,255	15,239	16,417	17,685	19,052
University Subtotal	97,192	105,453	110,918	122,278	132,547	143,936
Alvin Community College	5,721	5,116	5,591	6,263	6,340	6,752
Brazosport College	4,174	4,221	3,829	4,275	4,355	4,559
College of the Mainland Community College District	4,352	4,013	4,335	5,090	5,485	5,992
Galveston College	2,318	2,071	2,060	2,298	2,495	2,730

<b>Institution Name</b>	<b>Actual 2010</b>	<b>Actual 2015</b>	<b>Actual Prelim 2020</b>	<b>2025</b>	<b>2030</b>	<b>2035</b>
Houston Community College	49,717	46,342	38,020	41,846	45,433	49,817
Lee College	6,719	6,202	4,271	7,990	8,470	9,006
Lone Star College System-Cy-Fair	16,861	18,857	20,559	23,389	25,503	27,713
Lone Star College System-Houston North	0	0	1,875	2,097	2,258	2,426
Lone Star College System-Kingwood	9,807	11,477	10,372	11,513	12,529	13,663
Lone Star College System-Montgomery	11,154	12,192	13,269	15,514	17,065	19,382
Lone Star College System-North Harris	15,213	14,985	10,125	11,237	12,102	12,955
Lone Star College System-Tomball	10,791	7,221	5,763	6,386	6,979	7,591
Lone Star College System-University Park	N/A	9,428	8,731	9,701	10,673	11,646
San Jacinto Community College District	32,105	32,346	31,110	35,807	39,315	42,824
Texas State Technical College in Fort Bend County	0	0	688	1,098	1,140	1,204
Wharton County Junior College	6,922	7,416	6,099	6,549	7,007	7,763
Two-Year Colleges Subtotal	175,854	181,887	166,697	191,051	207,149	226,023
<b>Gulf Coast Regional Totals</b>	<b>273,046</b>	<b>287,340</b>	<b>277,615</b>	<b>313,329</b>	<b>339,696</b>	<b>369,959</b>
<b>High Plains Region</b>						
Texas Tech University	31,587	35,546	39,574	41,793	43,436	45,708
West Texas A&M University	7,839	9,482	10,051	10,385	10,647	10,896
University Subtotal	39,426	45,028	49,625	52,178	54,083	56,604
Amarillo College	11,540	9,576	9,102	9,194	9,309	9,616
Clarendon College	1,583	1,343	1,417	1,529	1,617	1,729
Frank Phillips College	1,208	1,427	1,540	1,608	1,587	1,647
South Plains College	10,153	9,365	8,867	9,280	9,458	9,875
Two-Year Colleges Subtotal	24,484	21,711	20,926	21,610	21,970	22,868
<b>High Plains Regional Totals</b>	<b>63,910</b>	<b>66,739</b>	<b>70,551</b>	<b>73,788</b>	<b>76,053</b>	<b>79,472</b>
<b>Metroplex Region</b>						
Tarleton State University	9,340	12,333	14,022	15,785	17,181	18,442
Texas A&M University-Commerce	10,280	12,302	11,624	12,758	13,503	14,238
Texas Woman's University	14,008	15,146	16,032	17,045	18,221	19,469
The University of Texas at Arlington	32,975	37,008	42,733	46,262	50,454	55,026
The University of Texas at Dallas	17,128	24,554	28,669	36,851	40,999	45,417

<b>Institution Name</b>	<b>Actual 2010</b>	<b>Actual 2015</b>	<b>Actual Prelim 2020</b>	<b>2025</b>	<b>2030</b>	<b>2035</b>
University of North Texas	36,067	37,175	40,653	43,639	46,531	49,245
University of North Texas-Dallas	2,084	2,488	4,190	4,619	4,966	5,215
University Subtotal	121,882	141,006	157,923	176,958	191,855	207,051
Collin County Community College District	26,501	27,656	34,491	38,692	41,482	45,501
Dallas College Brookhaven Campus	10,847	10,367	10,205	11,294	12,187	13,136
Dallas College Cedar Valley Campus	5,924	5,955	5,943	6,257	6,586	6,961
Dallas College Eastfield Campus	10,852	12,319	12,377	13,412	14,171	15,008
Dallas College El Centro Campus	9,823	9,452	10,214	11,465	12,115	12,875
Dallas College Mountain View Campus	7,975	8,739	7,844	8,703	9,063	9,530
Dallas College North Lake Campus	10,904	8,946	8,587	10,520	11,460	12,374
Dallas College Richland Campus	16,858	16,226	14,040	15,908	17,412	18,906
Grayson College	5,034	4,453	4,032	4,509	4,488	4,620
Navarro College	9,982	9,420	7,065	7,205	7,154	7,448
North Central Texas College	9,402	9,533	8,191	8,979	9,247	9,936
Tarrant County College District-Connect Campus	0	13,459	10,274	10,951	11,518	11,920
Tarrant County College District-Northeast Campus	15,899	11,440	12,092	12,746	13,018	13,501
Tarrant County College District-Northwest Campus	12,032	7,690	8,932	9,661	9,778	10,196
Tarrant County College District-South Campus	11,690	7,350	7,977	8,773	8,998	9,422
Tarrant County College District-Southeast Campus	13,911	10,469	11,309	12,354	12,627	13,287
Tarrant County College District-Trinity River Campus	4,519	6,698	6,721	7,355	7,573	7,858
Texas State Technical College in North Texas	0	0	496	709	793	874
Weatherford College	5,651	5,482	5,454	5,728	5,756	6,160
Two-Year Colleges Subtotal	187,804	185,654	186,244	205,222	215,426	229,513
Metroplex Regional Totals	309,686	326,660	344,167	382,180	407,281	436,564
<b>Northwest Region</b>						
Midwestern State University	6,133	5,734	5,387	5,767	5,888	6,065
University Subtotal	6,133	5,734	5,387	5,767	5,888	6,065
Cisco College	4,745	3,293	3,251	3,246	3,284	3,364
Ranger College	1,588	2,052	2,304	2,282	2,267	2,327
Texas State Technical College in West Texas	1,320	1,211	2,390	2,735	2,884	3,029

<b>Institution Name</b>	<b>Actual 2010</b>	<b>Actual 2015</b>	<b>Actual Prelim 2020</b>	<b>2025</b>	<b>2030</b>	<b>2035</b>
Vernon College	3,167	2,891	2,773	2,862	2,820	2,800
Western Texas College	2,307	2,127	1,442	1,512	1,515	1,598
Two-Year Colleges Subtotal	13,127	11,574	12,160	12,637	12,770	13,118
Northwest Regional Totals	19,260	17,308	17,547	18,404	18,657	19,183
<b>South Texas Region</b>						
Sul Ross State University-Rio Grande College	1,092	1,019	916	950	955	946
Texas A&M International University	6,853	7,192	8,270	8,479	8,693	8,912
Texas A&M University-Corpus Christi	10,033	11,661	10,820	11,153	11,594	12,217
Texas A&M University-Kingsville	6,586	9,207	6,915	7,392	7,452	7,588
Texas A&M University-San Antonio	3,120	4,564	6,741	7,370	7,856	8,399
The University of Texas at San Antonio	30,258	28,787	34,402	38,006	40,073	42,968
The University of Texas Rio Grande Valley*	25,599	28,584	32,220	32,484	31,611	31,134
University of Houston-Victoria	4,095	4,152	4,931	5,494	5,912	6,278
University Subtotal	87,636	95,166	105,215	111,328	114,147	118,444
Alamo District-Northeast Lakeview College	1,312	3,332	6,657	6,911	7,534	8,350
Alamo District-Northwest Vista College	15,921	16,656	18,542	19,365	20,788	22,556
Alamo District-Palo Alto College	8,965	8,671	11,193	11,362	12,099	13,034
Alamo District-San Antonio College	25,269	20,638	19,231	19,818	21,226	22,894
Alamo District-St. Philip's College	10,828	11,198	12,696	14,075	15,208	16,621
Coastal Bend College	4,348	4,436	4,105	4,180	4,293	4,488
Del Mar College	12,236	10,852	10,678	12,500	13,139	13,918
Laredo Community College	9,994	8,690	5,236	9,985	9,316	9,298
South Texas College	27,971	33,994	27,710	27,460	26,305	26,507
Southwest Texas Junior College	6,235	5,608	6,377	6,472	6,503	6,731
Texas Southmost College	11,043	4,029	8,777	8,102	7,885	7,757
Texas State Technical College in Harlingen	5,779	4,789	4,864	5,286	5,393	5,529
Victoria College	4,290	4,017	3,212	3,363	3,398	3,535
Two-Year Colleges Subtotal	144,191	136,910	139,278	148,879	153,087	161,219
South Texas Regional Totals	231,827	232,076	244,493	260,207	267,234	279,663

<b>Institution Name</b>	<b>Actual 2010</b>	<b>Actual 2015</b>	<b>Actual Prelim 2020</b>	<b>2025</b>	<b>2030</b>	<b>2035</b>
<b>Southeast Texas Region</b>						
Lamar University	13,969	14,494	15,799	17,321	18,214	18,984
Stephen F. Austin State University	12,829	12,484	12,488	13,277	13,491	13,828
University Subtotal	26,798	26,978	28,287	30,597	31,705	32,812
Angelina College	5,904	5,145	4,073	4,147	4,126	4,164
Lamar Institute of Technology	3,243	2,846	4,402	4,593	4,537	4,559
Lamar State College-Orange	2,649	2,318	2,382	2,389	2,312	2,334
Lamar State College-Port Arthur	2,374	1,802	2,566	2,867	2,895	2,952
Two-Year Colleges Subtotal	14,170	12,111	13,423	13,996	13,870	14,010
Southeast Texas Regional Totals	40,968	39,089	41,710	44,594	45,575	46,822
<b>Upper East Texas Region</b>						
Texas A&M University-Texarkana	1,803	1,839	2,161	2,228	2,264	2,266
The University of Texas at Tyler	6,446	8,500	9,408	10,017	10,288	10,622
University Subtotal	8,249	10,339	11,569	12,246	12,552	12,888
Kilgore College	6,661	5,640	5,089	5,432	5,314	5,317
Northeast Texas Community College	3,226	2,704	2,758	2,978	2,900	2,881
Panola College	2,322	2,664	2,529	2,483	2,473	2,450
Paris Junior College	6,197	5,000	4,386	4,448	4,423	4,554
Texarkana College	4,003	4,144	3,810	3,827	3,547	3,526
Texas State Technical College in Marshall	949	899	925	1,180	1,283	1,383
Trinity Valley Community College	7,594	6,694	5,662	5,853	5,946	6,356
Tyler Junior College	11,736	9,287	11,726	12,243	12,574	13,018
Two-Year Colleges Subtotal	42,688	37,032	36,885	38,445	38,461	39,485
Upper East Texas Regional Totals	50,937	47,371	48,454	50,690	51,013	52,372
<b>Upper Rio Grande Region</b>						
Sul Ross State University	2,047	1,973	1,557	1,561	1,611	1,678
The University of Texas at El Paso	22,051	23,308	24,867	24,408	24,317	25,288
University Subtotal	24,098	25,281	26,424	25,969	25,928	26,966

<b>Institution Name</b>	<b>Actual 2010</b>	<b>Actual 2015</b>	<b>Actual Prelim 2020</b>	<b>2025</b>	<b>2030</b>	<b>2035</b>
El Paso Community College District	27,337	27,782	25,303	27,275	28,787	29,874
Two-Year Colleges Subtotal	27,337	27,782	25,303	27,275	28,787	29,874
Upper Rio Grande Regional Totals	51,435	53,063	51,727	53,244	54,715	56,841
<b>West Texas Region</b>						
Angelo State University	6,860	8,343	10,489	11,167	11,401	11,986
The University of Texas Permian Basin	4,063	5,937	5,530	6,078	6,756	7,544
University Subtotal	10,923	14,280	16,019	17,245	18,156	19,530
Howard County Junior College District - Howard College	4,582	4,065	3,696	3,989	4,100	4,361
Midland College	6,344	5,413	4,763	6,178	7,403	8,805
Odessa College	5,211	5,552	6,978	7,692	8,799	10,186
Howard County Junior College District - SouthWest College for the Deaf	103	136	68	52	56	59
Two-Year Colleges Subtotal	16,240	15,166	15,505	17,911	20,359	23,411
West Texas Regional Totals	27,163	29,446	31,524	35,156	38,515	42,941
Public Total	1,300,802	1,337,722	1,366,645	1,488,545	1,566,168	1,664,675

Source: THECB CBM001; Texas Demographic Center Population Projections, 2018

\*The University of Texas at Brownsville and The University of Texas-Pan American were combined into The University of Texas Rio Grande Valley.



**Table 5. Fall Headcount Participation Forecasts, Texas Public Universities**

	<b>Actual</b>		<b>Total Projections</b>						
	<b>Actual 2015</b>	<b>Prelim 2020</b>	<b>2021</b>	<b>2022</b>	<b>2023</b>	<b>2024</b>	<b>2025</b>	<b>2030</b>	<b>2035</b>
Angelo State University	8,343	10,489	10,842	10,942	11,075	11,142	11,167	11,401	11,986
Lamar University	14,494	15,799	16,625	16,794	16,970	17,145	17,321	18,214	18,984
Midwestern State University	5,734	5,387	5,647	5,677	5,714	5,748	5,767	5,888	6,065
Prairie View A&M University	8,268	9,248	9,507	9,634	9,748	9,862	9,933	10,493	11,214
Sam Houston State University	20,031	21,650	21,805	22,064	22,329	22,596	22,803	24,036	25,389
Stephen F. Austin State University	12,484	12,488	13,044	13,126	13,200	13,258	13,277	13,491	13,828
Sul Ross State University	1,973	1,557	1,565	1,563	1,562	1,562	1,561	1,611	1,678
Sul Ross State University-Rio Grande College	1,019	916	925	935	940	945	950	955	946
Tarleton State University	12,333	14,022	14,599	14,903	15,227	15,532	15,785	17,181	18,442
Texas A&M International University	7,192	8,270	8,311	8,353	8,395	8,437	8,479	8,693	8,912
Texas A&M University	58,515	65,272	67,678	68,341	69,113	69,789	70,279	73,432	77,842
Texas A&M University at Galveston	2,324	1,653	1,736	1,751	1,767	1,782	1,794	1,869	1,966
Texas A&M University-Central Texas	2,466	2,339	2,437	2,473	2,510	2,548	2,585	2,792	2,975
Texas A&M University-Commerce	12,302	11,624	12,122	12,293	12,465	12,622	12,758	13,503	14,238
Texas A&M University-Corpus Christi	11,661	10,820	10,841	10,931	11,021	11,095	11,153	11,594	12,217
Texas A&M University-Kingsville	9,207	6,915	7,292	7,328	7,368	7,383	7,392	7,452	7,588
Texas A&M University-San Antonio	4,564	6,741	6,960	7,069	7,183	7,282	7,370	7,856	8,399
Texas A&M University-Texarkana	1,839	2,161	2,193	2,202	2,214	2,222	2,228	2,264	2,266
Texas Southern University	8,965	7,015	7,206	7,311	7,405	7,508	7,588	8,088	8,660
Texas State University	37,979	37,812	38,662	39,153	39,666	40,136	40,512	42,634	45,280
Texas Tech University	35,546	39,574	40,395	40,785	41,185	41,539	41,793	43,436	45,708
Texas Woman's University	15,146	16,032	15,850	16,168	16,481	16,781	17,045	18,221	19,469
The University of Texas at Arlington	37,008	42,733	43,160	43,916	44,684	45,466	46,262	50,454	55,026
The University of Texas at Austin	50,950	50,282	50,500	50,500	50,500	50,500	50,500	50,500	50,500
The University of Texas at Dallas	24,554	28,669	32,858	33,852	34,926	35,961	36,851	40,999	45,417
The University of Texas at El Paso	23,308	24,867	25,299	25,071	24,884	24,653	24,408	24,317	25,288
The University of Texas Permian Basin	5,937	5,530	5,608	5,718	5,840	5,958	6,078	6,756	7,544
The University of Texas Rio Grande Valley	28,584	32,220	32,455	32,527	32,575	32,553	32,484	31,611	31,134
The University of Texas at San Antonio	28,787	34,402	36,340	36,782	37,269	37,672	38,006	40,073	42,968
The University of Texas at Tyler	8,500	9,408	9,763	9,837	9,909	9,976	10,017	10,288	10,622
University of Houston	42,704	47,060	49,103	50,262	51,474	52,776	53,903	59,676	66,201

	<b>Actual 2015</b>	<b>Actual Prelim 2020</b>	<b>Total Projections</b>						
			<b>2021</b>	<b>2022</b>	<b>2023</b>	<b>2024</b>	<b>2025</b>	<b>2030</b>	<b>2035</b>
University of Houston-Clear Lake	8,906	9,053	9,173	9,332	9,498	9,678	9,840	10,700	11,453
University of Houston-Downtown	14,255	15,239	15,468	15,700	15,935	16,174	16,417	17,685	19,052
University of Houston-Victoria	4,152	4,931	5,169	5,243	5,328	5,414	5,494	5,912	6,278
University of North Texas	37,175	40,653	40,561	41,387	42,219	42,989	43,639	46,531	49,245
University of North Texas-Dallas	2,488	4,190	4,267	4,361	4,452	4,540	4,619	4,966	5,215
West Texas A&M University	9,482	10,051	10,132	10,180	10,247	10,321	10,385	10,647	10,896
<b>University Statewide Totals</b>	<b>619,175</b>	<b>667,072</b>	<b>686,097</b>	<b>694,462</b>	<b>703,280</b>	<b>711,546</b>	<b>718,441</b>	<b>756,218</b>	<b>800,892</b>

Source: THECB CBM001; Texas Demographic Center Population Projections, 2018

\*The University of Texas at Brownsville and The University of Texas-Pan American were combined into The University of Texas Rio Grande Valley.

**Table 6. Forecasted Changes in Fall Headcount Participation, Texas Public Universities**

	2015-2020		2020-2025		2025-2030		2030-2035	
	Number	Percent	Number	Percent	Number	Percent	Number	Percent
Angelo State University	2,146	25.7%	678	6.5%	234	2.1%	585	5.1%
Lamar University	1,305	9.0%	1,522	9.6%	893	5.2%	771	4.2%
Midwestern State University	-347	-6.1%	380	7.0%	121	2.1%	177	3.0%
Prairie View A&M University	980	11.9%	685	7.4%	560	5.6%	721	6.9%
Sam Houston State University	1,619	8.1%	1,153	5.3%	1,233	5.4%	1,353	5.6%
Stephen F. Austin State University	4	0.0%	789	6.3%	215	1.6%	337	2.5%
Sul Ross State University	-416	-21.1%	4	0.2%	50	3.2%	67	4.2%
Sul Ross State University-Rio Grande College	-103	-10.1%	34	3.7%	5	0.5%	-8	-0.9%
Tarleton State University	1,689	13.7%	1,763	12.6%	1,396	8.8%	1,261	7.3%
Texas A&M International University	1,078	15.0%	209	2.5%	214	2.5%	220	2.5%
Texas A&M University	6,757	11.5%	5,007	7.7%	3,153	4.5%	4,410	6.0%
Texas A&M University at Galveston	-671	-28.9%	141	8.5%	75	4.2%	97	5.2%
Texas A&M University-Central Texas	-127	-5.2%	246	10.5%	207	8.0%	182	6.5%
Texas A&M University-Commerce	-678	-5.5%	1,134	9.8%	746	5.8%	735	5.4%
Texas A&M University-Corpus Christi	-841	-7.2%	333	3.1%	441	4.0%	623	5.4%
Texas A&M University-Kingsville	-2,292	-24.9%	477	6.9%	59	0.8%	137	1.8%
Texas A&M University-San Antonio	2,177	47.7%	629	9.3%	487	6.6%	543	6.9%
Texas A&M University-Texarkana	322	17.5%	67	3.1%	35	1.6%	2	0.1%
Texas Southern University	-1,950	-21.8%	573	8.2%	499	6.6%	572	7.1%
Texas State University	-167	-0.4%	2,700	7.1%	2,122	5.2%	2,646	6.2%
Texas Tech University	4,028	11.3%	2,219	5.6%	1,643	3.9%	2,272	5.2%
Texas Woman's University	886	5.8%	1,013	6.3%	1,176	6.9%	1,248	6.8%
The University of Texas at Arlington	5,725	15.5%	3,529	8.3%	4,192	9.1%	4,572	9.1%
The University of Texas at Austin	-668	-1.3%	218	0.4%	0	0.0%	0	0.0%
The University of Texas at Dallas	4,115	16.8%	8,182	28.5%	4,147	11.3%	4,418	10.8%
The University of Texas at El Paso	1,559	6.7%	-459	-1.8%	-91	-0.4%	971	4.0%
The University of Texas Permian Basin	-407	-6.9%	548	9.9%	678	11.2%	788	11.7%
The University of Texas-Rio Grande Valley*	3,636	12.7%	264	0.8%	-873	-2.7%	-477	-1.5%
The University of Texas at San Antonio	5,615	19.5%	3,604	10.5%	2,067	5.4%	2,895	7.2%
The University of Texas at Tyler	908	10.7%	609	6.5%	271	2.7%	334	3.2%
University of Houston	4,356	10.2%	6,843	14.5%	5,773	10.7%	6,525	10.9%
University of Houston-Clear Lake	147	1.7%	787	8.7%	860	8.7%	754	7.0%
University of Houston-Downtown	984	6.9%	1,178	7.7%	1,269	7.7%	1,367	7.7%

	2015-2020		2020-2025		2025-2030		2030-2035	
	Number	Percent	Number	Percent	Number	Percent	Number	Percent
University of Houston-Victoria	779	18.8%	563	11.4%	418	7.6%	366	6.2%
University of North Texas	3,478	9.4%	2,986	7.3%	2,893	6.6%	2,713	5.8%
University of North Texas-Dallas	1,702	68.4%	429	10.2%	347	7.5%	249	5.0%
West Texas A&M University	569	6.0%	334	3.3%	262	2.5%	249	2.3%
<b>University Statewide Totals</b>	<b>47,897</b>	<b>7.7%</b>	<b>51,369</b>	<b>7.7%</b>	<b>37,777</b>	<b>5.3%</b>	<b>44,674</b>	<b>5.9%</b>

Source: THECB CBM001; Texas Demographic Center Population Projections, 2018

\*The University of Texas at Brownsville and The University of Texas-Pan American were combined into The University of Texas Rio Grande Valley.

**Table 7. Fall Headcount Participation Forecasts, Texas Public Two-Year Colleges**

	Actual		Total Projections						
	Actual 2015	Prelim 2020	2021	2022	2023	2024	2025	2030	2035
Alamo District-Northeast Lakeview College	3,332	6,657	6,578	6,661	6,760	6,843	6,911	7,534	8,350
Alamo District-Northwest Vista College	16,656	18,542	18,521	18,752	19,014	19,204	19,365	20,788	22,556
Alamo District-Palo Alto College	8,671	11,193	10,876	11,019	11,168	11,278	11,362	12,099	13,034
Alamo District-San Antonio College	20,638	19,231	18,844	19,107	19,388	19,621	19,818	21,226	22,894
Alamo District-St. Philip's College	11,198	12,696	13,316	13,531	13,746	13,931	14,075	15,208	16,621
Alvin Community College	5,116	5,591	5,814	5,947	6,051	6,173	6,263	6,340	6,752
Amarillo College	9,576	9,102	8,922	9,000	9,081	9,142	9,194	9,309	9,616
Angelina College	5,145	4,073	4,111	4,140	4,162	4,161	4,147	4,126	4,164
Austin Community College	38,909	36,868	38,076	38,767	39,474	40,094	40,682	43,492	46,958
Blinn College District	19,157	17,955	18,052	18,257	18,473	18,639	18,773	19,448	20,652
Brazosport College	4,221	3,829	3,987	4,071	4,136	4,216	4,275	4,355	4,559
Central Texas College	9,539	7,649	9,935	10,109	10,279	10,457	10,564	11,023	11,578
Cisco College	3,293	3,251	3,216	3,248	3,251	3,251	3,246	3,284	3,364
Clarendon College	1,343	1,417	1,493	1,485	1,549	1,543	1,529	1,617	1,729
Coastal Bend College	4,436	4,105	4,103	4,147	4,181	4,177	4,180	4,293	4,488
College of the Mainland Community College District	4,013	4,335	4,762	4,859	4,951	5,021	5,090	5,485	5,992
Collin County Community College District	27,656	34,491	35,933	36,739	37,552	38,215	38,692	41,482	45,501
Dallas College Brookhaven Campus	10,367	10,205	10,425	10,655	10,894	11,108	11,294	12,187	13,136
Dallas College Cedar Valley Campus	5,955	5,943	5,893	5,994	6,102	6,190	6,257	6,586	6,961
Dallas College Eastfield Campus	12,319	12,377	12,565	12,808	13,068	13,265	13,412	14,171	15,008
Dallas College El Centro Campus	9,452	10,214	10,678	10,894	11,124	11,314	11,465	12,115	12,875
Dallas College Mountain View Campus	8,739	7,844	8,110	8,278	8,458	8,598	8,703	9,063	9,530
Dallas College North Lake Campus	8,946	8,587	9,658	9,886	10,128	10,338	10,520	11,460	12,374
Dallas College Richland Campus	16,226	14,040	14,676	14,999	15,349	15,650	15,908	17,412	18,906
Del Mar College	10,852	10,678	12,212	12,292	12,388	12,456	12,500	13,139	13,918
El Paso Community College District	27,782	25,303	27,966	27,815	27,687	27,506	27,275	28,787	29,874
Frank Phillips College	1,427	1,540	1,566	1,579	1,597	1,613	1,608	1,587	1,647
Galveston College	2,071	2,060	2,132	2,178	2,224	2,262	2,298	2,495	2,730
Grayson College	4,453	4,032	4,474	4,467	4,495	4,513	4,509	4,488	4,620

	<b>Actual</b>	<b>Actual</b>	<b>Total Projections</b>						
	<b>2015</b>	<b>2020</b>	<b>2021</b>	<b>2022</b>	<b>2023</b>	<b>2024</b>	<b>2025</b>	<b>2030</b>	<b>2035</b>
Hill College	3,977	4,038	4,065	4,082	4,100	4,123	4,117	4,283	4,537
Houston Community College	46,342	38,020	38,557	39,422	40,227	41,061	41,846	45,433	49,817
Howard County Junior College District-Howard College	4,065	3,696	3,779	3,856	3,917	3,973	3,989	4,100	4,361
Howard County Junior College District-SouthWest College for the Deaf	136	68	50	50	51	52	52	56	59
Kilgore College	5,640	5,089	5,314	5,356	5,392	5,416	5,432	5,314	5,317
Lamar Institute of Technology	2,846	4,402	4,539	4,567	4,577	4,589	4,593	4,537	4,559
Lamar State College-Orange	2,318	2,382	2,402	2,400	2,400	2,392	2,389	2,312	2,334
Lamar State College-Port Arthur	1,802	2,566	2,764	2,797	2,822	2,848	2,867	2,895	2,952
Laredo Community College	8,690	5,236	10,101	10,062	10,073	10,028	9,985	9,316	9,298
Lee College	6,202	4,271	7,535	7,647	7,754	7,880	7,990	8,470	9,006
Lone Star College System-Cy-Fair College	18,857	20,559	21,645	22,101	22,536	22,967	23,389	25,503	27,713
Lone Star College System-Houston North	0	1,875	1,927	1,971	2,014	2,057	2,097	2,258	2,426
Lone Star College System-Kingwood	11,477	10,372	10,623	10,852	11,076	11,298	11,513	12,529	13,663
Lone Star College System-Montgomery	12,192	13,269	14,103	14,458	14,841	15,186	15,514	17,065	19,382
Lone Star College System-North Harris	14,985	10,125	10,356	10,586	10,811	11,029	11,237	12,102	12,955
Lone Star College System-Tomball	7,221	5,763	5,932	6,046	6,160	6,272	6,386	6,979	7,591
Lone Star College System-University Park	9,428	8,731	8,951	9,142	9,330	9,517	9,701	10,673	11,646
McLennan Community College	8,300	7,742	7,974	8,213	8,459	8,713	8,717	8,990	9,208
Midland College	5,413	4,763	5,267	5,455	5,727	5,943	6,178	7,403	8,805
Navarro College	9,420	7,065	7,174	7,186	7,214	7,221	7,205	7,154	7,448
North Central Texas College	9,533	8,191	8,419	8,579	8,739	8,868	8,979	9,247	9,936
Northeast Texas Community College	2,704	2,758	2,949	2,974	2,993	2,975	2,978	2,900	2,881
Odessa College	5,552	6,978	6,688	6,931	7,175	7,425	7,692	8,799	10,186
Panola College	2,664	2,529	2,532	2,529	2,522	2,506	2,483	2,473	2,450
Paris Junior College	5,000	4,386	4,416	4,439	4,457	4,458	4,448	4,423	4,554
Ranger College	2,052	2,304	2,300	2,309	2,294	2,293	2,282	2,267	2,327
San Jacinto Community College District	32,346	31,110	33,000	33,701	34,403	35,105	35,807	39,315	42,824
South Plains College	9,365	8,867	8,908	9,018	9,123	9,216	9,280	9,458	9,875
South Texas College	33,994	27,710	27,671	27,650	27,635	27,591	27,460	26,305	26,507
Southwest Texas Junior College	5,608	6,377	6,610	6,590	6,555	6,531	6,472	6,503	6,731
Tarrant County College District-Connect Campus	13,459	10,274	10,310	10,476	10,642	10,807	10,951	11,518	11,920
Tarrant County College District-Northeast Campus	11,440	12,092	12,172	12,339	12,505	12,636	12,746	13,018	13,501

	Actual	Actual	Total Projections						
	2015	Prelim 2020	2021	2022	2023	2024	2025	2030	2035
Tarrant County College-Northwest Campus	7,690	8,932	9,222	9,357	9,490	9,582	9,661	9,778	10,196
Tarrant County College-South Campus	7,350	7,977	8,231	8,387	8,543	8,672	8,773	8,998	9,422
Tarrant County College-Southeast Campus	10,469	11,309	11,637	11,849	12,063	12,226	12,354	12,627	13,287
Tarrant County College-Trinity River Campus	6,698	6,721	6,903	7,031	7,157	7,263	7,355	7,573	7,858
Temple College	5,048	4,507	5,015	5,108	5,218	5,304	5,372	5,766	6,050
Texarkana College	4,144	3,810	3,903	3,917	3,916	3,873	3,827	3,547	3,526
Texas Southmost College	4,029	8,777	8,570	8,450	8,352	8,208	8,102	7,885	7,757
Texas State Technical College in Fort Bend	0	688	831	937	1,004	1,051	1,098	1,140	1,204
Texas State Technical College in Harlingen	4,789	4,864	5,204	5,201	5,224	5,260	5,286	5,393	5,529
Texas State Technical College in Marshall	899	925	1,014	1,070	1,112	1,148	1,180	1,283	1,383
Texas State Technical College in North Texas	0	496	573	618	653	683	709	793	874
Texas State Technical College in Waco	3,790	4,393	4,501	4,618	4,708	4,784	4,851	5,068	5,279
Texas State Technical College in West Texas	1,211	2,390	2,494	2,575	2,637	2,689	2,735	2,884	3,029
Trinity Valley Community College	6,694	5,662	5,693	5,744	5,809	5,845	5,853	5,946	6,356
Tyler Junior College	9,287	11,726	11,841	12,009	12,069	12,163	12,243	12,574	13,018
Vernon College	2,891	2,773	2,923	2,901	2,889	2,882	2,862	2,820	2,800
Victoria College	4,017	3,212	3,256	3,290	3,323	3,345	3,363	3,398	3,535
Weatherford College	5,482	5,454	5,546	5,615	5,678	5,721	5,728	5,756	6,160
Western Texas College	2,127	1,442	1,461	1,480	1,502	1,511	1,512	1,515	1,598
Wharton County Junior College	7,416	6,099	6,120	6,247	6,355	6,453	6,549	7,007	7,763
<b>Two-Year Colleges Statewide Totals</b>	<b>718,547</b>	<b>699,573</b>	<b>730,865</b>	<b>741,871</b>	<b>752,959</b>	<b>762,420</b>	<b>770,104</b>	<b>809,950</b>	<b>863,783</b>

Source: THECB CBM001; Texas Demographic Center Population Projections, 2018

**Table 8. Forecasted Changes in Fall Headcount Participation, Texas Public Two-Year Colleges**

	2015-2020		2020-2025		2025-2030		2030-2035	
	Number	Percent	Number	Percent	Number	Percent	Number	Percent
Alamo District-Northeast Lakeview College	3,325	99.8%	254	3.8%	623	9.0%	816	10.8%
Alamo District-Northwest Vista College	1,886	11.3%	823	4.4%	1,423	7.3%	1,768	8.5%
Alamo District-Palo Alto College	2,522	29.1%	169	1.5%	737	6.5%	935	7.7%
Alamo District-San Antonio College	-1,407	-6.8%	587	3.1%	1,408	7.1%	1,668	7.9%
Alamo District-St. Philip's College	1,498	13.4%	1,379	10.9%	1,133	8.1%	1,413	9.3%
Alvin Community College	475	9.3%	672	12.0%	78	1.2%	412	6.5%
Amarillo College	-474	-4.9%	92	1.0%	115	1.2%	308	3.3%
Angelina College	-1,072	-20.8%	74	1.8%	-22	-0.5%	39	0.9%
Austin Community College	-2,041	-5.2%	3,814	10.3%	2,810	6.9%	3,467	8.0%
Blinn College District	-1,202	-6.3%	818	4.6%	674	3.6%	1,204	6.2%
Brazosport College	-392	-9.3%	446	11.6%	80	1.9%	203	4.7%
Central Texas College	-1,890	-19.8%	2,915	38.1%	460	4.4%	555	5.0%
Cisco College	-42	-1.3%	-5	-0.2%	38	1.2%	80	2.4%
Clarendon College	74	5.5%	112	7.9%	88	5.8%	112	6.9%
Coastal Bend College	-331	-7.5%	75	1.8%	113	2.7%	196	4.6%
College of the Mainland Community College District	322	8.0%	755	17.4%	395	7.8%	507	9.2%
Collin County Community College District	6,835	24.7%	4,201	12.2%	2,790	7.2%	4,019	9.7%
Dallas College Brookhaven Campus	-162	-1.6%	1,089	10.7%	893	7.9%	949	7.8%
Dallas College Cedar Valley Campus	-12	-0.2%	314	5.3%	328	5.2%	375	5.7%
Dallas College Eastfield Campus	58	0.5%	1,035	8.4%	759	5.7%	837	5.9%
Dallas College El Centro Campus	762	8.1%	1,251	12.3%	650	5.7%	759	6.3%
Dallas College Mountain View Campus	-895	-10.2%	859	11.0%	359	4.1%	467	5.1%
Dallas College North Lake Campus	-359	-4.0%	1,933	22.5%	940	8.9%	914	8.0%
Dallas College Richland Campus	-2,186	-13.5%	1,868	13.3%	1,504	9.5%	1,494	8.6%
Del Mar College	-174	-1.6%	1,822	17.1%	639	5.1%	780	5.9%
El Paso Community College District	-2,479	-8.9%	1,972	7.8%	1,512	5.5%	1,087	3.8%
Frank Phillips College	113	7.9%	68	4.4%	-21	-1.3%	60	3.8%
Galveston College	-11	-0.5%	238	11.5%	198	8.6%	235	9.4%
Grayson College	-421	-9.5%	477	11.8%	-21	-0.5%	132	3.0%
Hill College	61	1.5%	79	2.0%	166	4.0%	254	5.9%

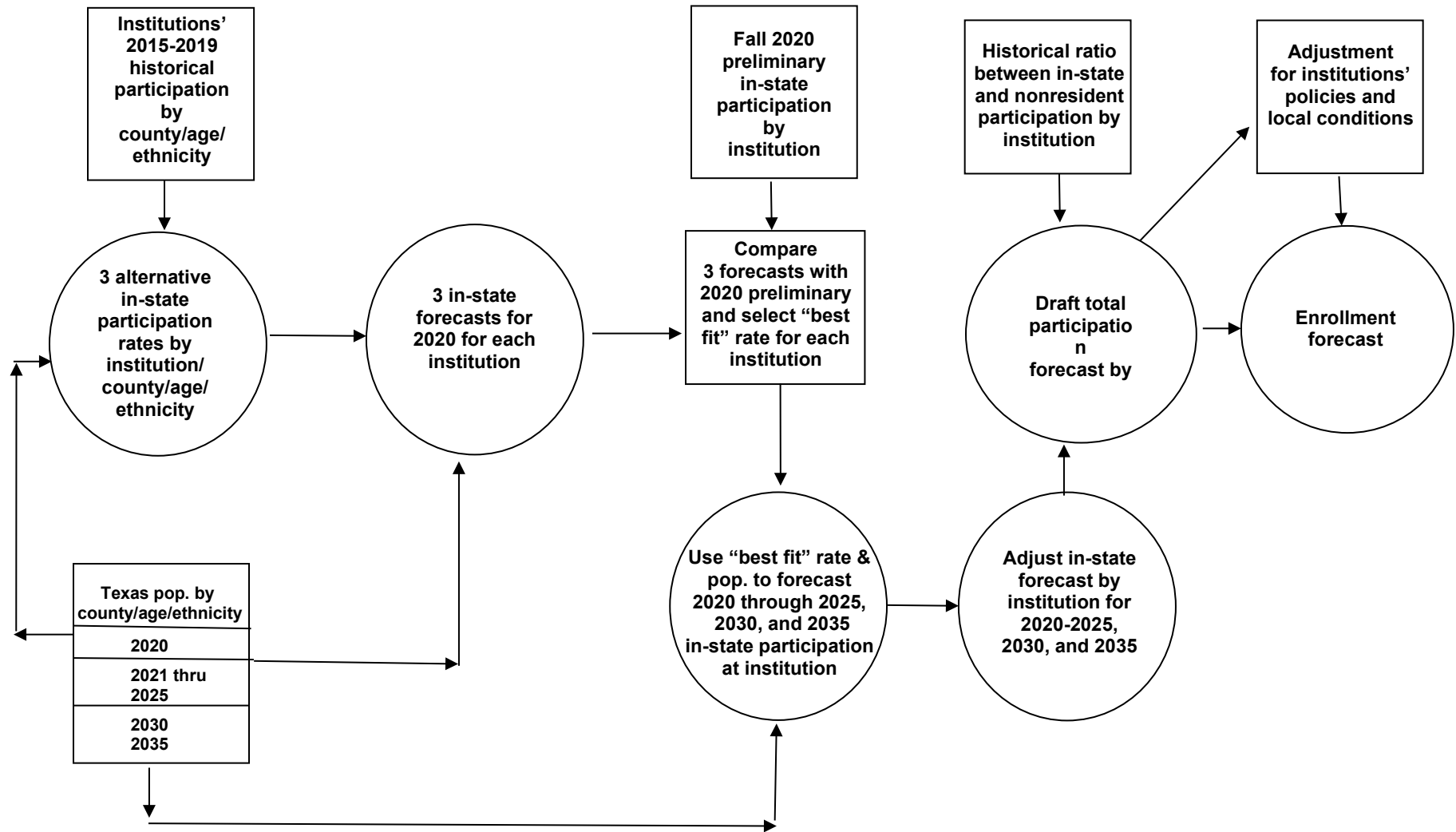


	2015-2020		2020-2025		2025-2030		2030-2035	
	Number	Percent	Number	Percent	Number	Percent	Number	Percent
Houston Community College	-8,322	-18.0%	3,826	10.1%	3,587	8.6%	4,384	9.7%
Howard County Junior College District-Howard College	-369	-9.1%	293	7.9%	111	2.8%	261	6.4%
Howard County Junior College District-SouthWest College for the Deaf	-68	-50.0%	-16	-23.7%	5	8.7%	3	4.8%
Kilgore College	-551	-9.8%	343	6.7%	-118	-2.2%	3	0.0%
Lamar Institute of Technology	1,556	54.7%	191	4.3%	-56	-1.2%	22	0.5%
Lamar State College-Orange	64	2.8%	7	0.3%	-77	-3.2%	21	0.9%
Lamar State College-Port Arthur	764	42.4%	301	11.7%	29	1.0%	57	2.0%
Laredo Community College	-3,454	-39.7%	4,749	90.7%	-669	-6.7%	-18	-0.2%
Lee College	-1,931	-31.1%	3,719	87.1%	480	6.0%	537	6.3%
Lone Star College-Cy-Fair	1,702	9.0%	2,830	13.8%	2,114	9.0%	2,210	8.7%
Lone Star College-Houston North	1,875	N/A	222	11.8%	161	7.7%	168	7.4%
Lone Star College-Kingwood	-1,105	-9.6%	1,141	11.0%	1,016	8.8%	1,135	9.1%
Lone Star College-Montgomery	1,077	8.8%	2,245	16.9%	1,551	10.0%	2,317	13.6%
Lone Star College-North Harris	-4,860	-32.4%	1,112	11.0%	865	7.7%	853	7.0%
Lone Star College-Tomball	-1,458	-20.2%	623	10.8%	593	9.3%	613	8.8%
Lone Star College-University Park	-697	-7.4%	970	11.1%	973	10.0%	972	9.1%
McLennan Community College	-558	-6.7%	975	12.6%	272	3.1%	219	2.4%
Midland College	-650	-12.0%	1,415	29.7%	1,225	19.8%	1,402	18.9%
Navarro College	-2,355	-25.0%	140	2.0%	-51	-0.7%	294	4.1%
North Central Texas College	-1,342	-14.1%	788	9.6%	268	3.0%	689	7.5%
Northeast Texas Community College	54	2.0%	220	8.0%	-78	-2.6%	-20	-0.7%
Odessa College	1,426	25.7%	714	10.2%	1,107	14.4%	1,387	15.8%
Panola College	-135	-5.1%	-46	-1.8%	-10	-0.4%	-23	-0.9%
Paris Junior College	-614	-12.3%	62	1.4%	-25	-0.6%	131	3.0%
Ranger College	252	12.3%	-22	-1.0%	-15	-0.7%	60	2.7%
San Jacinto Community College District	-1,236	-3.8%	4,697	15.1%	3,508	9.8%	3,509	8.9%
South Plains College	-498	-5.3%	413	4.7%	178	1.9%	417	4.4%
South Texas College	-6,284	-18.5%	-250	-0.9%	-1,155	-4.2%	202	0.8%
Southwest Texas Junior College	769	13.7%	95	1.5%	31	0.5%	228	3.5%
Tarrant County College District-Connect Campus	-3,185	-23.7%	677	6.6%	567	5.2%	402	3.5%
Tarrant County College District-Northeast Campus	652	5.7%	654	5.4%	272	2.1%	483	3.7%
Tarrant County College District-Northwest Campus	1,242	16.2%	729	8.2%	116	1.2%	418	4.3%
Tarrant County College District-South Campus	627	8.5%	796	10.0%	225	2.6%	424	4.7%
Tarrant County College District-Southeast Campus	840	8.0%	1,045	9.2%	273	2.2%	660	5.2%

	2015-2020		2020-2025		2025-2030		2030-2035	
	Number	Percent	Number	Percent	Number	Percent	Number	Percent
Tarrant County College District-Trinity River Campus	23	0.3%	634	9.4%	218	3.0%	285	3.8%
Temple College	-541	-10.7%	865	19.2%	395	7.3%	284	4.9%
Texarkana College	-334	-8.1%	17	0.4%	-280	-7.3%	-21	-0.6%
Texas Southmost College	4,748	117.8%	-675	-7.7%	-217	-2.7%	-128	-1.6%
Texas State Technical College in Fort Bend	688	N/A	410	59.6%	42	3.8%	64	5.6%
Texas State Technical College in Harlingen	75	1.6%	422	8.7%	107	2.0%	136	2.5%
Texas State Technical College in Marshall	26	2.9%	255	27.6%	103	8.7%	100	7.8%
Texas State Technical College in North Texas	496	N/A	213	42.9%	84	11.8%	81	10.2%
Texas State Technical College in Waco	603	15.9%	458	10.4%	217	4.5%	211	4.2%
Texas State Technical College in West Texas	1,179	97.4%	345	14.4%	149	5.4%	145	5.0%
Trinity Valley Community College	-1,032	-15.4%	191	3.4%	93	1.6%	410	6.9%
Tyler Junior College	2,439	26.3%	517	4.4%	331	2.7%	444	3.5%
Vernon College	-118	-4.1%	89	3.2%	-43	-1.5%	-20	-0.7%
Victoria College	-805	-20.0%	151	4.7%	36	1.1%	137	4.0%
Weatherford College	-28	-0.5%	274	5.0%	28	0.5%	404	7.0%
Western Texas College	-685	-32.2%	70	4.9%	3	0.2%	83	5.5%
Wharton County Junior College	-1,317	-17.8%	450	7.4%	458	7.0%	755	10.8%
<b>Two-Year Colleges Statewide Totals</b>	<b>-18,974</b>	<b>-2.6%</b>	<b>70,531</b>	<b>10.1%</b>	<b>39,846</b>	<b>5.2%</b>	<b>53,834</b>	<b>6.6%</b>

Source: THECB CBM001; Texas Demographic Center Population Projections, 2018

**Figure 2. Enrollment Forecast Development Process**





This document is available on the Texas Higher Education Coordinating Board website:  
<http://highered.texas.gov>.

**For more information contact:**

Julie Eklund  
Strategic Planning Division  
Texas Higher Education Coordinating Board  
P.O. Box 12788  
Austin, TX 78711  
PHONE 512-427-6533  
FAX 512-427-6147  
[Julie.Eklund@highered.texas.gov](mailto:Julie.Eklund@highered.texas.gov)