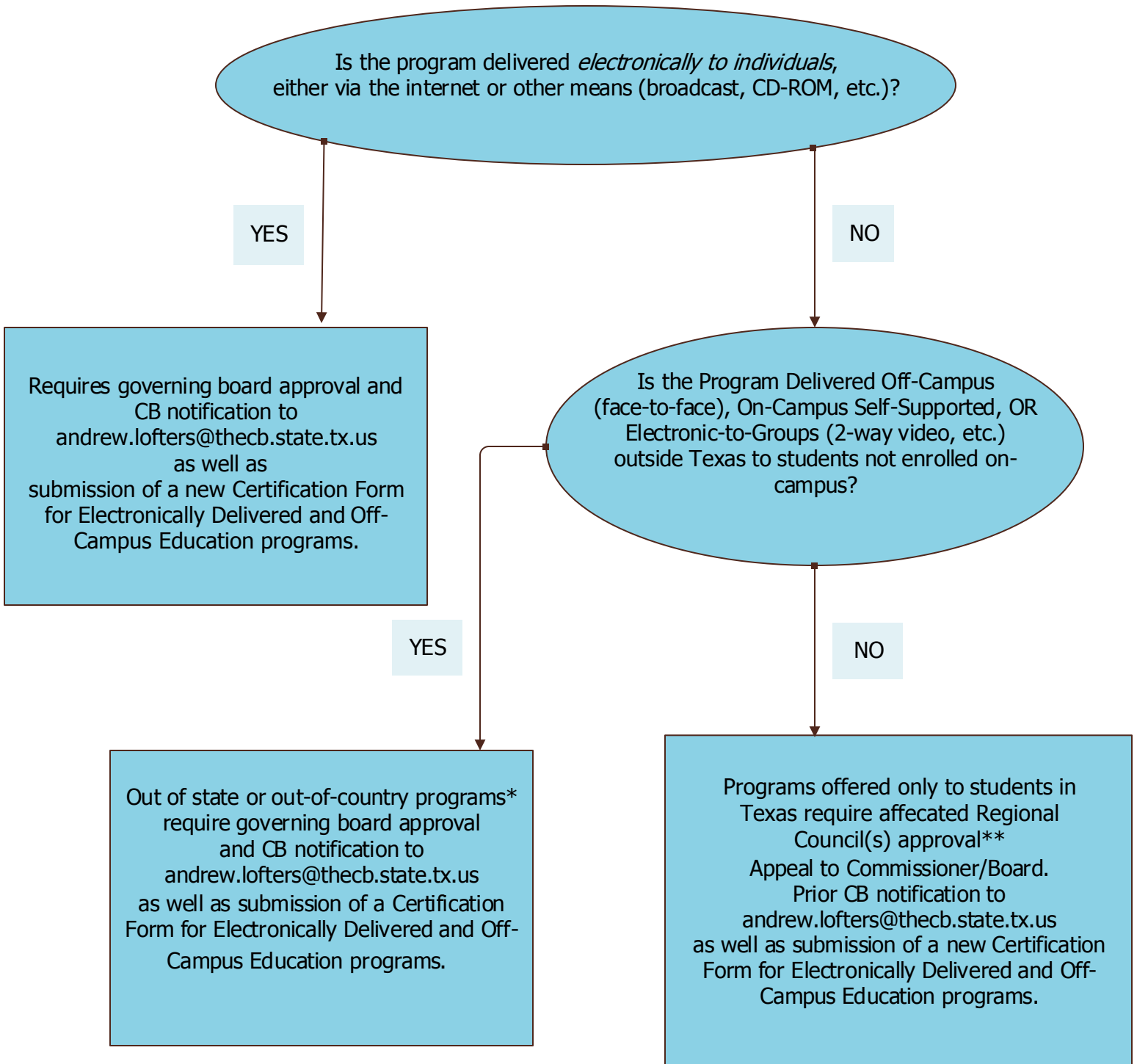


**Texas Distance Education Program Approval Process
 Associate and Certificate Programs
 Community Colleges Out of Service Area, Universities, TSTC,
 Lamar Two-Year and Health-Related Institutions**



*Semester credit hours generated in the courses that compose these programs may not be submitted for formula funding.

**These procedures apply to formula funded and non-formula funded certificate and degree programs delivered for academic credit.