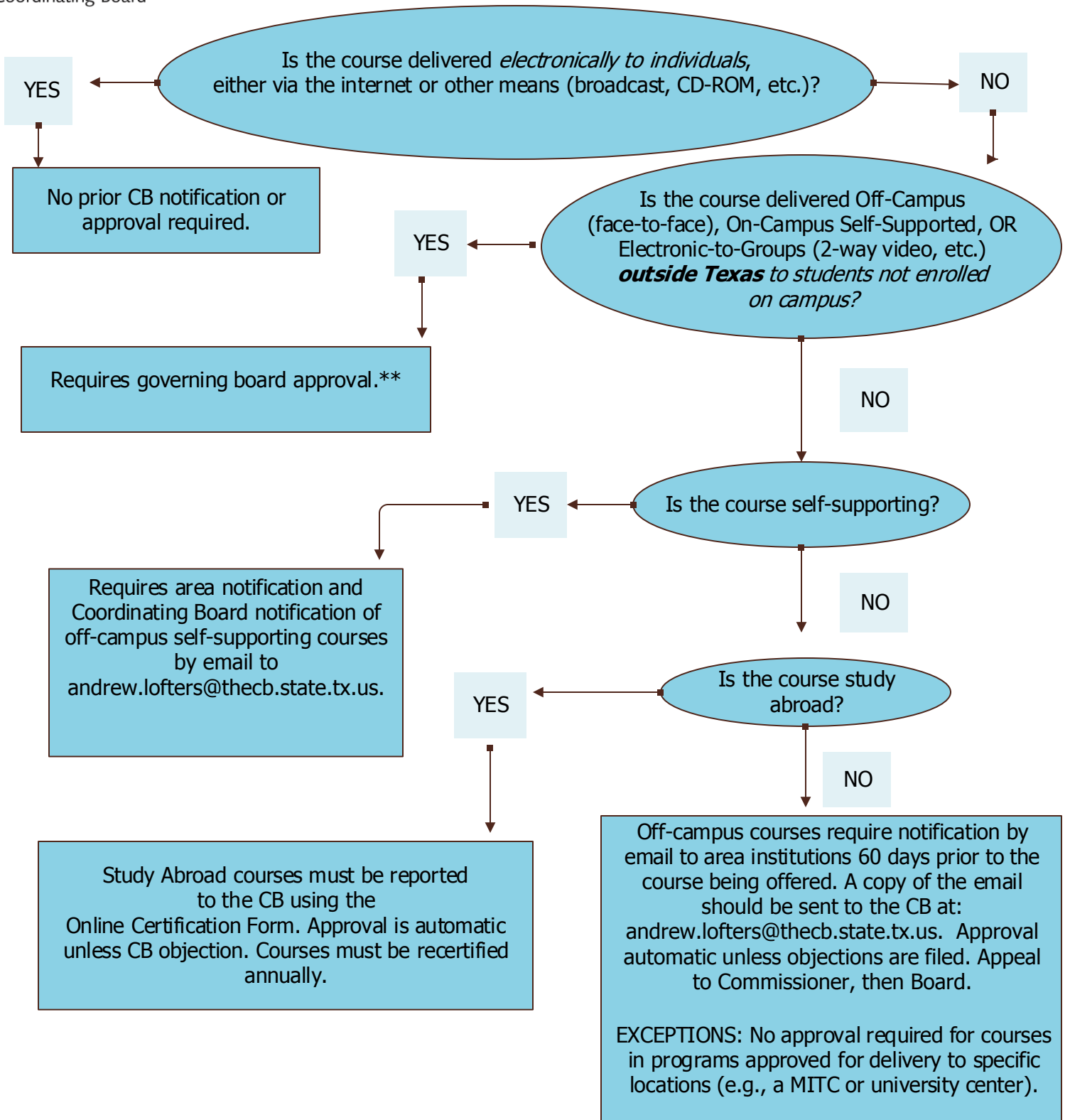


**Texas Distance Education Program Approval Process
 Upper Division and Master's Courses (Except Clinicals)
 Universities and Health-Related Institutions***



*For Institutions with Approved Institutional Reports and Certifying Compliance with Subchapters P and Q and *The Principles of Good Practice*

**Semester credit hours generated in the courses that compose these programs may not be submitted for formula funding.