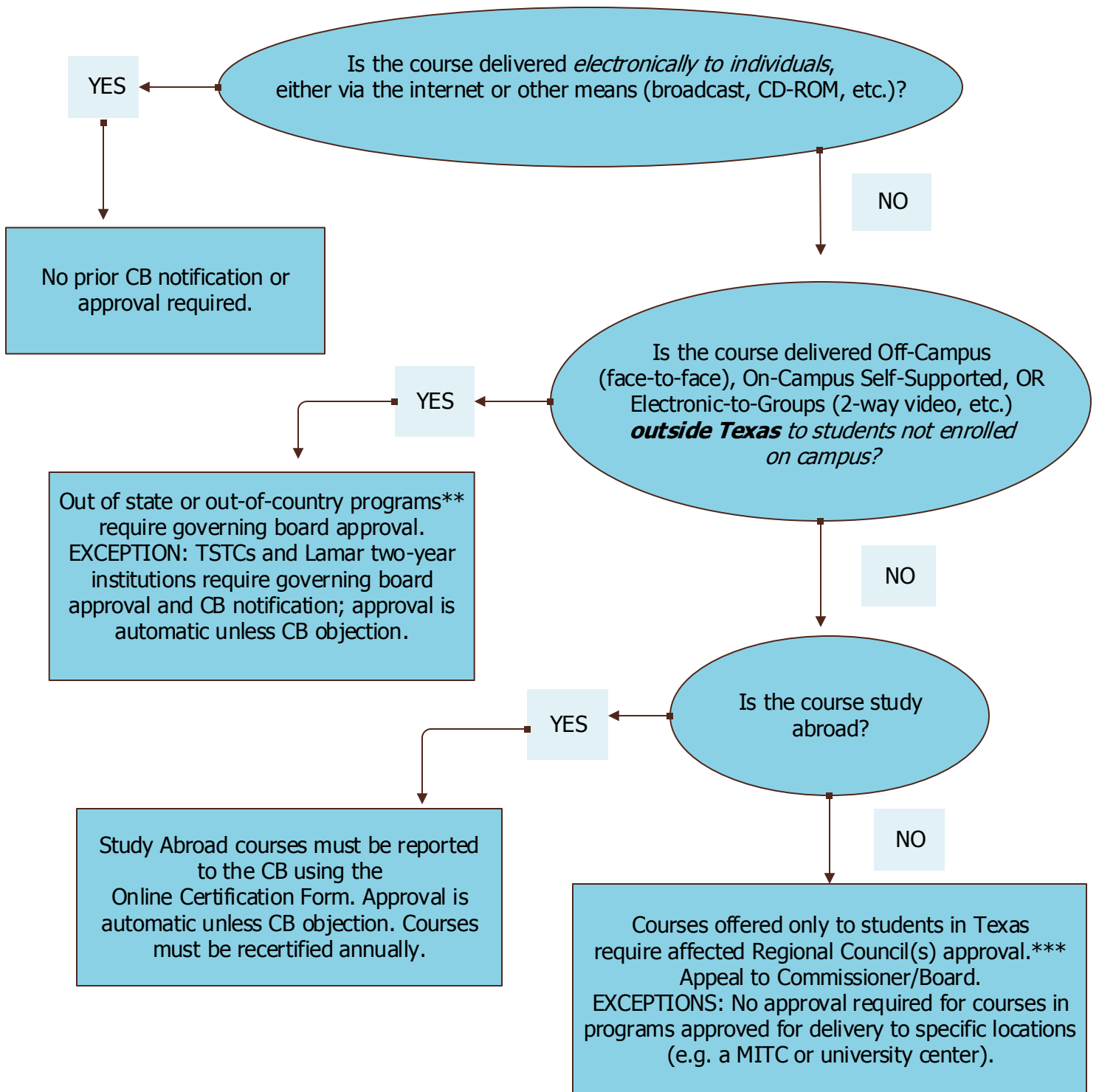


**Texas Distance Education Program Approval Process
 Lower Division Courses (Except Clinicals)
 Community Colleges Out of Service Area, Universities and
 Health-Related Institutions,
 TSTCs and Lamar Two-Year Institutions ***



*For Institutions with Approved Institutional Reports and Certifying Compliance with Subchapters P and Q and *The Principles of Good Practice*

**Semester credit hours generated in the courses that compose these programs may not be submitted for formula funding.

***These procedures apply to formula funded and non-formula funded certificate and degree programs delivered for academic credit.