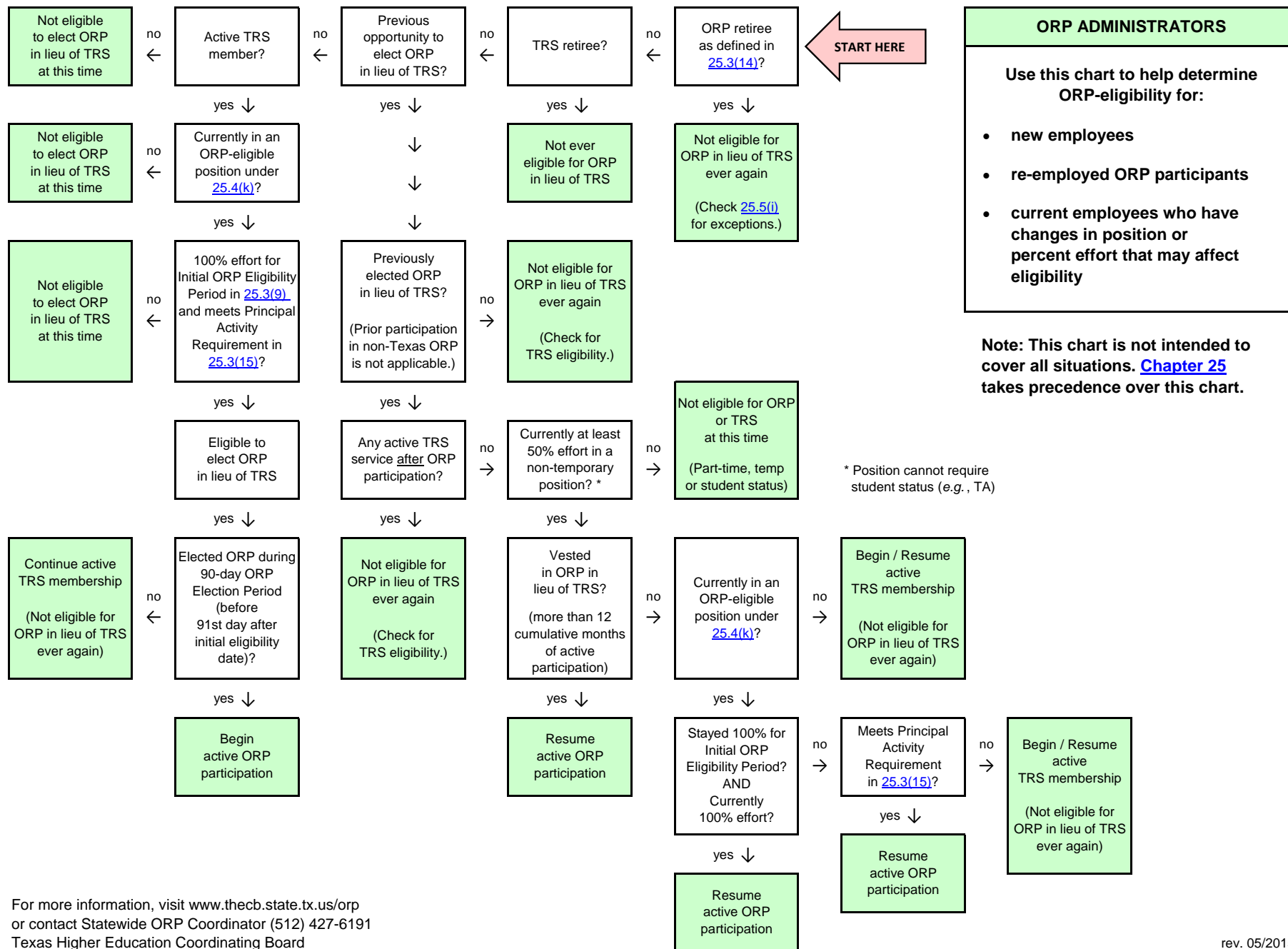


ORP Eligibility Chart

Eligibility to Elect ORP or Resume ORP Participation
at Texas Public Institutions of Higher Education



ORP ADMINISTRATORS

Use this chart to help determine ORP-eligibility for:

- new employees
- re-employed ORP participants
- current employees who have changes in position or percent effort that may affect eligibility

Note: This chart is not intended to cover all situations. [Chapter 25](#) takes precedence over this chart.

* Position cannot require student status (e.g., TA)