

Institutional Presentations: Two-Year Institutions

April 4, 2019

Completions

Dallas CCCD – Eastfield College

Eastfield Completions

- Large urban community college
 - Fall 2018 Enrollment @17,000
- One of 7 colleges in the DCCCD
- Demographics
 - 50% Hispanic
 - 20% African American



Eastfield College

DALLAS COUNTY COMMUNITY COLLEGE DISTRICT

3737 Motley Dr. • Mesquite, TX 75150 • 972-860-7100 • Equal Opportunity Educational Institution

eastfieldcollege.edu

Eastfield Completions

- Our Strategic Plan
 - Goal One
 - Advance Student Access, Equity, and Success
 - Objective – Student Completion
- Focus and Attention
 - Faculty
 - Administration
 - Student Services



Eastfield College

DALLAS COUNTY COMMUNITY COLLEGE DISTRICT

3737 Motley Dr. • Mesquite, TX 75150 • 972-860-7100 • Equal Opportunity Educational Institution

eastfieldcollege.edu

Eastfield Completions

- Administration
 - 8 Week Semesters
 - A Culture of “yes”
- Faculty
 - Know students names
 - Learning communities
 - Overall awareness of completion goes beyond course success



Eastfield College

DALLAS COUNTY COMMUNITY COLLEGE DISTRICT

3737 Motley Dr. • Mesquite, TX 75150 • 972-860-7100 • Equal Opportunity Educational Institution

eastfieldcollege.edu

Eastfield Completions

- Student Services
 - Case Management Advising
 - Workshops for academic probation students
 - Process mapping
 - Early Alert system/Success Coaches
 - Peer Mentor program
 - Beginnings of Guided Pathways



Eastfield College

DALLAS COUNTY COMMUNITY COLLEGE DISTRICT

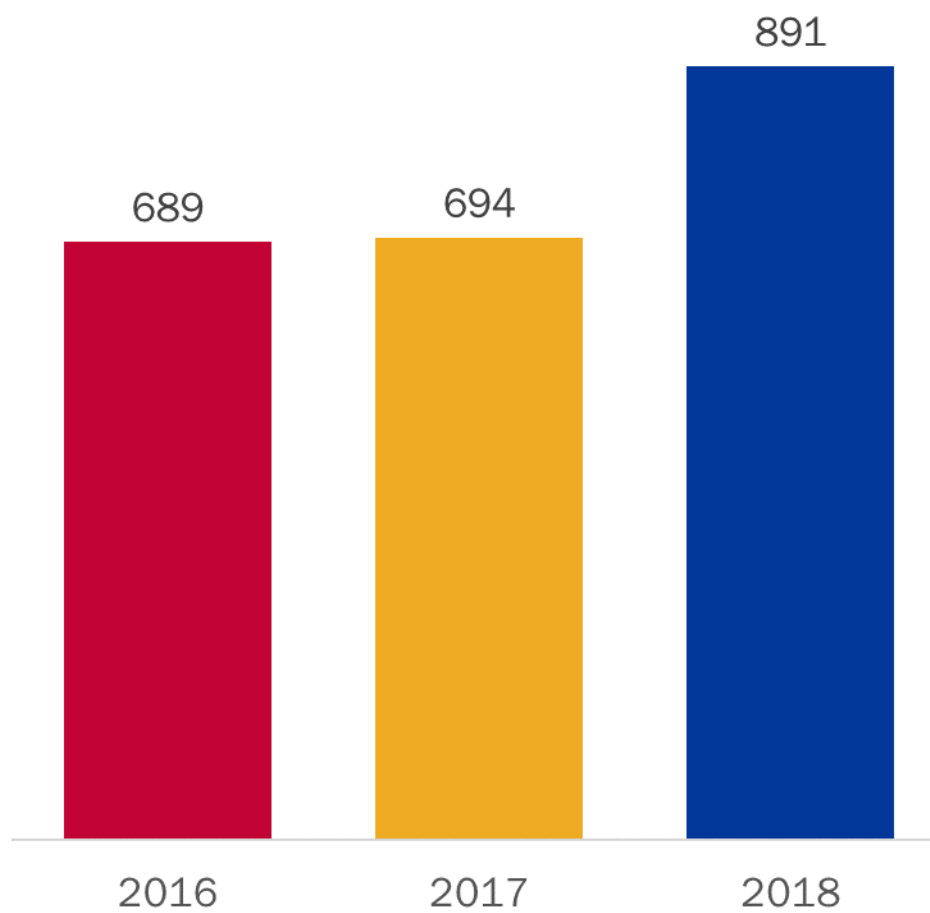
eastfieldcollege.edu

3737 Motley Dr. • Mesquite, TX 75150 • 972-860-7100 • Equal Opportunity Educational Institution

College of the Mainland Community College District

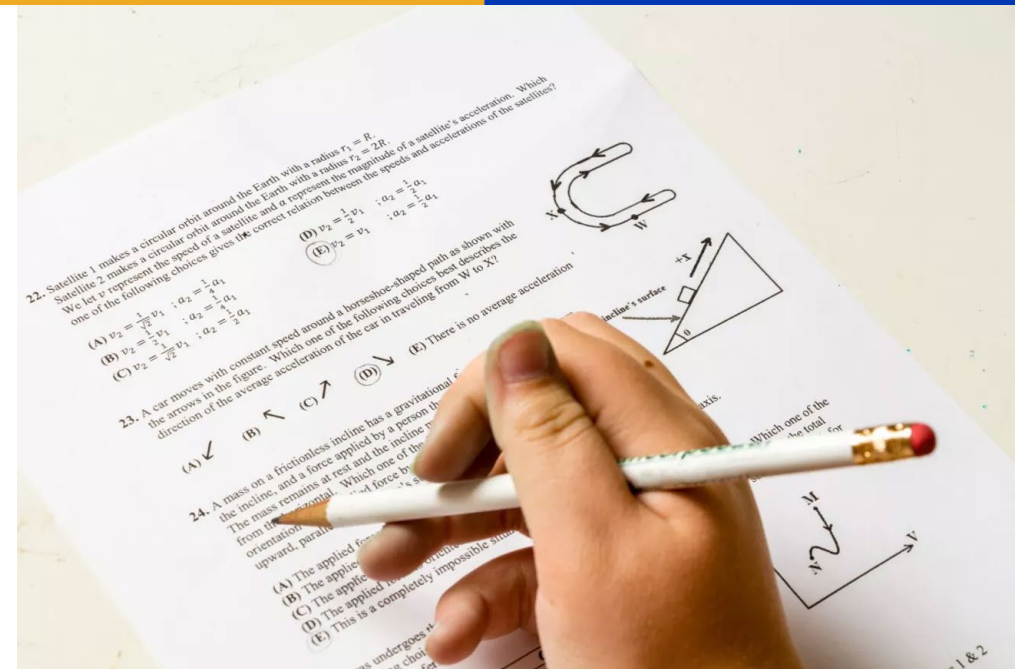


Overall Completions



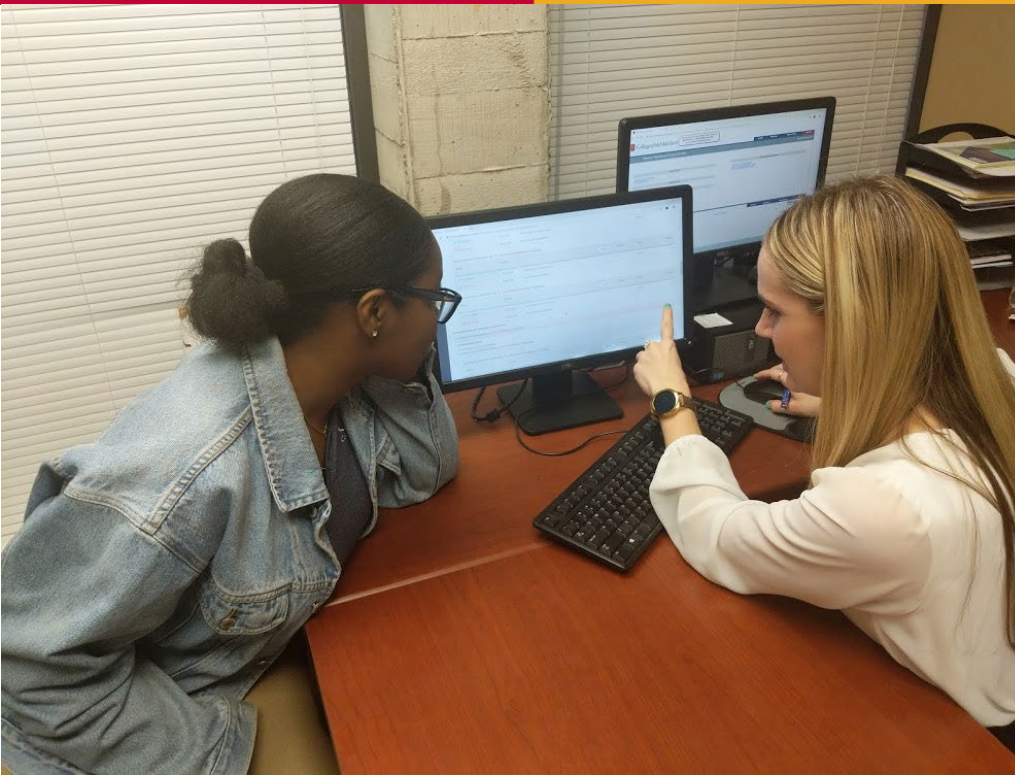
Math Pathways

Corequisite Developmental Courses



Tutoring Redesign

Course Scheduling



Minority Men for Excellence
(MM4E)

Financial Aid

Title V Grant

Advising Redesign

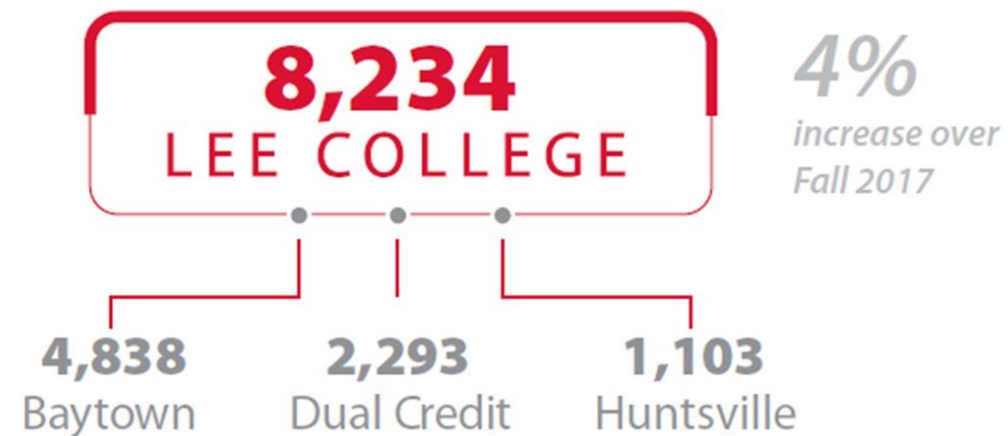


Lee College

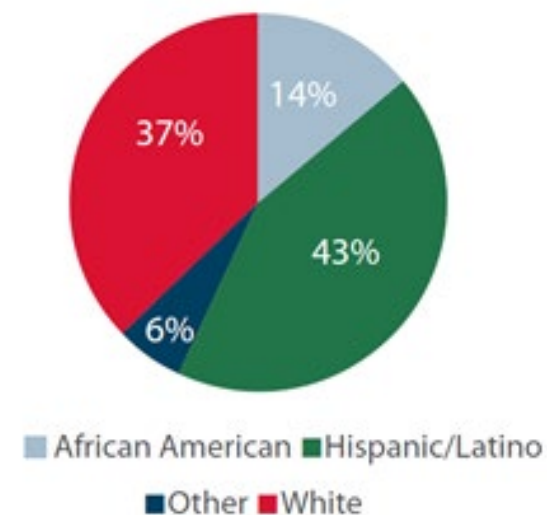


Veronique V. Tran, PhD
Vice President of Instruction

Fall 2018 Enrollment



Ethnicity



Overall Completion

Overall Completion				
	2016	2018	Difference	% Change
Certificate 1	1,224	2,092	868	71%
Certificate 2	29	22	(7)	-24%
Associate	870	1,145	275	32%
Total	2,123	3,259	1,136	54%

College-Wide Strategies

- Registrar: Streamline Processes, Automatic Credential Awarding
- Advising: Caseloads, Early Alert
- Stackable Certificates
- Reverse Articulation with University Partners
- Lee College Foundation Scholarships:
Department, Textbook, Student Success, Completion

African American & Economically-Disadvantaged Completion

African-American Completion				
	2016	2018	Difference	% Change
Certificate 1	224	484	260	116%
Certificate 2	8	4	(4)	-50%
Associate	144	196	52	36%
Total	376	684	308	82%

Economically-Disadvantaged Completion				
	2016	2018	Difference	% Change
Undergraduate Award	561	983	422	75%

Special Programs

- **Huntsville Prison Program:** Male Incarcerated Students
- **Student Activities:** NJCAA Div I Basketball & Volleyball, Intramurals, Man Cave Monday, REAL, Black History, Women's History, Hispanic Heritage Month
- **Education Access & Completion Committees:** Hispanic (HEACC) and Black (BEACC)
- **Men of Color Consortium:** Male Student Leadership Summit, Staff Prof Development
- **Title V Developing H.S.I. Grant:** Focus on All Male Students, Peer Mentoring
- **H.S.I. STEM Grant:** Focus on Hispanic Low Income Students, Puente, STEM Hub, Tutoring, Supplemental Instruction, Pre-Engineering Articulation w/ Lamar University
- **First in the World Grant:** Persistence & Completion of Weekend College Cohort, Completion Coach, Structured Degree Plan [Bellwether Award Finalist]

Texas Southmost College



TEXAS SOUTHMOST
COLLEGE

Texas Southmost College

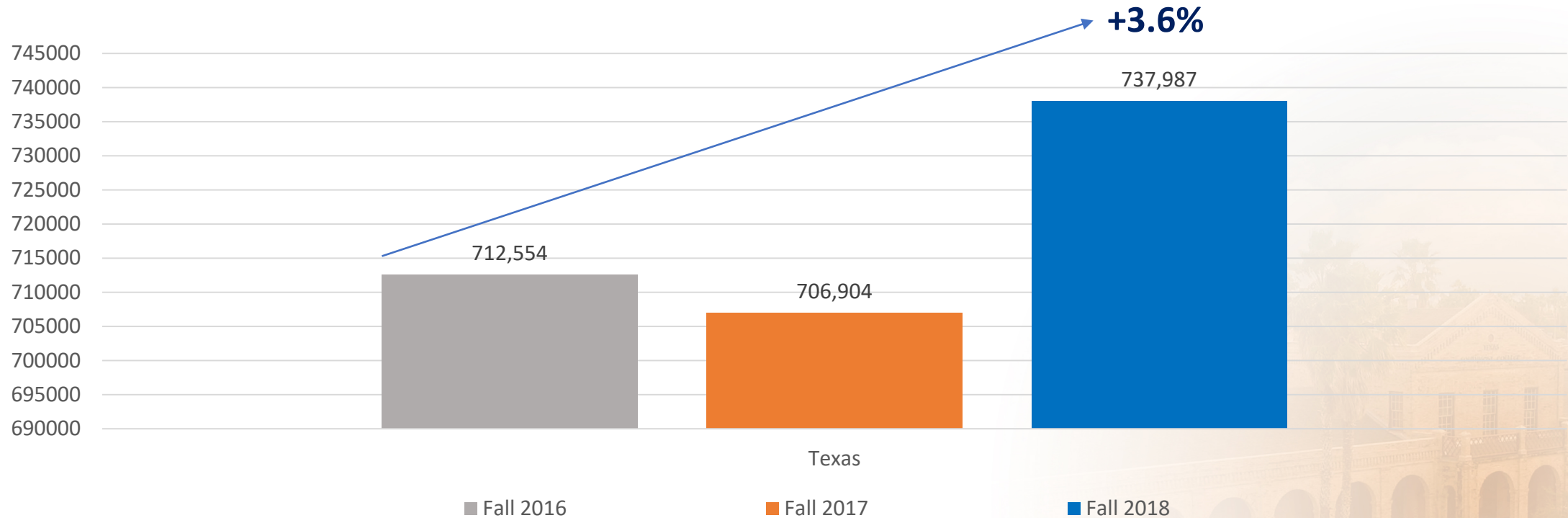
Presented by:

Dr. Jesús Roberto Rodríguez, Ph.D., President

Mr. Oscar O. Hernández, Executive Director of IR & Compliance



Enrollment Headcount % Increase
All Students
Fall 2016 to Fall 2018

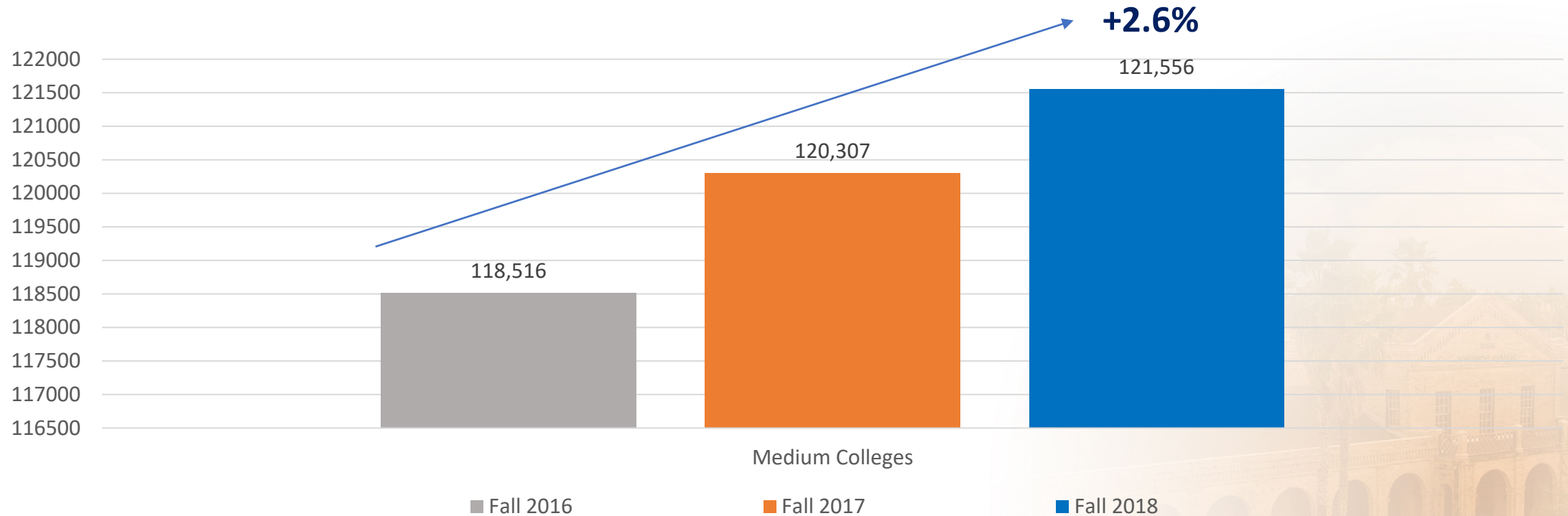


All 22 Medium Colleges

Enrollment Headcount % Increase

All Students

Fall 2016 to Fall 2018

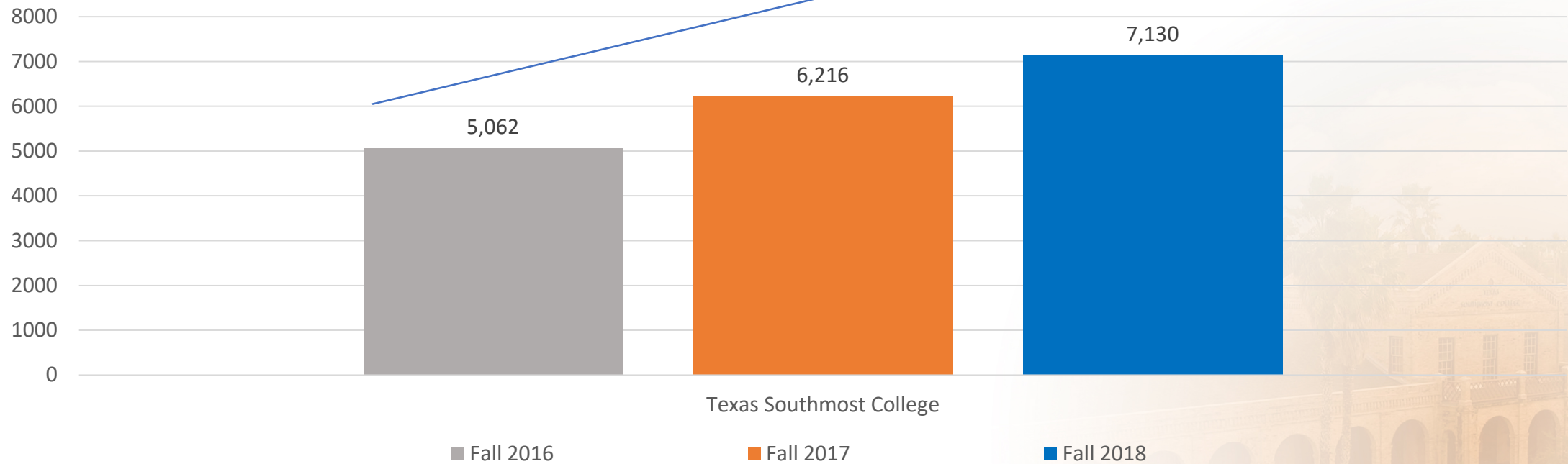


Enrollment Headcount % Increase

All Students

Fall 2016 to Fall 2018

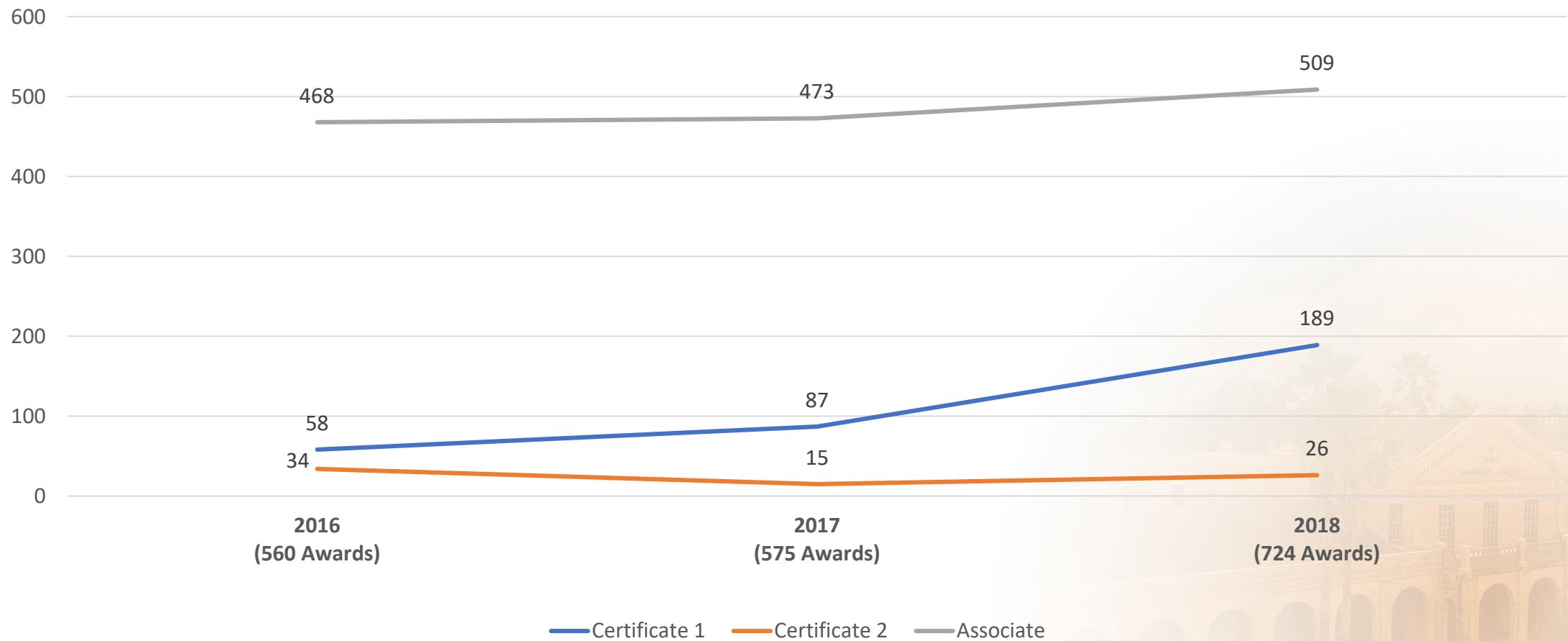
+40.9%



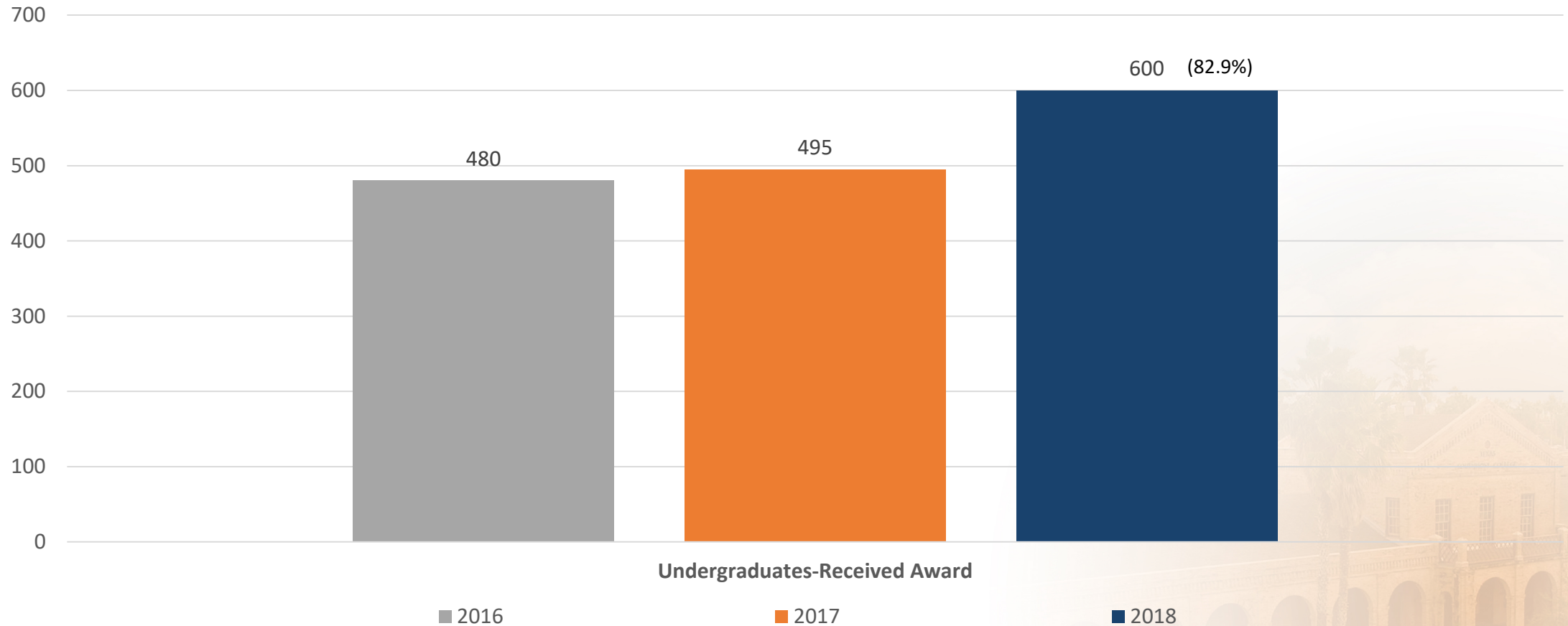
All Students Fall 2016 to Fall 2018

College or Sector	Percent Change
All 50 Texas Colleges	3.6%
All 22 Medium Colleges	2.6%
Texas Southmost College	40.9%
On-Campus - Only	8.6%
Dual Credit - Only	220%

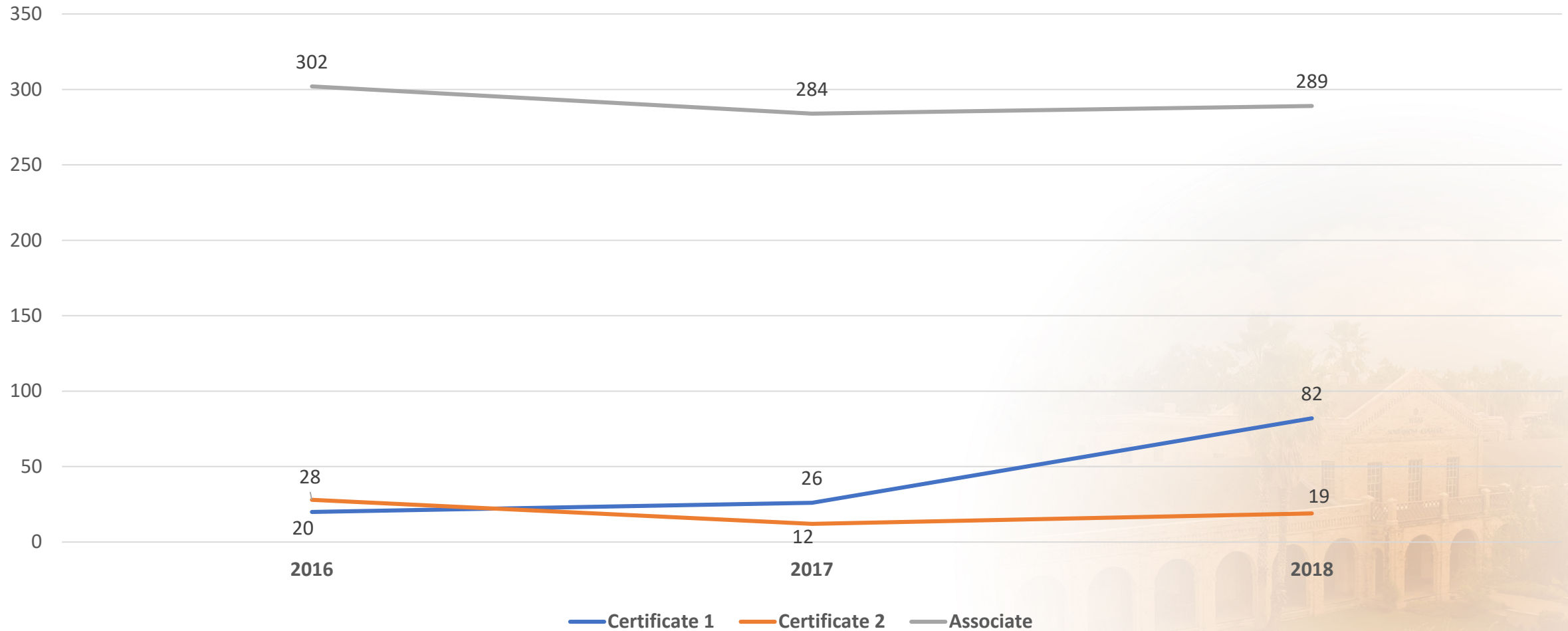
Degrees and Certificates Awarded



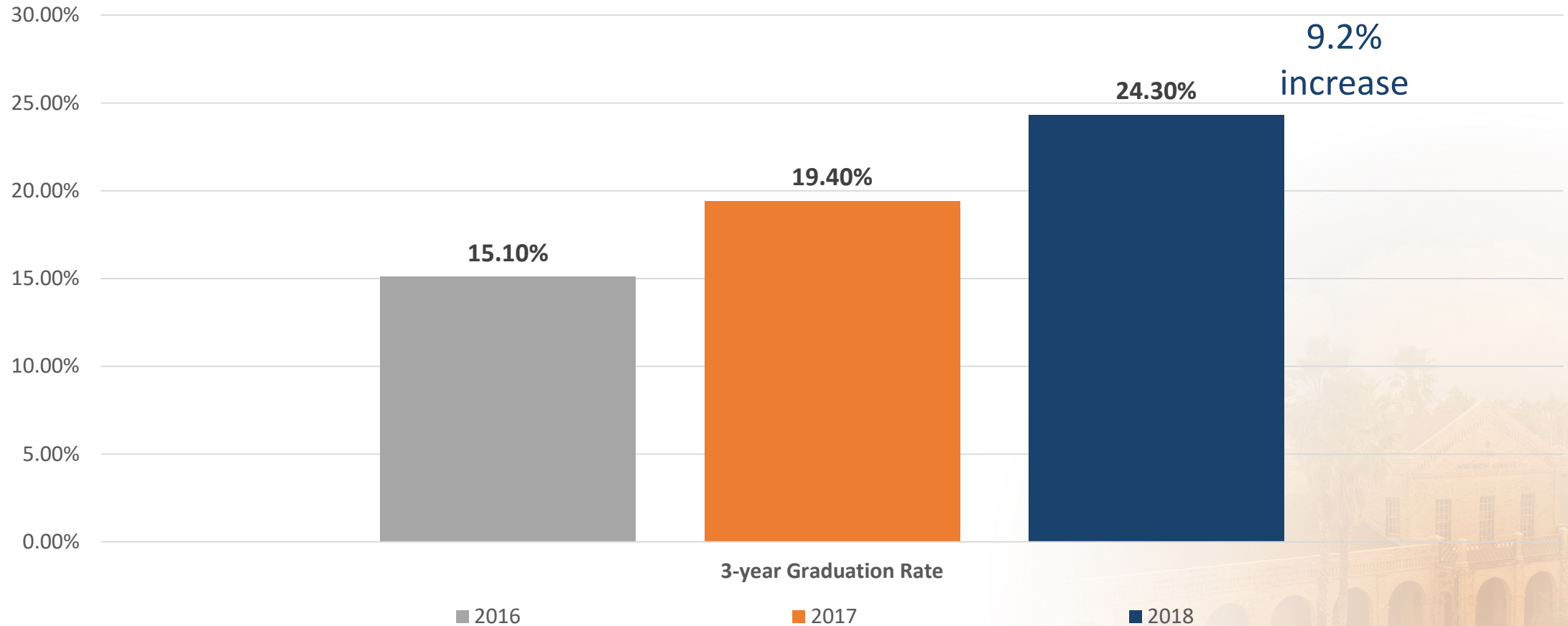
Economically-disadvantage Completion



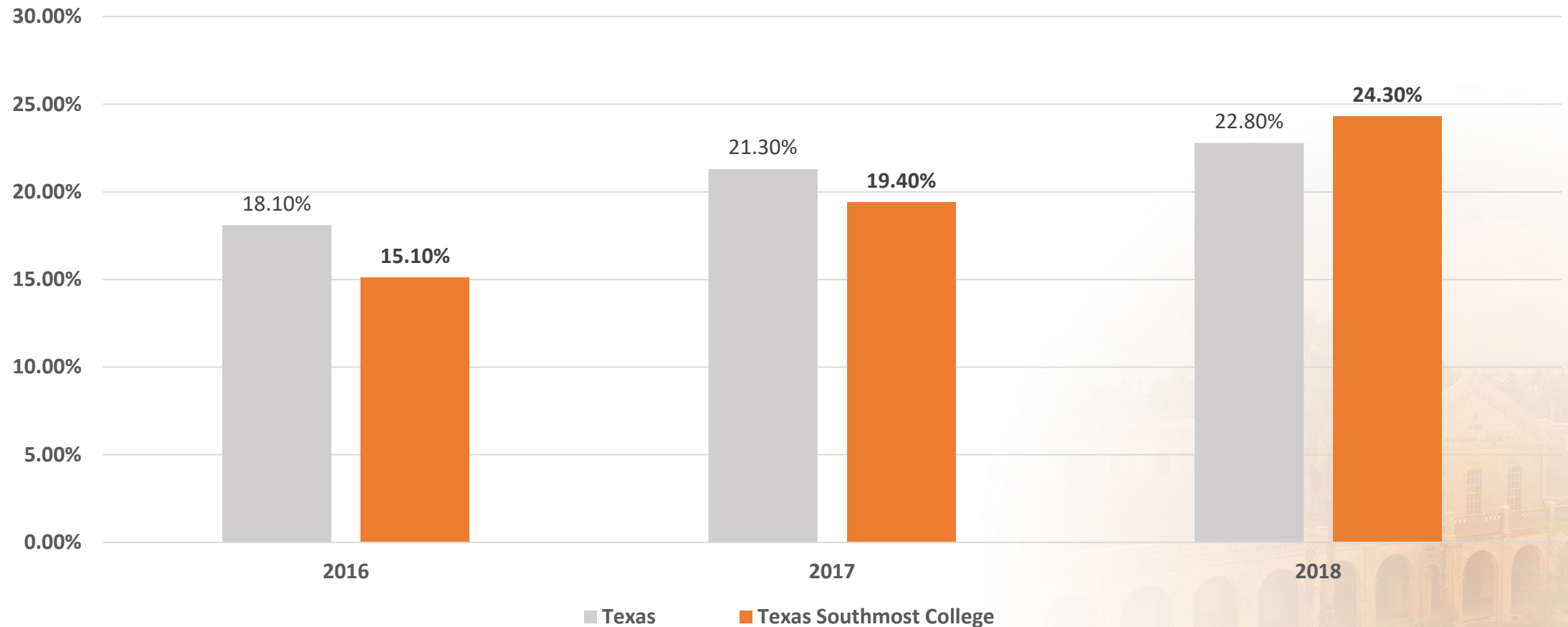
Male Completion



3-year Graduation Rate



Comparison Between State of Texas & Texas Southmost College



Initiatives

- Guided Pathways to Completion
 - Program of Study review
 - Pre-requisites and Co-requisite review
 - Course alignment
- Development Education Co-requisites
- Male Summit



Graduation Rates

Amarillo College



Amarillo College

Institutional Spotlight

Dr. Tamara Clunis
Vice President Academic Affairs
@acvpaa

Innovate / Challenge

Disrupt / Change

Reset / Question

Re-imagine / Re-invent

Theory of Change

1. Removing a life barrier
2. In an accelerated learning environment
3. Through a deep culture of caring

 **Equals Completion**

Amarillo College

No Excuses 2020

Creating a Culture of Caring Across the Campus

**Accelerate
Learning
Systems**

**Data Analytics
& Predictive
Modeling**

**Eradicate
Student Poverty
Barriers**

Our Student

71% First Generation

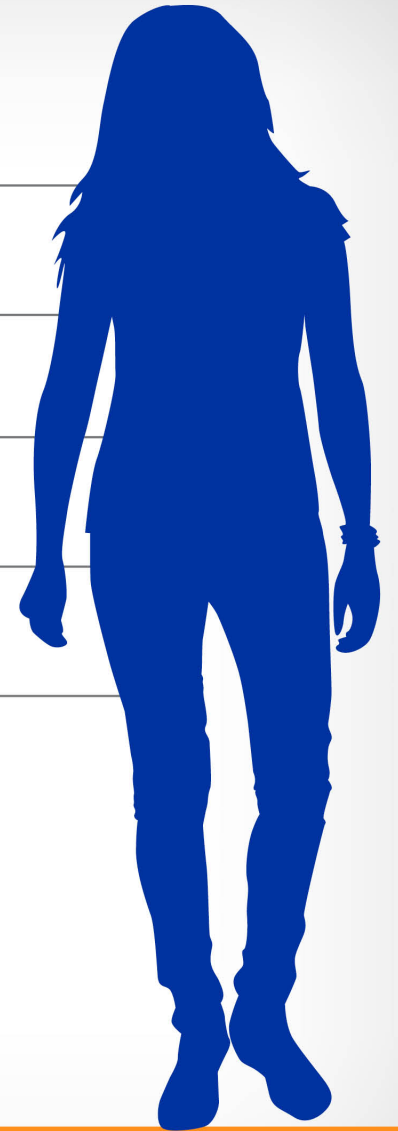
55% Part-time

55% Minority

65% Female

54% Financial Aid

52% Transfer Focus



Regional University Collaborations

West Texas A&M

Shift in Transfer Strategy with Advising and Registrar

Robust Data Sharing (Student Planning, Transcripts)

Data Mining for FOS Completions and Associate Degrees

Early Community Connections to Transfer Institution

Shift in Strategy with Academic Affairs

Curriculum Revisions to FOS

Philosophy Shift toward Reverse Transfer

Academic Outreach – Diplomas and Degrees

Regional University Collaborations

Texas Tech University

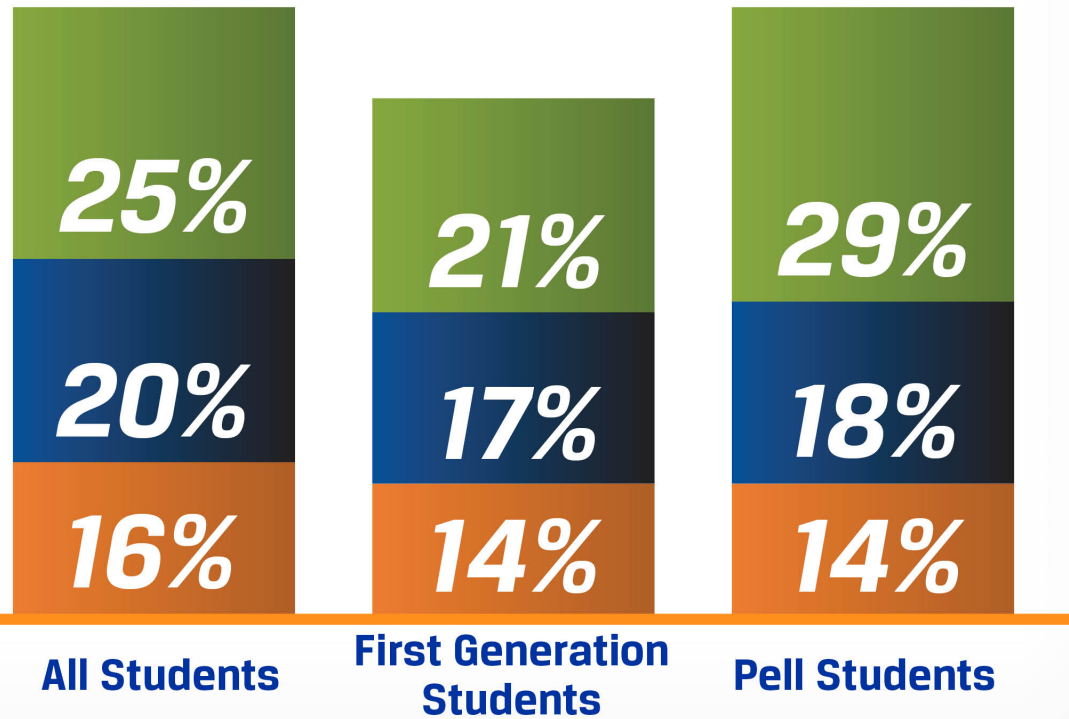
Collaboration in Program Development aligned to FOS
STEM Research Center

3-Year Transfer Rate

Growth Rate

Fall 2015

Fall 2011

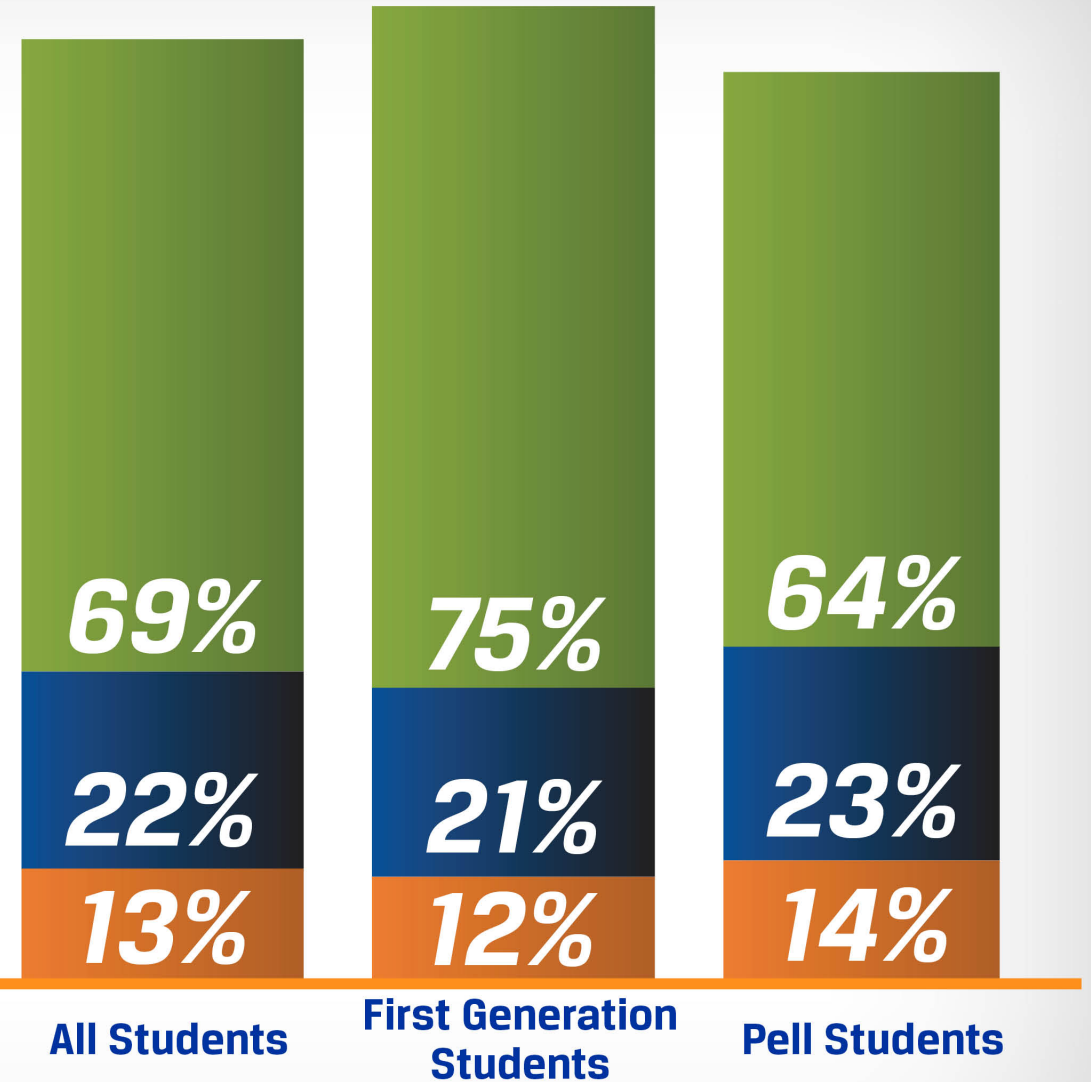


3-Year Graduation Rate

Growth Rate

Fall 2015

Fall 2011



*Five Year
Completion
Goal: 70%*

48%

*We are well on track
with close to two-thirds
completion to goal
in only three years*

Data Sources: AC Office of Institutional Research, THECB Almanac, AC CCSSEE



Questions?

Dr. Tamara Clunis

Vice President Academic Affairs

@acvpaa

806/371-5226

ttclunis@actx.edu

Texarkana College

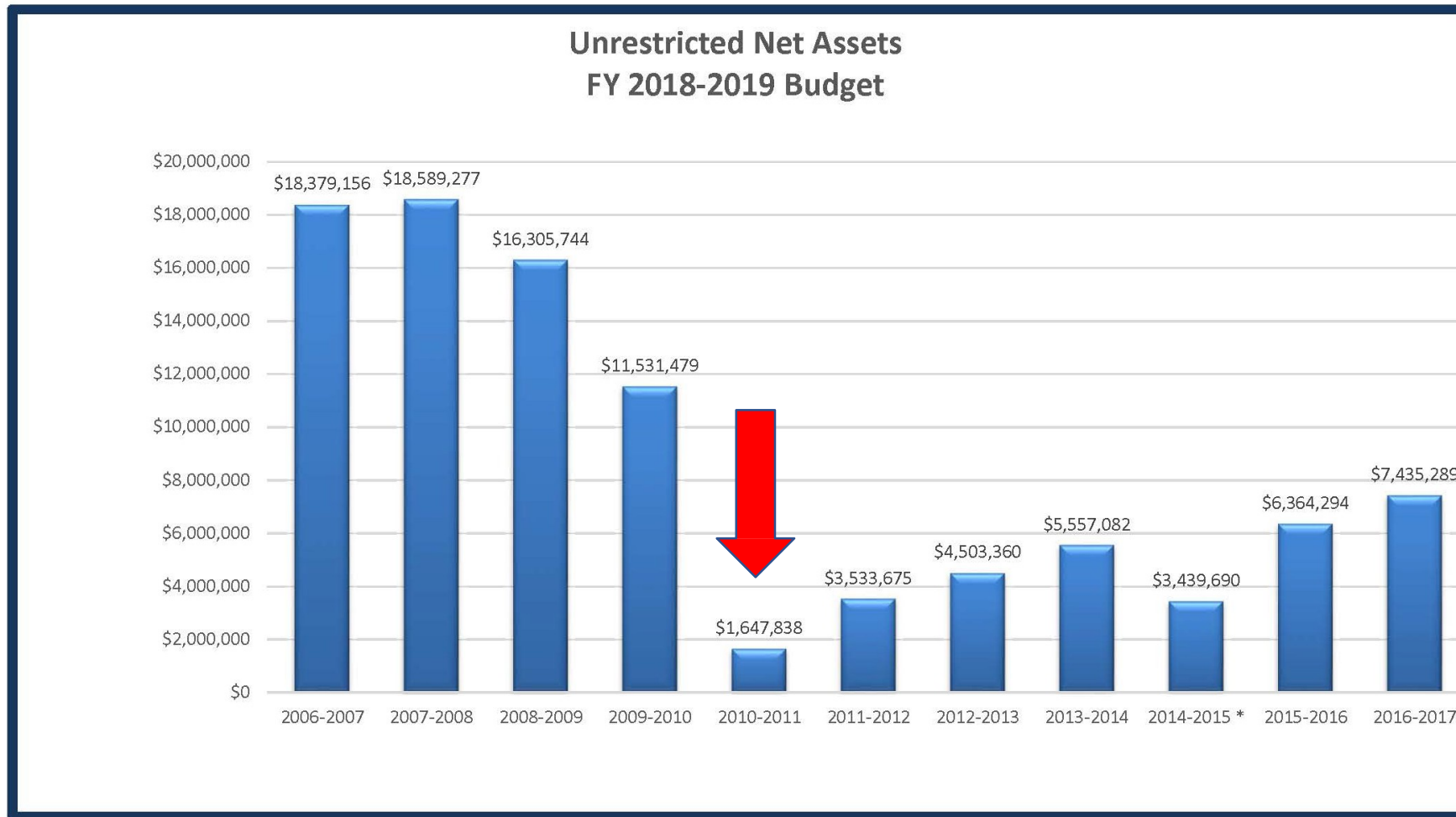


CONNECTING THE WORK TOWARD PERSISTENCE & COMPLETION



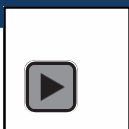
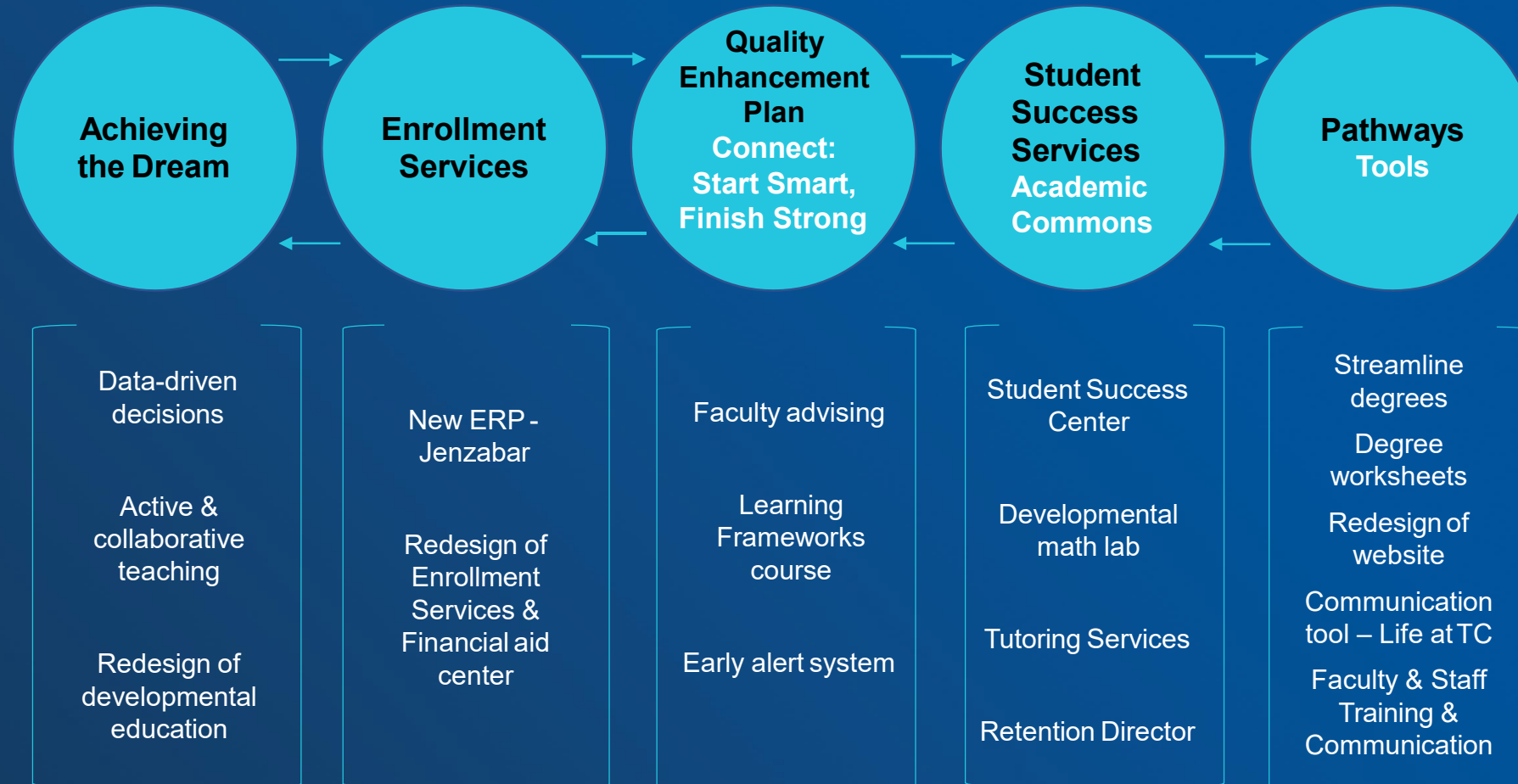
Dr. Jason Smith, President
Dr. Donna McDaniel, Vice President of Instruction
Presented by Phyllis Deese, Vice President of Administrative Services

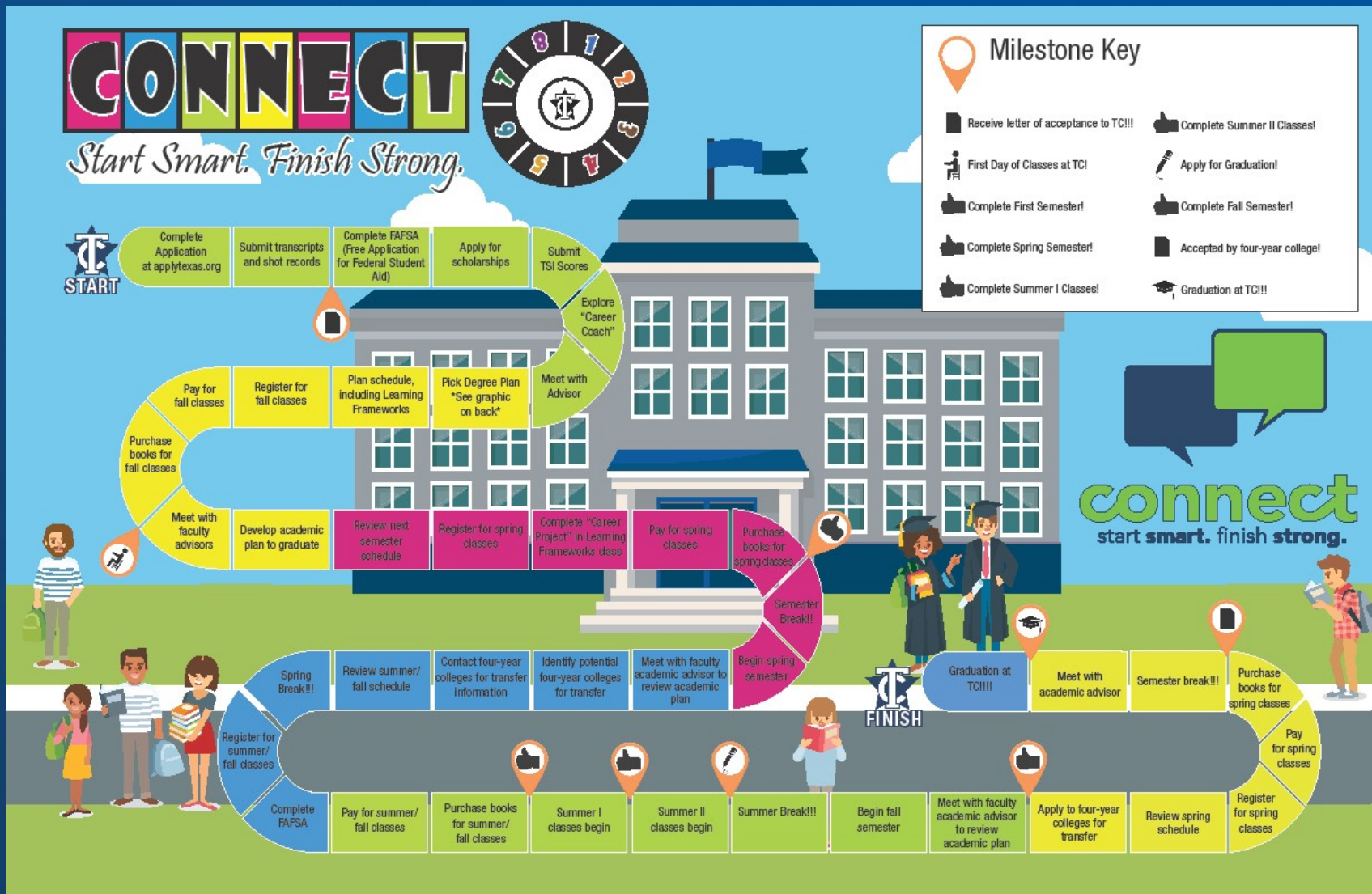
ACCREDITATION & FINANCIAL CHALLENGES



* Decrease in 2014-2015 due to implementation of GASB 68.

CONNECTING THE WORK TOWARD PERSISTENCE & COMPLETION





Connect Pathways and Webpage Available Online at:
<https://www.texarkanacollege.edu/current-students/>

TC Graduation Rates

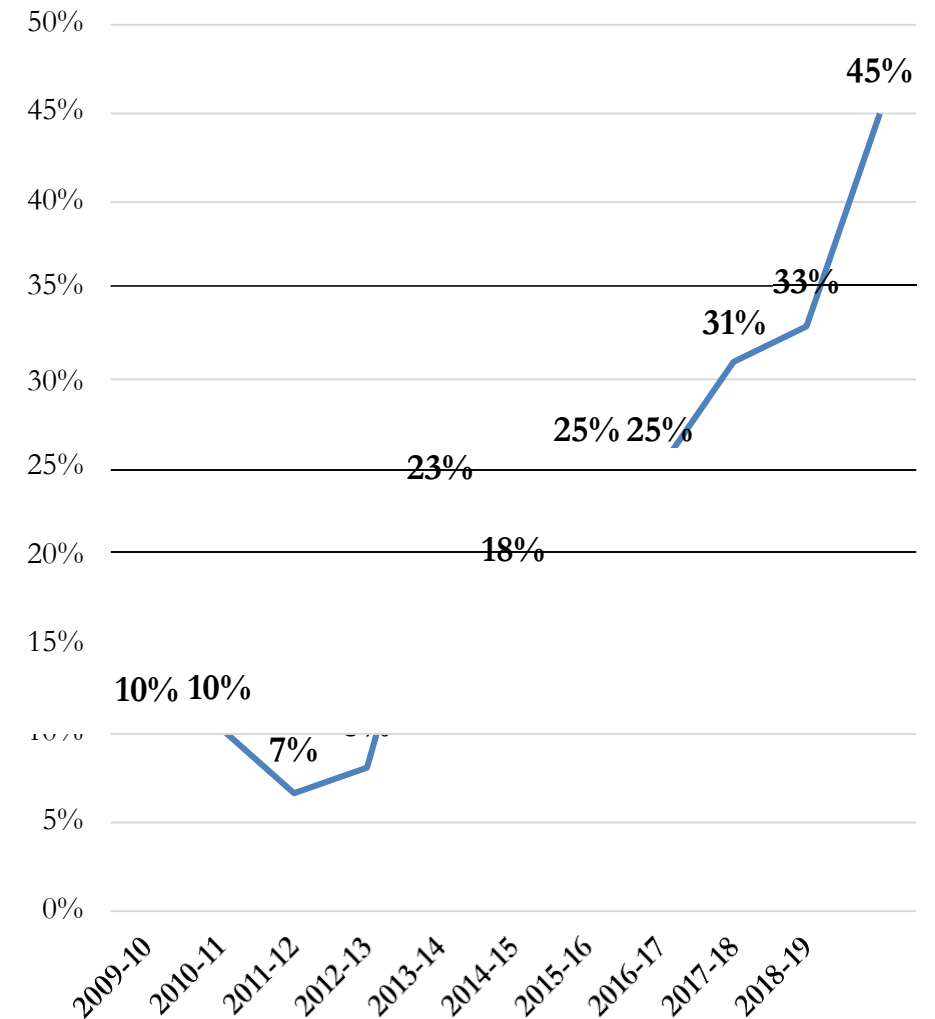
Accountability			
Year	3-yr	4-yr	6-yr
2004	11.4%	16.5%	30.9%
2005	10.2%	16.5%	27.7%
2006	11.7%	15.4%	25.5%
2007	12.6%	16.8%	26.2%
2008	11.1%	19.2%	31.0%
2009	11.6%	15.4%	26.5%
2010	15.2%	16.0%	28.6%
2011	10.1%	21.2%	24.0%
2012	8.6%	14.7%	24.2%
2013	10.8%	13.1%	28.6%
2014	18.7%	15.5%	20.7%
2015	32.7%	24.0%	20.6%
2016	32.1%	39.2%	25.3%
2017	34.7%	36.5%	30.1%
2018	45.8%	39.2%	46.3%

	2015 Cohort year
	2014 Cohort year
	2013 Cohort year
	2012 Cohort year
	2011 Cohort year
	2010 Cohort year

Source - THECB

Graduation Rate 150%

Source - IPEDS



Texas State Technical College – West Texas

Program Vitality

4 Disciplines of Execution

Lance Eastman

Sr. Vice President Student Learning



Vitality Scorecard: Emergency Medical Services

Report Date: 09-01-2018

Major Description

Emergency Medical Services



Statewide by Major

Statewide

Major by Location



Overall Vitality Score

1.92

Avg 1st Yr Wage FY '16 Graduates

40,362

Avg 5th Yr Wage FY '12 Graduates

55,274

Net Contribution Margin

-107,785

Annual Unduplicated Student Count

115

Semester Credit Hours

1,526

Wage Growth: 17% of Score

45,968

104%

FY '11-'13

47,840

FY '14-'16

Major 1st Year Average

31,757

105%

FY '11-'13

33,251

FY '14-'16

TSTC 1st Year Average

NCM/SCH: 25% of Score

306,483

Total Revenue

+

15,887

Tuition Waivers

-

430,155

Total Expenditures

=

(107,785)

Net Contribution Margin

/

1,526

Semester Credit Hours

=

(71)

NCM/SCH

66

NCM/SCH
TSTC Wide

Percent of Grads Found Working: 17% of Score

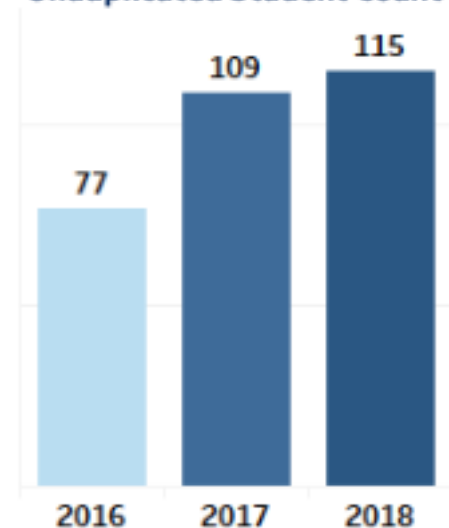
Major

89%

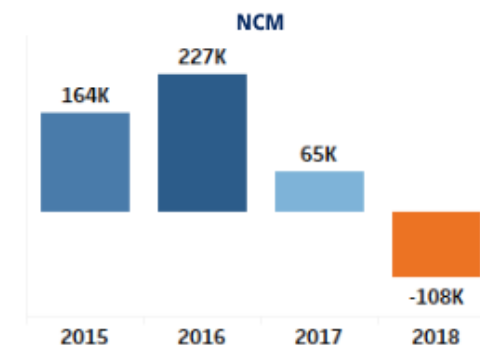
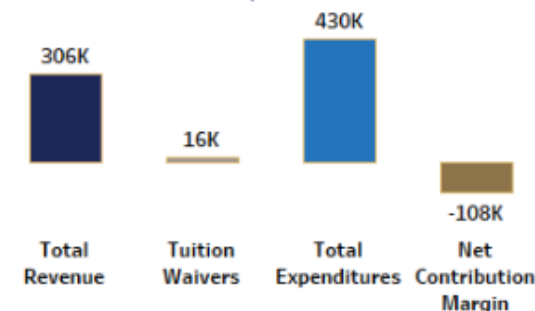
TSTC Statewide

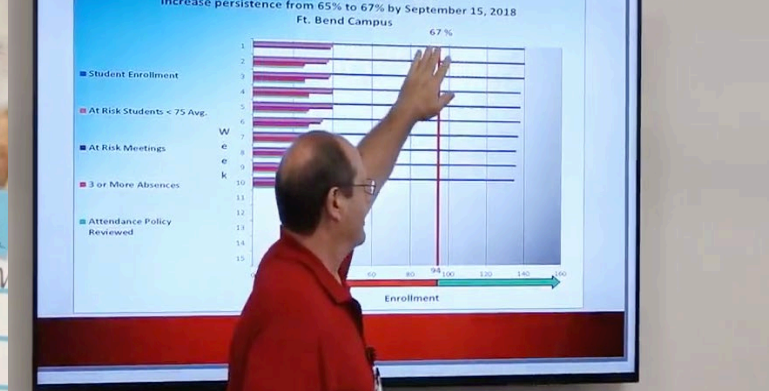
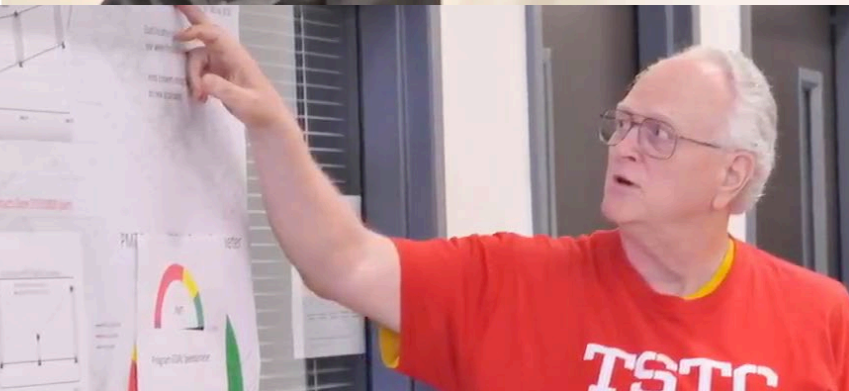
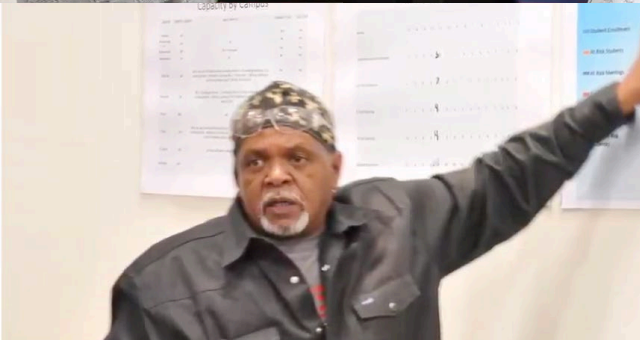
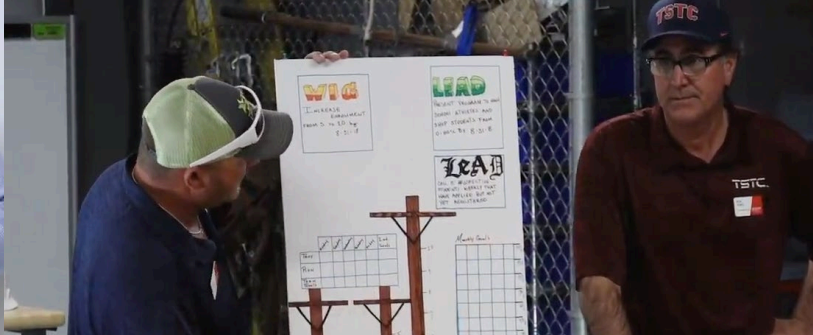
81%

Unduplicated Student Count



Revenue + Tuition Waivers - Expenses = Net Contribution Margin





Emergency Medical Services