

The background of the cover is a collage. It features a low-angle shot of a modern skyscraper with a glass facade reaching into a blue sky with white clouds. Overlaid on this are several red geometric shapes: a large circle on the left and several triangles of various sizes. A faint, light-red map of Houston is visible in the background, showing street names like 'LA PORTE RD', 'VINCENNE', 'ALLEN-GENDA', and 'WINKLER'.

HOUSTON GPs

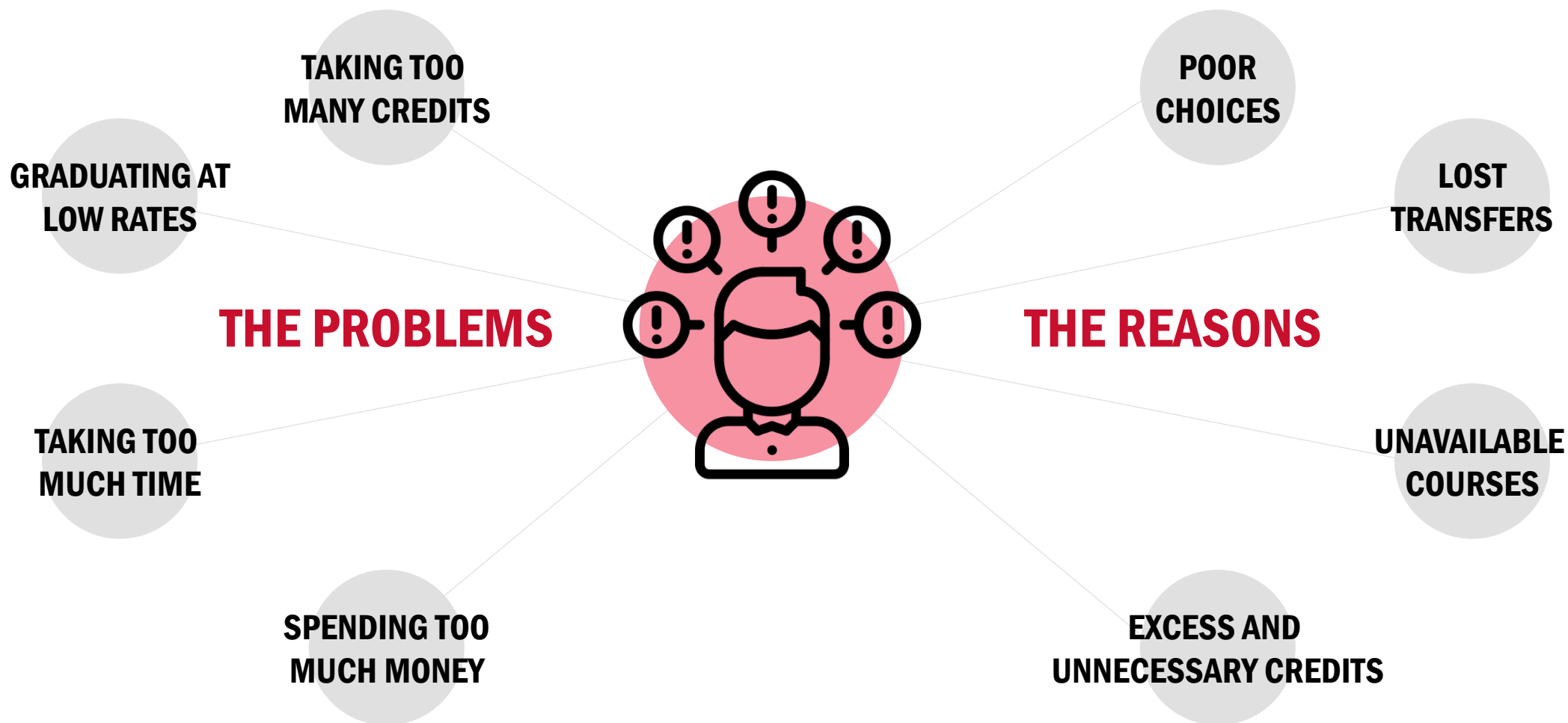
GUIDED PATHWAYS TO SUCCESS

ADOPTED BY
HOUSTON CITY PLANNING COMMISSION
NOVEMBER CITY, NINETEEN HUNDRED FORTY TWO

John R. Anderson CHAIRMAN
John R. Anderson CHAIRMAN

MEMBERS OF COMMISSION
JESSE ANDREWS, CHAIRMAN
MARTIN BROOKS, VICE-CHAIRMAN

PLAN COVERING AREA OUTSIDE
OF HOUSTON WAS PREPARED
IN COLLABORATION WITH
HUGH W. R. ZAPP





PARTNERSHIPS

COLLABORATIVE PARTNERSHIP WITH THE FOLLOWING
FOUR AND TWO YEAR INSTITUTIONS

UNIVERSITY of
HOUSTON

UHV
UNIVERSITY OF
HOUSTON - VICTORIA

COM
College of the Mainland

TSU
TEXAS SOUTHERN UNIVERSITY

UHD
University of Houston
DOWNTOWN

VC VICTORIA
COLLEGE
Est. 1925

ACC
ALVIN COMMUNITY COLLEGE

SJ SAN JACINTO
COLLEGE
Your Goals. Your College.

HCC
HOUSTON COMMUNITY COLLEGE

LONE STAR
COLLEGE

WJC Wharton County
Junior College

UCL
University
of Houston
Clear Lake

GC
Galveston
College



GOALS

Provide a timely, structured, and seamless pathway for students transferring from Gulf Coast-Houston area community colleges to Houston area universities.

Boost postsecondary attainment, and **increase completion and successful transfer rates** in the Houston region.

Build a culture of timely graduation that will **save everyone time and money**, most importantly our students.





Houston GPS

Guided Pathways to Success for Houston-area College Students

Memorandum of Understanding

This Memorandum of Understanding is entered into by and between Complete College America and the University of Houston, the University of Houston Downtown, the University of Houston Clear Lake, Houston Community College, Lone Star College System, San Jacinto College District, and Wharton County Junior College to establish an agreement for collaboration and consultation in support of the implementation of Houston GPS.

All signatories to this agreement understand that Houston GPS is an integrated system of cohesive strategies that must be implemented collectively in order to accomplish the full benefits of the effort, namely significant improvement in college completion rates and substantial narrowing of attainment gaps. Accordingly, all institutions participating in Houston GPS will apply maximum effort toward implementation of all of the component strategies listed below.

Further it is understood that a steering group composed of the chancellors and presidents of the participating institutions will in consultation with Complete College America, the final decisions relative to the development of the comprehensive strategies that guide Houston GPS. Chancellors and presidents will designate working groups that operationalize and implement the strategies.

This agreement shall be effective beginning with the date of the last signature appearing upon the satisfactory implementation of Houston GPS.

Houston GPS participants shall implement:

ALIGNED MATHEMATICS


- All programs of study will contain mathematics most appropriate for associated careers. Programs that do not require Calculus should not include College Algebra.


Stan Jones, President, Complete College America


7/10/14
Date


President, University of Houston

7/10/14
Date


President, University of Houston Downtown

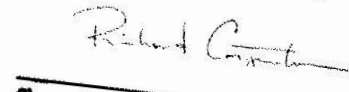
7/16/2014
Date


President, University of Houston Clear Lake

7/9/14
Date


Chancellor, Houston Community College

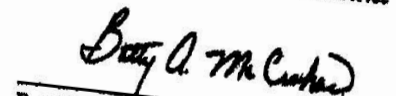
07/14/14
Date


Chancellor, Lone Star College System

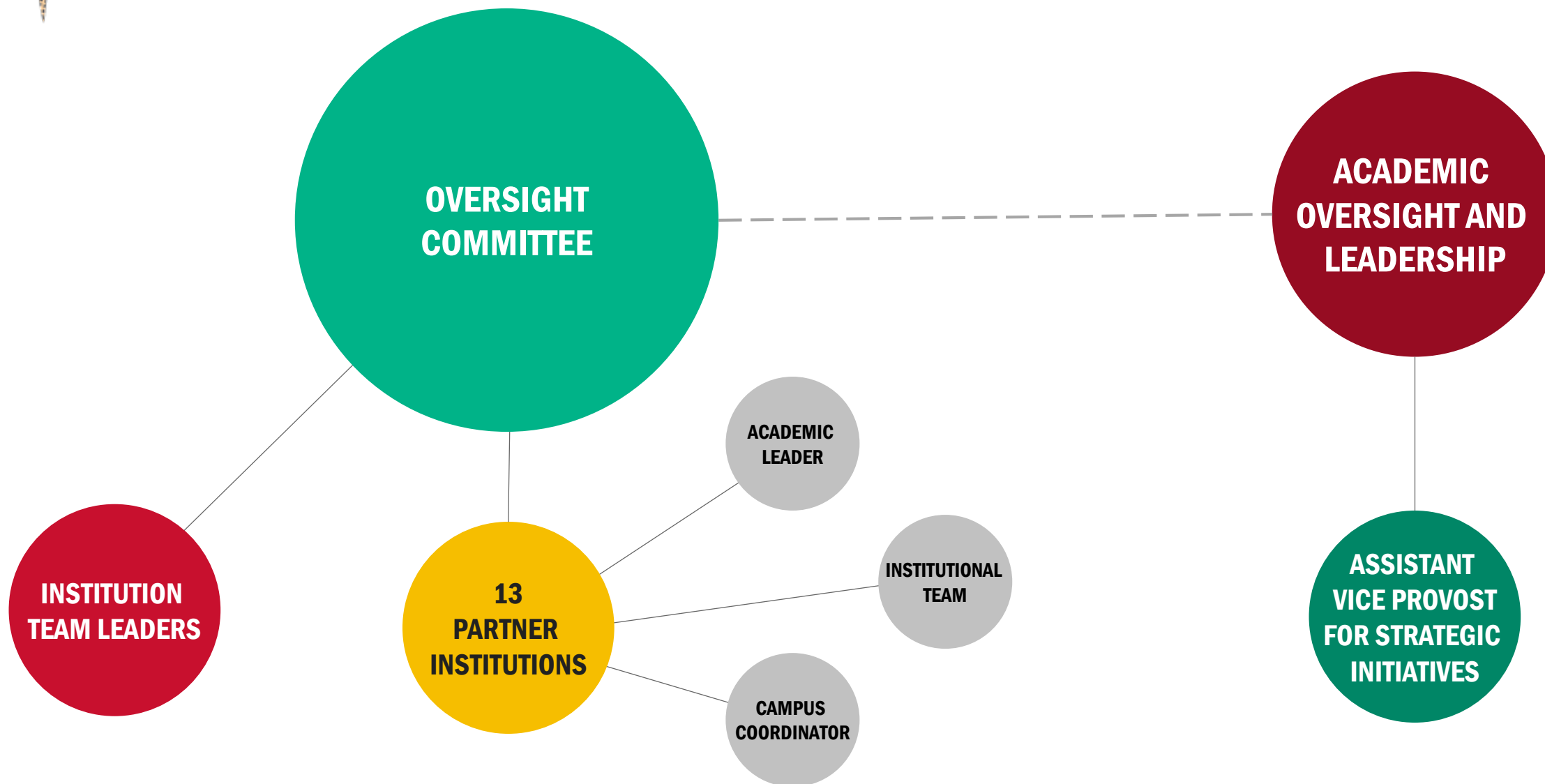
7.15.2014
Date


Chancellor, San Jacinto College District

7/15/14
Date


President, Wharton County Junior College

7/11/14
Date



STRATEGIES

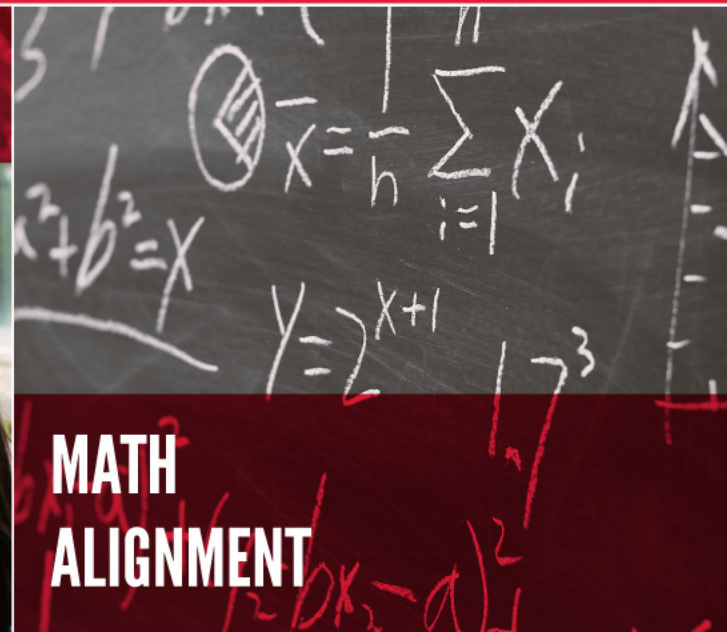


**COREQUISITE
REMEDiation**



**STRUCTURED
SCHEDULES**

TECHNOLOGY



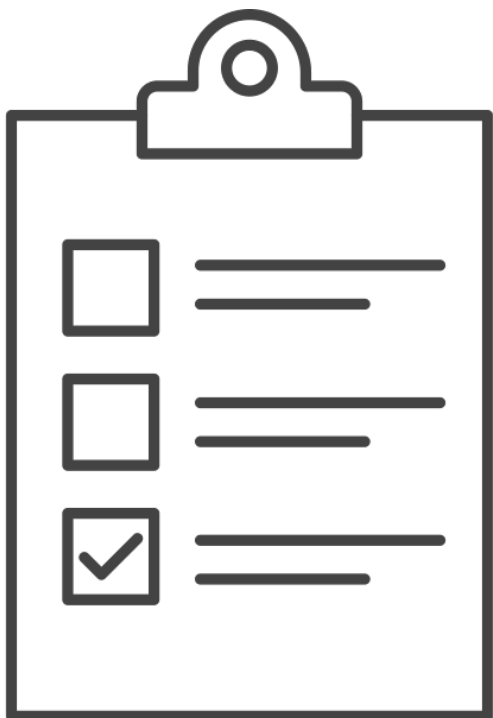
**MATH
ALIGNMENT**



**PROACTIVE ADVISING
AND INFORMED CHOICE**



**META-MAJORS AND
DEGREE MAPS**



1

MATH PATHWAYS COMPLETED

2

DEGREE MAPS IN PLACE OF ARTICULATION AGREEMENTS

3

PREDICTIVE ANALYTICS TECHNOLOGY PUT INTO PLACE

4

PROACTIVE ADVISING PRACTICES UTILIZED

5

INFORMED CHOICE INTERVENTIONS OFFERED

6

COREQUISITE MODELS DELIVERED

7

TRANSFER PORTAL IN PROCESS

METRICS TO SUCCESS

