


AGENDA ITEM IV-A


Demographic Characteristics and Trends in Texas and Higher Education



Texas Higher Education
Coordinating Board
Austin, Texas
January 24, 2019

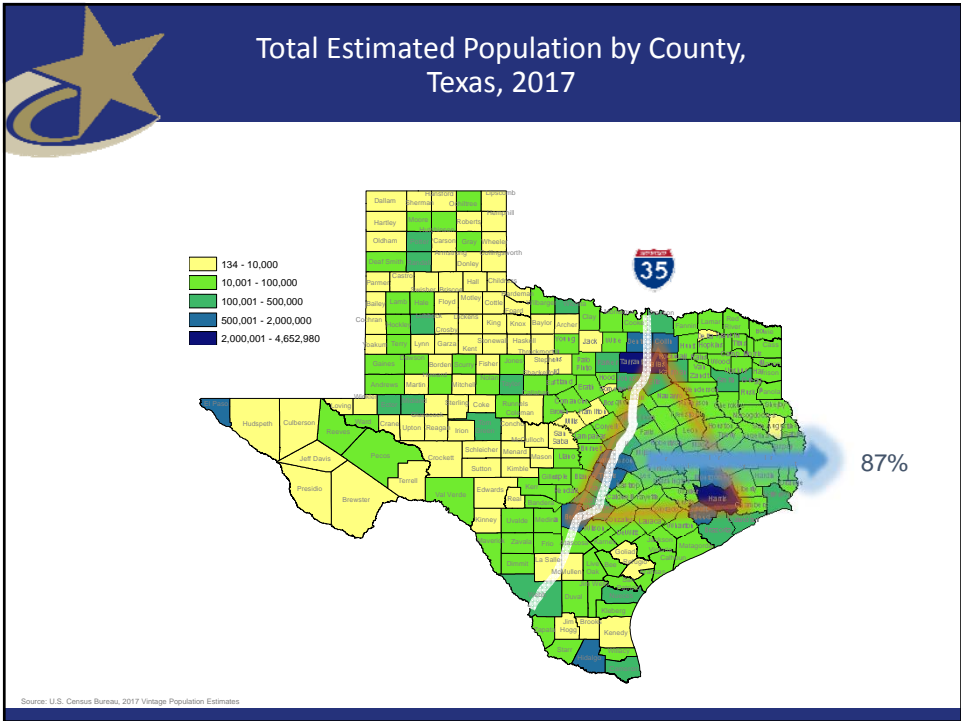
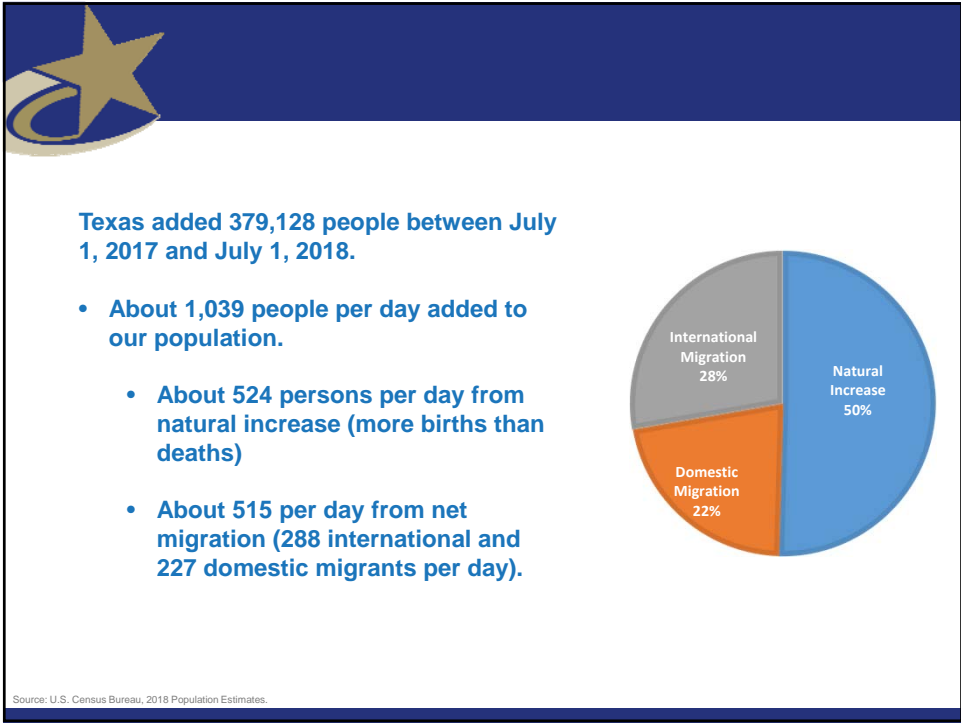


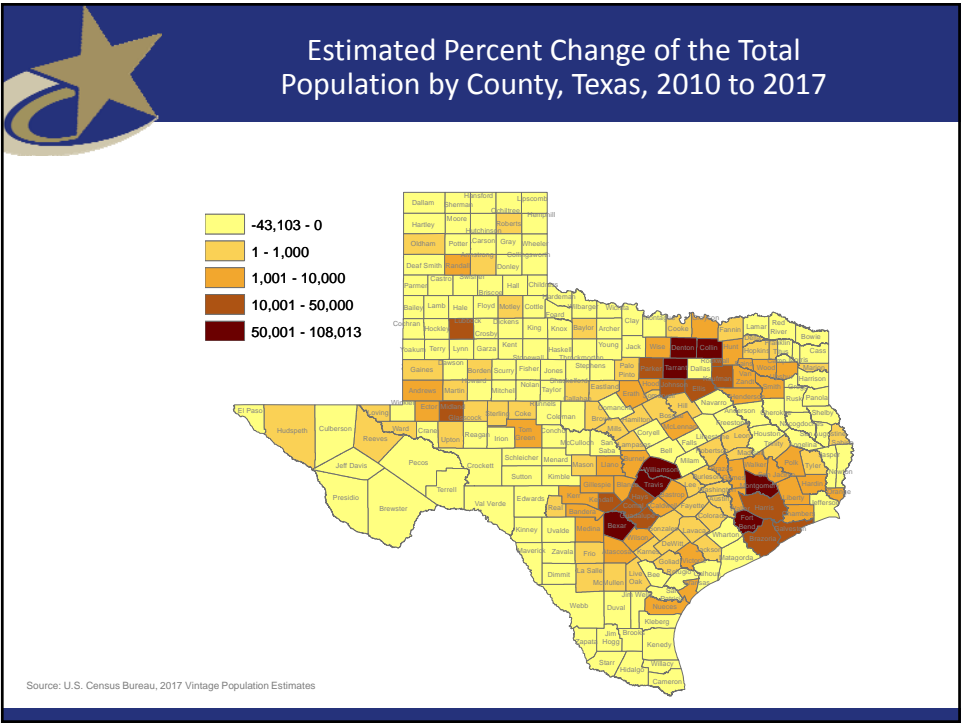
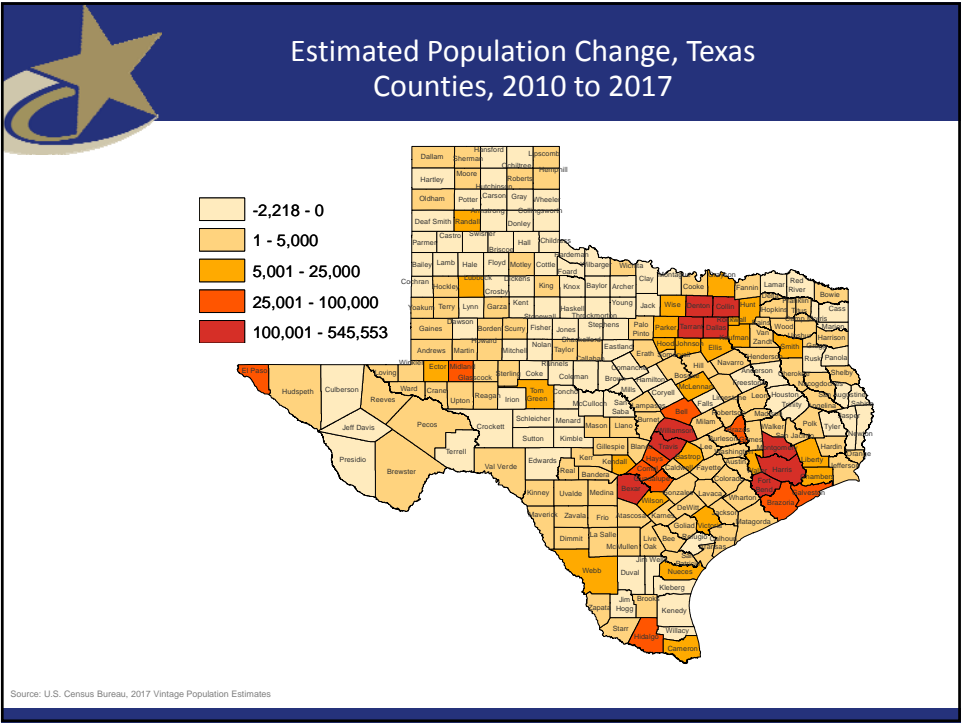
TEXAS
DEMOGRAPHIC CENTER

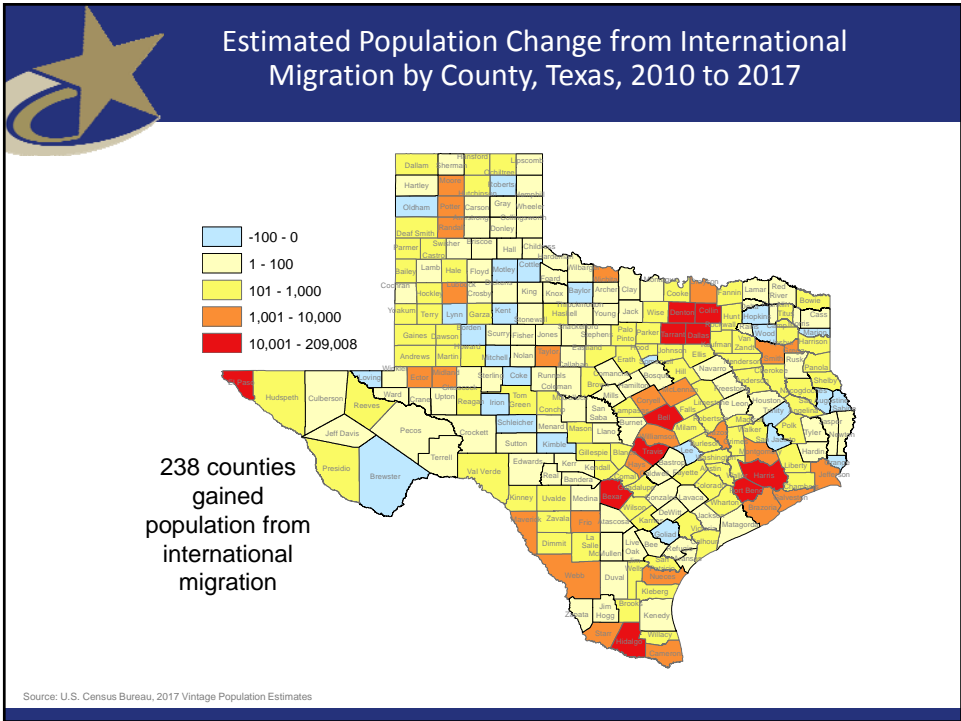
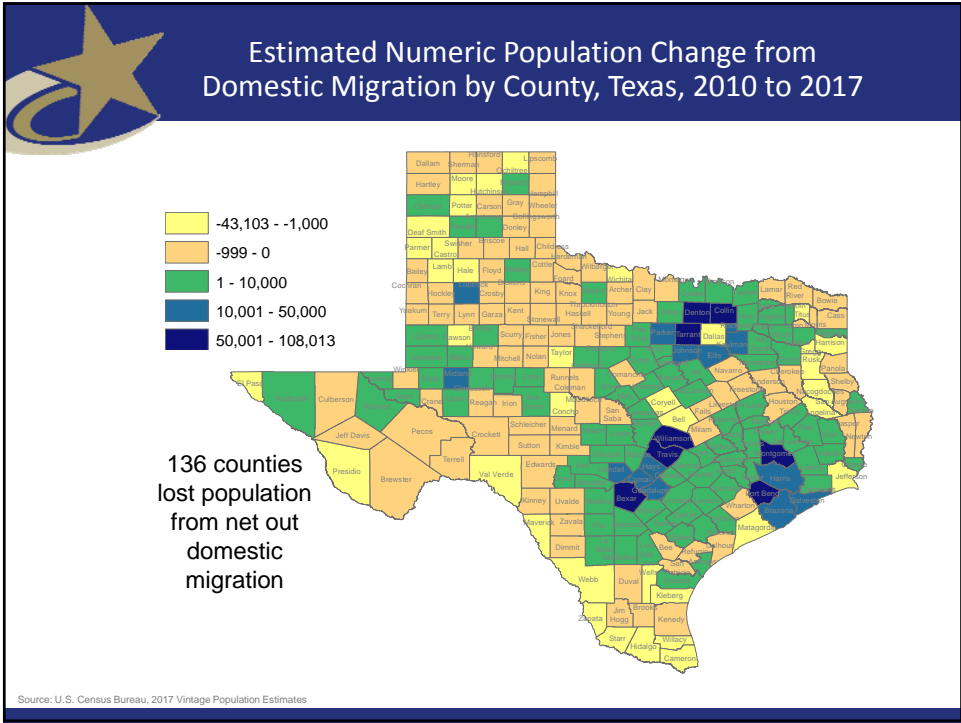
 @TexasDemography

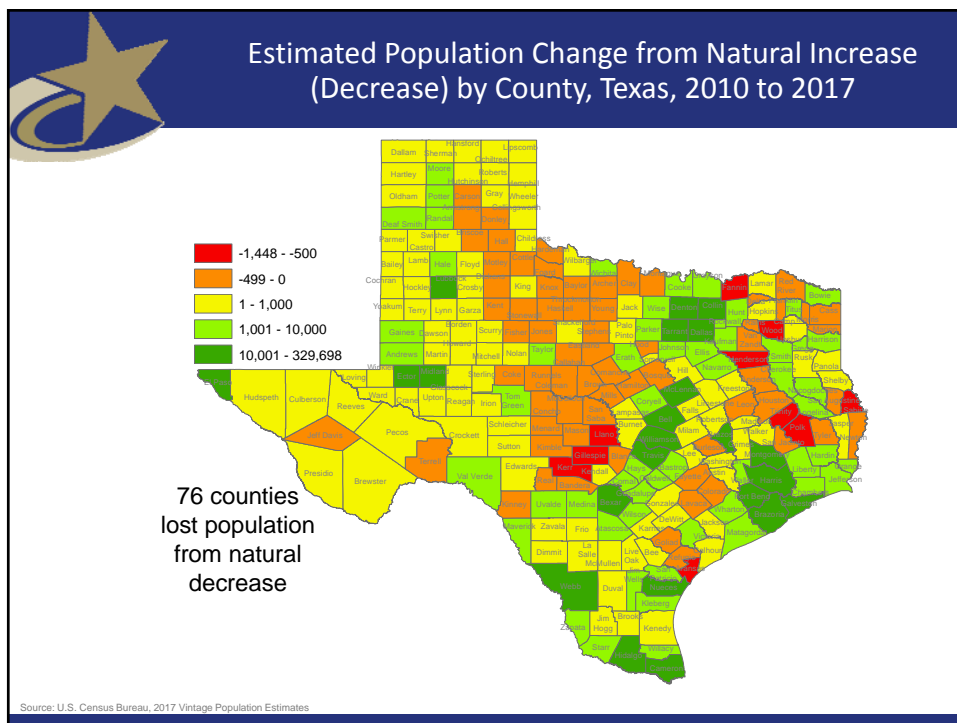
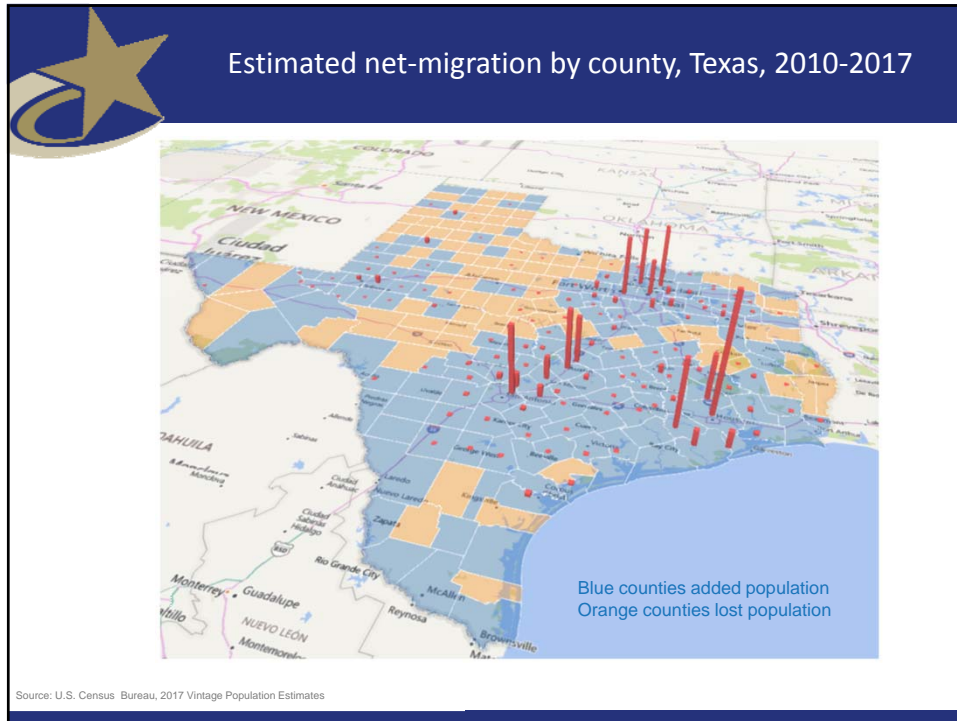
Growing States, 2010-2018							
Rank	State	2010	2017	2018	Numeric growth 2017 2018	Percent Growth 2017 2018	Percent Growth 2010 2018
1	Texas	25,146,114	28,322,717	28,701,845	379,128	1.3%	14.1%
2	Florida	18,804,580	20,976,812	21,299,325	322,513	1.5%	13.3%
3	California	37,254,523	39,399,349	39,557,045	157,696	0.4%	6.2%
4	Arizona	6,392,288	7,048,876	7,171,646	122,770	1.7%	12.2%
5	North Carolina	9,535,736	10,270,800	10,383,620	112,820	1.1%	8.9%

Source: U.S. Census Bureau. 2000 and 2010 Census Count, 2018 Population Estimates.









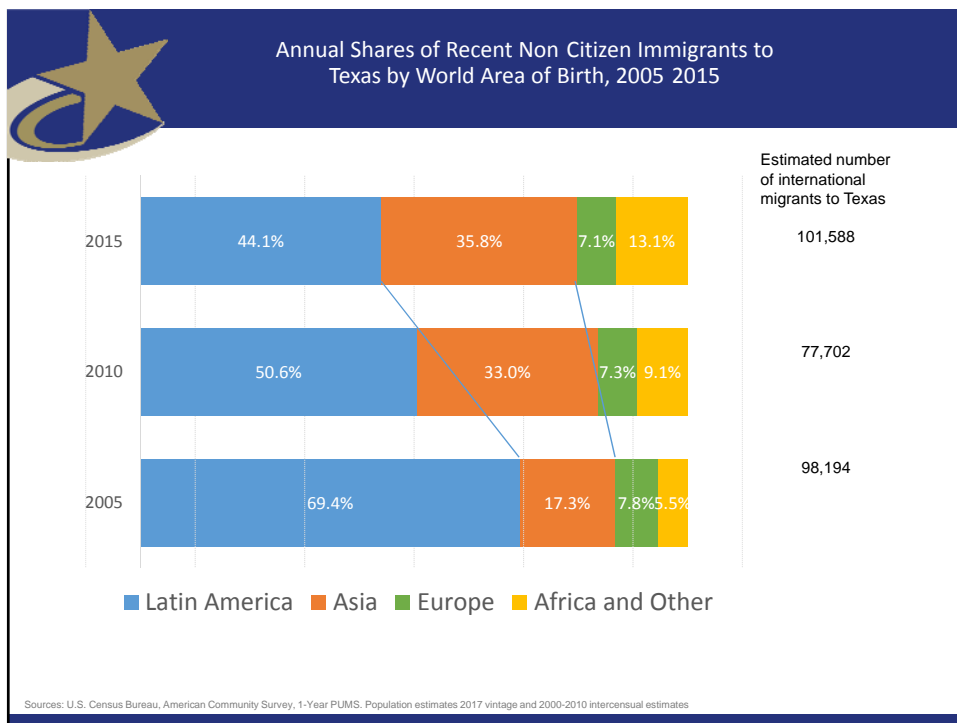
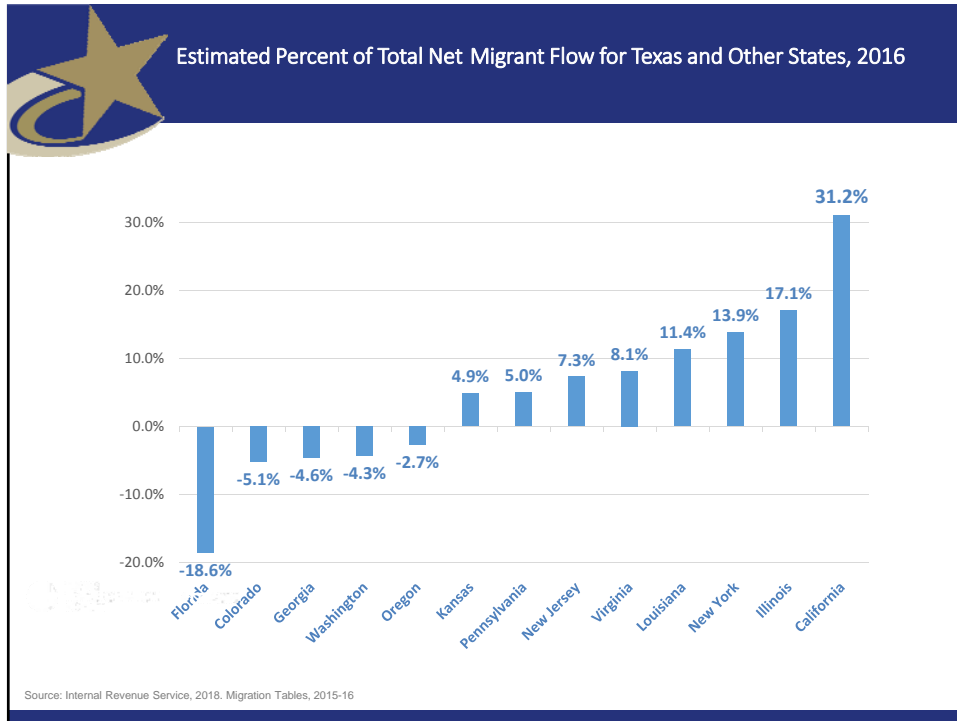



AGENDA ITEM IV-A

 Top Counties for Numeric Growth in Texas, 2016-2017					
County	U.S. Rank Population Change	Population Change	Percent of Change from Natural Increase	Percent Change from Domestic Migration	Percent Change from International Migration
Harris*	4	35,939	128.8%	-126.0%	97.2%
Tarrant	5	32,729	47.9%	29.0%	23.1%
Bexar	7	30,831	47.8%	33.4%	18.8%
Dallas	8	30,686	78.0%	-25.5%	47.6%
Denton	9	27,911	23.3%	67.0%	9.7%
Collin	10	27,150	24.4%	56.5%	19.0%
Fort Bend	14	22,870	29.4%	48.1%	22.6%
Travis	15	22,116	47.9%	22.1%	30.0%
Williamson	19	19,776	20.1%	73.5%	6.3%
Montgomery	28	16,412	22.7%	68.5%	8.8%
Hidalgo*	49	10,474	105.9%	-34.5%	28.5%
* Hidalgo and Harris Counties had negative net migration (Harris 10,322 and Hidalgo 621). Source: U.S. Census Bureau, 2017 Vintage Population Estimates					

 Top Counties for Percent Growth* in Texas, 2016-2017				
County	U.S. Rank	2015-2016 Percent Population Change	Percent Change from Domestic Migration	Percent Change from International Migration
Comal	2	5.1%	90.7%	1.9%
Hays	4	5.0%	81.6%	2.8%
Kendall	5	4.9%	96.3%	3.3%
Kaufman	11	4.1%	83.0%	2.2%
Rains	13	4.0%	103.1%	2.9%
Williamson	16	3.7%	73.5%	6.3%
Rockwall	22	3.6%	81.8%	2.4%
Parker	26	3.6%	89.7%	1.3%
Denton	32	3.5%	67.0%	9.7%
Guadalupe	36	3.3%	81.4%	2.7%
Ellis	44	3.1%	78.2%	3.0%
Llano	45	3.1%	119.8%	0.5%
Fort Bend	48	3.1%	48.1%	22.6%
*Among Counties with 10,000 or more population in 2017 Source: U.S. Census Bureau, 2017 Vintage Population Estimates				

AGENDA ITEM IV-A





The 15 Most Populous Cities, July 1, 2017

Rank	City	State	2017 total Population
1	New York	New York	8,622,698
2	Los Angeles	California	3,999,759
3	Chicago	Illinois	2,716,450
→ 4	Houston	Texas	2,312,717
5	Phoenix	Arizona	1,626,078
6	Philadelphia	Pennsylvania	1,580,863
→ 7	San Antonio	Texas	1,511,946
8	San Diego	California	1,419,516
→ 9	Dallas	Texas	1,341,075
10	San Jose	California	1,035,317
→ 11	Austin	Texas	950,715
12	Jacksonville	Florida	892,062
13	San Francisco	California	884,363
14	Columbus	Ohio	879,170
→ 15	Fort Worth	Texas	874,168

Five of the 15 most populated cities

Source: U.S. Census Bureau, 2017 Vintage Population Estimates

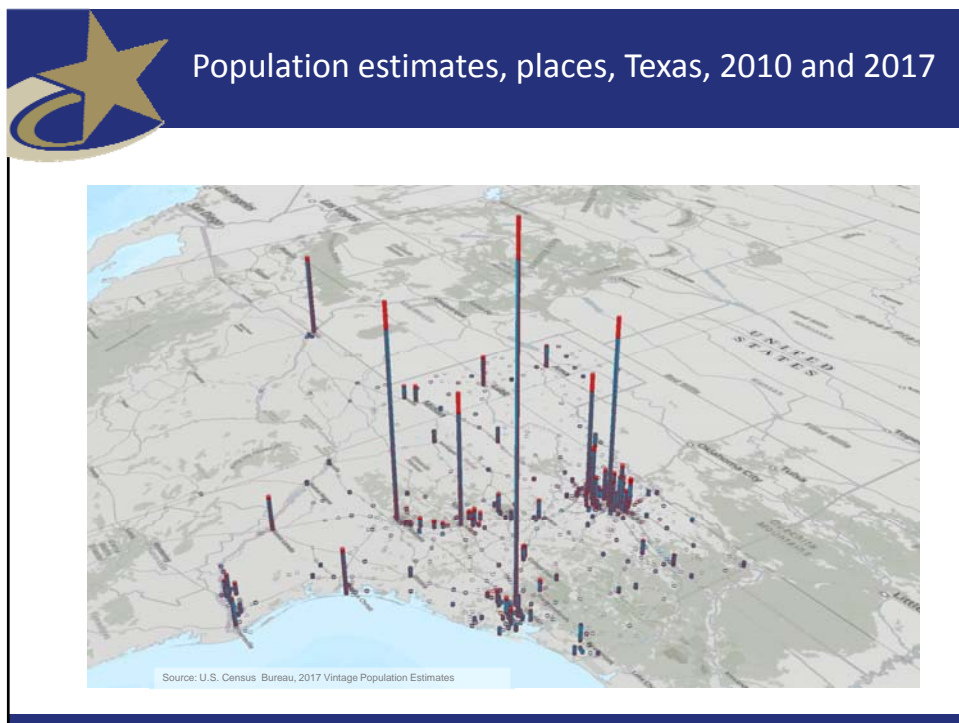
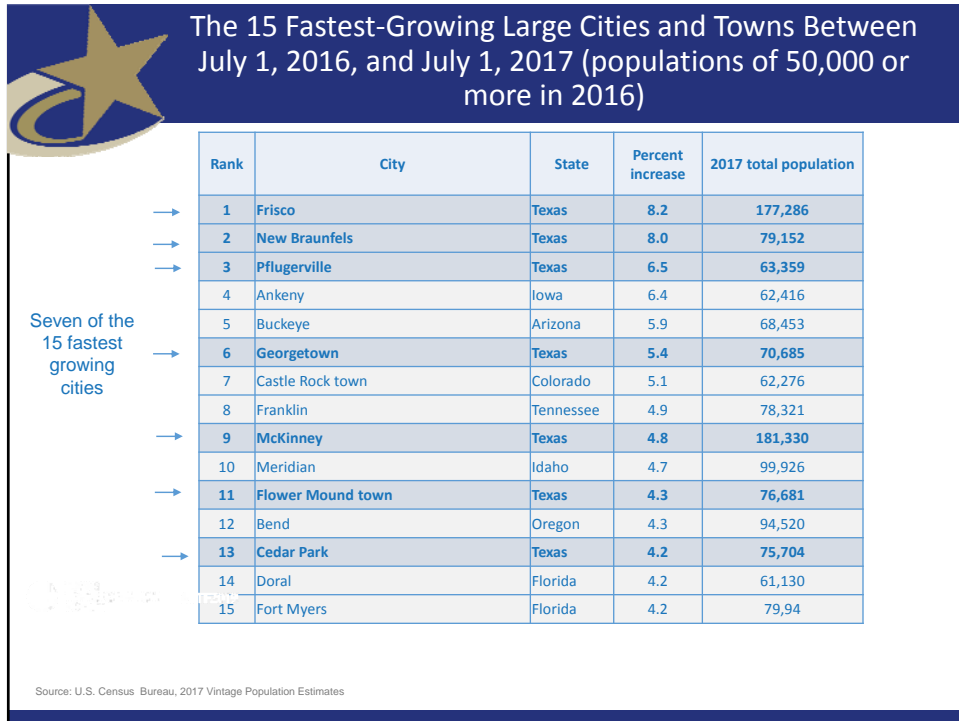


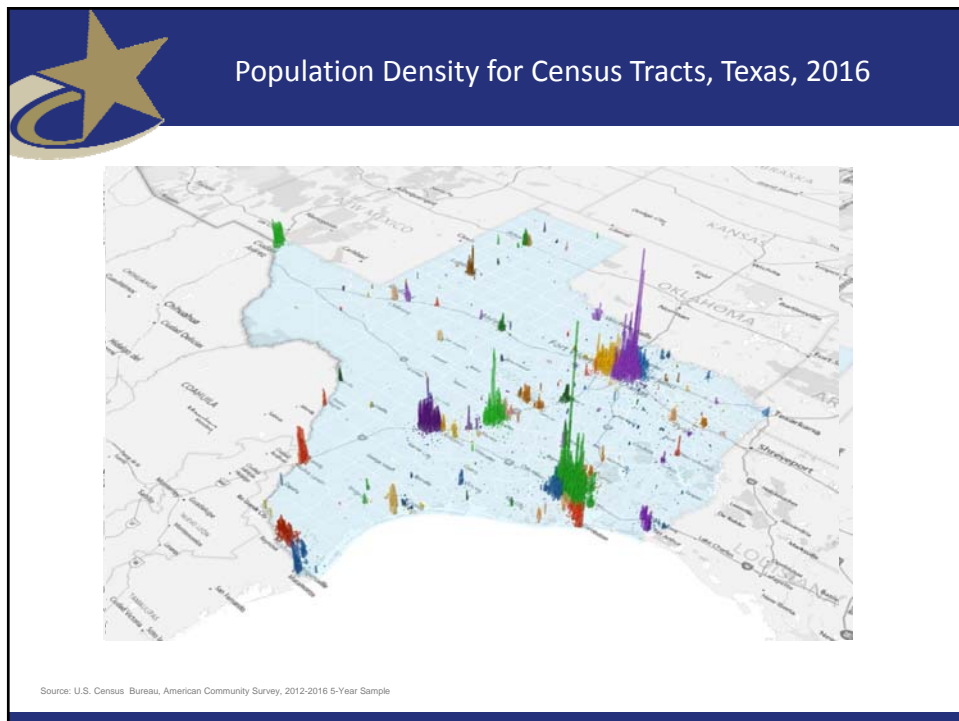
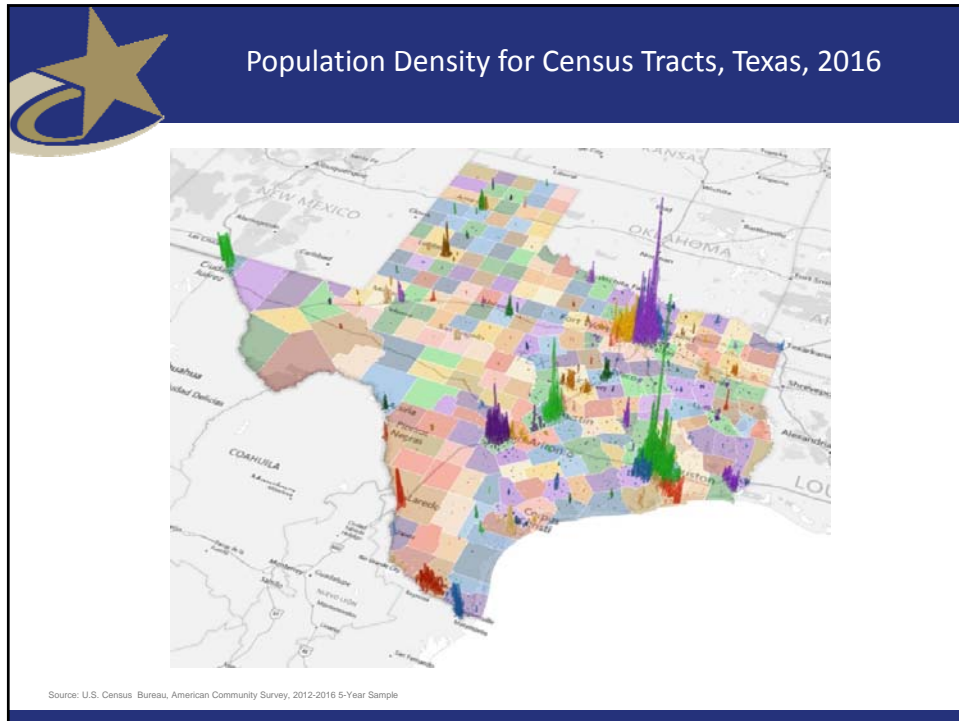
The 15 Cities With the Largest Numeric Increase Between July 1, 2016, and July 1, 2017 (Populations of 50,000 or more in 2016)

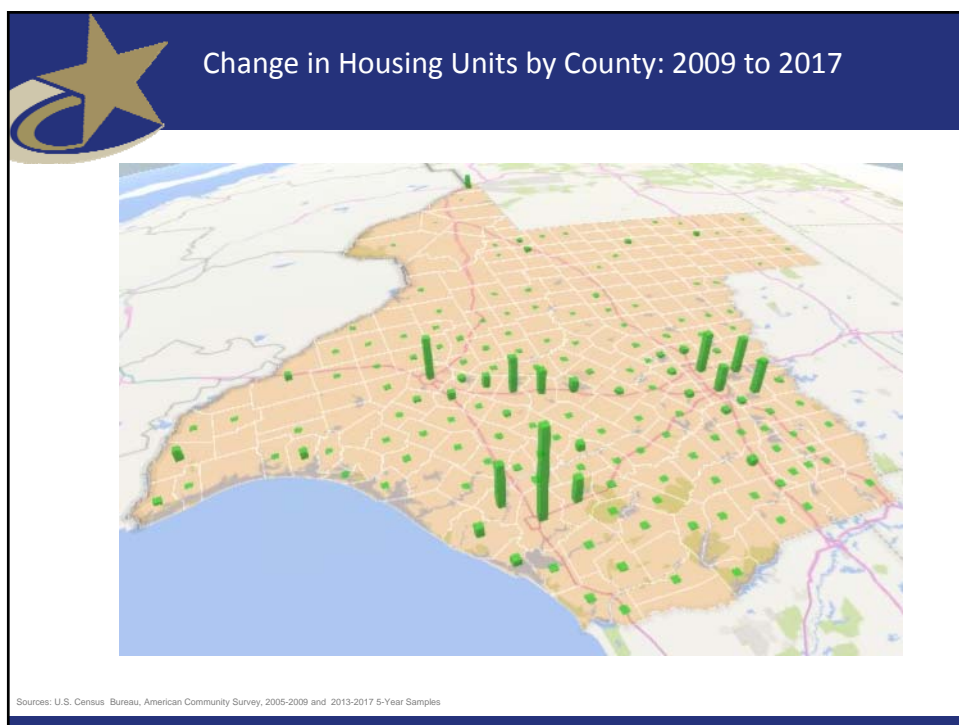
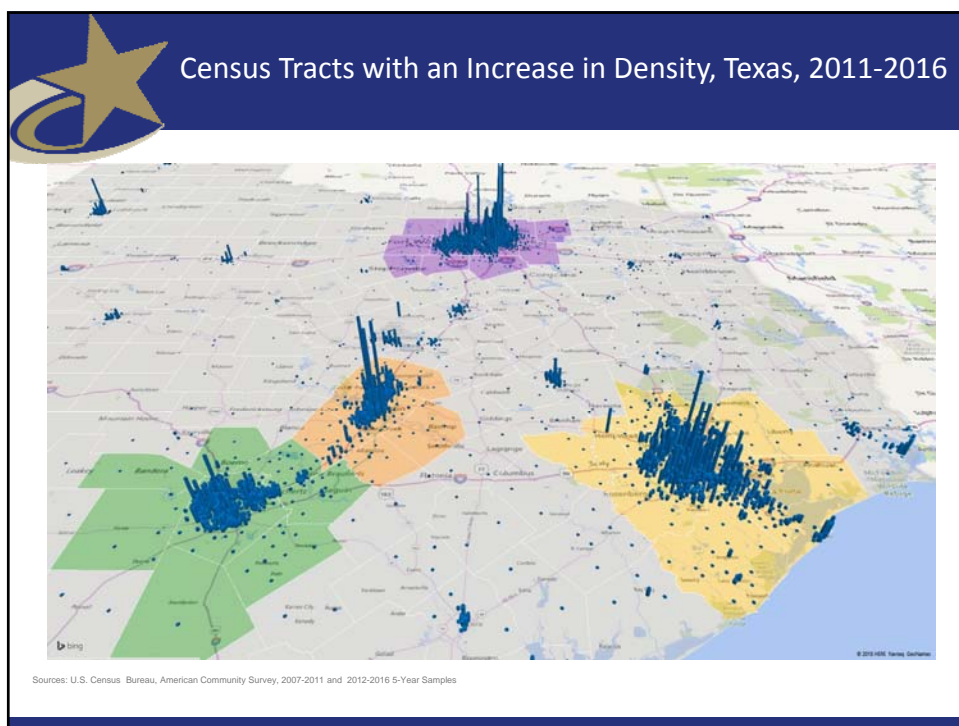
Rank	City	State	Numeric increase	2017 total population
→ 1	San Antonio	Texas	24,208	1,511,946
2	Phoenix	Arizona	24,036	1,626,078
→ 3	Dallas	Texas	18,935	1,341,075
→ 4	Fort Worth	Texas	18,664	874,168
5	Los Angeles	California	18,643	3,999,759
6	Seattle	Washington	17,490	724,745
7	Charlotte	North Carolina	15,551	859,035
8	Columbus	Ohio	15,429	879,170
→ 9	Frisco	Texas	13,470	177,286
10	Atlanta	Georgia	13,323	486,290
11	San Diego	California	12,834	1,419,516
→ 12	Austin	Texas	12,515	950,715

Five of the 15 cities with the most growth

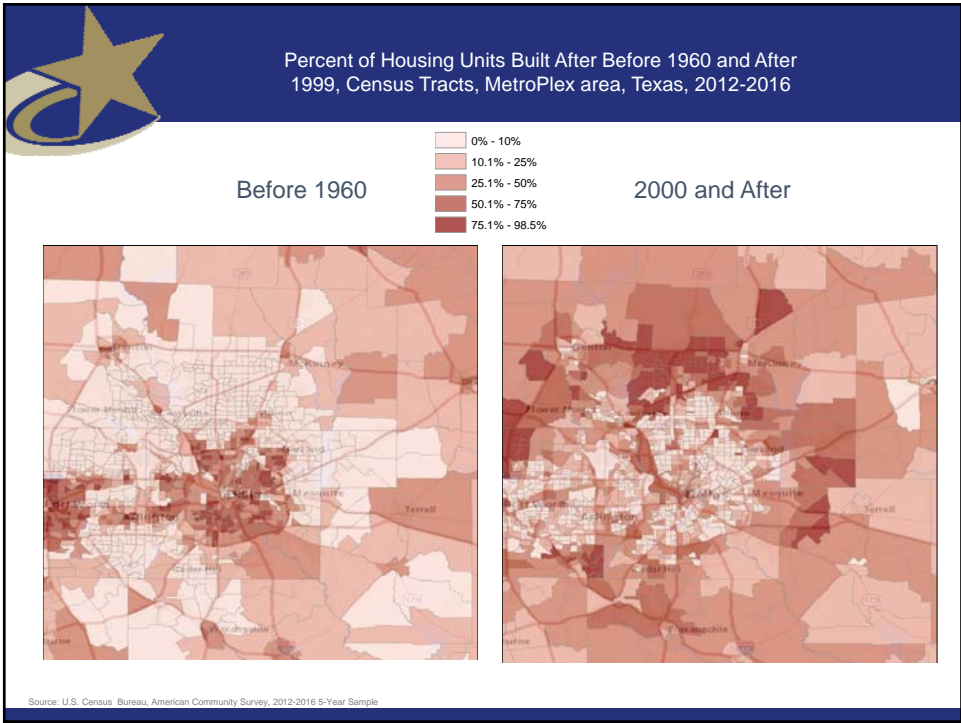
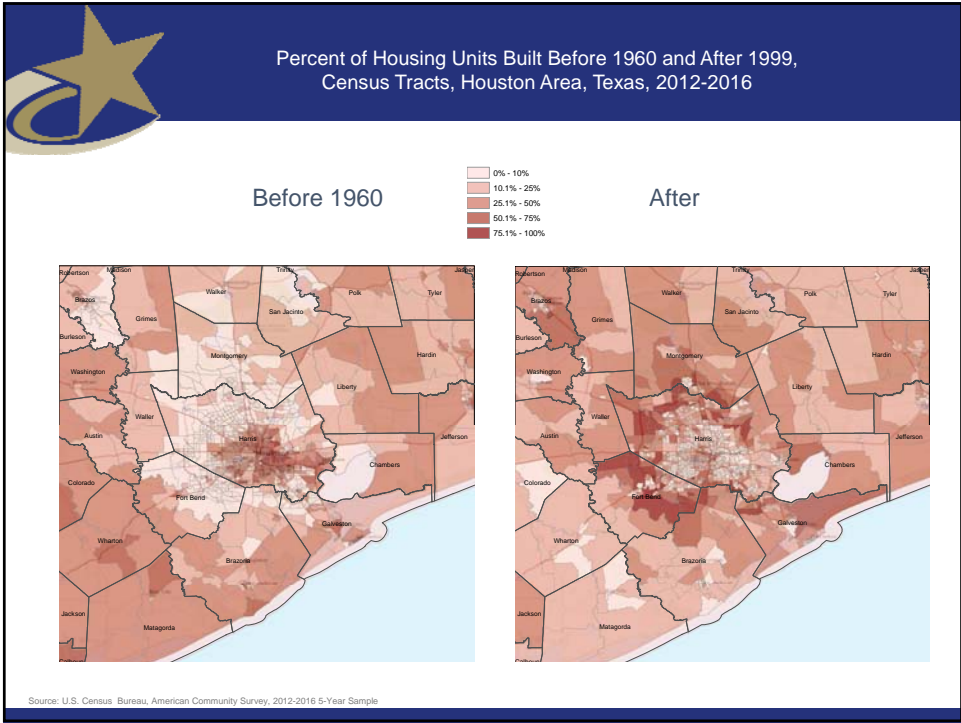
Source: U.S. Census Bureau, 2017 Vintage Population Estimates

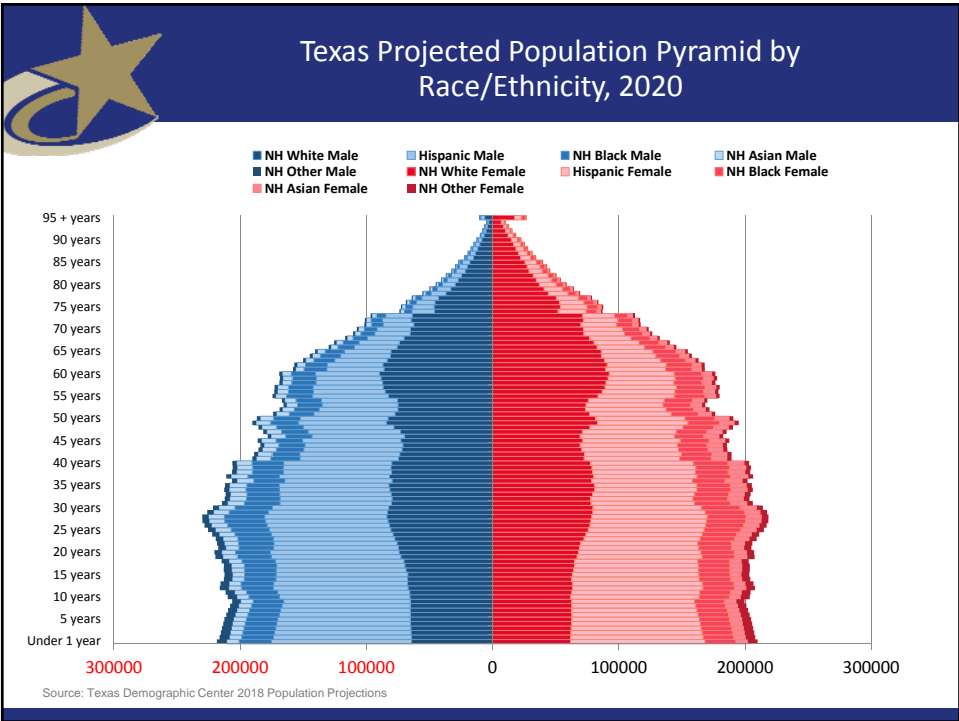
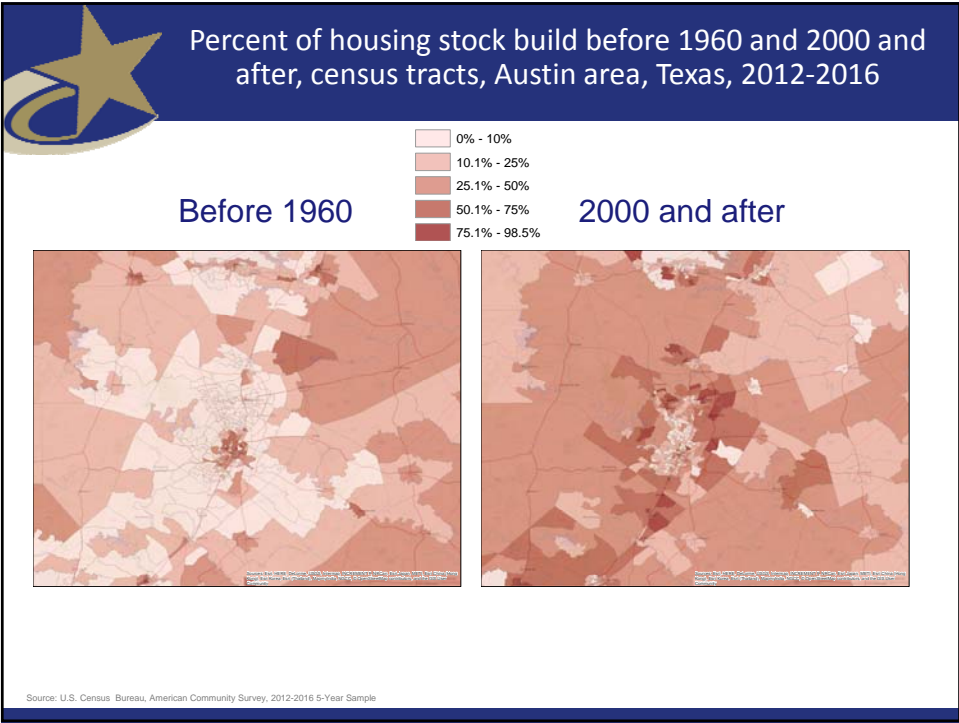


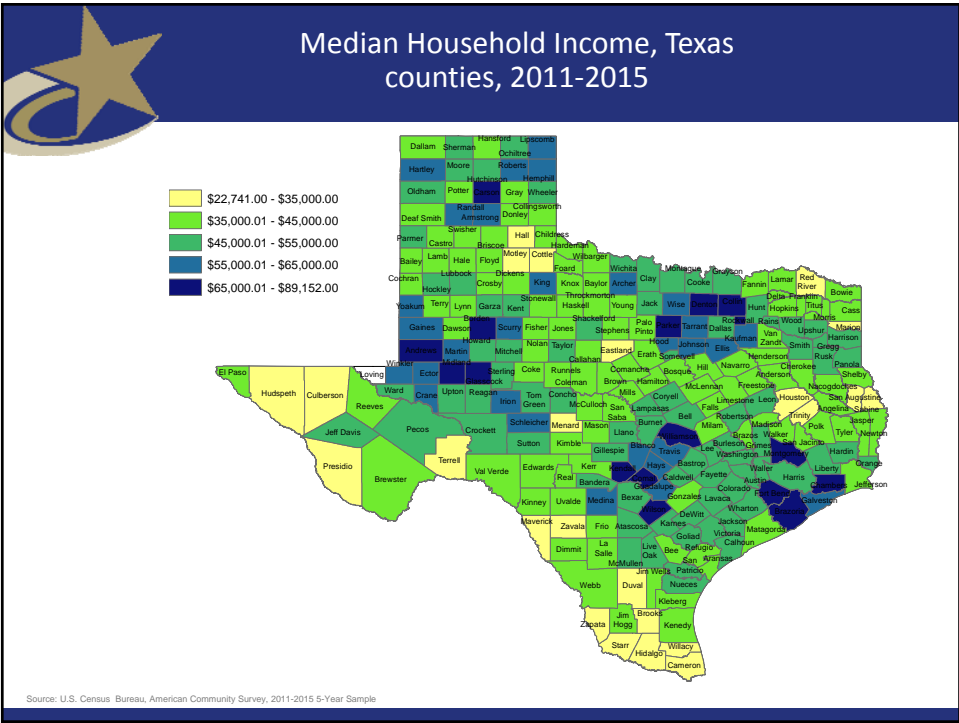
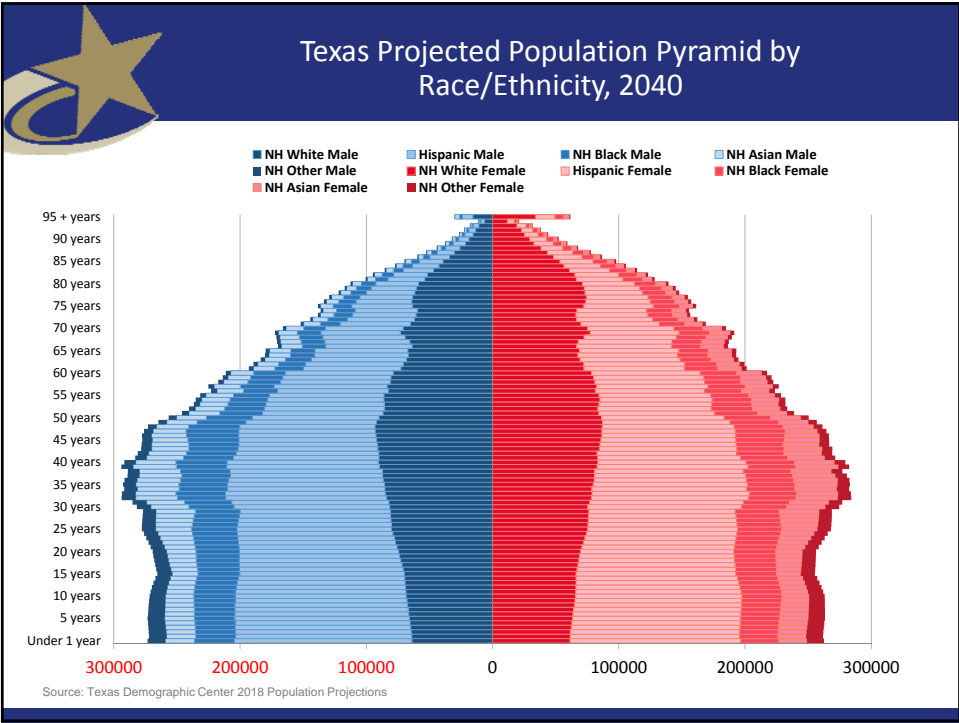


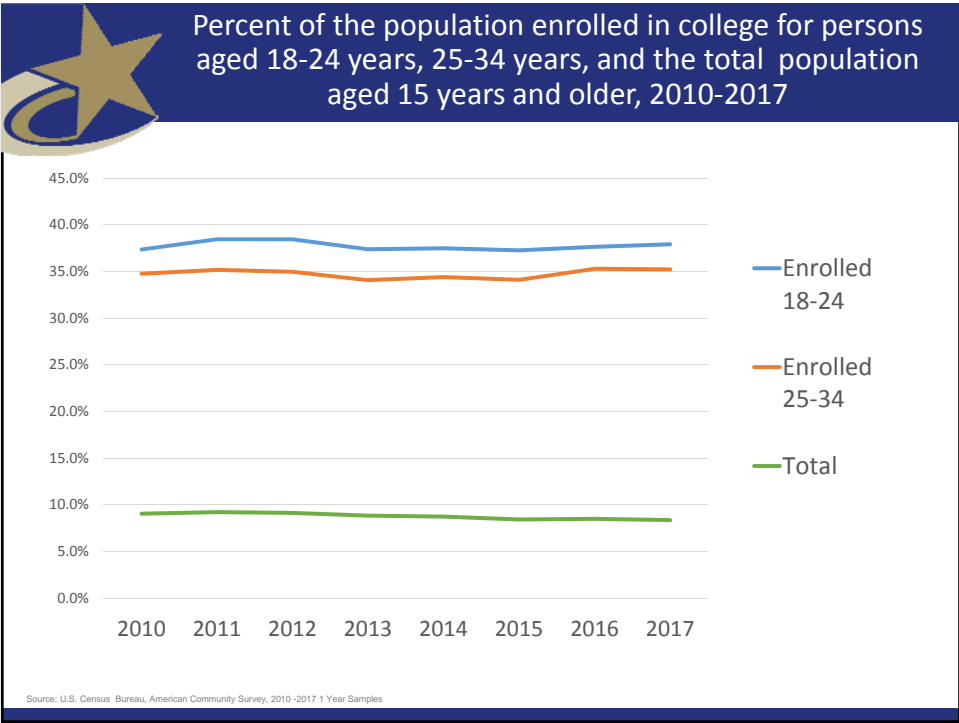
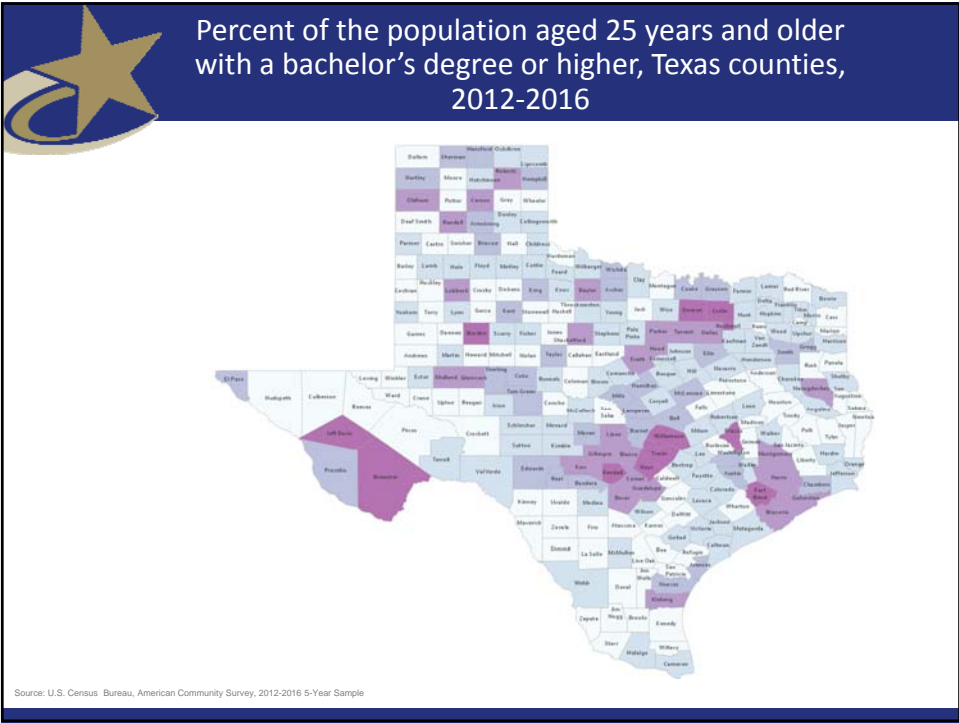


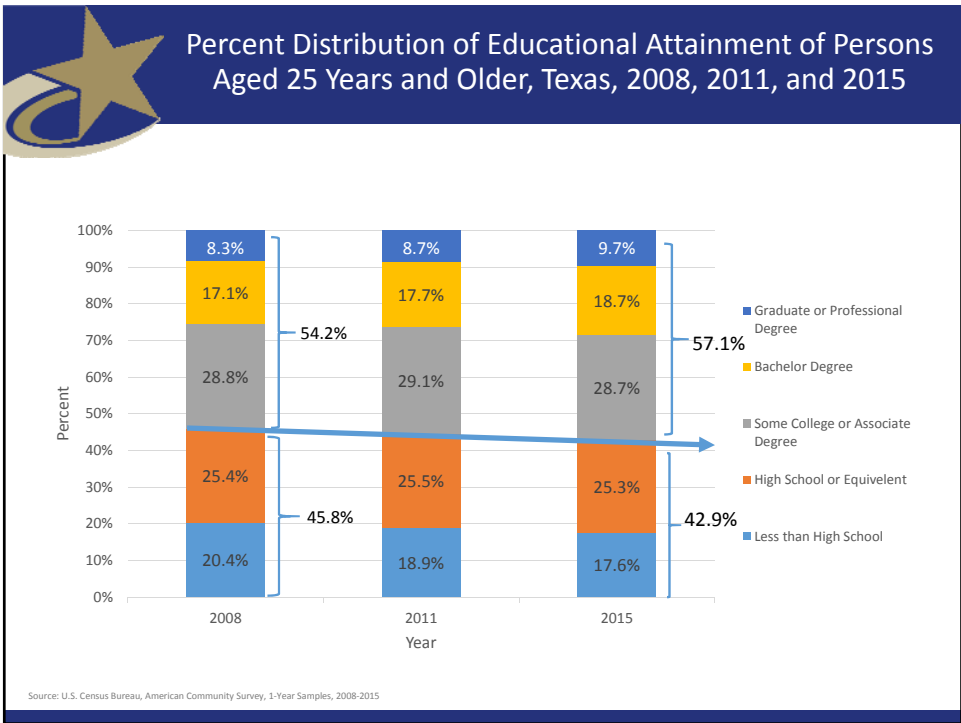
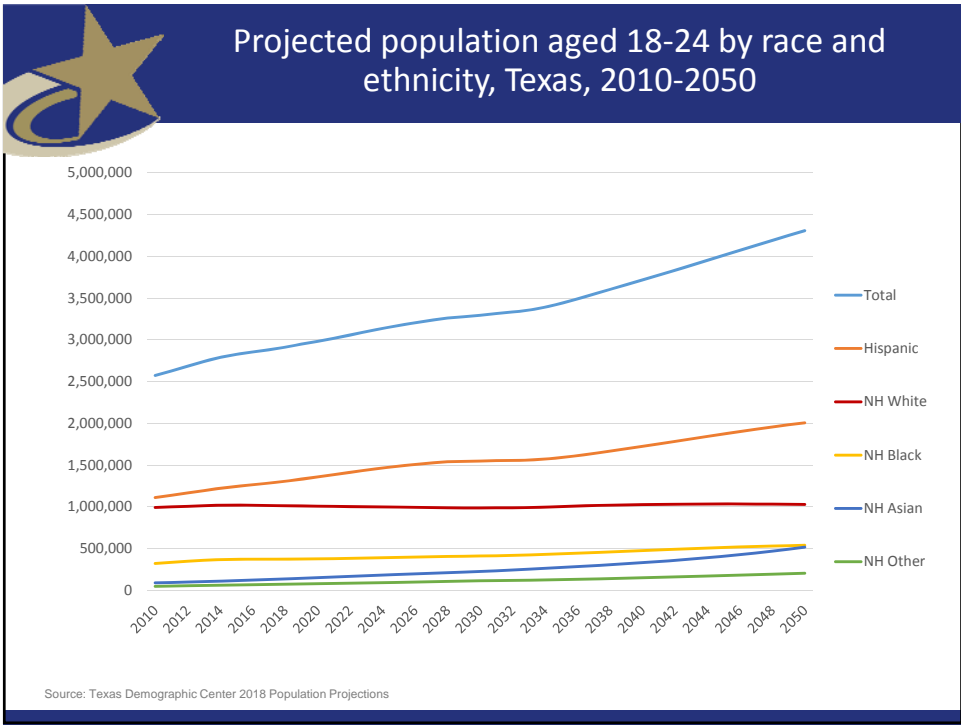
AGENDA ITEM IV-A

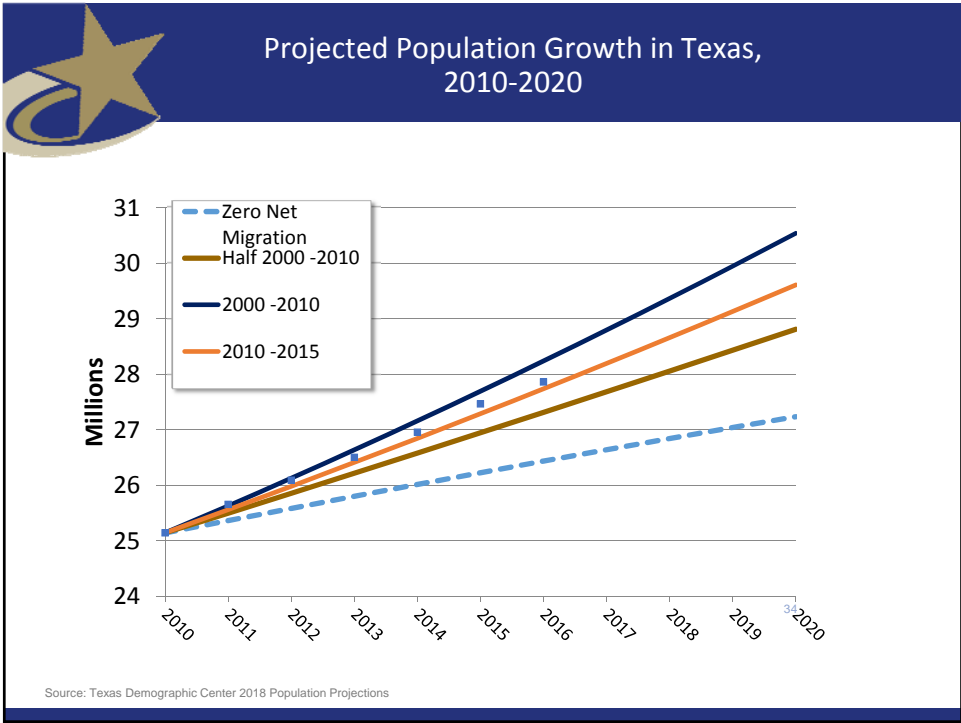
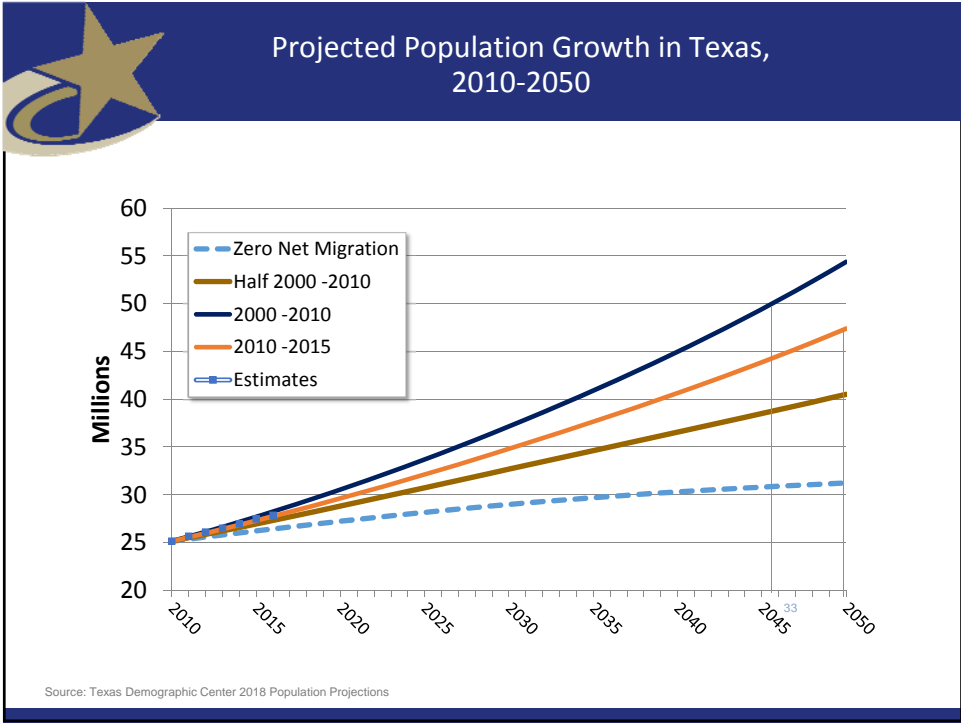


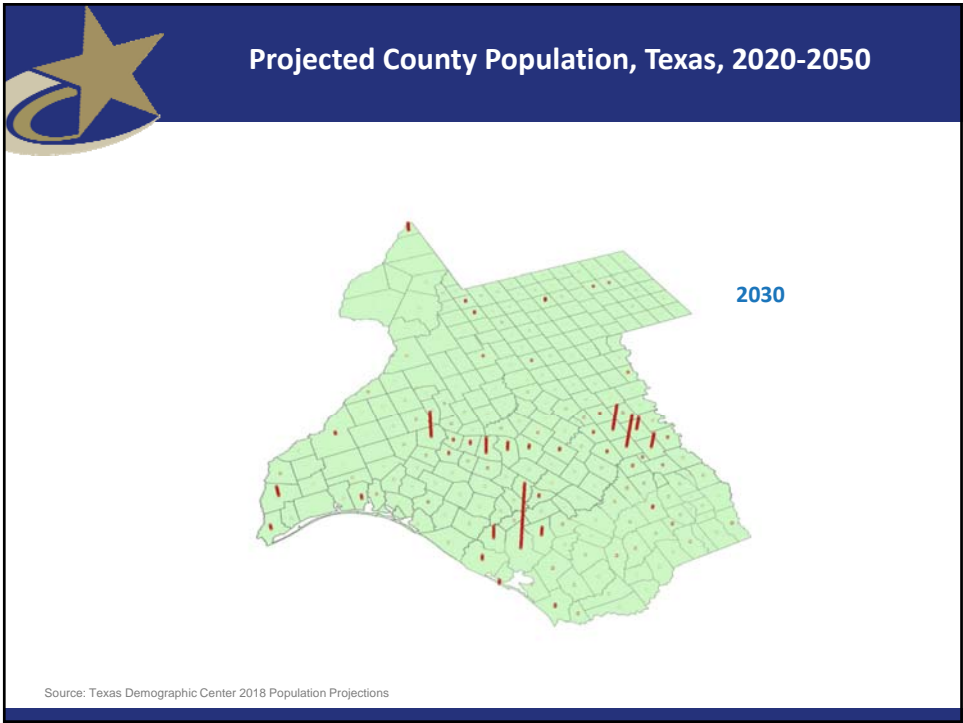
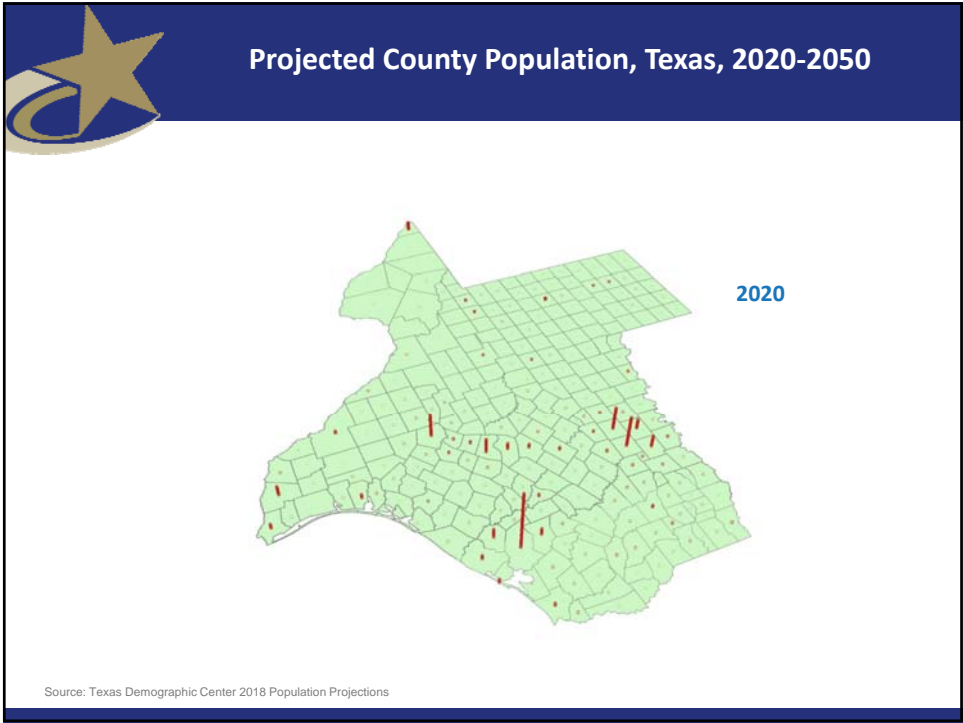


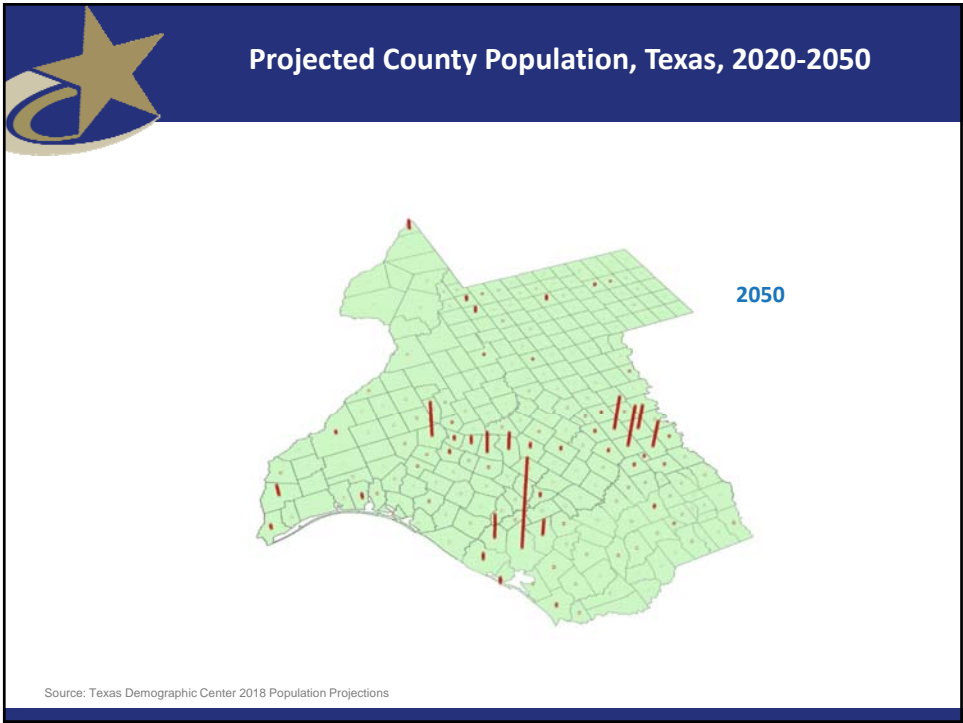
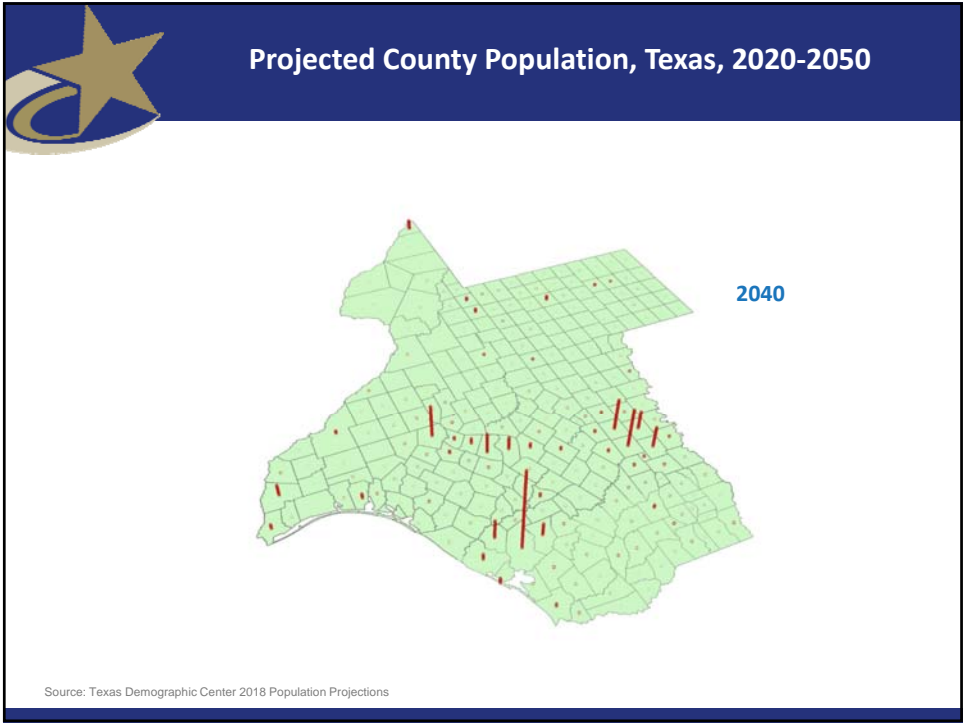














Contact

Lloyd Potter, Ph.D.

State Demographer
Texas Demographic Center
Office: (210) 458-6530
Email: Lloyd.Potter@UTSA.edu
Internet: Demographics.Texas.gov
 [@TexasDemography](https://twitter.com/TexasDemography)