

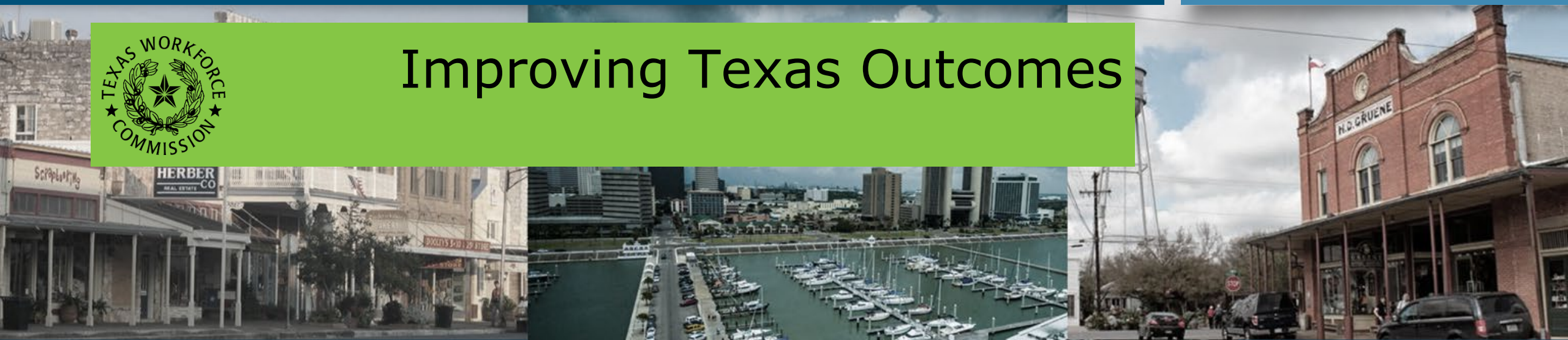


Decision Tree for Determining Evidence Tiers

Texas Workforce Commission (TWC), Texas Workforce Investment Council (TWIC), Results for America, Rural Capital Area Workforce Development Board, & Third Sector Capital Partners



Improving Texas Outcomes





Using the Decision Tree

Thinking about Maggie's current program...

1. Is the program developed internally, or is it based on the program design of another program or organization?

Yes, it is developed internally. Go to Question 2.

No, it is based on the program design of another program. Go to Question 5.

2. Is the program new or has it been offered in an essentially consistent and comparable way in past years?

Yes, the program is new.

➤ Because the program is new and developed internally, select the New Program Tier.

No, the program has been offered in past years. Go to Question 3.



Decision Tree – Question #3

3. In prior years, has data been collected on the outputs and outcomes of the program?
Please refer to the Performance Chart for the relevant data sets.

Yes, data has been collected on the performance metrics. Go to Question 4.

No, data has not been collected on the performance metrics.

- Because the program has been delivered previously but data was not collected on the performance metrics, select the Experience Program Tier.



Decision Tree – Question #4

4. Has an evaluation of your program been reviewed by [DOL's Clearinghouse for Labor Evaluation and Research \(CLEAR\)](#)/Other Entity?

Yes, a program evaluation has been submitted to CLEAR/Other Entity.

- If the program evaluation received a “high” rating and demonstrated both a positive and meaningful outcome and there is another review from CLEAR or Other Entity that supports the same, select the High Evidence Program Tier, and complete the Documentation of Evidence Chart for the High or Moderate Evidence Program Tier to reference the CLEAR/Other Entity Review Study.
- If the program evaluation received a “moderate” rating and demonstrated both a positive and meaningful outcome, select the Moderate Evidence Program Tier and complete the Documentation of Evidence Chart for the High or Moderate Evidence Program Tier to reference the CLEAR/Other Entity Review Study.
- If the program evaluation has not yet been reviewed, or received the “low” rating, select the Performance Program Tier, submit performance metrics, and complete the Performance Chart.

No, a program evaluation has not been reviewed by CLEAR/Other Entity.

- Select the Performance Program Tier and submit performance metrics and requirements in the Performance Chart.



Performance Chart

History		Training Data			Employment Data					Wage Data	
History of Initiative (Grants, Program, Service)	Year	Number of Participants	Number of Completers	% Completion	Number of Industry Based Certifications	Number Employed at 6 months	% Employed at 6 months	Number employed at 12 months (Q3+Q4)	% Employed at 12 months	Average Wage increase (Q2, Q3, Q4)	Average Wage increase %
Expansion Grant	2018	100	90	90%	90	89	99%	87	97%	\$5.00/hr	20%
Pilot Grant	2017	105	76	72%	76	60	83%	65	85%	\$3.50/hr	15%



Evaluation Table

Evaluation Source (from list below)	Please list name of entity
Study #1 name:	Please copy/paste from CLEAR/Other Entity.
Study Full Citation:	Please copy/paste from CLEAR/Other Entity.
Findings:	Please copy/paste from CLEAR/Other Entity.
CLEAR/Other Entity Causal Evidence Rating:	Please copy/paste from CLEAR/Other Entity.
Key elements of the study program that will be implemented:	
Elements of the study program that will be changed or not implemented, and why these changes do not affect the validity of the comparison:	
Data to be collected to compare outcomes between the study and proposed programs:	
Appropriateness of proposed geography and population to be served:	



Decision Tree - Question #5

FOR PROGRAMS THAT ARE IMPLEMENTING THE PROGRAM DESIGN OF ANOTHER PROGRAM AND EXPECT SIMILAR PERFORMANCE OUTPUTS AND OUTCOMES ONLY:

5. Is the design of your program essentially similar to the program design and theory of change of the original program that this application proposes to implement?

Yes, our program will be essentially similar and have high fidelity to the original. Go to Question 6.

No, our program will incorporate significant changes from the model program.

- Because your program is not a high-fidelity implementation of an existing program, select the New Program Tier.



Decision Tree - Question #6

6. Was an evaluation of the original program reviewed by CLEAR/Other Entity and there is another study from CLEAR or Other Entity that supports the same, and demonstrated both a positive and meaningful outcome?

Yes, an evaluation was reviewed by CLEAR/Other Entity and there is a second study that supports the same.

- If the program evaluation received a “high” rating, select the High Evidence Program Tier, and complete the Documentation of Evidence Chart for the High Evidence Program Tier to reference the CLEAR/ Other Entity Review Study.
- If the program evaluation received a “moderate” rating, select the Moderate Evidence Program Tier and complete the Documentation of Evidence Chart for the Moderate Evidence Program Tier to reference the CLEAR/ Other Entity Review Study.
- If the evaluation has not yet been reviewed or received the “low” rating, select the Performance Program Tier and complete the Performance Chart.

No, an evaluation was not submitted. Go to question 7.



Decision Tree - Question #7

7. Do you have performance data or a detailed evaluation from the original program?

Yes, we have performance data from the original program.

- Select the Performance Program Tier and complete the Performance Chart as completely as possible with data from the original program.

No, we do not have performance metrics data from the original program.

- Because your program does not have data from the original program, select the Experience Program Tier.